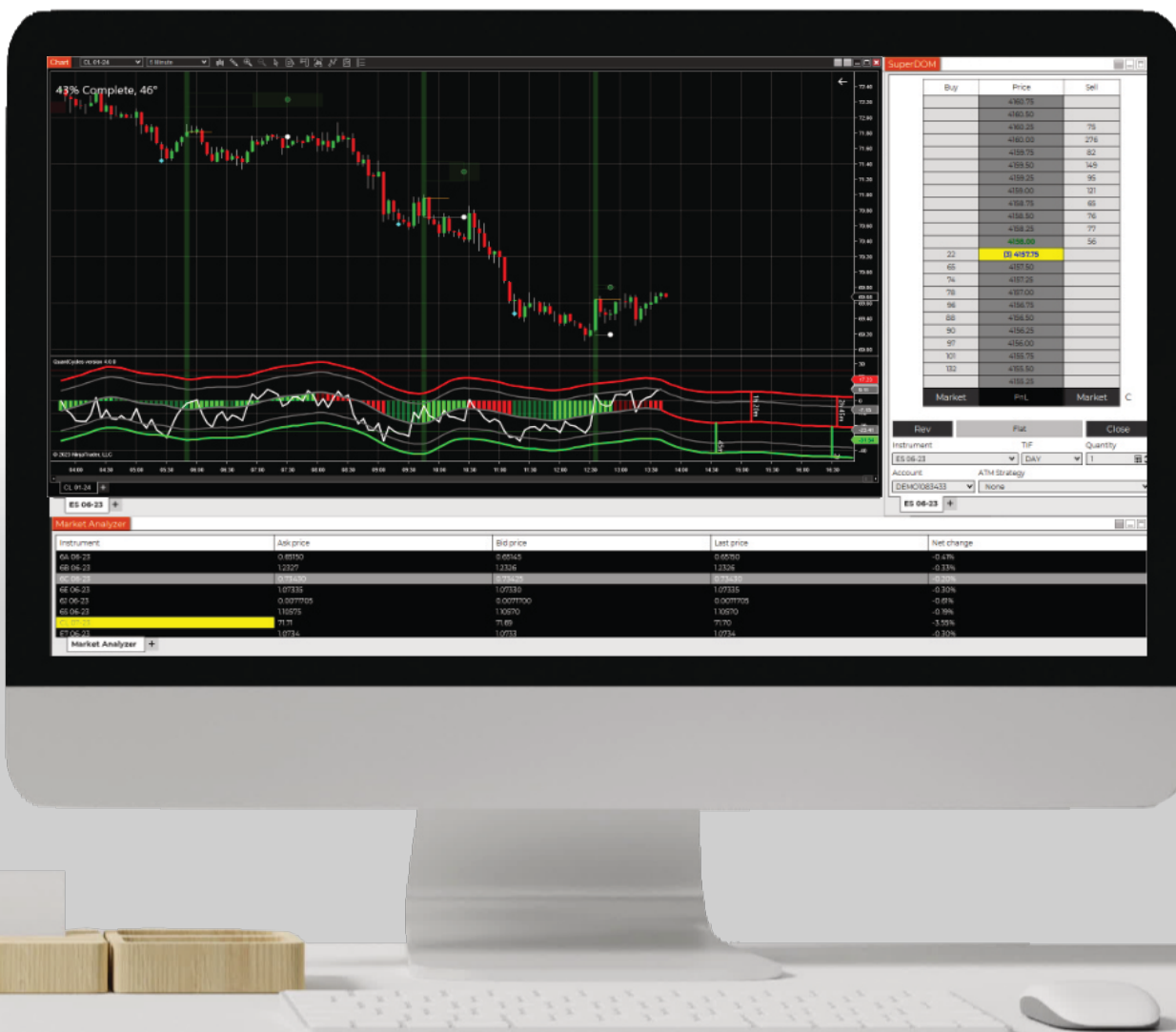




QUANTCYCLES

HOW TO READ THE QUANTCYCLES INDICATOR



OUR INDICATOR:

Clear probable cyclical projection

The QuantCycles indicator gives a **clear & probable cyclical projection** when an extreme is reached. The indicator shows a **green** or **red** vertical bar indicating the probability of a significant turning point, as well as many other data points.

Below we will cover all of these items the QuantCycles indicator generates.



1 43% Complete and 46°

The 43% Complete gives an indication of how much time is left in the cycle.

The 46° is the amplitude of the forecast.



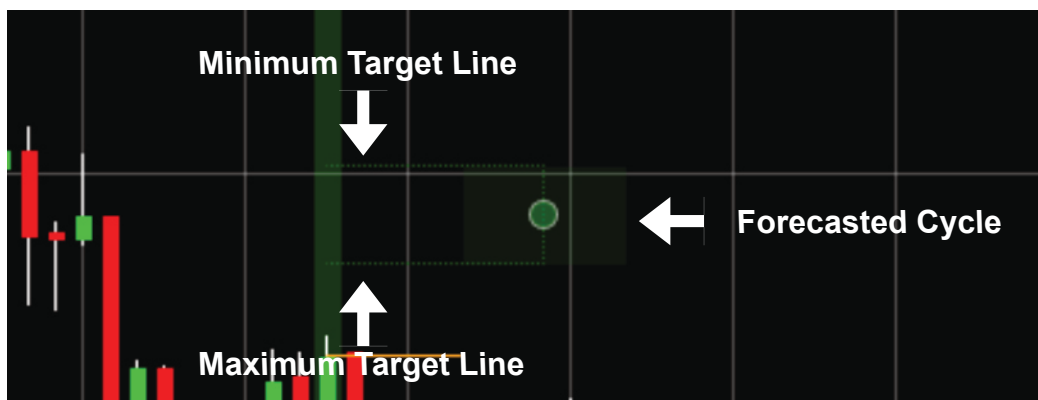
2 The pink (magenta) dot

This indicates the preliminary alert generated by the indicator. This preliminary alert is not always generated, as it is dependent on market conditions.

OUR INDICATOR:



A **red vertical bar** indicates a bearish turning point and a **green vertical bar** indicates a bullish turning point. Our indicator gives you a directional indication of **predicted market behavior**.



5 The light green and light red boxes with the dashed lines

These dashed lines indicate the lower and upper limits, or the anticipated range of movement within the current upward cycle. The solid box is the forecasted cycle duration. The algorithm predicts the cycle's end and price at the midpoint of the box by the red or green dot.

For example: If we consistently predict a market increase for 10 bars, and in the last 5 instances, it actually increased by 8 bars, our accuracy is 80%. To account for this variability, we then widen our prediction range to say it could be anywhere from 8 to 12 bars. Since time influences market movements, we also adjust the target price. In summary, we provide a predicted range for both time and price. Because the algorithm is updating the forecast analysis with each new bar, a range for the cycle duration is given as its expected to change over time.

OUR INDICATOR:



6 The blue diamond

The diamond is where the alert originally triggered (an early alert), but we are waiting for confirmation of the move. This may not always display as it is dependent on market conditions.

7 The white dot and dashed line

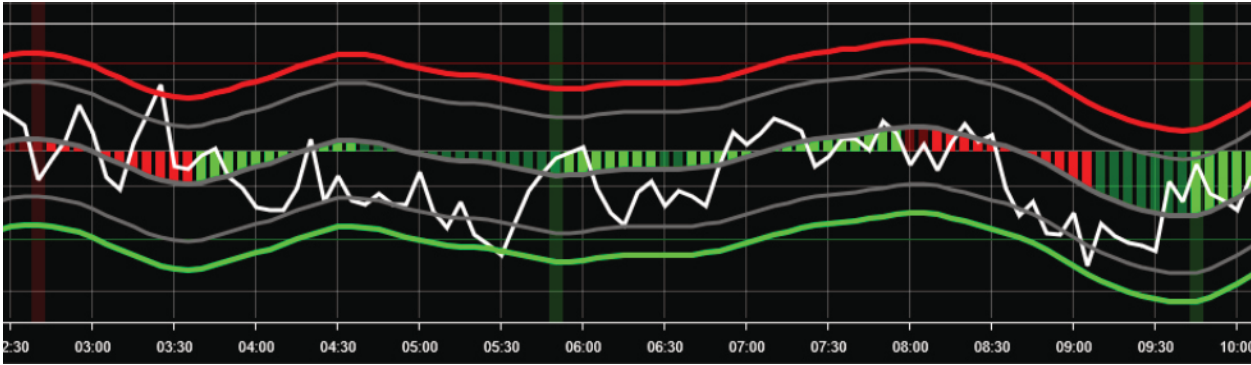
The white dash is the projected stop loss value. The white dot is the projected end of cycle time (which aligns to the white dash price).



8 The yellow line

This indicates the entry confirmation price.

OUR INDICATOR:



9 The graphs at the bottom of the screen

This graph represents the **QuantCycle Analysis**.

The red upper line and the green lower line make up the extreme region. These are your thresholds. This is what generates our signal.

The green bars represent the **upcycle**, and the red bars represent the **downcycle**.

The white line is the **detrend line**. As the **detrend** line moves further away from the gray middle line, there is an increased chance of a reversal.

The middle gray line represents what the price should be, based on thousands of data points and our **Artificial Intelligence (AI) and Machine Learning (ML)** driven indicator.

OUR INDICATOR:

QuantCycles is a tool that will help you with your daily trading decisions and increase the probability of making profitable trades in different time frames.

Our indicator will give you a directional indication of future market behavior. **Our Live Cycles** analysis is designed for **NinjaTrader 8**, our recommended trading platform used by traders all over the world.

NINJATRADER

→ [View our documentation on NinjaTrader](#)

→ [View our installation documentation for the QuantCycles indicator](#)

OUR END OF DAY ANALYSIS

We also offer **End of Day** analysis applied to the daily and weekly symbols. This option does not require a trading platform. You can access the End of Day files on our website. End of Day Analysis is generated at the end of each business day.

→ [Read more about QuantCycles End of Day Analysis](#)



Additional insight

Our analysis provides insight into the percentage completion of the current cycle phase at any given moment.

We extend this analysis into the future, highlighting projected turning points for the next directional shift.

If you have any additional questions please email

support@quantcycles.com