



# BONDS

OPPORTUNITIES EXTREMES

## About This Document

- This document contains two cyclical market patterns based on the QuantCycles Cycle Analysis Software
- **Cycle Continuation Opportunity** – These are defined as a deviation of the forecast direction that extend to the upper or lower extremes. There is a high probability that the market will return to the forecast direction within a projected time frame. A Dual Opportunity has a higher probability of returning to the forecast direction than a Single Opportunity.
  - Always look for market commonality. For example, if you're looking at a DOW30 stock to buy, does the index look positive as well?
  - As the market approaches the cycle forecast turning point, the probability of the market following that direction decays. This is indicated by the "Cycle Percent Complete" note at the top of the chart, as well as predicted duration dates
  - At an Opportunity, a strong market may continue to go against the forecast trend, therefore, we recommend waiting for confirmation of the turning point before acting on it.
  - If the Market has not returned to the direction of the cycle by the minimum expected cycle duration date, consider the cycle incorrect.

- **Cycle Extreme** – These are defined as a deviation of the forecast direction, but with a lesser probability of return to the forecast direction. A Dual Extreme is a stronger Support / Resistance than a Single Extreme.
  - The Cycle Continuation Opportunity information above applies here as well, but can be utilized more to take profits than to consider for entry
  - Indicates that a market is at or near a Cycle Support or Resistance.
  - There is a high probability of a market stall.

# Analysis Overview

- 1 Dual Opportunities
- 1 Dual Extremes
- 4 Single Extremes

# Cycle Continuation Opportunities

## 1 Dual Opportunities

- ^TNX - 10-Yield Year Index



# 10-Yield Year Index - Dual Opportunity



- Projected Direction Up with an Accuracy of 70.7%, and a Good Amplitude of 37°
- Expected Duration of Cycle is between 8/22/2024 and 9/26/2024
- Expected Price Movement of Cycle is between 190 and 270 Ticks

# Cycle Extremes

## 1 Dual Extremes

- ZB - 30-Year Bond Futures

- ZF - 5-Year Treasury Note Futures

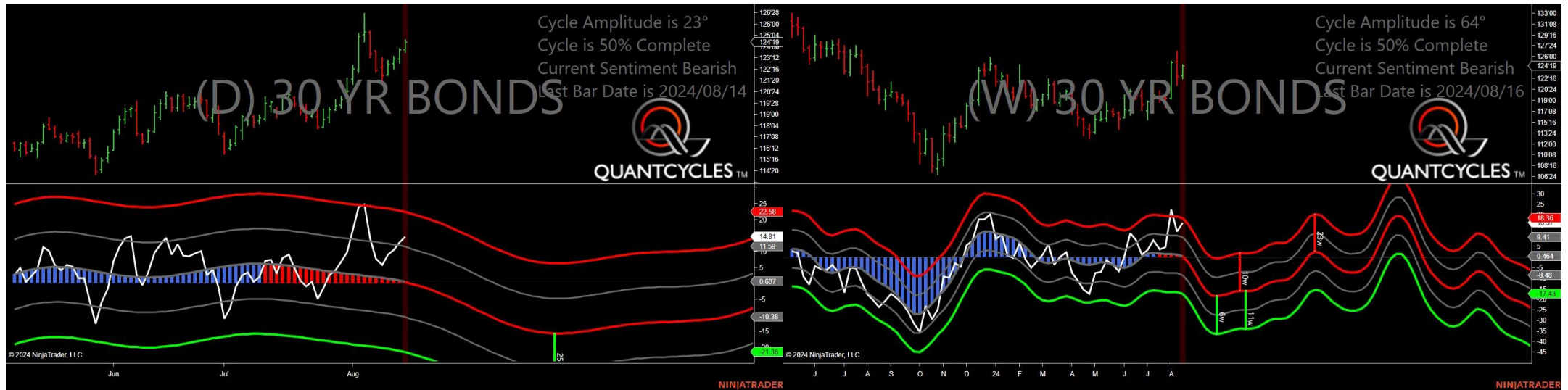
- ZN - 10-Year Yield Index

- ^FVX - 5-Year Treasury Note Yield Index

- ^TYX - 30-Year Yield Index

## 4 Single Extremes

# 30-Year Bond Futures - Dual Extreme



- Amplitude is 23° - Good
- Direction Accuracy is 69%
- Market is at Resistance Extreme - Expect market consolidation Between \$124.78125 and \$124.59375

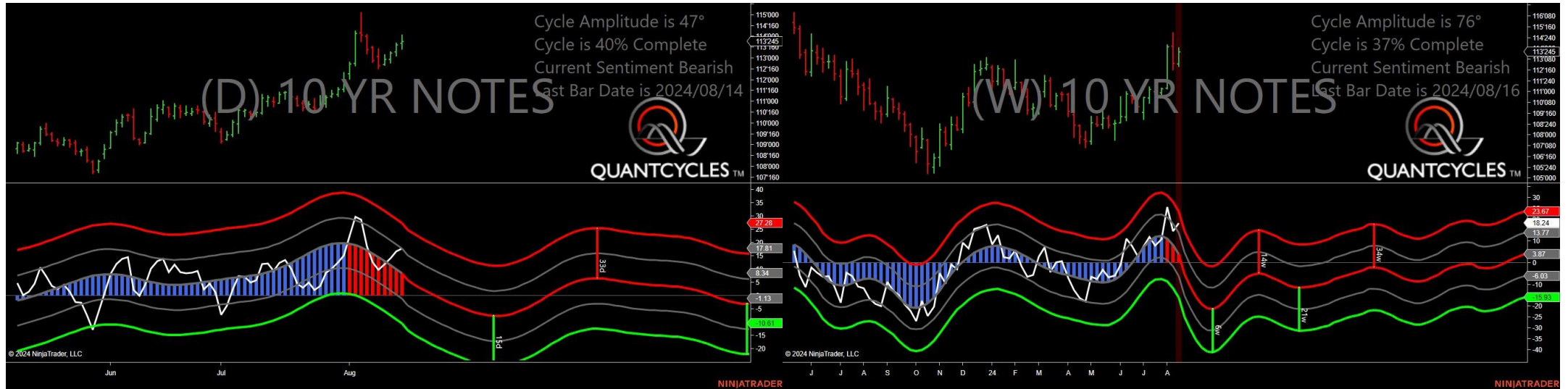


# 5-Year Treasury Note Futures - Single Daily Extreme



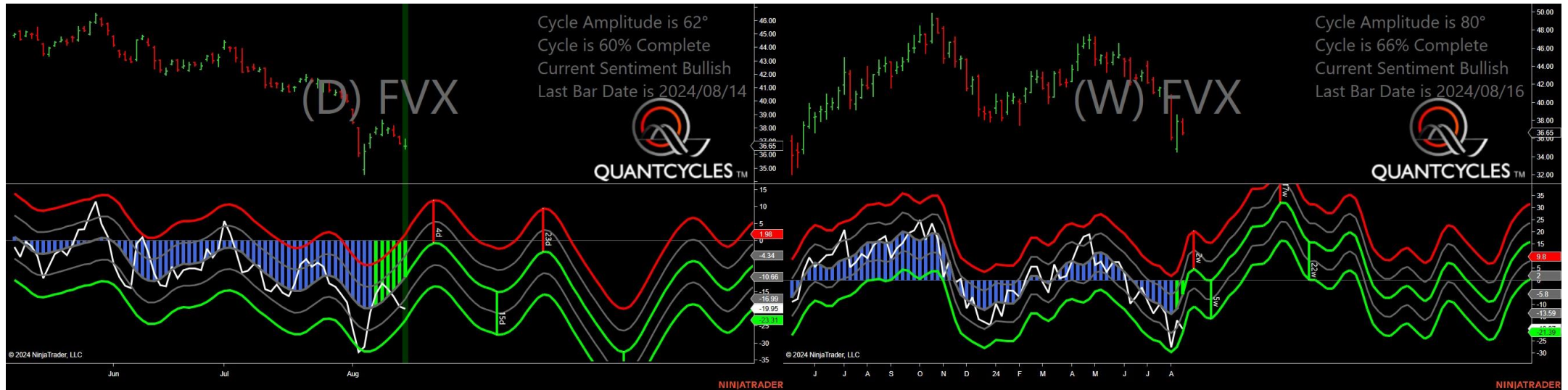
- Amplitude is 64° - Strong
- Direction Accuracy is 57.3%
- Market is at Resistance Extreme - Expect market consolidation Between \$109.5546875 and \$109.2734375

# 10-Year Yield Index - Single Weekly Extreme



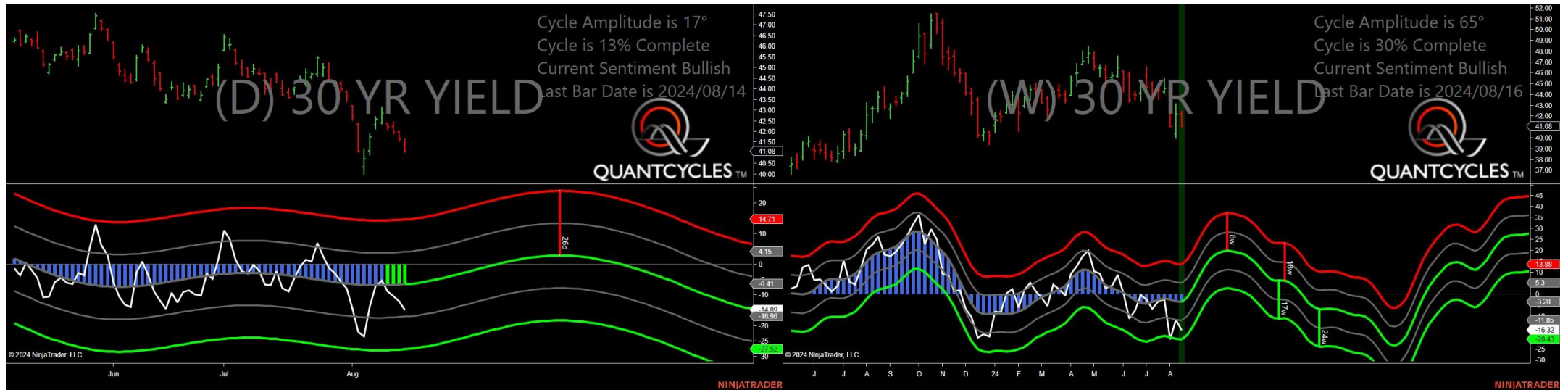
- Amplitude is 47° - Strong
- Direction Accuracy is 83.8%
- Market is at Resistance Extreme - Expect market consolidation Between \$114.0625 and \$113.765625

# 5-Year Treasury Note Yield Index - Single Daily Extreme



- Amplitude is 62° - Strong
- Direction Accuracy is 57.3%
- Market is at Support Extreme - Expect market consolidation Between \$36.65 and \$36.47

# 30-Yield Year Index - Single Weekly Extreme



- Amplitude is 17° - Weak
- Direction Accuracy is 89.3%
- Market is at Support Extreme - Expect market consolidation Between \$41.08 and \$41.04

