



QUANTCYCLES

COMMODITIES

OPPORTUNITIES & EXTREMES

About This Document

- This document contains two cyclical market patterns based on the QuantCycles Cycle Analysis Software
- **Cycle Continuation Opportunity** – These are defined as a deviation of the forecast direction that extend to the upper or lower extremes. There is a high probability that the market will return to the forecast direction within a projected time frame. A Dual Opportunity has a higher probability of returning to the forecast direction than a Single Opportunity.
 - Always look for market commonality. For example, if you're looking at a DOW30 stock to buy, does the index look positive as well?
 - As the market approaches the cycle forecast turning point, the probability of the market following that direction decays. This is indicated by the "Cycle Percent Complete" note at the top of the chart, as well as predicted duration dates
 - At an Opportunity, a strong market may continue to go against the forecast trend, therefore, we recommend waiting for confirmation of the turning point before acting on it.
 - If the Market has not returned to the direction of the cycle by the minimum expected cycle duration date, consider the cycle incorrect.
- **Cycle Extreme** – These are defined as a deviation of the forecast direction, but with a lessor probability of return to the forecast direction. A Dual Extreme is a stronger Support / Resistance than a Single Extreme.
 - The Cycle Continuation Opportunity information above applies here as well, but can be utilized more to take profits than to consider for entry
 - Indicates that a market is at or near a Cycle Support or Resistance.
 - There is a high probability of a market stall.

Analysis Overview

- 1 Dual Extremes
- 1 Single Extremes
- 21 Analysis

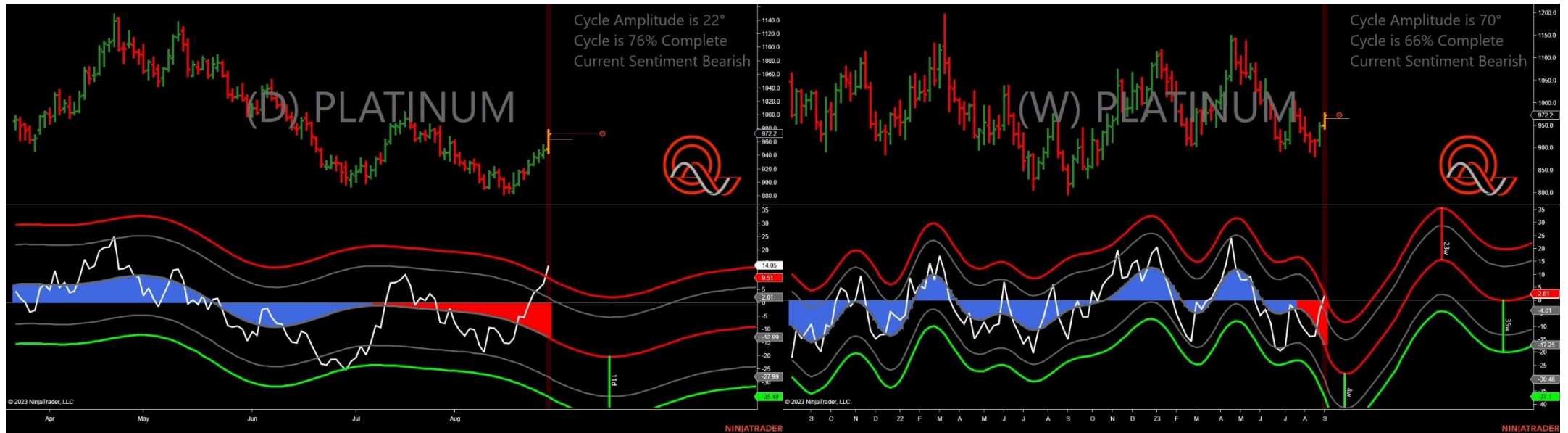
Cycle Extremes

1 Dual Extremes

1 Single Extremes

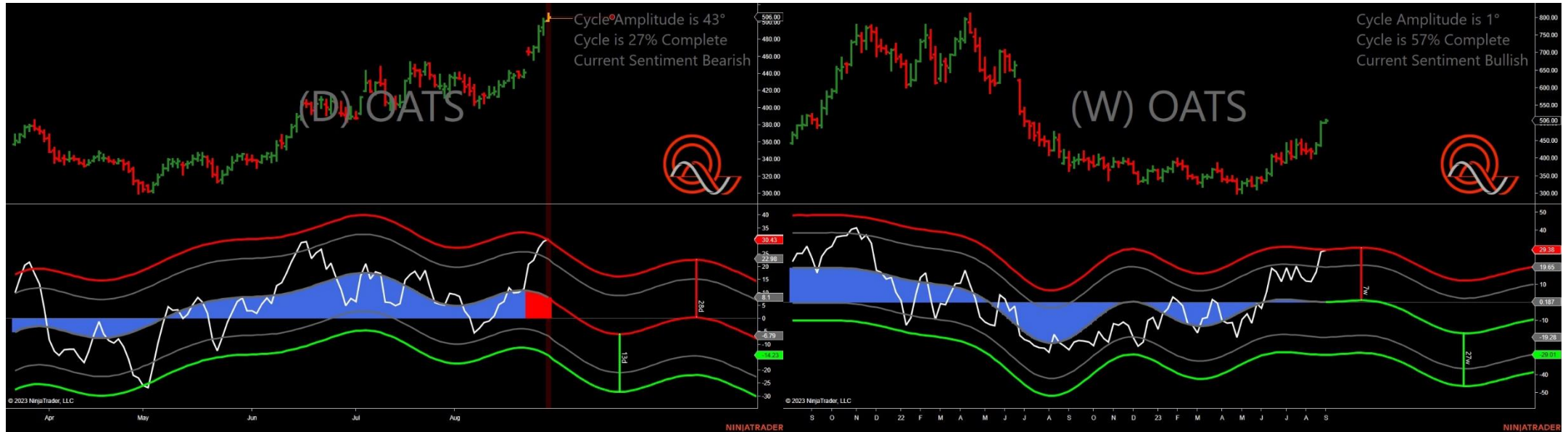
- PL - Platinum
- ZO - Oats

Platinum - Dual Extreme



- Amplitude is 22° - Good
- Direction Accuracy is 0%
- Market is at Resistance Extreme - Expect market consolidation Between \$977.3 and \$972.2

Oats - Single Daily Extreme



- Amplitude is 43° - Strong
- Direction Accuracy is 0%
- Market is at Resistance Extreme - Expect market consolidation Between \$510 and \$506

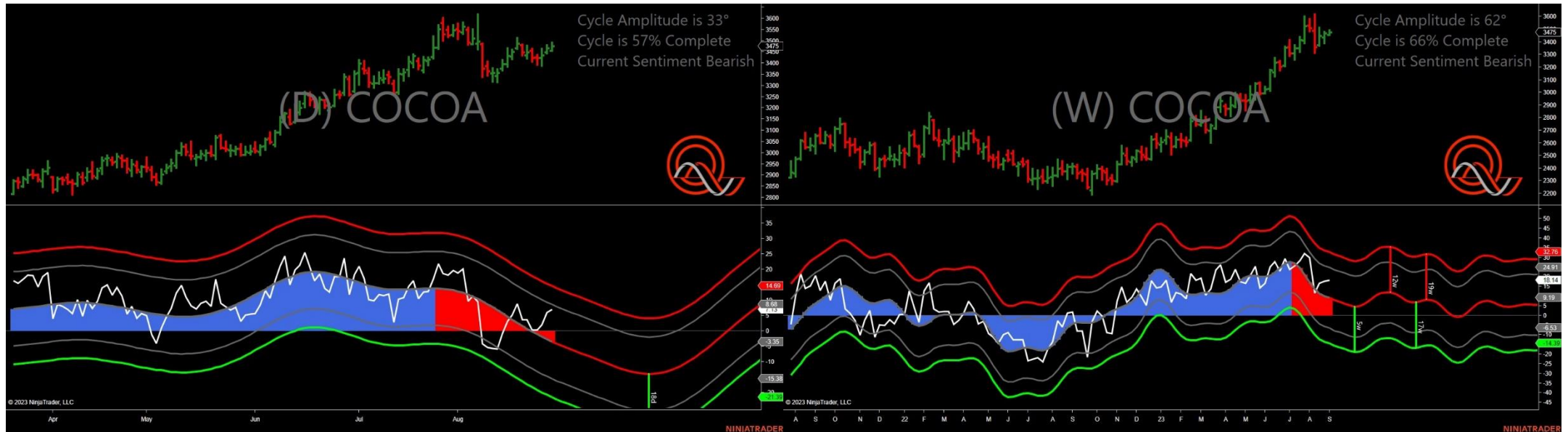
Analysis Charts

21 Charts

- CC - Cocoa
- CL - Crude Oil
- CT - Cotton
- GC - Gold
- GF - Feeder Cattle
- HE - Live Hogs
- HG - Copper
- HO - Heating Oil
- KC - Coffee
- LE - Live Cattle
- NG - Natural Gas
- OJ - Oranje Juice
- PA - Palladium
- RB - Unleaded Gas
- SB - Sugar
- SI - Silver
- ZC - Corn

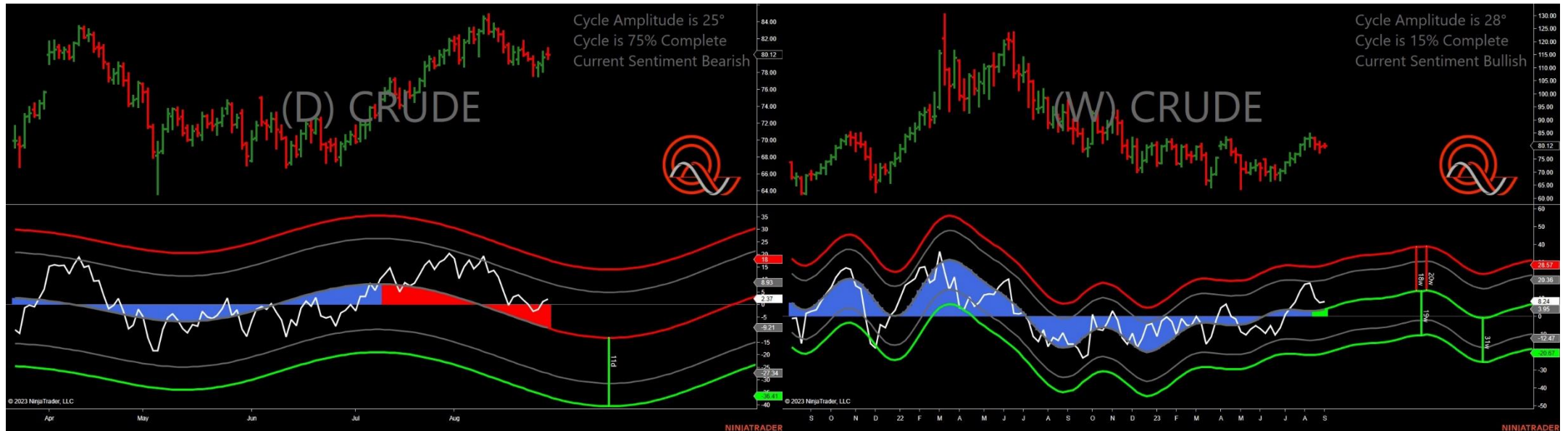
- ZL - Soybean Oil
- ZM - Soybean Meal
- ZS - Soybeans
- ZW - Wheat

Cocoa - Analysis Chart



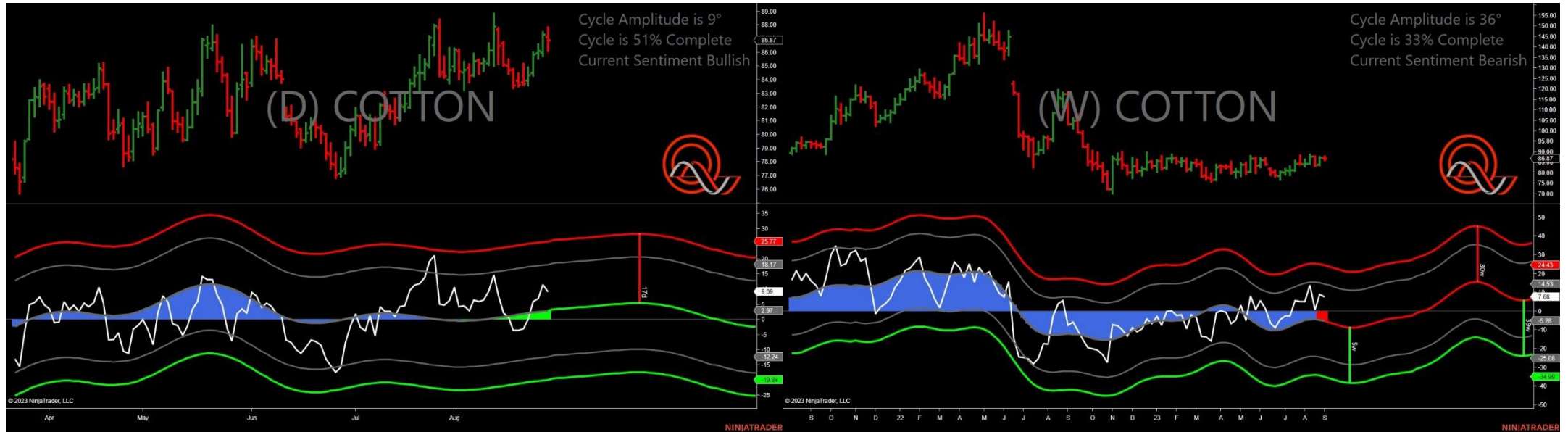
- Amplitude is 33° - Good
- Direction Accuracy is 0%
- Market is at Resistance Extreme - Expect market consolidation Between \$3492 and \$3475

Crude Oil - Analysis Chart



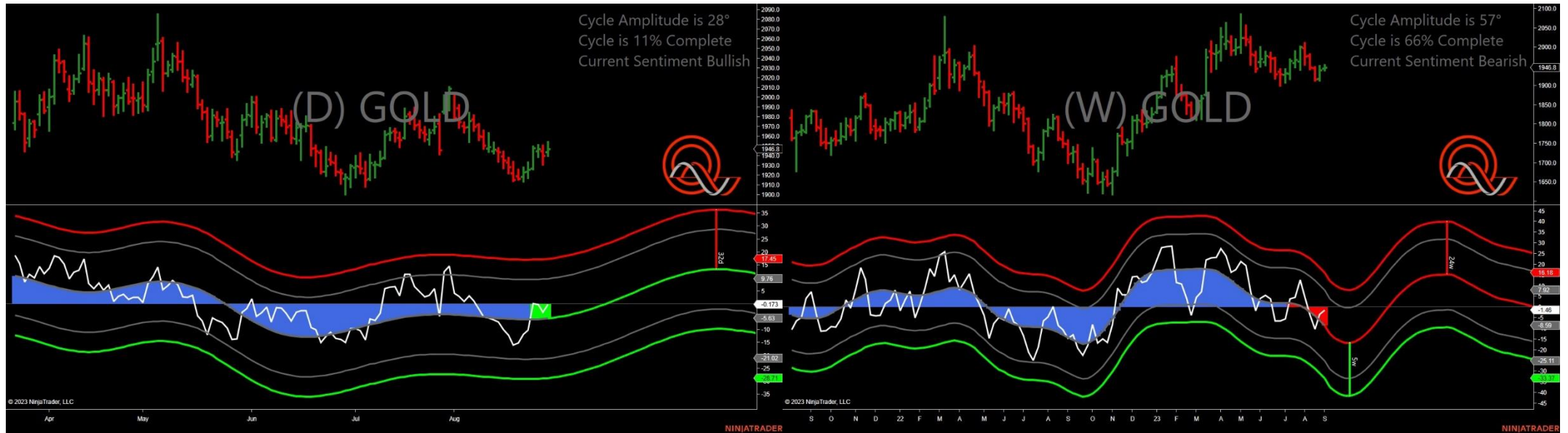
- Amplitude is 25° - Good
- Direction Accuracy is 0%
- Market is at Resistance Extreme - Expect market consolidation Between \$80.87 and \$80.15

Cotton - Analysis Chart



- Amplitude is 9° - Weak
- Direction Accuracy is 50%
- Market is at Support Extreme - Expect market consolidation Between \$86.87 and \$86.11

Gold - Analysis Chart



- Amplitude is 28° - Good
- Direction Accuracy is 50%
- Market is at Support Extreme - Expect market consolidation Between \$1944 and \$1940.1

Feeder Cattle - Analysis Chart



- Amplitude is 36° - Good
- Direction Accuracy is 50%
- Market is at Support Extreme - Expect market consolidation Between \$253.95 and \$253.925

Live Hogs - Analysis Chart



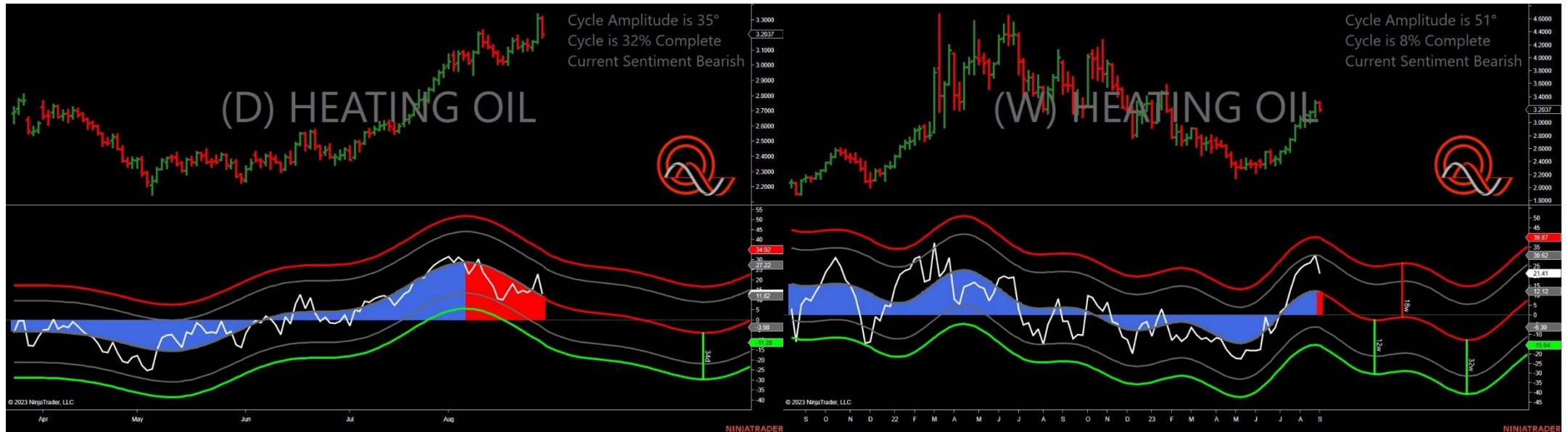
- Amplitude is 39° - Good
- Direction Accuracy is 50%
- Market is at Support Extreme - Expect market consolidation Between \$78.9 and \$78.85

Copper - Analysis Chart



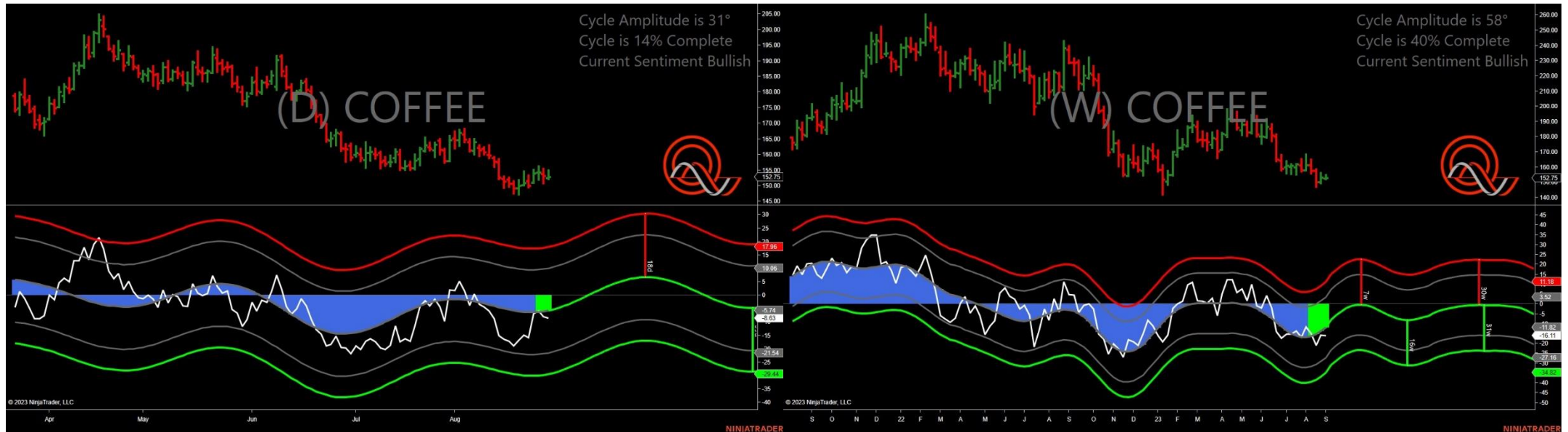
- Amplitude is 6° - Weak
- Direction Accuracy is 50%
- Market is at Support Extreme - Expect market consolidation Between \$3.756 and \$3.7505

Heating Oil - Analysis Chart



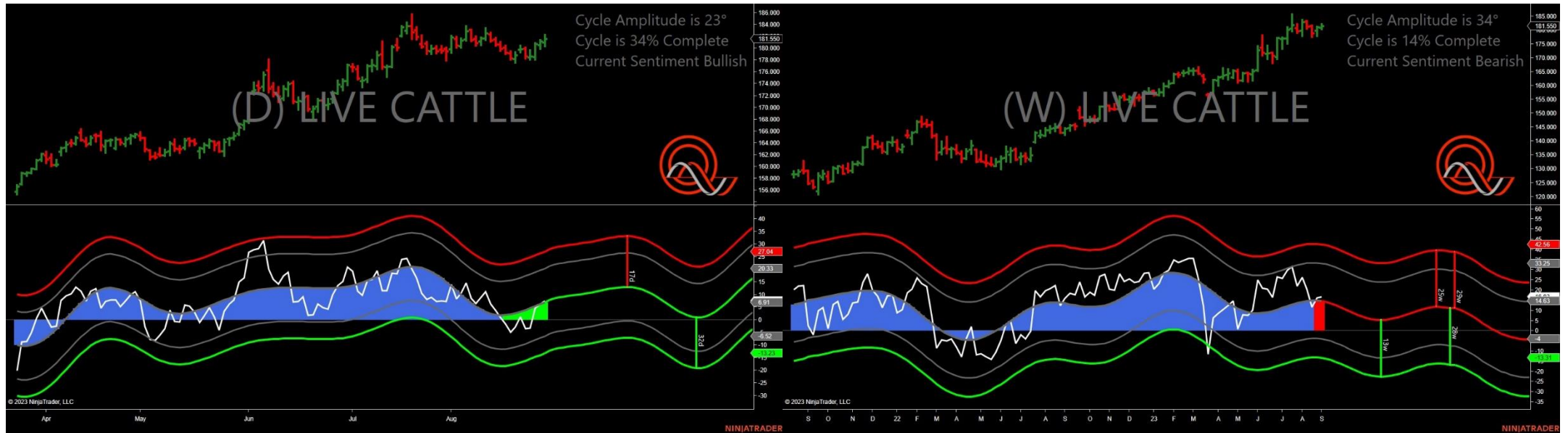
- Amplitude is 35° - Good
- Direction Accuracy is 0%
- Market is at Resistance Extreme - Expect market consolidation Between \$3.32 and \$3.311

Coffee - Analysis Chart



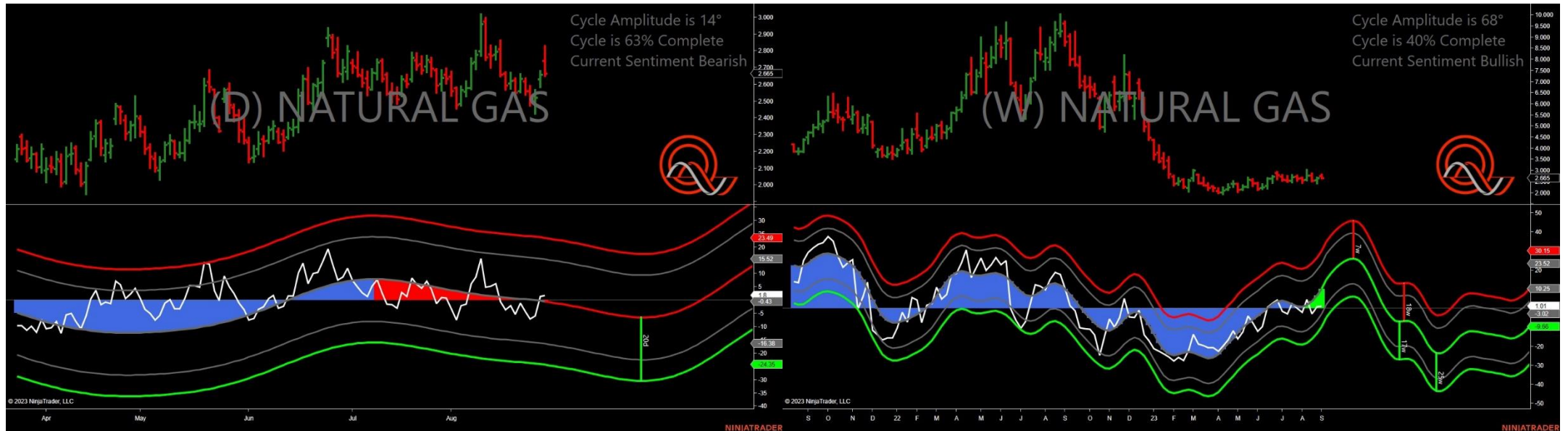
- Amplitude is 31° - Good
- Direction Accuracy is 50%
- Market is at Support Extreme - Expect market consolidation Between \$152.5 and \$152.1

Live Cattle - Analysis Chart



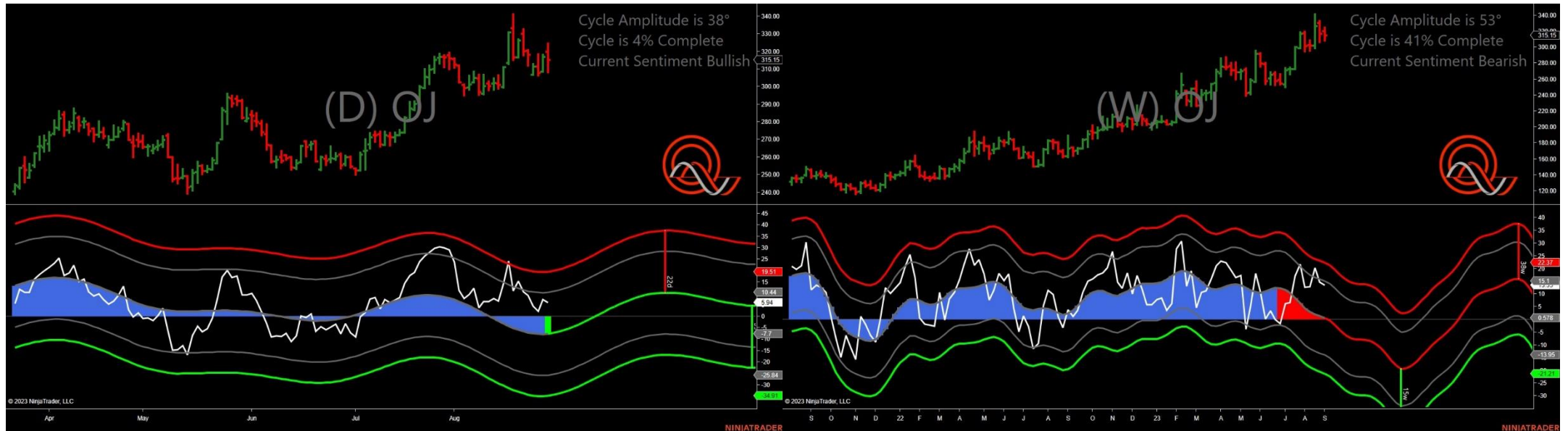
- Amplitude is 23° - Good
- Direction Accuracy is 50%
- Market is at Support Extreme - Expect market consolidation Between \$180.95 and \$180.4

Natural Gas - Analysis Chart



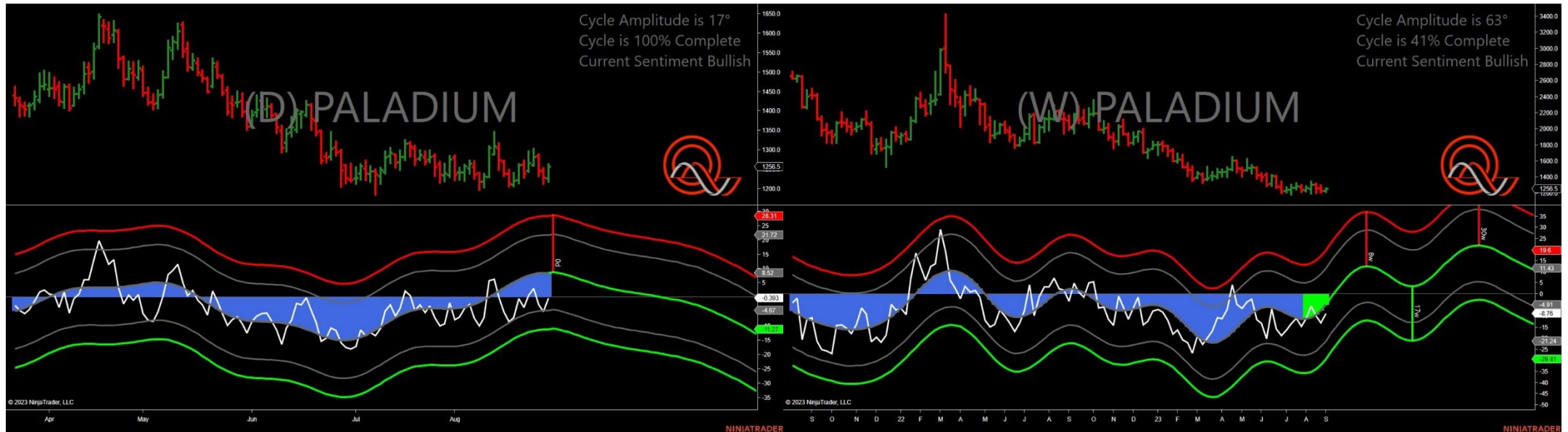
- Amplitude is 14° - Weak
- Direction Accuracy is 0%
- Market is at Resistance Extreme - Expect market consolidation Between \$2.829 and \$2.74

Oranje Juice - Analysis Chart



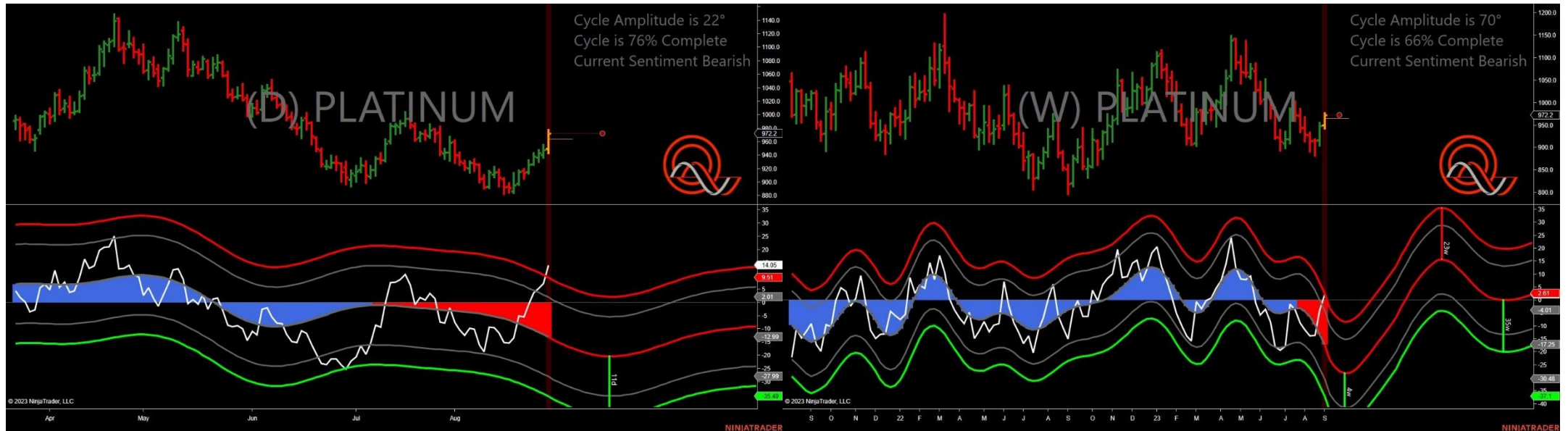
- Amplitude is 38° - Good
- Direction Accuracy is 50%
- Market is at Support Extreme - Expect market consolidation Between \$315.15 and \$308.3

Palladium - Analysis Chart



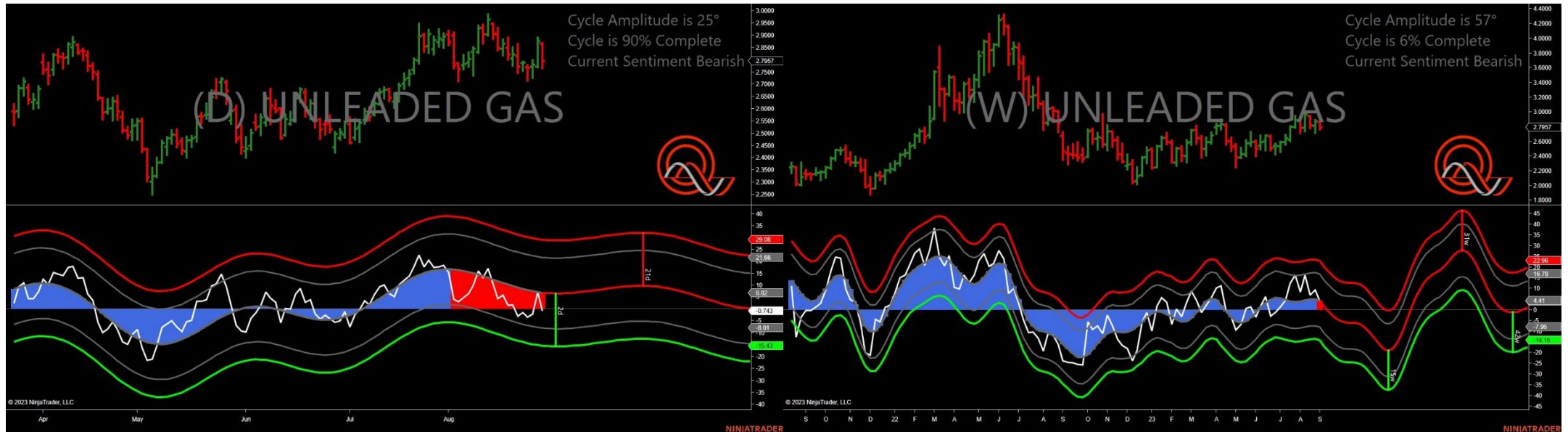
- Amplitude is 17° - Weak
- Direction Accuracy is 50%
- Market is at Support Extreme - Expect market consolidation Between \$1226.5 and \$1217.5

Platinum - Analysis Chart



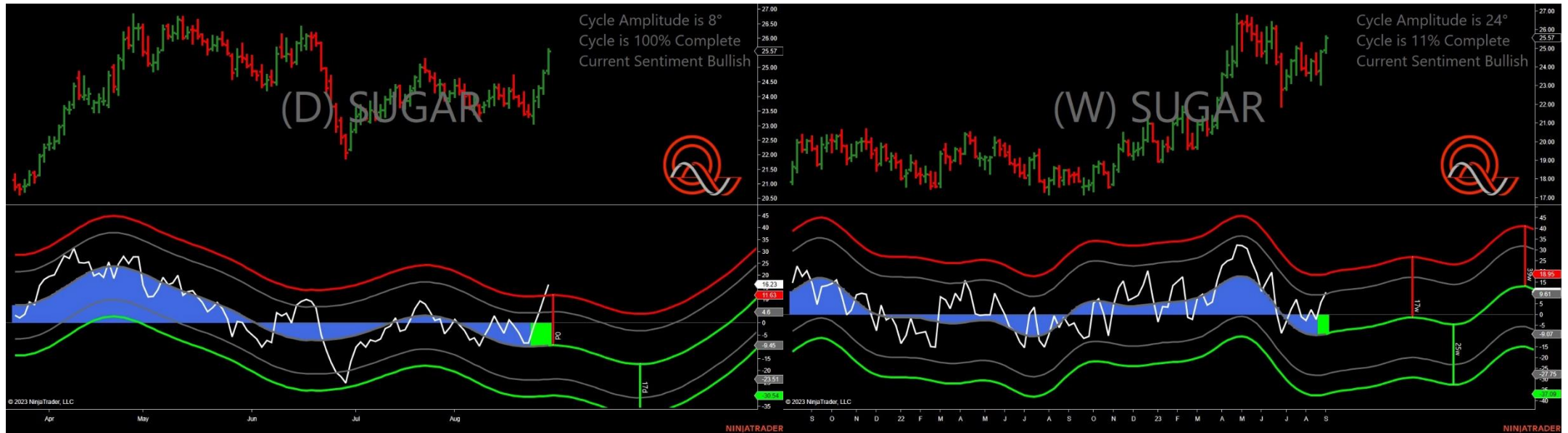
- Amplitude is 22° - Good
- Direction Accuracy is 0%
- Market is at Resistance Extreme - Expect market consolidation Between \$977.3 and \$972.2

Unleaded Gas - Analysis Chart



- Amplitude is 25° - Good
- Direction Accuracy is 0%
- Market is at Resistance Extreme - Expect market consolidation Between \$2.8689 and \$2.8658

Sugar - Analysis Chart



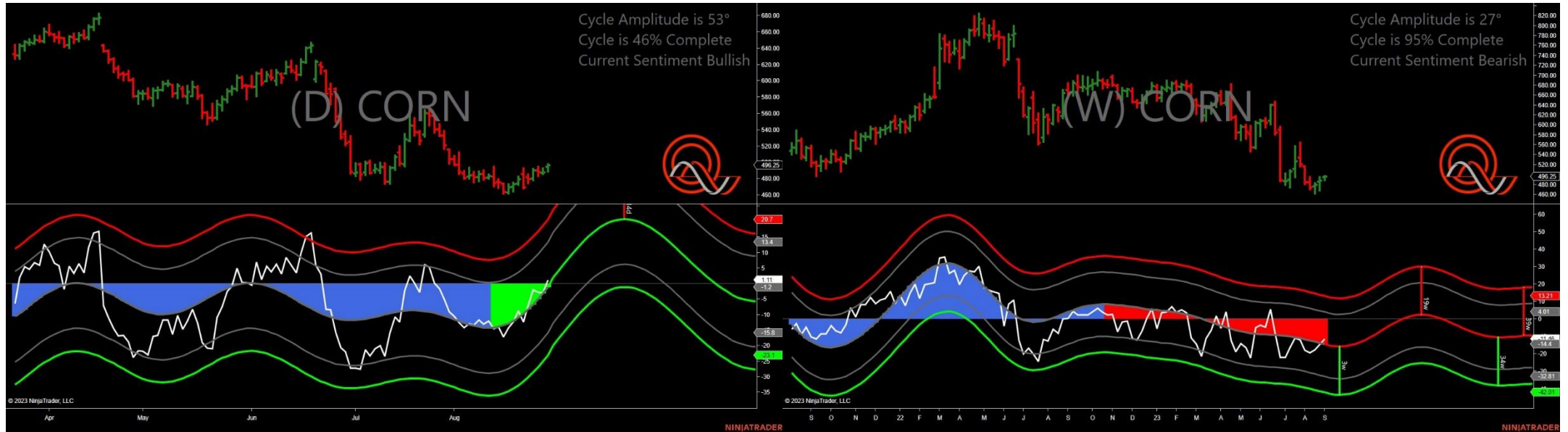
- Amplitude is 8° - Weak
- Direction Accuracy is 50%
- Market is at Support Extreme - Expect market consolidation Between \$24.9 and \$24.78

Silver - Analysis Chart



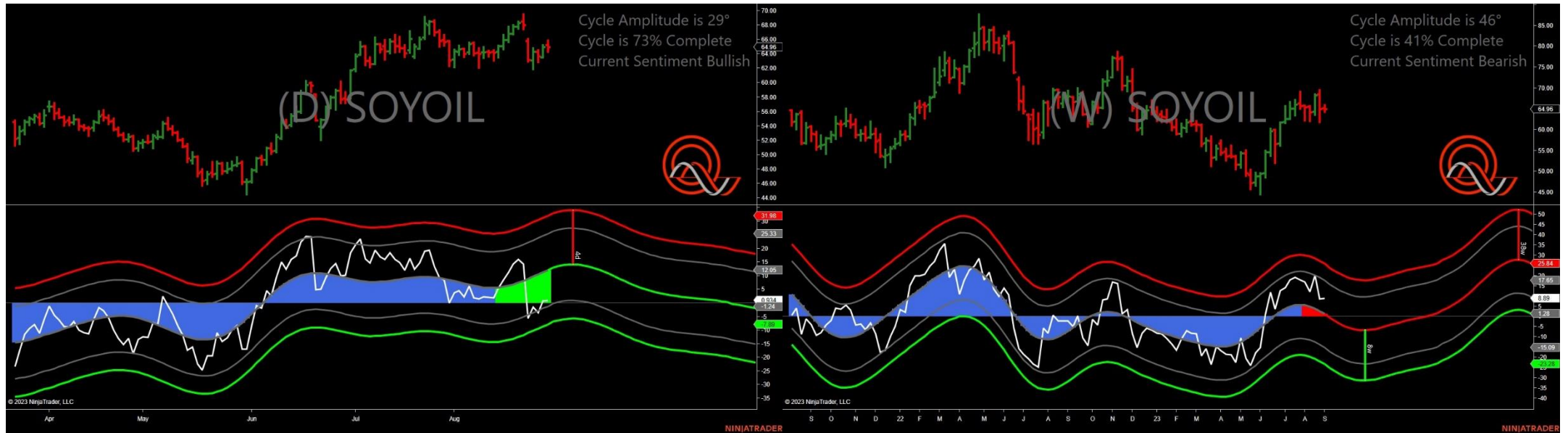
- Amplitude is 6° - Weak
- Direction Accuracy is 0%
- Market is at Resistance Extreme - Expect market consolidation Between \$24.395 and \$24.275

Corn - Analysis Chart



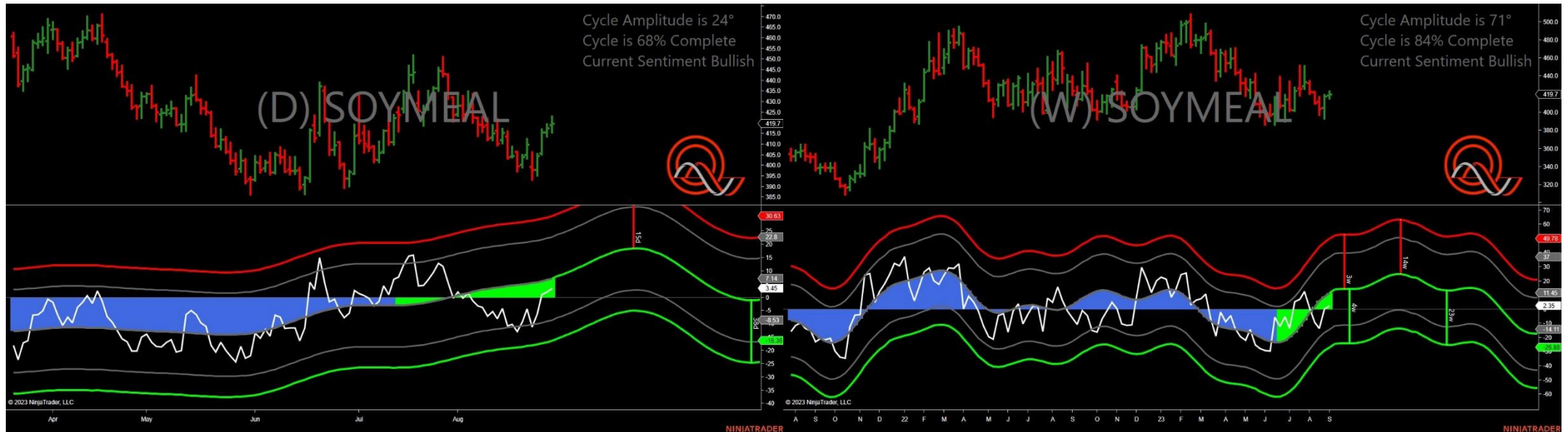
- Amplitude is 53° - Strong
- Direction Accuracy is 50%
- Market is at Support Extreme - Expect market consolidation Between \$494.5 and \$489.25

Soybean Oil - Analysis Chart



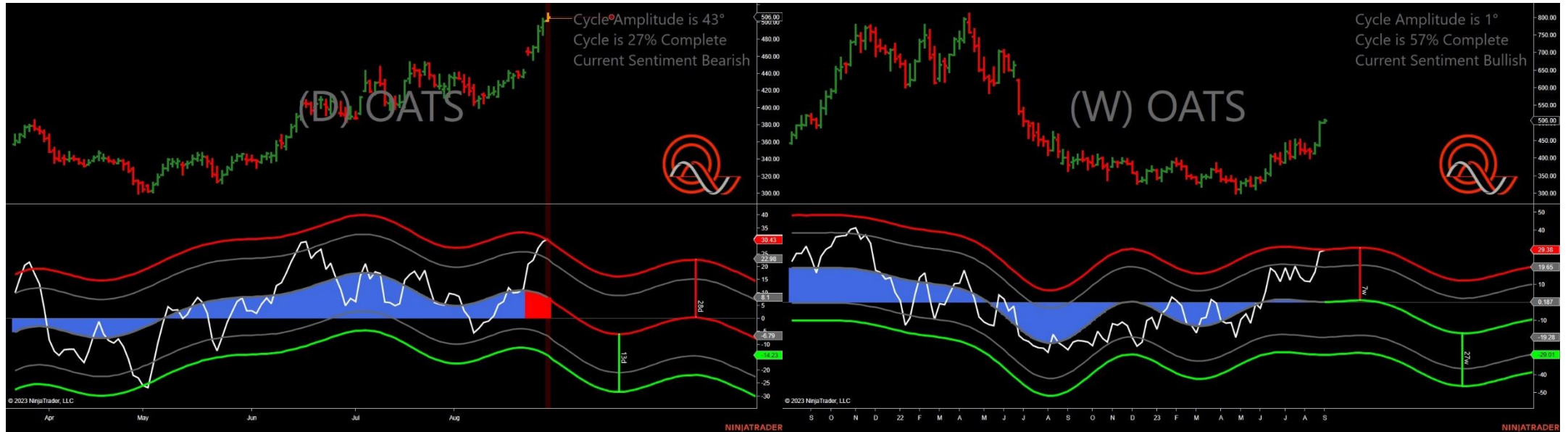
- Amplitude is 29° - Good
- Direction Accuracy is 50%
- Market is at Support Extreme - Expect market consolidation Between \$64.96 and \$64.27

Soybean Meal - Analysis Chart



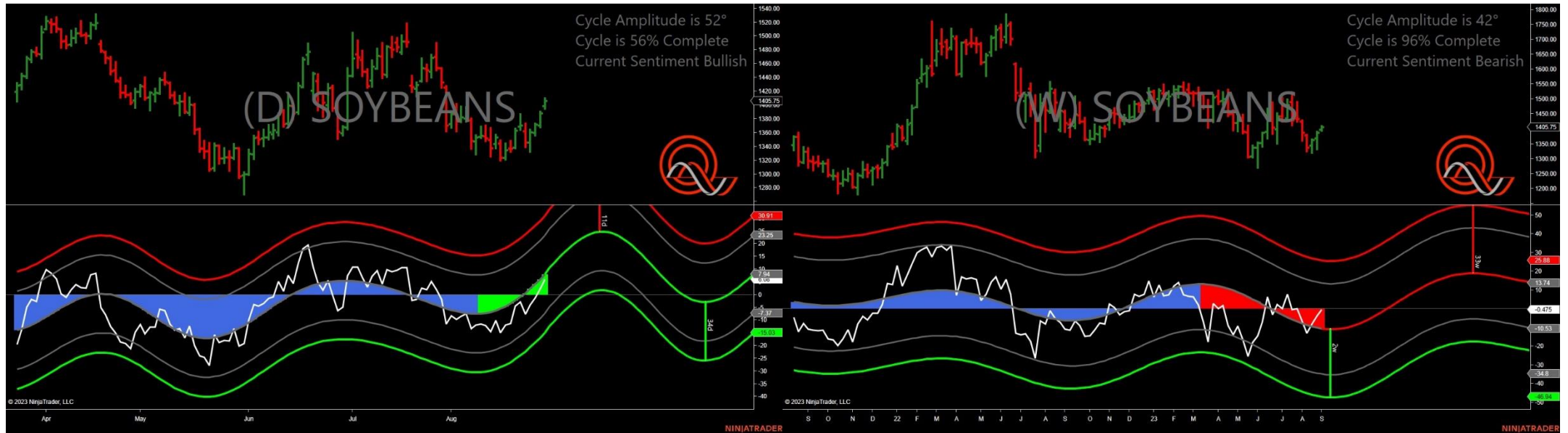
- Amplitude is 24° - Good
- Direction Accuracy is 50%
- Market is at Support Extreme - Expect market consolidation Between \$418.9 and \$415.5

Oats - Analysis Chart



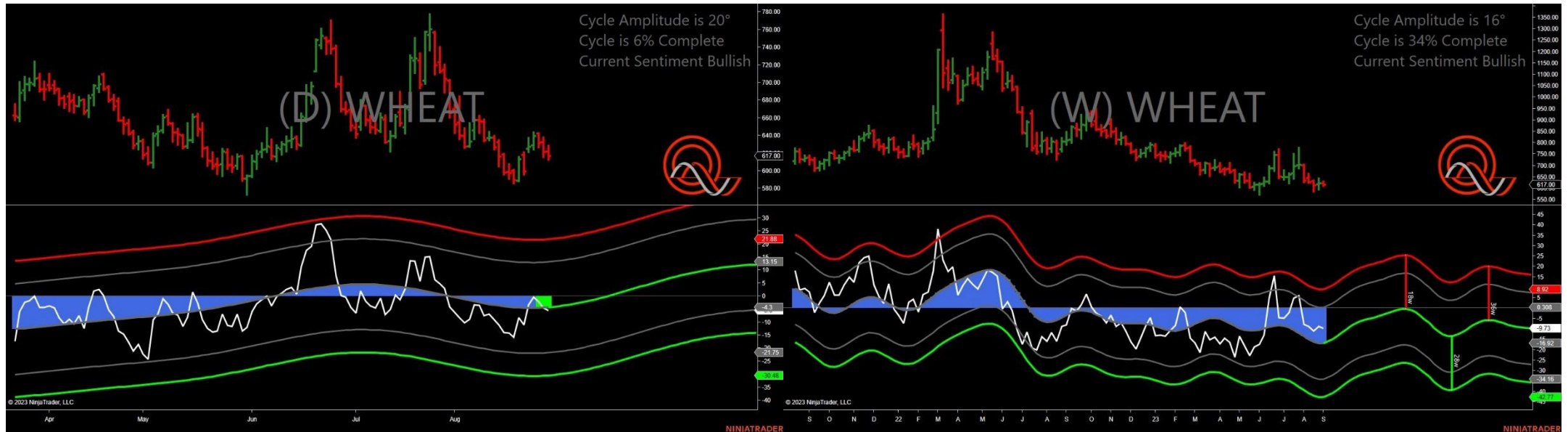
- Amplitude is 43° - Strong
- Direction Accuracy is 0%
- Market is at Resistance Extreme - Expect market consolidation Between \$510 and \$506

Soybeans - Analysis Chart



- Amplitude is 52° - Strong
- Direction Accuracy is 50%
- Market is at Support Extreme - Expect market consolidation Between \$1398.25 and \$1394.75

Wheat - Analysis Chart



- Amplitude is 20° - Weak
- Direction Accuracy is 50%
- Market is at Support Extreme - Expect market consolidation Between \$617 and \$612.5