



QUANTCYCLES

COMMODITIES

OPPORTUNITIES & EXTREMES

About This Document

- This document contains two cyclical market patterns based on the QuantCycles Cycle Analysis Software
- **Cycle Continuation Opportunity** – These are defined as a deviation of the forecast direction that extend to the upper or lower extremes. There is a high probability that the market will return to the forecast direction within a projected time frame. A Dual Opportunity has a higher probability of returning to the forecast direction than a Single Opportunity.
 - Always look for market commonality. For example, if you're looking at a DOW30 stock to buy, does the index look positive as well?
 - As the market approaches the cycle forecast turning point, the probability of the market following that direction decays. This is indicated by the "Cycle Percent Complete" note at the top of the chart, as well as predicted duration dates
 - At an Opportunity, a strong market may continue to go against the forecast trend, therefore, we recommend waiting for confirmation of the turning point before acting on it.
 - If the Market has not returned to the direction of the cycle by the minimum expected cycle duration date, consider the cycle incorrect.
- **Cycle Extreme** – These are defined as a deviation of the forecast direction, but with a lessor probability of return to the forecast direction. A Dual Extreme is a stronger Support / Resistance than a Single Extreme.
 - The Cycle Continuation Opportunity information above applies here as well, but can be utilized more to take profits than to consider for entry
 - Indicates that a market is at or near a Cycle Support or Resistance.
 - There is a high probability of a market stall.

Analysis Overview

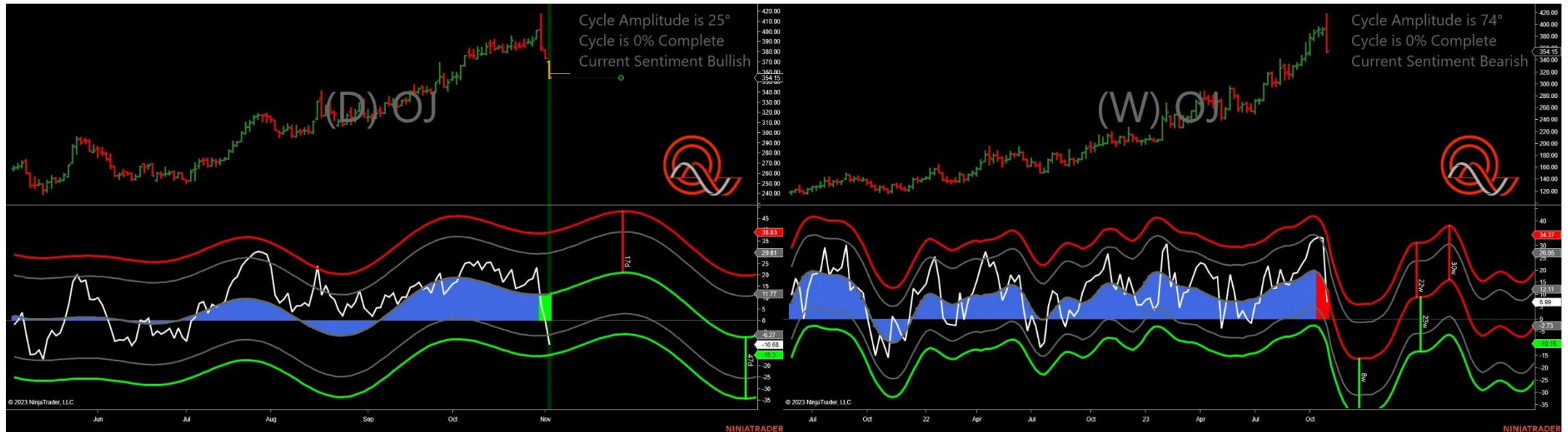
- 1 Single Extremes
- 22 Analysis

Cycle Extremes

1 Single Extremes

- OJ - Oranje Juice

Oranje Juice - Single Daily Extreme



- Amplitude is 25° - Good
- Direction Accuracy is 90.6%
- Market is at Support Extreme - Expect market consolidation Between \$354.15 and \$353.7

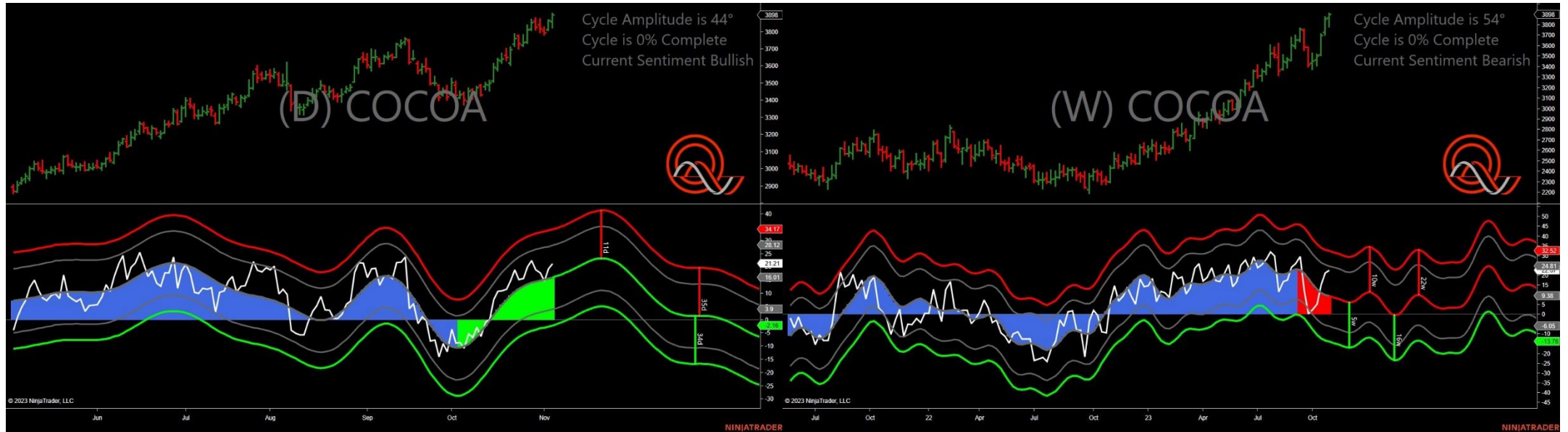
Analysis Charts

22 Charts

- CC - Cocoa
- CL - Crude Oil
- CT - Cotton
- GC - Gold
- GF - Feeder Cattle
- HE - Live Hogs
- HG - Copper
- HO - Heating Oil
- KC - Coffee
- LE - Live Cattle
- NG - Natural Gas
- PA - Palladium
- PL - Platinum
- RB - Unleaded Gas
- SB - Sugar
- SI - Silver
- ZC - Corn

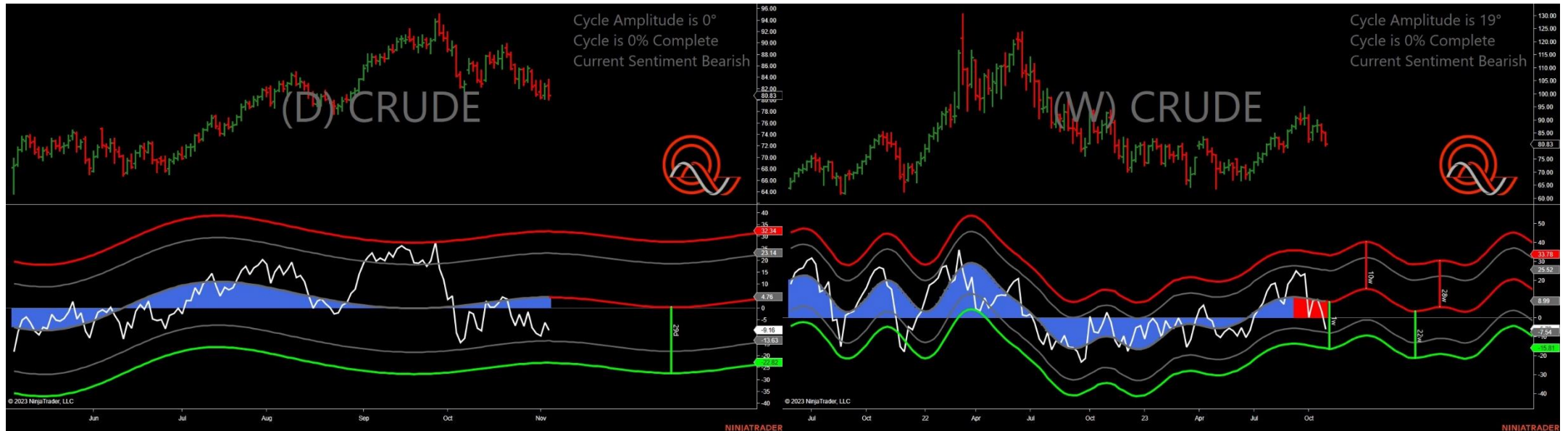
- ZL - Soybean Oil
- ZM - Soybean Meal
- ZO - Oats
- ZS - Soybeans
- ZW - Wheat

Cocoa - Analysis Chart



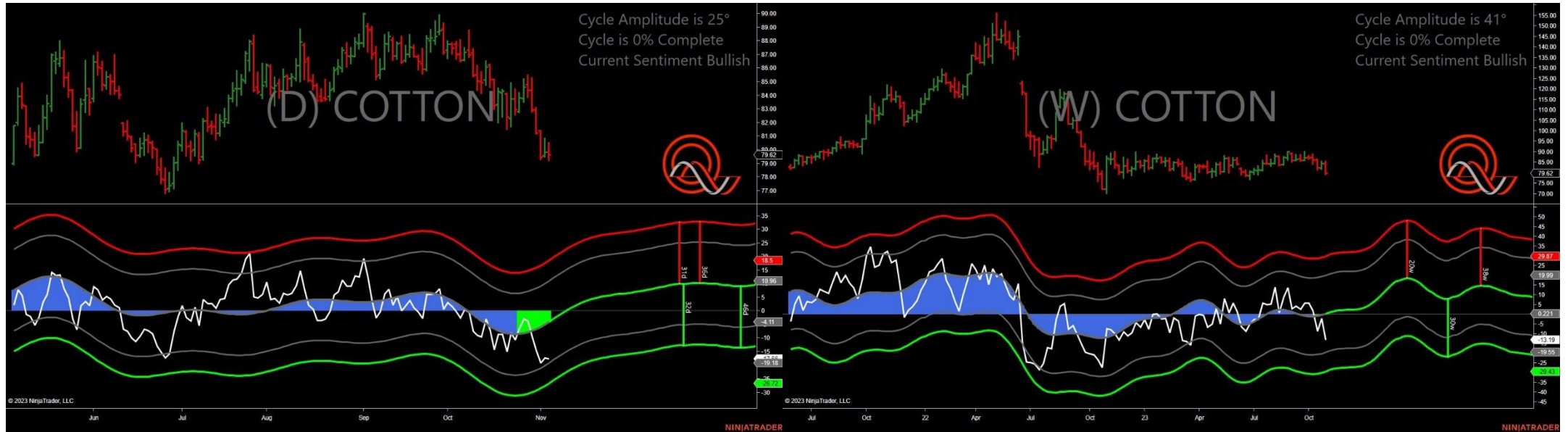
- Amplitude is 44° - Strong
- Direction Accuracy is 84.1%
- Market is at Support Extreme - Expect market consolidation Between \$3859 and \$3823

Crude Oil - Analysis Chart



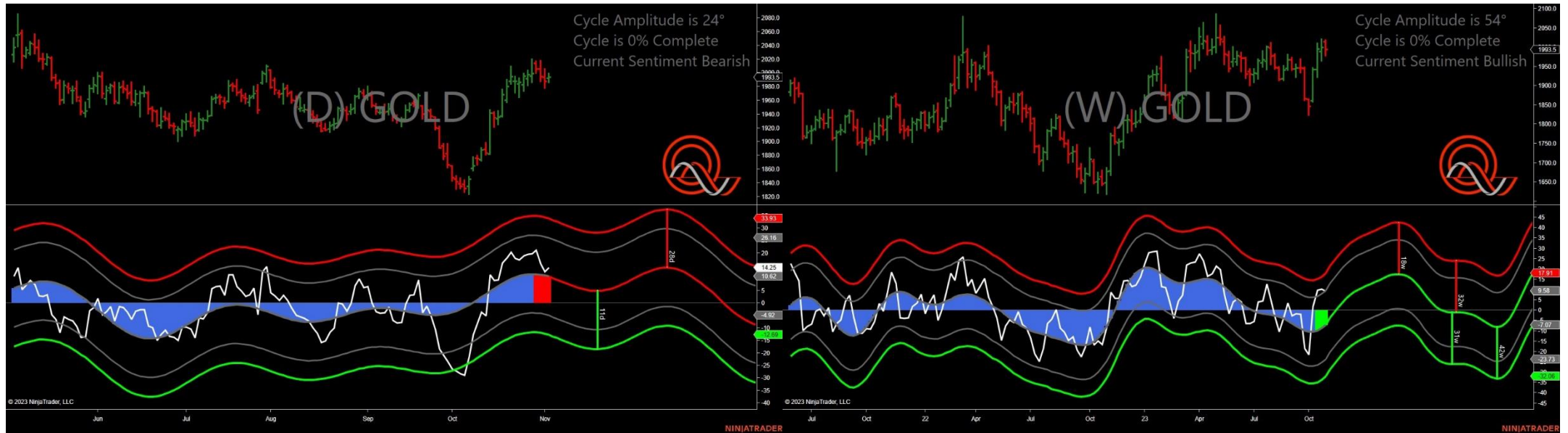
- Amplitude is 0° - Weak
- Direction Accuracy is 54%
- Market is at Resistance Extreme - Expect market consolidation Between \$83.6 and \$82.58

Cotton - Analysis Chart



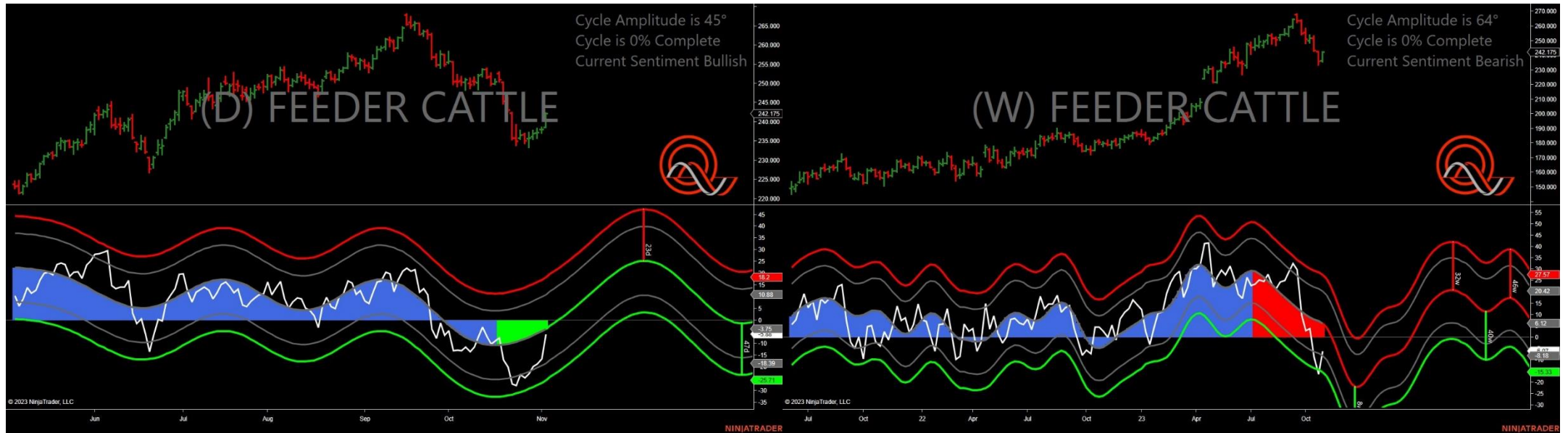
- Amplitude is 25° - Good
- Direction Accuracy is 63.3%
- Market is at Support Extreme - Expect market consolidation Between \$79.62 and \$79.2

Gold - Analysis Chart



- Amplitude is 24° - Good
- Direction Accuracy is 60.6%
- Market is at Resistance Extreme - Expect market consolidation Between \$1999.2 and \$1993.5

Feeder Cattle - Analysis Chart



- Amplitude is 45° - Strong
- Direction Accuracy is 58.7%
- Market is at Support Extreme - Expect market consolidation Between \$238.55 and \$238.55

Live Hogs - Analysis Chart



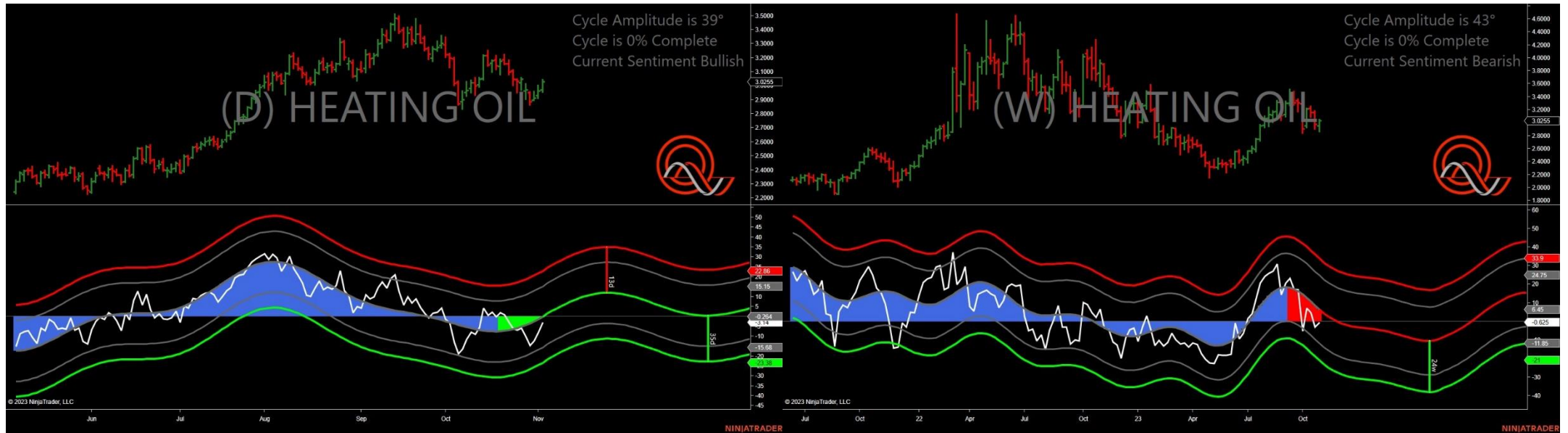
- Amplitude is 37° - Good
- Direction Accuracy is 92.8%
- Market is at Resistance Extreme - Expect market consolidation Between \$73.375 and \$73.275

Copper - Analysis Chart



- Amplitude is 6° - Weak
- Direction Accuracy is 75.1%
- Market is at Support Extreme - Expect market consolidation Between \$3.6605 and \$3.6565

Heating Oil - Analysis Chart



- Amplitude is 39° - Good
- Direction Accuracy is 88.4%
- Market is at Support Extreme - Expect market consolidation Between \$2.9678 and \$2.9553

Coffee - Analysis Chart



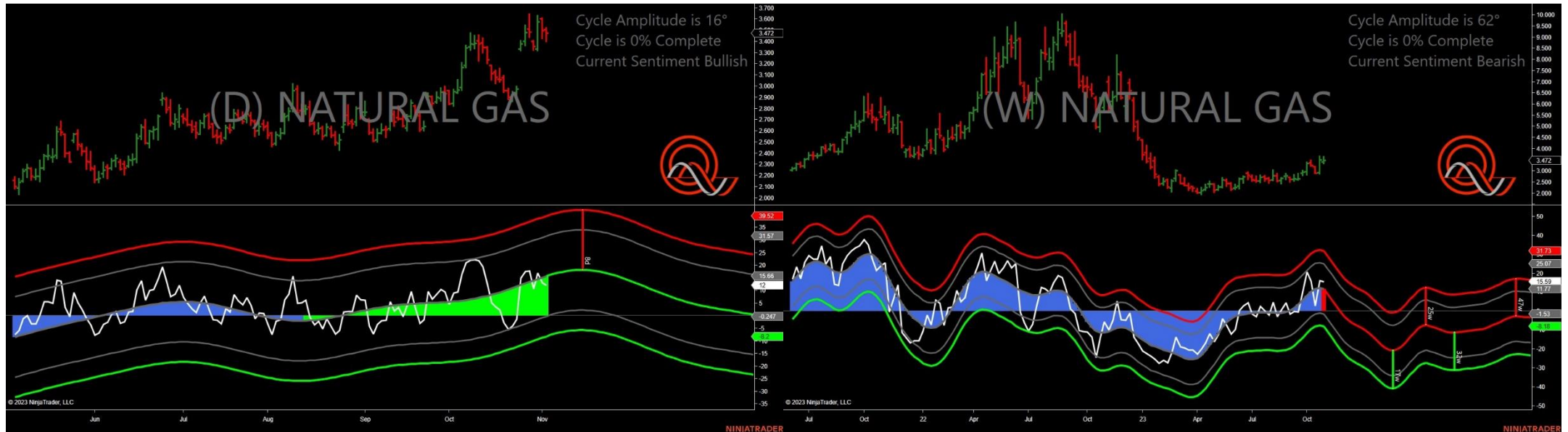
- Amplitude is 37° - Good
- Direction Accuracy is 89.4%
- Market is at Support Extreme - Expect market consolidation Between \$160.7 and \$160

Live Cattle - Analysis Chart



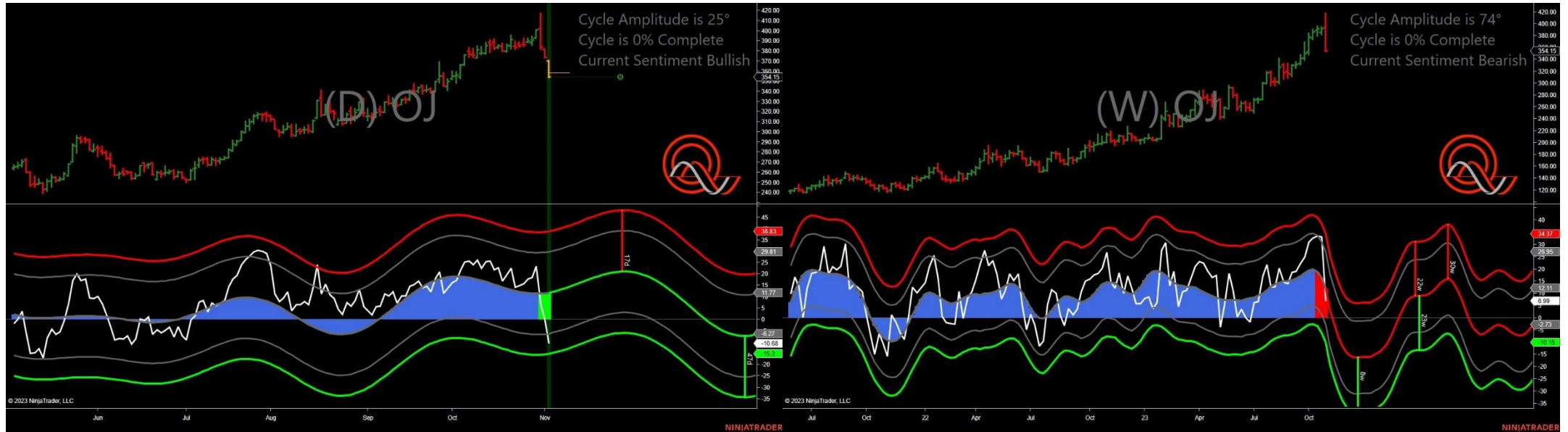
- Amplitude is 35° - Good
- Direction Accuracy is 77.4%
- Market is at Support Extreme - Expect market consolidation Between \$184 and \$183.925

Natural Gas - Analysis Chart



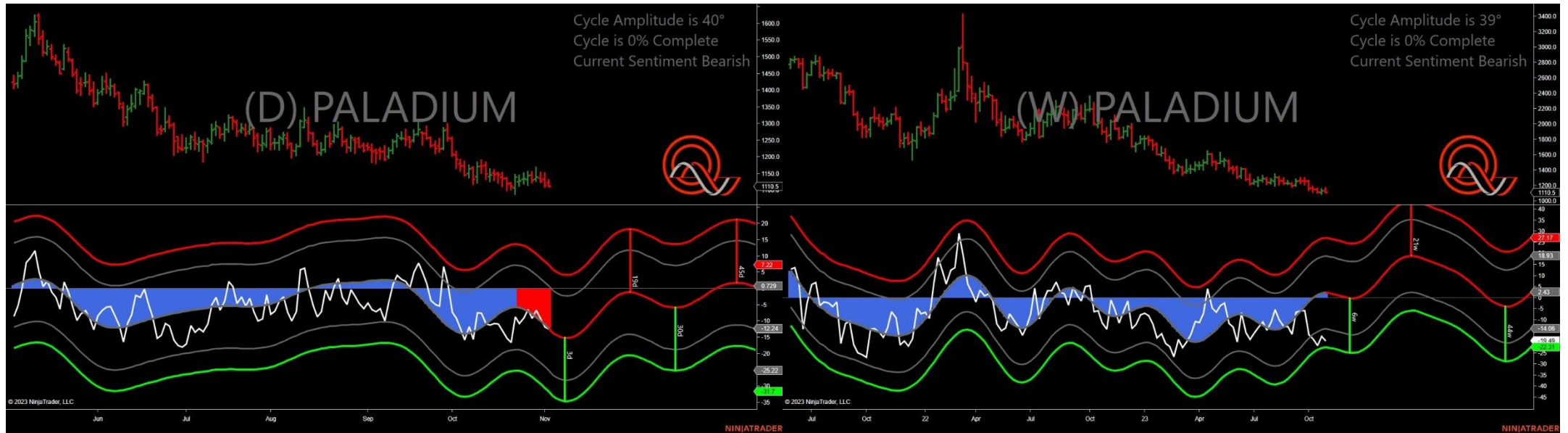
- Amplitude is 16° - Weak
- Direction Accuracy is 96.2%
- Market is at Support Extreme - Expect market consolidation Between \$3.472 and \$3.401

Oranje Juice - Analysis Chart



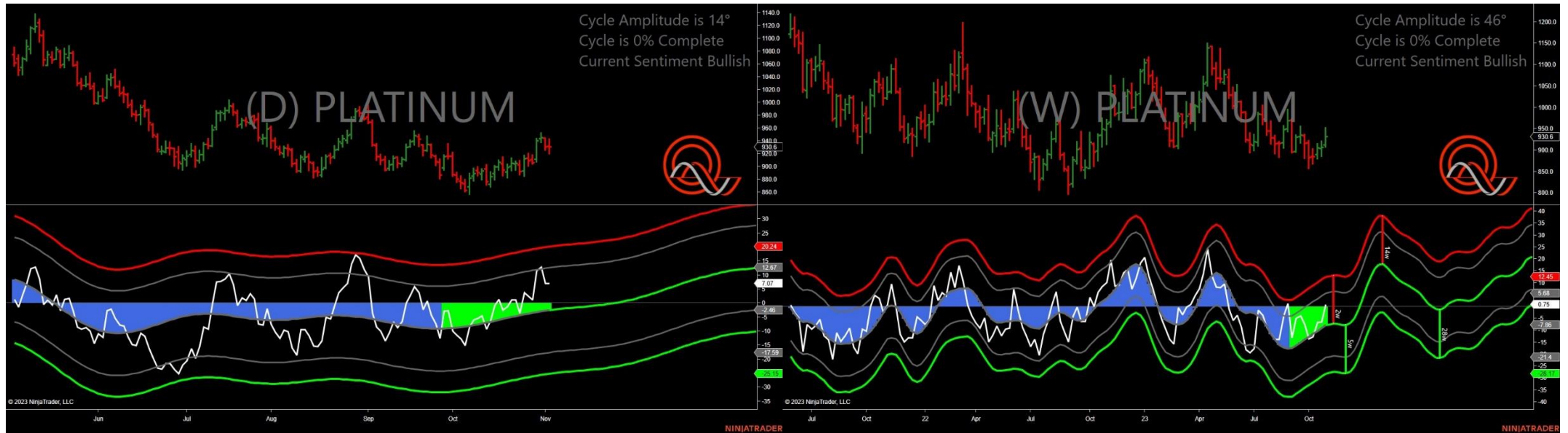
- Amplitude is 25° - Good
- Direction Accuracy is 90.6%
- Market is at Support Extreme - Expect market consolidation Between \$354.15 and \$353.7

Palladium - Analysis Chart



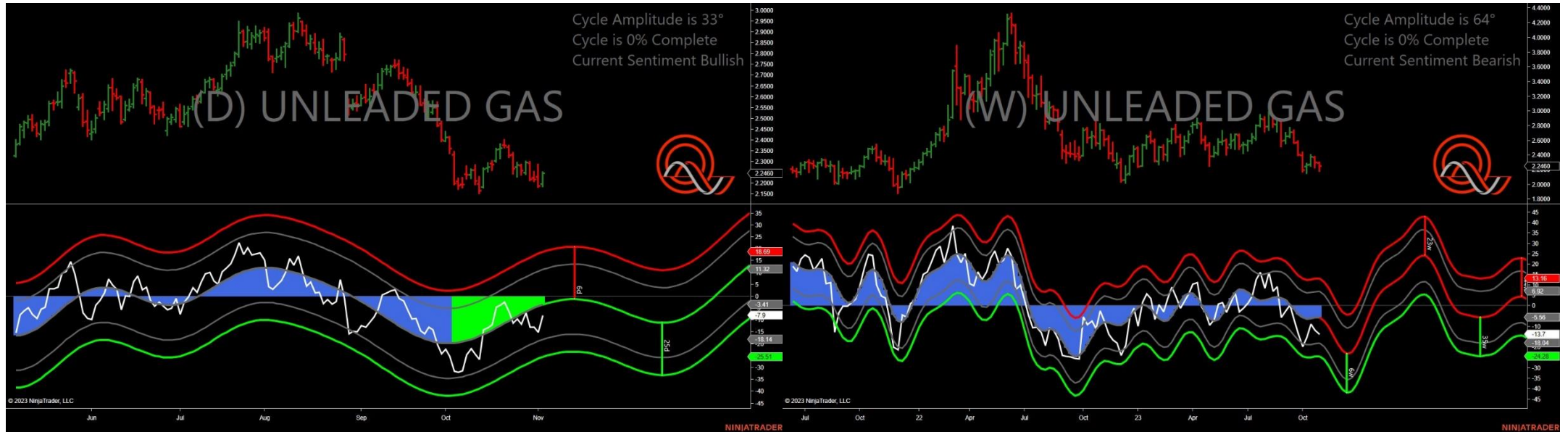
- Amplitude is 40° - Good
- Direction Accuracy is 65.2%
- Market is at Resistance Extreme - Expect market consolidation Between \$1131.5 and \$1122

Platinum - Analysis Chart



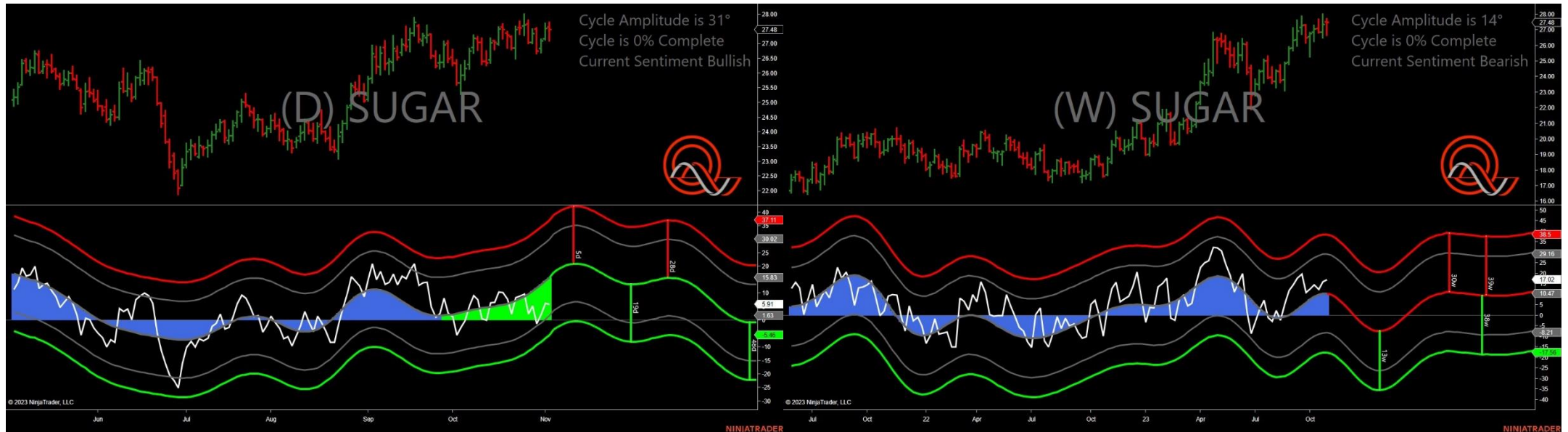
- Amplitude is 14° - Weak
- Direction Accuracy is 77.4%
- Market is at Support Extreme - Expect market consolidation Between \$930.6 and \$919.9

Unleaded Gas - Analysis Chart



- Amplitude is 33° - Good
- Direction Accuracy is 66.5%
- Market is at Support Extreme - Expect market consolidation Between \$2.1943 and \$2.1836

Sugar - Analysis Chart



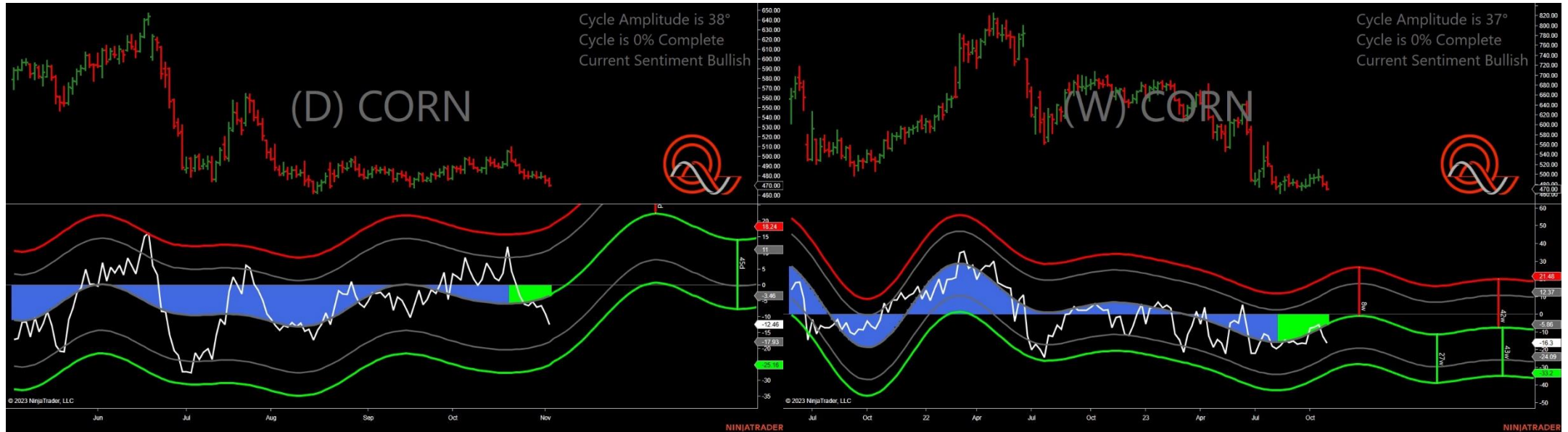
- Amplitude is 31° - Good
- Direction Accuracy is 84.2%
- Market is at Support Extreme - Expect market consolidation Between \$27.48 and \$27.1

Silver - Analysis Chart



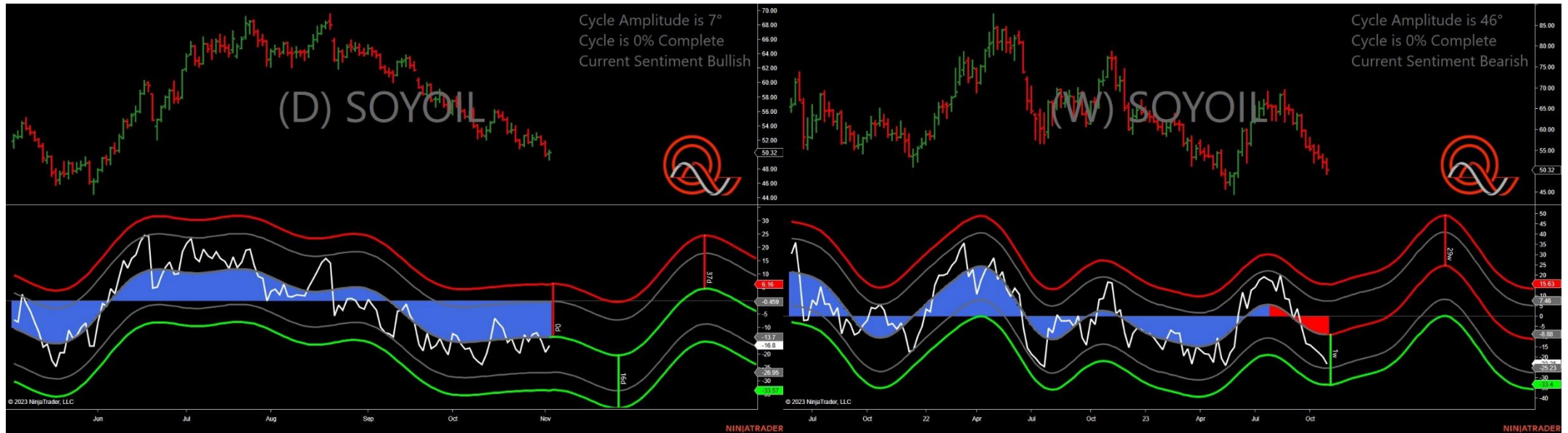
- Amplitude is 7° - Weak
- Direction Accuracy is 25.7%
- Market is at Resistance Extreme - Expect market consolidation Between \$23.24 and \$23.05

Corn - Analysis Chart



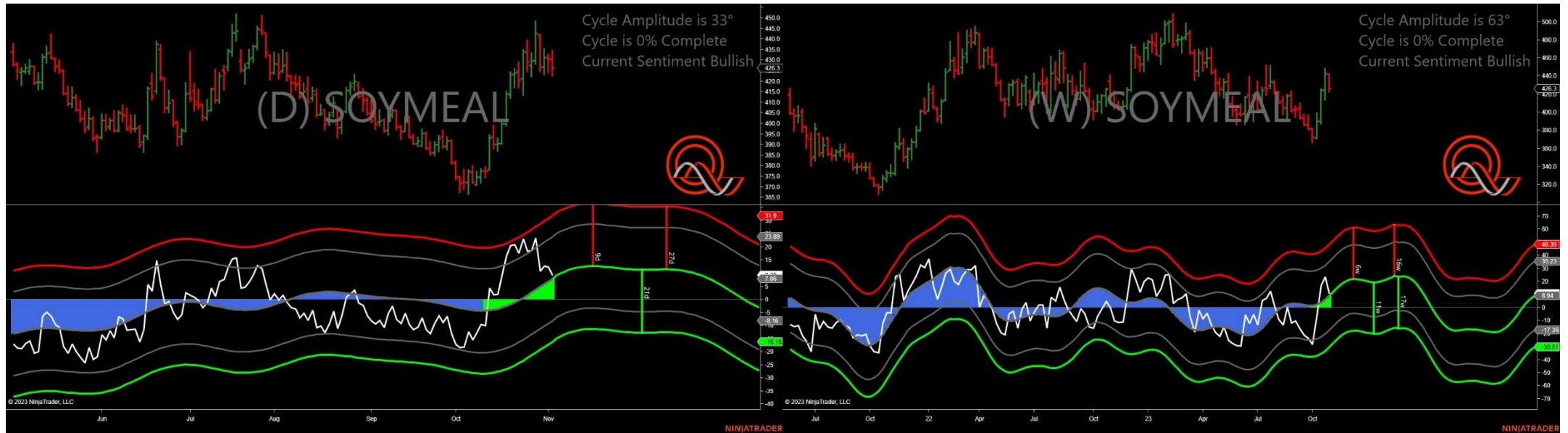
- Amplitude is 38° - Good
- Direction Accuracy is 84%
- Market is at Support Extreme - Expect market consolidation Between \$470 and \$469.5

Soybean Oil - Analysis Chart



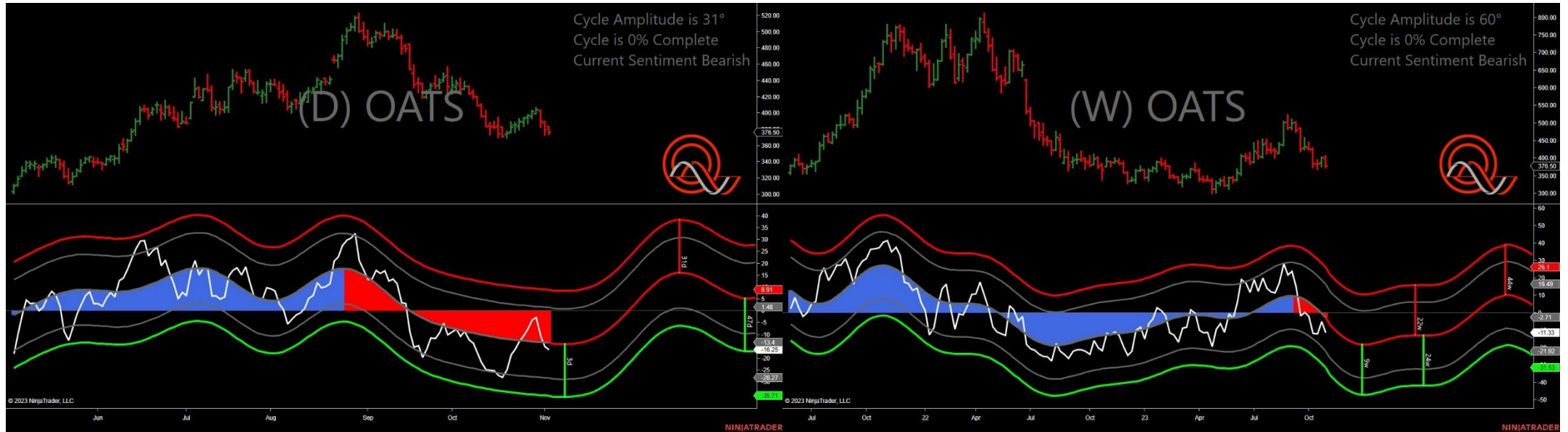
- Amplitude is 7° - Weak
- Direction Accuracy is 41.3%
- Market is at Support Extreme - Expect market consolidation Between \$50.11 and \$49.32

Soybean Meal - Analysis Chart



- Amplitude is 33° - Good
- Direction Accuracy is 86.3%
- Market is at Support Extreme - Expect market consolidation Between \$426.3 and \$422.5

Oats - Analysis Chart



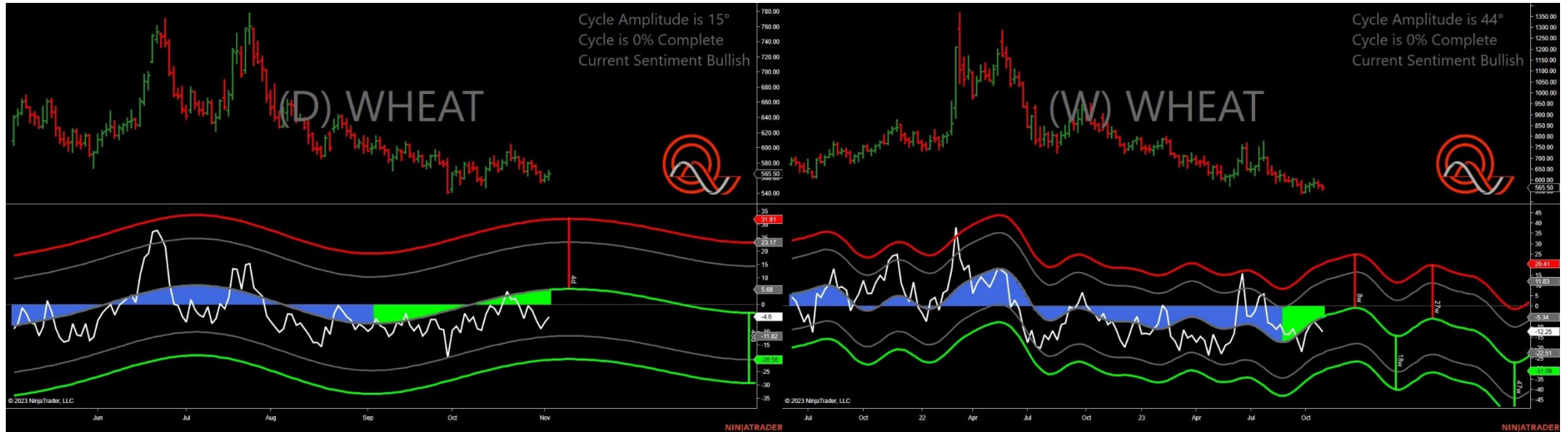
- Amplitude is 31° - Good
- Direction Accuracy is 93%
- Market is at Resistance Extreme - Expect market consolidation Between \$383.5 and \$383.5

Soybeans - Analysis Chart



- Amplitude is 42° - Strong
- Direction Accuracy is 81.8%
- Market is at Support Extreme - Expect market consolidation Between \$1315.25 and \$1315

Wheat - Analysis Chart



- Amplitude is 15° - Weak
- Direction Accuracy is 82.1%
- Market is at Support Extreme - Expect market consolidation Between \$562.25 and \$557.25