



QUANTCYCLES

COMMODITIES

OPPORTUNITIES & EXTREMES

About This Document

- This document contains two cyclical market patterns based on the QuantCycles Cycle Analysis Software
- **Cycle Continuation Opportunity** – These are defined as a deviation of the forecast direction that extend to the upper or lower extremes. There is a high probability that the market will return to the forecast direction within a projected time frame. A Dual Opportunity has a higher probability of returning to the forecast direction than a Single Opportunity.
 - Always look for market commonality. For example, if you're looking at a DOW30 stock to buy, does the index look positive as well?
 - As the market approaches the cycle forecast turning point, the probability of the market following that direction decays. This is indicated by the "Cycle Percent Complete" note at the top of the chart, as well as predicted duration dates
 - At an Opportunity, a strong market may continue to go against the forecast trend, therefore, we recommend waiting for confirmation of the turning point before acting on it.
 - If the Market has not returned to the direction of the cycle by the minimum expected cycle duration date, consider the cycle incorrect.
- **Cycle Extreme** – These are defined as a deviation of the forecast direction, but with a lessor probability of return to the forecast direction. A Dual Extreme is a stronger Support / Resistance than a Single Extreme.
 - The Cycle Continuation Opportunity information above applies here as well, but can be utilized more to take profits than to consider for entry
 - Indicates that a market is at or near a Cycle Support or Resistance.
 - There is a high probability of a market stall.

Analysis Overview

- 1 Dual Extremes
- 4 Single Extremes
- 18 Analysis

Cycle Extremes

1 Dual Extremes

4 Single Extremes

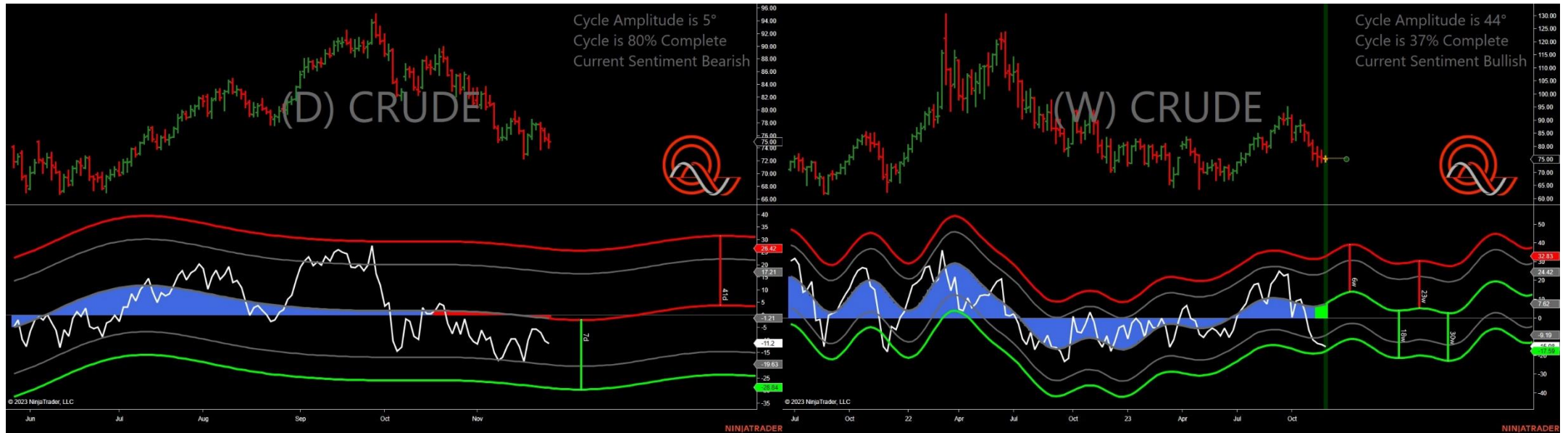
- HE - Live Hogs
- CL - Crude Oil
- GF - Feeder Cattle
- LE - Live Cattle
- ZS - Soybeans

Live Hogs - Dual Extreme



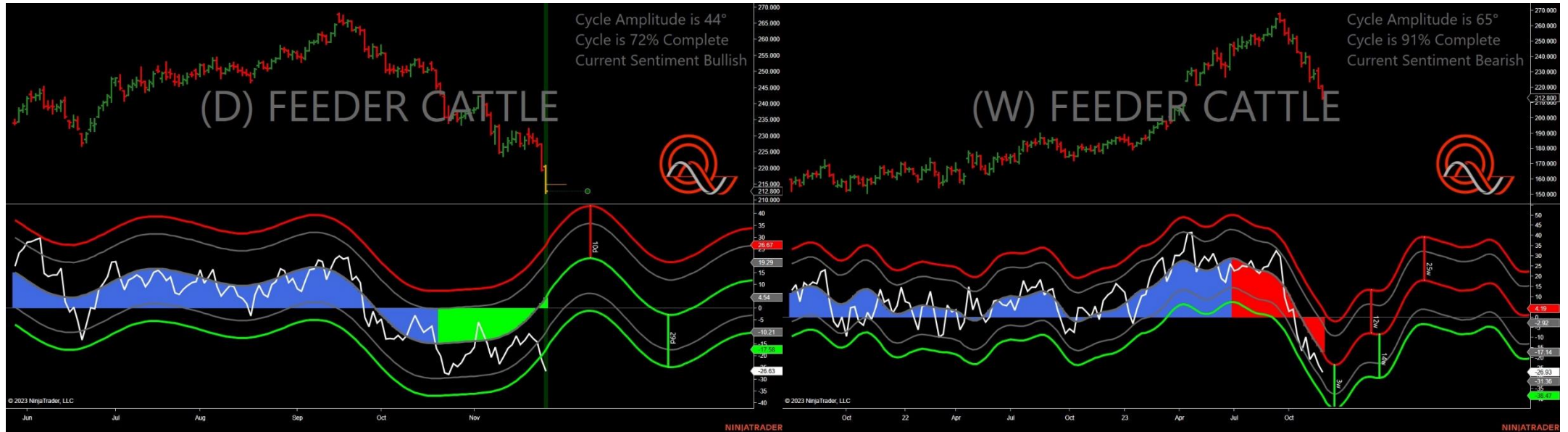
- Amplitude is 39° - Good
- Direction Accuracy is 50%
- Market is at Support Extreme - Expect market consolidation Between \$66.925 and \$66.825

Crude Oil - Single Weekly Extreme



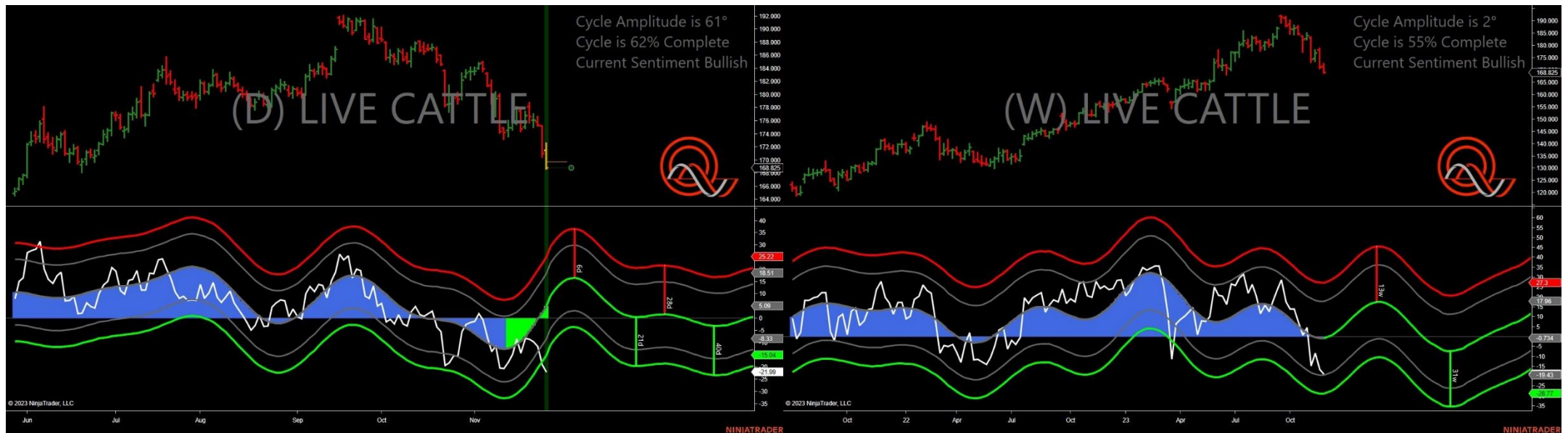
- Amplitude is 5° - Weak
- Direction Accuracy is 0%
- Market is at Resistance Extreme - Expect market consolidation Between \$76.23 and \$75.31

Feeder Cattle - Single Daily Extreme



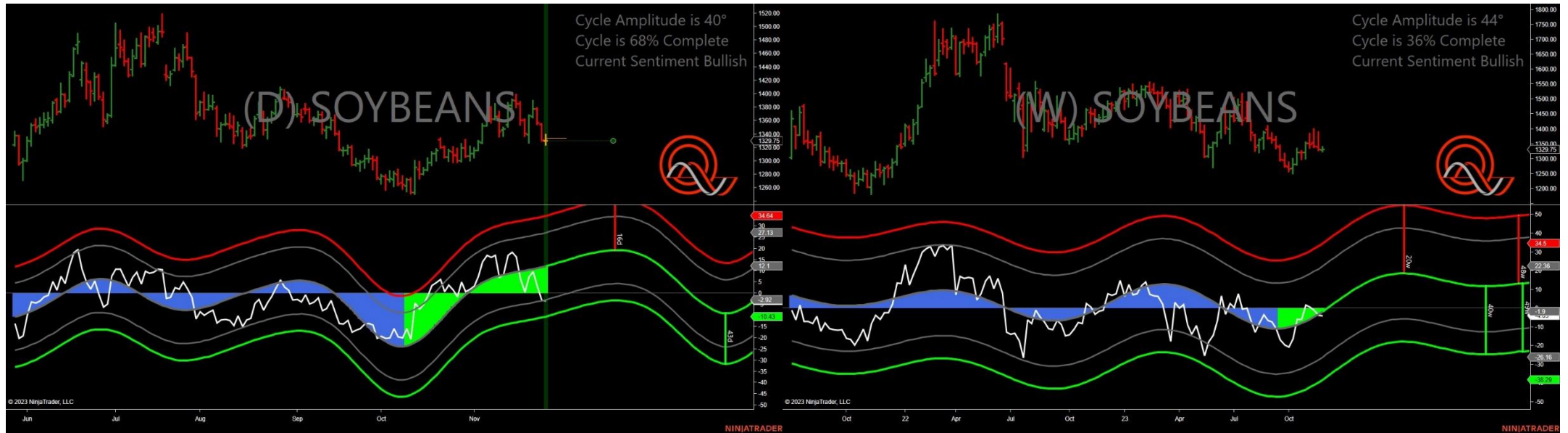
- Amplitude is 44° - Strong
- Direction Accuracy is 50%
- Market is at Support Extreme - Expect market consolidation Between \$212.8 and \$212.125

Live Cattle - Single Daily Extreme



- Amplitude is 61° - Strong
- Direction Accuracy is 50%
- Market is at Support Extreme - Expect market consolidation Between \$168.825 and \$168.625

Soybeans - Single Daily Extreme



- Amplitude is 40° - Good
- Direction Accuracy is 50%
- Market is at Support Extreme - Expect market consolidation Between \$1329.5 and \$1323.5

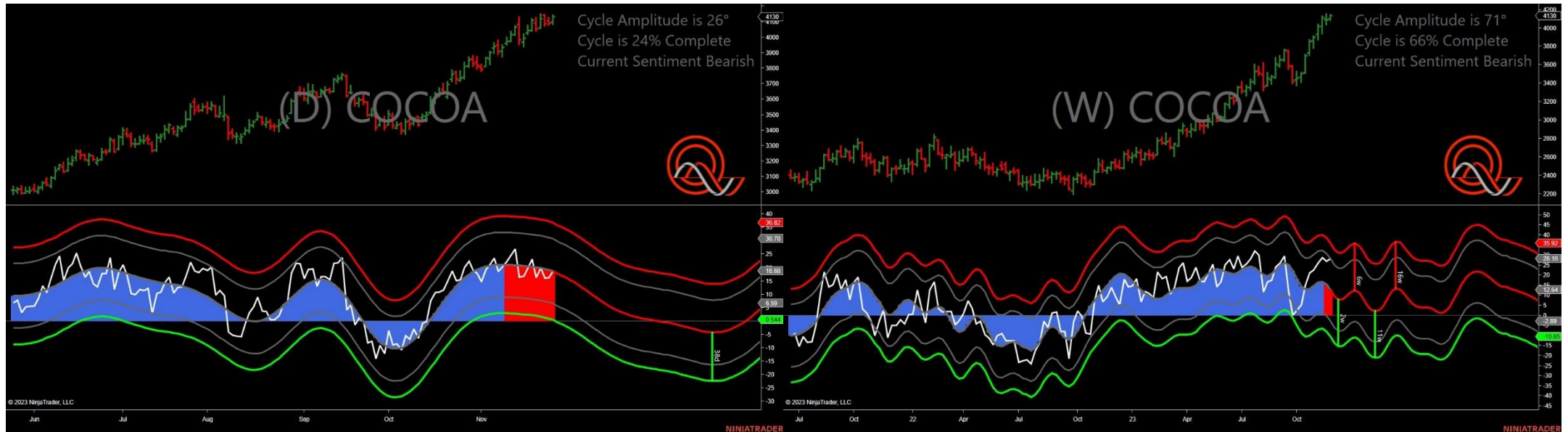
Analysis Charts

18 Charts

- CC - Cocoa
- CT - Cotton
- GC - Gold
- HG - Copper
- HO - Heating Oil
- KC - Coffee
- NG - Natural Gas
- OJ - Oranje Juice
- PA - Palladium
- PL - Platinum
- RB - Unleaded Gas
- SB - Sugar
- SI - Silver
- ZC - Corn
- ZL - Soybean Oil
- ZM - Soybean Meal
- ZO - Oats

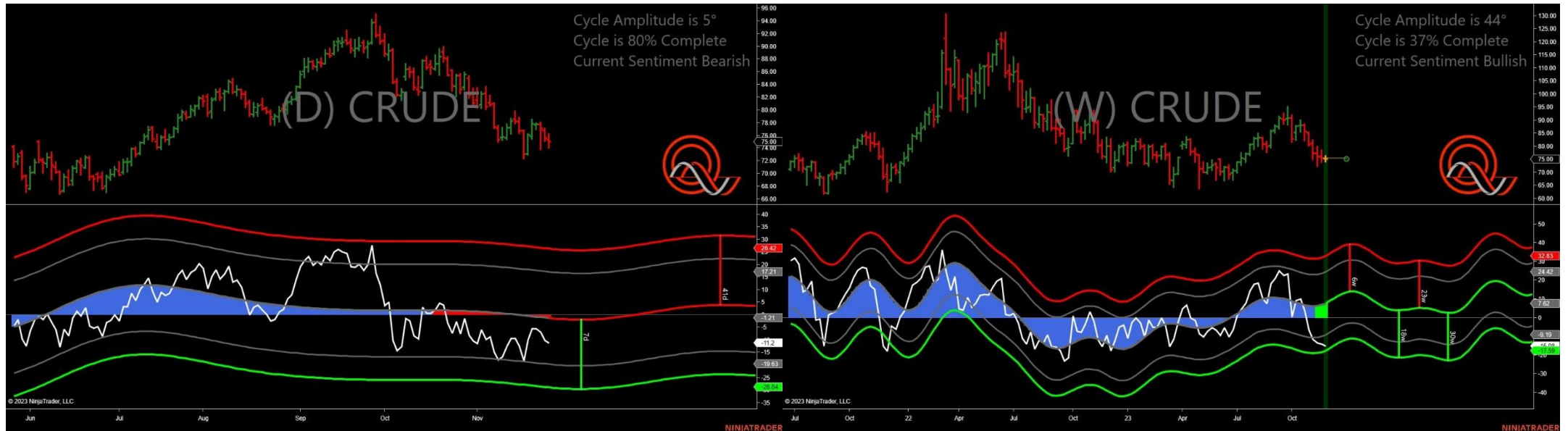
- ZW - Wheat

Cocoa - Analysis Chart



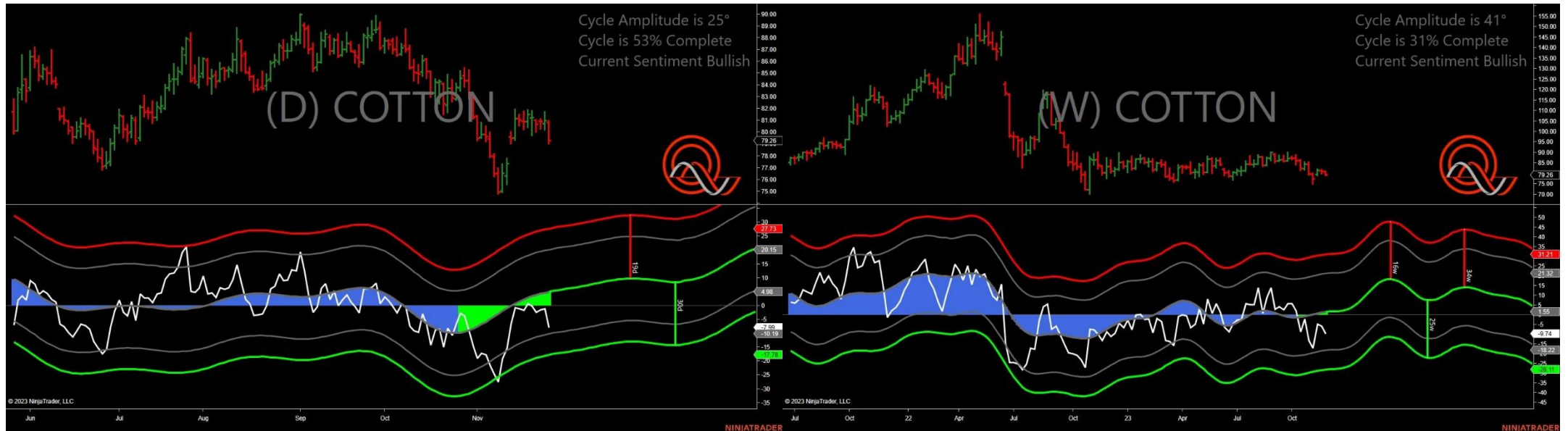
- Amplitude is 26° - Good
- Direction Accuracy is 0%
- Market is at Resistance Extreme - Expect market consolidation Between \$4143 and \$4130

Crude Oil - Analysis Chart



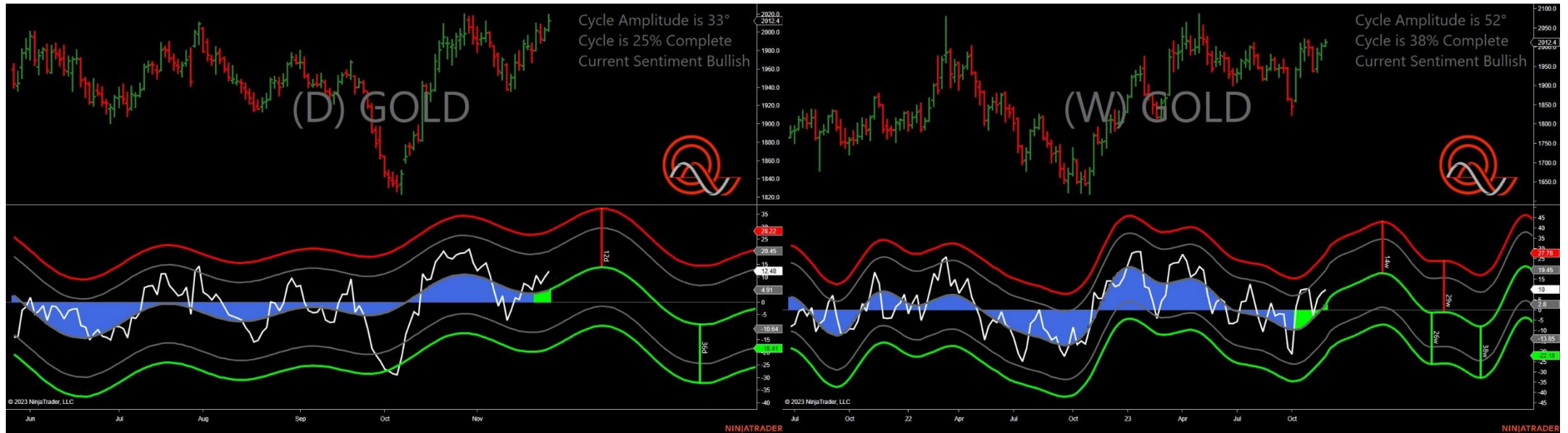
- Amplitude is 5° - Weak
- Direction Accuracy is 0%
- Market is at Resistance Extreme - Expect market consolidation Between \$76.23 and \$75.31

Cotton - Analysis Chart



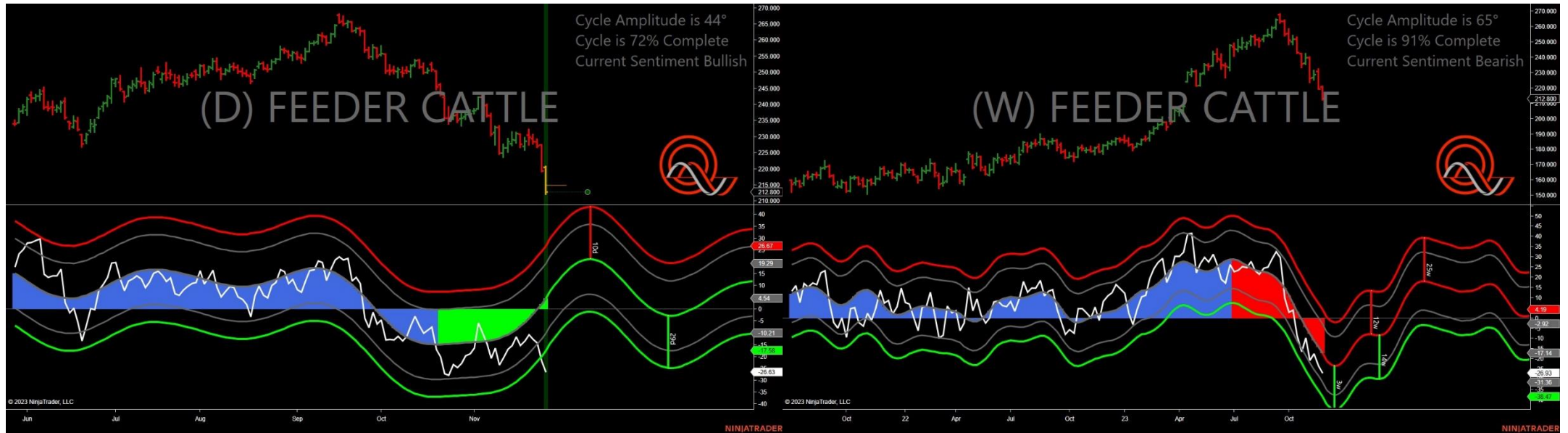
- Amplitude is 25° - Good
- Direction Accuracy is 50%
- Market is at Support Extreme - Expect market consolidation Between \$79.26 and \$79.01

Gold - Analysis Chart



- Amplitude is 33° - Good
- Direction Accuracy is 50%
- Market is at Support Extreme - Expect market consolidation Between \$2002.5 and \$2001.4

Feeder Cattle - Analysis Chart



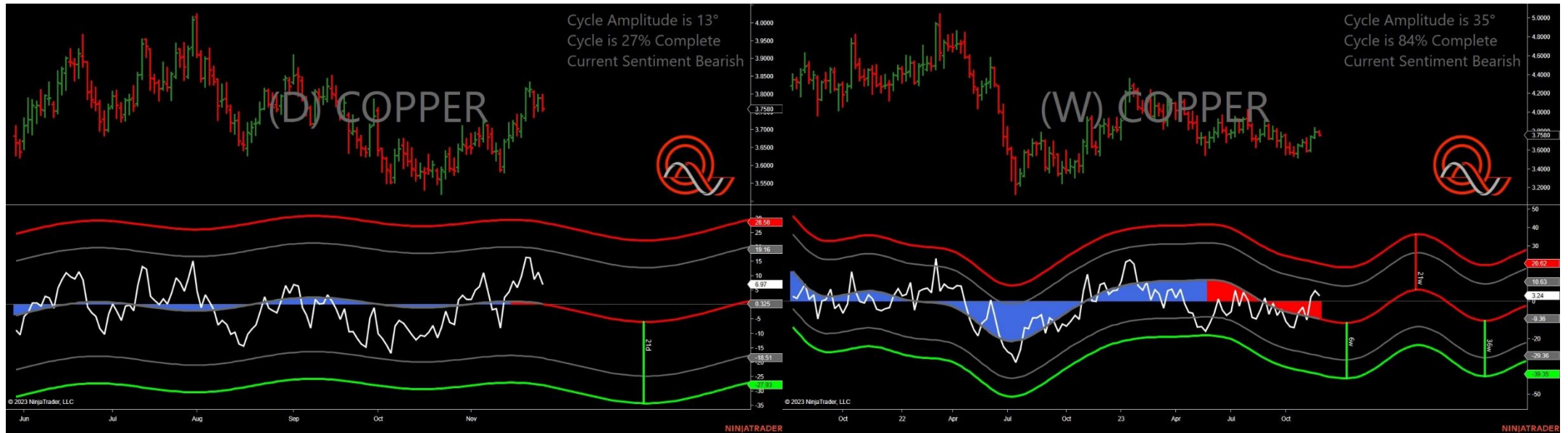
- Amplitude is 44° - Strong
- Direction Accuracy is 50%
- Market is at Support Extreme - Expect market consolidation Between \$212.8 and \$212.125

Live Hogs - Analysis Chart



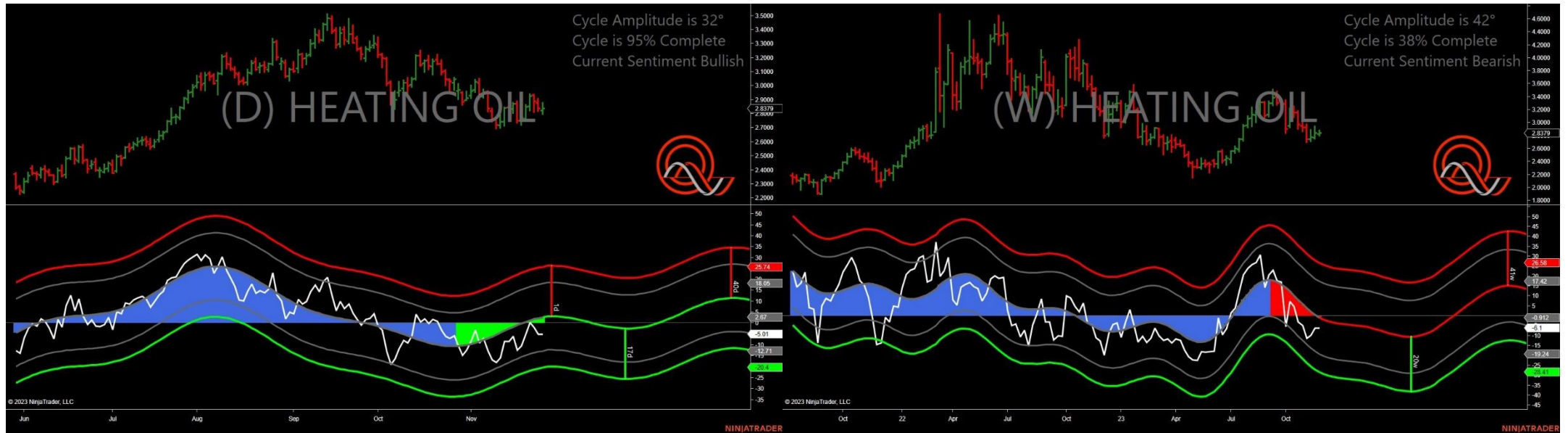
- Amplitude is 39° - Good
- Direction Accuracy is 50%
- Market is at Support Extreme - Expect market consolidation Between \$66.925 and \$66.825

Copper - Analysis Chart



- Amplitude is 13° - Weak
- Direction Accuracy is 0%
- Market is at Resistance Extreme - Expect market consolidation Between \$3.7985 and \$3.788

Heating Oil - Analysis Chart



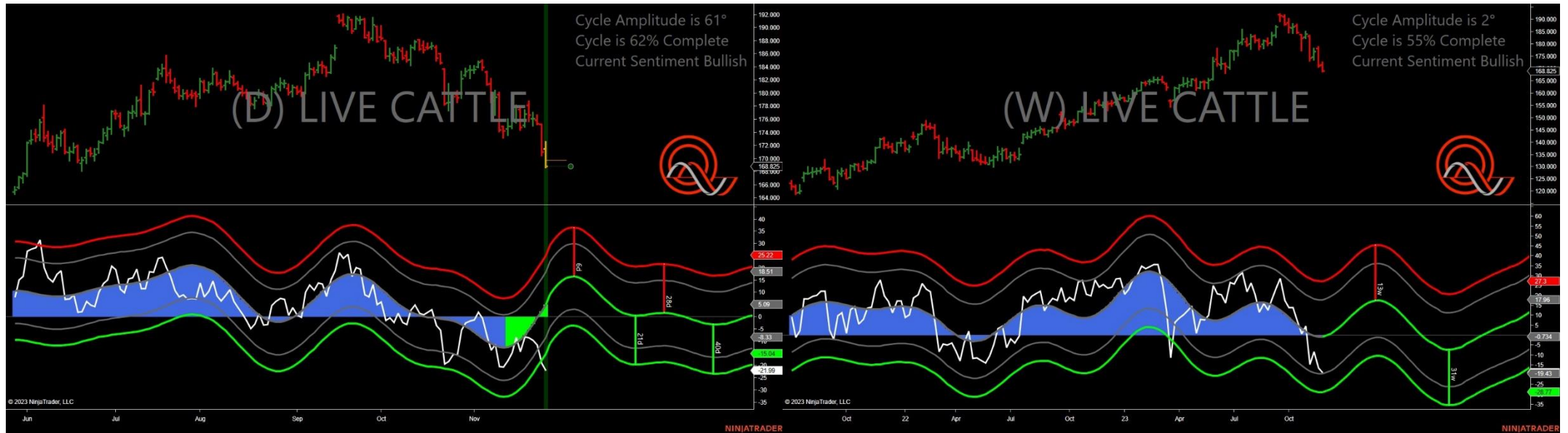
- Amplitude is 32° - Good
- Direction Accuracy is 50%
- Market is at Support Extreme - Expect market consolidation Between \$2.823 and \$2.7973

Coffee - Analysis Chart



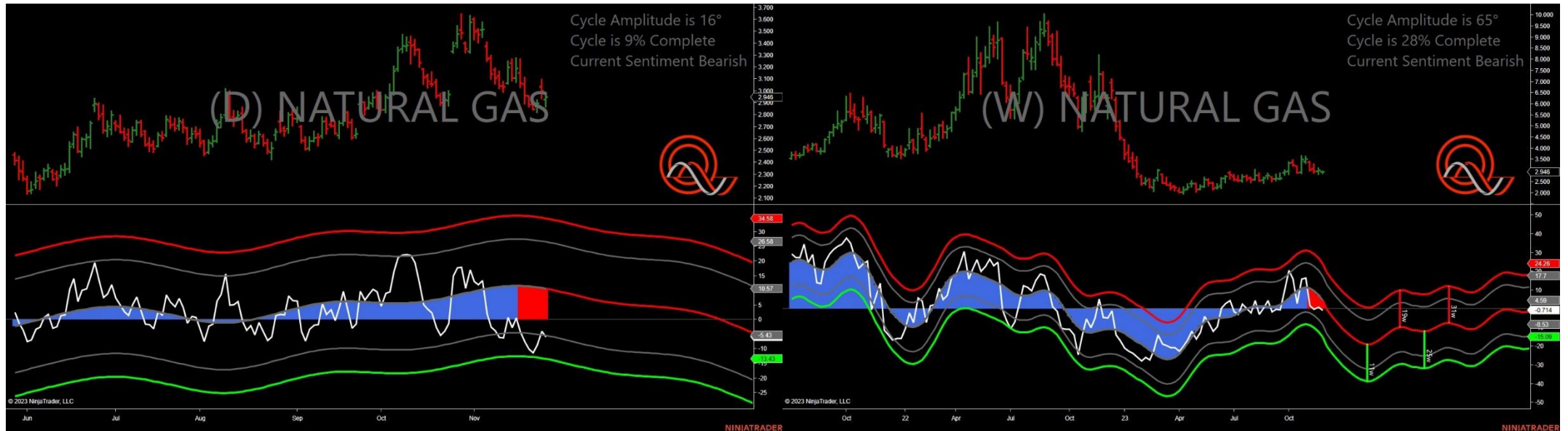
- Amplitude is 3° - Weak
- Direction Accuracy is 0%
- Market is at Resistance Extreme - Expect market consolidation Between \$172.5 and \$169.05

Live Cattle - Analysis Chart



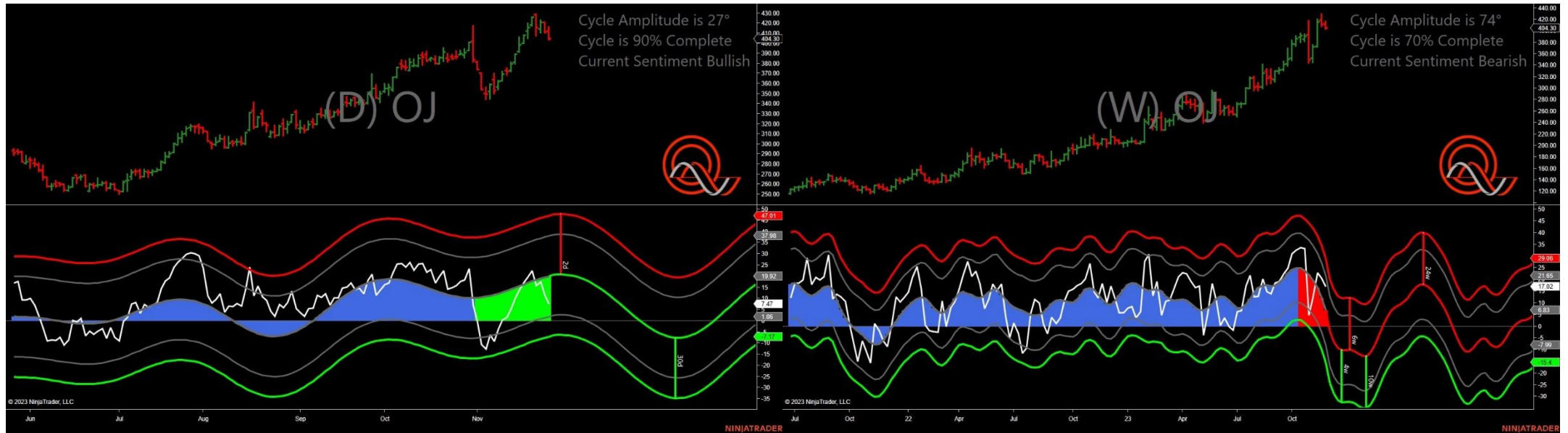
- Amplitude is 61° - Strong
- Direction Accuracy is 50%
- Market is at Support Extreme - Expect market consolidation Between \$168.825 and \$168.625

Natural Gas - Analysis Chart



- Amplitude is 16° - Weak
- Direction Accuracy is 0%
- Market is at Resistance Extreme - Expect market consolidation Between \$2.956 and \$2.946

Oranje Juice - Analysis Chart



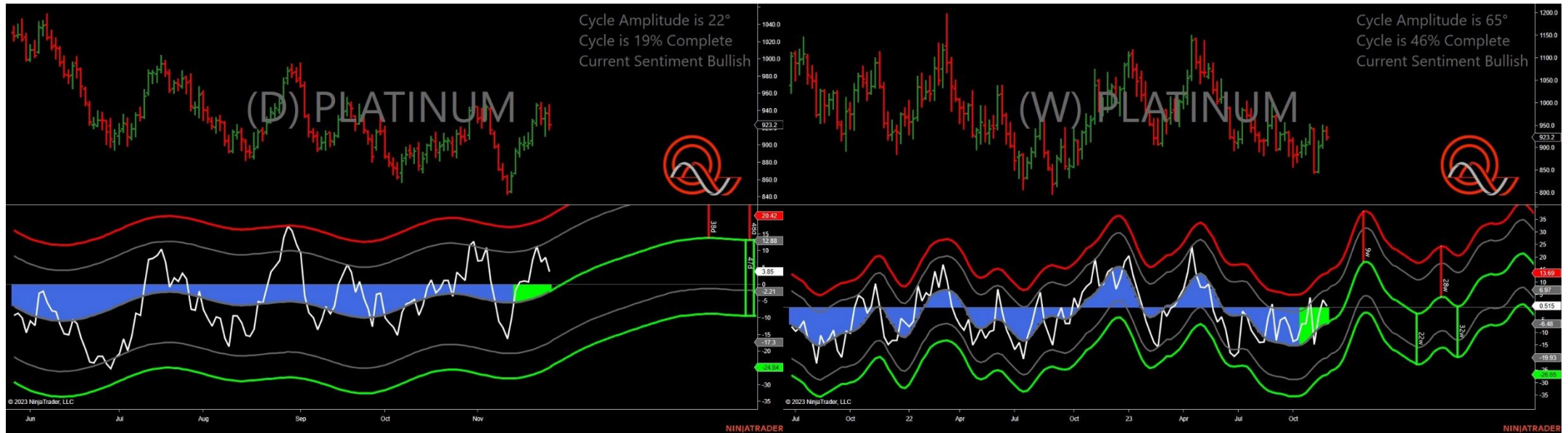
- Amplitude is 27° - Good
- Direction Accuracy is 50%
- Market is at Support Extreme - Expect market consolidation Between \$404.3 and \$403.3

Palladium - Analysis Chart



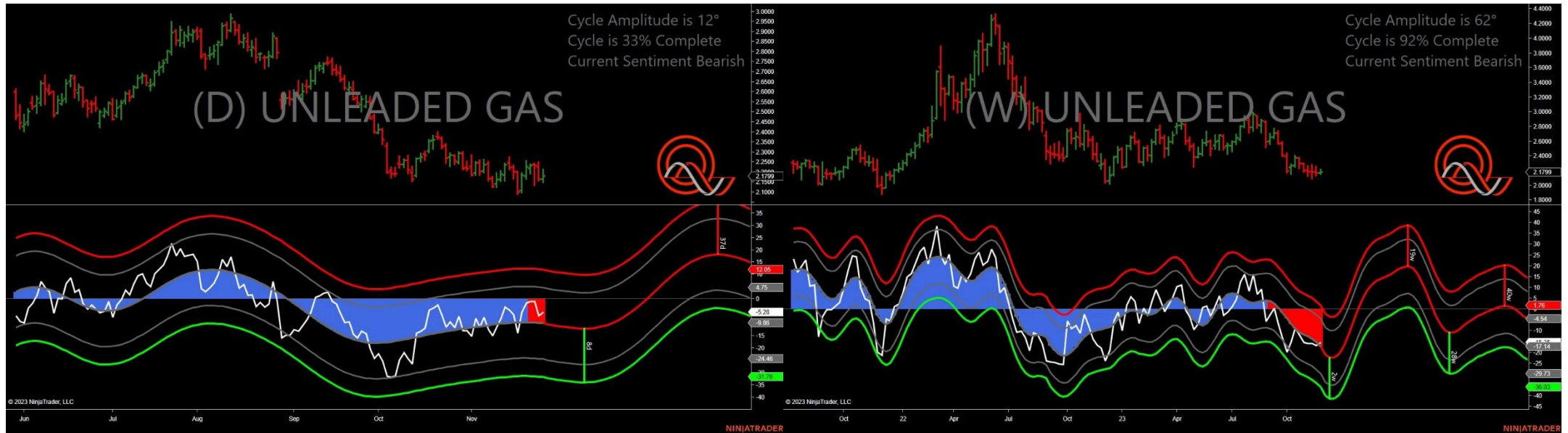
- Amplitude is 49° - Strong
- Direction Accuracy is 50%
- Market is at Support Extreme - Expect market consolidation Between \$1060.5 and \$1053

Platinum - Analysis Chart



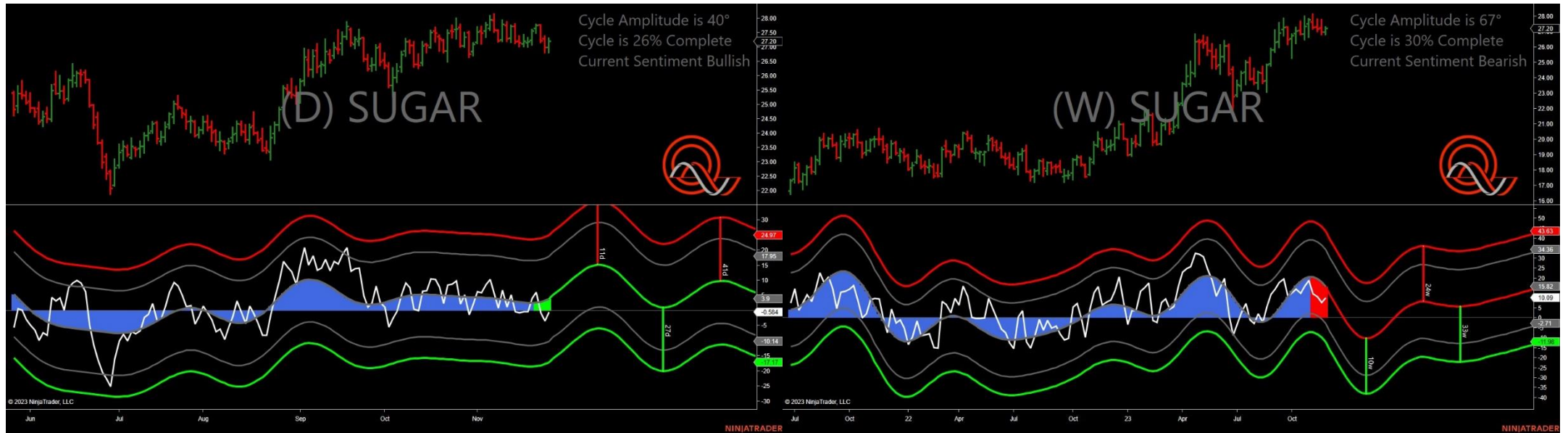
- Amplitude is 22° - Good
- Direction Accuracy is 50%
- Market is at Support Extreme - Expect market consolidation Between \$923.2 and \$918.2

Unleaded Gas - Analysis Chart



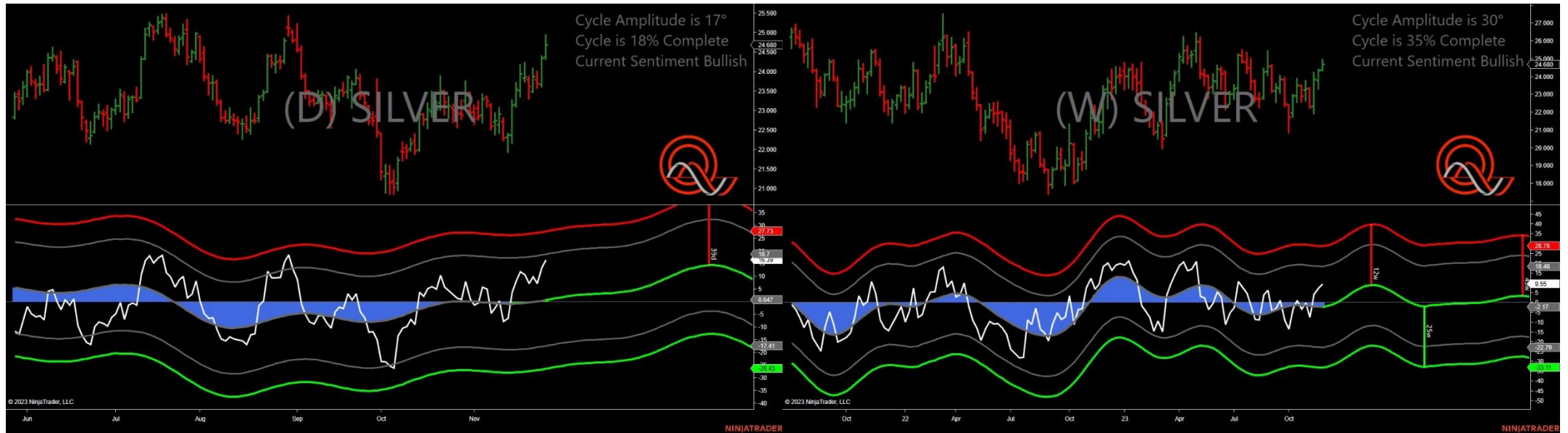
- Amplitude is 12° - Weak
- Direction Accuracy is 0%
- Market is at Resistance Extreme - Expect market consolidation Between \$2.2132 and \$2.1799

Sugar - Analysis Chart



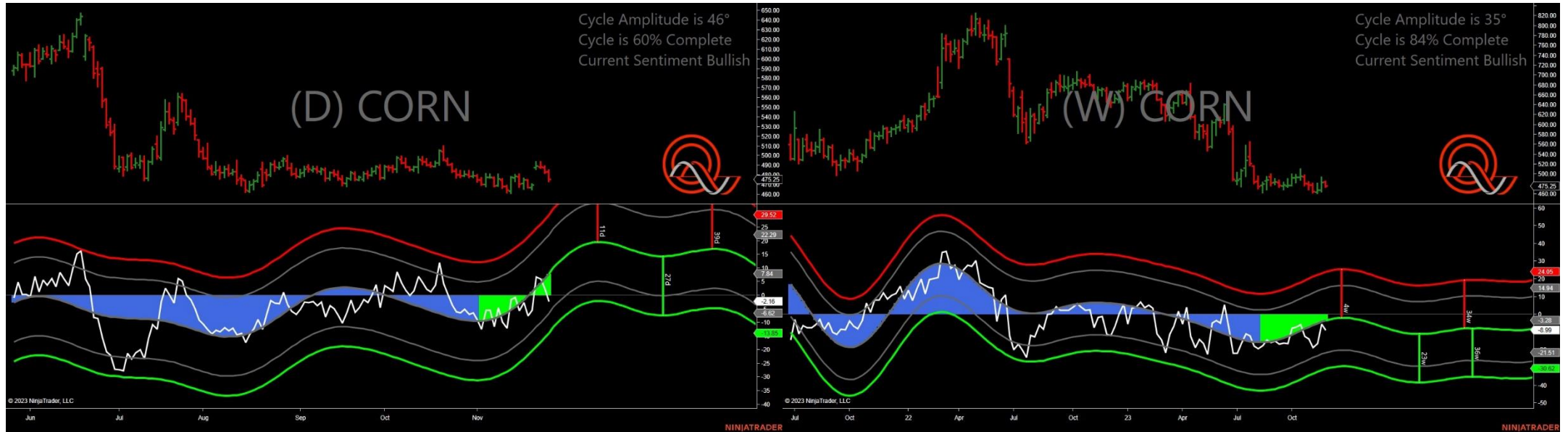
- Amplitude is 40° - Good
- Direction Accuracy is 50%
- Market is at Support Extreme - Expect market consolidation Between \$26.98 and \$26.8

Silver - Analysis Chart



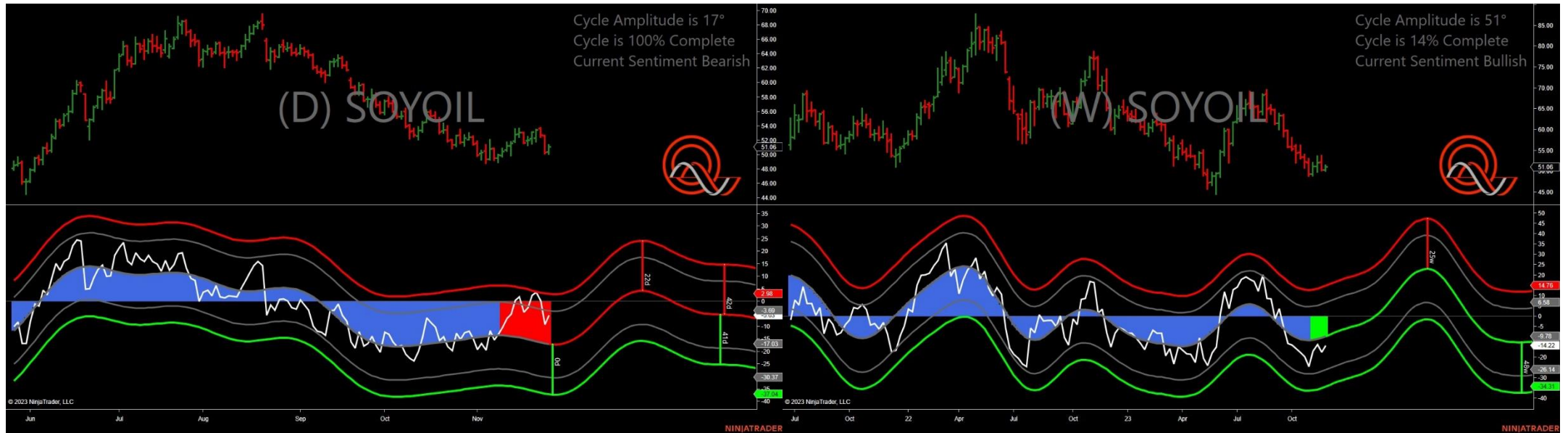
- Amplitude is 17° - Weak
- Direction Accuracy is 50%
- Market is at Support Extreme - Expect market consolidation Between \$24.375 and \$24.32

Corn - Analysis Chart



- Amplitude is 46° - Strong
- Direction Accuracy is 50%
- Market is at Support Extreme - Expect market consolidation Between \$475.25 and \$473

Soybean Oil - Analysis Chart



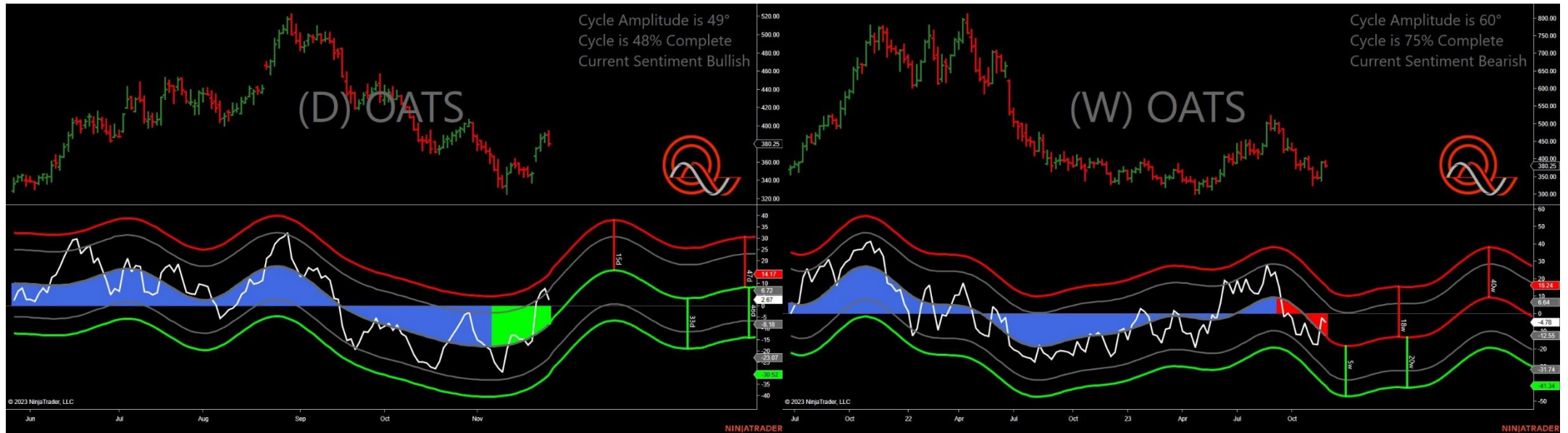
- Amplitude is 17° - Weak
- Direction Accuracy is 0%
- Market is at Resistance Extreme - Expect market consolidation Between \$51.37 and \$51.06

Soybean Meal - Analysis Chart



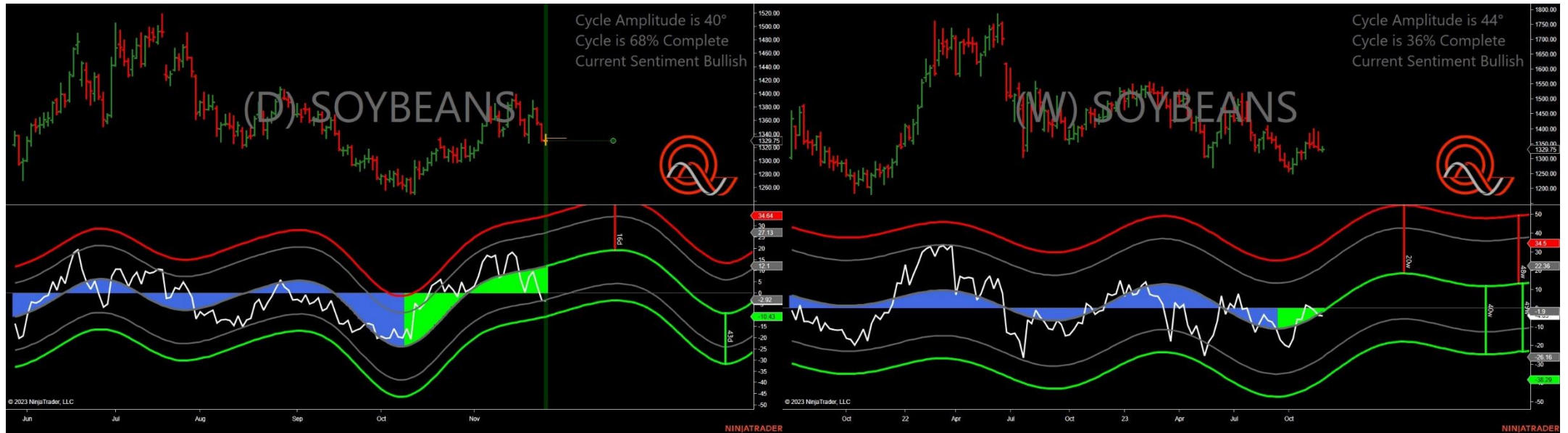
- Amplitude is 22° - Good
- Direction Accuracy is 0%
- Market is at Resistance Extreme - Expect market consolidation Between \$440.2 and \$436.6

Oats - Analysis Chart



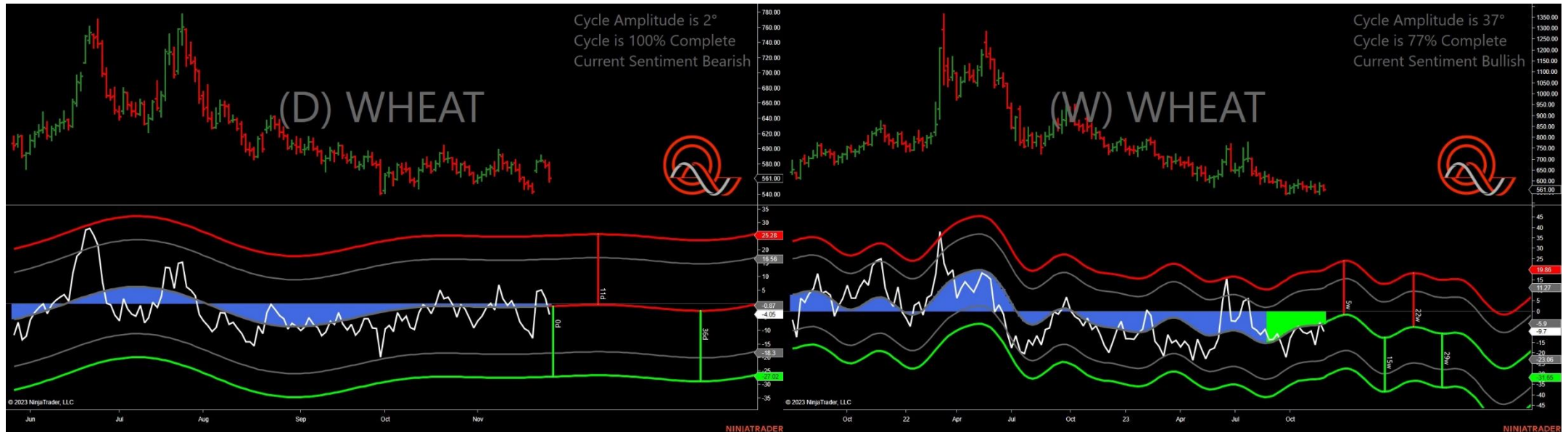
- Amplitude is 49° - Strong
- Direction Accuracy is 50%
- Market is at Support Extreme - Expect market consolidation Between \$380.25 and \$377.75

Soybeans - Analysis Chart



- Amplitude is 40° - Good
- Direction Accuracy is 50%
- Market is at Support Extreme - Expect market consolidation Between \$1329.5 and \$1323.5

Wheat - Analysis Chart



- Amplitude is 2° - Weak
- Direction Accuracy is 0%
- Market is at Resistance Extreme - Expect market consolidation Between \$582 and \$578.5