



QUANTCYCLES

COMMODITIES

OPPORTUNITIES & EXTREMES

About This Document

- This document contains two cyclical market patterns based on the QuantCycles Cycle Analysis Software
- **Cycle Continuation Opportunity** – These are defined as a deviation of the forecast direction that extend to the upper or lower extremes. There is a high probability that the market will return to the forecast direction within a projected time frame. A Dual Opportunity has a higher probability of returning to the forecast direction than a Single Opportunity.
 - Always look for market commonality. For example, if you're looking at a DOW30 stock to buy, does the index look positive as well?
 - As the market approaches the cycle forecast turning point, the probability of the market following that direction decays. This is indicated by the "Cycle Percent Complete" note at the top of the chart, as well as predicted duration dates
 - At an Opportunity, a strong market may continue to go against the forecast trend, therefore, we recommend waiting for confirmation of the turning point before acting on it.
 - If the Market has not returned to the direction of the cycle by the minimum expected cycle duration date, consider the cycle incorrect.
- **Cycle Extreme** – These are defined as a deviation of the forecast direction, but with a lessor probability of return to the forecast direction. A Dual Extreme is a stronger Support / Resistance than a Single Extreme.
 - The Cycle Continuation Opportunity information above applies here as well, but can be utilized more to take profits than to consider for entry
 - Indicates that a market is at or near a Cycle Support or Resistance.
 - There is a high probability of a market stall.

Analysis Overview

- 1 Dual Extremes
- 5 Single Extremes
- 16 Analysis

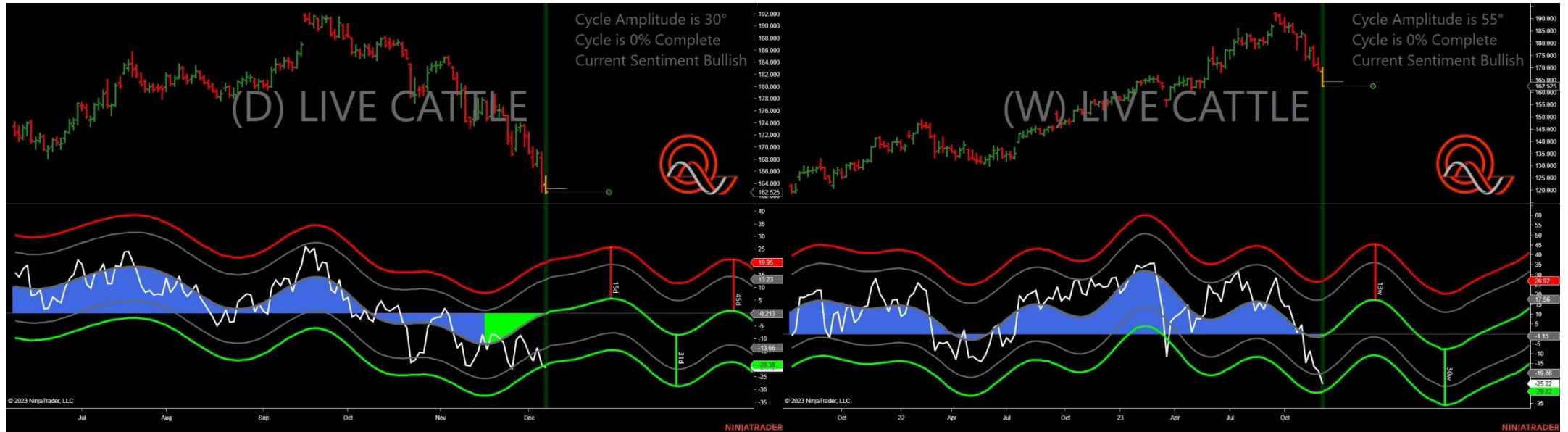
Cycle Extremes

1 Dual Extremes

5 Single Extremes

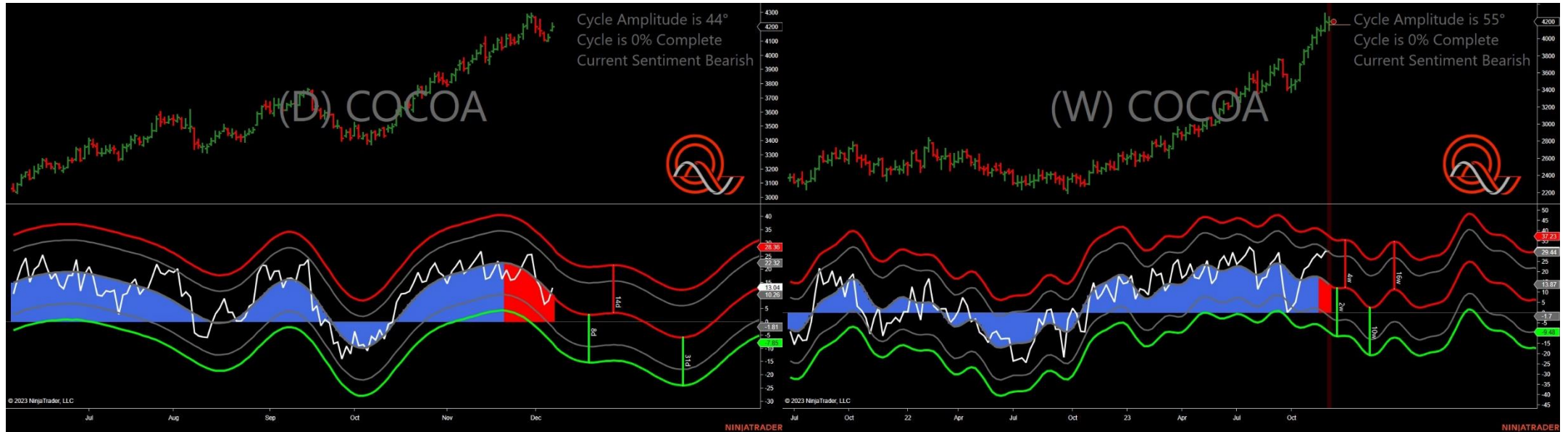
- LE - Live Cattle
- CC - Cocoa
- CL - Crude Oil
- GF - Feeder Cattle
- PA - Palladium
- ZW - Wheat

Live Cattle - Dual Extreme



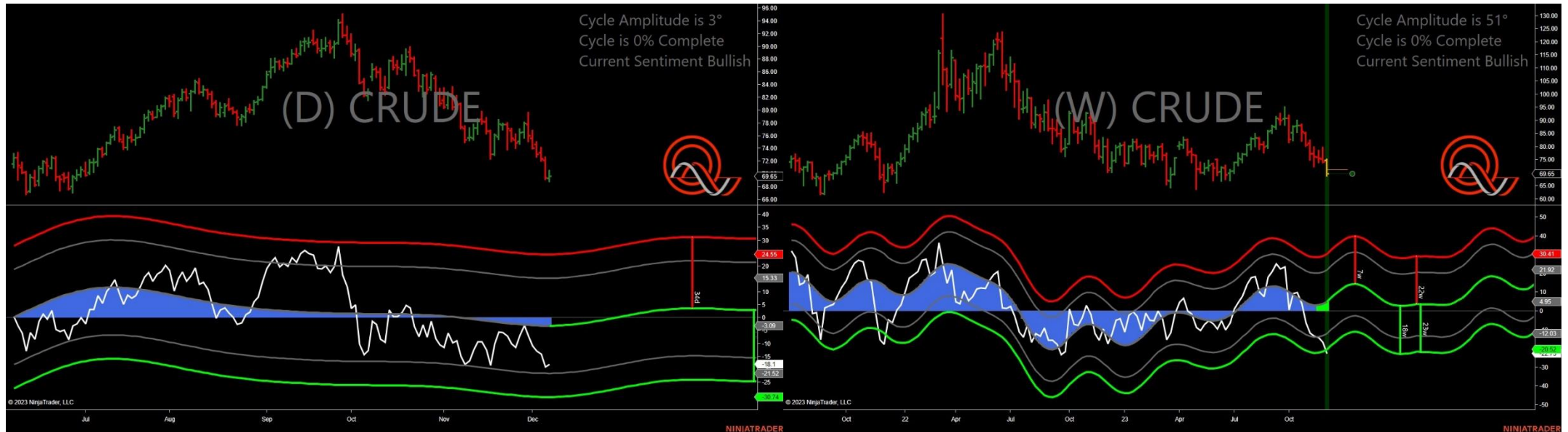
- Amplitude is 30° - Good
- Direction Accuracy is 65.9%
- Market is at Support Extreme - Expect market consolidation Between \$162.525 and \$162.4

Cocoa - Single Weekly Extreme



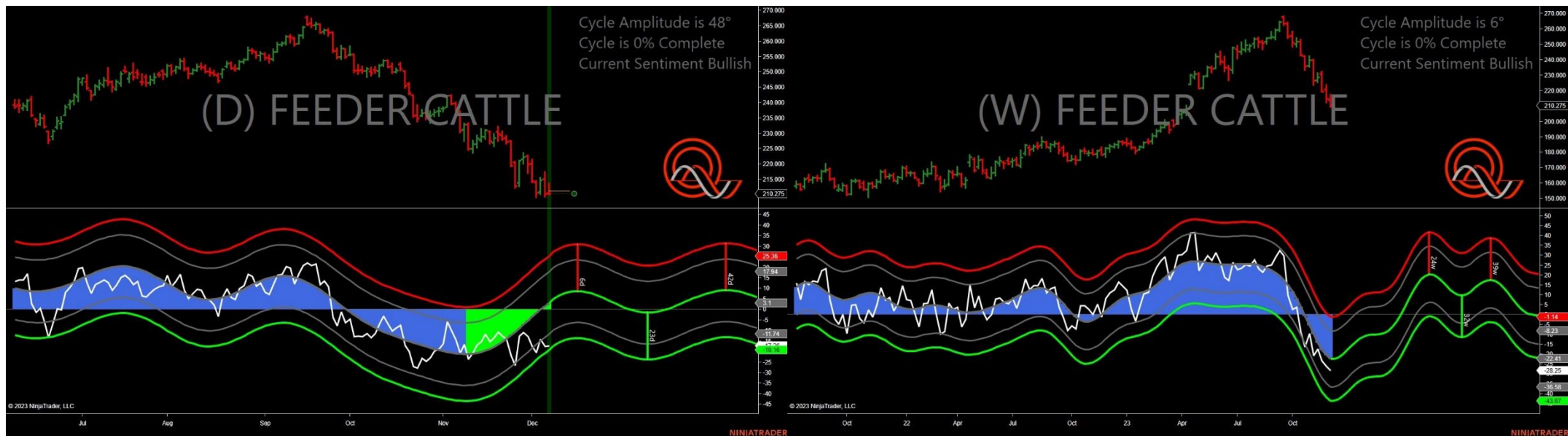
- Amplitude is 44° - Strong
- Direction Accuracy is 87.8%
- Market is at Resistance Extreme - Expect market consolidation Between \$4224 and \$4200

Crude Oil - Single Weekly Extreme



- Amplitude is 3° - Weak
- Direction Accuracy is 41.2%
- Market is at Support Extreme - Expect market consolidation Between \$69.28 and \$68.8

Feeder Cattle - Single Daily Extreme



- Amplitude is 48° - Strong
- Direction Accuracy is 68.2%
- Market is at Support Extreme - Expect market consolidation Between \$210.275 and \$210

Palladium - Single Weekly Extreme



- Amplitude is 34° - Good
- Direction Accuracy is 63.7%
- Market is at Resistance Extreme - Expect market consolidation Between \$999 and \$981

Wheat - Single Daily Extreme



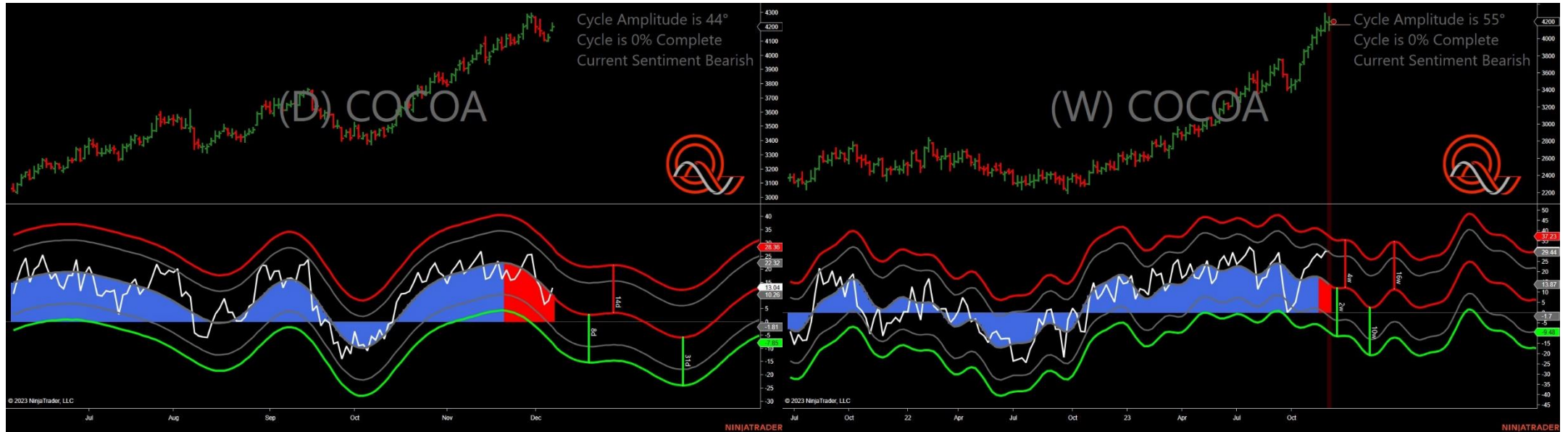
- Amplitude is 2° - Weak
- Direction Accuracy is 74.9%
- Market is at Resistance Extreme - Expect market consolidation Between \$645 and \$642.25

Analysis Charts

16 Charts

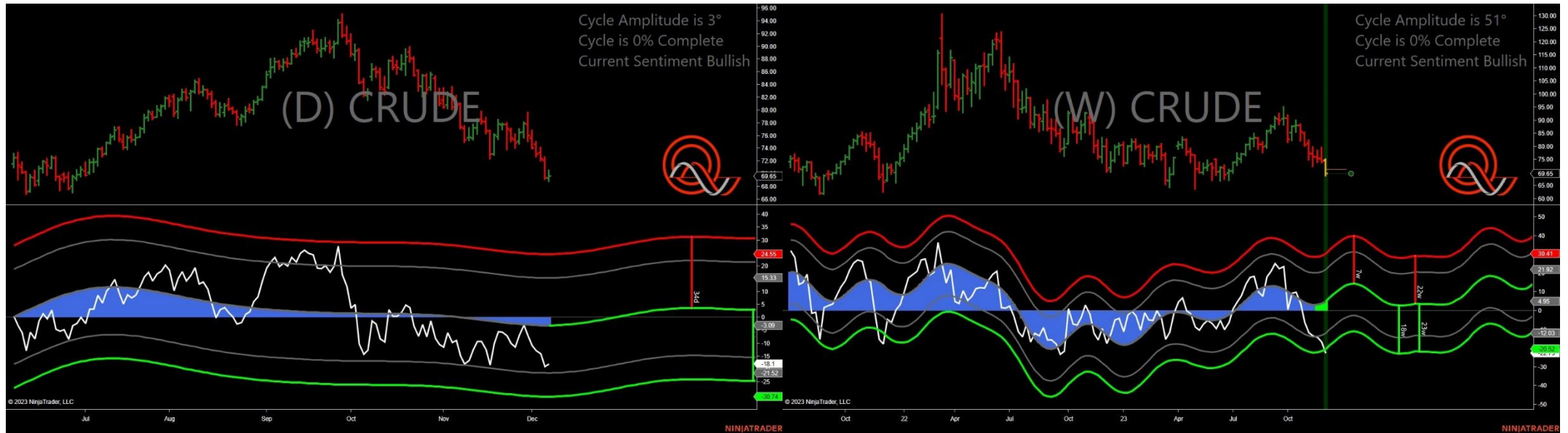
- CT - Cotton
- GC - Gold
- HE - Live Hogs
- HG - Copper
- HO - Heating Oil
- KC - Coffee
- NG - Natural Gas
- OJ - Oranje Juice
- PL - Platinum
- RB - Unleaded Gas
- SI - Silver
- ZC - Corn
- ZL - Soybean Oil
- ZM - Soybean Meal
- ZO - Oats
- ZS - Soybeans

Cocoa - Analysis Chart



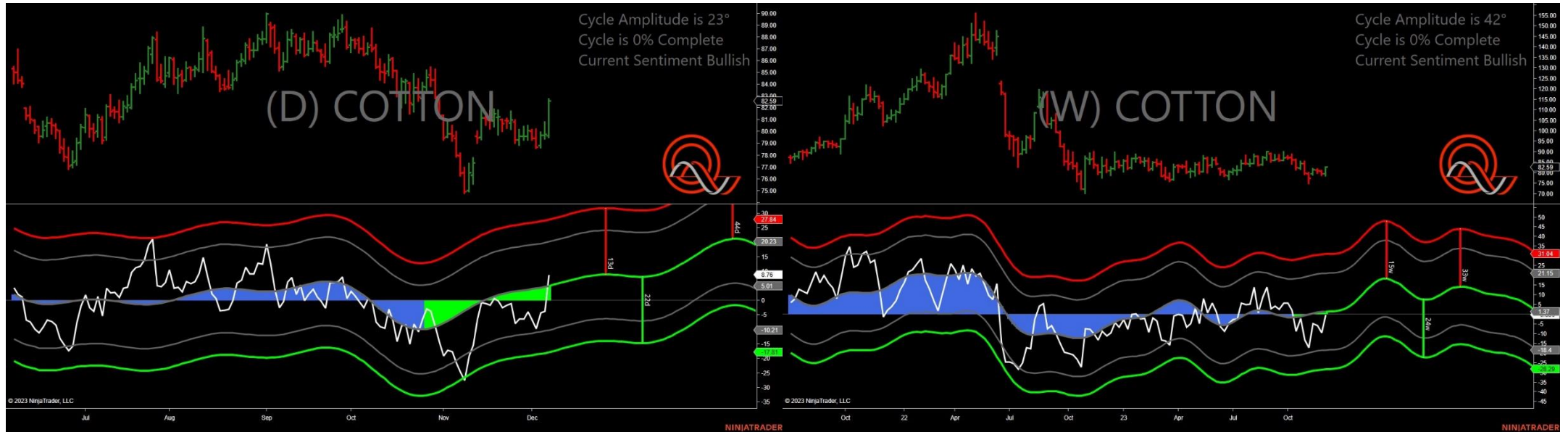
- Amplitude is 44° - Strong
- Direction Accuracy is 87.8%
- Market is at Resistance Extreme - Expect market consolidation Between \$4224 and \$4200

Crude Oil - Analysis Chart



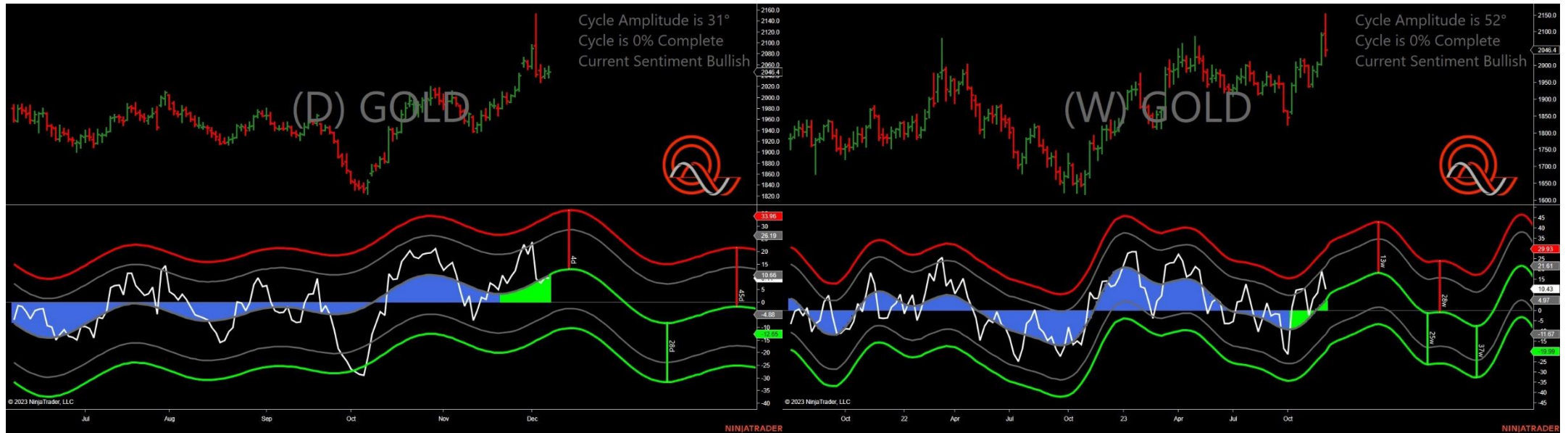
- Amplitude is 3° - Weak
- Direction Accuracy is 41.2%
- Market is at Support Extreme - Expect market consolidation Between \$69.28 and \$68.8

Cotton - Analysis Chart



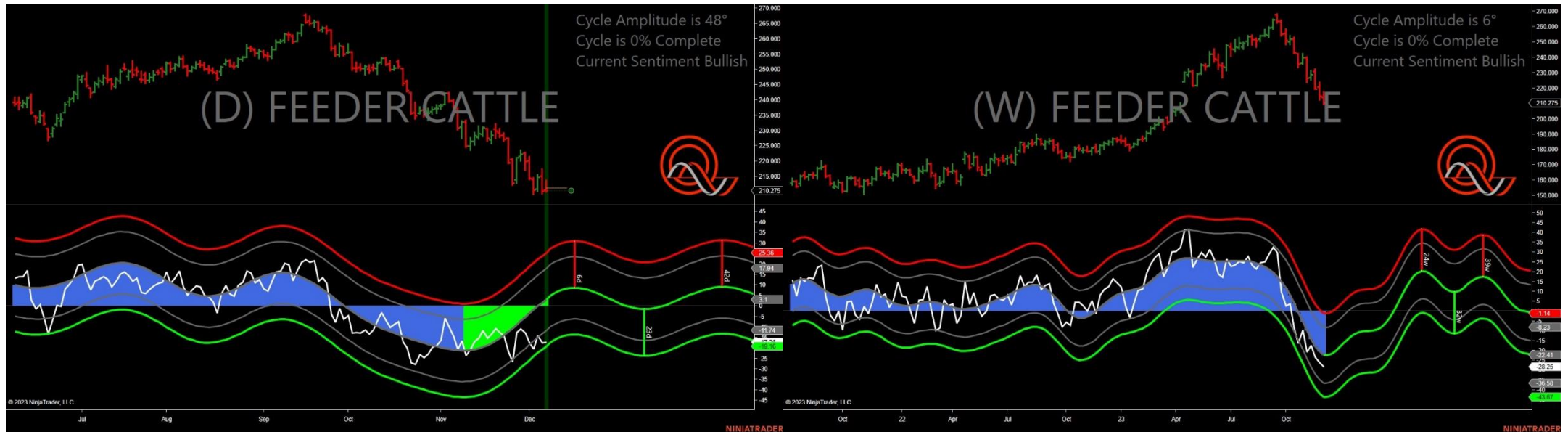
- Amplitude is 23° - Good
- Direction Accuracy is 71.3%
- Market is at Support Extreme - Expect market consolidation Between \$79.61 and \$79.52

Gold - Analysis Chart



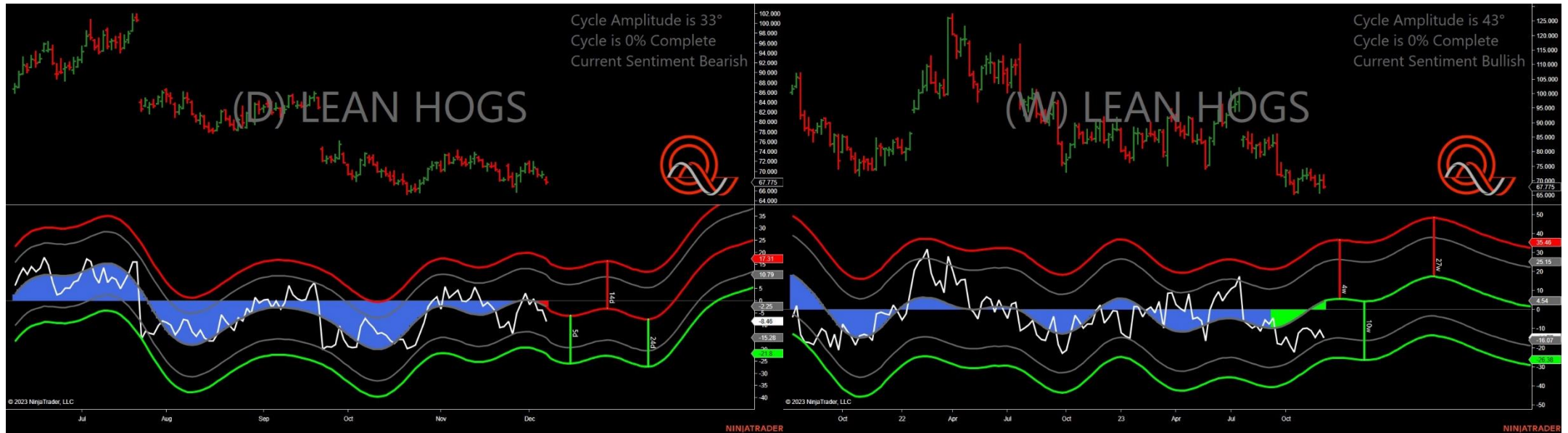
- Amplitude is 31° - Good
- Direction Accuracy is 90.2%
- Market is at Support Extreme - Expect market consolidation Between \$2043.4 and \$2036.6

Feeder Cattle - Analysis Chart



- Amplitude is 48° - Strong
- Direction Accuracy is 68.2%
- Market is at Support Extreme - Expect market consolidation Between \$210.275 and \$210

Live Hogs - Analysis Chart



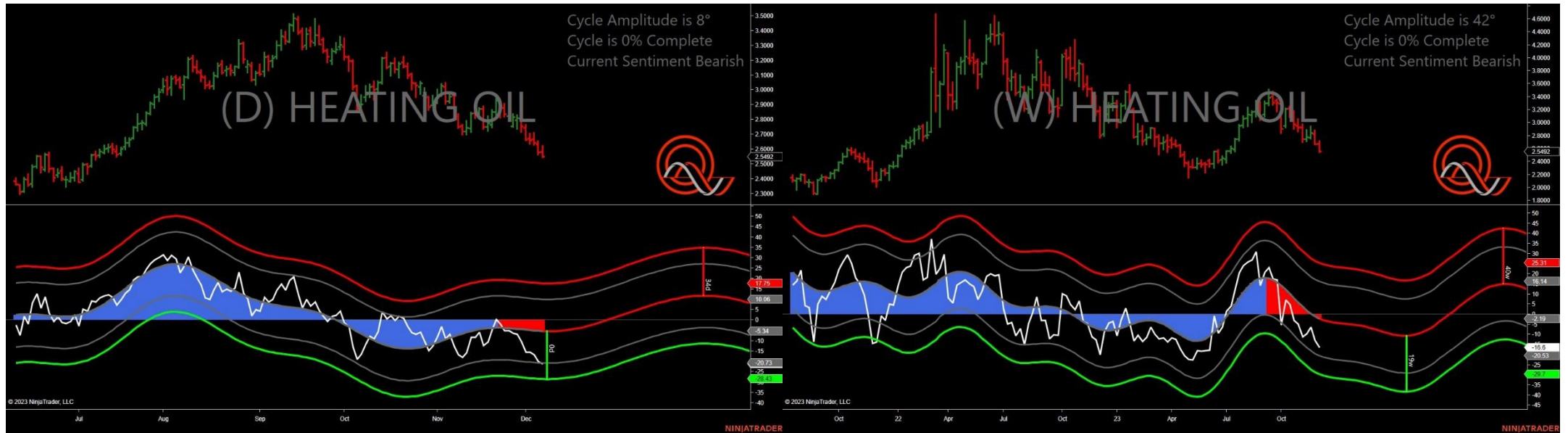
- Amplitude is 33° - Good
- Direction Accuracy is 87.1%
- Market is at Resistance Extreme - Expect market consolidation Between \$68.875 and \$68.3

Copper - Analysis Chart



- Amplitude is 14° - Weak
- Direction Accuracy is 70.9%
- Market is at Resistance Extreme - Expect market consolidation Between \$3.8005 and \$3.7975

Heating Oil - Analysis Chart



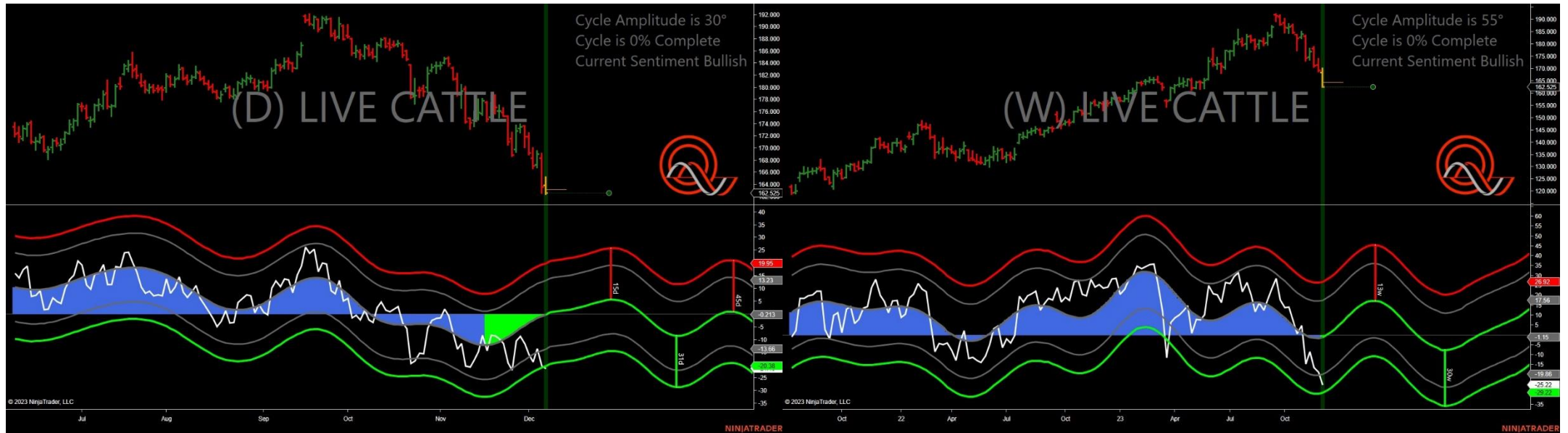
- Amplitude is 8° - Weak
- Direction Accuracy is 86.2%
- Market is at Resistance Extreme - Expect market consolidation Between \$2.62 and \$2.581

Coffee - Analysis Chart



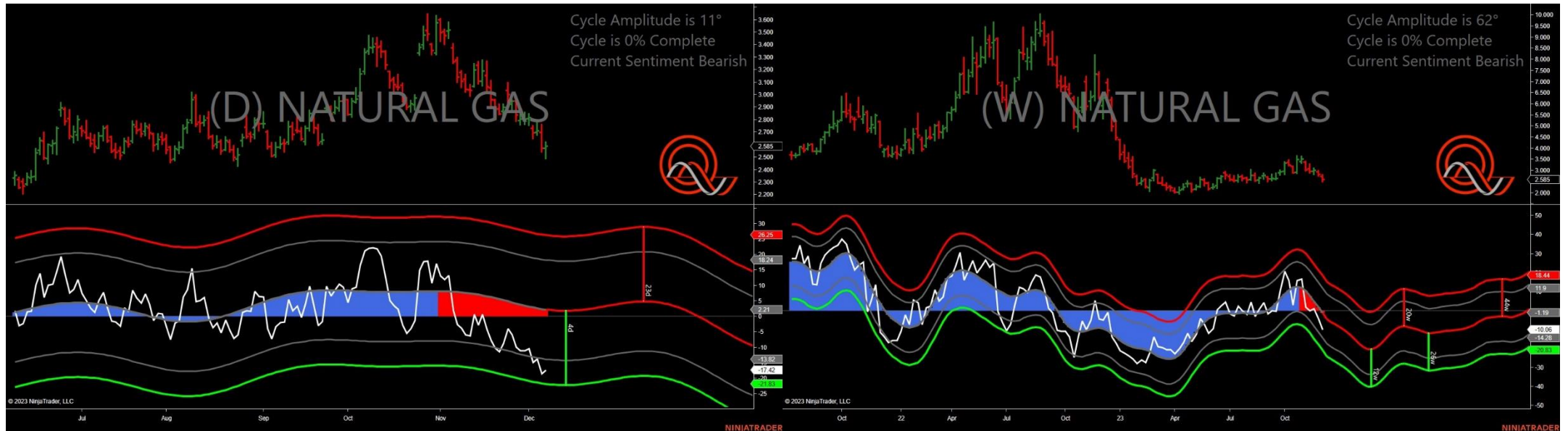
- Amplitude is 15° - Weak
- Direction Accuracy is 91.9%
- Market is at Resistance Extreme - Expect market consolidation Between \$179.5 and \$177.5

Live Cattle - Analysis Chart



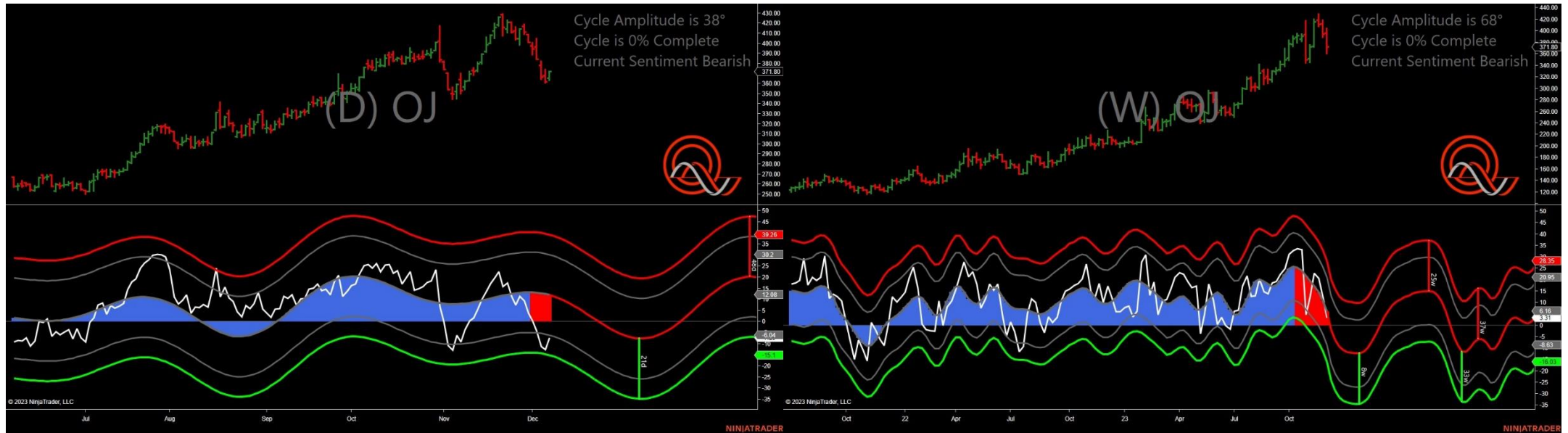
- Amplitude is 30° - Good
- Direction Accuracy is 65.9%
- Market is at Support Extreme - Expect market consolidation Between \$162.525 and \$162.4

Natural Gas - Analysis Chart



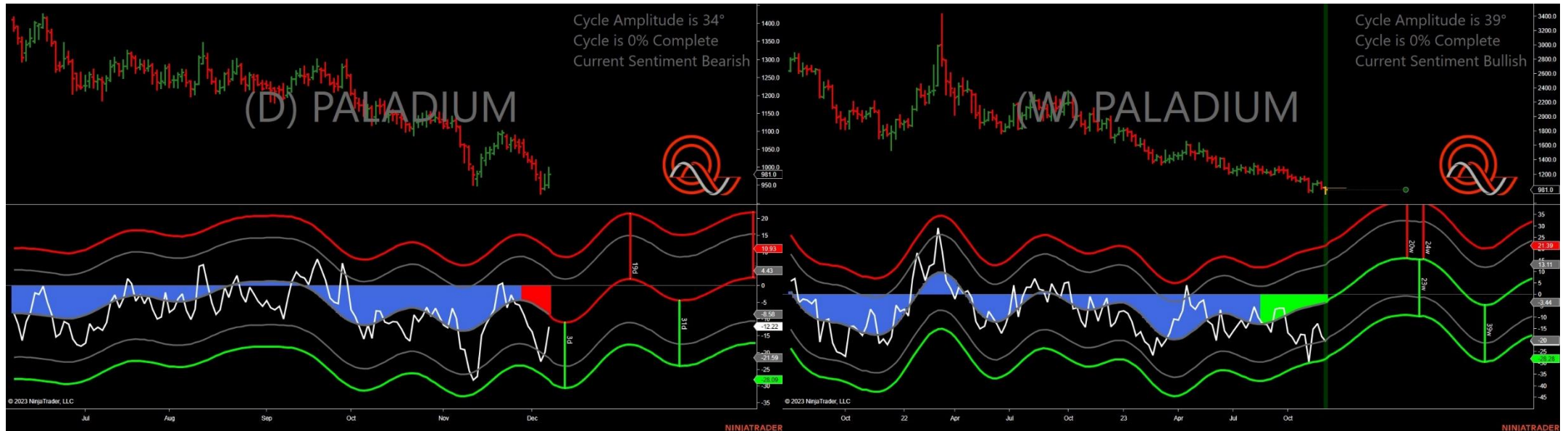
- Amplitude is 11° - Weak
- Direction Accuracy is 94.2%
- Market is at Resistance Extreme - Expect market consolidation Between \$2.621 and \$2.585

Oranje Juice - Analysis Chart



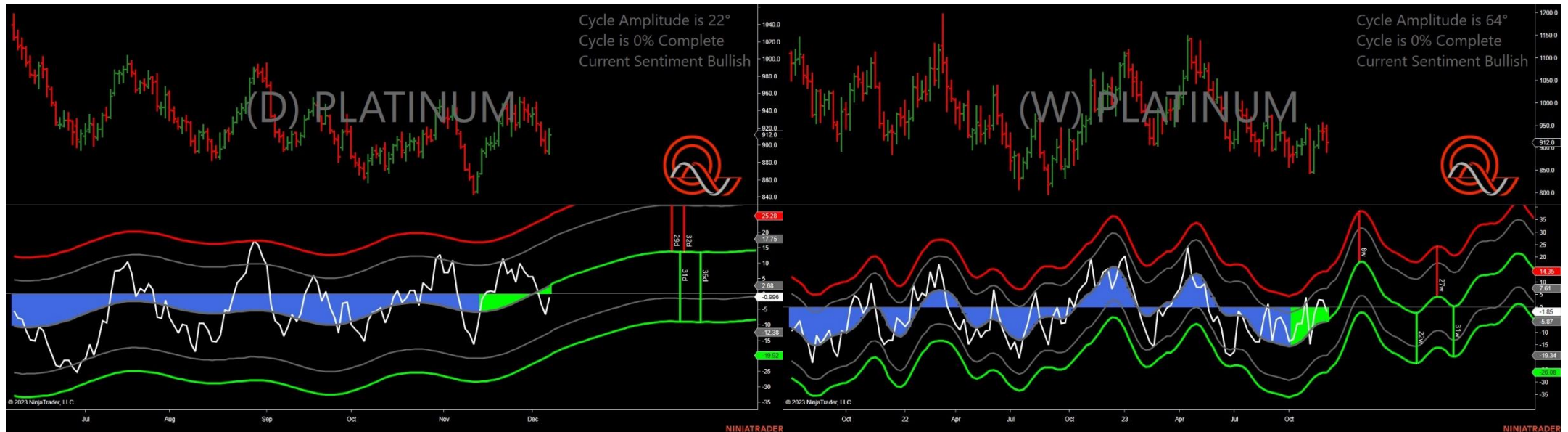
- Amplitude is 38° - Good
- Direction Accuracy is 92%
- Market is at Resistance Extreme - Expect market consolidation Between \$371.8 and \$371.8

Palladium - Analysis Chart



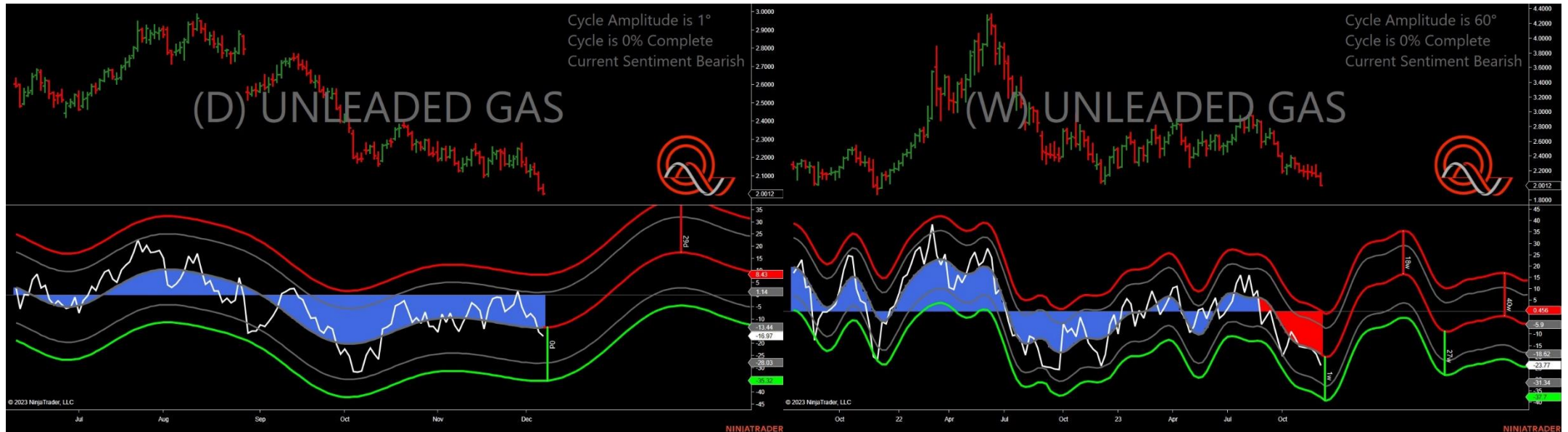
- Amplitude is 34° - Good
- Direction Accuracy is 63.7%
- Market is at Resistance Extreme - Expect market consolidation Between \$999 and \$981

Platinum - Analysis Chart



- Amplitude is 22° - Good
- Direction Accuracy is 69.4%
- Market is at Support Extreme - Expect market consolidation Between \$892.3 and \$890

Unleaded Gas - Analysis Chart



- Amplitude is 1° - Weak
- Direction Accuracy is 85.8%
- Market is at Resistance Extreme - Expect market consolidation Between \$2.0519 and \$2.0323

Sugar - Analysis Chart



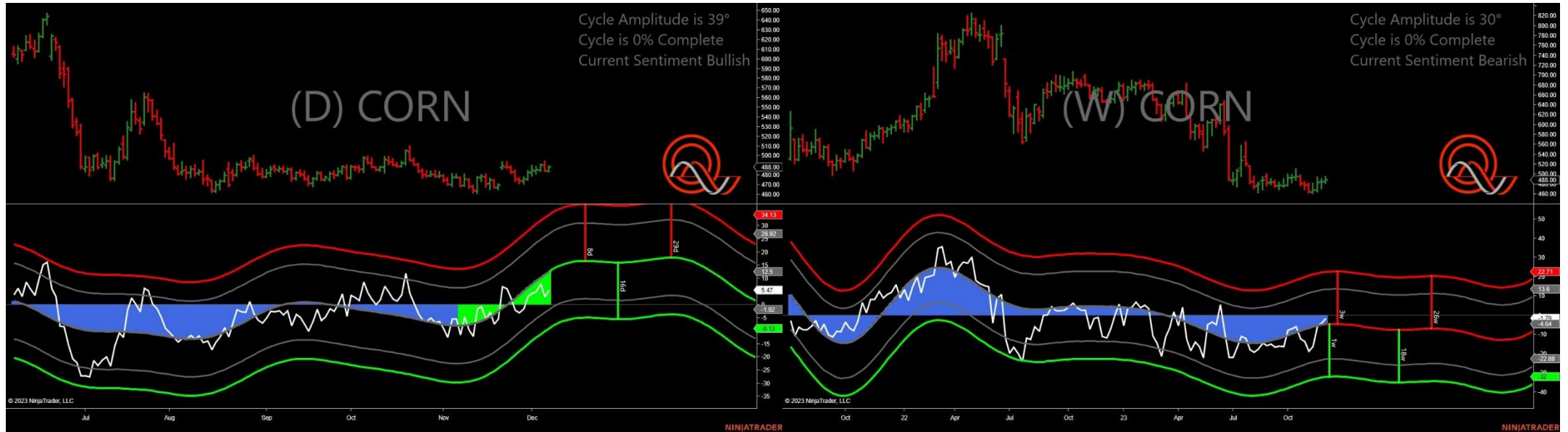
- Amplitude is 40° - Good
- Direction Accuracy is 70.2%
- Market is at Support Extreme - Expect market consolidation Between \$23.03 and \$22.8

Silver - Analysis Chart



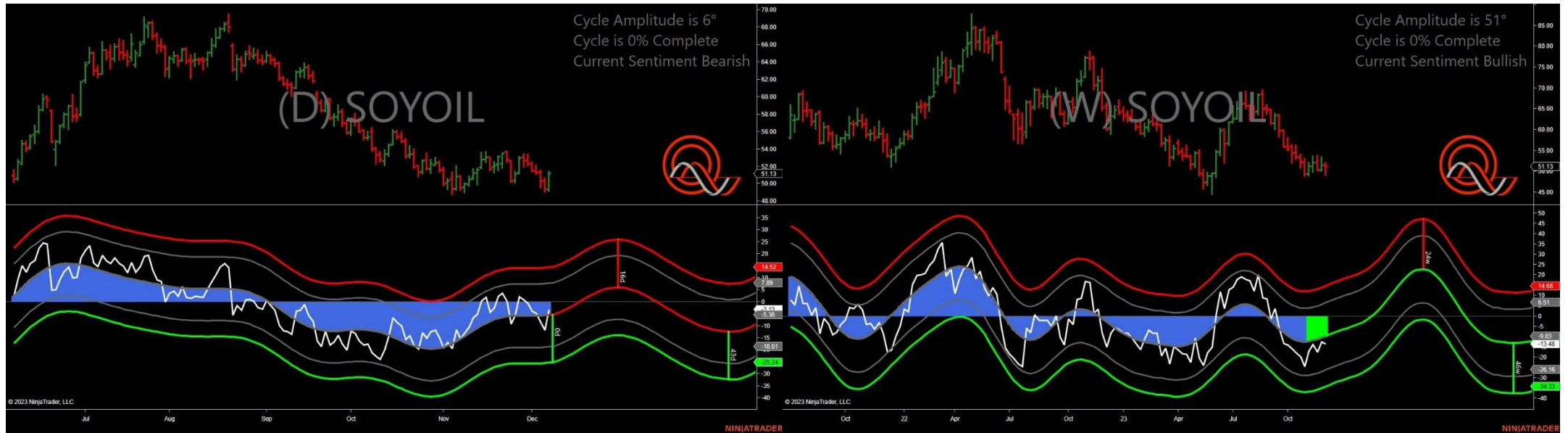
- Amplitude is 6° - Weak
- Direction Accuracy is 53.3%
- Market is at Resistance Extreme - Expect market consolidation Between \$24.35 and \$24.23

Corn - Analysis Chart



- Amplitude is 39° - Good
- Direction Accuracy is 87.5%
- Market is at Support Extreme - Expect market consolidation Between \$484 and \$483

Soybean Oil - Analysis Chart



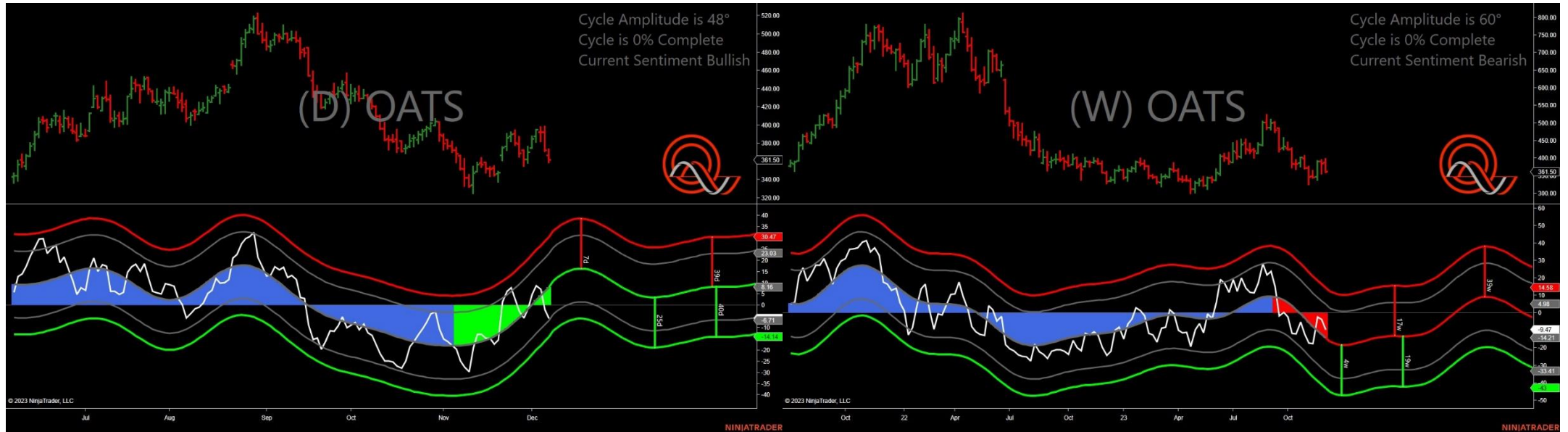
- Amplitude is 6° - Weak
- Direction Accuracy is 54.2%
- Market is at Resistance Extreme - Expect market consolidation Between \$51.4 and \$51.13

Soybean Meal - Analysis Chart



- Amplitude is 18° - Weak
- Direction Accuracy is 42.7%
- Market is at Support Extreme - Expect market consolidation Between \$406.8 and \$402.4

Oats - Analysis Chart



- Amplitude is 48° - Strong
- Direction Accuracy is 83.5%
- Market is at Support Extreme - Expect market consolidation Between \$361.5 and \$359

Soybeans - Analysis Chart



- Amplitude is 32° - Good
- Direction Accuracy is 82.3%
- Market is at Support Extreme - Expect market consolidation Between \$1296 and \$1292

Wheat - Analysis Chart



- Amplitude is 2° - Weak
- Direction Accuracy is 74.9%
- Market is at Resistance Extreme - Expect market consolidation Between \$645 and \$642.25