



QUANTCYCLES

COMMODITIES

OPPORTUNITIES & EXTREMES

About This Document

- This document contains two cyclical market patterns based on the QuantCycles Cycle Analysis Software
- **Cycle Continuation Opportunity** – These are defined as a deviation of the forecast direction that extend to the upper or lower extremes. There is a high probability that the market will return to the forecast direction within a projected time frame. A Dual Opportunity has a higher probability of returning to the forecast direction than a Single Opportunity.
 - Always look for market commonality. For example, if you're looking at a DOW30 stock to buy, does the index look positive as well?
 - As the market approaches the cycle forecast turning point, the probability of the market following that direction decays. This is indicated by the "Cycle Percent Complete" note at the top of the chart, as well as predicted duration dates
 - At an Opportunity, a strong market may continue to go against the forecast trend, therefore, we recommend waiting for confirmation of the turning point before acting on it.
 - If the Market has not returned to the direction of the cycle by the minimum expected cycle duration date, consider the cycle incorrect.
- **Cycle Extreme** – These are defined as a deviation of the forecast direction, but with a lessor probability of return to the forecast direction. A Dual Extreme is a stronger Support / Resistance than a Single Extreme.
 - The Cycle Continuation Opportunity information above applies here as well, but can be utilized more to take profits than to consider for entry
 - Indicates that a market is at or near a Cycle Support or Resistance.
 - There is a high probability of a market stall.

Analysis Overview

- 2 Dual Extremes
- 4 Single Extremes
- 17 Analysis

Cycle Extremes

2 Dual Extremes

- HG - Copper
- ZO - Oats

4 Single Extremes

- CC - Cocoa
- HE - Live Hogs
- ZL - Soybean Oil
- ZW - Wheat

Copper - Dual Extreme



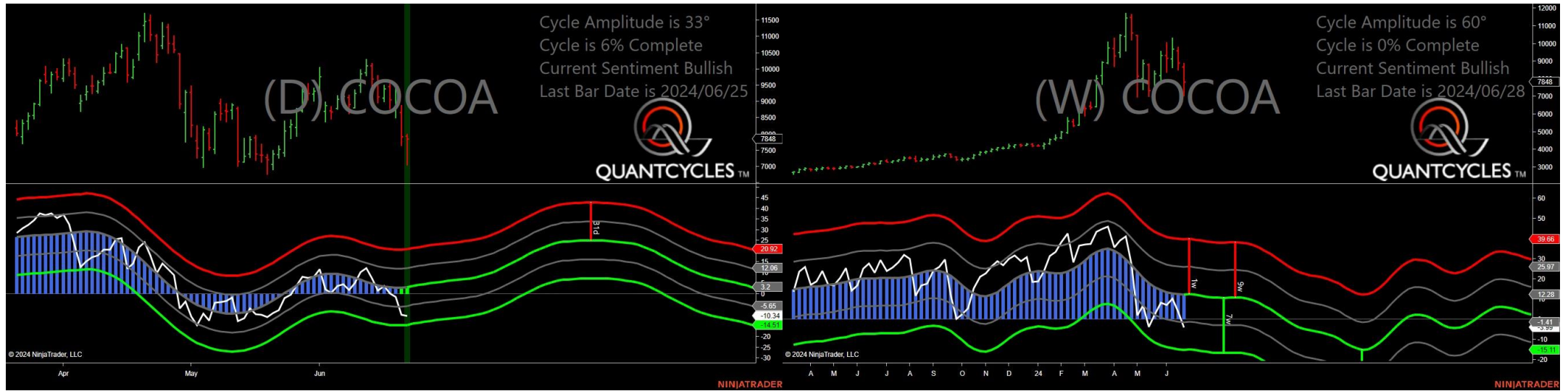
- Amplitude is 7° - Weak
- Direction Accuracy is 50%
- Market is at Support Extreme - Expect market consolidation Between \$4.366 and \$4.357

Oats - Dual Extreme



- Amplitude is 45° - Strong
- Direction Accuracy is 50%
- Market is at Support Extreme - Expect market consolidation Between \$311.25 and \$306.75

Cocoa - Single Daily Extreme



- Amplitude is 33° - Good
- Direction Accuracy is 50%
- Market is at Support Extreme - Expect market consolidation Between \$7848 and \$7054

Live Hogs - Single Daily Extreme



- Amplitude is 32° - Good
- Direction Accuracy is 50%
- Market is at Support Extreme - Expect market consolidation Between \$86.75 and \$86.4

Soybean Oil - Single Weekly Extreme



- Amplitude is 14° - Weak
- Direction Accuracy is 0%
- Market is at Resistance Extreme - Expect market consolidation Between \$43.92 and \$43.79

Wheat - Single Daily Extreme



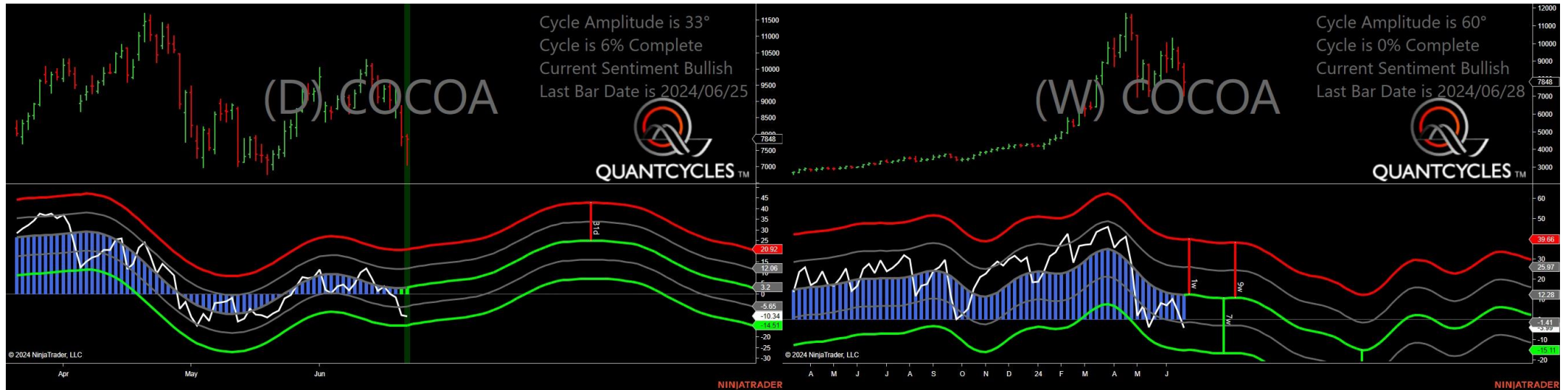
- Amplitude is 41° - Strong
- Direction Accuracy is 50%
- Market is at Support Extreme - Expect market consolidation Between \$560.5 and \$558.75

Analysis Charts

17 Charts

- CL - Crude Oil
- CT - Cotton
- GC - Gold
- GF - Feeder Cattle
- HO - Heating Oil
- KC - Coffee
- LE - Live Cattle
- NG - Natural Gas
- OJ - Oranje Juice
- PA - Palladium
- PL - Platinum
- RB - Unleaded Gas
- SB - Sugar
- SI - Silver
- ZC - Corn
- ZM - Soybean Meal
- ZS - Soybeans

Cocoa - Analysis Chart



- Amplitude is 33° - Good
- Direction Accuracy is 50%
- Market is at Support Extreme - Expect market consolidation Between \$7848 and \$7054

Crude Oil - Analysis Chart



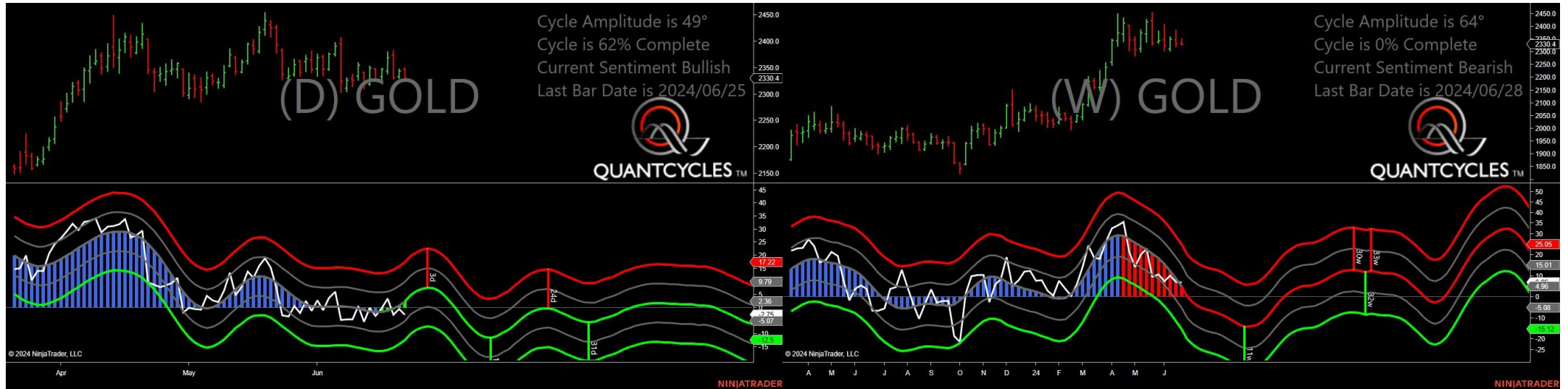
- Amplitude is 26° - Good
- Direction Accuracy is 50%
- Market is at Support Extreme - Expect market consolidation Between \$80.78 and \$80.69

Cotton - Analysis Chart



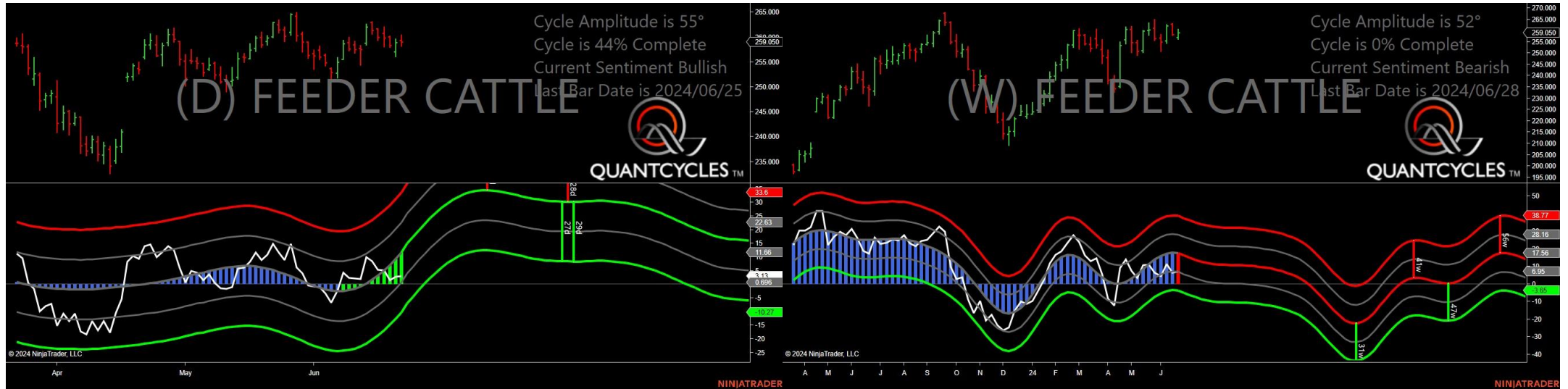
- Amplitude is 26° - Good
- Direction Accuracy is 50%
- Market is at Support Extreme - Expect market consolidation Between \$73.3 and \$72.9

Gold - Analysis Chart



- Amplitude is 49° - Strong
- Direction Accuracy is 50%
- Market is at Support Extreme - Expect market consolidation Between \$2330.4 and \$2327.1

Feeder Cattle - Analysis Chart



- Amplitude is 55° - Strong
- Direction Accuracy is 50%
- Market is at Support Extreme - Expect market consolidation Between \$259.05 and \$258.2

Live Hogs - Analysis Chart



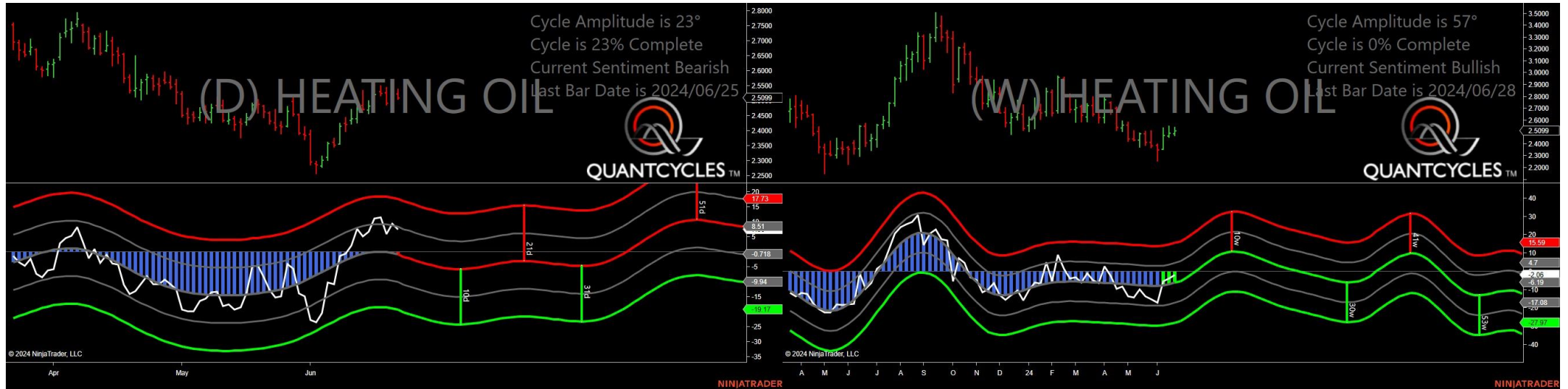
- Amplitude is 32° - Good
- Direction Accuracy is 50%
- Market is at Support Extreme - Expect market consolidation Between \$86.75 and \$86.4

Copper - Analysis Chart



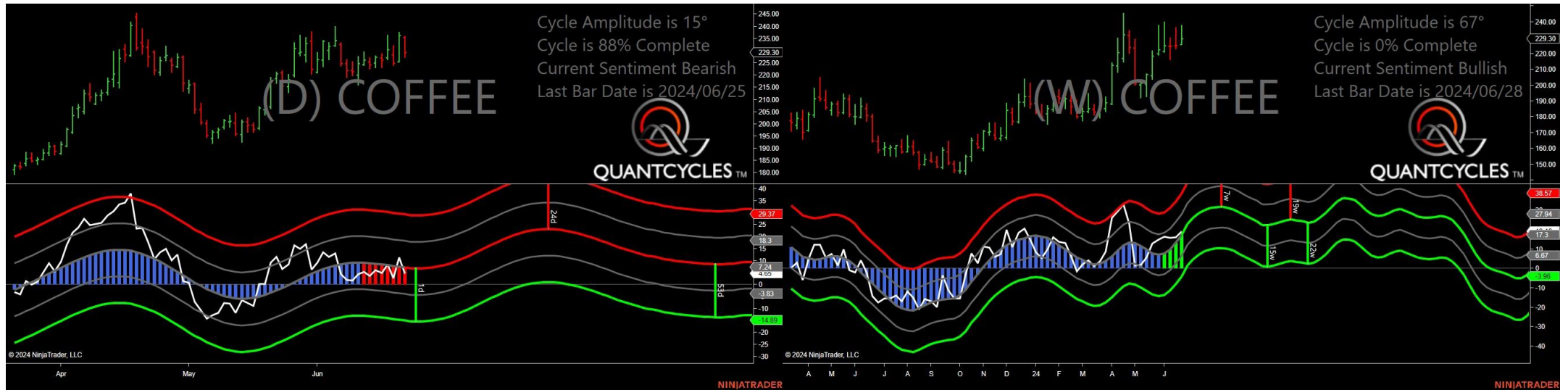
- Amplitude is 7° - Weak
- Direction Accuracy is 50%
- Market is at Support Extreme - Expect market consolidation Between \$4.366 and \$4.357

Heating Oil - Analysis Chart



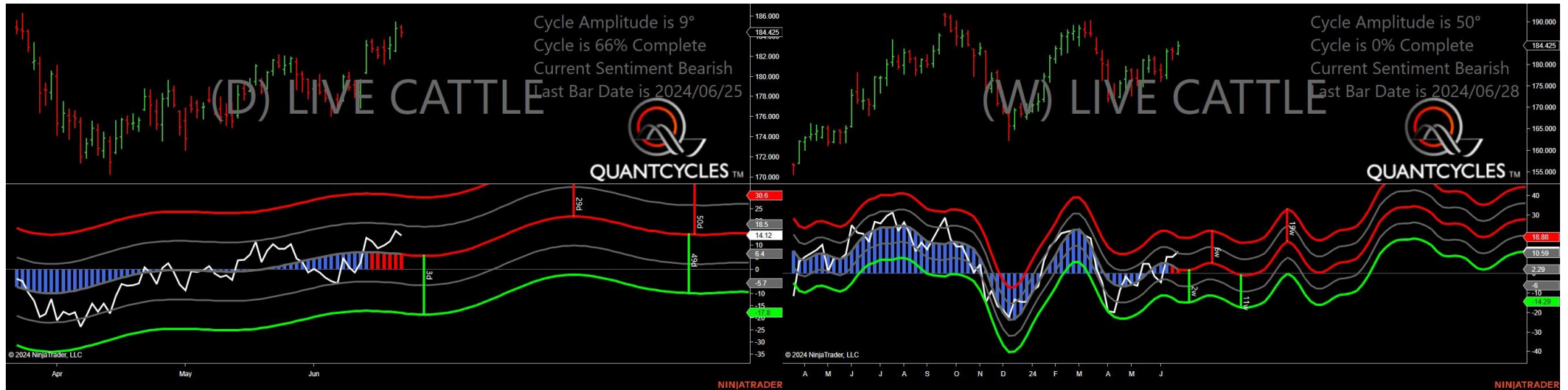
- Amplitude is 23° - Good
- Direction Accuracy is 0%
- Market is at Resistance Extreme - Expect market consolidation Between \$2.5386 and \$2.5221

Coffee - Analysis Chart



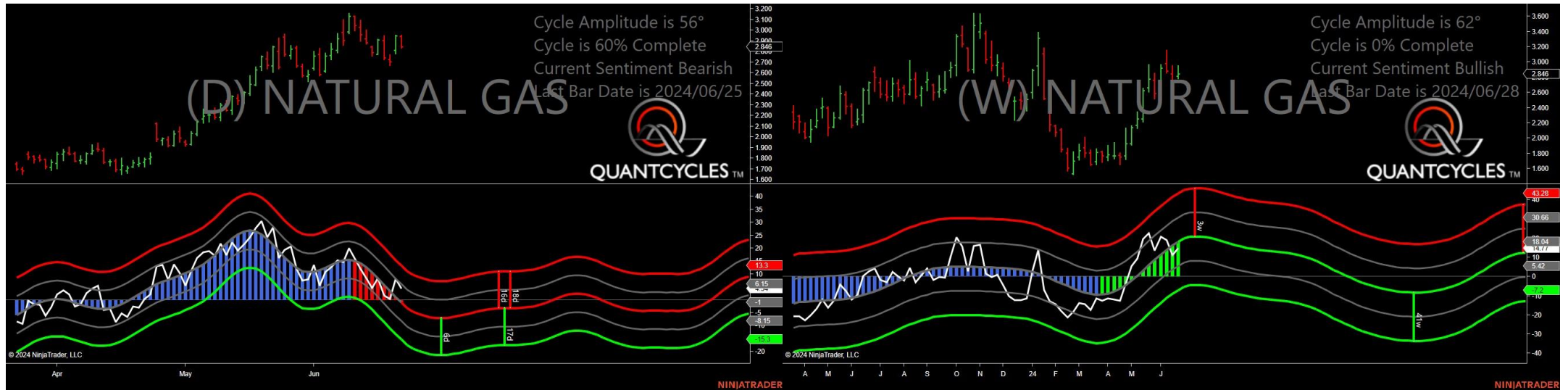
- Amplitude is 15° - Weak
- Direction Accuracy is 0%
- Market is at Resistance Extreme - Expect market consolidation Between \$235.9 and \$235.5

Live Cattle - Analysis Chart



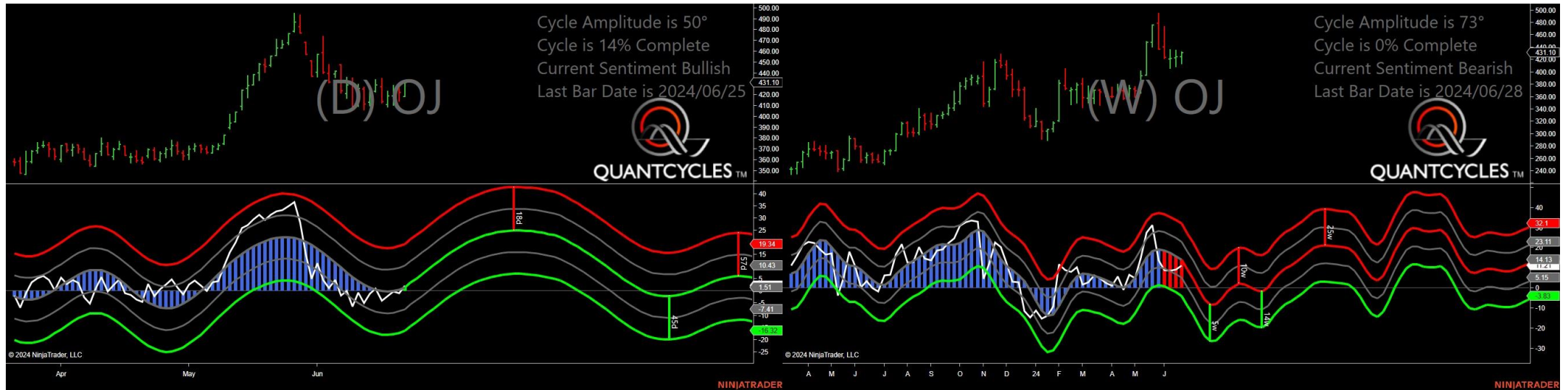
- Amplitude is 9° - Weak
- Direction Accuracy is 0%
- Market is at Resistance Extreme - Expect market consolidation Between \$185.125 and \$184.925

Natural Gas - Analysis Chart



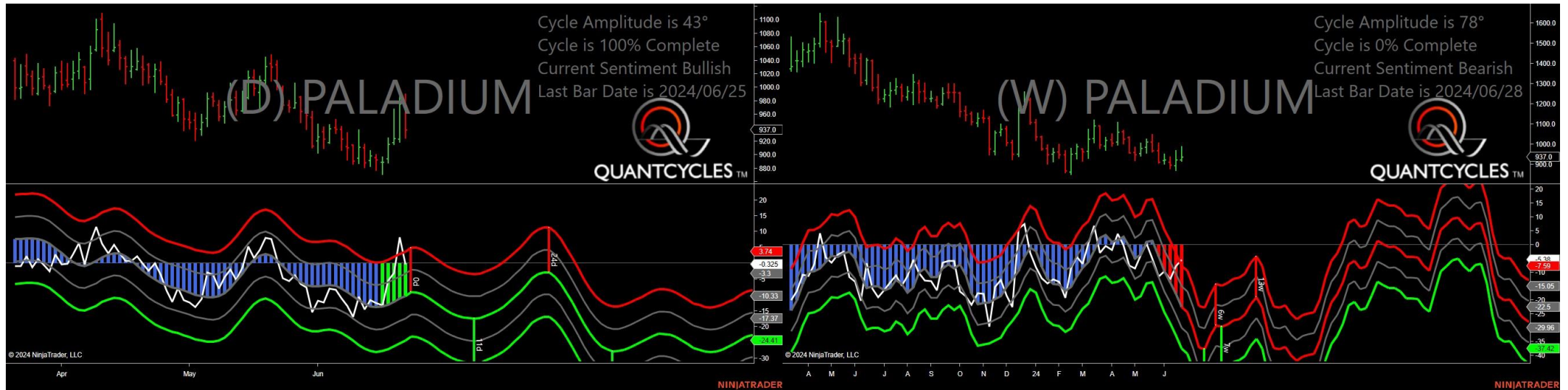
- Amplitude is 56° - Strong
- Direction Accuracy is 0%
- Market is at Resistance Extreme - Expect market consolidation Between \$2.951 and \$2.943

Oranje Juice - Analysis Chart



- Amplitude is 50° - Strong
- Direction Accuracy is 50%
- Market is at Support Extreme - Expect market consolidation Between \$418.65 and \$418.6

Palladium - Analysis Chart



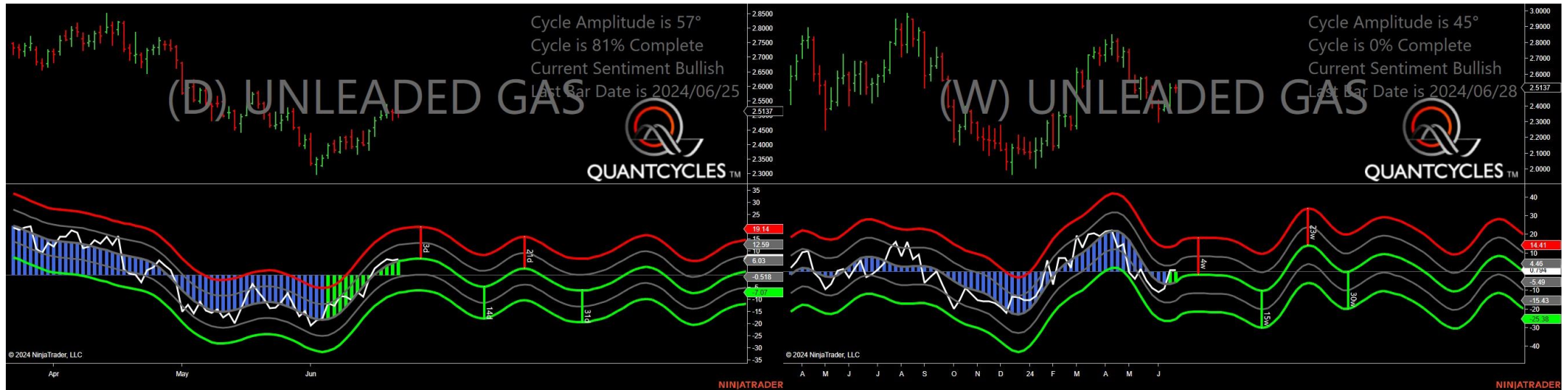
- Amplitude is 43° - Strong
- Direction Accuracy is 50%
- Market is at Support Extreme - Expect market consolidation Between \$937 and \$925.5

Platinum - Analysis Chart



- Amplitude is 51° - Strong
- Direction Accuracy is 0%
- Market is at Resistance Extreme - Expect market consolidation Between \$1008.4 and \$999.4

Unleaded Gas - Analysis Chart



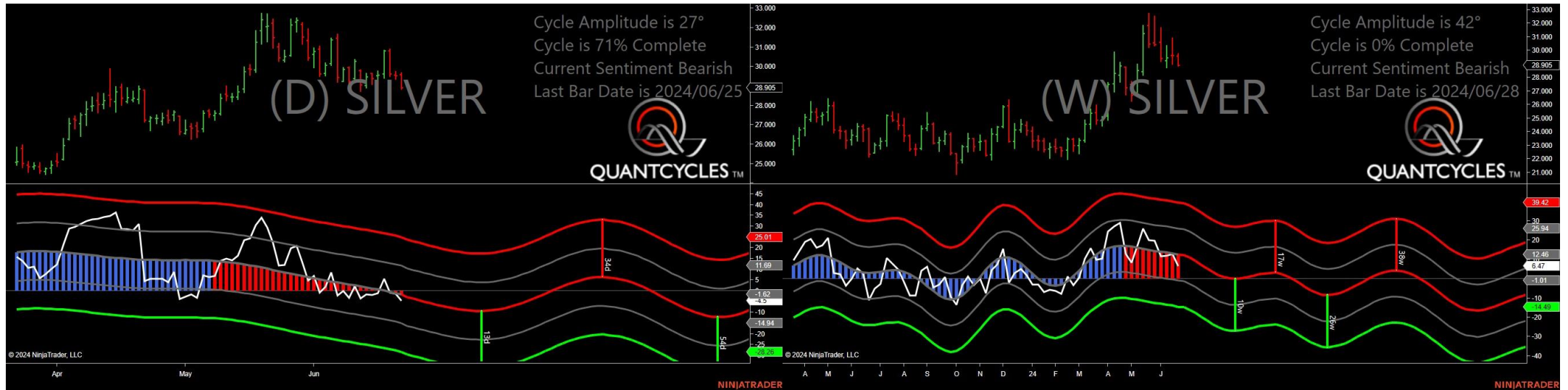
- Amplitude is 57° - Strong
- Direction Accuracy is 50%
- Market is at Support Extreme - Expect market consolidation Between \$2.5137 and \$2.4956

Sugar - Analysis Chart



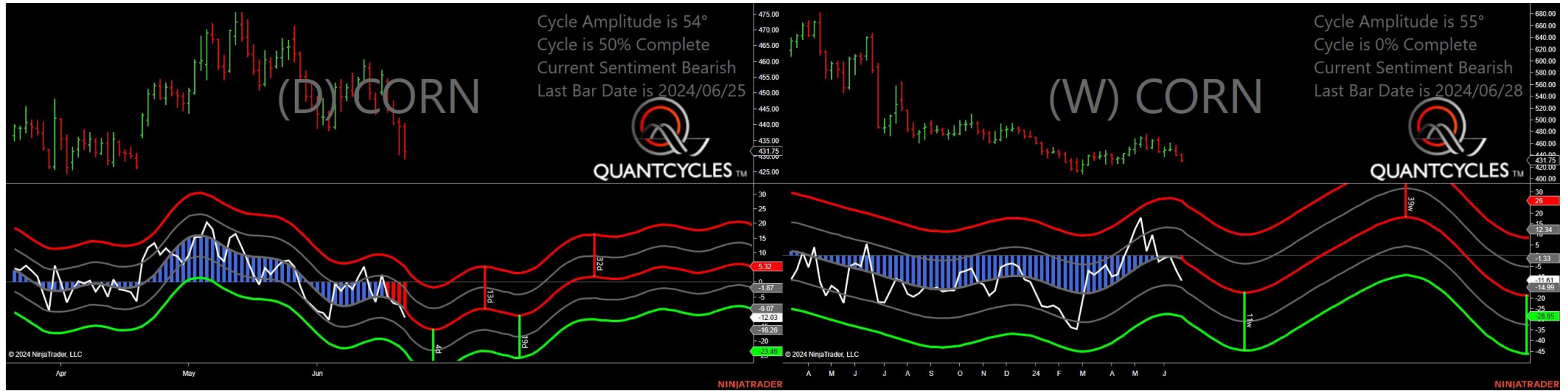
- Amplitude is 54° - Strong
- Direction Accuracy is 50%
- Market is at Support Extreme - Expect market consolidation Between \$19.49 and \$19.22

Silver - Analysis Chart



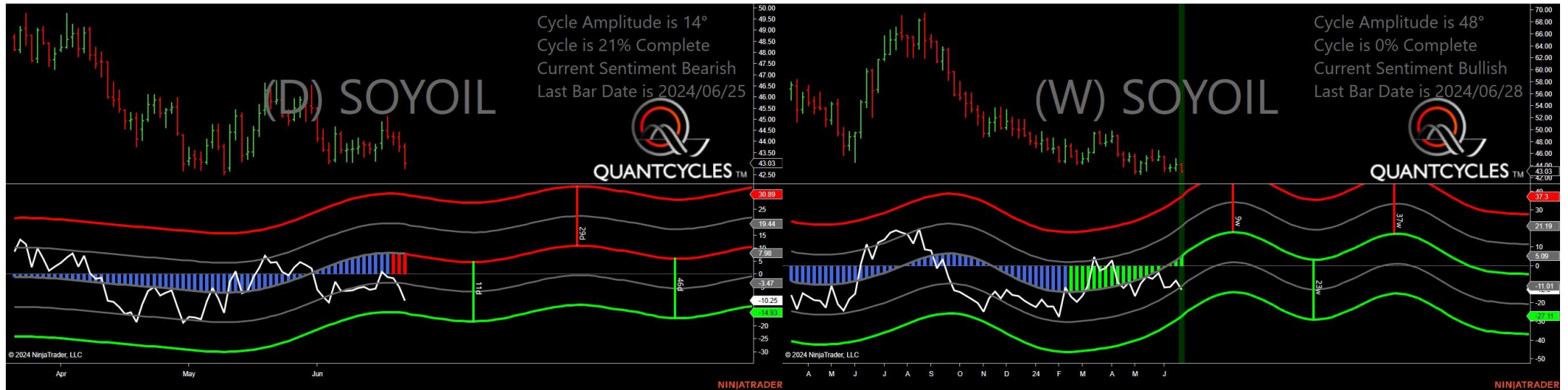
- Amplitude is 27° - Good
- Direction Accuracy is 0%
- Market is at Resistance Extreme - Expect market consolidation Between \$29.69 and \$29.605

Corn - Analysis Chart



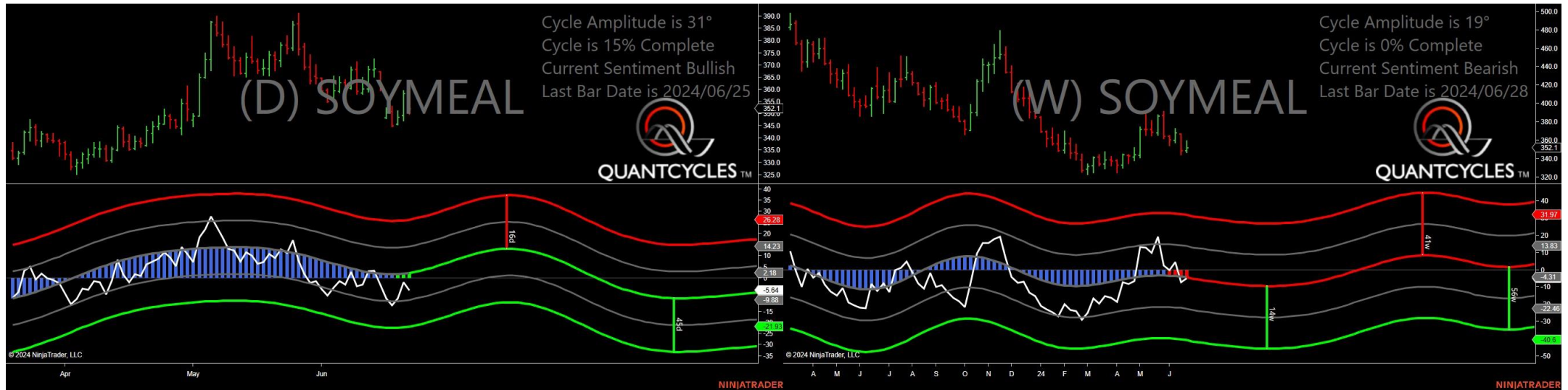
- Amplitude is 54° - Strong
- Direction Accuracy is 0%
- Market is at Resistance Extreme - Expect market consolidation Between \$440.5 and \$439.5

Soybean Oil - Analysis Chart



- Amplitude is 14° - Weak
- Direction Accuracy is 0%
- Market is at Resistance Extreme - Expect market consolidation Between \$43.92 and \$43.79

Soybean Meal - Analysis Chart



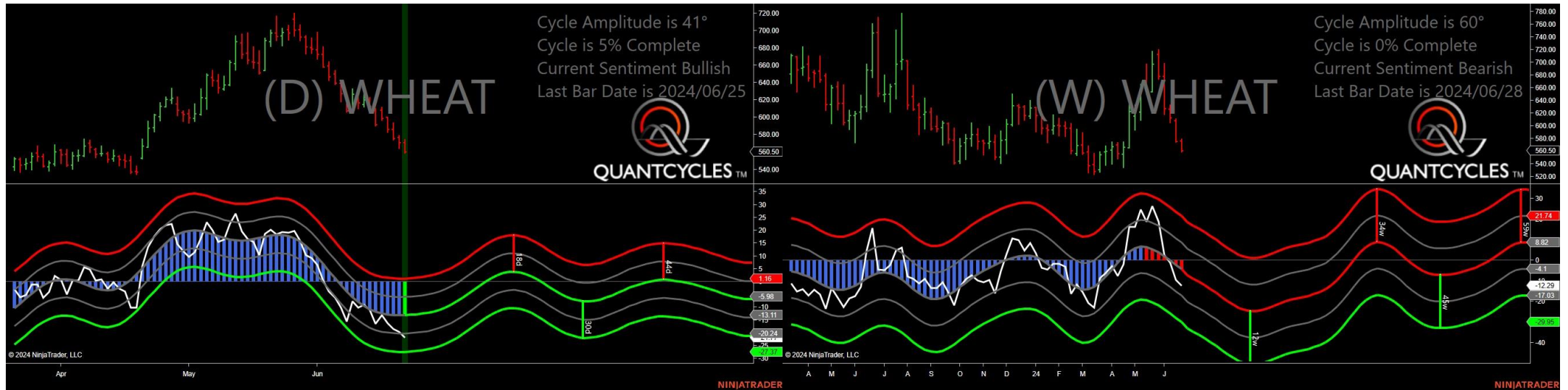
- Amplitude is 31° - Good
- Direction Accuracy is 50%
- Market is at Support Extreme - Expect market consolidation Between \$352.1 and \$349.9

Oats - Analysis Chart



- Amplitude is 45° - Strong
- Direction Accuracy is 50%
- Market is at Support Extreme - Expect market consolidation Between \$311.25 and \$306.75

Wheat - Analysis Chart



- Amplitude is 41° - Strong
- Direction Accuracy is 50%
- Market is at Support Extreme - Expect market consolidation Between \$560.5 and \$558.75