



QUANTCYCLES

COMMODITIES

OPPORTUNITIES & EXTREMES

About This Document

- This document contains two cyclical market patterns based on the QuantCycles Cycle Analysis Software
- **Cycle Continuation Opportunity** – These are defined as a deviation of the forecast direction that extend to the upper or lower extremes. There is a high probability that the market will return to the forecast direction within a projected time frame. A Dual Opportunity has a higher probability of returning to the forecast direction than a Single Opportunity.
 - Always look for market commonality. For example, if you're looking at a DOW30 stock to buy, does the index look positive as well?
 - As the market approaches the cycle forecast turning point, the probability of the market following that direction decays. This is indicated by the "Cycle Percent Complete" note at the top of the chart, as well as predicted duration dates
 - At an Opportunity, a strong market may continue to go against the forecast trend, therefore, we recommend waiting for confirmation of the turning point before acting on it.
 - If the Market has not returned to the direction of the cycle by the minimum expected cycle duration date, consider the cycle incorrect.
- **Cycle Extreme** – These are defined as a deviation of the forecast direction, but with a lessor probability of return to the forecast direction. A Dual Extreme is a stronger Support / Resistance than a Single Extreme.
 - The Cycle Continuation Opportunity information above applies here as well, but can be utilized more to take profits than to consider for entry
 - Indicates that a market is at or near a Cycle Support or Resistance.
 - There is a high probability of a market stall.

Analysis Overview

- 1 Single Opportunities
- 1 Dual Extremes
- 7 Single Extremes
- 14 Analysis

Cycle Continuation Opportunities

1 Single Opportunities

- CT - Cotton

Cotton - Single Weekly Opportunity



- Projected Direction Up with an Accuracy of 50%, and a Good Amplitude of 27°
- Expected Duration of Cycle to 8/6/2024
- Expected Price Movement of Cycle is between 656 and 1313 Ticks

Cycle Extremes

1 Dual Extremes

- ZO - Oats

7 Single Extremes

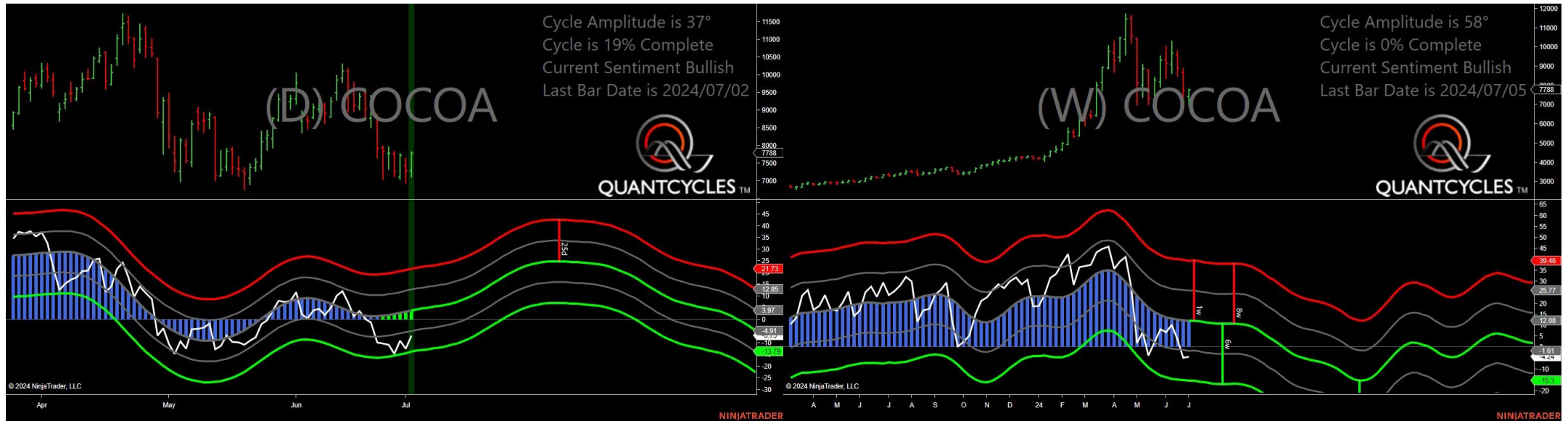
- CC - Cocoa
- HO - Heating Oil
- PA - Palladium
- PL - Platinum
- RB - Unleaded Gas
- ZC - Corn
- ZL - Soybean Oil

Oats - Dual Extreme



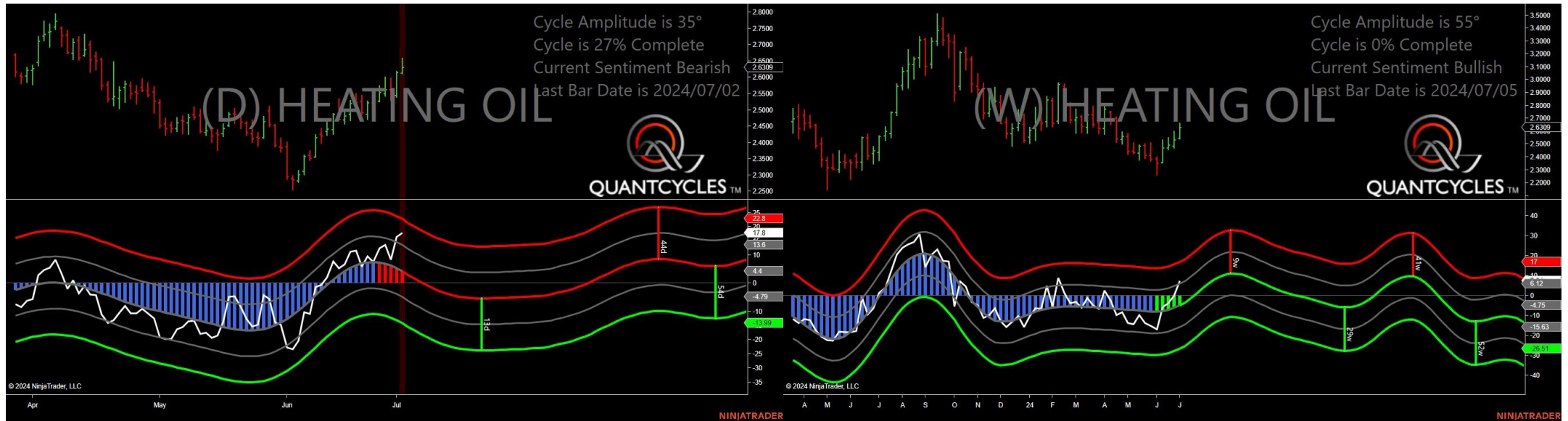
- Amplitude is 39° - Good
- Direction Accuracy is 50%
- Market is at Support Extreme - Expect market consolidation Between \$311 and \$307.5

Cocoa - Single Daily Extreme



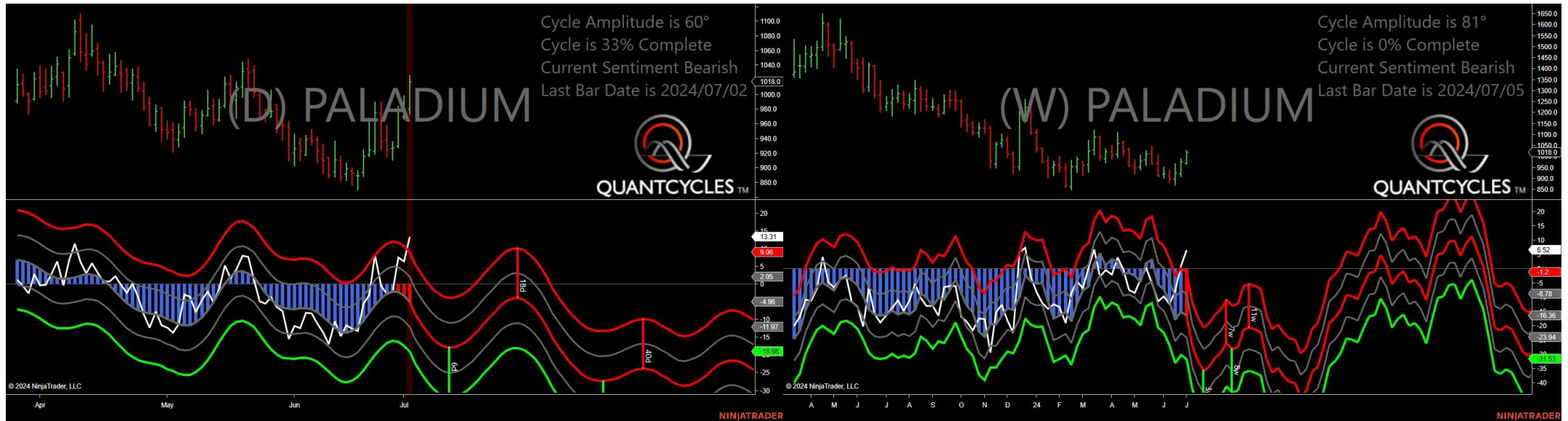
- Amplitude is 37° - Good
- Direction Accuracy is 50%
- Market is at Support Extreme - Expect market consolidation Between \$7292 and \$7118

Heating Oil - Single Daily Extreme



- Amplitude is 35° - Good
- Direction Accuracy is 0%
- Market is at Resistance Extreme - Expect market consolidation Between \$2.6595 and \$2.6309

Palladium - Single Daily Extreme



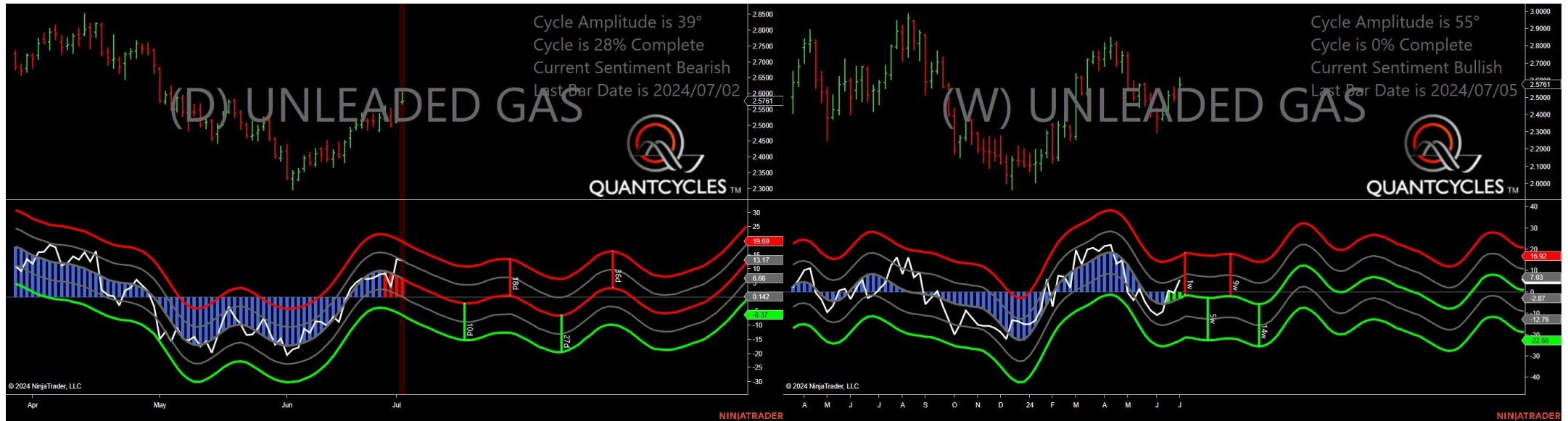
- Amplitude is 60° - Strong
- Direction Accuracy is 0%
- Market is at Resistance Extreme - Expect market consolidation Between \$1026 and \$1018

Platinum - Single Daily Extreme



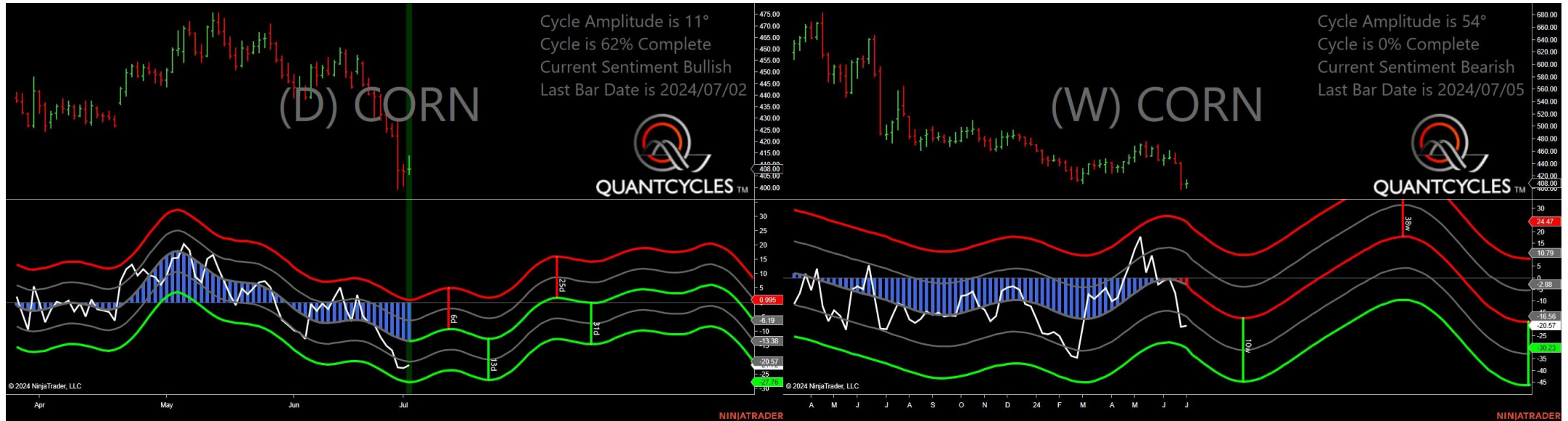
- Amplitude is 52° - Strong
- Direction Accuracy is 0%
- Market is at Resistance Extreme - Expect market consolidation Between \$1018.4 and \$1012.4

Unleaded Gas - Single Daily Extreme



- Amplitude is 39° - Good
- Direction Accuracy is 0%
- Market is at Resistance Extreme - Expect market consolidation Between \$2.615 and \$2.5761

Corn - Single Daily Extreme



- Amplitude is 11° - Weak
- Direction Accuracy is 50%
- Market is at Support Extreme - Expect market consolidation Between \$408 and \$405.75

Soybean Oil - Single Daily Extreme



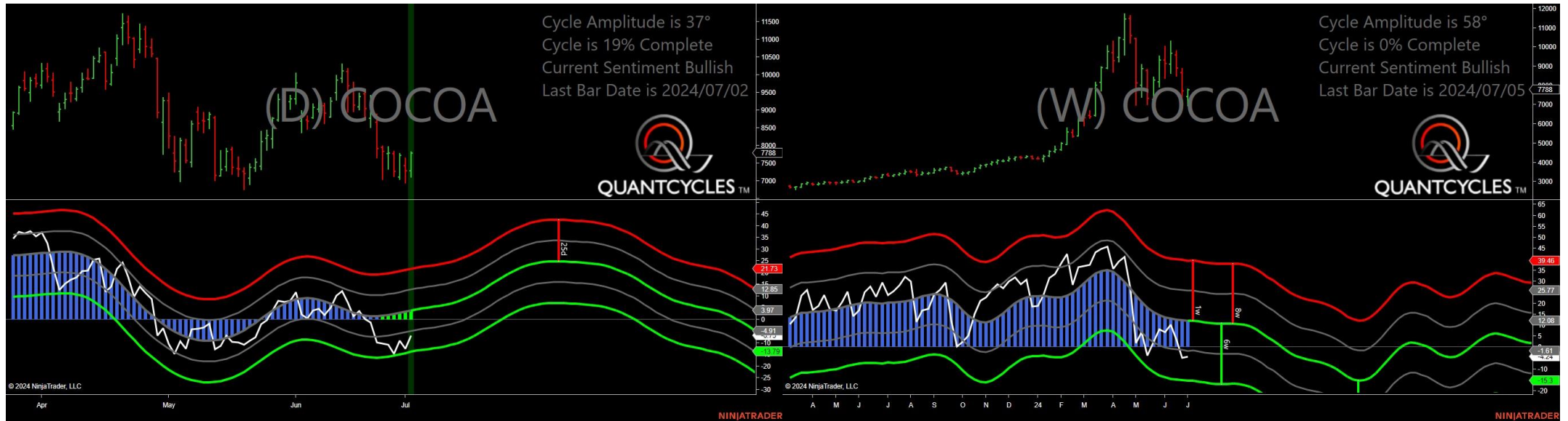
- Amplitude is 11° - Weak
- Direction Accuracy is 0%
- Market is at Resistance Extreme - Expect market consolidation Between \$47.25 and \$47.04

Analysis Charts

14 Charts

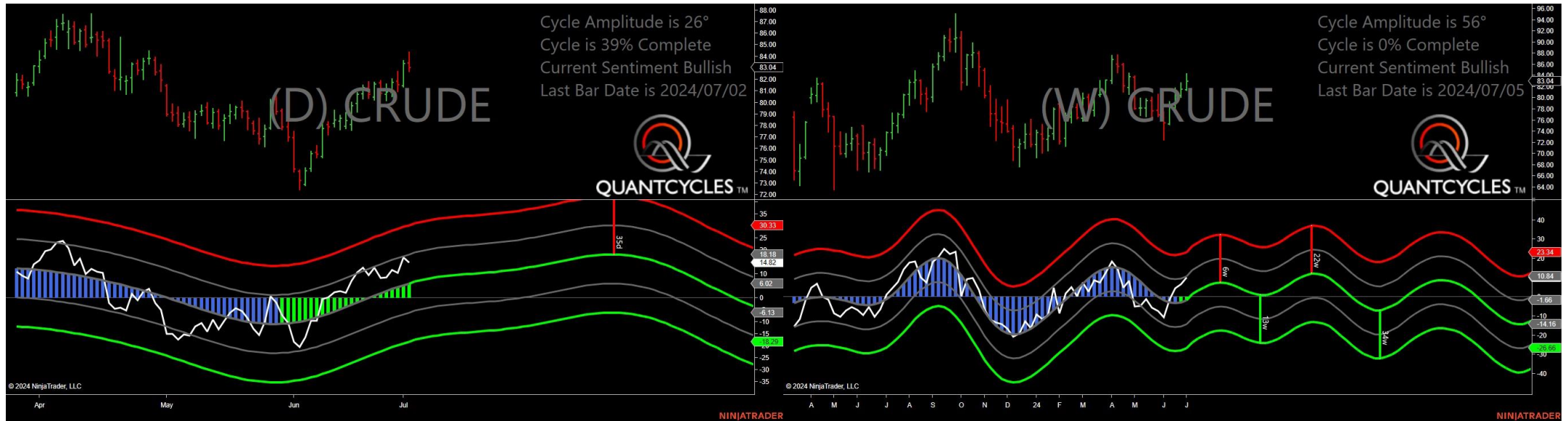
- CL - Crude Oil
- GC - Gold
- GF - Feeder Cattle
- HE - Live Hogs
- HG - Copper
- KC - Coffee
- LE - Live Cattle
- NG - Natural Gas
- OJ - Oranje Juice
- SB - Sugar
- SI - Silver
- ZM - Soybean Meal
- ZS - Soybeans
- ZW - Wheat

Cocoa - Analysis Chart



- Amplitude is 37° - Good
- Direction Accuracy is 50%
- Market is at Support Extreme - Expect market consolidation Between \$7292 and \$7118

Crude Oil - Analysis Chart



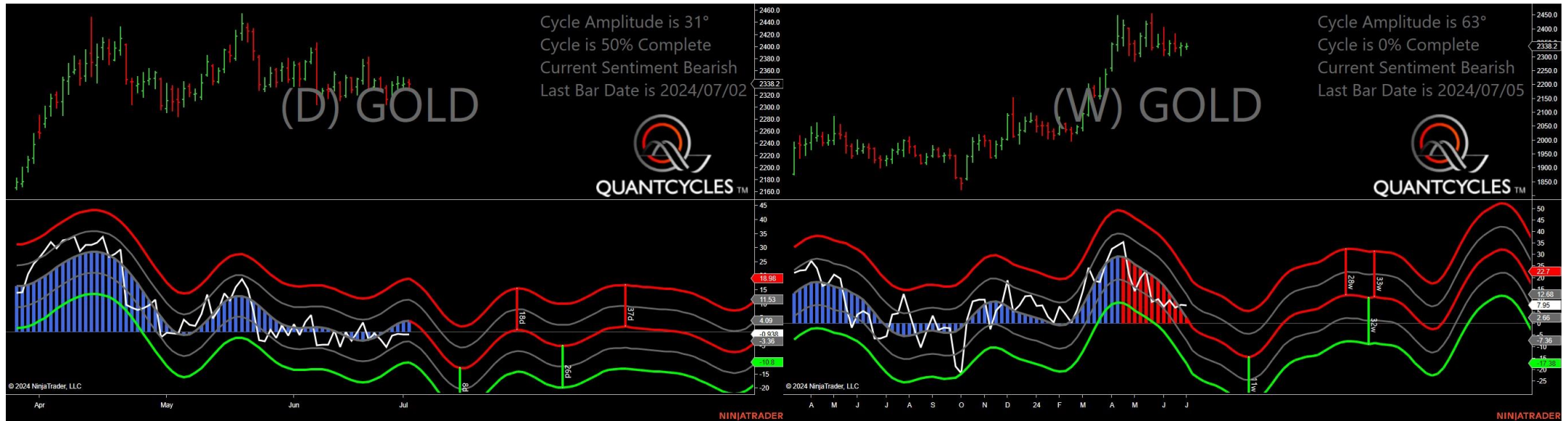
- Amplitude is 26° - Good
- Direction Accuracy is 50%
- Market is at Support Extreme - Expect market consolidation Between \$83.04 and \$82.72

Cotton - Analysis Chart



- Amplitude is 27° - Good
- Direction Accuracy is 50%
- Market is at Support Extreme - Expect market consolidation Between \$72.7 and \$72.3

Gold - Analysis Chart



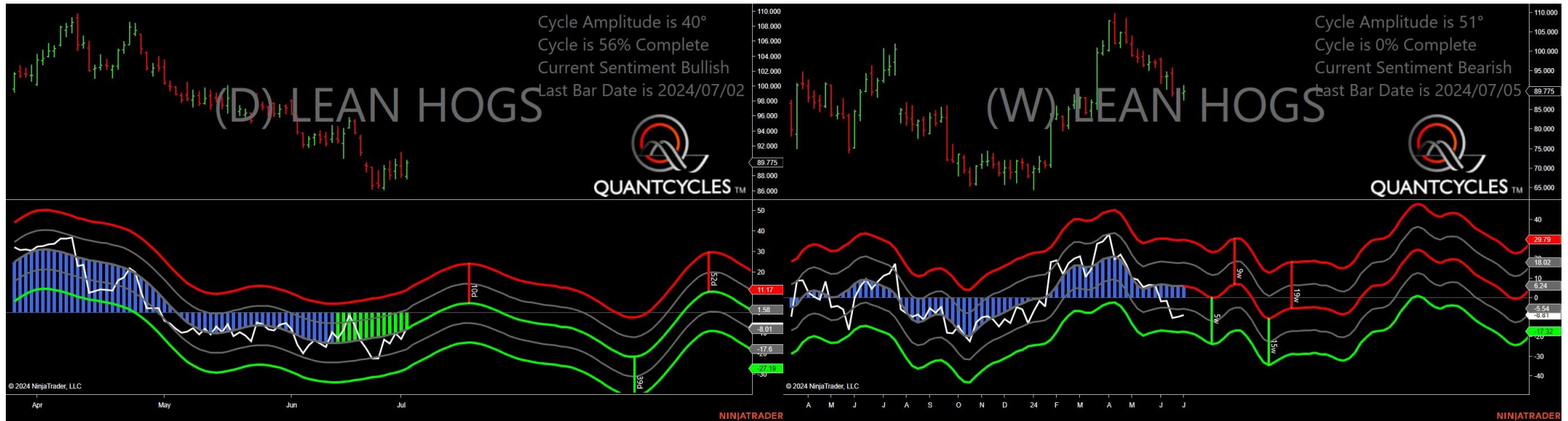
- Amplitude is 31° - Good
- Direction Accuracy is 0%
- Market is at Resistance Extreme - Expect market consolidation Between \$2346.1 and \$2341.6

Feeder Cattle - Analysis Chart



- Amplitude is 55° - Strong
- Direction Accuracy is 50%
- Market is at Support Extreme - Expect market consolidation Between \$258.075 and \$257.45

Live Hogs - Analysis Chart



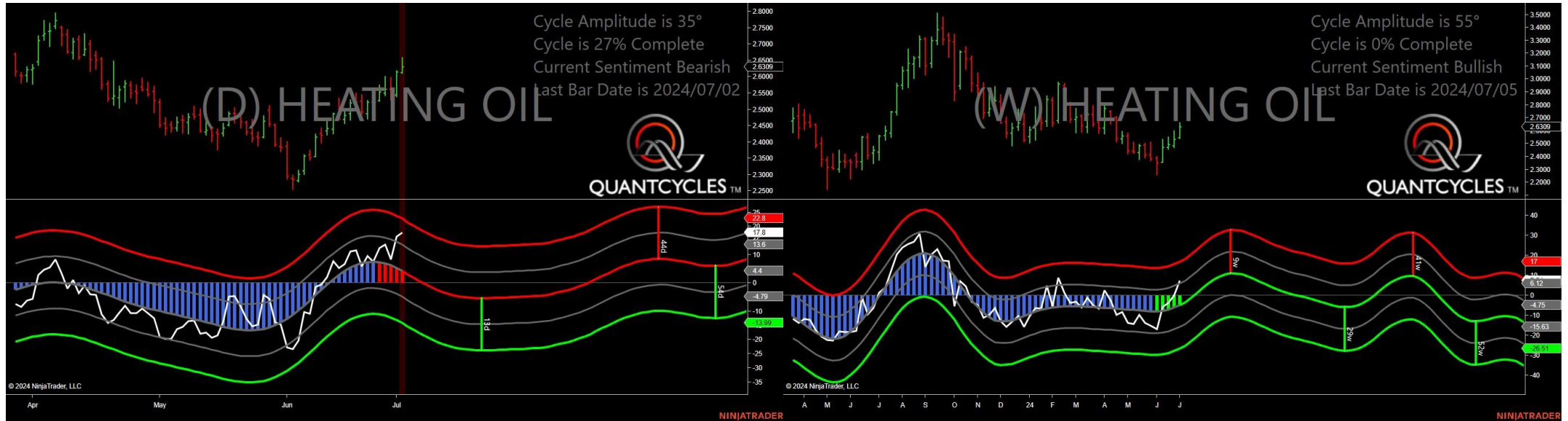
- Amplitude is 40° - Good
- Direction Accuracy is 50%
- Market is at Support Extreme - Expect market consolidation Between \$87.95 and \$87.625

Copper - Analysis Chart



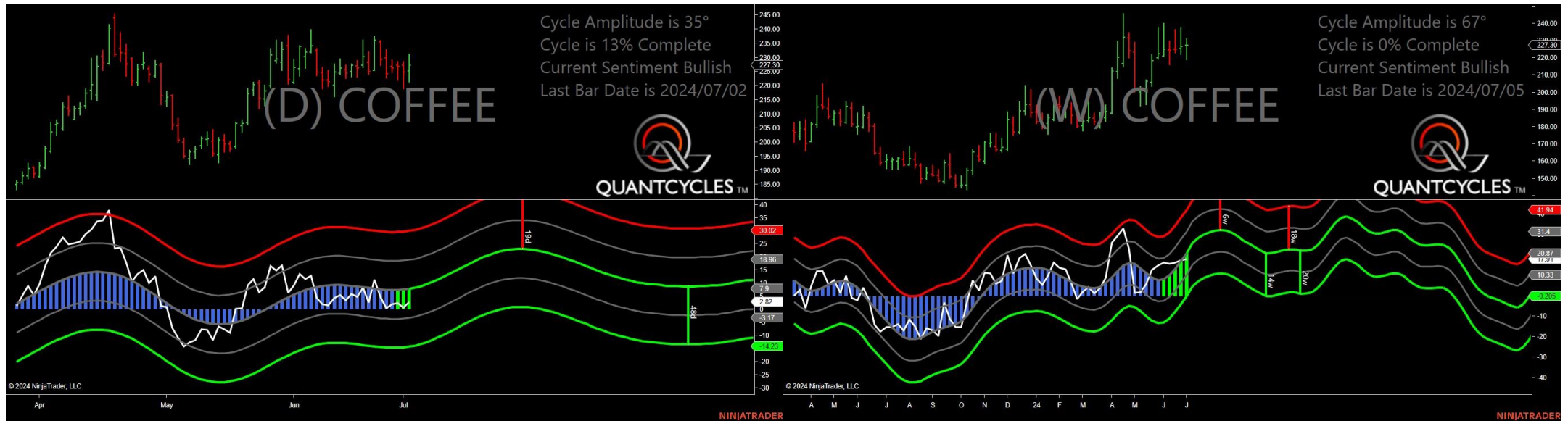
- Amplitude is 7° - Weak
- Direction Accuracy is 50%
- Market is at Support Extreme - Expect market consolidation Between \$4.4165 and \$4.391

Heating Oil - Analysis Chart



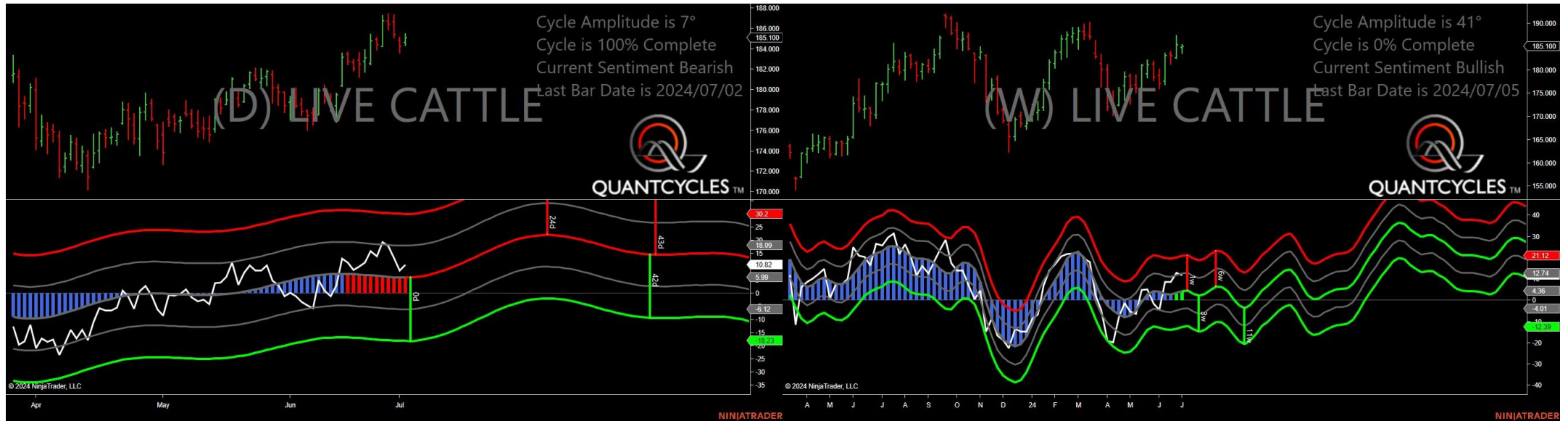
- Amplitude is 35° - Good
- Direction Accuracy is 0%
- Market is at Resistance Extreme - Expect market consolidation Between \$2.6595 and \$2.6309

Coffee - Analysis Chart



- Amplitude is 35° - Good
- Direction Accuracy is 50%
- Market is at Support Extreme - Expect market consolidation Between \$225.2 and \$221.45

Live Cattle - Analysis Chart



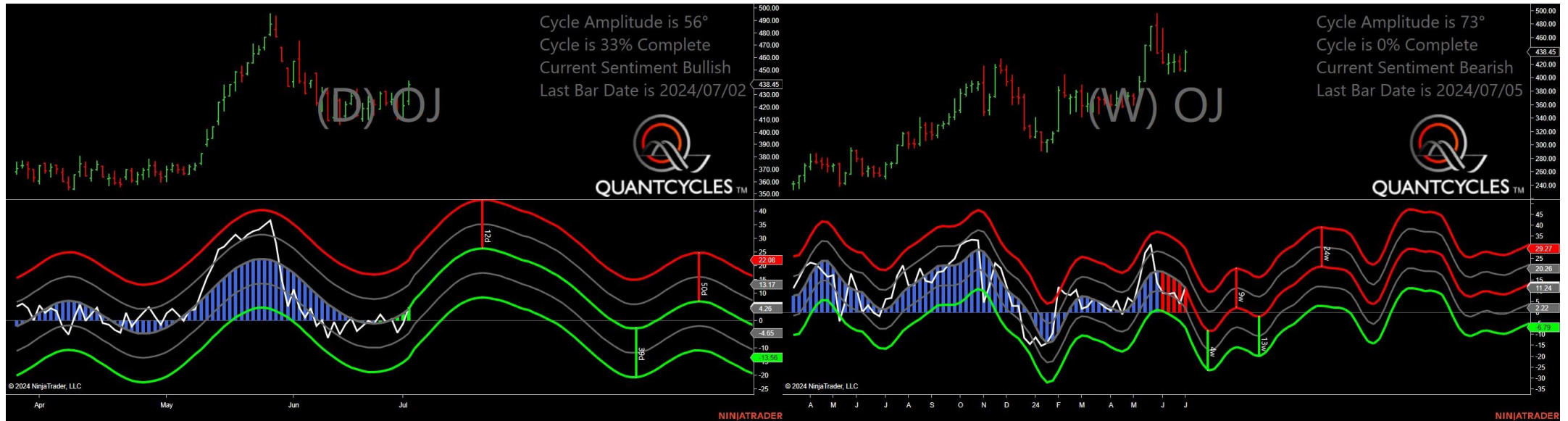
- Amplitude is 7° - Weak
- Direction Accuracy is 0%
- Market is at Resistance Extreme - Expect market consolidation Between \$185.475 and \$185.1

Natural Gas - Analysis Chart



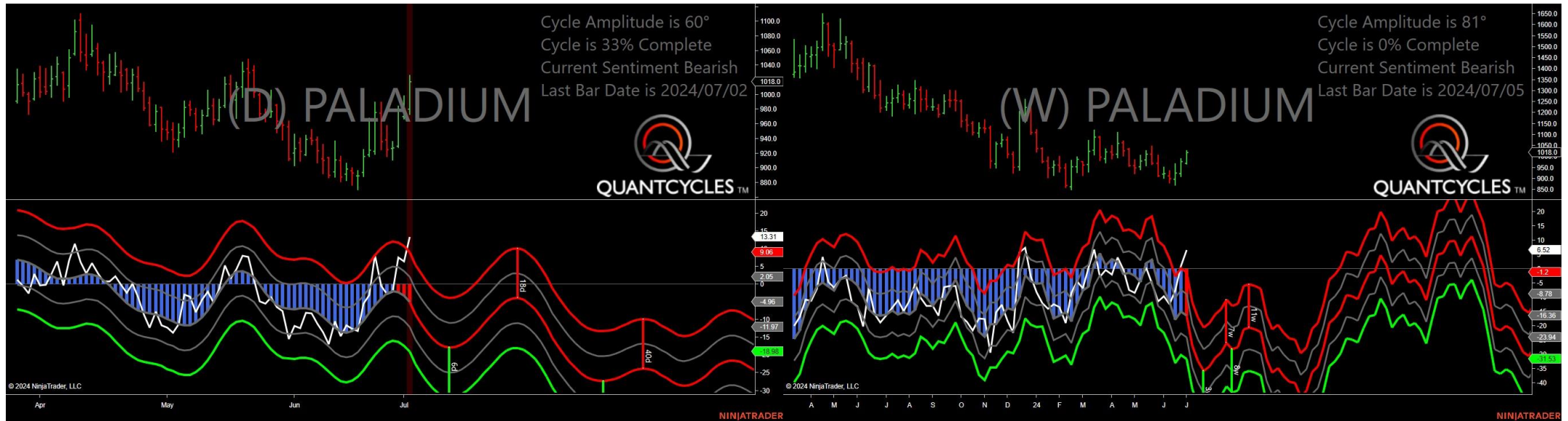
- Amplitude is 52° - Strong
- Direction Accuracy is 0%
- Market is at Resistance Extreme - Expect market consolidation Between \$2.484 and \$2.476

Oranje Juice - Analysis Chart



- Amplitude is 56° - Strong
- Direction Accuracy is 50%
- Market is at Support Extreme - Expect market consolidation Between \$425.15 and \$422.15

Palladium - Analysis Chart



- Amplitude is 60° - Strong
- Direction Accuracy is 0%
- Market is at Resistance Extreme - Expect market consolidation Between \$1026 and \$1018

Platinum - Analysis Chart



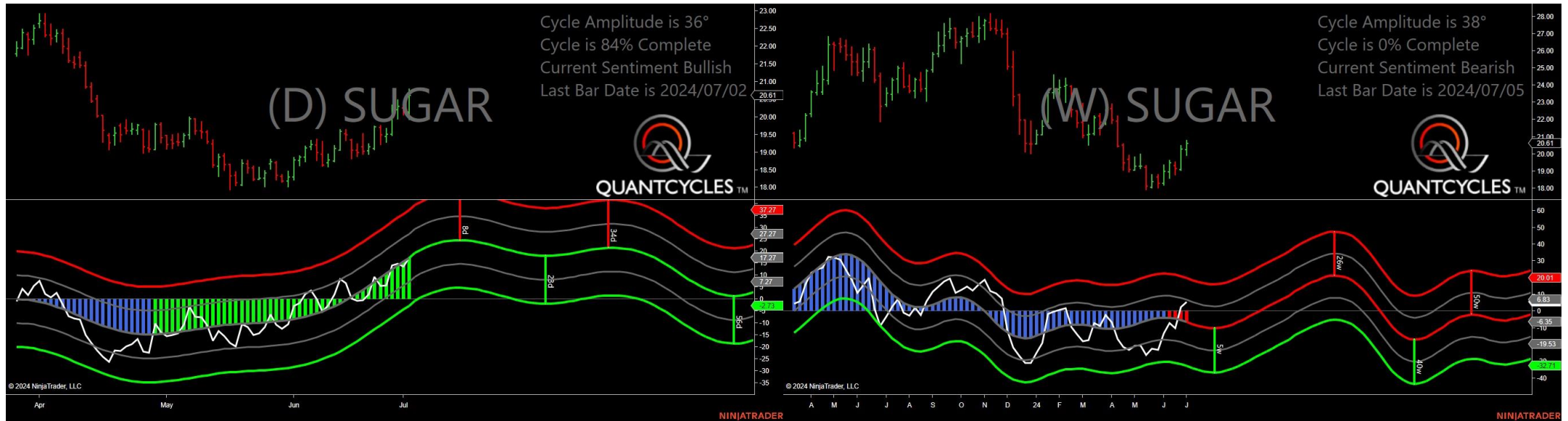
- Amplitude is 52° - Strong
- Direction Accuracy is 0%
- Market is at Resistance Extreme - Expect market consolidation Between \$1018.4 and \$1012.4

Unleaded Gas - Analysis Chart



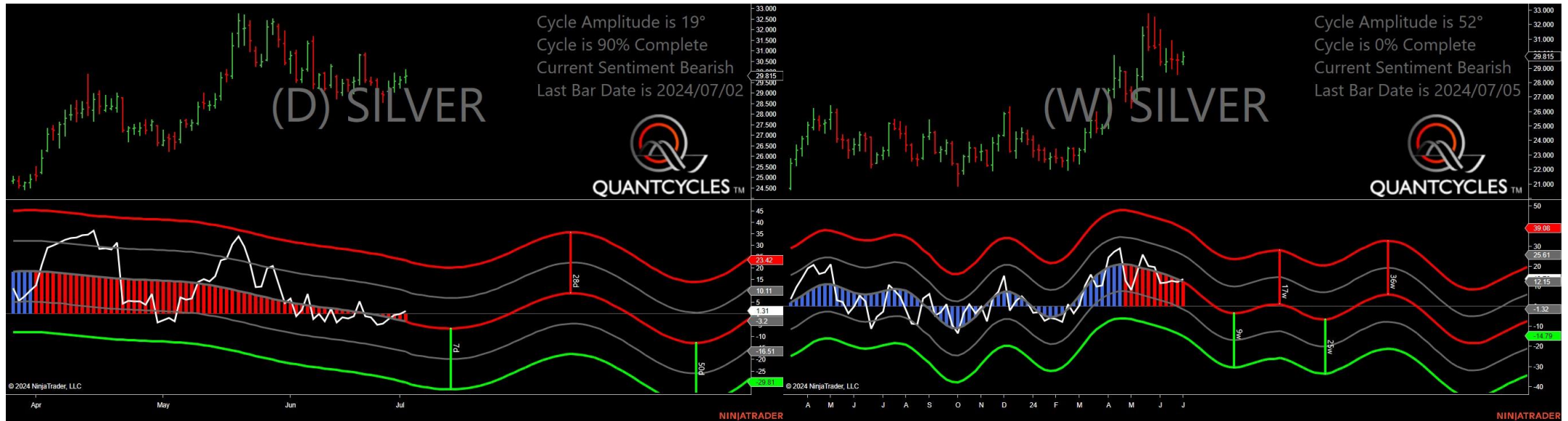
- Amplitude is 39° - Good
- Direction Accuracy is 0%
- Market is at Resistance Extreme - Expect market consolidation Between \$2.615 and \$2.5761

Sugar - Analysis Chart



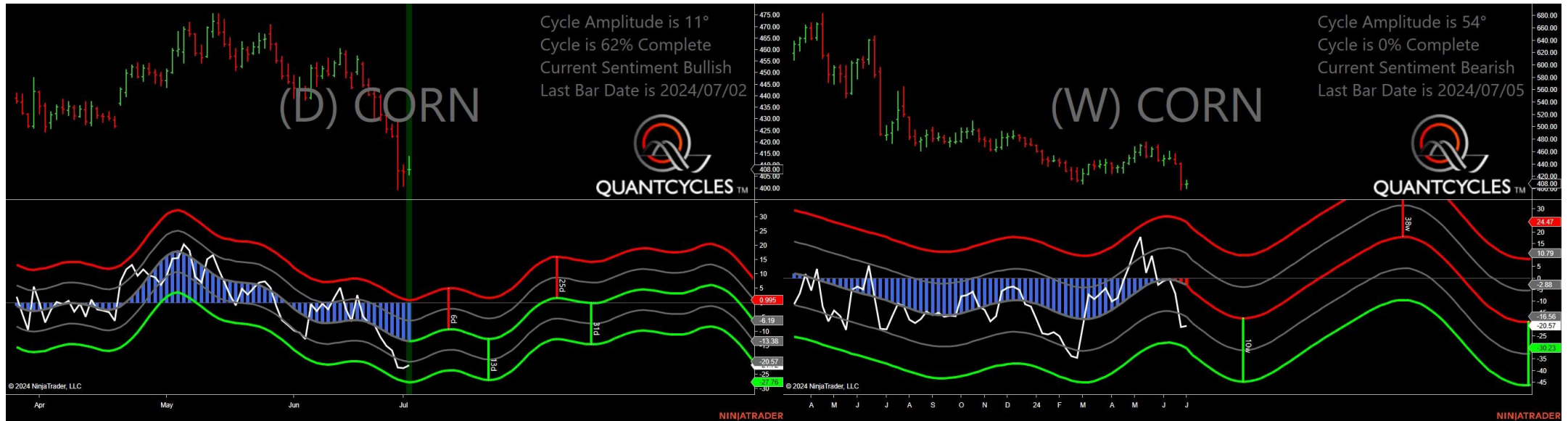
- Amplitude is 36° - Good
- Direction Accuracy is 50%
- Market is at Support Extreme - Expect market consolidation Between \$20.14 and \$19.93

Silver - Analysis Chart



- Amplitude is 19° - Weak
- Direction Accuracy is 0%
- Market is at Resistance Extreme - Expect market consolidation Between \$30.125 and \$29.815

Corn - Analysis Chart



- Amplitude is 11° - Weak
- Direction Accuracy is 50%
- Market is at Support Extreme - Expect market consolidation Between \$408 and \$405.75

Soybean Oil - Analysis Chart



- Amplitude is 11° - Weak
- Direction Accuracy is 0%
- Market is at Resistance Extreme - Expect market consolidation Between \$47.25 and \$47.04

Soybean Meal - Analysis Chart



- Amplitude is 35° - Good
- Direction Accuracy is 50%
- Market is at Support Extreme - Expect market consolidation Between \$349.8 and \$349.2

Oats - Analysis Chart



- Amplitude is 39° - Good
- Direction Accuracy is 50%
- Market is at Support Extreme - Expect market consolidation Between \$311 and \$307.5

Soybeans - Analysis Chart



- Amplitude is 22° - Good
- Direction Accuracy is 0%
- Market is at Resistance Extreme - Expect market consolidation Between \$1161.75 and \$1150.25

