



QUANTCYCLES

COMMODITIES

OPPORTUNITIES & EXTREMES

About This Document

- This document contains two cyclical market patterns based on the QuantCycles Cycle Analysis Software
- **Cycle Continuation Opportunity** – These are defined as a deviation of the forecast direction that extend to the upper or lower extremes. There is a high probability that the market will return to the forecast direction within a projected time frame. A Dual Opportunity has a higher probability of returning to the forecast direction than a Single Opportunity.
 - Always look for market commonality. For example, if you're looking at a DOW30 stock to buy, does the index look positive as well?
 - As the market approaches the cycle forecast turning point, the probability of the market following that direction decays. This is indicated by the "Cycle Percent Complete" note at the top of the chart, as well as predicted duration dates
 - At an Opportunity, a strong market may continue to go against the forecast trend, therefore, we recommend waiting for confirmation of the turning point before acting on it.
 - If the Market has not returned to the direction of the cycle by the minimum expected cycle duration date, consider the cycle incorrect.
- **Cycle Extreme** – These are defined as a deviation of the forecast direction, but with a lessor probability of return to the forecast direction. A Dual Extreme is a stronger Support / Resistance than a Single Extreme.
 - The Cycle Continuation Opportunity information above applies here as well, but can be utilized more to take profits than to consider for entry
 - Indicates that a market is at or near a Cycle Support or Resistance.
 - There is a high probability of a market stall.

Analysis Overview

- 3 Dual Extremes
- 5 Single Extremes
- 15 Analysis

Cycle Extremes

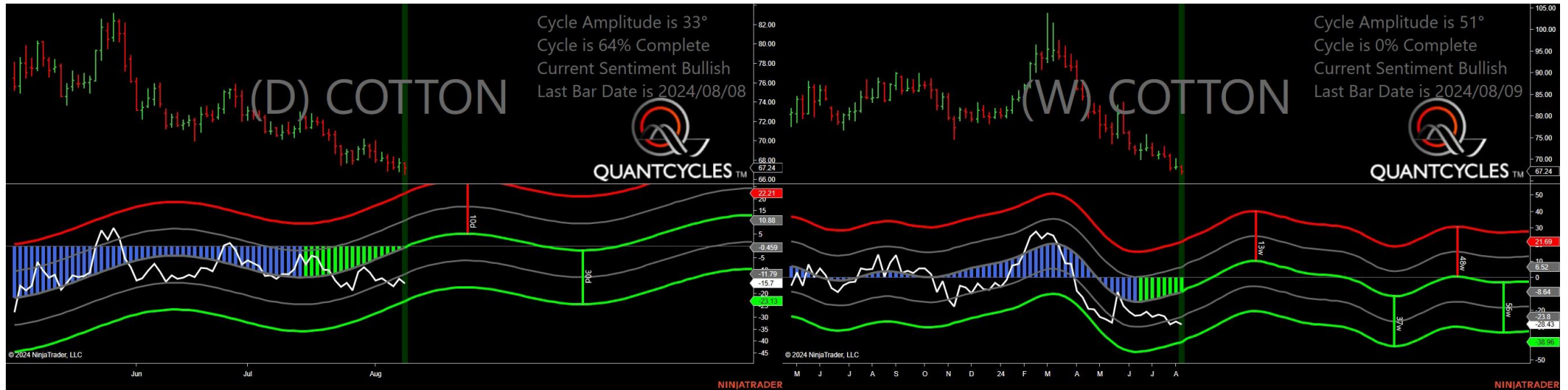
3 Dual Extremes

- CT - Cotton
- GC - Gold
- GF - Feeder Cattle

5 Single Extremes

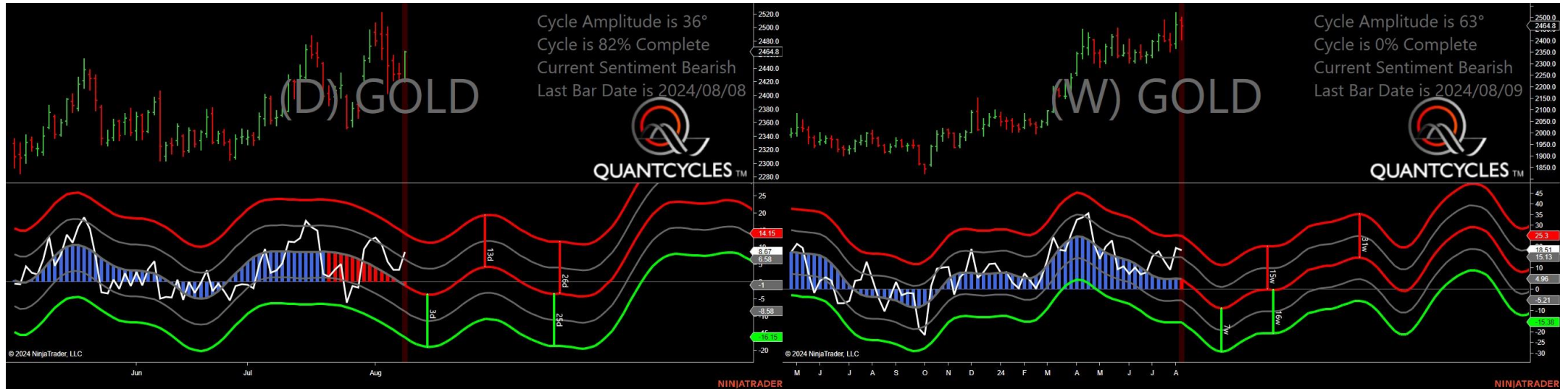
- CC - Cocoa
- HE - Live Hogs
- HG - Copper
- LE - Live Cattle
- ZL - Soybean Oil

Cotton - Dual Extreme



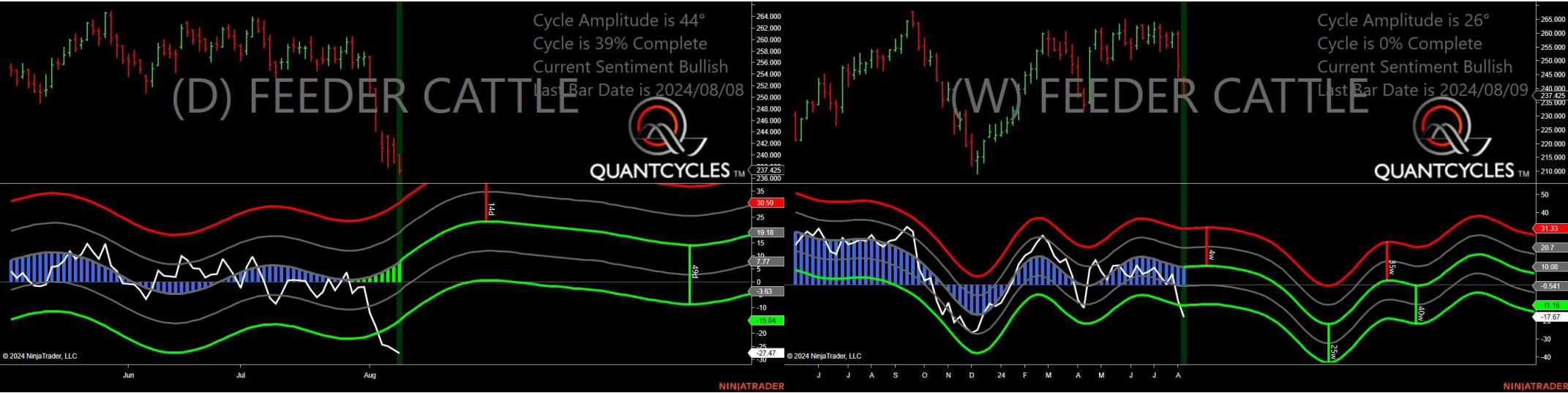
- Amplitude is 33° - Good
- Direction Accuracy is 50%
- Market is at Support Extreme - Expect market consolidation Between \$67.24 and \$66.55

Gold - Dual Extreme



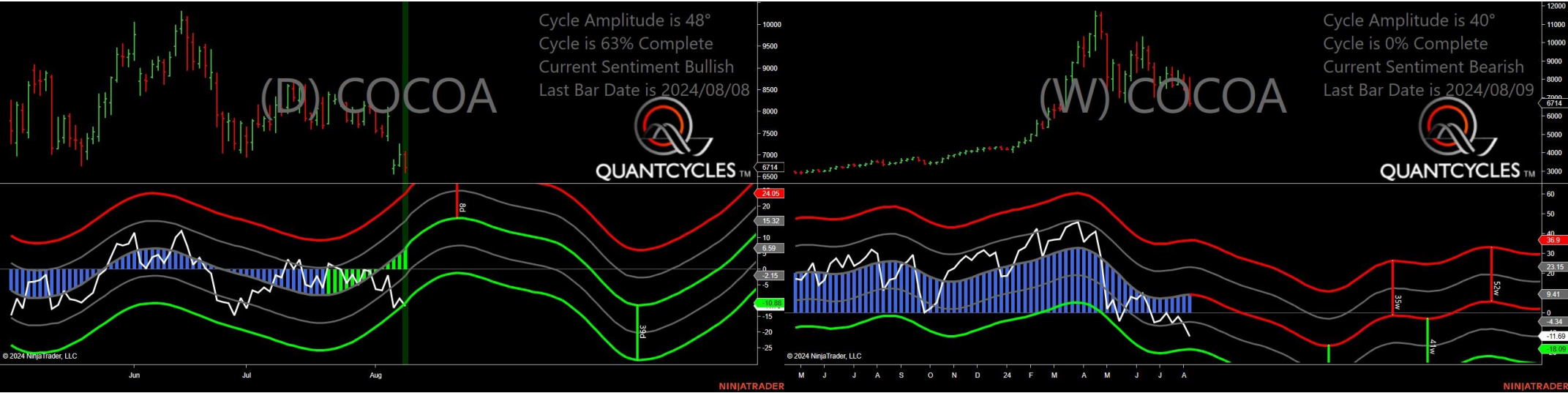
- Amplitude is 36° - Good
- Direction Accuracy is 0%
- Market is at Resistance Extreme - Expect market consolidation Between \$2465.8 and \$2464.8

Feeder Cattle - Dual Extreme



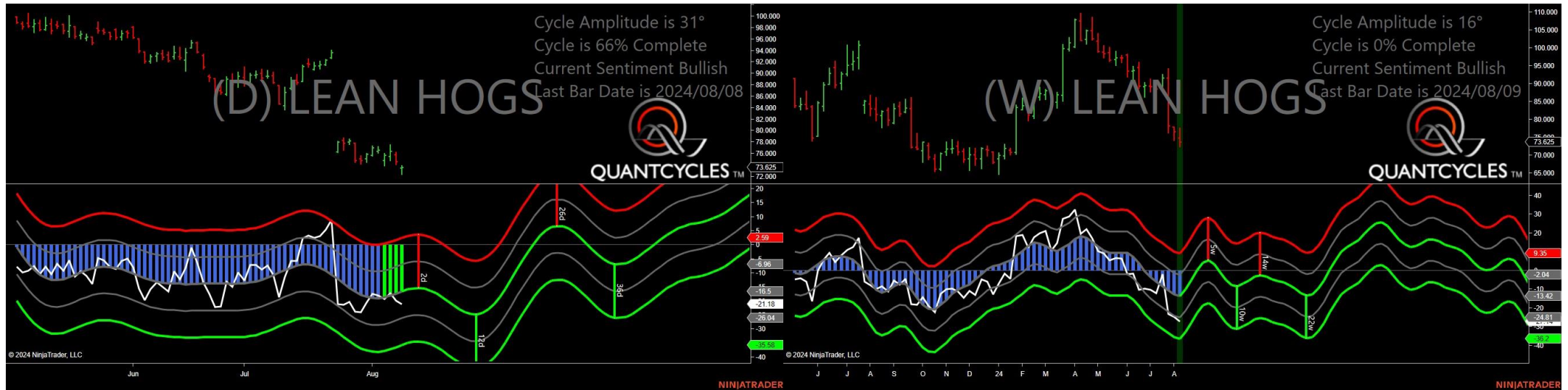
- Amplitude is 44° - Strong
- Direction Accuracy is 50%
- Market is at Support Extreme - Expect market consolidation Between \$237.425 and \$236.75

Cocoa - Single Daily Extreme



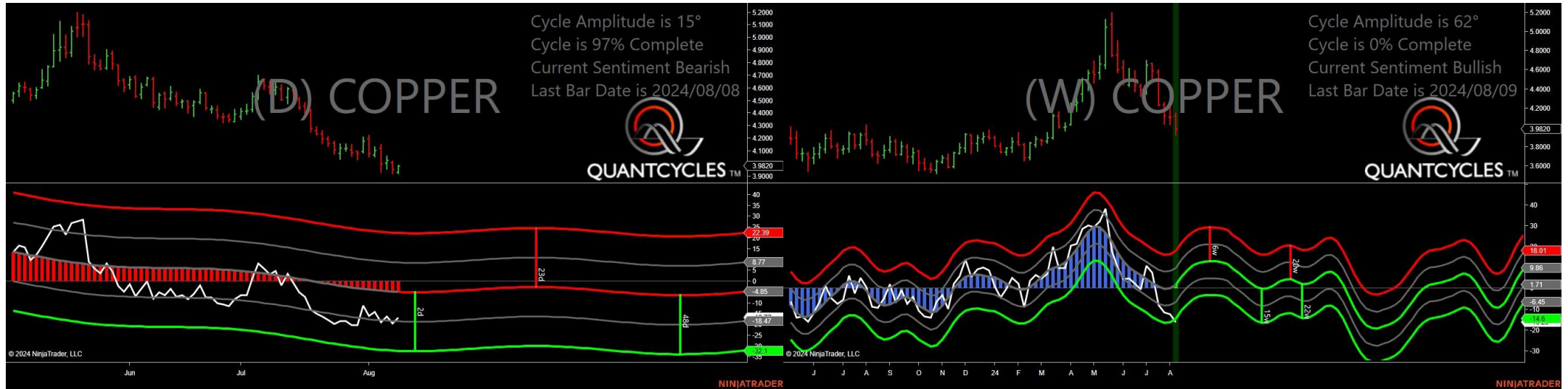
- Amplitude is 48° - Strong
- Direction Accuracy is 50%
- Market is at Support Extreme - Expect market consolidation Between \$6714 and \$6594

Live Hogs - Single Weekly Extreme



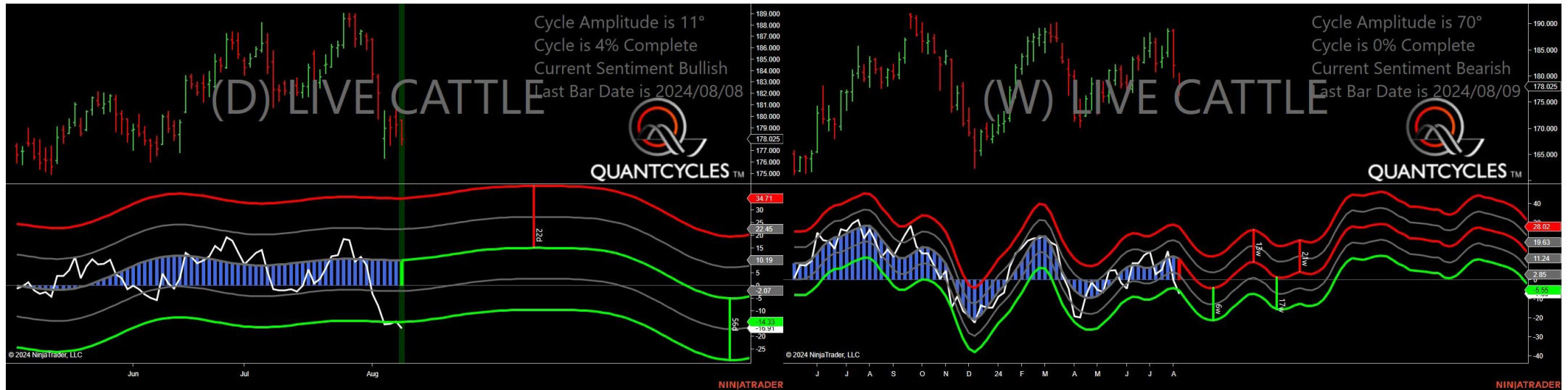
- Amplitude is 31° - Good
- Direction Accuracy is 50%
- Market is at Support Extreme - Expect market consolidation Between \$73.5 and \$72.35

Copper - Single Weekly Extreme



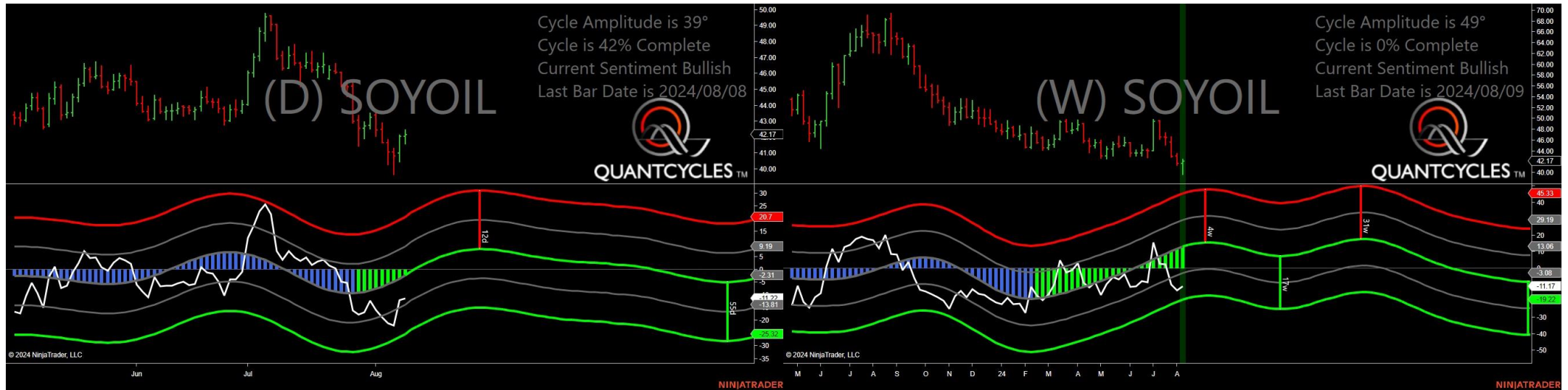
- Amplitude is 15° - Weak
- Direction Accuracy is 0%
- Market is at Resistance Extreme - Expect market consolidation Between \$3.984 and \$3.982

Live Cattle - Single Daily Extreme



- Amplitude is 11° - Weak
- Direction Accuracy is 50%
- Market is at Support Extreme - Expect market consolidation Between \$178.025 and \$177.5

Soybean Oil - Single Weekly Extreme



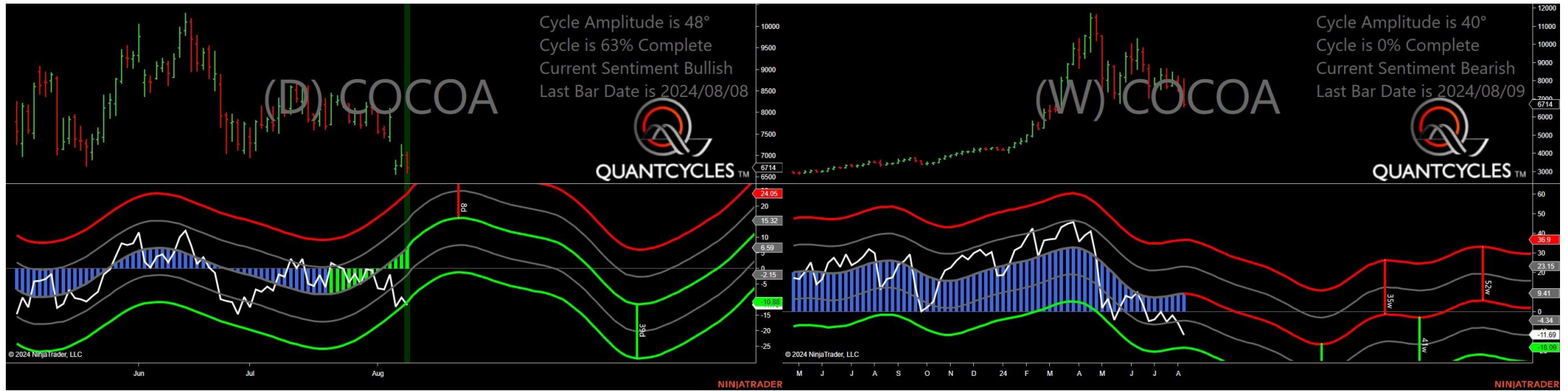
- Amplitude is 39° - Good
- Direction Accuracy is 50%
- Market is at Support Extreme - Expect market consolidation Between \$42.07 and \$41.6

Analysis Charts

15 Charts

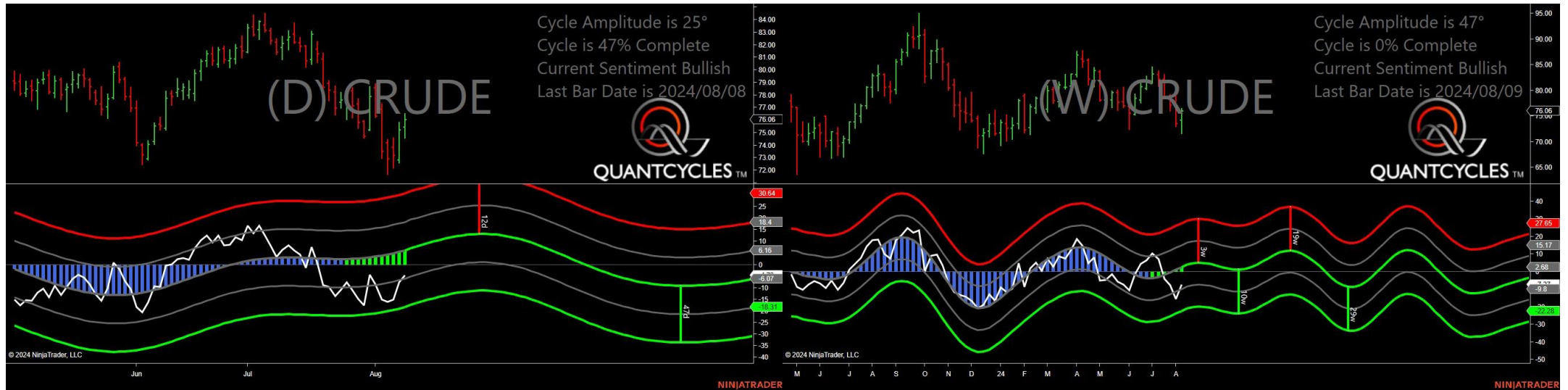
- CL - Crude Oil
- HO - Heating Oil
- KC - Coffee
- NG - Natural Gas
- OJ - Oranje Juice
- PA - Palladium
- PL - Platinum
- RB - Unleaded Gas
- SB - Sugar
- SI - Silver
- ZC - Corn
- ZM - Soybean Meal
- ZO - Oats
- ZS - Soybeans
- ZW - Wheat

Cocoa - Analysis Chart



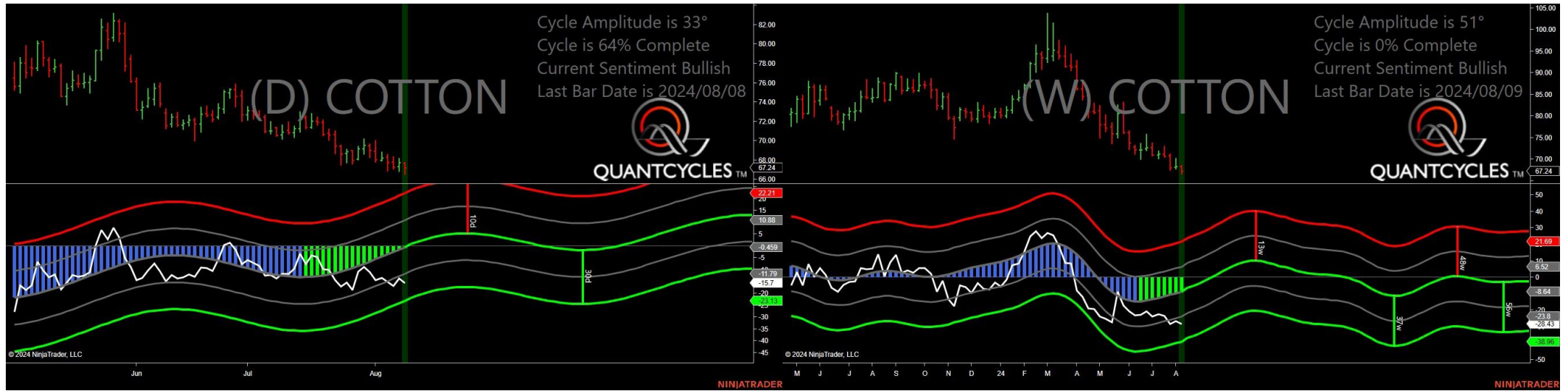
- Amplitude is 48° - Strong
- Direction Accuracy is 50%
- Market is at Support Extreme - Expect market consolidation Between \$6714 and \$6594

Crude Oil - Analysis Chart



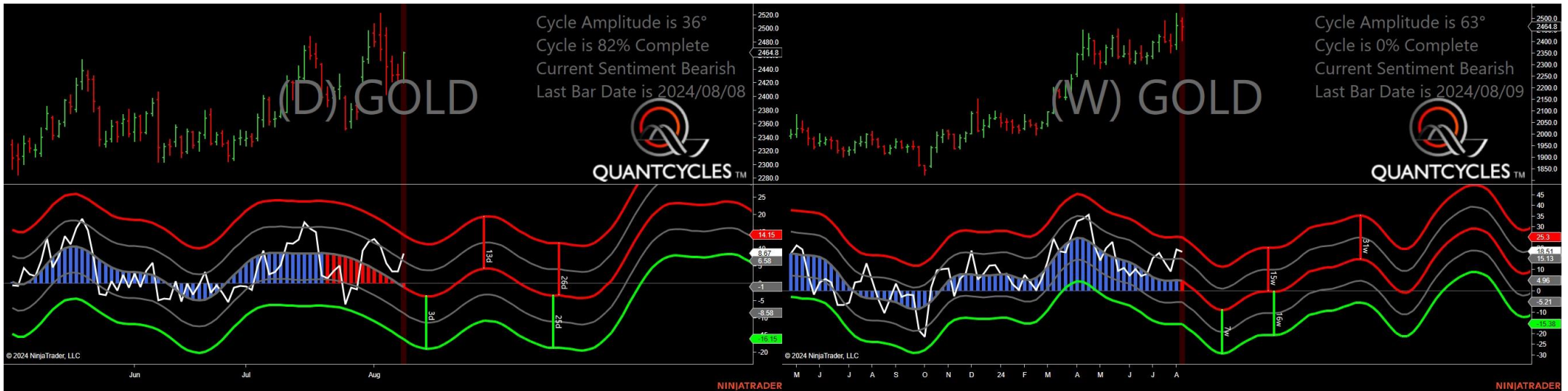
- Amplitude is 25° - Good
- Direction Accuracy is 50%
- Market is at Support Extreme - Expect market consolidation Between \$75.47 and \$74.59

Cotton - Analysis Chart



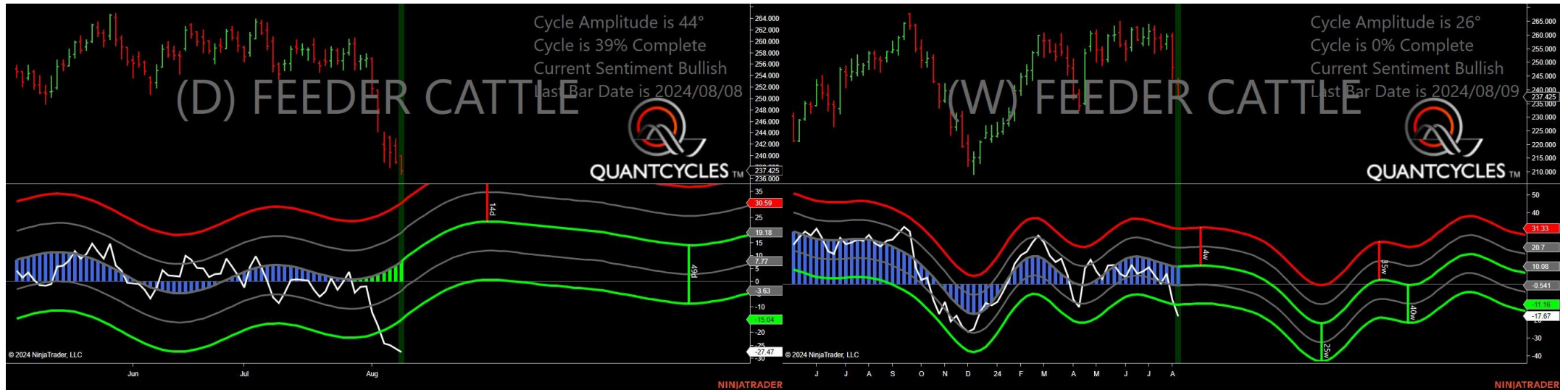
- Amplitude is 33° - Good
- Direction Accuracy is 50%
- Market is at Support Extreme - Expect market consolidation Between \$67.24 and \$66.55

Gold - Analysis Chart



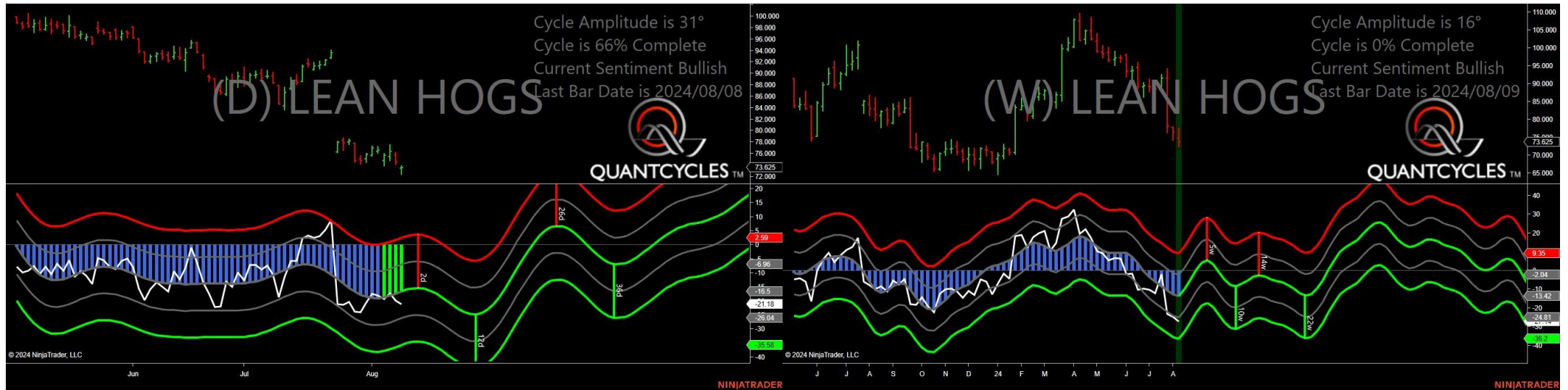
- Amplitude is 36° - Good
- Direction Accuracy is 0%
- Market is at Resistance Extreme - Expect market consolidation Between \$2465.8 and \$2464.8

Feeder Cattle - Analysis Chart



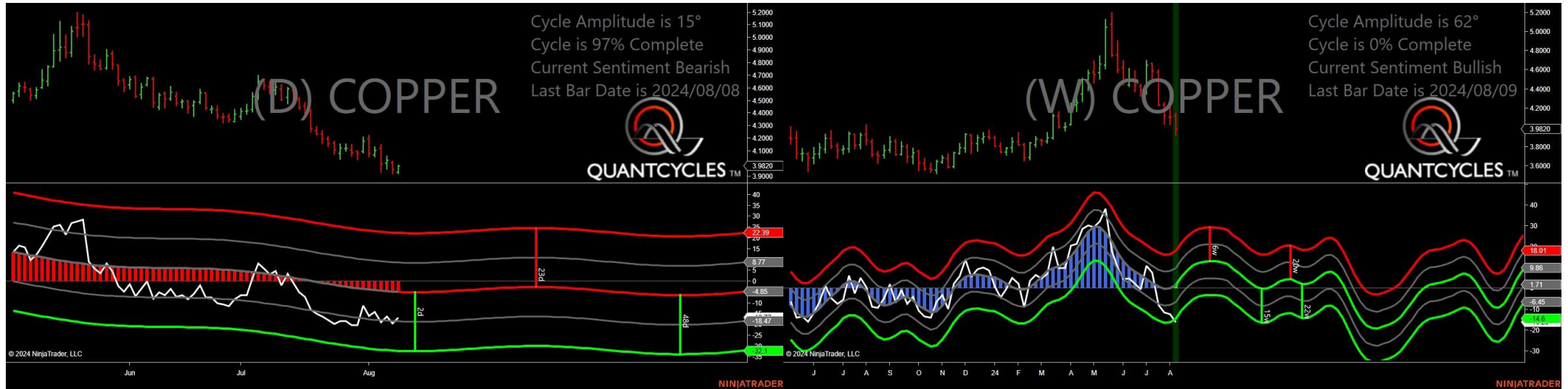
- Amplitude is 44° - Strong
- Direction Accuracy is 50%
- Market is at Support Extreme - Expect market consolidation Between \$237.425 and \$236.75

Live Hogs - Analysis Chart



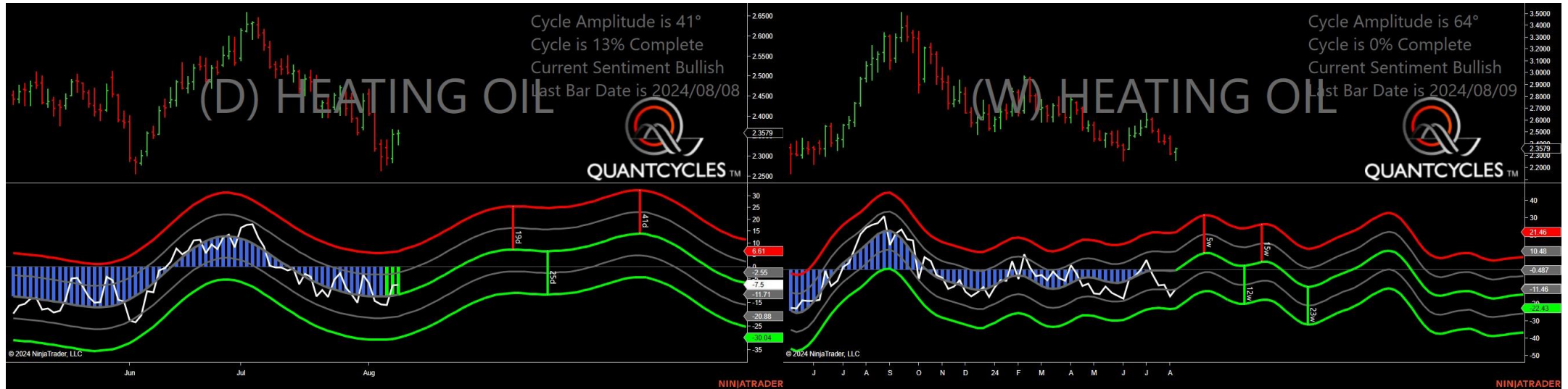
- Amplitude is 31° - Good
- Direction Accuracy is 50%
- Market is at Support Extreme - Expect market consolidation Between \$73.5 and \$72.35

Copper - Analysis Chart



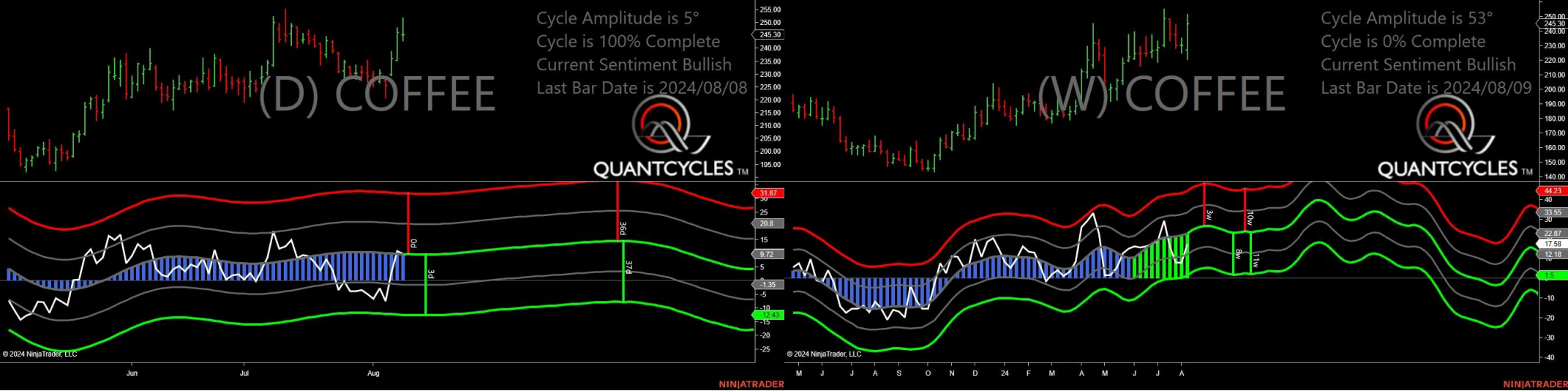
- Amplitude is 15° - Weak
- Direction Accuracy is 0%
- Market is at Resistance Extreme - Expect market consolidation Between \$3.984 and \$3.982

Heating Oil - Analysis Chart



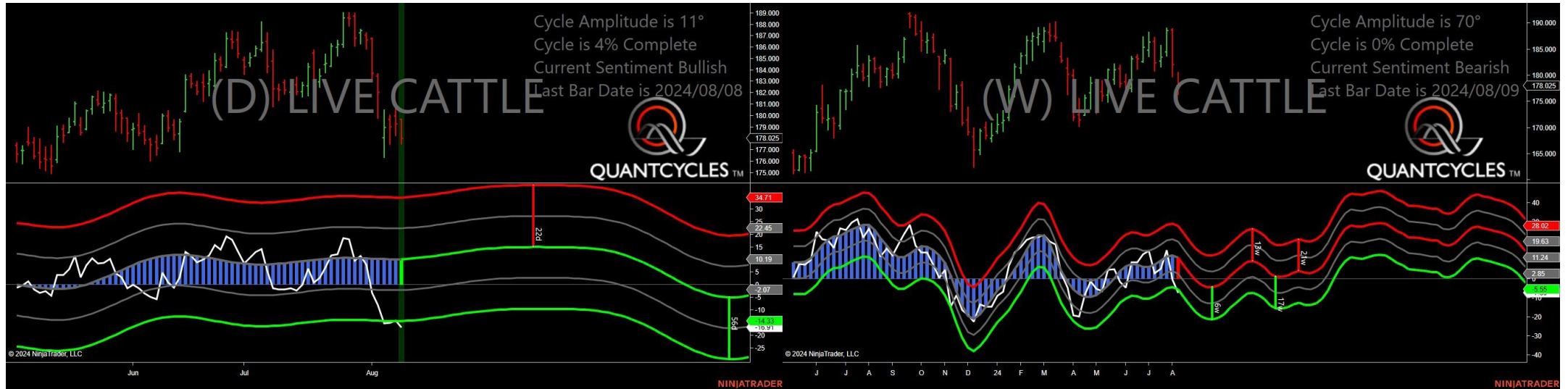
- Amplitude is 41° - Strong
- Direction Accuracy is 50%
- Market is at Support Extreme - Expect market consolidation Between \$2.3569 and \$2.329

Coffee - Analysis Chart



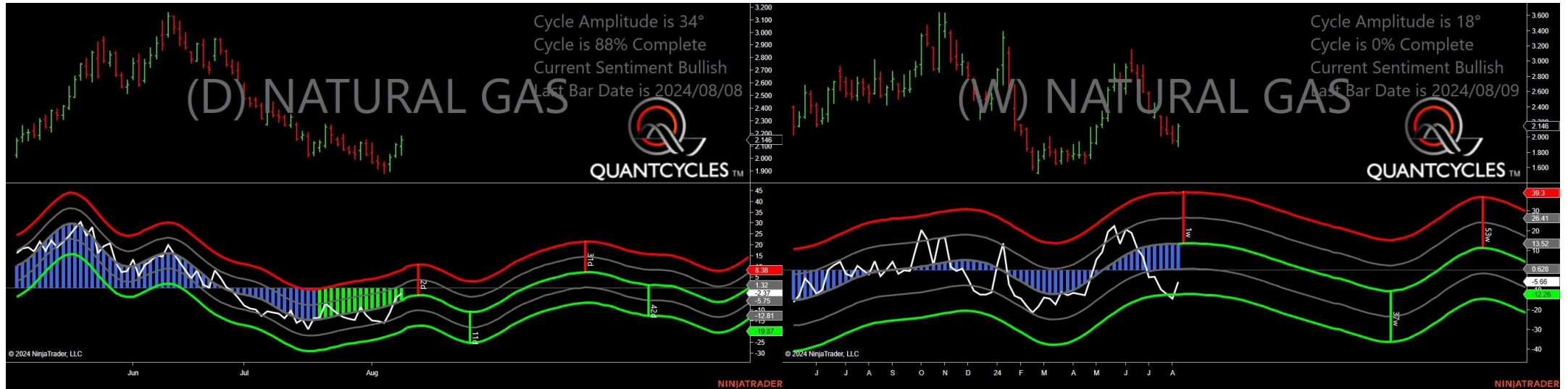
- Amplitude is 5° - Weak
- Direction Accuracy is 50%
- Market is at Support Extreme - Expect market consolidation Between \$245.25 and \$243.1

Live Cattle - Analysis Chart



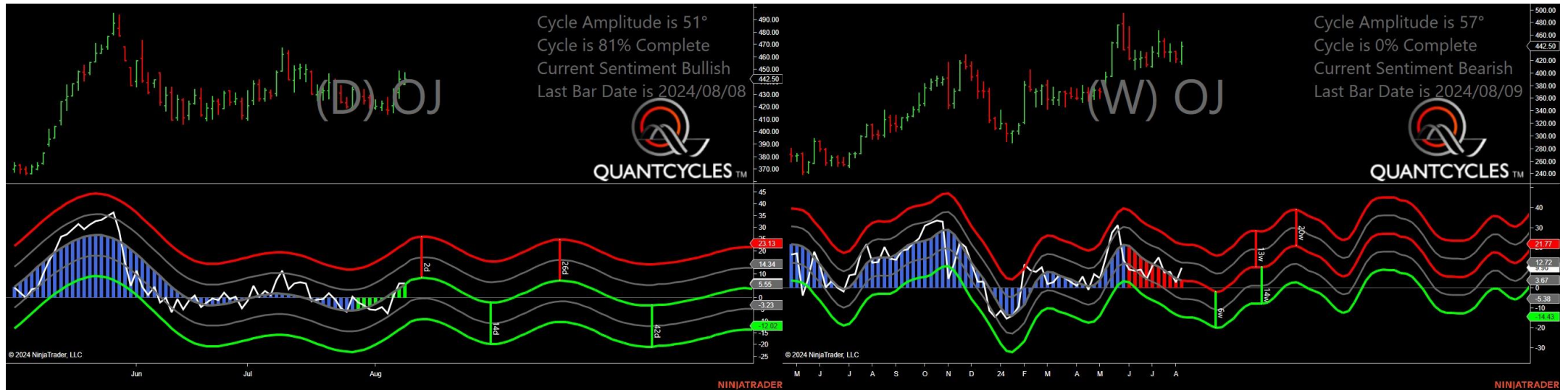
- Amplitude is 11° - Weak
- Direction Accuracy is 50%
- Market is at Support Extreme - Expect market consolidation Between \$178.025 and \$177.5

Natural Gas - Analysis Chart



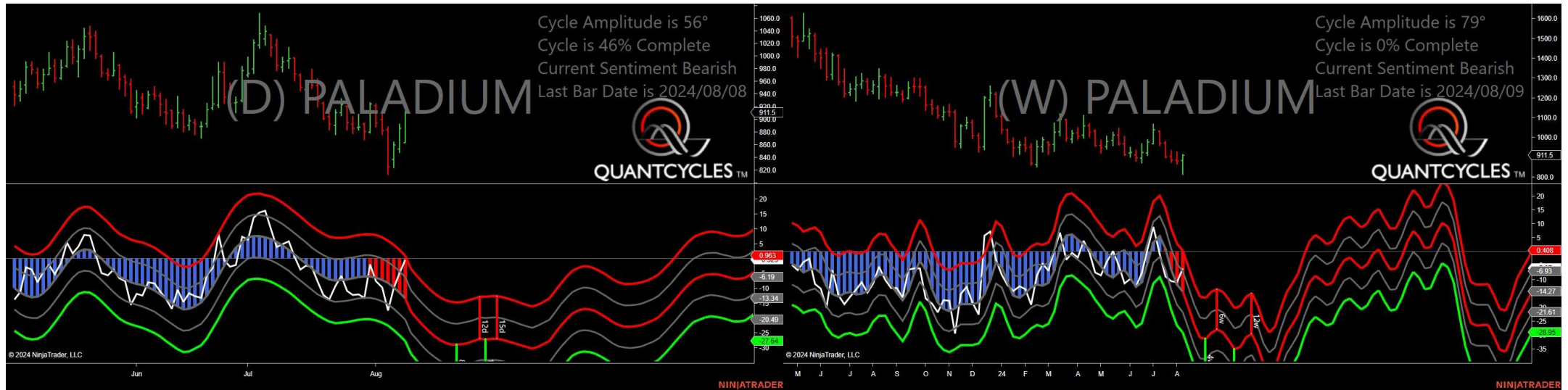
- Amplitude is 34° - Good
- Direction Accuracy is 50%
- Market is at Support Extreme - Expect market consolidation Between \$2.1 and \$2.028

Oranje Juice - Analysis Chart



- Amplitude is 51° - Strong
- Direction Accuracy is 50%
- Market is at Support Extreme - Expect market consolidation Between \$438.05 and \$438.05

Palladium - Analysis Chart



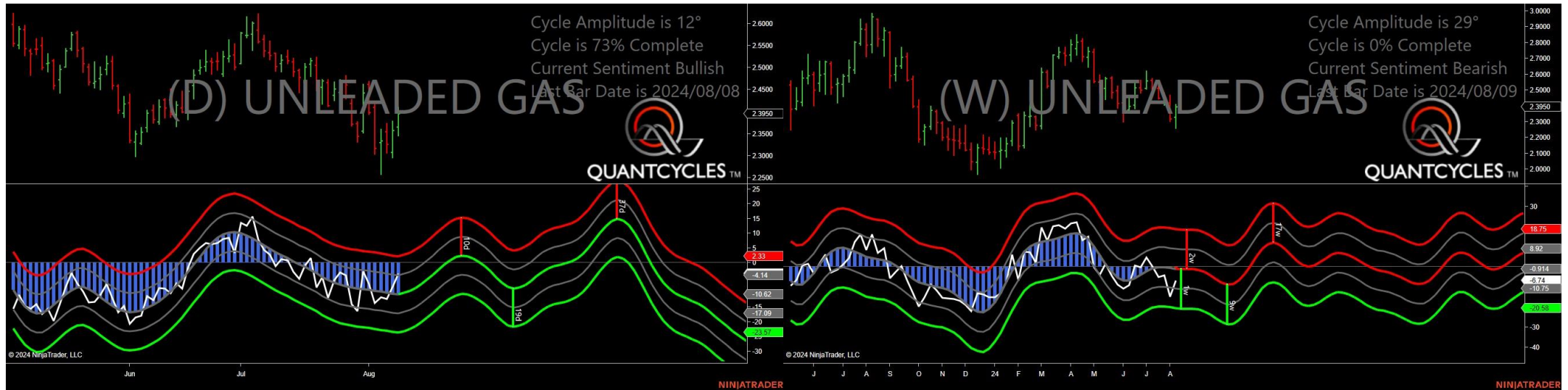
- Amplitude is 56° - Strong
- Direction Accuracy is 0%
- Market is at Resistance Extreme - Expect market consolidation Between \$913 and \$911.5

Platinum - Analysis Chart



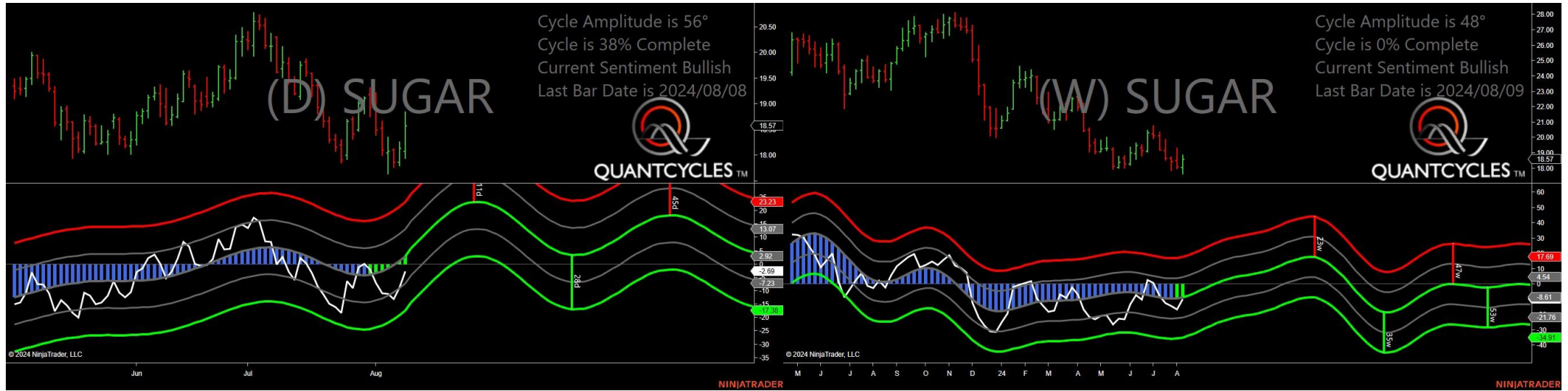
- Amplitude is 7° - Weak
- Direction Accuracy is 0%
- Market is at Resistance Extreme - Expect market consolidation Between \$944.5 and \$942.2

Unleaded Gas - Analysis Chart



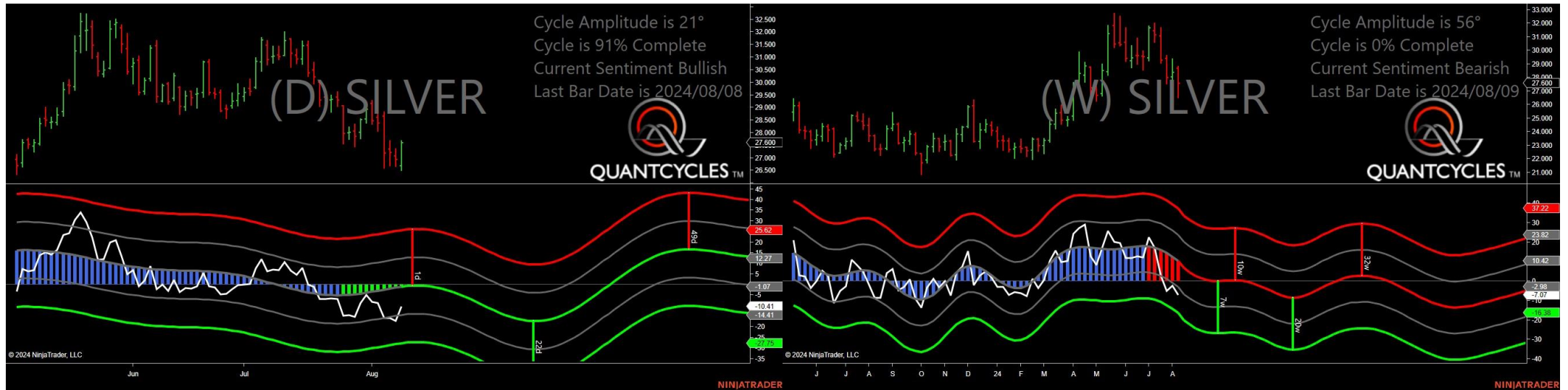
- Amplitude is 12° - Weak
- Direction Accuracy is 50%
- Market is at Support Extreme - Expect market consolidation Between \$2.365 and \$2.3458

Sugar - Analysis Chart



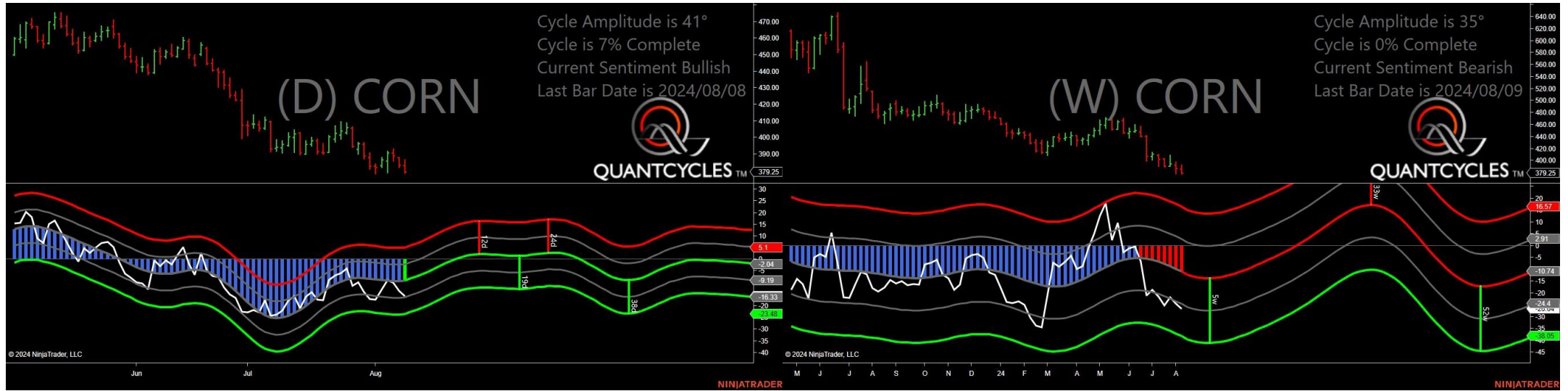
- Amplitude is 56° - Strong
- Direction Accuracy is 50%
- Market is at Support Extreme - Expect market consolidation Between \$18.08 and \$17.95

Silver - Analysis Chart



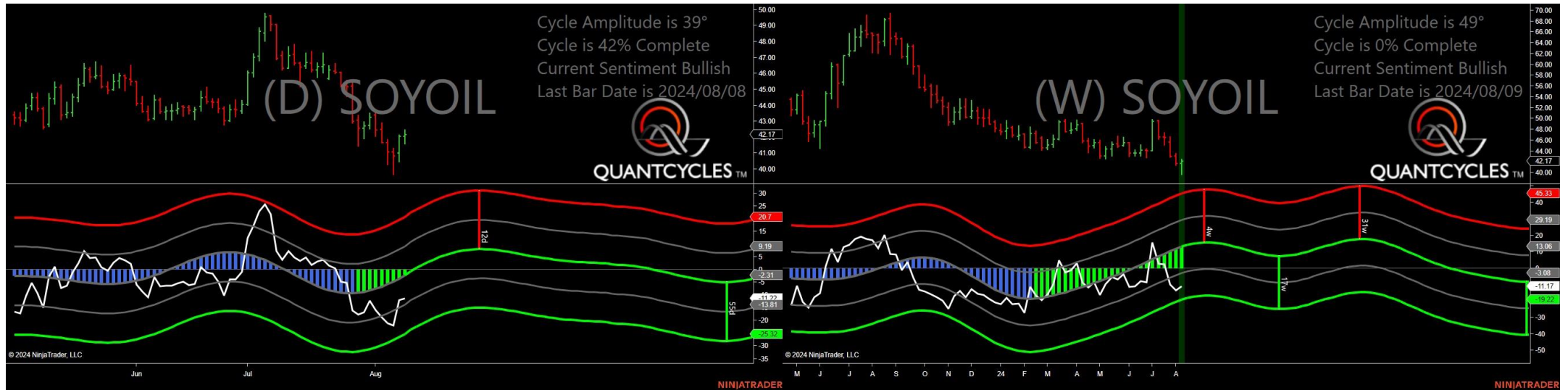
- Amplitude is 21° - Good
- Direction Accuracy is 50%
- Market is at Support Extreme - Expect market consolidation Between \$26.695 and \$26.505

Corn - Analysis Chart



- Amplitude is 41° - Strong
- Direction Accuracy is 50%
- Market is at Support Extreme - Expect market consolidation Between \$379.25 and \$378.5

Soybean Oil - Analysis Chart



- Amplitude is 39° - Good
- Direction Accuracy is 50%
- Market is at Support Extreme - Expect market consolidation Between \$42.07 and \$41.6

Soybean Meal - Analysis Chart



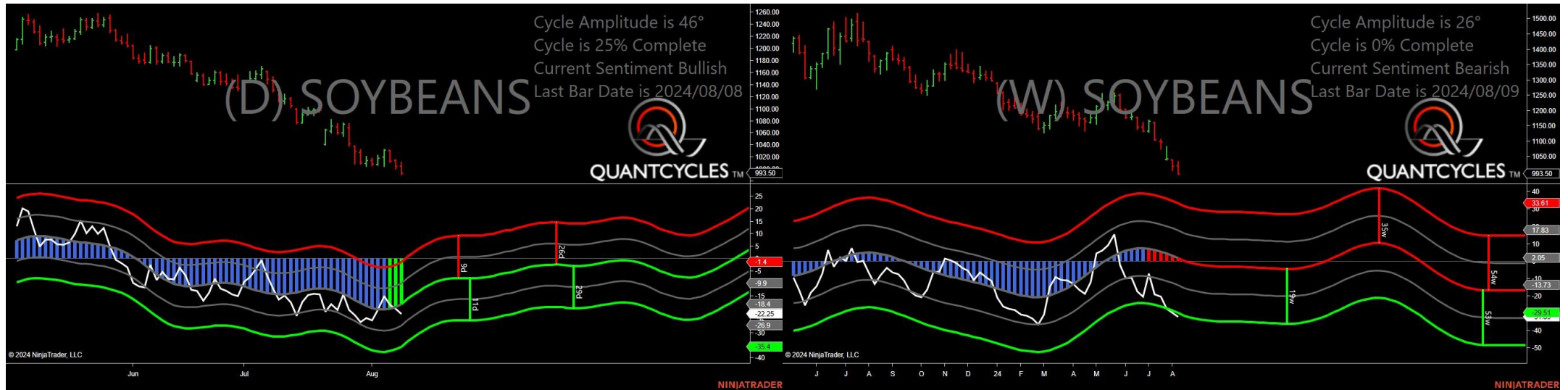
- Amplitude is 12° - Weak
- Direction Accuracy is 50%
- Market is at Support Extreme - Expect market consolidation Between \$319.5 and \$318.9

Oats - Analysis Chart



- Amplitude is 33° - Good
- Direction Accuracy is 50%
- Market is at Support Extreme - Expect market consolidation Between \$329.5 and \$326.75

Soybeans - Analysis Chart



Wheat - Analysis Chart



- Amplitude is 25° - Good
- Direction Accuracy is 50%
- Market is at Support Extreme - Expect market consolidation Between \$537.5 and \$532.5