



QUANTCYCLES

COMMODITIES

OPPORTUNITIES & EXTREMES

About This Document

- This document contains two cyclical market patterns based on the QuantCycles Cycle Analysis Software
- **Cycle Continuation Opportunity** – These are defined as a deviation of the forecast direction that extend to the upper or lower extremes. There is a high probability that the market will return to the forecast direction within a projected time frame. A Dual Opportunity has a higher probability of returning to the forecast direction than a Single Opportunity.
 - Always look for market commonality. For example, if you're looking at a DOW30 stock to buy, does the index look positive as well?
 - As the market approaches the cycle forecast turning point, the probability of the market following that direction decays. This is indicated by the "Cycle Percent Complete" note at the top of the chart, as well as predicted duration dates
 - At an Opportunity, a strong market may continue to go against the forecast trend, therefore, we recommend waiting for confirmation of the turning point before acting on it.
 - If the Market has not returned to the direction of the cycle by the minimum expected cycle duration date, consider the cycle incorrect.
- **Cycle Extreme** – These are defined as a deviation of the forecast direction, but with a lessor probability of return to the forecast direction. A Dual Extreme is a stronger Support / Resistance than a Single Extreme.
 - The Cycle Continuation Opportunity information above applies here as well, but can be utilized more to take profits than to consider for entry
 - Indicates that a market is at or near a Cycle Support or Resistance.
 - There is a high probability of a market stall.

Analysis Overview

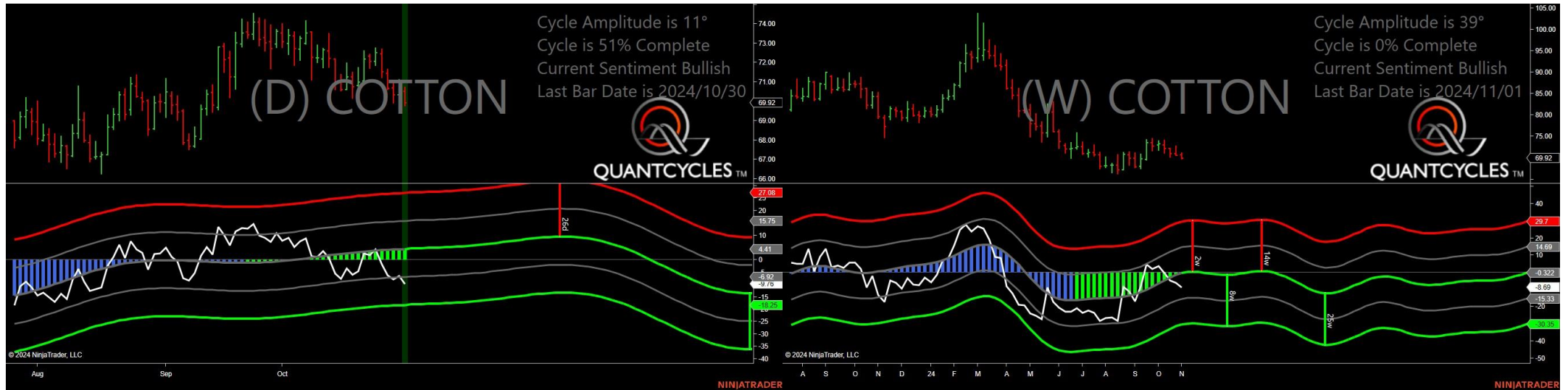
- 4 Single Extremes
- 19 Analysis

Cycle Extremes

4 Single Extremes

- CT - Cotton
- GC - Gold
- GF - Feeder Cattle
- ZM - Soybean Meal

Cotton - Single Daily Extreme



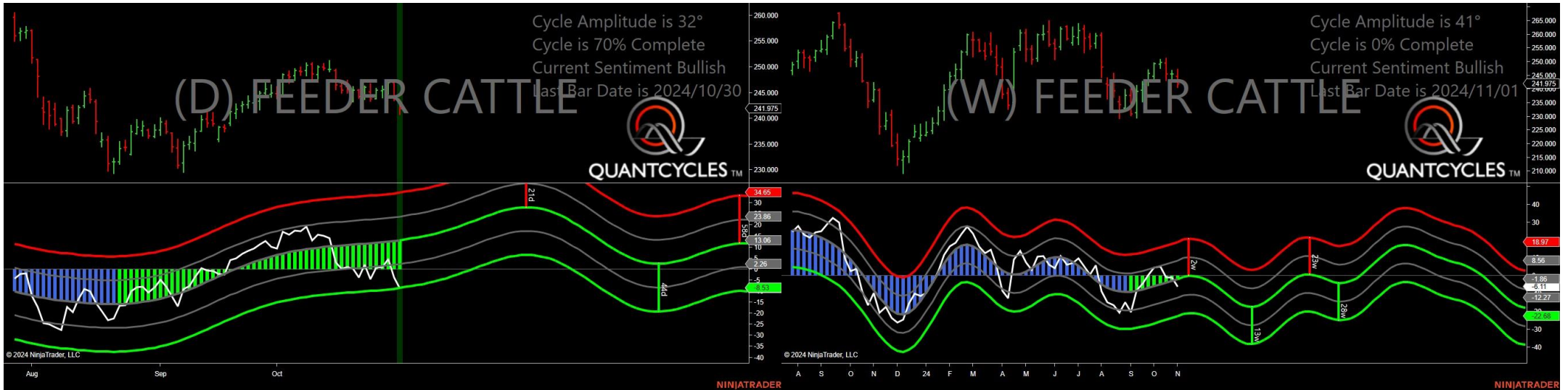
- Amplitude is 11° - Weak
- Direction Accuracy is 50%
- Market is at Support Extreme - Expect market consolidation Between \$69.92 and \$69.78

Gold - Single Weekly Extreme



- Amplitude is 36° - Good
- Direction Accuracy is 50%
- Market is at Support Extreme - Expect market consolidation Between \$2786.9 and \$2782.4

Feeder Cattle - Single Daily Extreme



- Amplitude is 32° - Good
- Direction Accuracy is 50%
- Market is at Support Extreme - Expect market consolidation Between \$241.975 and \$240.775

Soybean Meal - Single Daily Extreme



- Amplitude is 40° - Good
- Direction Accuracy is 50%
- Market is at Support Extreme - Expect market consolidation Between \$301.6 and \$300.5

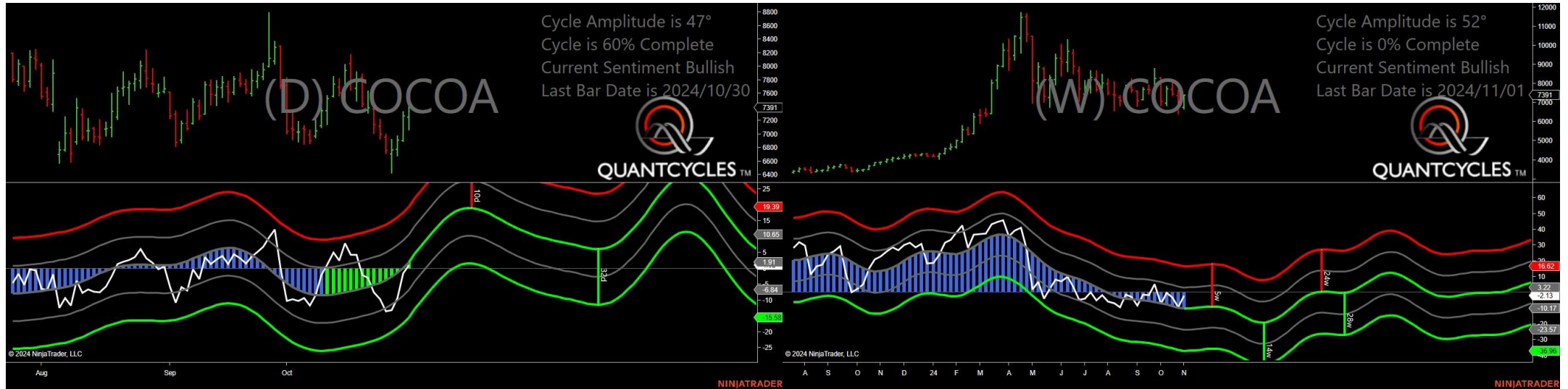
Analysis Charts

19 Charts

- CC - Cocoa
- CL - Crude Oil
- HE - Live Hogs
- HG - Copper
- HO - Heating Oil
- KC - Coffee
- LE - Live Cattle
- NG - Natural Gas
- OJ - Oranje Juice
- PA - Palladium
- PL - Platinum
- RB - Unleaded Gas
- SB - Sugar
- SI - Silver
- ZC - Corn
- ZL - Soybean Oil
- ZO - Oats

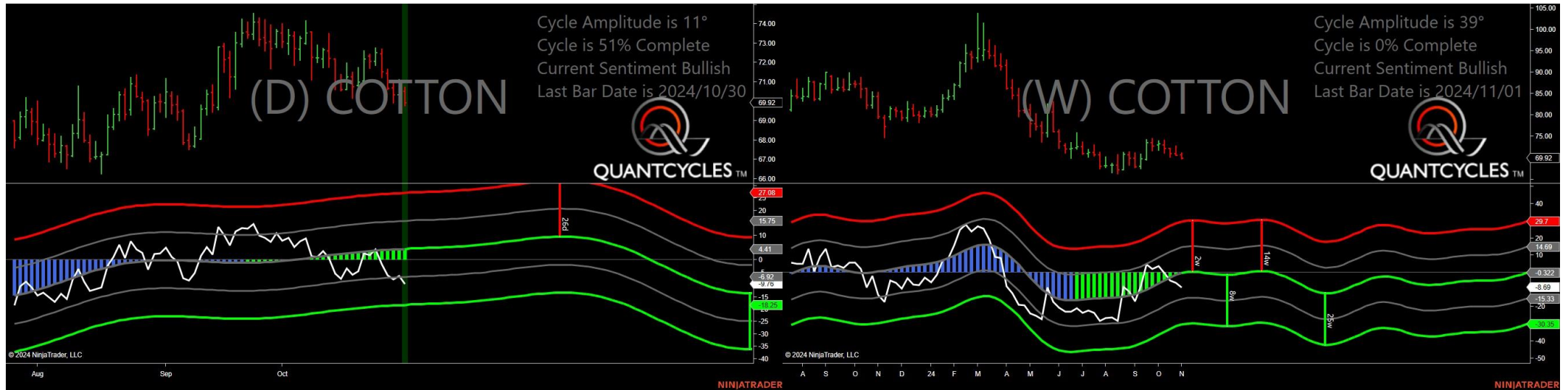
- ZS - Soybeans
- ZW - Wheat

Cocoa - Analysis Chart



- Amplitude is 47° - Strong
- Direction Accuracy is 50%
- Market is at Support Extreme - Expect market consolidation Between \$7253 and \$7066

Cotton - Analysis Chart



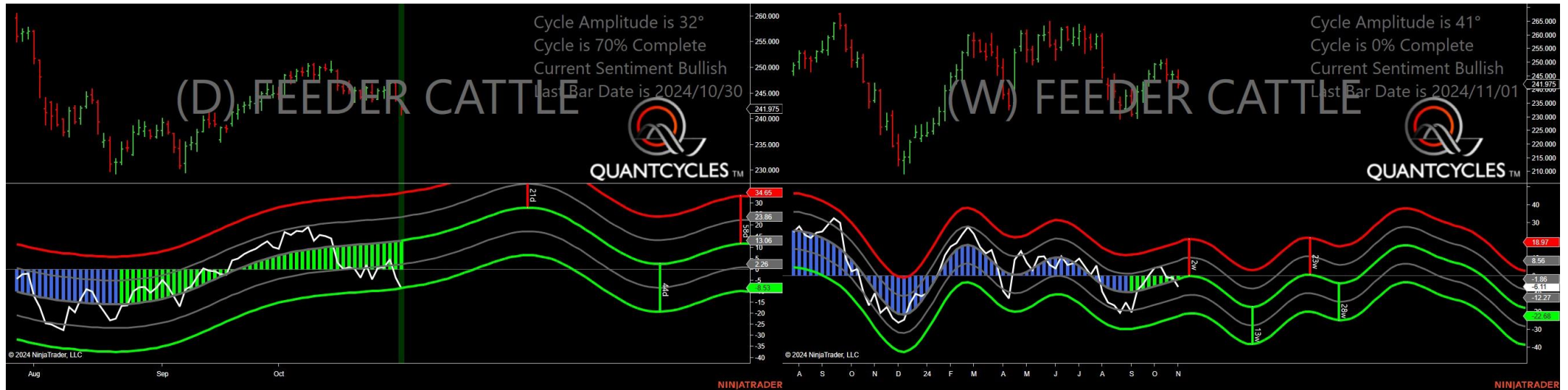
- Amplitude is 11° - Weak
- Direction Accuracy is 50%
- Market is at Support Extreme - Expect market consolidation Between \$69.92 and \$69.78

Gold - Analysis Chart



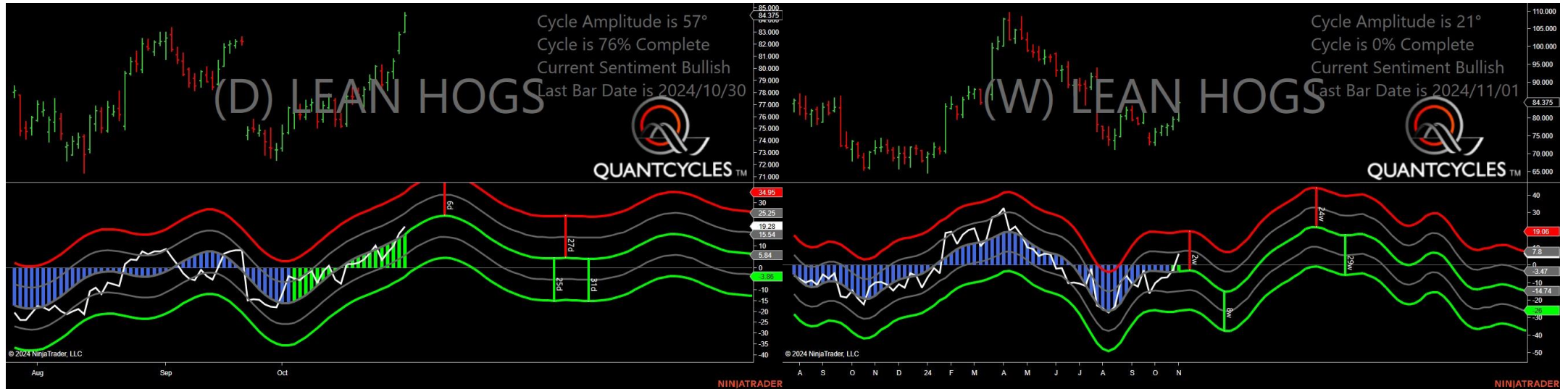
- Amplitude is 36° - Good
- Direction Accuracy is 50%
- Market is at Support Extreme - Expect market consolidation Between \$2786.9 and \$2782.4

Feeder Cattle - Analysis Chart



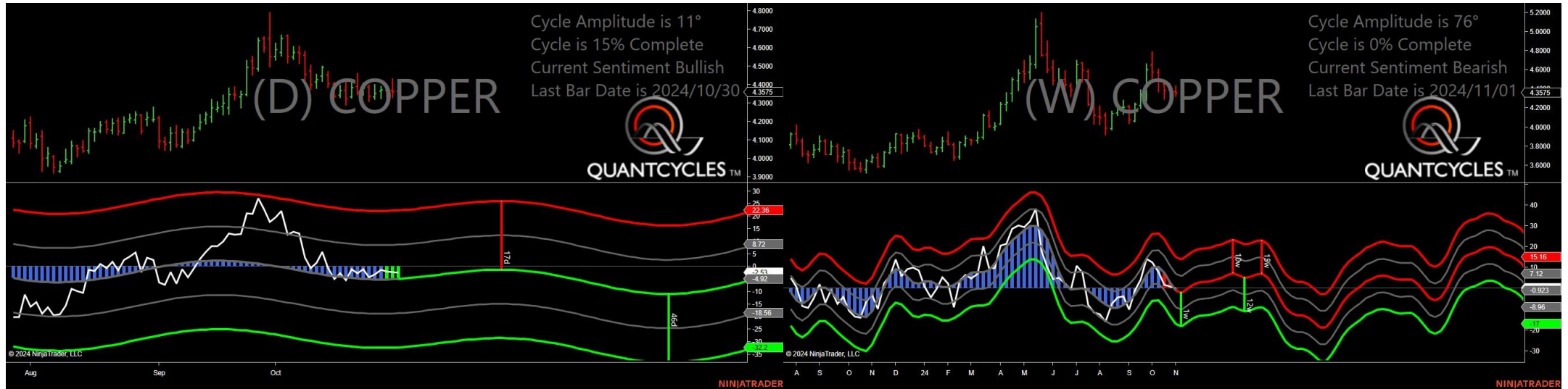
- Amplitude is 32° - Good
- Direction Accuracy is 50%
- Market is at Support Extreme - Expect market consolidation Between \$241.975 and \$240.775

Live Hogs - Analysis Chart



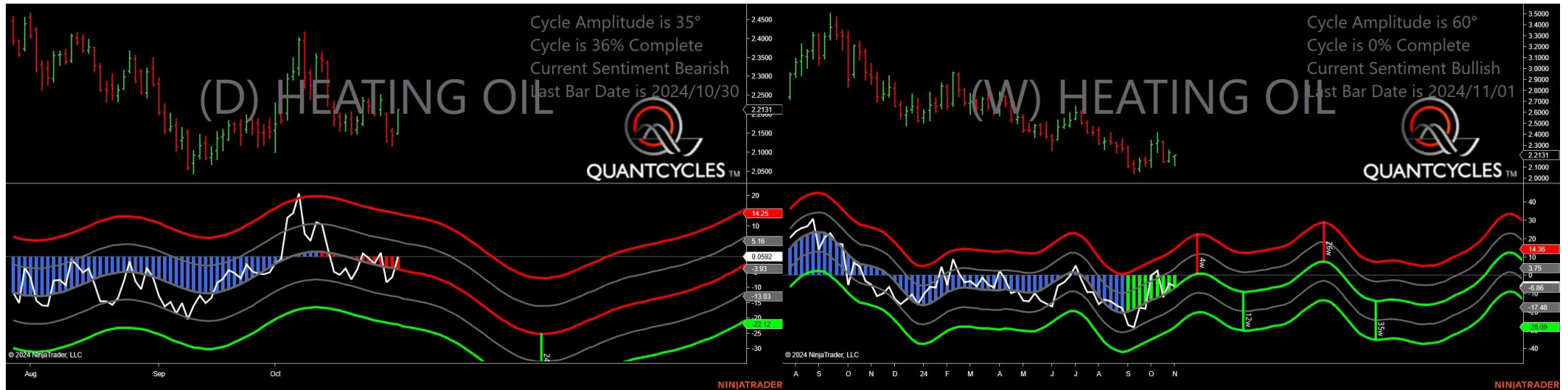
- Amplitude is 57° - Strong
- Direction Accuracy is 50%
- Market is at Support Extreme - Expect market consolidation Between \$83 and \$83

Copper - Analysis Chart



- Amplitude is 11° - Weak
- Direction Accuracy is 50%
- Market is at Support Extreme - Expect market consolidation Between \$4.3575 and \$4.3245

Heating Oil - Analysis Chart



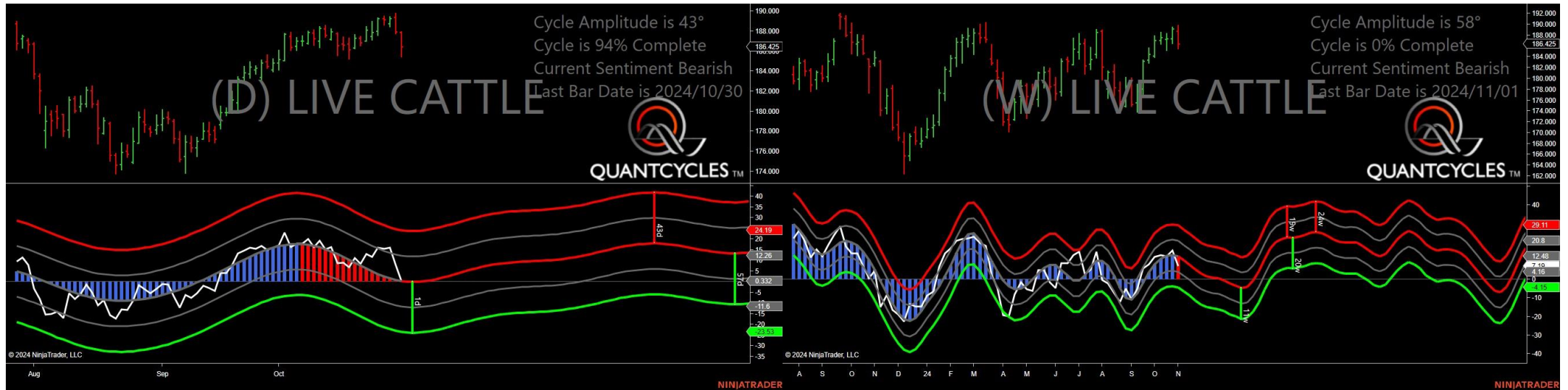
- Amplitude is 35° - Good
- Direction Accuracy is 0%
- Market is at Resistance Extreme - Expect market consolidation Between \$2.2131 and \$2.2131

Coffee - Analysis Chart



- Amplitude is 44° - Strong
- Direction Accuracy is 50%
- Market is at Support Extreme - Expect market consolidation Between \$248.7 and \$245.15

Live Cattle - Analysis Chart



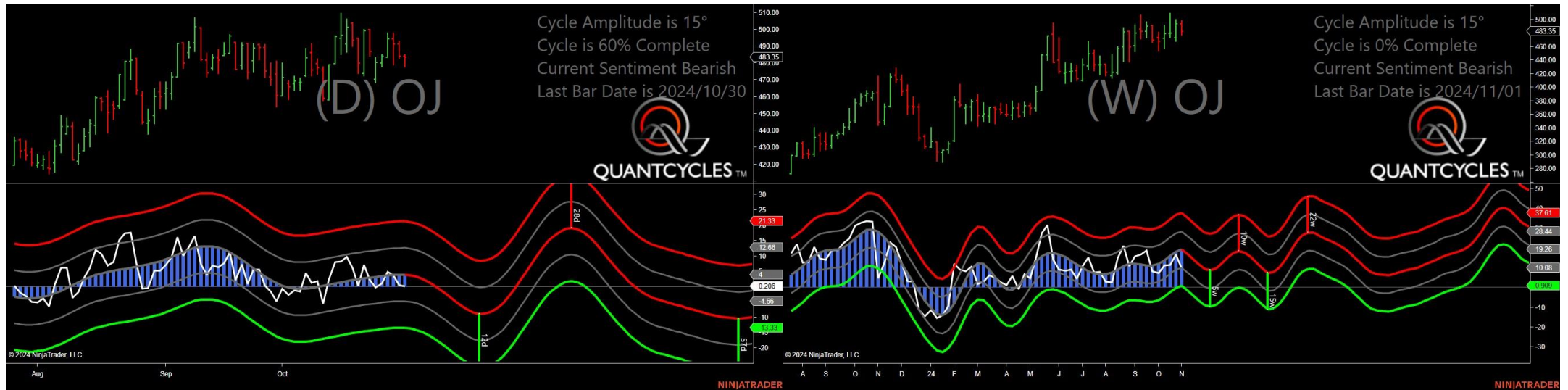
- Amplitude is 43° - Strong
- Direction Accuracy is 0%
- Market is at Resistance Extreme - Expect market consolidation Between \$187.925 and \$187.9

Natural Gas - Analysis Chart



- Amplitude is 52° - Strong
- Direction Accuracy is 50%
- Market is at Support Extreme - Expect market consolidation Between \$2.819 and \$2.77

Oranje Juice - Analysis Chart



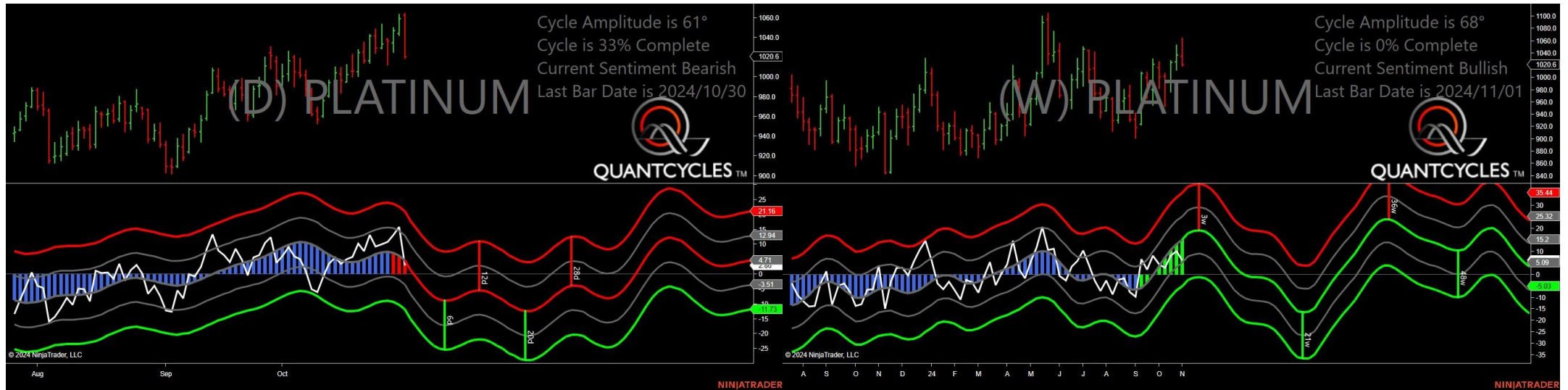
- Amplitude is 15° - Weak
- Direction Accuracy is 0%
- Market is at Resistance Extreme - Expect market consolidation Between \$485 and \$484.1

Palladium - Analysis Chart



- Amplitude is 44° - Strong
- Direction Accuracy is 0%
- Market is at Resistance Extreme - Expect market consolidation Between \$1220 and \$1217.5

Platinum - Analysis Chart



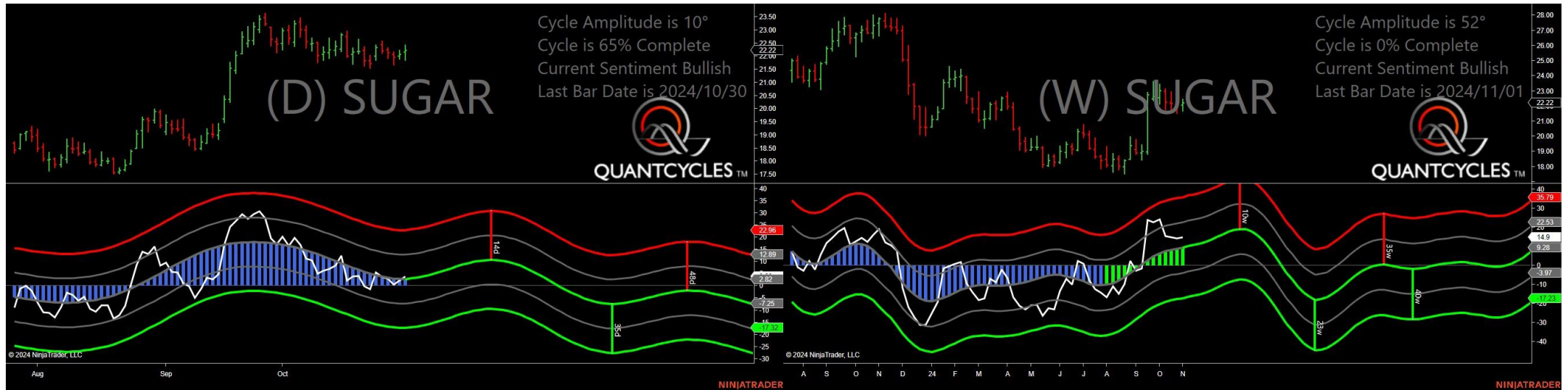
- Amplitude is 61° - Strong
- Direction Accuracy is 0%
- Market is at Resistance Extreme - Expect market consolidation Between \$1064.6 and \$1062.7

Unleaded Gas - Analysis Chart



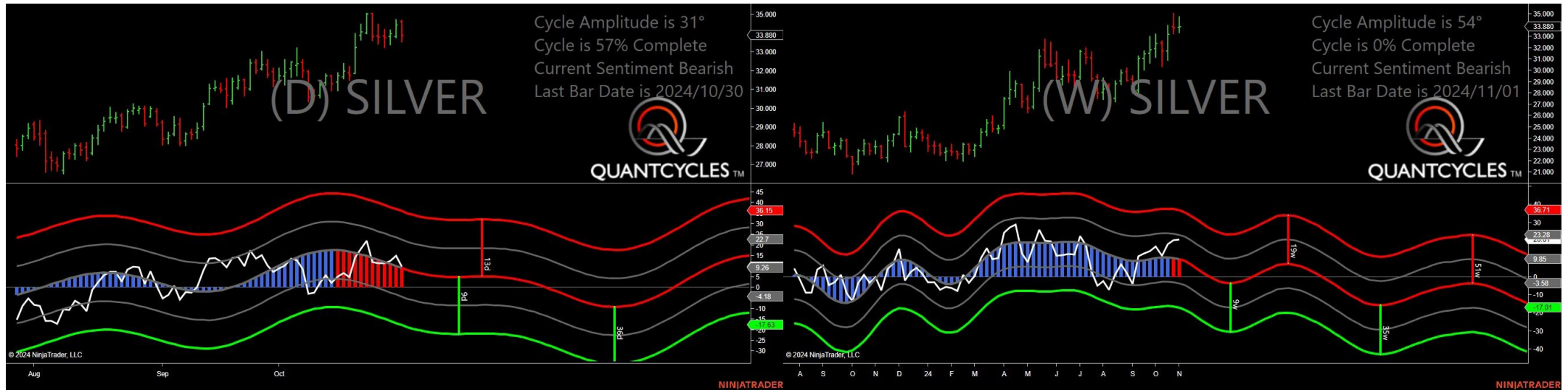
- Amplitude is 74° - Strong
- Direction Accuracy is 0%
- Market is at Resistance Extreme - Expect market consolidation Between \$1.9728 and \$1.9703

Sugar - Analysis Chart



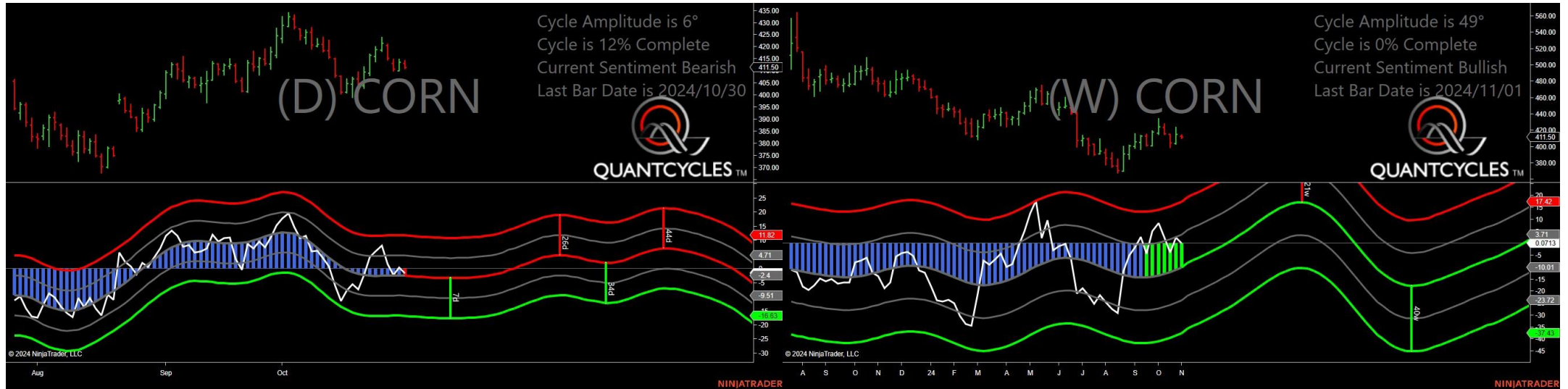
- Amplitude is 10° - Weak
- Direction Accuracy is 50%
- Market is at Support Extreme - Expect market consolidation Between \$22.16 and \$21.86

Silver - Analysis Chart



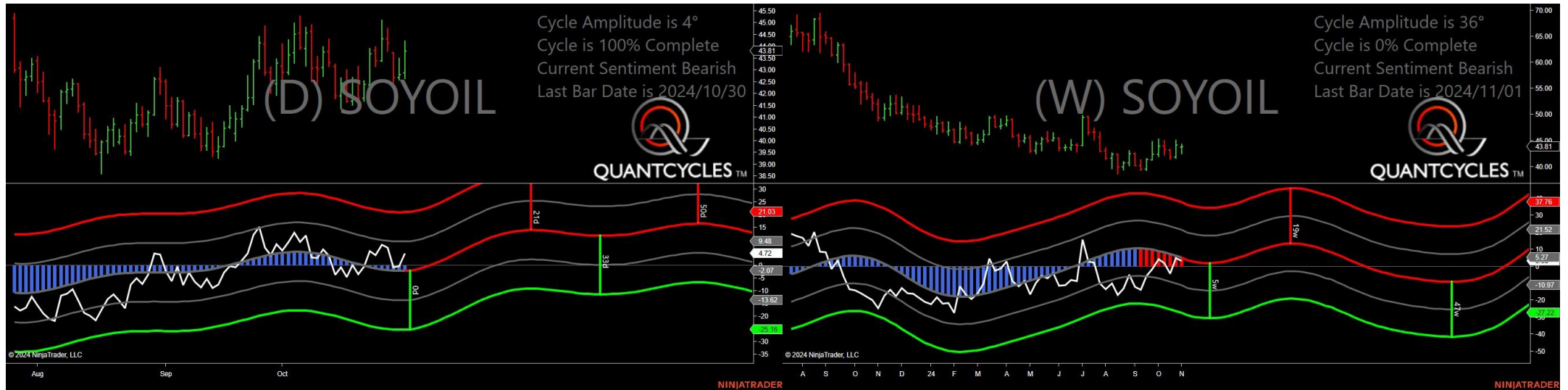
- Amplitude is 31° - Good
- Direction Accuracy is 0%
- Market is at Resistance Extreme - Expect market consolidation Between \$34.69 and \$34.62

Corn - Analysis Chart



- Amplitude is 6° - Weak
- Direction Accuracy is 0%
- Market is at Resistance Extreme - Expect market consolidation Between \$414.25 and \$413.25

Soybean Oil - Analysis Chart



- Amplitude is 4° - Weak
- Direction Accuracy is 0%
- Market is at Resistance Extreme - Expect market consolidation Between \$44.24 and \$43.81

Soybean Meal - Analysis Chart



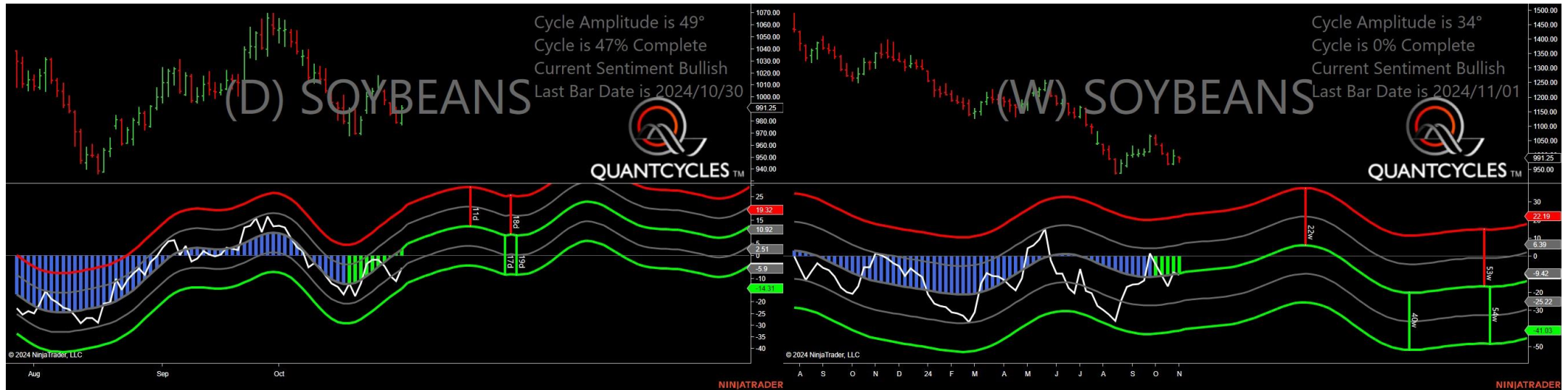
- Amplitude is 40° - Good
- Direction Accuracy is 50%
- Market is at Support Extreme - Expect market consolidation Between \$301.6 and \$300.5

Oats - Analysis Chart



- Amplitude is 26° - Good
- Direction Accuracy is 0%
- Market is at Resistance Extreme - Expect market consolidation Between \$392.5 and \$390.75

Soybeans - Analysis Chart



- Amplitude is 49° - Strong
- Direction Accuracy is 50%
- Market is at Support Extreme - Expect market consolidation Between \$978.5 and \$977.25

Wheat - Analysis Chart



- Amplitude is 35° - Good
- Direction Accuracy is 50%
- Market is at Support Extreme - Expect market consolidation Between \$571.25 and \$564