



QUANTCYCLES

COMMODITIES

OPPORTUNITIES & EXTREMES

About This Document

- This document contains two cyclical market patterns based on the QuantCycles Cycle Analysis Software
- **Cycle Continuation Opportunity** – These are defined as a deviation of the forecast direction that extend to the upper or lower extremes. There is a high probability that the market will return to the forecast direction within a projected time frame. A Dual Opportunity has a higher probability of returning to the forecast direction than a Single Opportunity.
 - Always look for market commonality. For example, if you're looking at a DOW30 stock to buy, does the index look positive as well?
 - As the market approaches the cycle forecast turning point, the probability of the market following that direction decays. This is indicated by the "Cycle Percent Complete" note at the top of the chart, as well as predicted duration dates
 - At an Opportunity, a strong market may continue to go against the forecast trend, therefore, we recommend waiting for confirmation of the turning point before acting on it.
 - If the Market has not returned to the direction of the cycle by the minimum expected cycle duration date, consider the cycle incorrect.
- **Cycle Extreme** – These are defined as a deviation of the forecast direction, but with a lessor probability of return to the forecast direction. A Dual Extreme is a stronger Support / Resistance than a Single Extreme.
 - The Cycle Continuation Opportunity information above applies here as well, but can be utilized more to take profits than to consider for entry
 - Indicates that a market is at or near a Cycle Support or Resistance.
 - There is a high probability of a market stall.

Analysis Overview

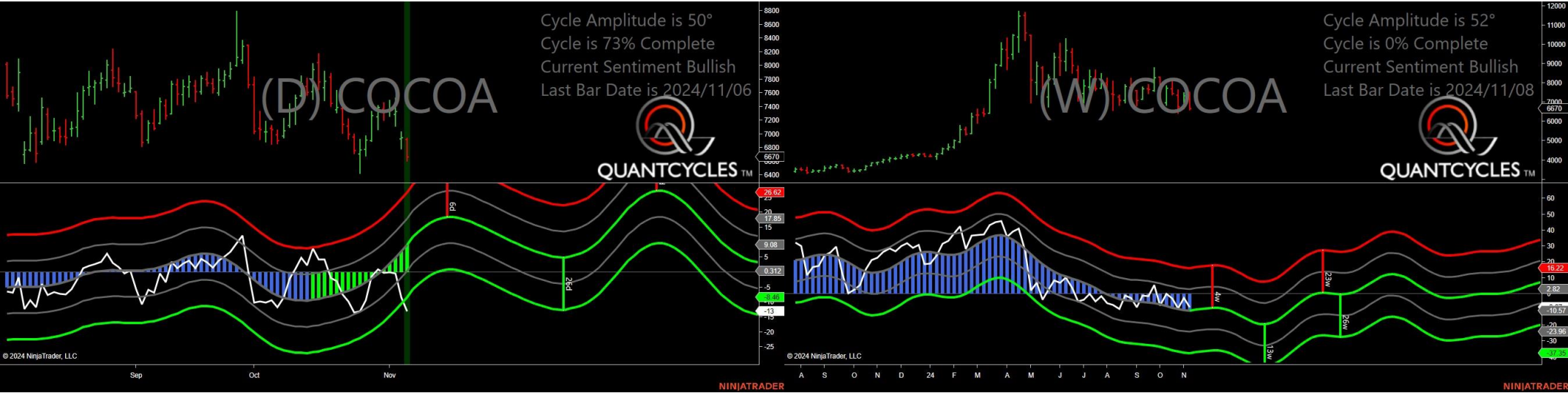
- 3 Single Extremes
- 20 Analysis

Cycle Extremes

3 Single Extremes

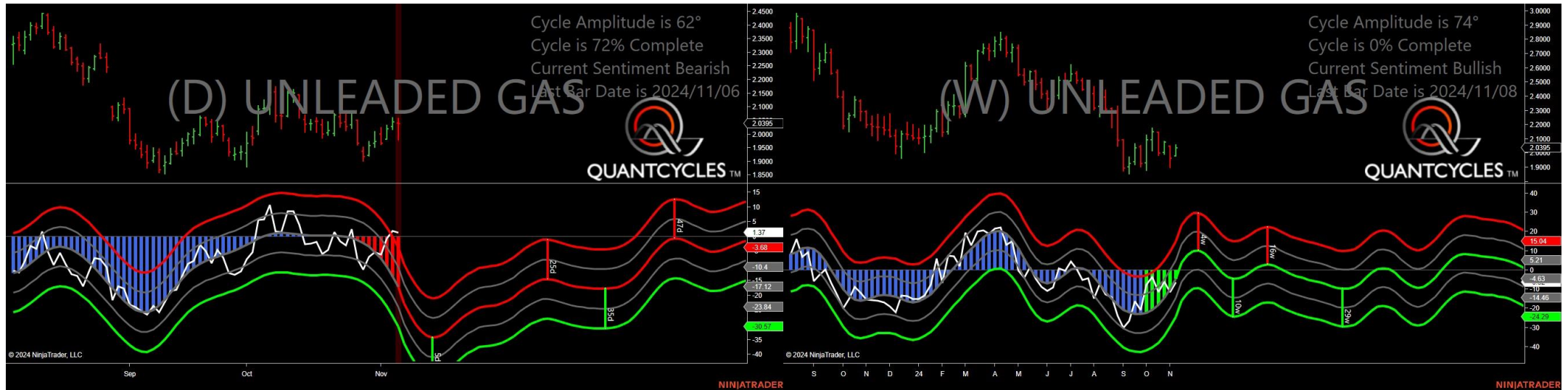
- CC - Cocoa
- RB - Unleaded Gas
- ZM - Soybean Meal

Cocoa - Single Daily Extreme



- Amplitude is 50° - Strong
- Direction Accuracy is 50%
- Market is at Support Extreme - Expect market consolidation Between \$6670 and \$6606

Unleaded Gas - Single Daily Extreme



- Amplitude is 62° - Strong
- Direction Accuracy is 0%
- Market is at Resistance Extreme - Expect market consolidation Between \$2.0577 and \$2.0418

Soybean Meal - Single Daily Extreme



- Amplitude is 37° - Good
- Direction Accuracy is 50%
- Market is at Support Extreme - Expect market consolidation Between \$298.4 and \$293.1

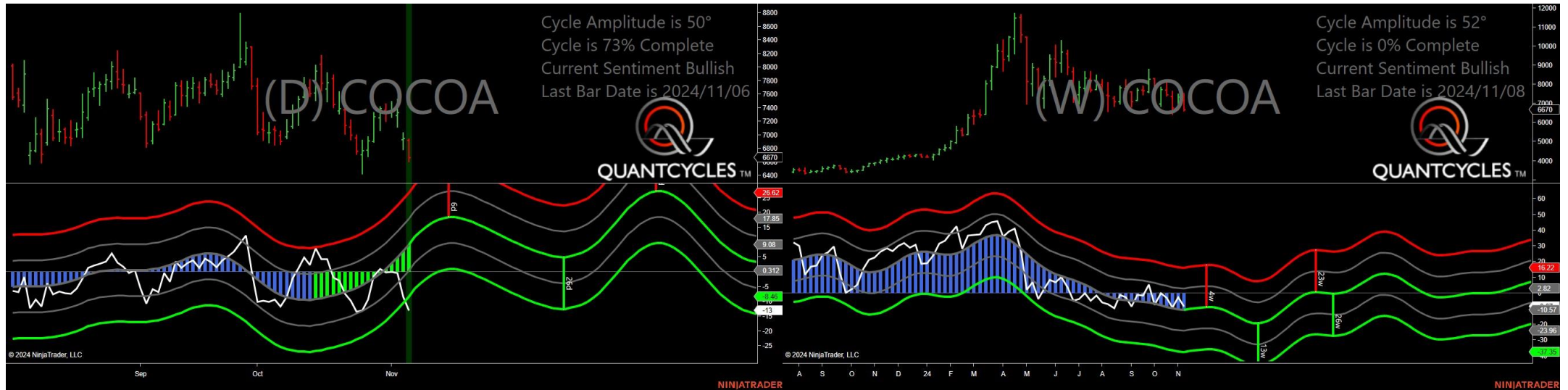
Analysis Charts

20 Charts

- CL - Crude Oil
- CT - Cotton
- GC - Gold
- GF - Feeder Cattle
- HE - Live Hogs
- HG - Copper
- HO - Heating Oil
- KC - Coffee
- LE - Live Cattle
- NG - Natural Gas
- OJ - Oranje Juice
- PA - Palladium
- PL - Platinum
- SB - Sugar
- SI - Silver
- ZC - Corn
- ZL - Soybean Oil

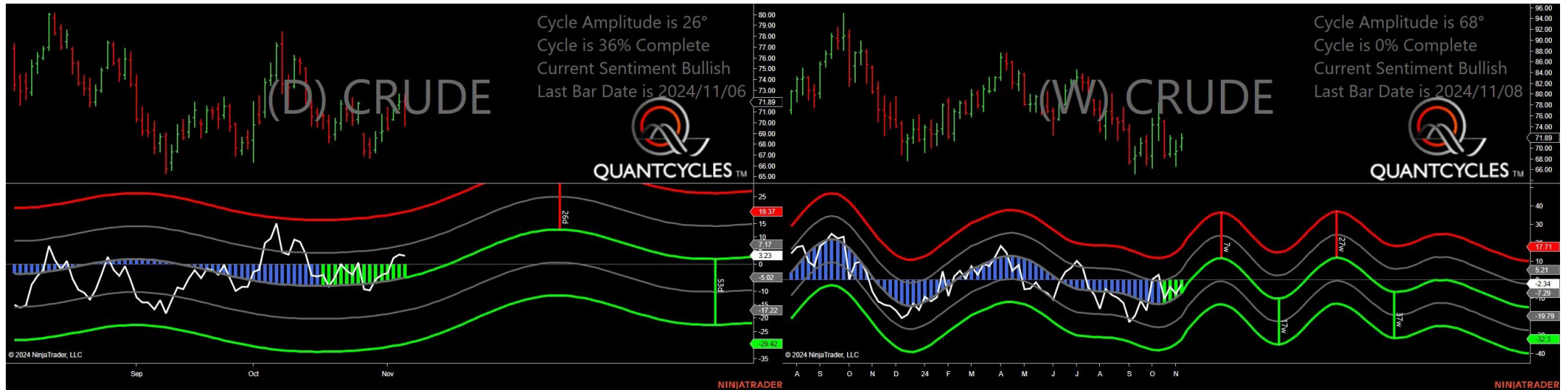
- ZO - Oats
- ZS - Soybeans
- ZW - Wheat

Cocoa - Analysis Chart



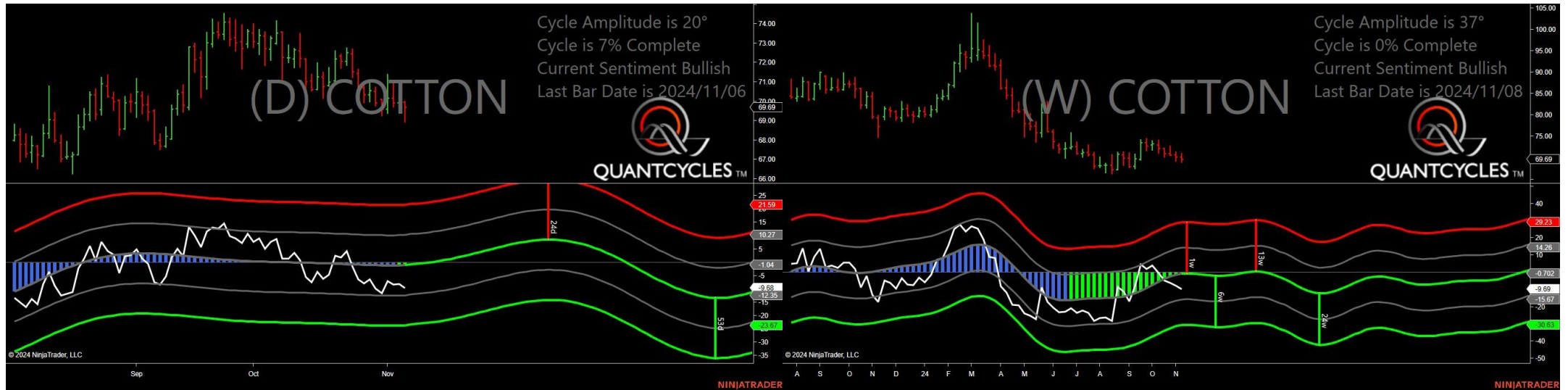
- Amplitude is 50° - Strong
- Direction Accuracy is 50%
- Market is at Support Extreme - Expect market consolidation Between \$6670 and \$6606

Crude Oil - Analysis Chart



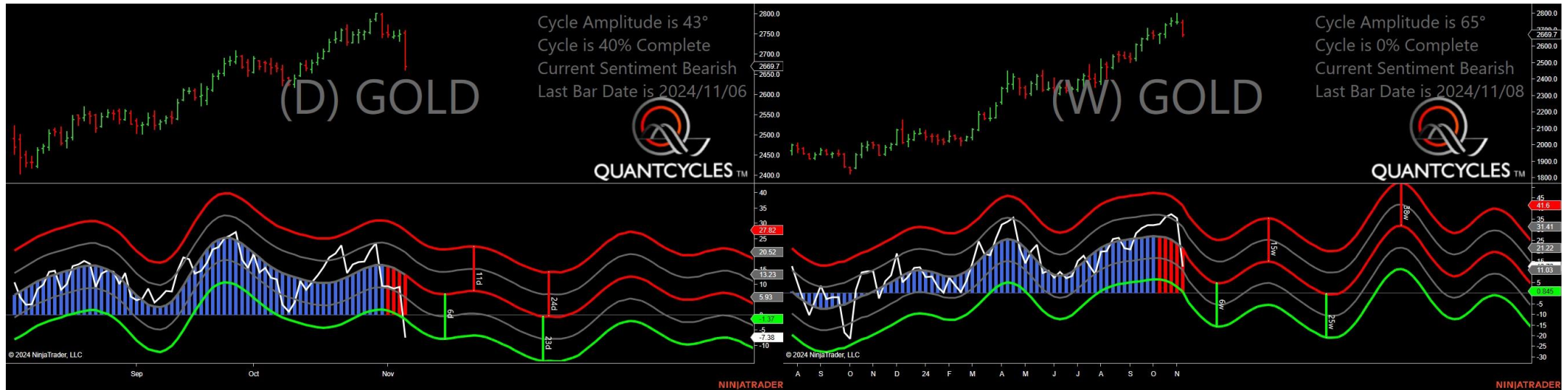
- Amplitude is 26° - Good
- Direction Accuracy is 50%
- Market is at Support Extreme - Expect market consolidation Between \$71.89 and \$69.73

Cotton - Analysis Chart



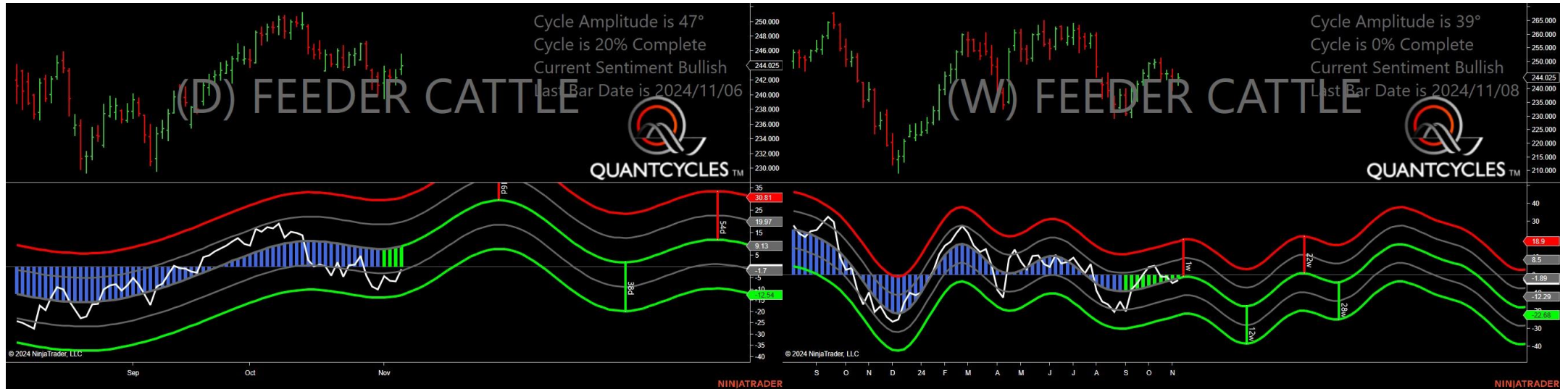
- Amplitude is 20° - Weak
- Direction Accuracy is 50%
- Market is at Support Extreme - Expect market consolidation Between \$69.69 and \$68.95

Gold - Analysis Chart



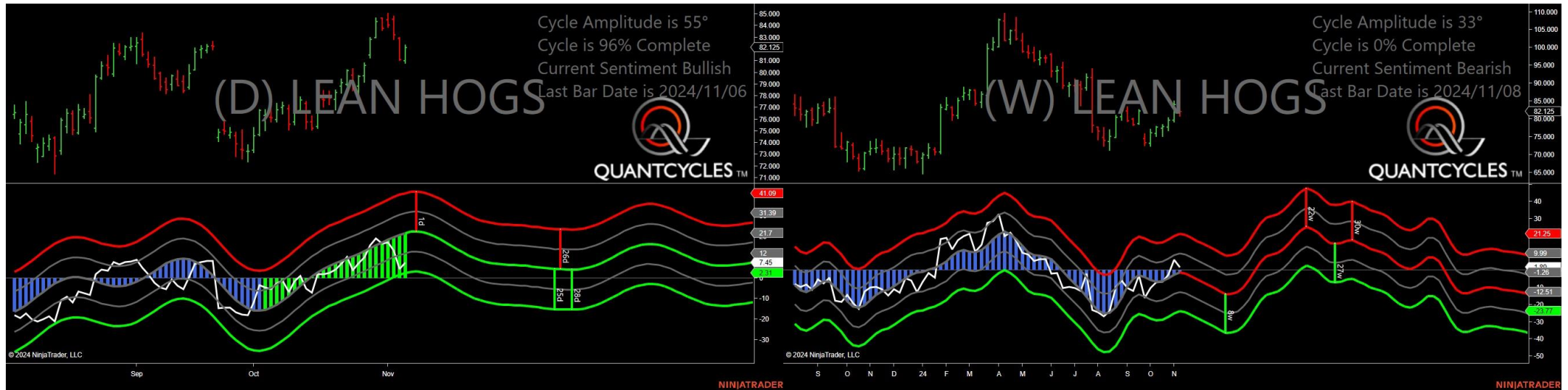
- Amplitude is 43° - Strong
- Direction Accuracy is 0%
- Market is at Resistance Extreme - Expect market consolidation Between \$2758.8 and \$2752.6

Feeder Cattle - Analysis Chart



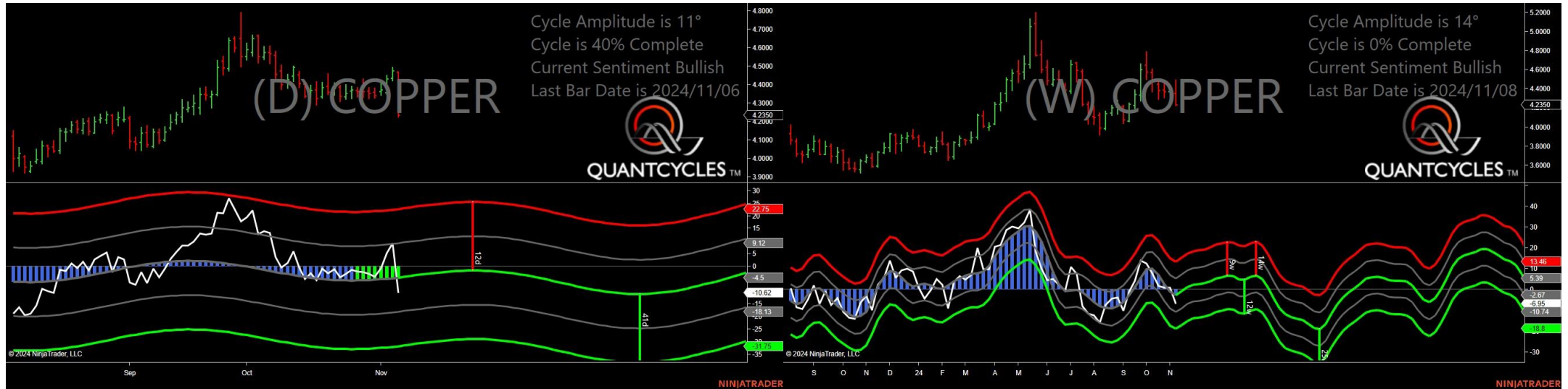
- Amplitude is 47° - Strong
- Direction Accuracy is 50%
- Market is at Support Extreme - Expect market consolidation Between \$243.5 and \$242.825

Live Hogs - Analysis Chart



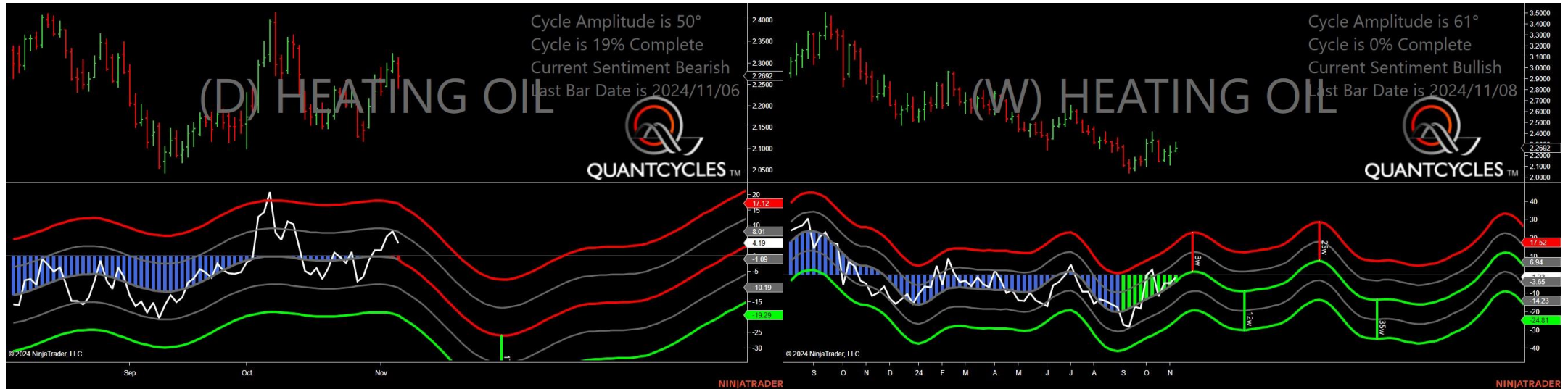
- Amplitude is 55° - Strong
- Direction Accuracy is 50%
- Market is at Support Extreme - Expect market consolidation Between \$81.025 and \$80.825

Copper - Analysis Chart



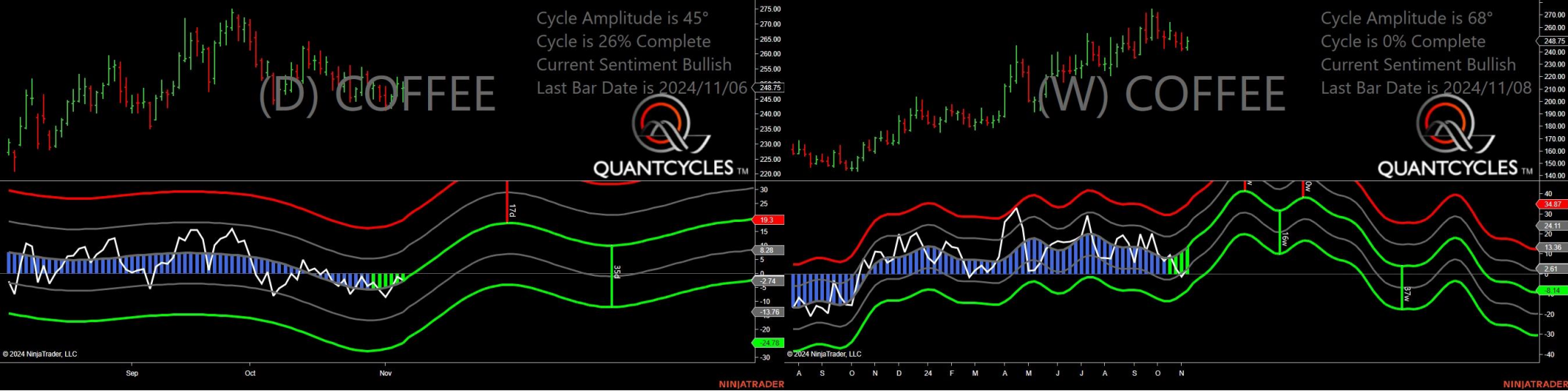
- Amplitude is 11° - Weak
- Direction Accuracy is 50%
- Market is at Support Extreme - Expect market consolidation Between \$4.235 and \$4.226

Heating Oil - Analysis Chart



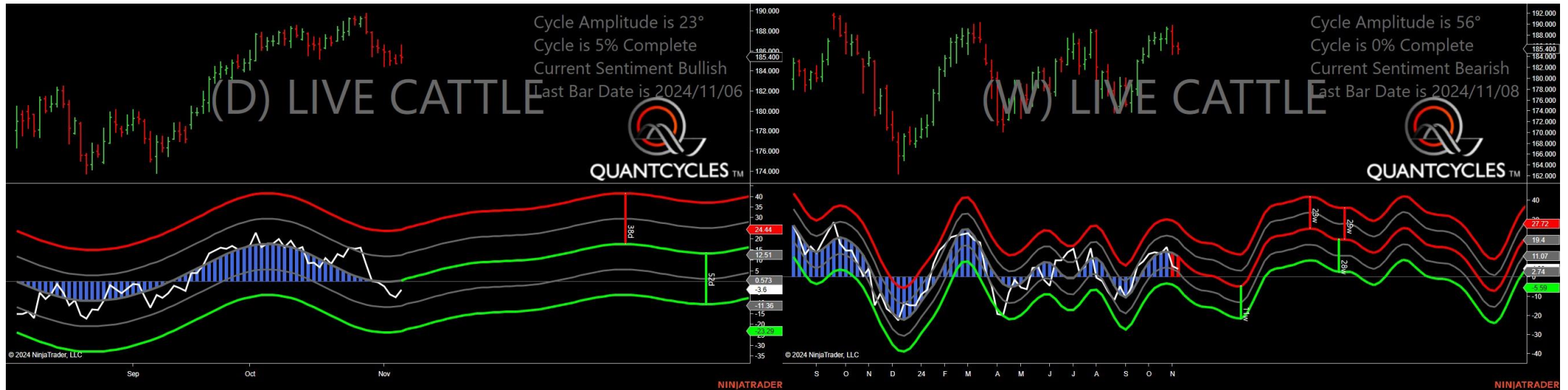
- Amplitude is 50° - Strong
- Direction Accuracy is 0%
- Market is at Resistance Extreme - Expect market consolidation Between \$2.3123 and \$2.2988

Coffee - Analysis Chart



- Amplitude is 45° - Strong
- Direction Accuracy is 50%
- Market is at Support Extreme - Expect market consolidation Between \$248.6 and \$244.15

Live Cattle - Analysis Chart



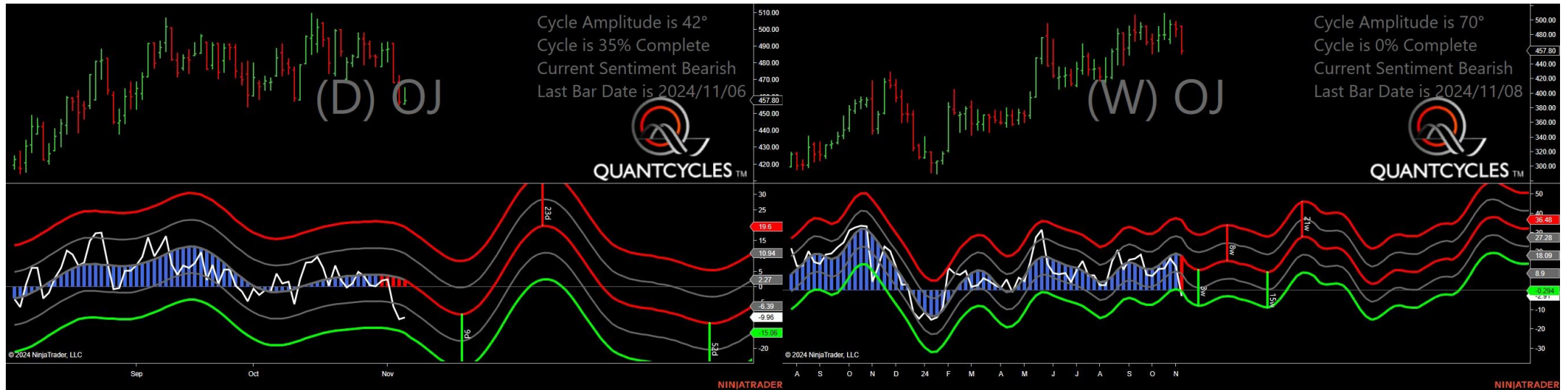
- Amplitude is 23° - Good
- Direction Accuracy is 50%
- Market is at Support Extreme - Expect market consolidation Between \$185.4 and \$184.825

Natural Gas - Analysis Chart



- Amplitude is 41° - Strong
- Direction Accuracy is 0%
- Market is at Resistance Extreme - Expect market consolidation Between \$2.796 and \$2.734

Oranje Juice - Analysis Chart



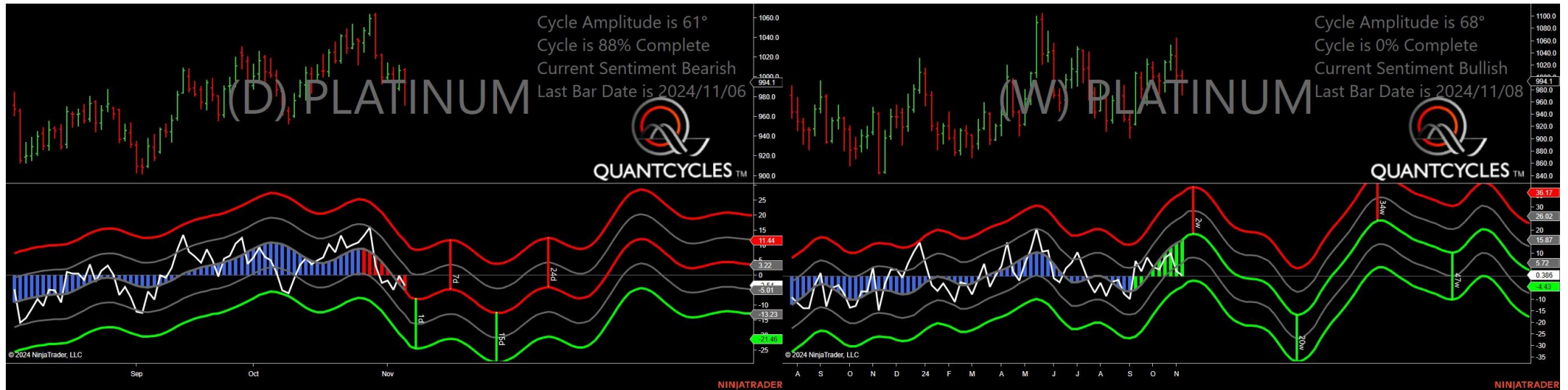
- Amplitude is 42° - Strong
- Direction Accuracy is 0%
- Market is at Resistance Extreme - Expect market consolidation Between \$465.25 and \$457.8

Palladium - Analysis Chart



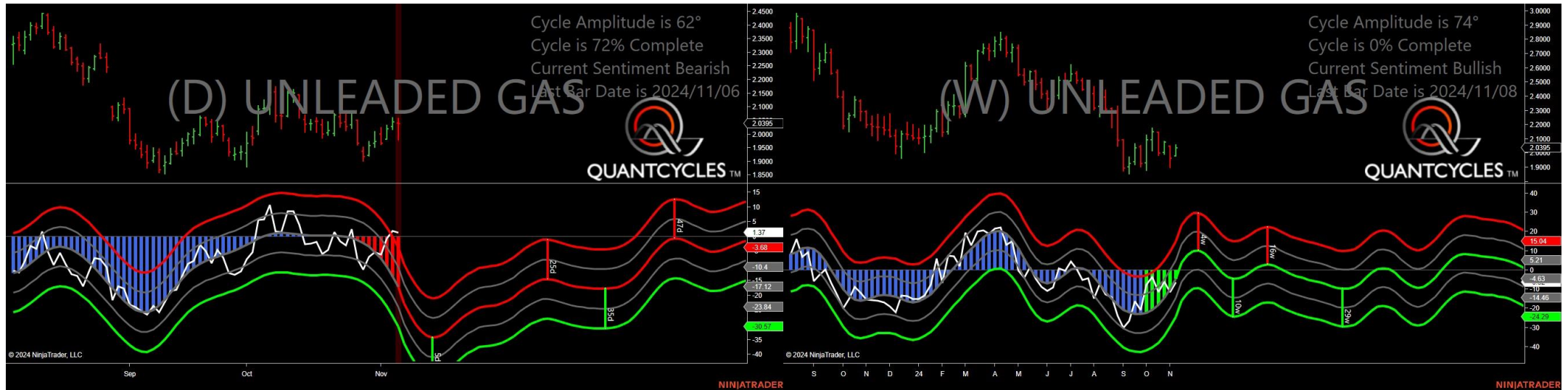
- Amplitude is 39° - Good
- Direction Accuracy is 50%
- Market is at Support Extreme - Expect market consolidation Between \$1038 and \$1026

Platinum - Analysis Chart



- Amplitude is 61° - Strong
- Direction Accuracy is 0%
- Market is at Resistance Extreme - Expect market consolidation Between \$1008.5 and \$1007.4

Unleaded Gas - Analysis Chart



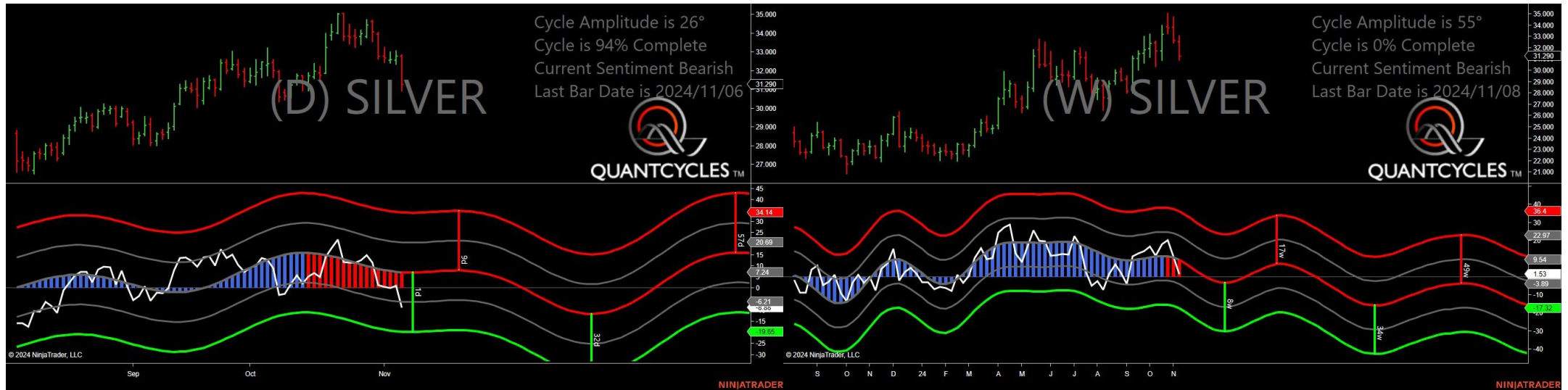
- Amplitude is 62° - Strong
- Direction Accuracy is 0%
- Market is at Resistance Extreme - Expect market consolidation Between \$2.0577 and \$2.0418

Sugar - Analysis Chart



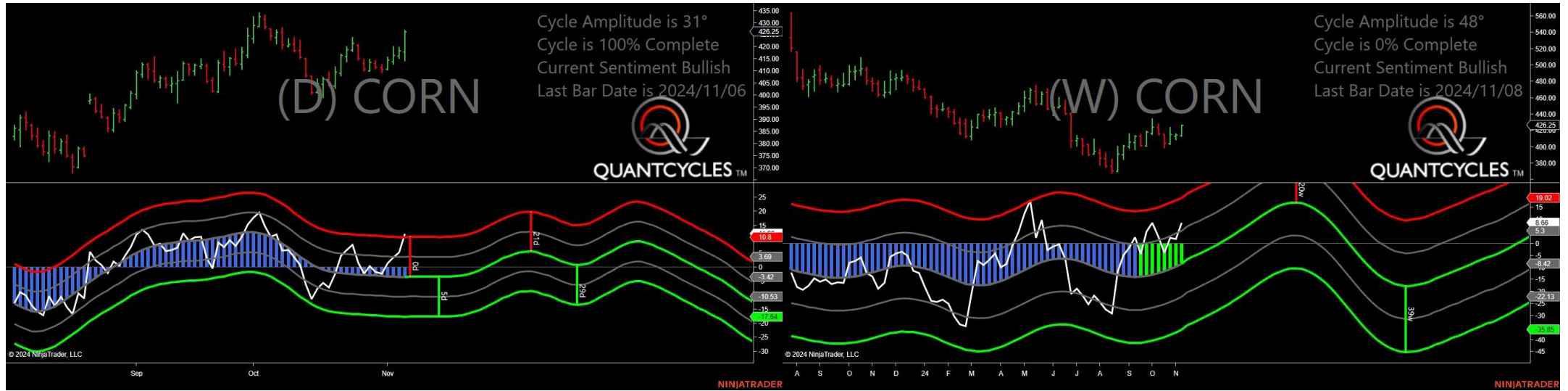
- Amplitude is 29° - Good
- Direction Accuracy is 50%
- Market is at Support Extreme - Expect market consolidation Between \$21.75 and \$21.6

Silver - Analysis Chart



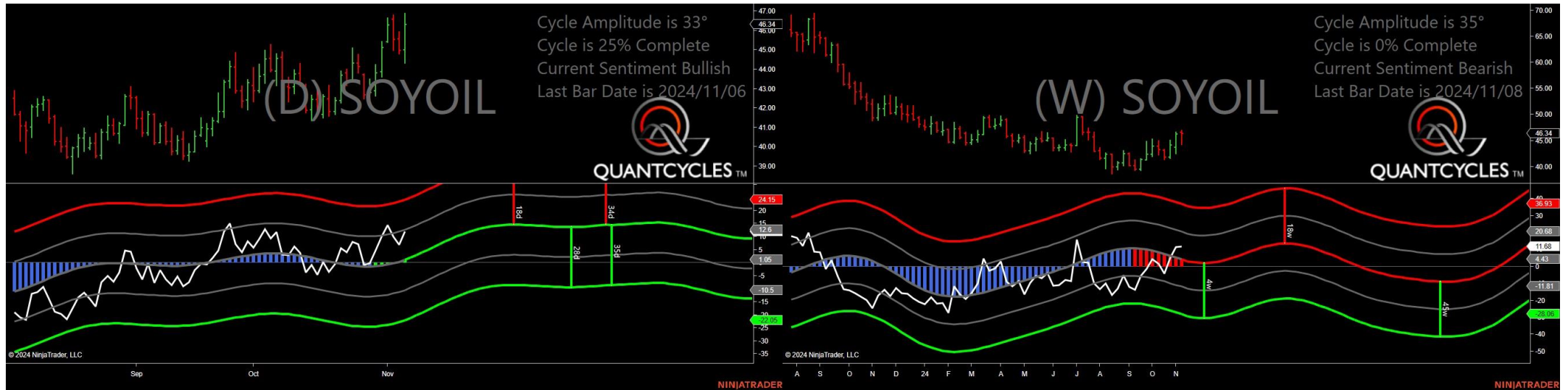
- Amplitude is 26° - Good
- Direction Accuracy is 0%
- Market is at Resistance Extreme - Expect market consolidation Between \$32.85 and \$32.78

Corn - Analysis Chart



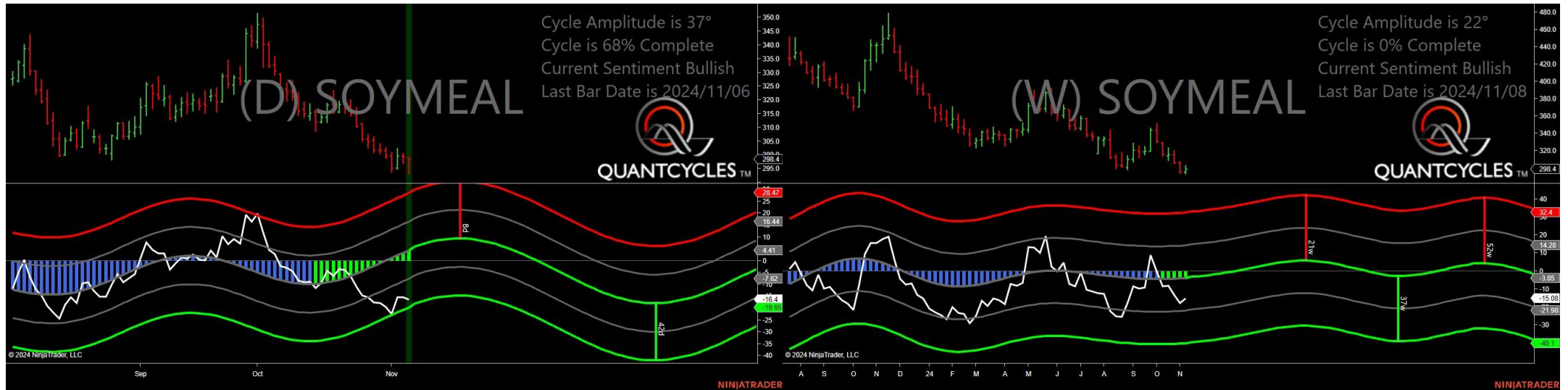
- Amplitude is 31° - Good
- Direction Accuracy is 50%
- Market is at Support Extreme - Expect market consolidation Between \$418 and \$414.25

Soybean Oil - Analysis Chart



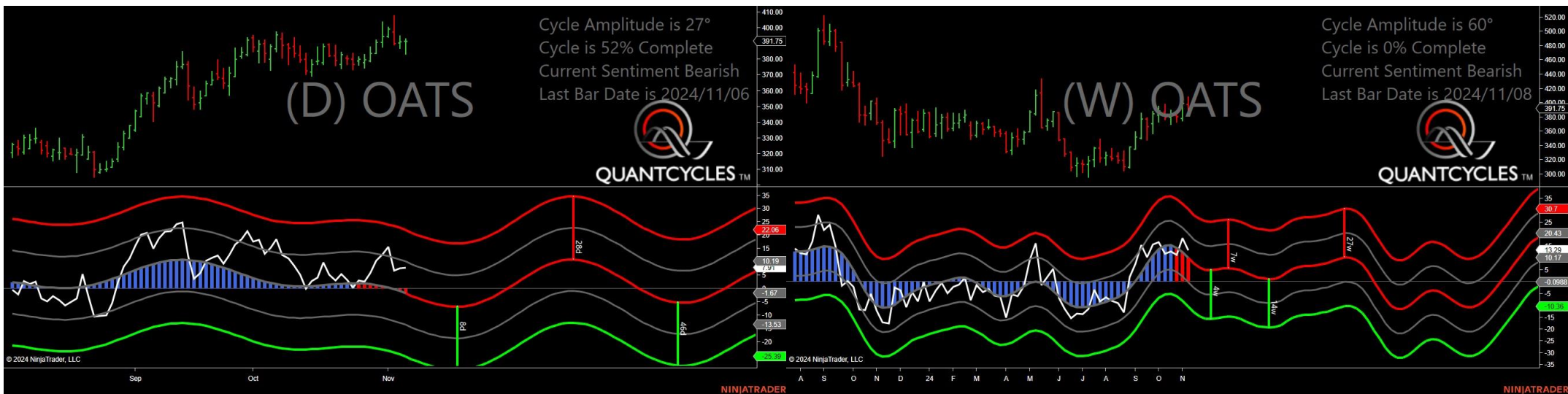
- Amplitude is 33° - Good
- Direction Accuracy is 50%
- Market is at Support Extreme - Expect market consolidation Between \$45 and \$44.34

Soybean Meal - Analysis Chart



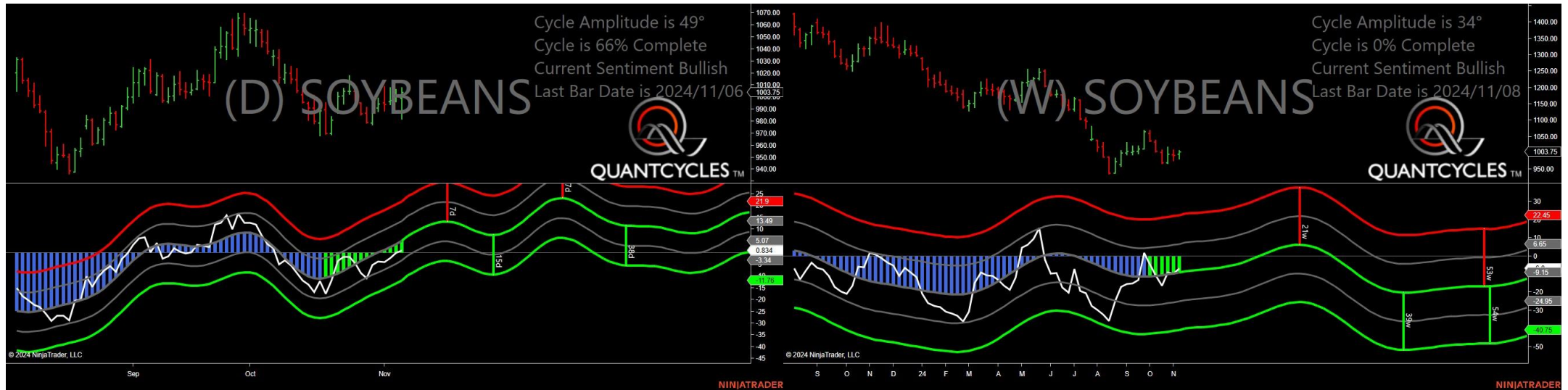
- Amplitude is 37° - Good
- Direction Accuracy is 50%
- Market is at Support Extreme - Expect market consolidation Between \$298.4 and \$293.1

Oats - Analysis Chart



- Amplitude is 27° - Good
- Direction Accuracy is 0%
- Market is at Resistance Extreme - Expect market consolidation Between \$393 and \$391.75

Soybeans - Analysis Chart



- Amplitude is 49° - Strong
- Direction Accuracy is 50%
- Market is at Support Extreme - Expect market consolidation Between \$999.25 and \$982

Wheat - Analysis Chart



- Amplitude is 32° - Good
- Direction Accuracy is 50%
- Market is at Support Extreme - Expect market consolidation Between \$571 and \$562