



QUANTCYCLES

COMMODITIES

OPPORTUNITIES & EXTREMES

About This Document

- This document contains two cyclical market patterns based on the QuantCycles Cycle Analysis Software
 - **Cycle Continuation Opportunity** – These are defined as a deviation of the forecast direction that extend to the upper or lower extremes. There is a high probability that the market will return to the forecast direction within a projected time frame. A Dual Opportunity has a higher probability of returning to the forecast direction than a Single Opportunity.
 - Always look for market commonality. For example, if you're looking at a DOW30 stock to buy, does the index look positive as well?
 - As the market approaches the cycle forecast turning point, the probability of the market following that direction decays. This is indicated by the "Cycle Percent Complete" note at the top of the chart, as well as predicted duration dates
 - At an Opportunity, a strong market may continue to go against the forecast trend, therefore, we recommend waiting for confirmation of the turning point before acting on it.
 - If the Market has not returned to the direction of the cycle by the minimum expected cycle duration date, consider the cycle incorrect.
 - **Cycle Extreme** – These are defined as a deviation of the forecast direction, but with a lessor probability of return to the forecast direction. A Dual Extreme is a stronger Support / Resistance than a Single Extreme.
 - The Cycle Continuation Opportunity information above applies here as well, but can be utilized more to take profits than to consider for entry
 - Indicates that a market is at or near a Cycle Support or Resistance.
 - There is a high probability of a market stall.

Analysis Overview

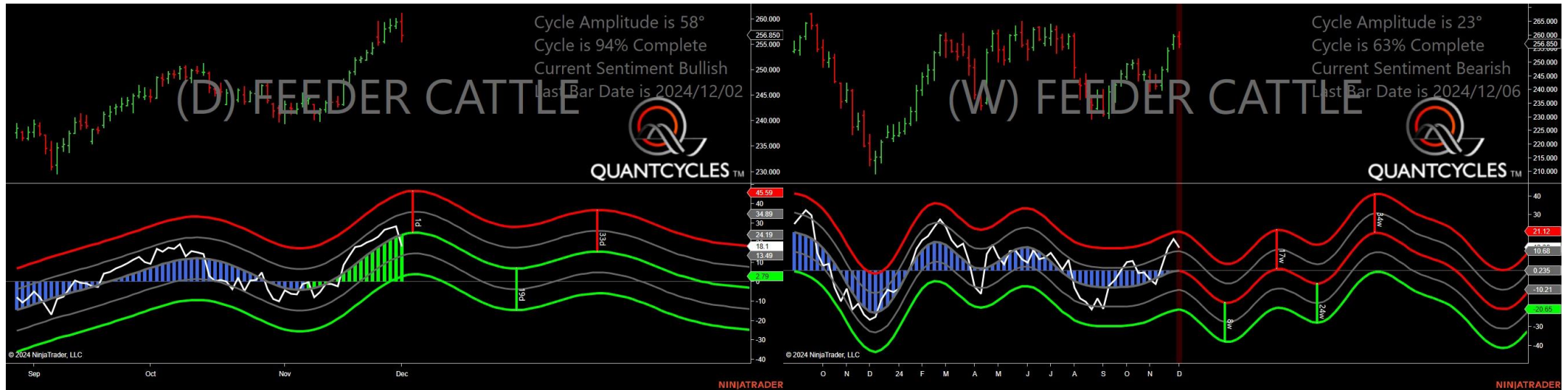
- 3 Single Extremes
- 20 Analysis

Cycle Extremes

3 Single Extremes

- GF - Feeder Cattle
- HE - Live Hogs
- ZL - Soybean Oil

Feeder Cattle - Single Weekly Extreme



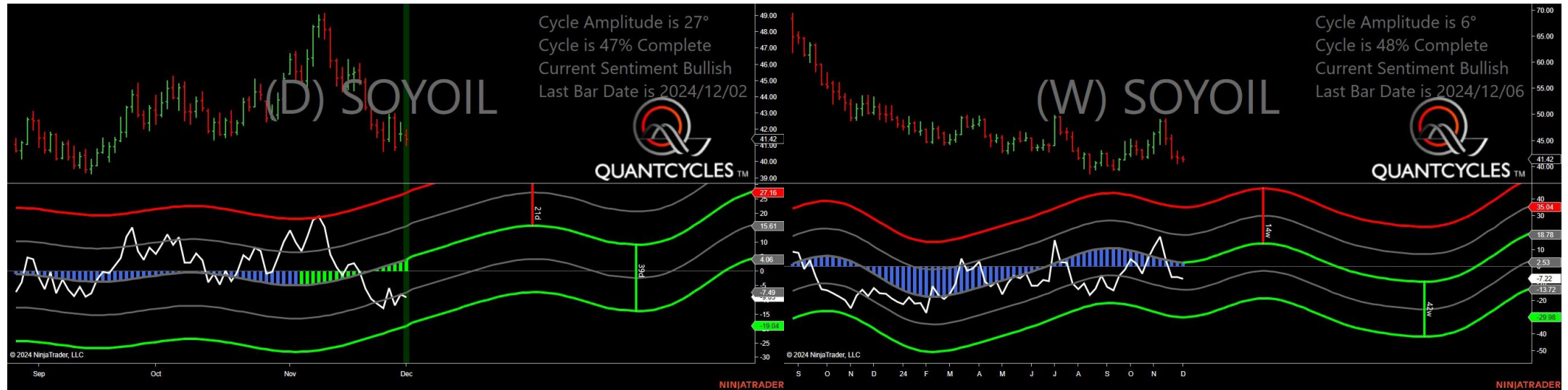
- Amplitude is 58° - Strong
- Direction Accuracy is 50%
- Market is at Support Extreme - Expect market consolidation Between \$256.85 and \$255.575

Live Hogs - Single Weekly Extreme



- Amplitude is 40° - Good
- Direction Accuracy is 50%
- Market is at Support Extreme - Expect market consolidation Between \$86.425 and \$86.425

Soybean Oil - Single Daily Extreme



- Amplitude is 27° - Good
- Direction Accuracy is 50%
- Market is at Support Extreme - Expect market consolidation Between \$41.42 and \$41.01

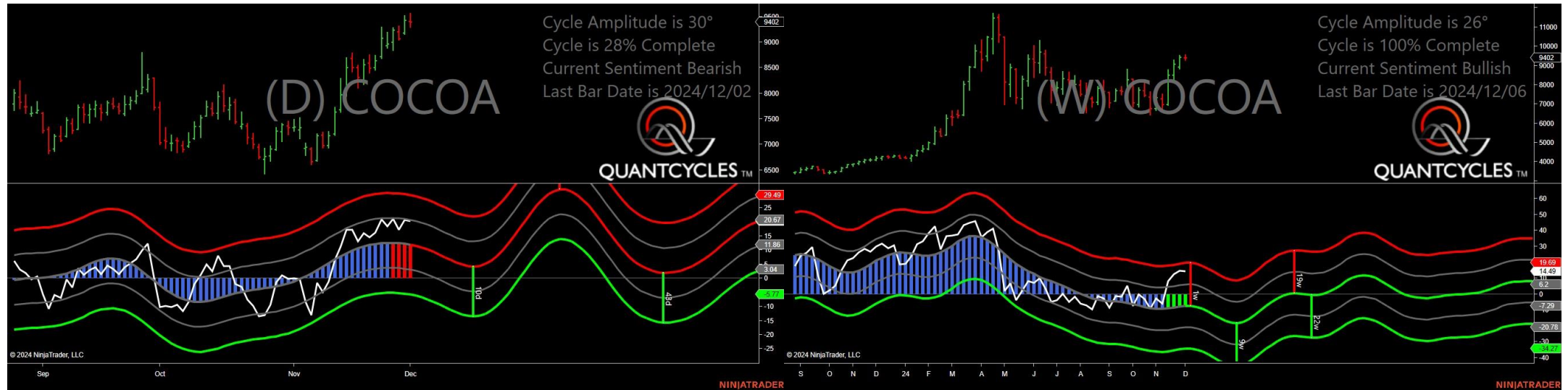
Analysis Charts

20 Charts

- CC - Cocoa
- CL - Crude Oil
- CT - Cotton
- GC - Gold
- HG - Copper
- HO - Heating Oil
- KC - Coffee
- LE - Live Cattle
- NG - Natural Gas
- OJ - Oranje Juice
- PA - Palladium
- PL - Platinum
- RB - Unleaded Gas
- SB - Sugar
- SI - Silver
- ZC - Corn
- ZM - Soybean Meal

- ZO - Oats
- ZS - Soybeans
- ZW - Wheat

Cocoa - Analysis Chart



- Amplitude is 30° - Good
- Direction Accuracy is 0%
- Market is at Resistance Extreme - Expect market consolidation Between \$9569 and \$9406

Crude Oil - Analysis Chart



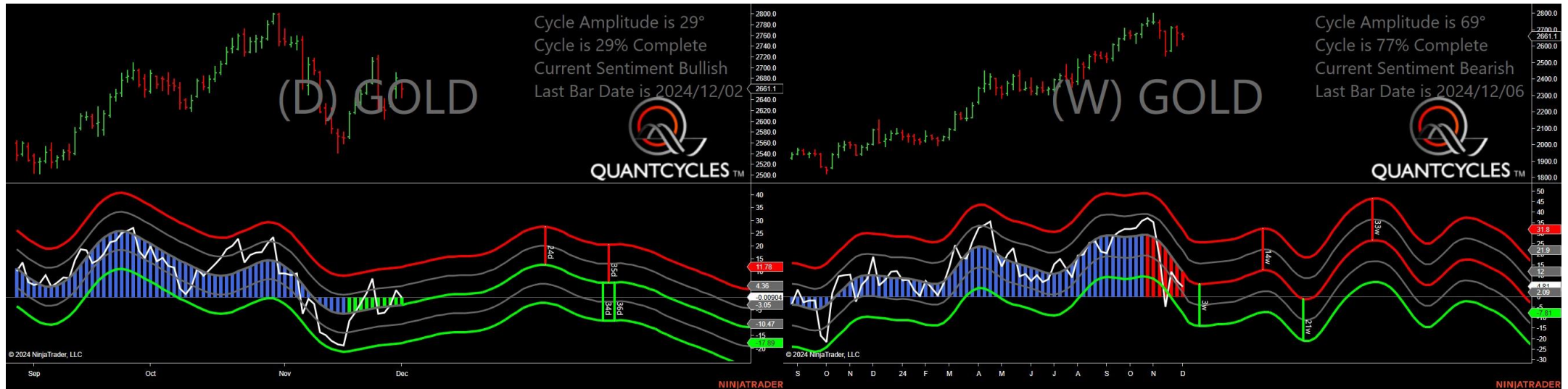
- Amplitude is 29° - Good
- Direction Accuracy is 50%
- Market is at Support Extreme - Expect market consolidation Between \$68 and \$67.7

Cotton - Analysis Chart



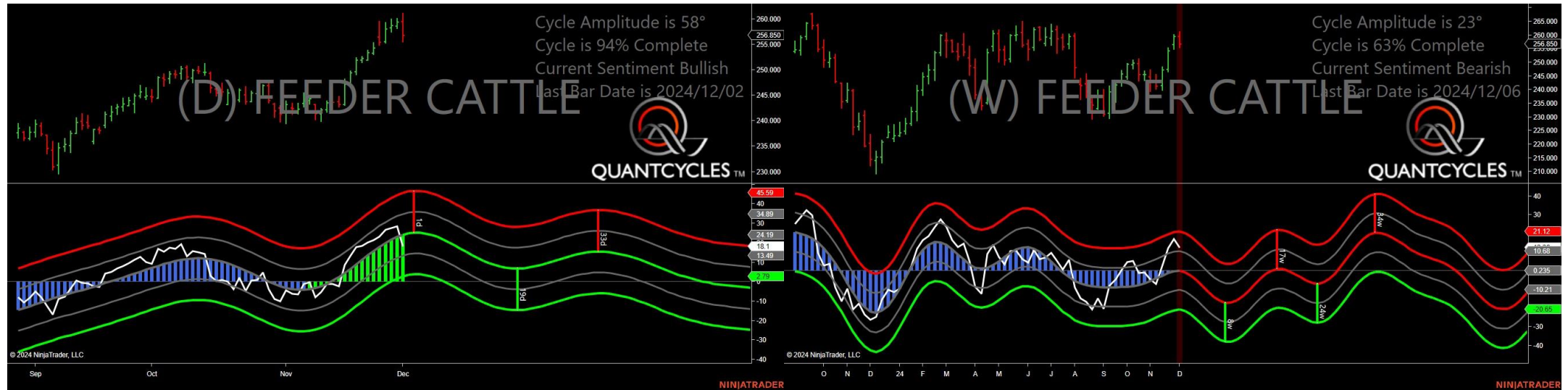
- Amplitude is 28° - Good
- Direction Accuracy is 50%
- Market is at Support Extreme - Expect market consolidation Between \$71.49 and \$70.38

Gold - Analysis Chart



- Amplitude is 29° - Good
- Direction Accuracy is 50%
- Market is at Support Extreme - Expect market consolidation Between \$2661.1 and \$2644.5

Feeder Cattle - Analysis Chart



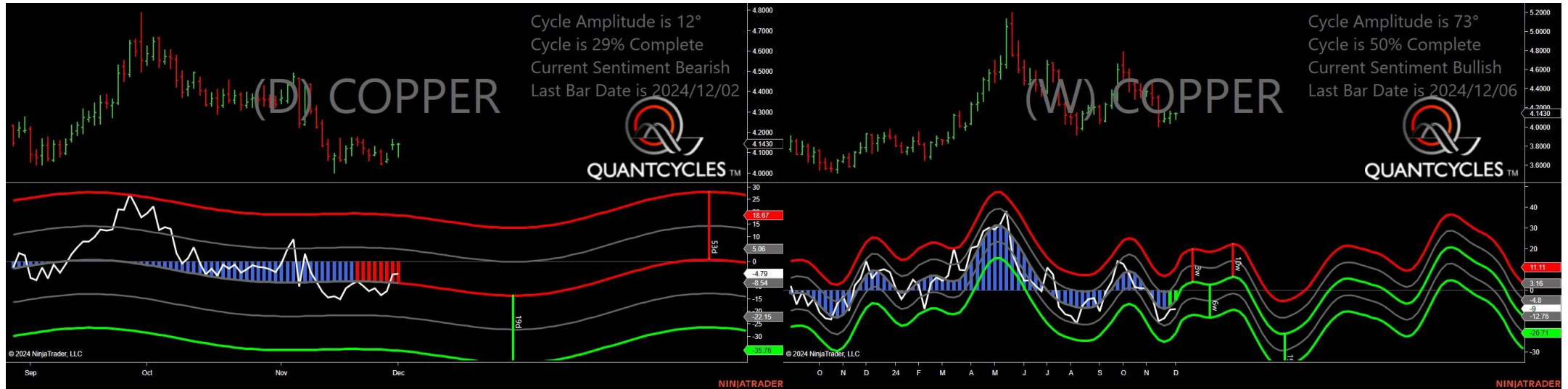
- Amplitude is 58° - Strong
- Direction Accuracy is 50%
- Market is at Support Extreme - Expect market consolidation Between \$256.85 and \$255.575

Live Hogs - Analysis Chart



- Amplitude is 40° - Good
- Direction Accuracy is 50%
- Market is at Support Extreme - Expect market consolidation Between \$86.425 and \$86.425

Copper - Analysis Chart



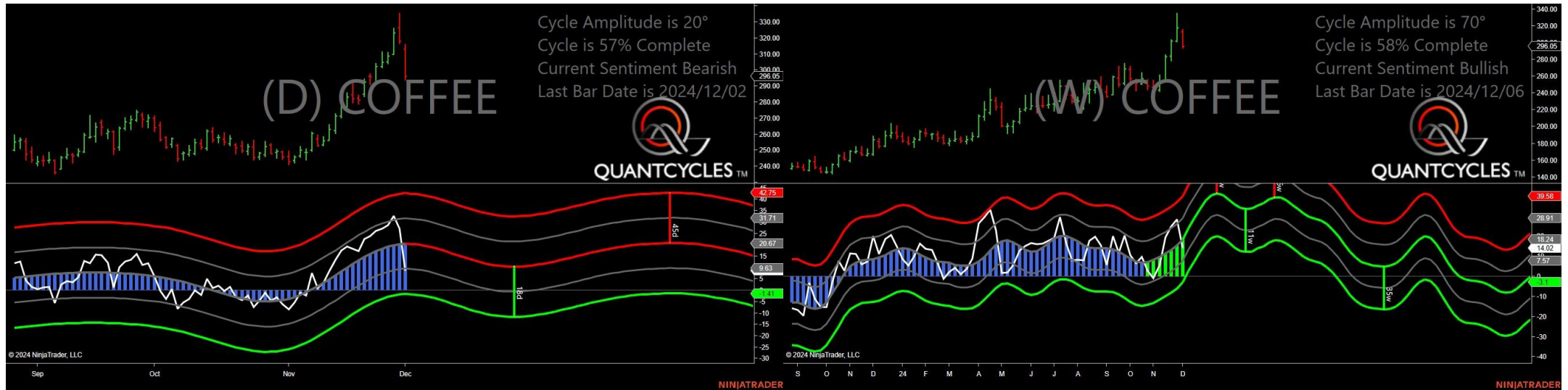
- Amplitude is 12° - Weak
- Direction Accuracy is 0%
- Market is at Resistance Extreme - Expect market consolidation Between \$4.1475 and \$4.143

Heating Oil - Analysis Chart



- Amplitude is 52° - Strong
- Direction Accuracy is 0%
- Market is at Resistance Extreme - Expect market consolidation Between \$2.2277 and \$2.2039

Coffee - Analysis Chart



- Amplitude is 20° - Weak
- Direction Accuracy is 0%
- Market is at Resistance Extreme - Expect market consolidation Between \$315.9 and \$313.05

Live Cattle - Analysis Chart



- Amplitude is 29° - Good
- Direction Accuracy is 50%
- Market is at Support Extreme - Expect market consolidation Between \$187.925 and \$187.025

Natural Gas - Analysis Chart



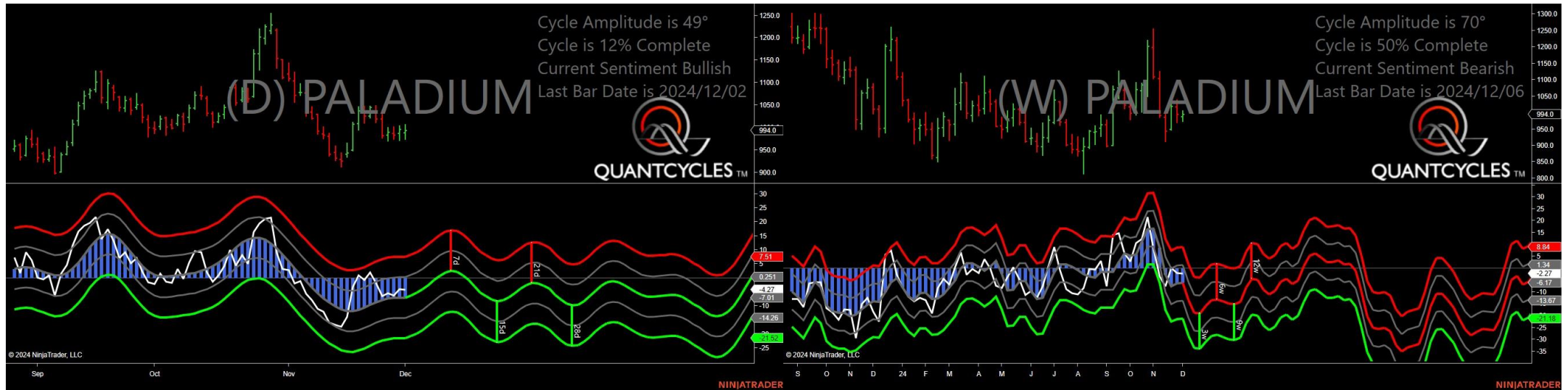
- Amplitude is 47° - Strong
- Direction Accuracy is 0%
- Market is at Resistance Extreme - Expect market consolidation Between \$3.279 and \$3.22

Oranje Juice - Analysis Chart



- Amplitude is 58° - Strong
- Direction Accuracy is 50%
- Market is at Support Extreme - Expect market consolidation Between \$503.1 and \$500

Palladium - Analysis Chart



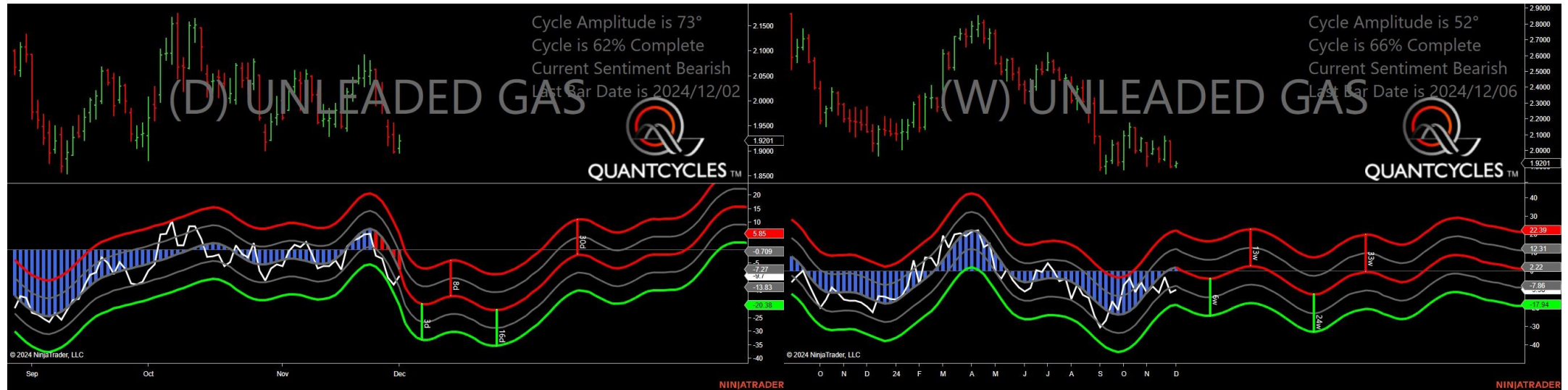
- Amplitude is 49° - Strong
- Direction Accuracy is 50%
- Market is at Support Extreme - Expect market consolidation Between \$988 and \$974.5

Platinum - Analysis Chart



- Amplitude is 2° - Weak
- Direction Accuracy is 50%
- Market is at Support Extreme - Expect market consolidation Between \$950.5 and \$941.2

Unleaded Gas - Analysis Chart



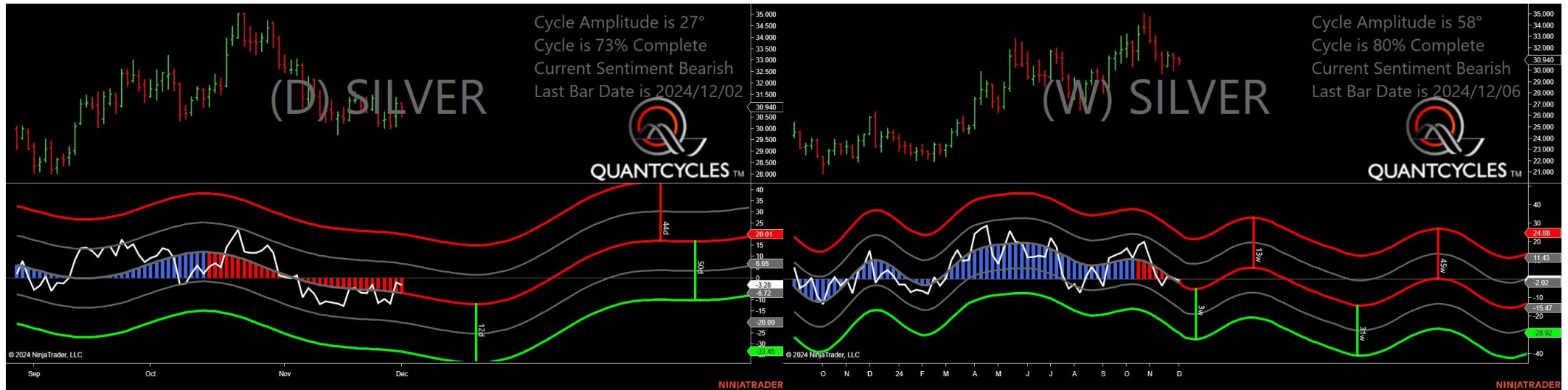
- Amplitude is 73° - Strong
- Direction Accuracy is 0%
- Market is at Resistance Extreme - Expect market consolidation Between \$1.9324 and \$1.9201

Sugar - Analysis Chart



- Amplitude is 3° - Weak
- Direction Accuracy is 0%
- Market is at Resistance Extreme - Expect market consolidation Between \$21.26 and \$21.09

Silver - Analysis Chart



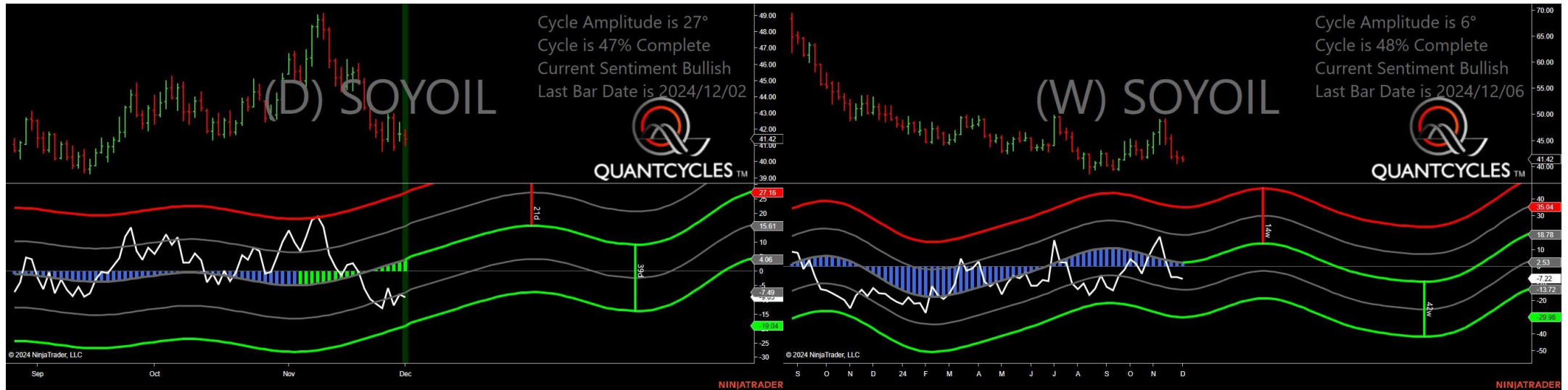
- Amplitude is 27° - Good
- Direction Accuracy is 0%
- Market is at Resistance Extreme - Expect market consolidation Between \$31.135 and \$31.12

Corn - Analysis Chart



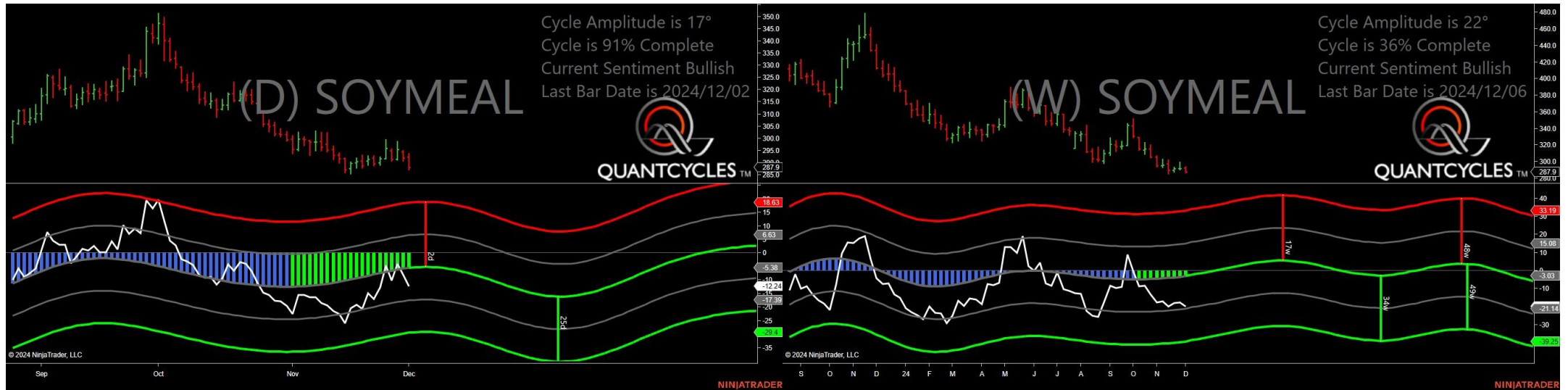
- Amplitude is 35° - Good
- Direction Accuracy is 50%
- Market is at Support Extreme - Expect market consolidation Between \$432.5 and \$429.75

Soybean Oil - Analysis Chart



- Amplitude is 27° - Good
- Direction Accuracy is 50%
- Market is at Support Extreme - Expect market consolidation Between \$41.42 and \$41.01

Soybean Meal - Analysis Chart



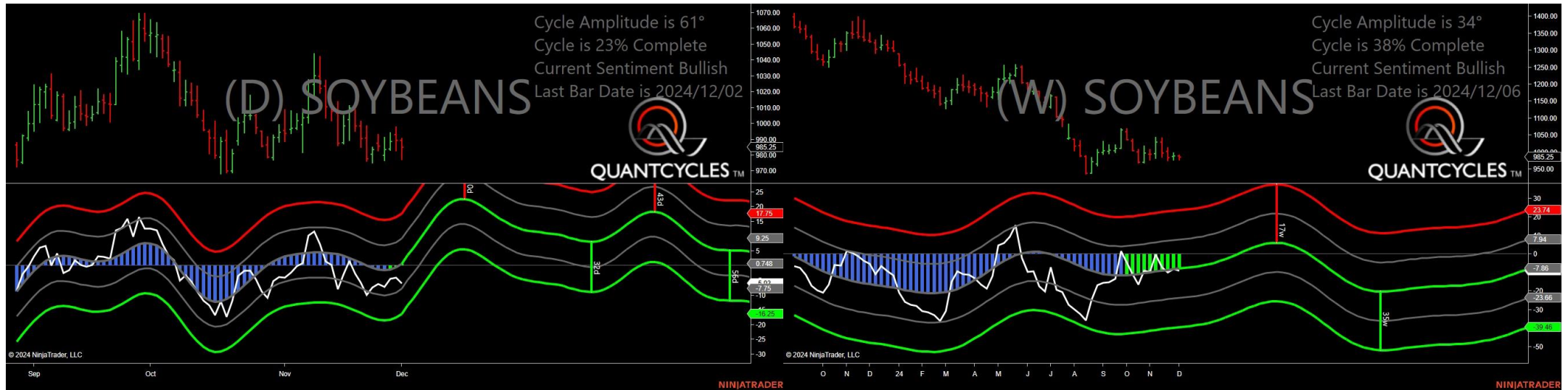
- Amplitude is 17° - Weak
- Direction Accuracy is 50%
- Market is at Support Extreme - Expect market consolidation Between \$287.9 and \$287.1

Oats - Analysis Chart



- Amplitude is 38° - Good
- Direction Accuracy is 50%
- Market is at Support Extreme - Expect market consolidation Between \$358.25 and \$358.25

Soybeans - Analysis Chart



- Amplitude is 61° - Strong
- Direction Accuracy is 50%
- Market is at Support Extreme - Expect market consolidation Between \$985.25 and \$977.5

Wheat - Analysis Chart



- Amplitude is 50° - Strong
- Direction Accuracy is 50%
- Market is at Support Extreme - Expect market consolidation Between \$547.25 and \$542.75