



QUANTCYCLES

COMMODITIES

OPPORTUNITIES & EXTREMES

About This Document

- This document contains two cyclical market patterns based on the QuantCycles Cycle Analysis Software
 - **Cycle Continuation Opportunity** – These are defined as a deviation of the forecast direction that extend to the upper or lower extremes. There is a high probability that the market will return to the forecast direction within a projected time frame. A Dual Opportunity has a higher probability of returning to the forecast direction than a Single Opportunity.
 - Always look for market commonality. For example, if you're looking at a DOW30 stock to buy, does the index look positive as well?
 - As the market approaches the cycle forecast turning point, the probability of the market following that direction decays. This is indicated by the "Cycle Percent Complete" note at the top of the chart, as well as predicted duration dates
 - At an Opportunity, a strong market may continue to go against the forecast trend, therefore, we recommend waiting for confirmation of the turning point before acting on it.
 - If the Market has not returned to the direction of the cycle by the minimum expected cycle duration date, consider the cycle incorrect.
 - **Cycle Extreme** – These are defined as a deviation of the forecast direction, but with a lessor probability of return to the forecast direction. A Dual Extreme is a stronger Support / Resistance than a Single Extreme.
 - The Cycle Continuation Opportunity information above applies here as well, but can be utilized more to take profits than to consider for entry
 - Indicates that a market is at or near a Cycle Support or Resistance.
 - There is a high probability of a market stall.

Analysis Overview

- 1 Dual Extremes
- 5 Single Extremes
- 17 Analysis

Cycle Extremes

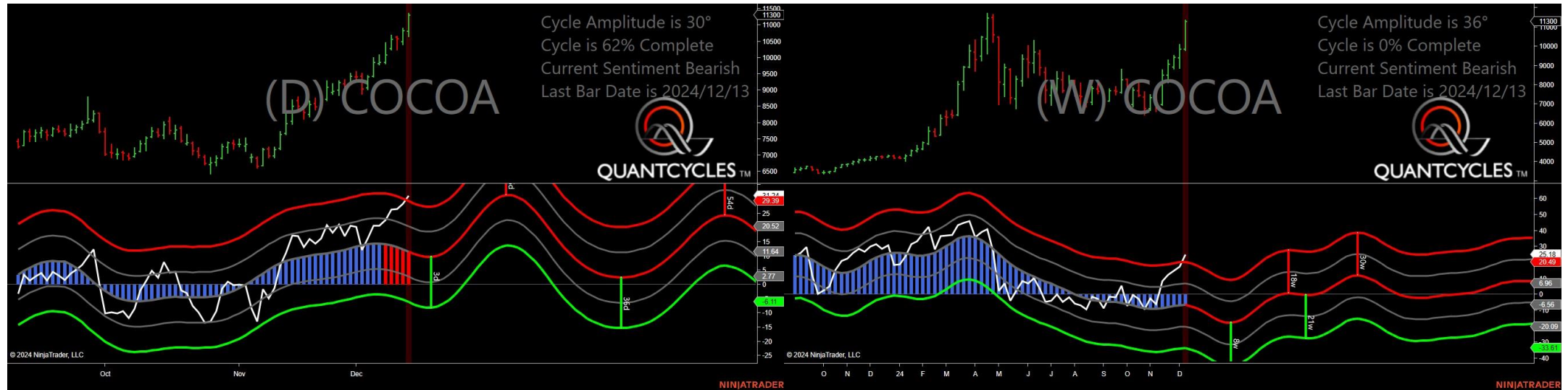
1 Dual Extremes

- CC - Cocoa

5 Single Extremes

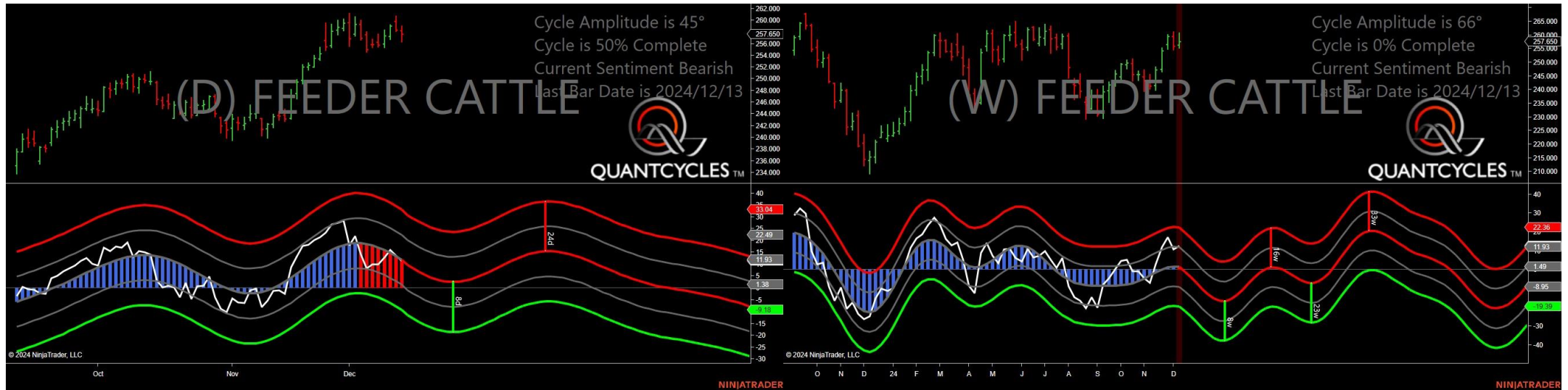
- GF - Feeder Cattle
- HE - Live Hogs
- HO - Heating Oil
- RB - Unleaded Gas
- SB - Sugar

Cocoa - Dual Extreme



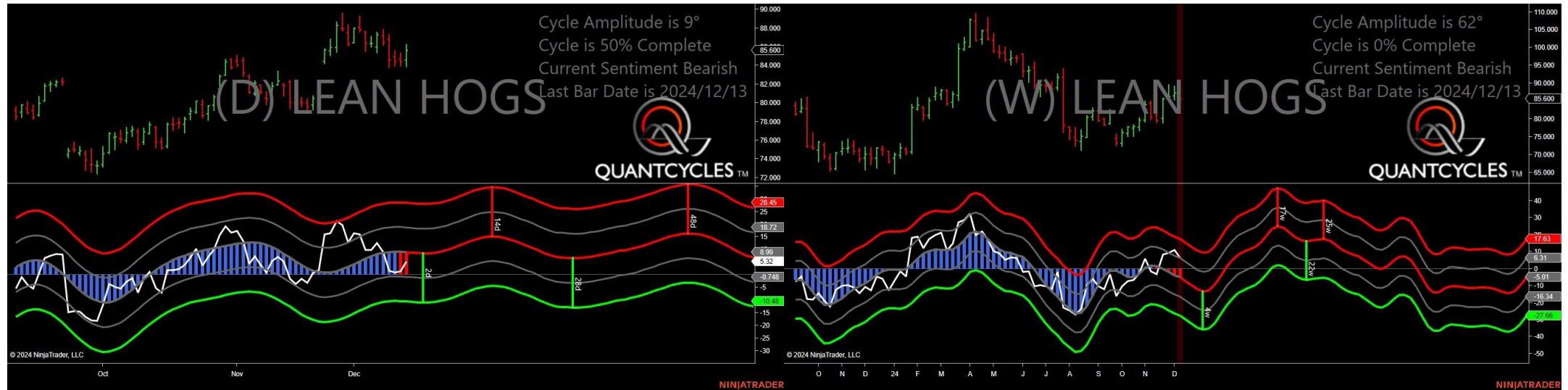
- Amplitude is 30° - Good
- Direction Accuracy is 0%
- Market is at Resistance Extreme - Expect market consolidation Between \$11365 and \$11300

Feeder Cattle - Single Weekly Extreme



- Amplitude is 45° - Strong
- Direction Accuracy is 0%
- Market is at Resistance Extreme - Expect market consolidation Between \$259.025 and \$258.2

Live Hogs - Single Weekly Extreme



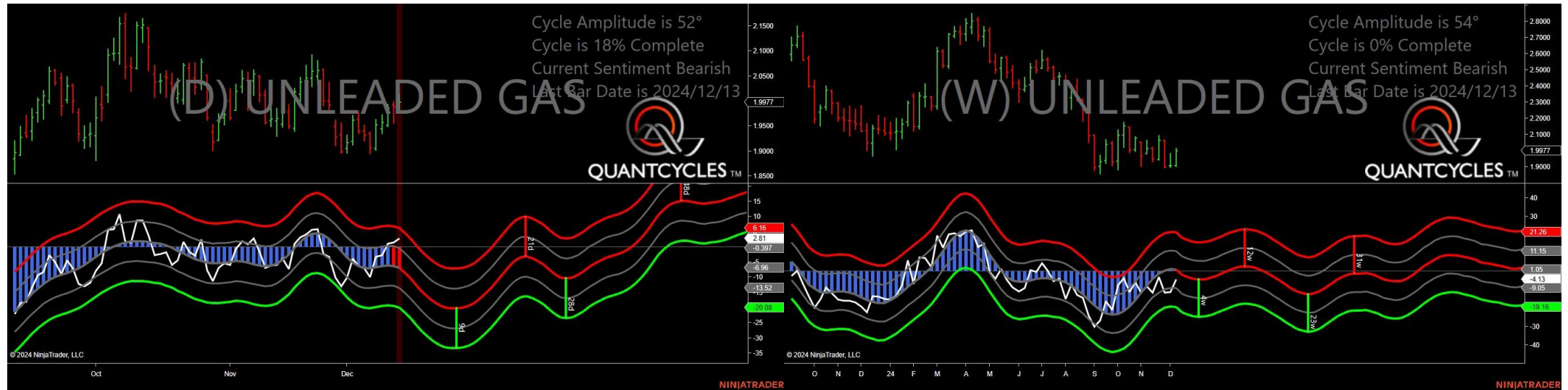
- Amplitude is 9° - Weak
- Direction Accuracy is 0%
- Market is at Resistance Extreme - Expect market consolidation Between \$86.25 and \$85.6

Heating Oil - Single Daily Extreme



- Amplitude is 50° - Strong
- Direction Accuracy is 0%
- Market is at Resistance Extreme - Expect market consolidation Between \$2.2755 and \$2.2683

Unleaded Gas - Single Daily Extreme



- Amplitude is 52° - Strong
- Direction Accuracy is 0%
- Market is at Resistance Extreme - Expect market consolidation Between \$2.013 and \$1.9977

Sugar - Single Weekly Extreme



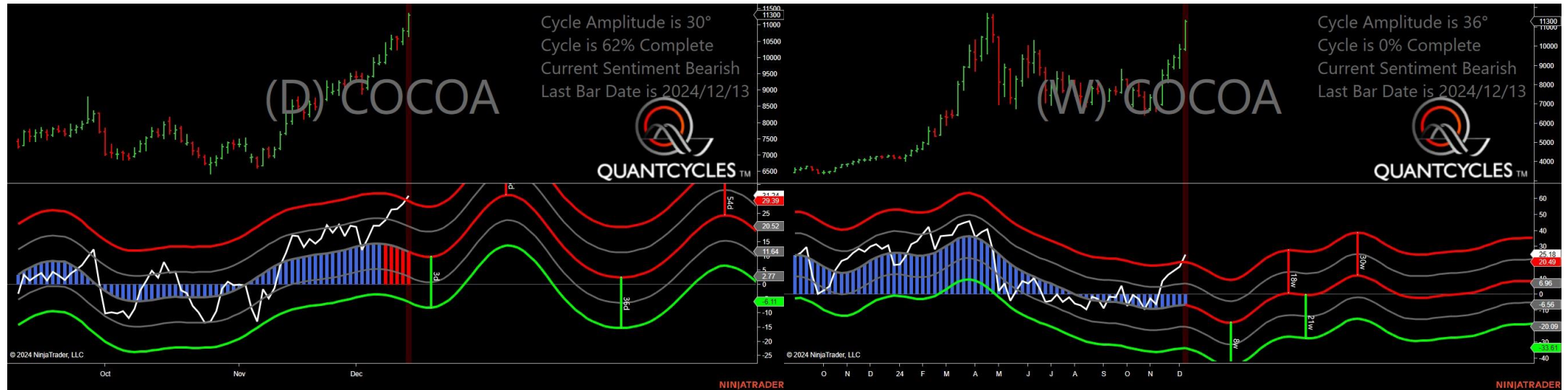
- Amplitude is 19° - Weak
- Direction Accuracy is 0%
- Market is at Resistance Extreme - Expect market consolidation Between \$20.97 and \$20.95

Analysis Charts

17 Charts

- CL - Crude Oil
- CT - Cotton
- GC - Gold
- HG - Copper
- KC - Coffee
- LE - Live Cattle
- NG - Natural Gas
- OJ - Oranje Juice
- PA - Palladium
- PL - Platinum
- SI - Silver
- ZC - Corn
- ZL - Soybean Oil
- ZM - Soybean Meal
- ZO - Oats
- ZS - Soybeans
- ZW - Wheat

Cocoa - Analysis Chart



- Amplitude is 30° - Good
- Direction Accuracy is 0%
- Market is at Resistance Extreme - Expect market consolidation Between \$11365 and \$11300

Crude Oil - Analysis Chart



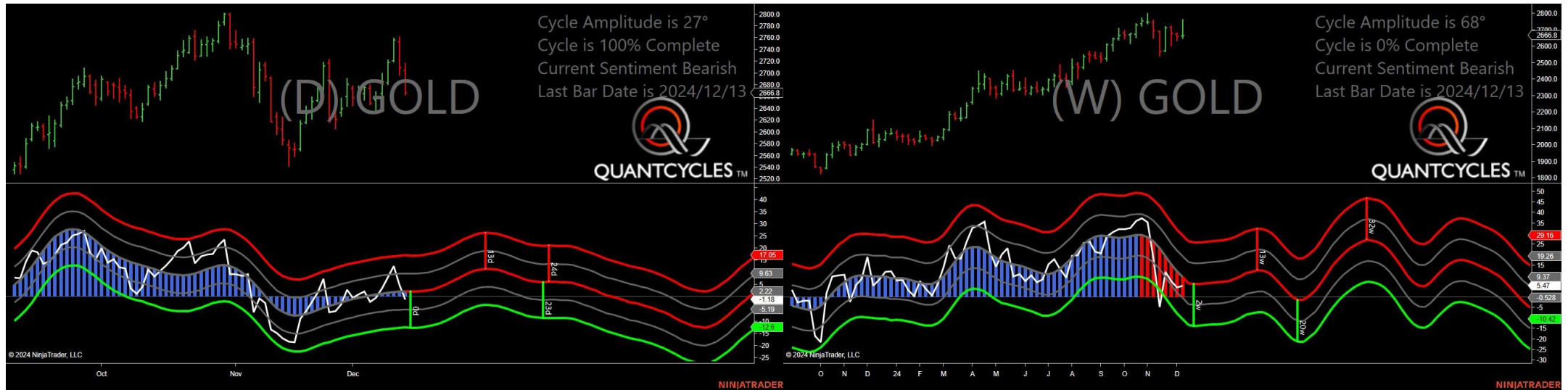
- Amplitude is 30° - Good
- Direction Accuracy is 50%
- Market is at Support Extreme - Expect market consolidation Between \$70.06 and \$69.87

Cotton - Analysis Chart



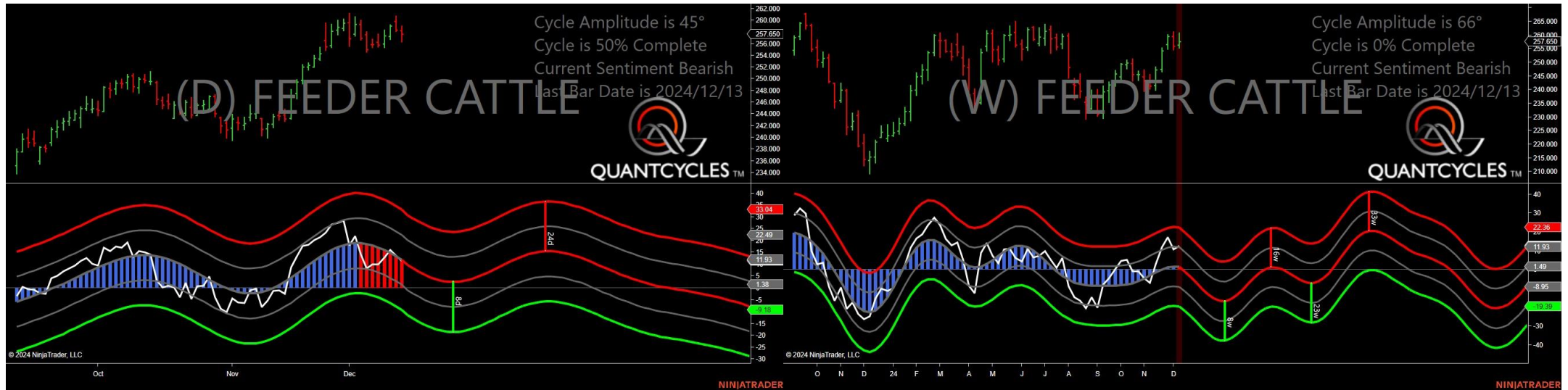
- Amplitude is 27° - Good
- Direction Accuracy is 50%
- Market is at Support Extreme - Expect market consolidation Between \$69.27 and \$69.2

Gold - Analysis Chart



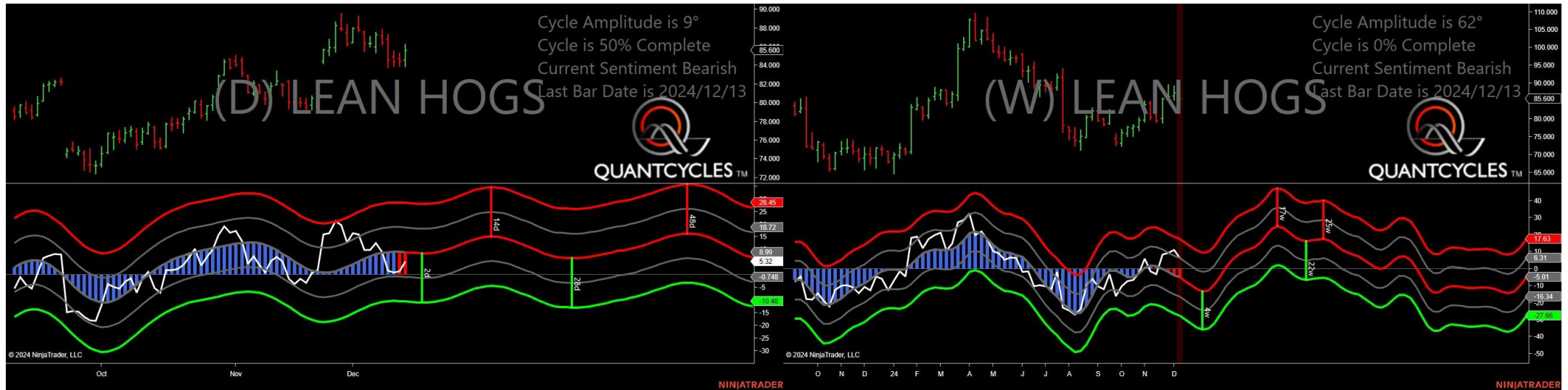
- Amplitude is 27° - Good
- Direction Accuracy is 0%
- Market is at Resistance Extreme - Expect market consolidation Between \$2716.4 and \$2704.9

Feeder Cattle - Analysis Chart



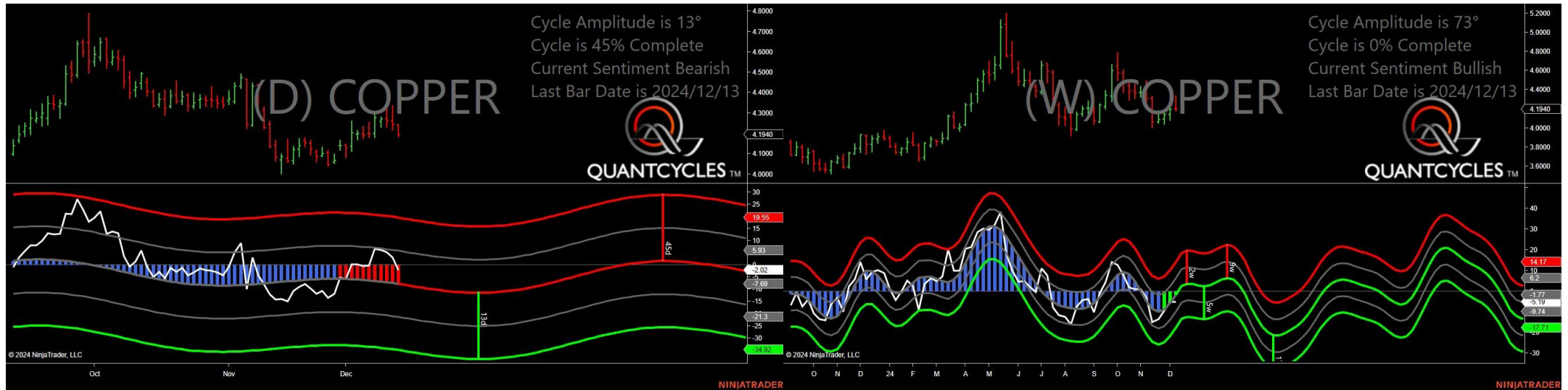
- Amplitude is 45° - Strong
- Direction Accuracy is 0%
- Market is at Resistance Extreme - Expect market consolidation Between \$259.025 and \$258.2

Live Hogs - Analysis Chart



- Amplitude is 9° - Weak
- Direction Accuracy is 0%
- Market is at Resistance Extreme - Expect market consolidation Between \$86.25 and \$85.6

Copper - Analysis Chart



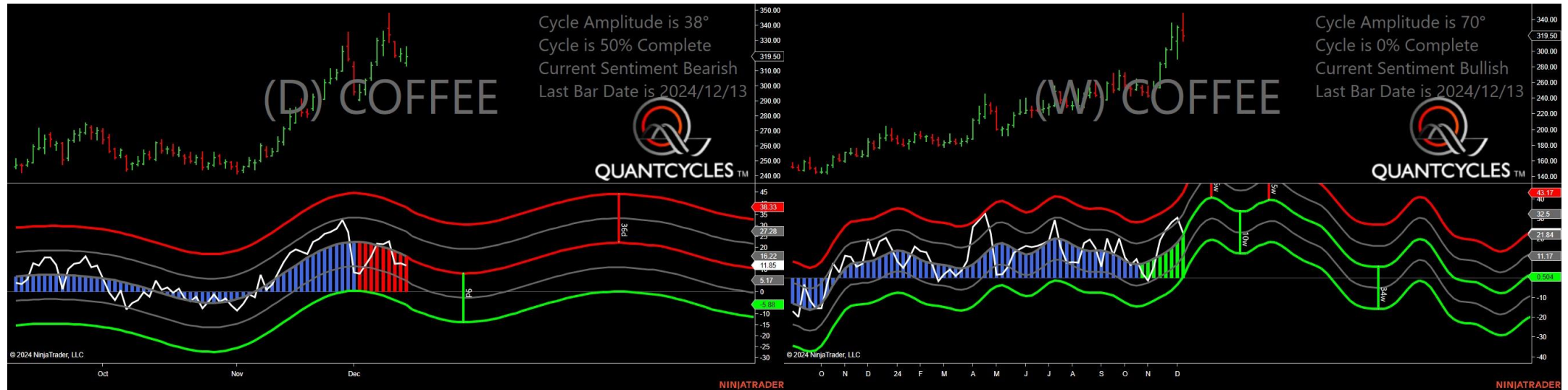
- Amplitude is 13° - Weak
- Direction Accuracy is 0%
- Market is at Resistance Extreme - Expect market consolidation Between \$4.2435 and \$4.2415

Heating Oil - Analysis Chart



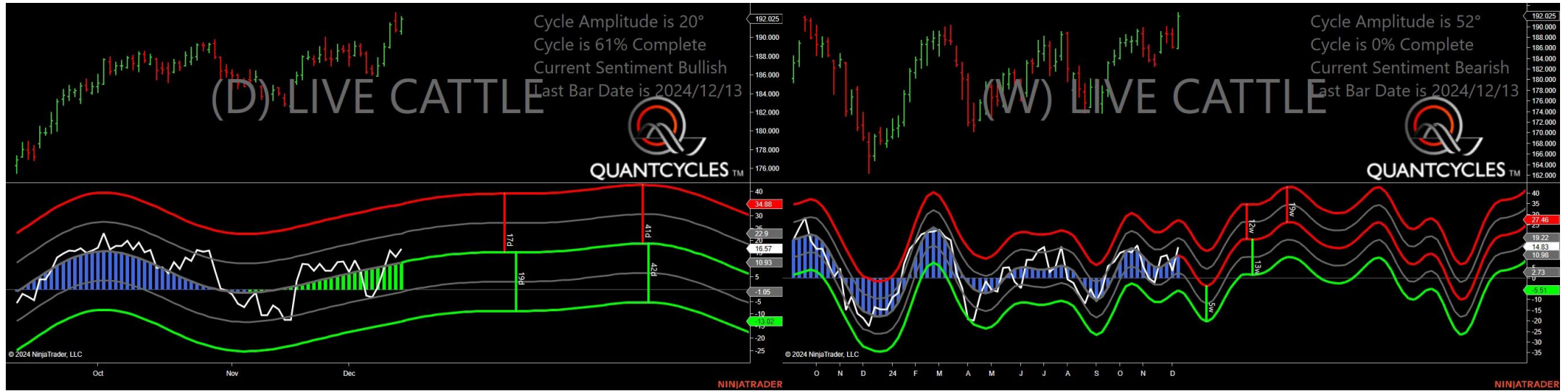
- Amplitude is 50° - Strong
- Direction Accuracy is 0%
- Market is at Resistance Extreme - Expect market consolidation Between \$2.2755 and \$2.2683

Coffee - Analysis Chart



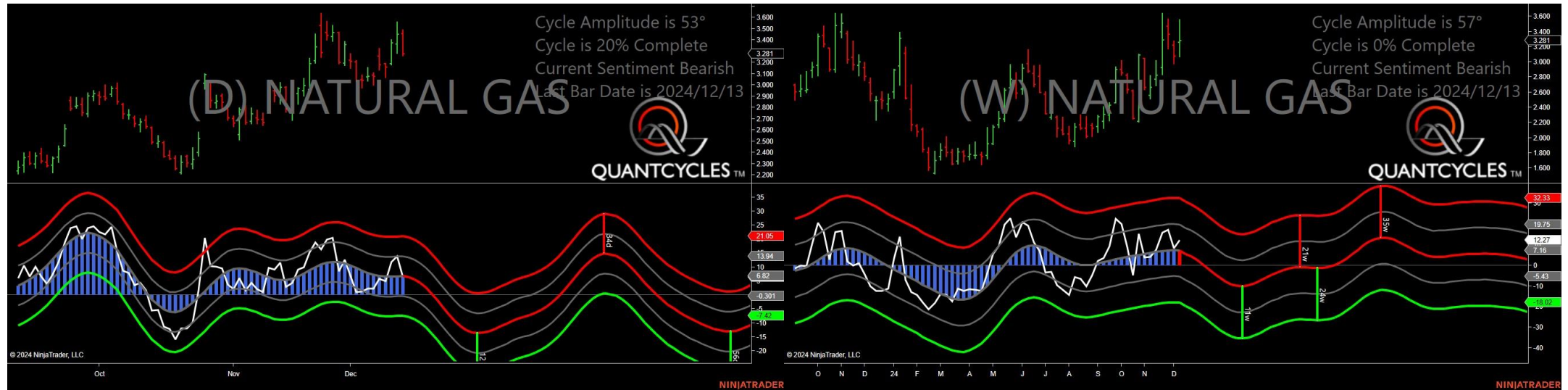
- Amplitude is 38° - Good
- Direction Accuracy is 0%
- Market is at Resistance Extreme - Expect market consolidation Between \$326 and \$319.5

Live Cattle - Analysis Chart



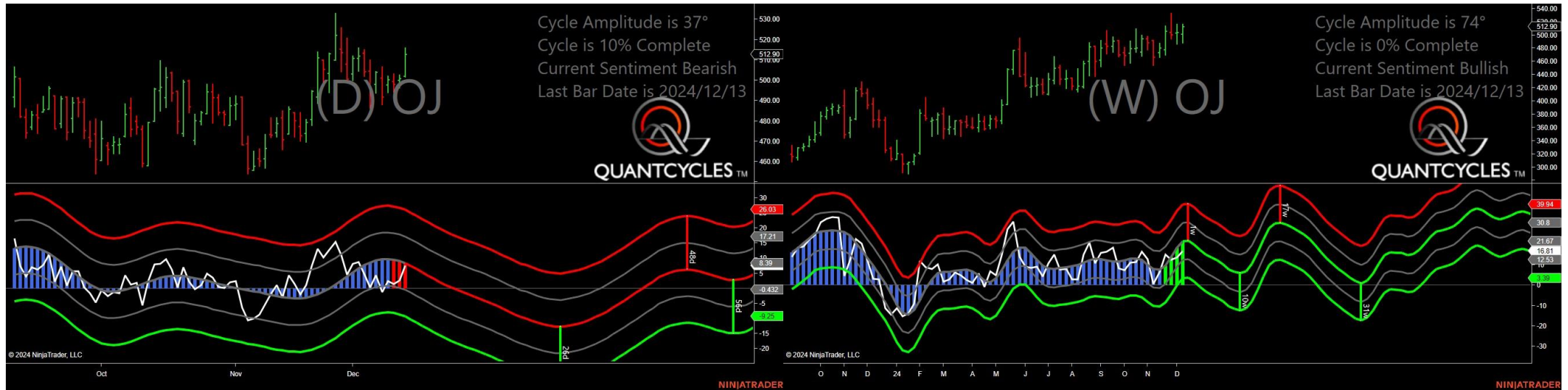
- Amplitude is 20° - Weak
- Direction Accuracy is 50%
- Market is at Support Extreme - Expect market consolidation Between \$190.7 and \$190.375

Natural Gas - Analysis Chart



- Amplitude is 53° - Strong
- Direction Accuracy is 0%
- Market is at Resistance Extreme - Expect market consolidation Between \$3.489 and \$3.458

Oranje Juice - Analysis Chart



- Amplitude is 37° - Good
- Direction Accuracy is 0%
- Market is at Resistance Extreme - Expect market consolidation Between \$516 and \$512.9

Palladium - Analysis Chart



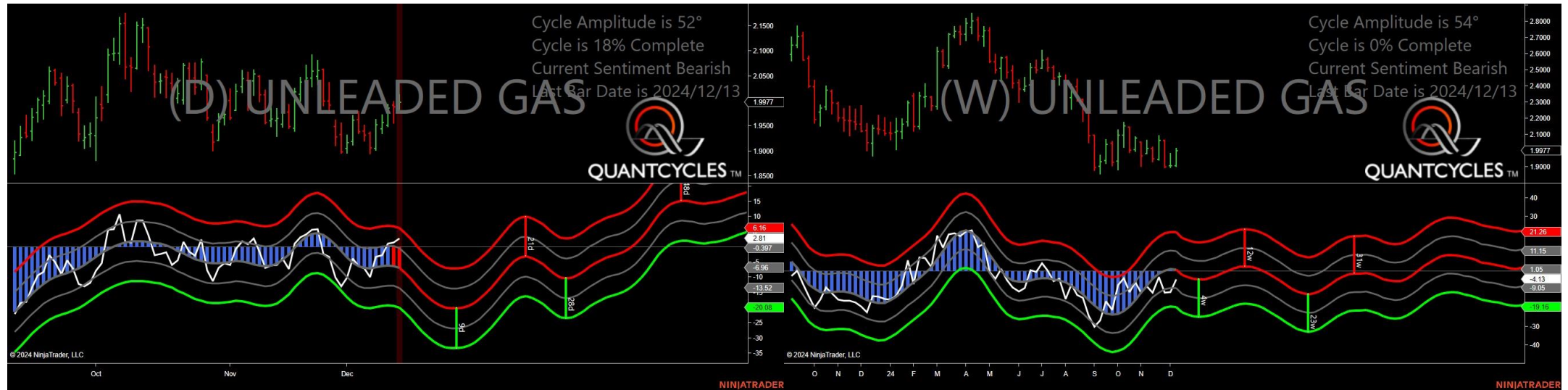
- Amplitude is 7° - Weak
- Direction Accuracy is 0%
- Market is at Resistance Extreme - Expect market consolidation Between \$992 and \$987.5

Platinum - Analysis Chart



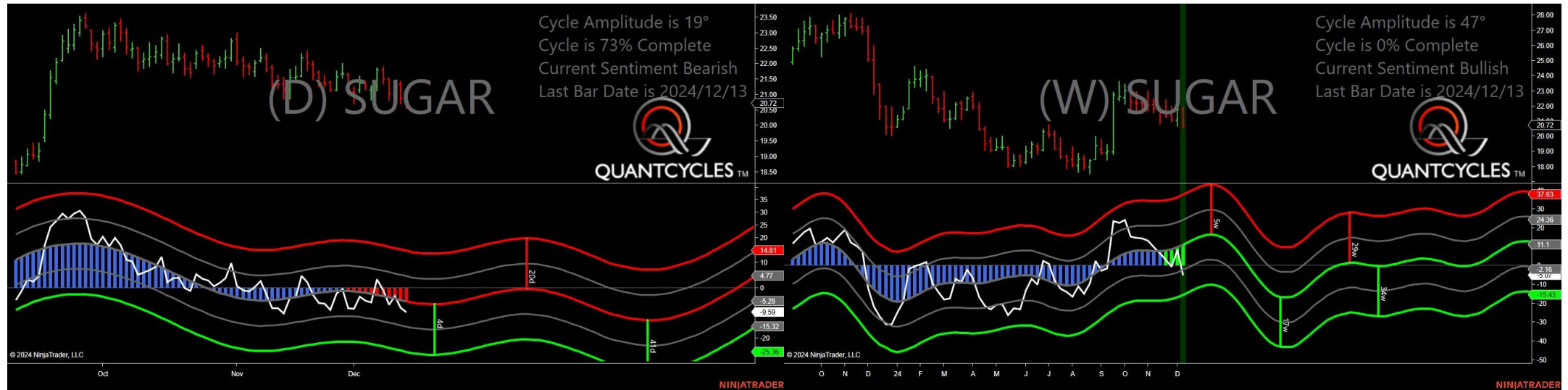
- Amplitude is 50° - Strong
- Direction Accuracy is 0%
- Market is at Resistance Extreme - Expect market consolidation Between \$945.4 and \$940

Unleaded Gas - Analysis Chart



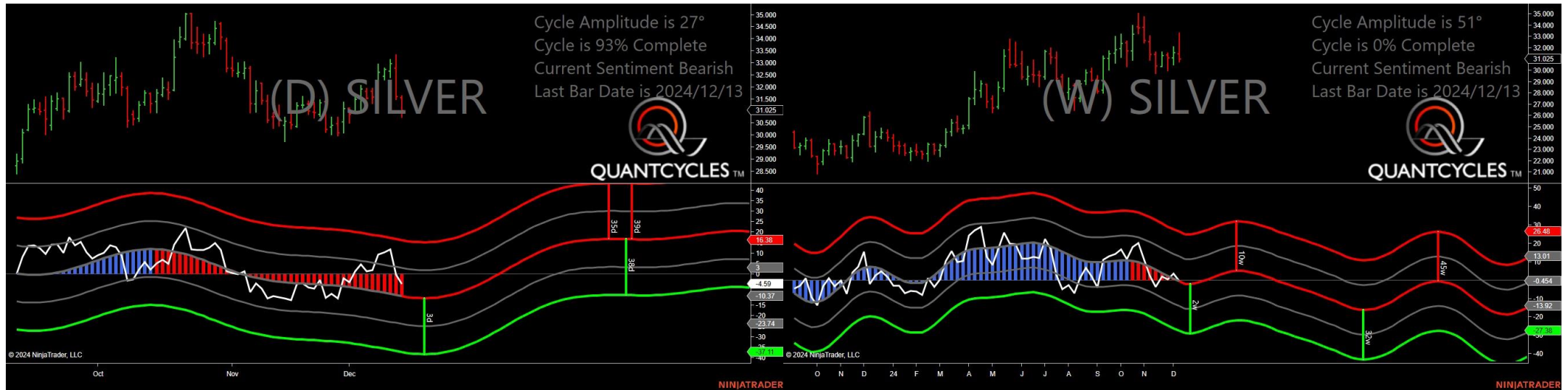
- Amplitude is 52° - Strong
- Direction Accuracy is 0%
- Market is at Resistance Extreme - Expect market consolidation Between \$2.013 and \$1.9977

Sugar - Analysis Chart



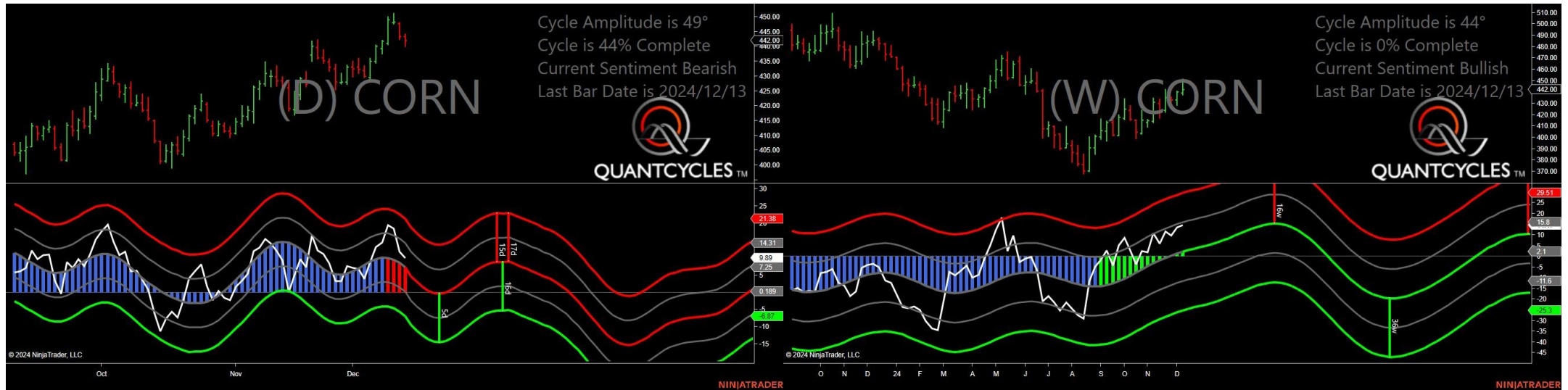
- Amplitude is 19° - Weak
- Direction Accuracy is 0%
- Market is at Resistance Extreme - Expect market consolidation Between \$20.97 and \$20.95

Silver - Analysis Chart



- Amplitude is 27° - Good
- Direction Accuracy is 0%
- Market is at Resistance Extreme - Expect market consolidation Between \$31.63 and \$31.56

Corn - Analysis Chart



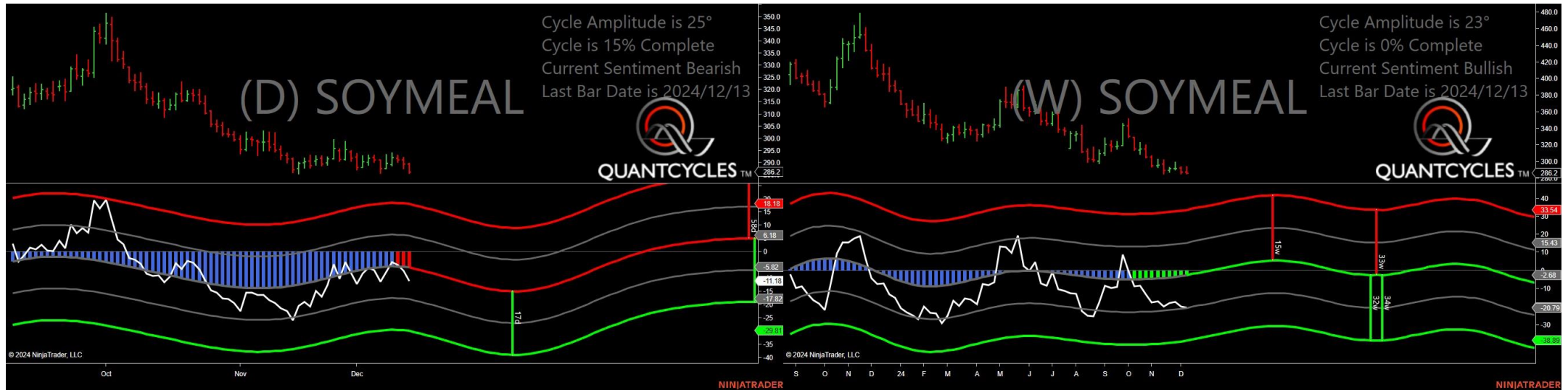
- Amplitude is 49° - Strong
- Direction Accuracy is 0%
- Market is at Resistance Extreme - Expect market consolidation Between \$444.25 and \$443.5

Soybean Oil - Analysis Chart



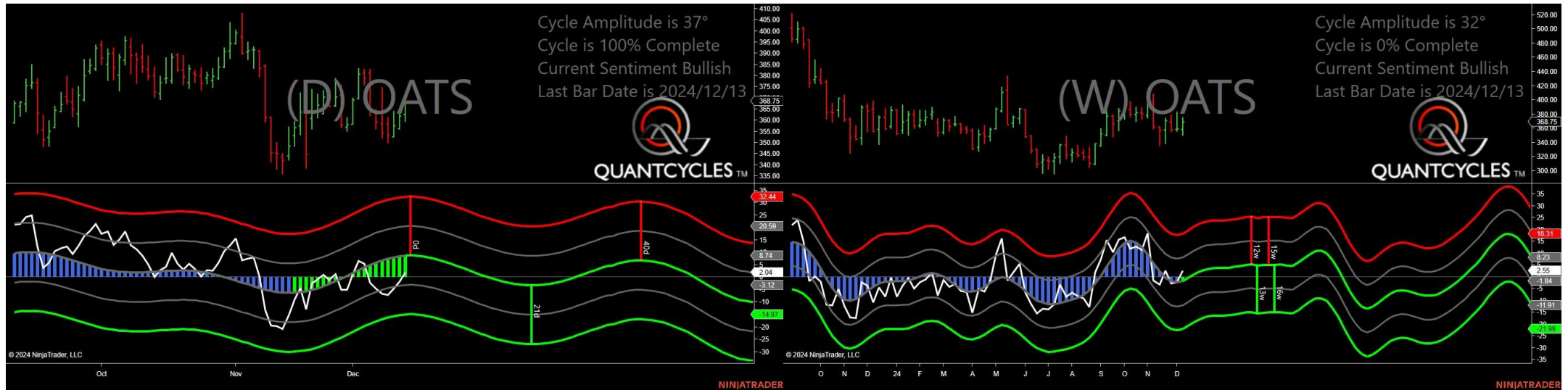
- Amplitude is 23° - Good
- Direction Accuracy is 50%
- Market is at Support Extreme - Expect market consolidation Between \$42.6 and \$42.24

Soybean Meal - Analysis Chart



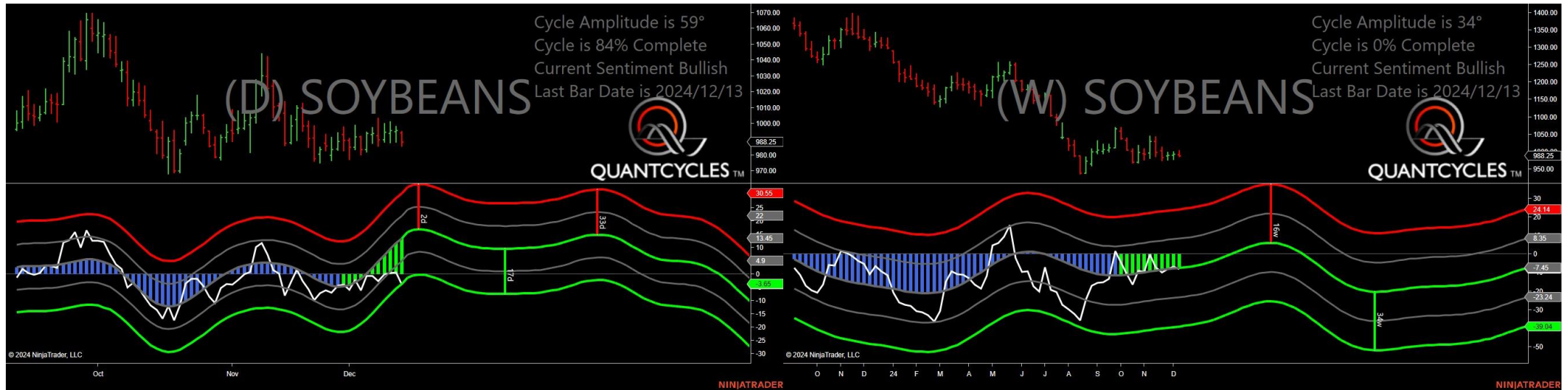
- Amplitude is 25° - Good
- Direction Accuracy is 0%
- Market is at Resistance Extreme - Expect market consolidation Between \$289.7 and \$289.5

Oats - Analysis Chart



- Amplitude is 37° - Good
- Direction Accuracy is 50%
- Market is at Support Extreme - Expect market consolidation Between \$362.75 and \$359.5

Soybeans - Analysis Chart



- Amplitude is 59° - Strong
- Direction Accuracy is 50%
- Market is at Support Extreme - Expect market consolidation Between \$988.25 and \$986

Wheat - Analysis Chart



- Amplitude is 52° - Strong
- Direction Accuracy is 0%
- Market is at Resistance Extreme - Expect market consolidation Between \$561 and \$558.75