



**QUANTCYCLES**

**COMMODITIES**

**OPPORTUNITIES & EXTREMES**

# About This Document

- This document contains two cyclical market patterns based on the QuantCycles Cycle Analysis Software
- **Cycle Continuation Opportunity** – These are defined as a deviation of the forecast direction that extend to the upper or lower extremes. There is a high probability that the market will return to the forecast direction within a projected time frame. A Dual Opportunity has a higher probability of returning to the forecast direction than a Single Opportunity.
  - Always look for market commonality. For example, if you're looking at a DOW30 stock to buy, does the index look positive as well?
  - As the market approaches the cycle forecast turning point, the probability of the market following that direction decays. This is indicated by the "Cycle Percent Complete" note at the top of the chart, as well as predicted duration dates
  - At an Opportunity, a strong market may continue to go against the forecast trend, therefore, we recommend waiting for confirmation of the turning point before acting on it.
  - If the Market has not returned to the direction of the cycle by the minimum expected cycle duration date, consider the cycle incorrect.
- **Cycle Extreme** – These are defined as a deviation of the forecast direction, but with a lessor probability of return to the forecast direction. A Dual Extreme is a stronger Support / Resistance than a Single Extreme.
  - The Cycle Continuation Opportunity information above applies here as well, but can be utilized more to take profits than to consider for entry
  - Indicates that a market is at or near a Cycle Support or Resistance.
  - There is a high probability of a market stall.

# Analysis Overview

- 1 Dual Extremes
- 7 Single Extremes
- 15 Analysis

# Cycle Extremes

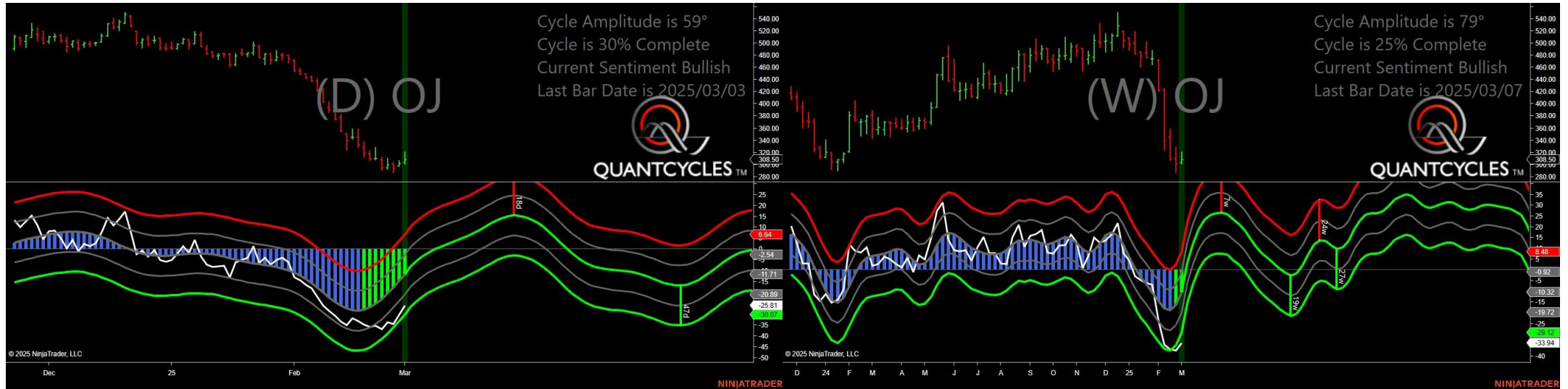
## 1 Dual Extremes

- OJ - Oranje Juice

## 7 Single Extremes

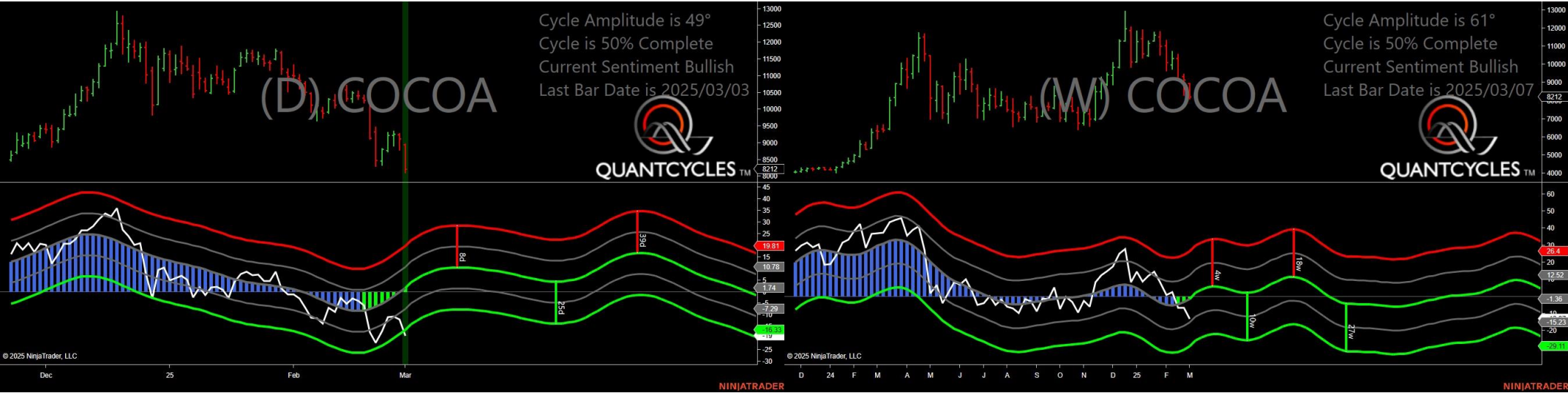
- CC - Cocoa
- CT - Cotton
- HE - Live Hogs
- HO - Heating Oil
- NG - Natural Gas
- RB - Unleaded Gas
- ZL - Soybean Oil

# Oranje Juice - Dual Extreme



- Amplitude is 59° - Strong
- Direction Accuracy is 50%
- Market is at Support Extreme - Expect market consolidation Between \$303.4 and \$301.8

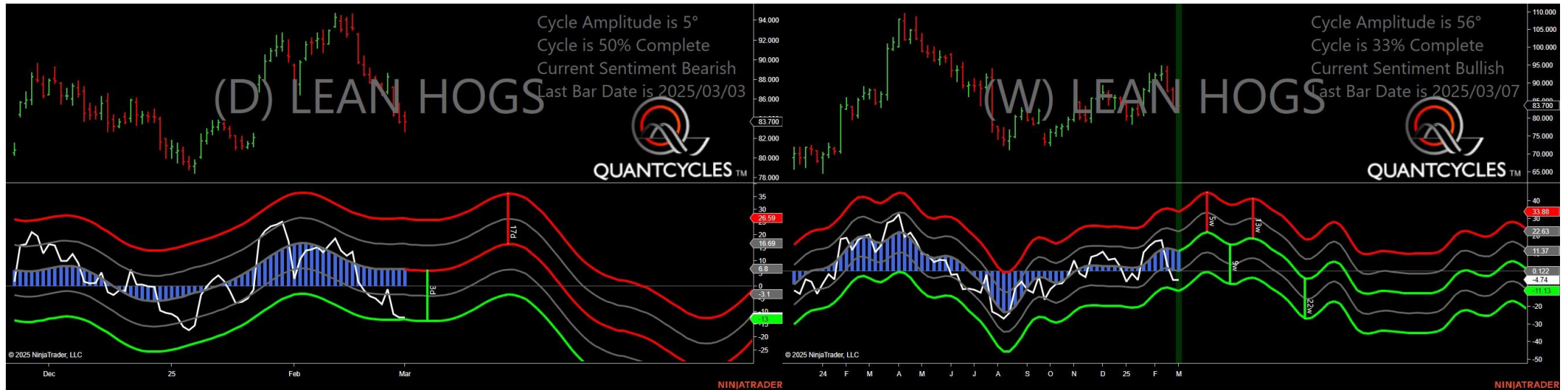
# Cocoa - Single Daily Extreme



- Amplitude is 49° - Strong
- Direction Accuracy is 50%
- Market is at Support Extreme - Expect market consolidation Between \$8212 and \$8105



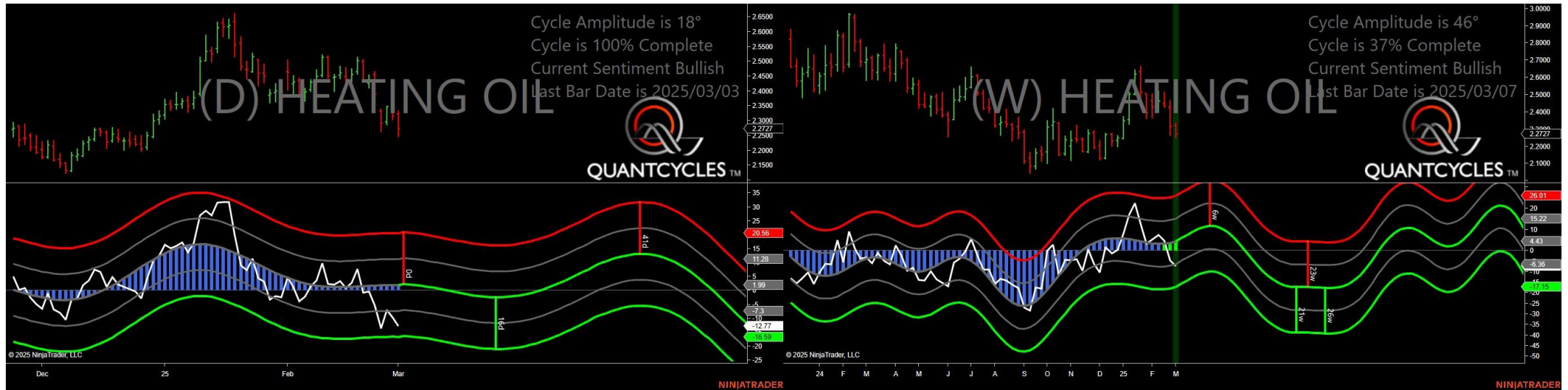
# Live Hogs - Single Weekly Extreme



- Amplitude is 5° - Weak
- Direction Accuracy is 0%
- Market is at Resistance Extreme - Expect market consolidation Between \$84.675 and \$84.3



# Heating Oil - Single Weekly Extreme



- Amplitude is 18° - Weak
- Direction Accuracy is 50%
- Market is at Support Extreme - Expect market consolidation Between \$2.2727 and \$2.2479

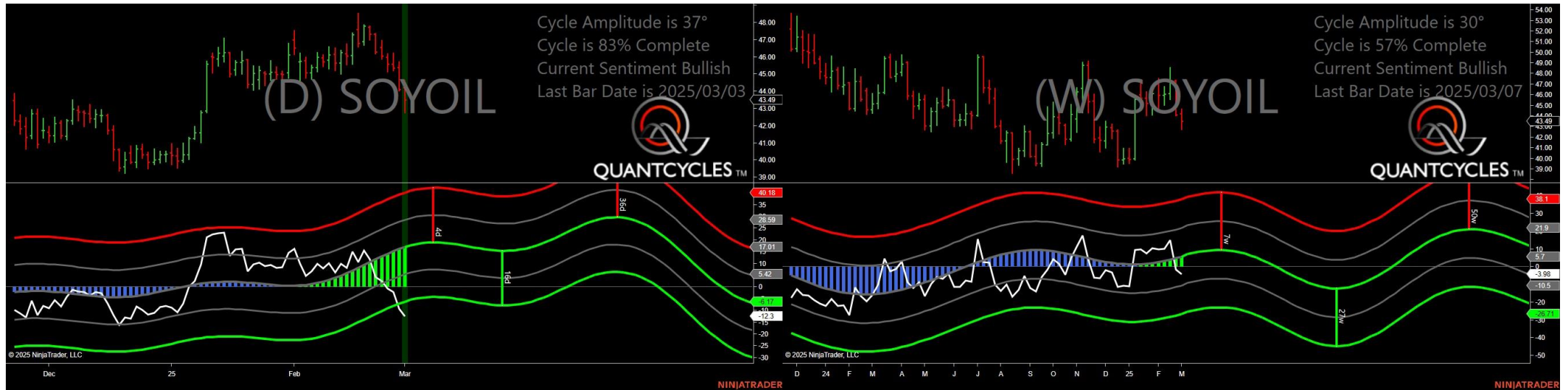


# Unleaded Gas - Single Weekly Extreme



- Amplitude is 45° - Strong
- Direction Accuracy is 50%
- Market is at Support Extreme - Expect market consolidation Between \$2.1952 and \$2.1764

# Soybean Oil - Single Daily Extreme



- Amplitude is 37° - Good
- Direction Accuracy is 50%
- Market is at Support Extreme - Expect market consolidation Between \$43.49 and \$42.77

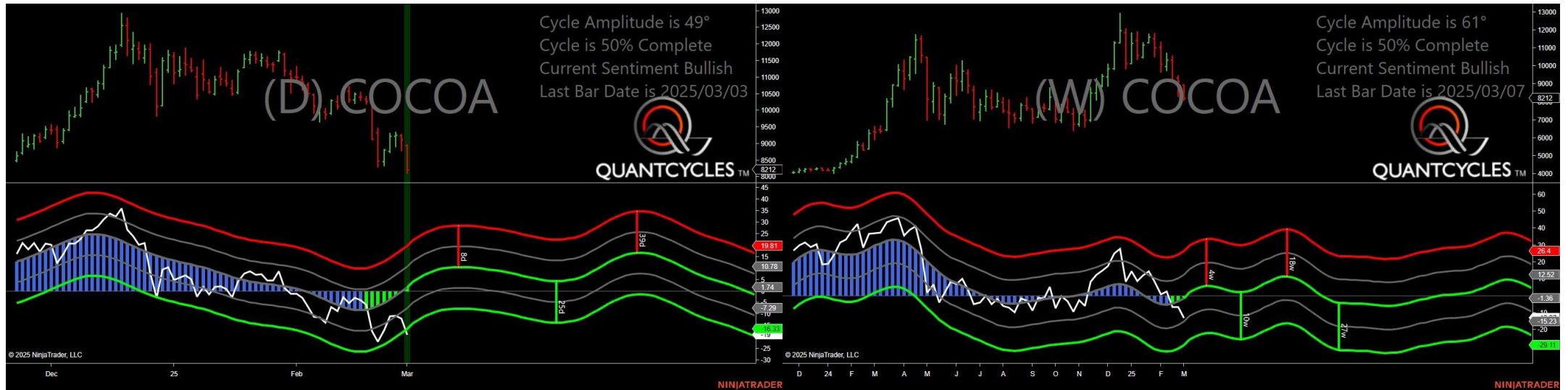
# Analysis Charts

## 15 Charts

- CL - Crude Oil
- GC - Gold
- GF - Feeder Cattle
- HG - Copper
- KC - Coffee
- LE - Live Cattle
- PA - Palladium
- PL - Platinum
- SB - Sugar
- SI - Silver
- ZC - Corn
- ZM - Soybean Meal
- ZO - Oats
- ZS - Soybeans
- ZW - Wheat



# Cocoa - Analysis Chart



- Amplitude is 49° - Strong
- Direction Accuracy is 50%
- Market is at Support Extreme - Expect market consolidation Between \$8212 and \$8105

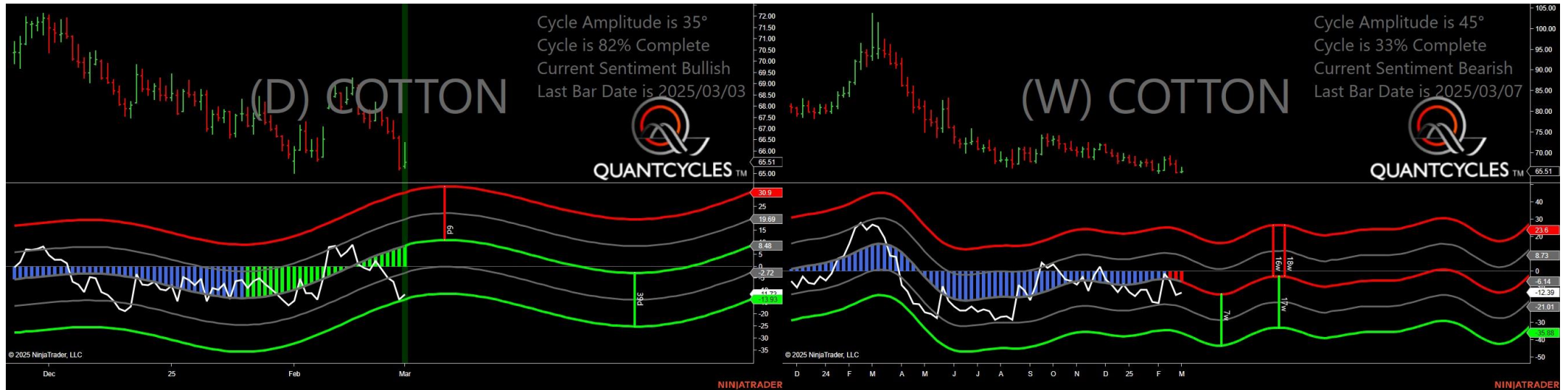
# Crude Oil - Analysis Chart



- Amplitude is 14° - Weak
- Direction Accuracy is 0%
- Market is at Resistance Extreme - Expect market consolidation Between \$70.59 and \$69.95

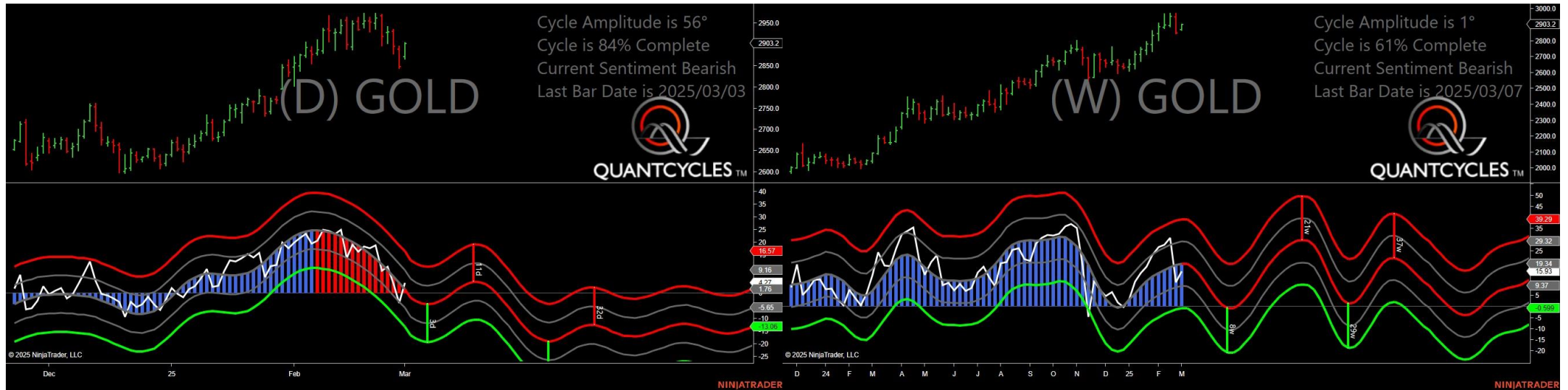


# Cotton - Analysis Chart



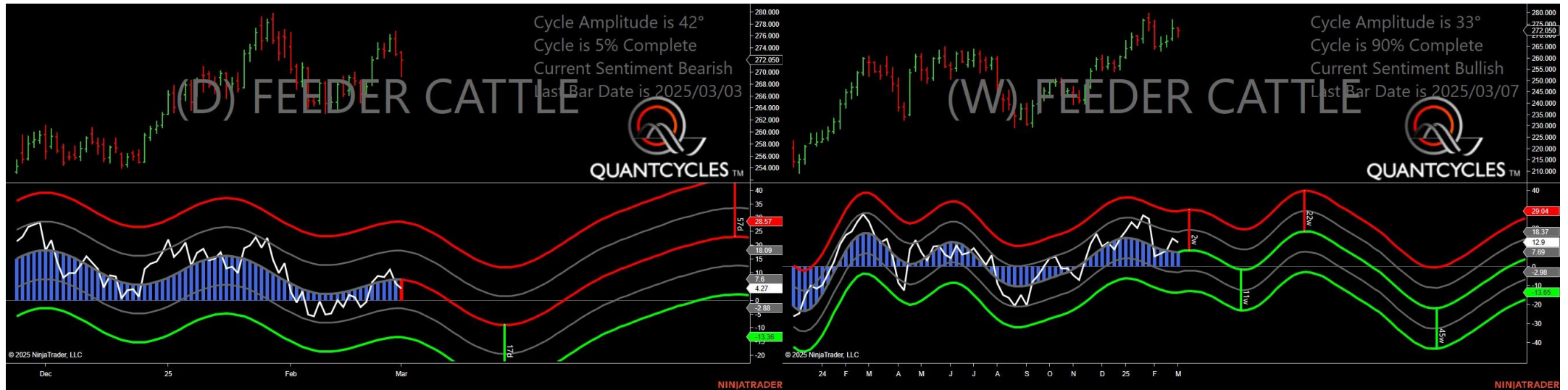
- Amplitude is 35° - Good
- Direction Accuracy is 50%
- Market is at Support Extreme - Expect market consolidation Between \$65.33 and \$65.26

# Gold - Analysis Chart



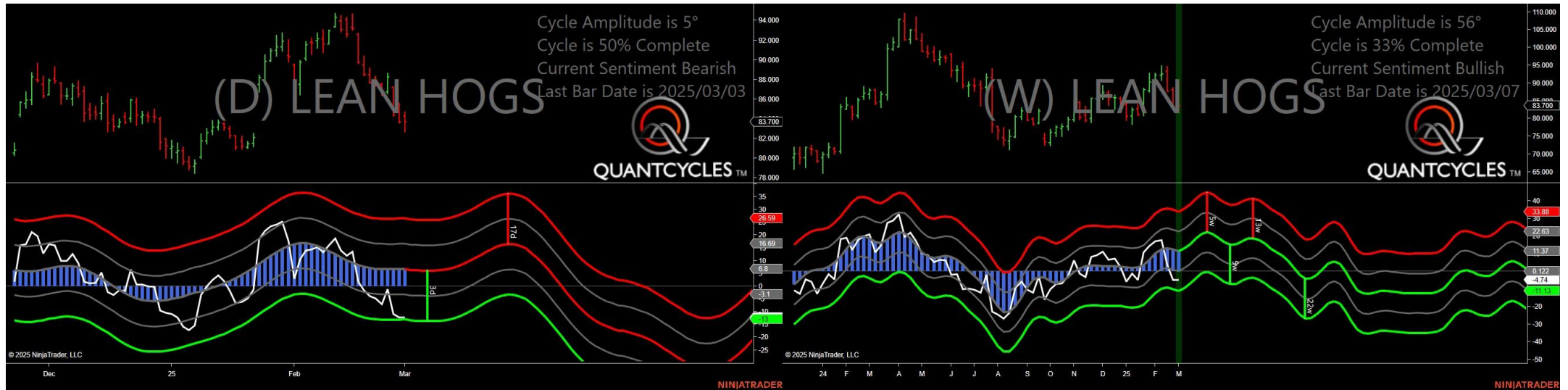
- Amplitude is 56° - Strong
- Direction Accuracy is 0%
- Market is at Resistance Extreme - Expect market consolidation Between \$2904.2 and \$2903.2

# Feeder Cattle - Analysis Chart



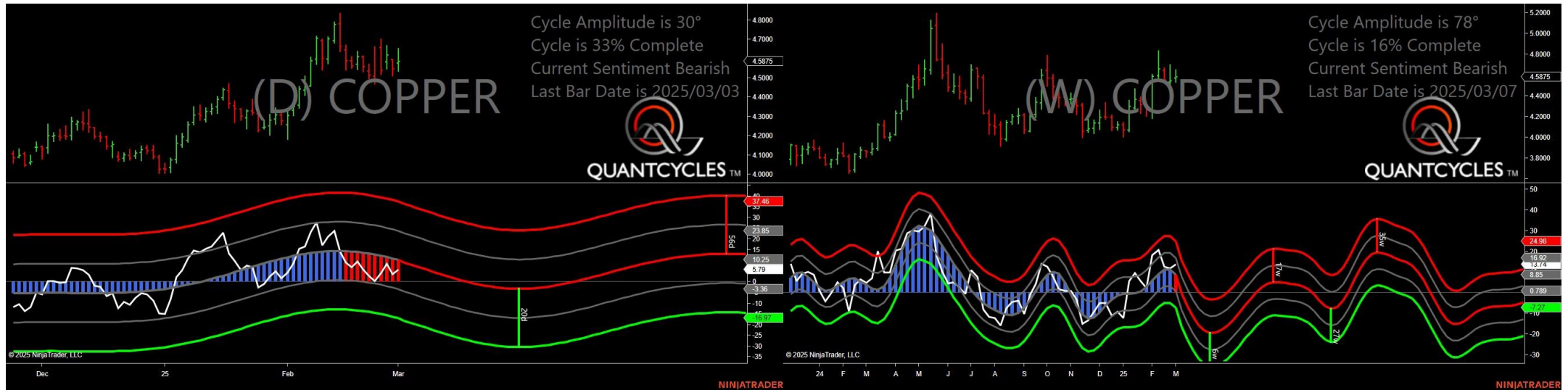
- Amplitude is 42° - Strong
- Direction Accuracy is 0%
- Market is at Resistance Extreme - Expect market consolidation Between \$273.5 and \$273.25

# Live Hogs - Analysis Chart



- Amplitude is 5° - Weak
- Direction Accuracy is 0%
- Market is at Resistance Extreme - Expect market consolidation Between \$84.675 and \$84.3

# Copper - Analysis Chart



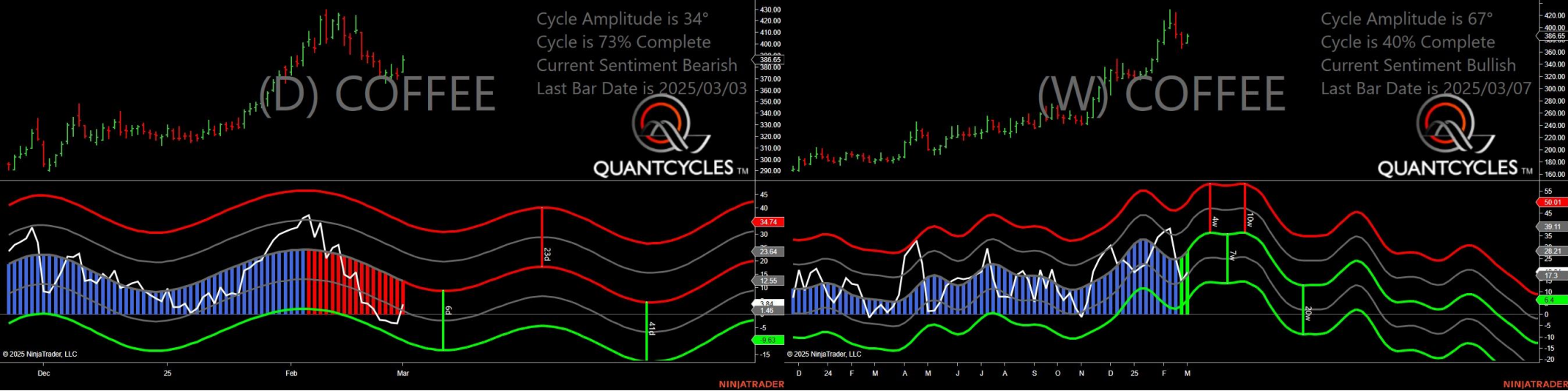
- Amplitude is 30° - Good
- Direction Accuracy is 0%
- Market is at Resistance Extreme - Expect market consolidation Between \$4.6535 and \$4.5875

# Heating Oil - Analysis Chart



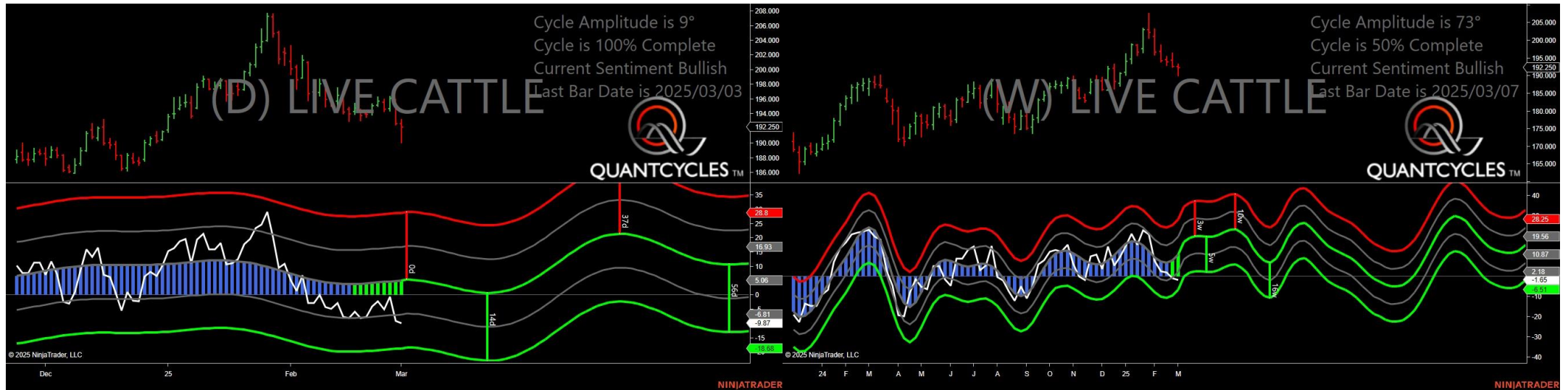
- Amplitude is 18° - Weak
- Direction Accuracy is 50%
- Market is at Support Extreme - Expect market consolidation Between \$2.2727 and \$2.2479

# Coffee - Analysis Chart



- Amplitude is 34° - Good
- Direction Accuracy is 0%
- Market is at Resistance Extreme - Expect market consolidation Between \$389.95 and \$386.65

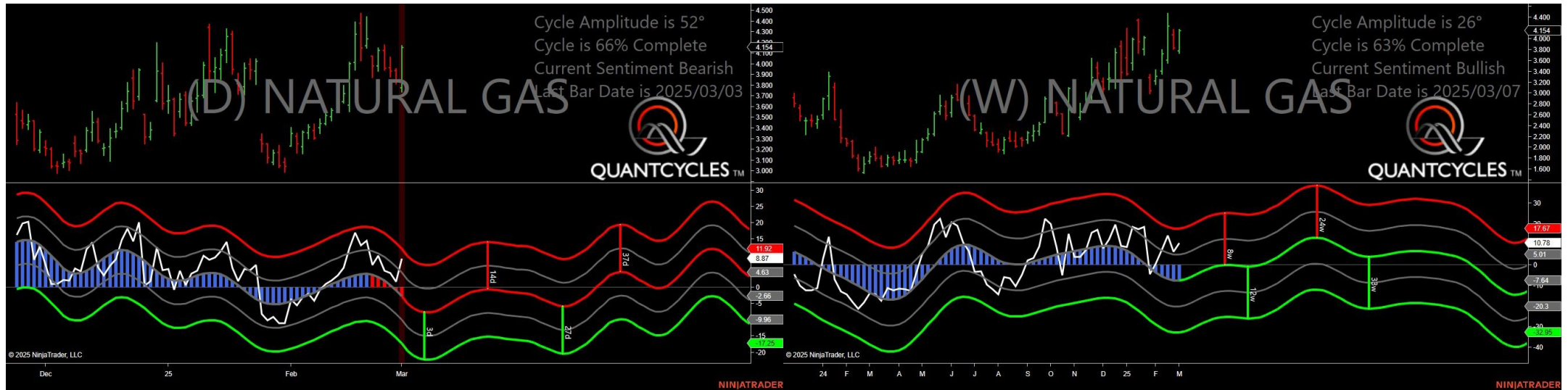
# Live Cattle - Analysis Chart



- Amplitude is 9° - Weak
- Direction Accuracy is 50%
- Market is at Support Extreme - Expect market consolidation Between \$192.25 and \$190.1

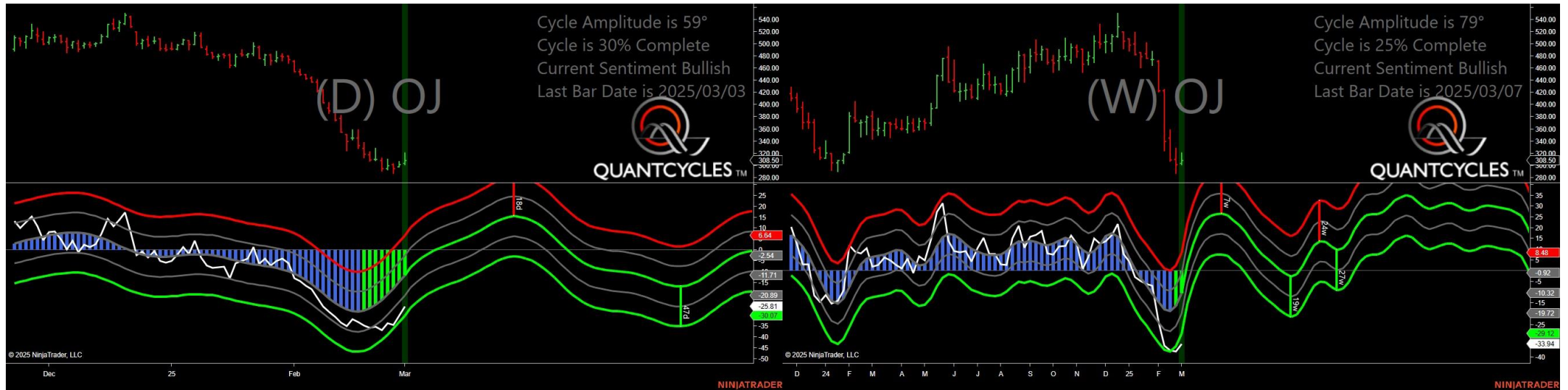


# Natural Gas - Analysis Chart



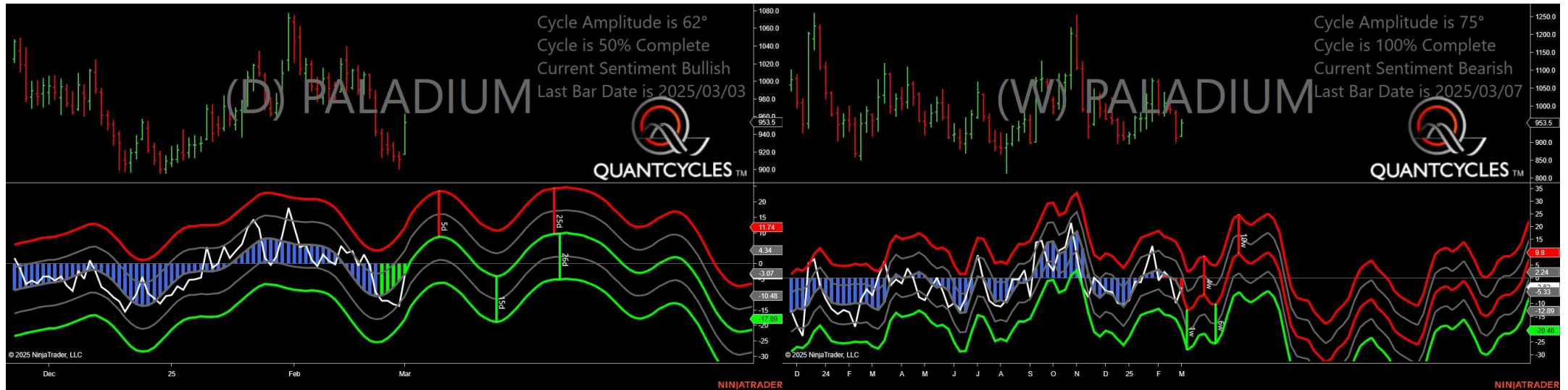
- Amplitude is 52° - Strong
- Direction Accuracy is 0%
- Market is at Resistance Extreme - Expect market consolidation Between \$4.173 and \$4.154

# Oranje Juice - Analysis Chart



- Amplitude is 59° - Strong
- Direction Accuracy is 50%
- Market is at Support Extreme - Expect market consolidation Between \$303.4 and \$301.8

# Palladium - Analysis Chart



- Amplitude is 62° - Strong
- Direction Accuracy is 50%
- Market is at Support Extreme - Expect market consolidation Between \$917.5 and \$917.5

# Platinum - Analysis Chart



- Amplitude is 46° - Strong
- Direction Accuracy is 0%
- Market is at Resistance Extreme - Expect market consolidation Between \$979.3 and \$969.7

# Unleaded Gas - Analysis Chart



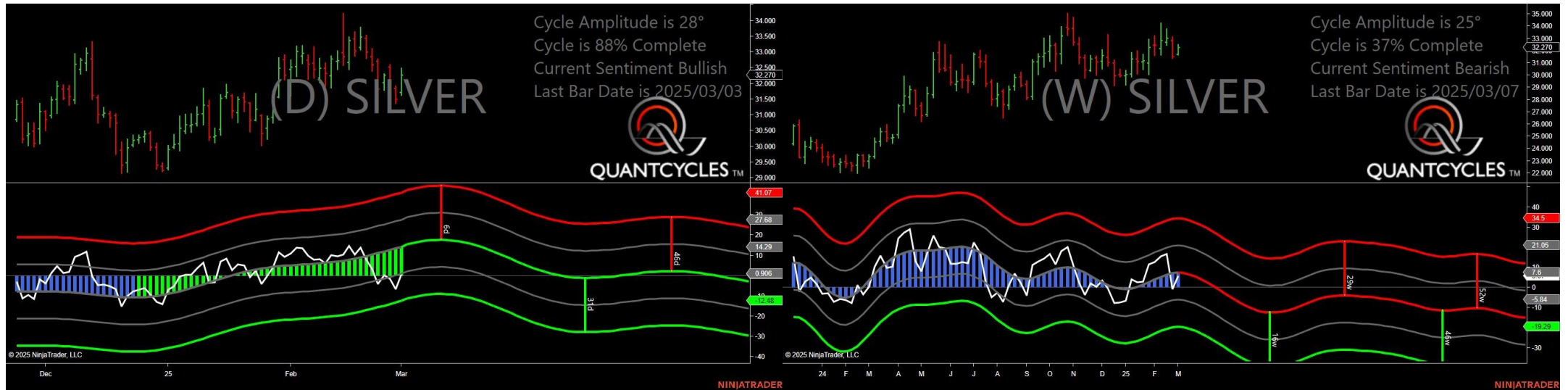
- Amplitude is 45° - Strong
- Direction Accuracy is 50%
- Market is at Support Extreme - Expect market consolidation Between \$2.1952 and \$2.1764

# Sugar - Analysis Chart



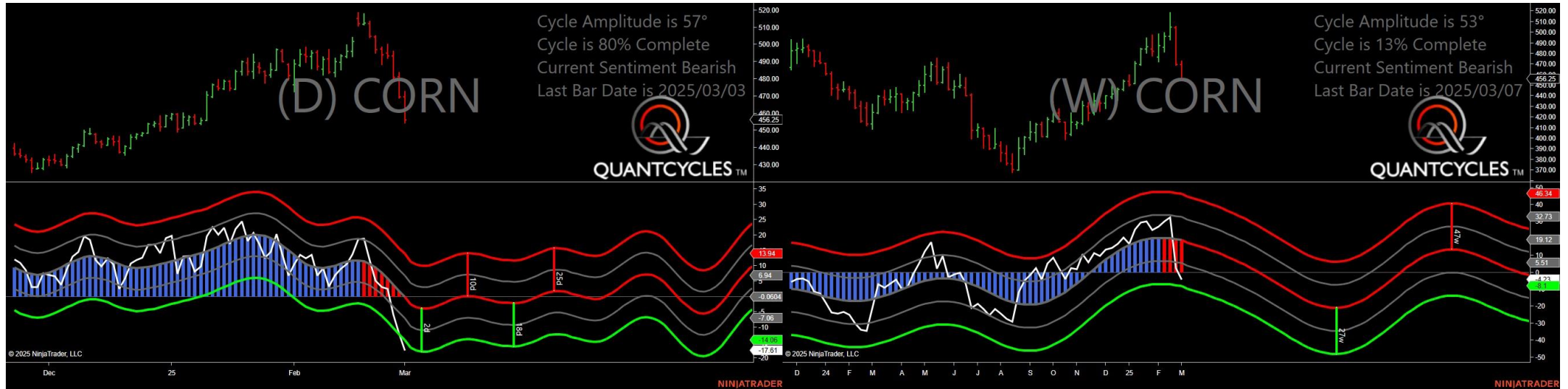
- Amplitude is 16° - Weak
- Direction Accuracy is 0%
- Market is at Resistance Extreme - Expect market consolidation Between \$18.56 and \$18.52

# Silver - Analysis Chart



- Amplitude is 28° - Good
- Direction Accuracy is 50%
- Market is at Support Extreme - Expect market consolidation Between \$31.715 and \$31.635

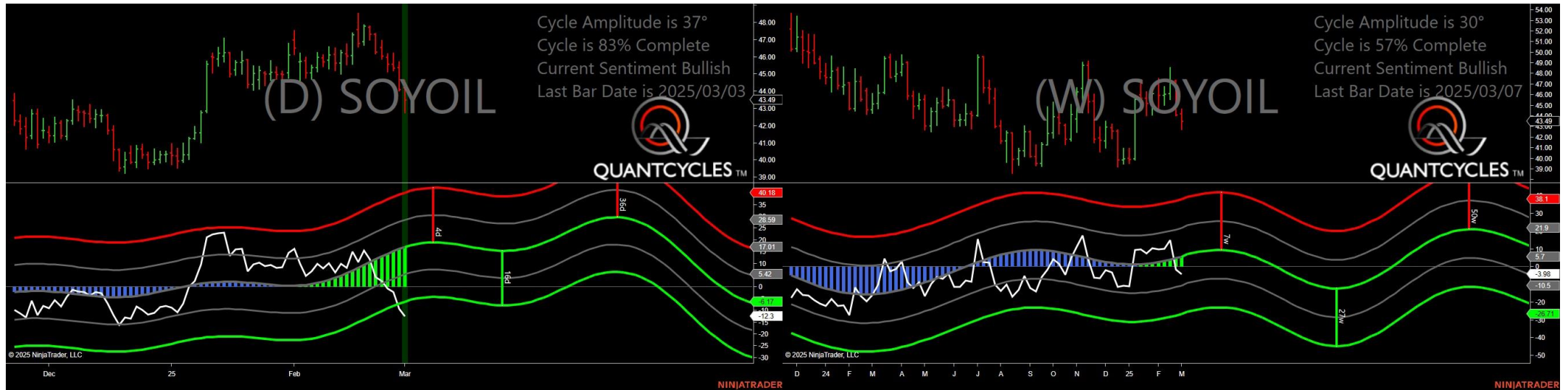
# Corn - Analysis Chart



- Amplitude is 57° - Strong
- Direction Accuracy is 0%
- Market is at Resistance Extreme - Expect market consolidation Between \$472.75 and \$469.75

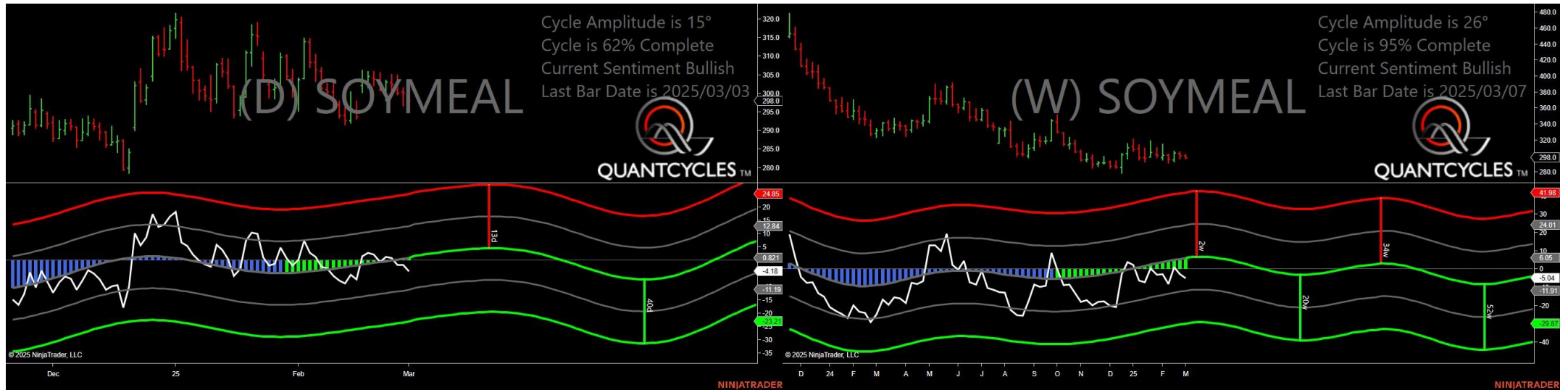


# Soybean Oil - Analysis Chart



- Amplitude is 37° - Good
- Direction Accuracy is 50%
- Market is at Support Extreme - Expect market consolidation Between \$43.49 and \$42.77

# Soybean Meal - Analysis Chart



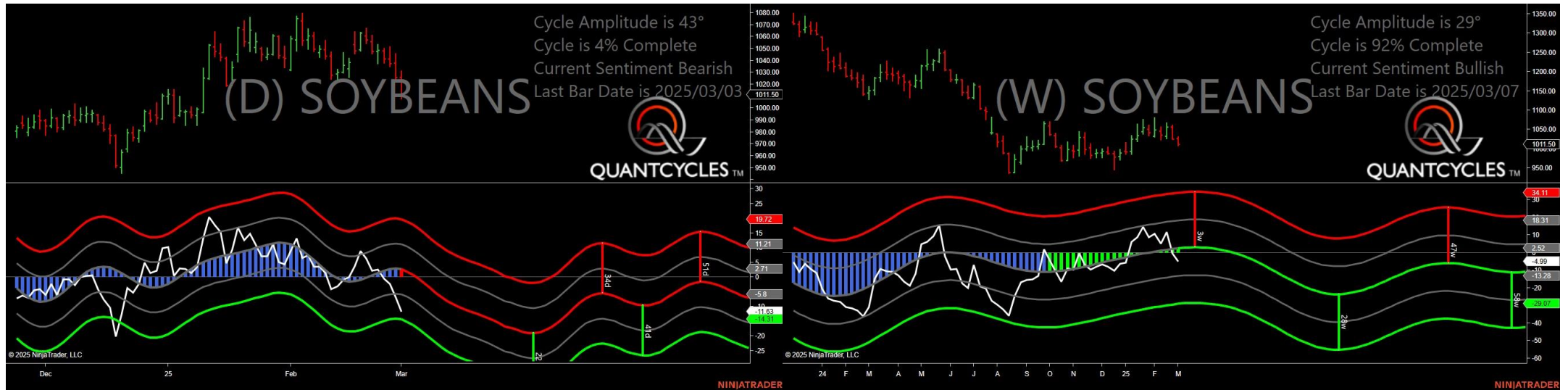
- Amplitude is 15° - Weak
- Direction Accuracy is 50%
- Market is at Support Extreme - Expect market consolidation Between \$298 and \$296.9

# Oats - Analysis Chart



- Amplitude is 16° - Weak
- Direction Accuracy is 0%
- Market is at Resistance Extreme - Expect market consolidation Between \$371 and \$369

# Soybeans - Analysis Chart



- Amplitude is 43° - Strong
- Direction Accuracy is 0%
- Market is at Resistance Extreme - Expect market consolidation Between \$1031.25 and \$1026

# Wheat - Analysis Chart



- Amplitude is 57° - Strong
- Direction Accuracy is 0%
- Market is at Resistance Extreme - Expect market consolidation Between \$563.5 and \$557.5