



QUANTCYCLES

COMMODITIES

OPPORTUNITIES & EXTREMES

About This Document

- This document contains two cyclical market patterns based on the QuantCycles Cycle Analysis Software
 - **Cycle Continuation Opportunity** – These are defined as a deviation of the forecast direction that extend to the upper or lower extremes. There is a high probability that the market will return to the forecast direction within a projected time frame. A Dual Opportunity has a higher probability of returning to the forecast direction than a Single Opportunity.
 - Always look for market commonality. For example, if you're looking at a DOW30 stock to buy, does the index look positive as well?
 - As the market approaches the cycle forecast turning point, the probability of the market following that direction decays. This is indicated by the "Cycle Percent Complete" note at the top of the chart, as well as predicted duration dates
 - At an Opportunity, a strong market may continue to go against the forecast trend, therefore, we recommend waiting for confirmation of the turning point before acting on it.
 - If the Market has not returned to the direction of the cycle by the minimum expected cycle duration date, consider the cycle incorrect.
 - **Cycle Extreme** – These are defined as a deviation of the forecast direction, but with a lessor probability of return to the forecast direction. A Dual Extreme is a stronger Support / Resistance than a Single Extreme.
 - The Cycle Continuation Opportunity information above applies here as well, but can be utilized more to take profits than to consider for entry
 - Indicates that a market is at or near a Cycle Support or Resistance.
 - There is a high probability of a market stall.

Analysis Overview

- 1 Dual Extremes
- 4 Single Extremes
- 18 Analysis

Cycle Extremes

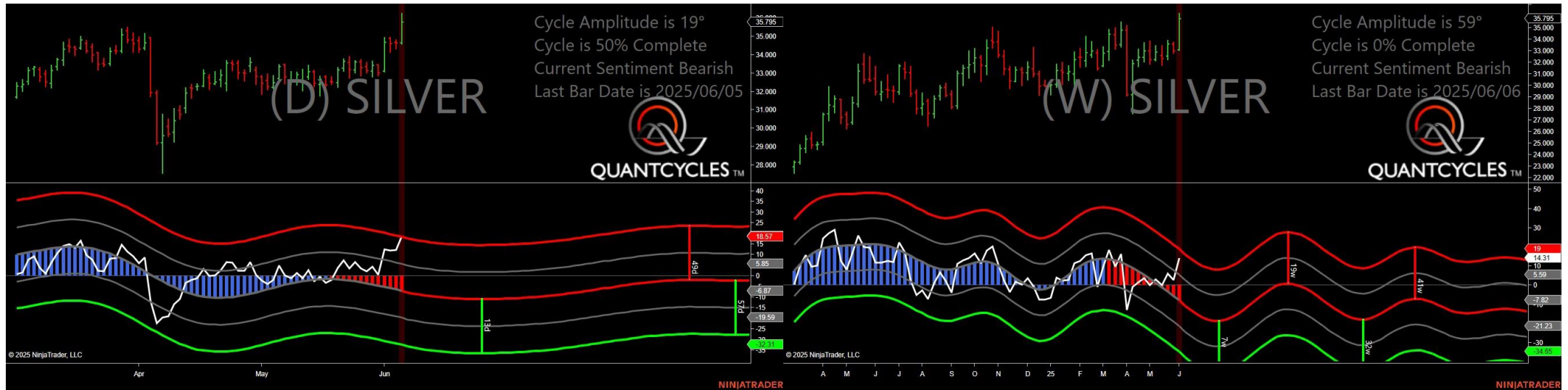
1 Dual Extremes

- SI - Silver

4 Single Extremes

- PA - Palladium
- PL - Platinum
- ZC - Corn
- ZO - Oats

Silver - Dual Extreme



- Amplitude is 19° - Weak
- Direction Accuracy is 0%
- Market is at Resistance Extreme - Expect market consolidation Between \$36.27 and \$35.795

Palladium - Single Daily Extreme



- Amplitude is 45° - Strong
- Direction Accuracy is 0%
- Market is at Resistance Extreme - Expect market consolidation Between \$1035.5 and \$1013

Platinum - Single Daily Extreme



- Amplitude is 35° - Good
- Direction Accuracy is 0%
- Market is at Resistance Extreme - Expect market consolidation Between \$1152.5 and \$1142.6

Corn - Single Daily Extreme



- Amplitude is 39° - Good
- Direction Accuracy is 50%
- Market is at Support Extreme - Expect market consolidation Between \$438.5 and \$433.25

Oats - Single Daily Extreme



- Amplitude is 16° - Weak
- Direction Accuracy is 0%
- Market is at Resistance Extreme - Expect market consolidation Between \$387 and \$386.75

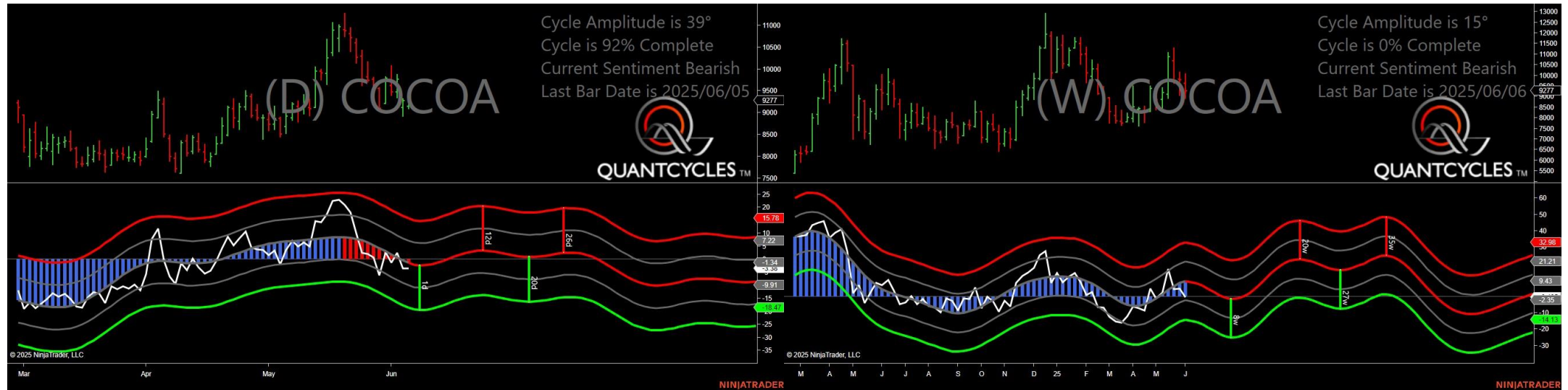
Analysis Charts

18 Charts

- CC - Cocoa
- CL - Crude Oil
- CT - Cotton
- GC - Gold
- GF - Feeder Cattle
- HE - Live Hogs
- HG - Copper
- HO - Heating Oil
- KC - Coffee
- LE - Live Cattle
- NG - Natural Gas
- OJ - Oranje Juice
- RB - Unleaded Gas
- SB - Sugar
- ZL - Soybean Oil
- ZM - Soybean Meal
- ZS - Soybeans

- ZW - Wheat

Cocoa - Analysis Chart



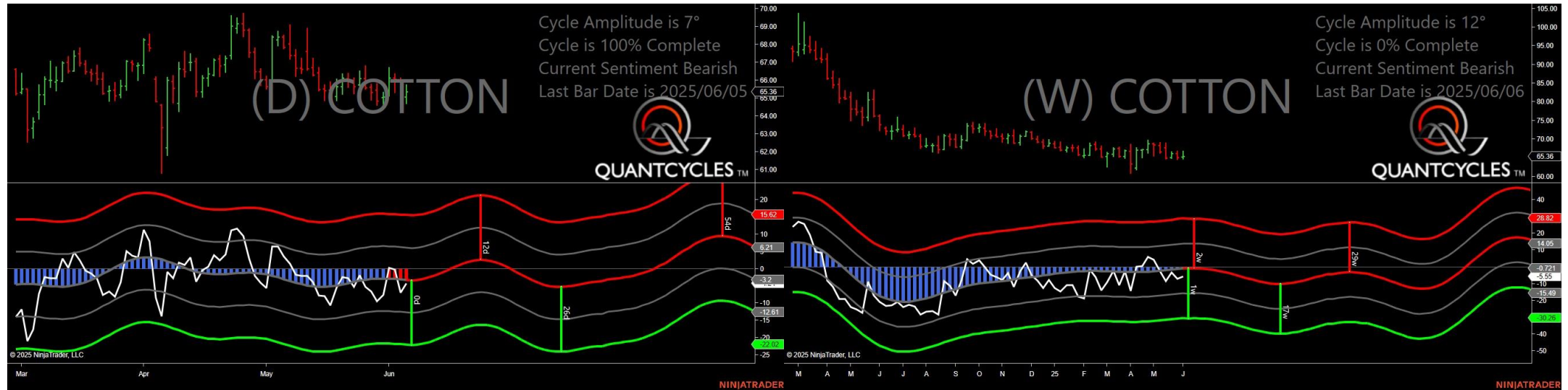
- Amplitude is 39° - Good
- Direction Accuracy is 0%
- **Market is at Resistance Extreme - Expect market consolidation Between \$9350 and \$9277**

Crude Oil - Analysis Chart



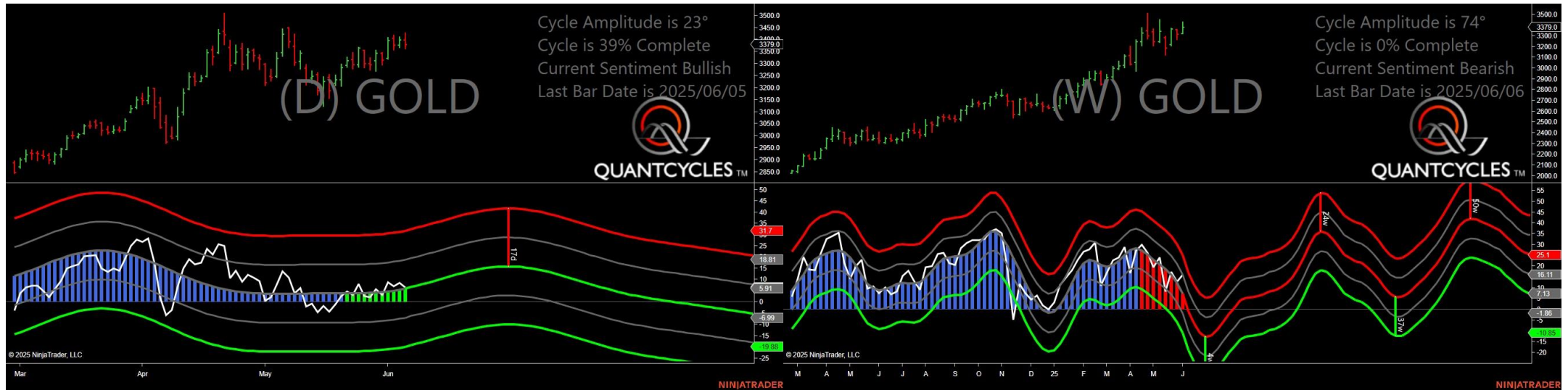
- Amplitude is 33° - Good
- Direction Accuracy is 50%
- Market is at Support Extreme - Expect market consolidation Between \$62.76 and \$62.5

Cotton - Analysis Chart



- Amplitude is 7° - Weak
- Direction Accuracy is 0%
- Market is at Resistance Extreme - Expect market consolidation Between \$65.74 and \$65.36

Gold - Analysis Chart



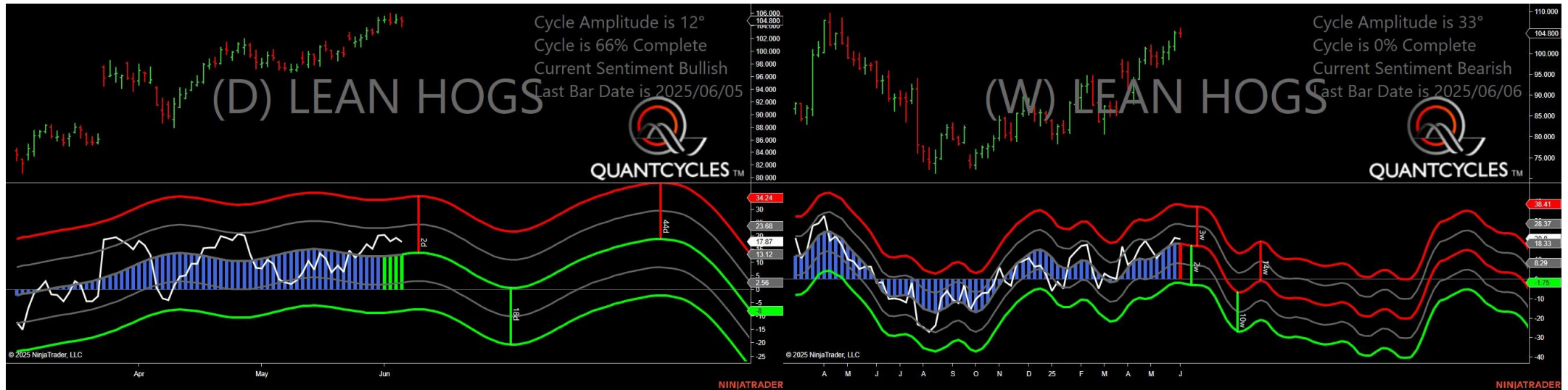
- Amplitude is 23° - Good
- Direction Accuracy is 50%
- Market is at Support Extreme - Expect market consolidation Between \$3379 and \$3362.3

Feeder Cattle - Analysis Chart



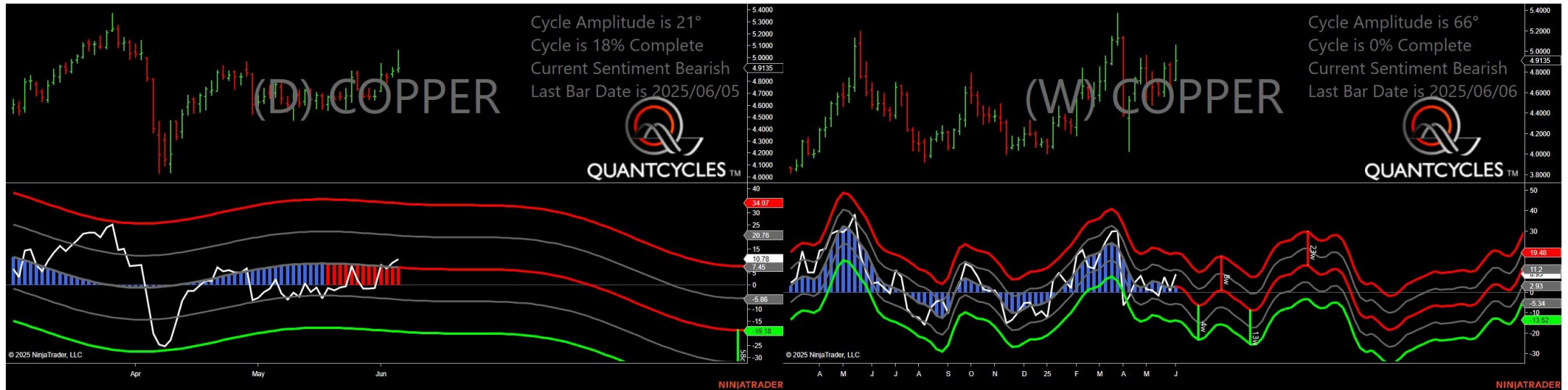
- Amplitude is 15° - Weak
- Direction Accuracy is 50%
- Market is at Support Extreme - Expect market consolidation Between \$305 and \$305

Live Hogs - Analysis Chart



- Amplitude is 12° - Weak
- Direction Accuracy is 50%
- Market is at Support Extreme - Expect market consolidation Between \$104.8 and \$103.925

Copper - Analysis Chart



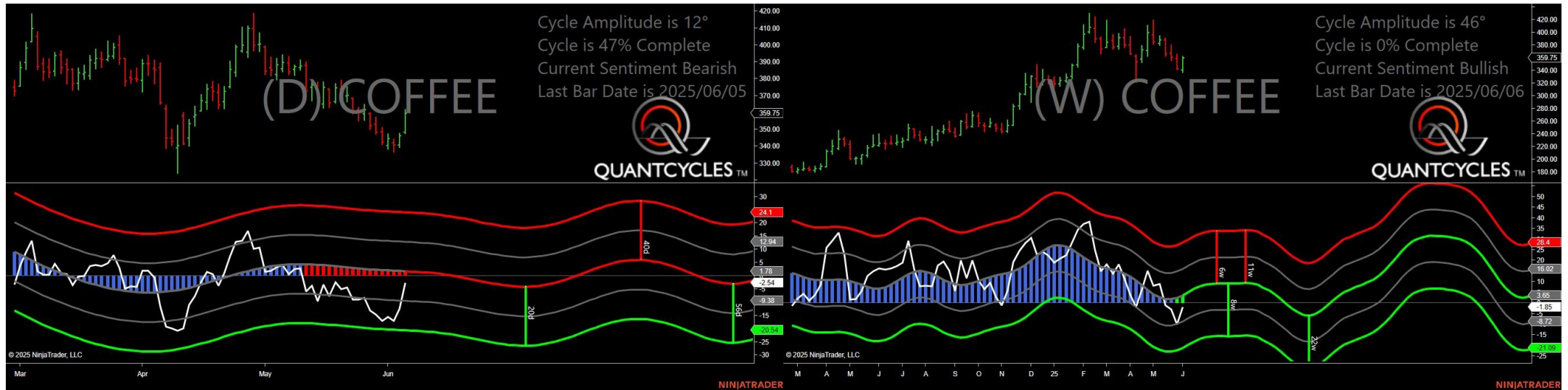
- Amplitude is 21° - Good
- Direction Accuracy is 0%
- Market is at Resistance Extreme - Expect market consolidation Between \$5.0615 and \$4.9135

Heating Oil - Analysis Chart



- Amplitude is 18° - Weak
- Direction Accuracy is 50%
- Market is at Support Extreme - Expect market consolidation Between \$2.0701 and \$2.0606

Coffee - Analysis Chart



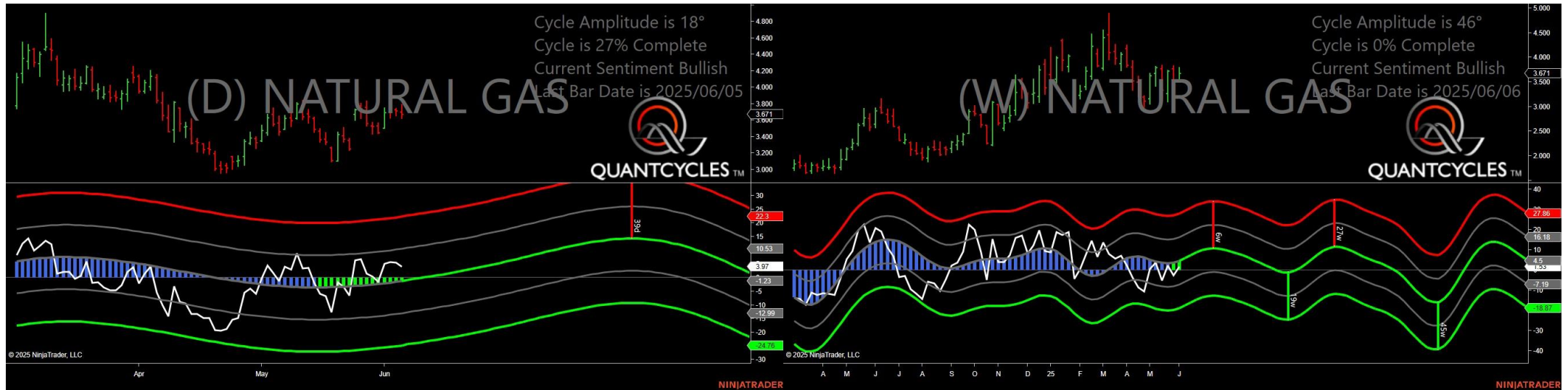
- Amplitude is 12° - Weak
- Direction Accuracy is 0%
- Market is at Resistance Extreme - Expect market consolidation Between \$361.65 and \$359.75

Live Cattle - Analysis Chart



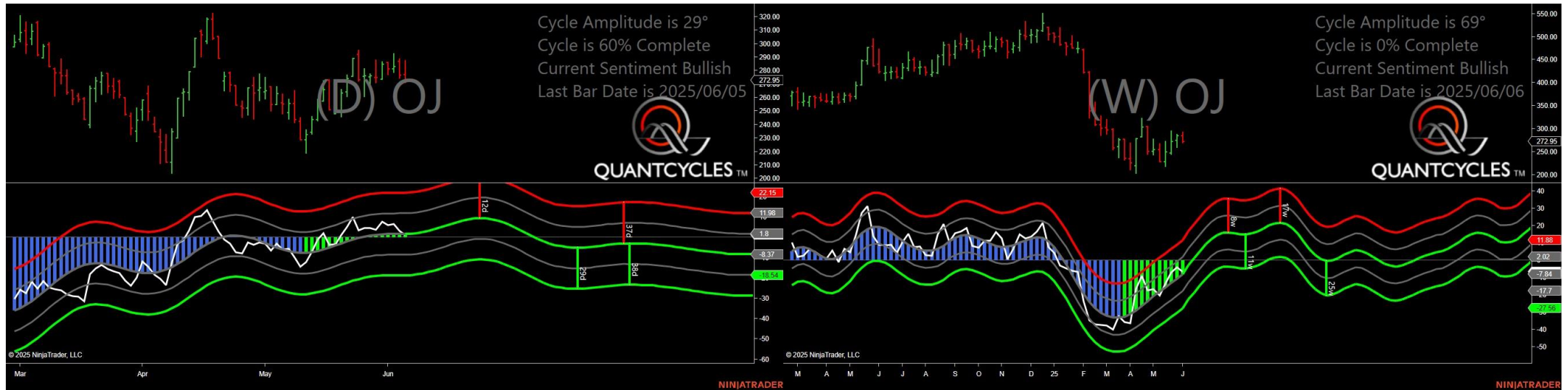
- Amplitude is 34° - Good
- Direction Accuracy is 50%
- Market is at Support Extreme - Expect market consolidation Between \$213.075 and \$213.05

Natural Gas - Analysis Chart



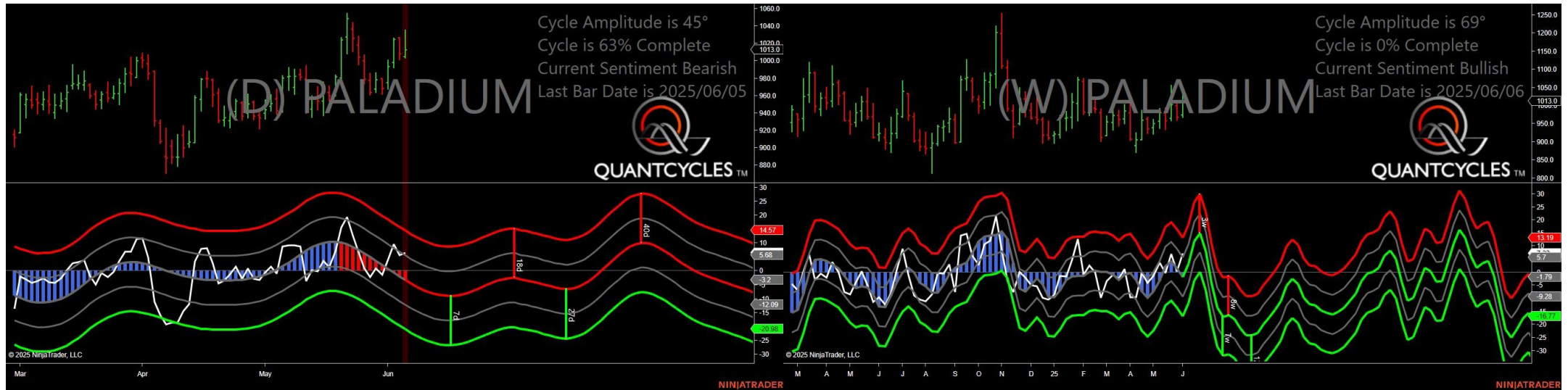
- Amplitude is 18° - Weak
- Direction Accuracy is 50%
- Market is at Support Extreme - Expect market consolidation Between \$3.671 and \$3.62

Oranje Juice - Analysis Chart



- Amplitude is 29° - Good
- Direction Accuracy is 50%
- Market is at Support Extreme - Expect market consolidation Between \$272.95 and \$271.05

Palladium - Analysis Chart



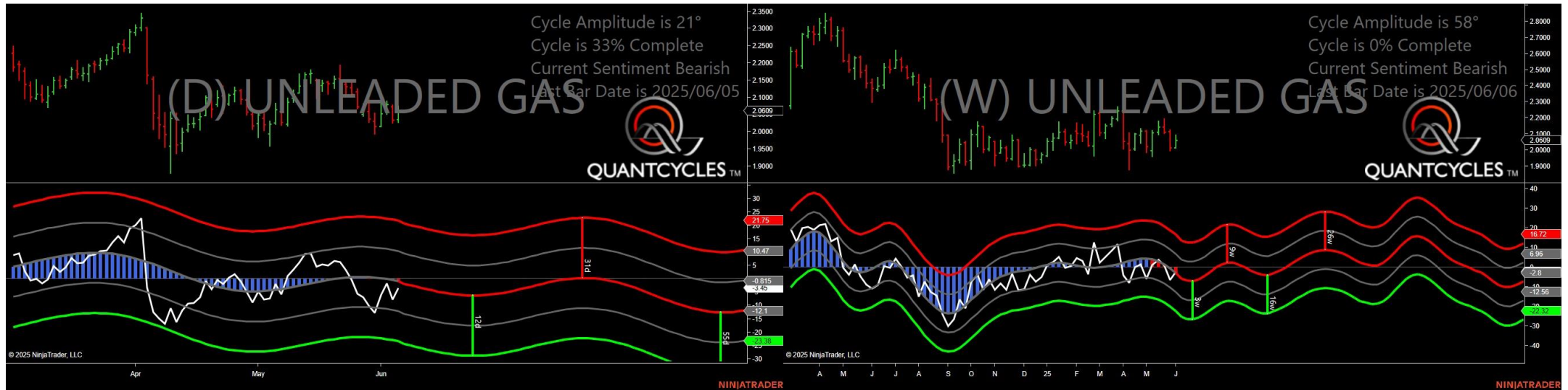
- Amplitude is 45° - Strong
- Direction Accuracy is 0%
- Market is at Resistance Extreme - Expect market consolidation Between \$1035.5 and \$1013

Platinum - Analysis Chart



- Amplitude is 35° - Good
- Direction Accuracy is 0%
- Market is at Resistance Extreme - Expect market consolidation Between \$1152.5 and \$1142.6

Unleaded Gas - Analysis Chart



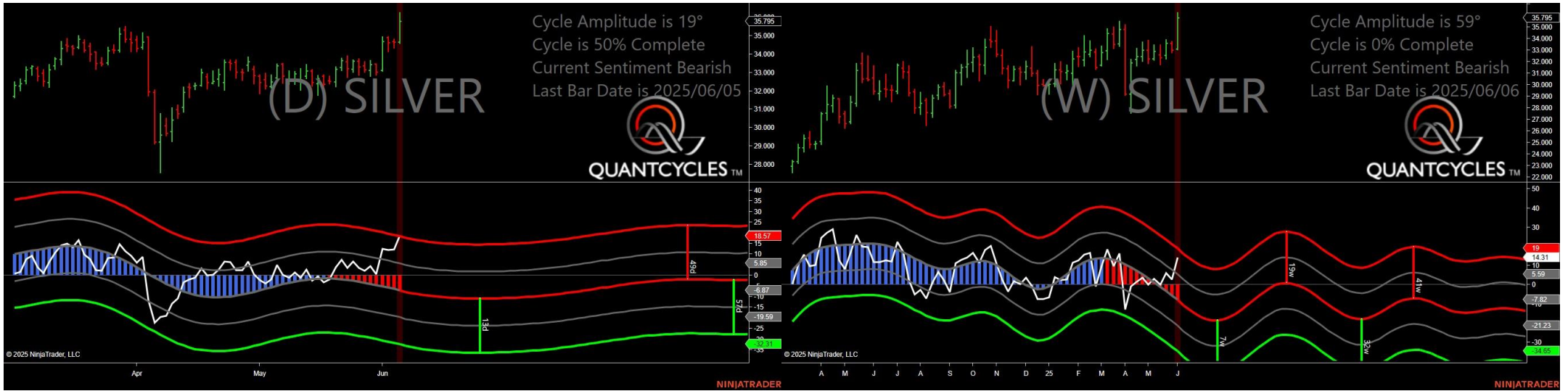
- Amplitude is 21° - Good
- Direction Accuracy is 0%
- Market is at Resistance Extreme - Expect market consolidation Between \$2.0733 and \$2.0609

Sugar - Analysis Chart



- Amplitude is 6° - Weak
- Direction Accuracy is 50%
- Market is at Support Extreme - Expect market consolidation Between \$16.57 and \$16.46

Silver - Analysis Chart



- Amplitude is 19° - Weak
- Direction Accuracy is 0%
- Market is at Resistance Extreme - Expect market consolidation Between \$36.27 and \$35.795

Corn - Analysis Chart



- Amplitude is 39° - Good
- Direction Accuracy is 50%
- Market is at Support Extreme - Expect market consolidation Between \$438.5 and \$433.25

Soybean Oil - Analysis Chart



- Amplitude is 17° - Weak
- Direction Accuracy is 50%
- Market is at Support Extreme - Expect market consolidation Between \$46.65 and \$46.33

Soybean Meal - Analysis Chart



- Amplitude is 26° - Good
- Direction Accuracy is 50%
- Market is at Support Extreme - Expect market consolidation Between \$297.1 and \$294.6

Oats - Analysis Chart



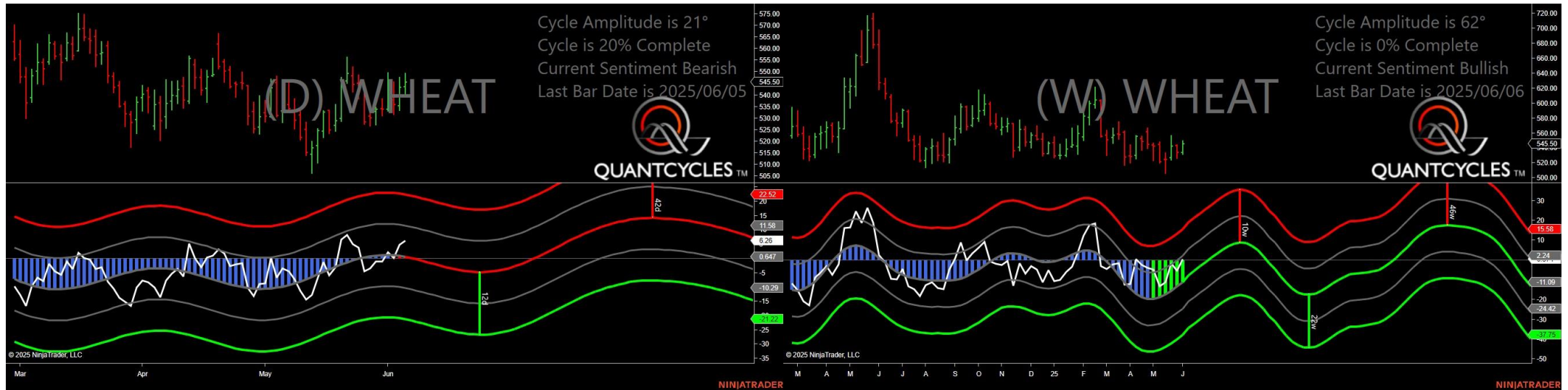
- Amplitude is 16° - Weak
- Direction Accuracy is 0%
- Market is at Resistance Extreme - Expect market consolidation Between \$387 and \$386.75

Soybeans - Analysis Chart



- Amplitude is 15° - Weak
- Direction Accuracy is 0%
- Market is at Resistance Extreme - Expect market consolidation Between \$1056.75 and \$1051.75

Wheat - Analysis Chart



- Amplitude is 21° - Good
- Direction Accuracy is 0%
- Market is at Resistance Extreme - Expect market consolidation Between \$549.25 and \$545.5