



QUANTCYCLES

COMMODITIES

OPPORTUNITIES & EXTREMES

About This Document

- This document contains two cyclical market patterns based on the QuantCycles Cycle Analysis Software
 - **Cycle Continuation Opportunity** – These are defined as a deviation of the forecast direction that extend to the upper or lower extremes. There is a high probability that the market will return to the forecast direction within a projected time frame. A Dual Opportunity has a higher probability of returning to the forecast direction than a Single Opportunity.
 - Always look for market commonality. For example, if you're looking at a DOW30 stock to buy, does the index look positive as well?
 - As the market approaches the cycle forecast turning point, the probability of the market following that direction decays. This is indicated by the "Cycle Percent Complete" note at the top of the chart, as well as predicted duration dates
 - At an Opportunity, a strong market may continue to go against the forecast trend, therefore, we recommend waiting for confirmation of the turning point before acting on it.
 - If the Market has not returned to the direction of the cycle by the minimum expected cycle duration date, consider the cycle incorrect.
 - **Cycle Extreme** – These are defined as a deviation of the forecast direction, but with a lessor probability of return to the forecast direction. A Dual Extreme is a stronger Support / Resistance than a Single Extreme.
 - The Cycle Continuation Opportunity information above applies here as well, but can be utilized more to take profits than to consider for entry
 - Indicates that a market is at or near a Cycle Support or Resistance.
 - There is a high probability of a market stall.

Analysis Overview

- 4 Single Extremes
- 19 Analysis

Cycle Extremes

4 Single Extremes

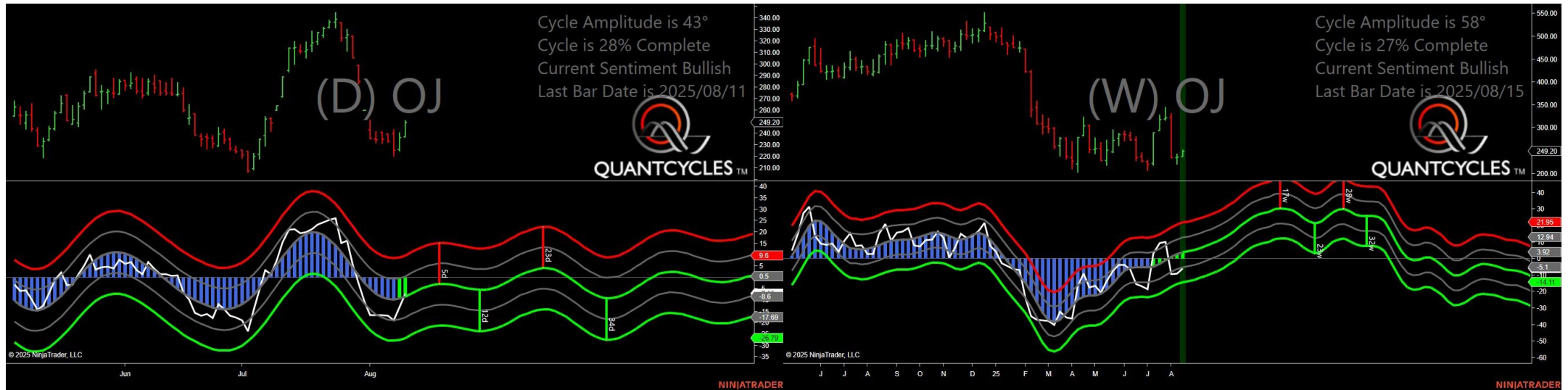
- CC - Cocoa
- OJ - Oranje Juice
- PA - Palladium
- ZL - Soybean Oil

Cocoa - Single Daily Extreme



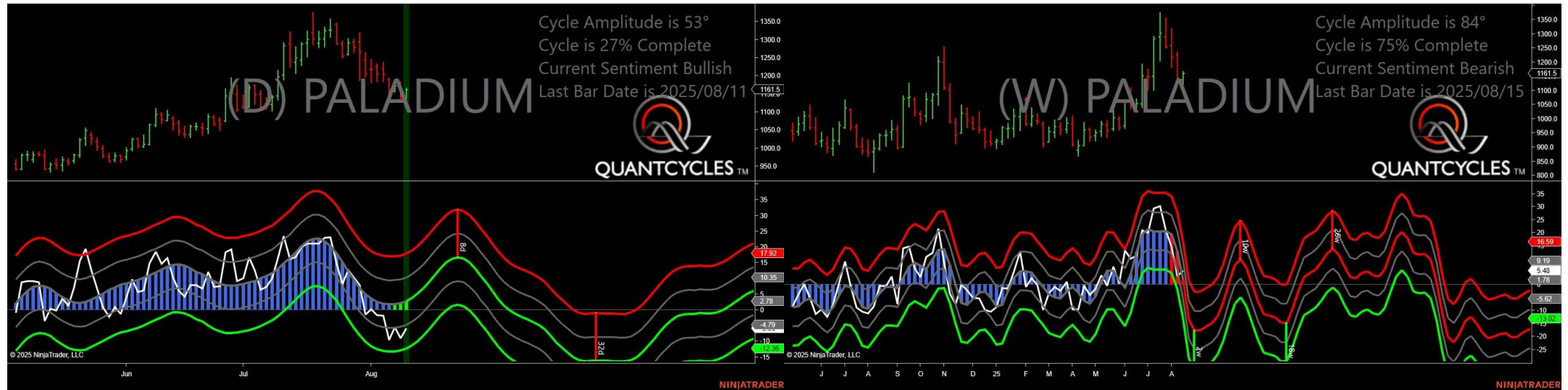
- Amplitude is 15° - Weak
- Direction Accuracy is 0%
- Market is at Resistance Extreme - Expect market consolidation Between \$8823 and \$8444

Oranje Juice - Single Weekly Extreme



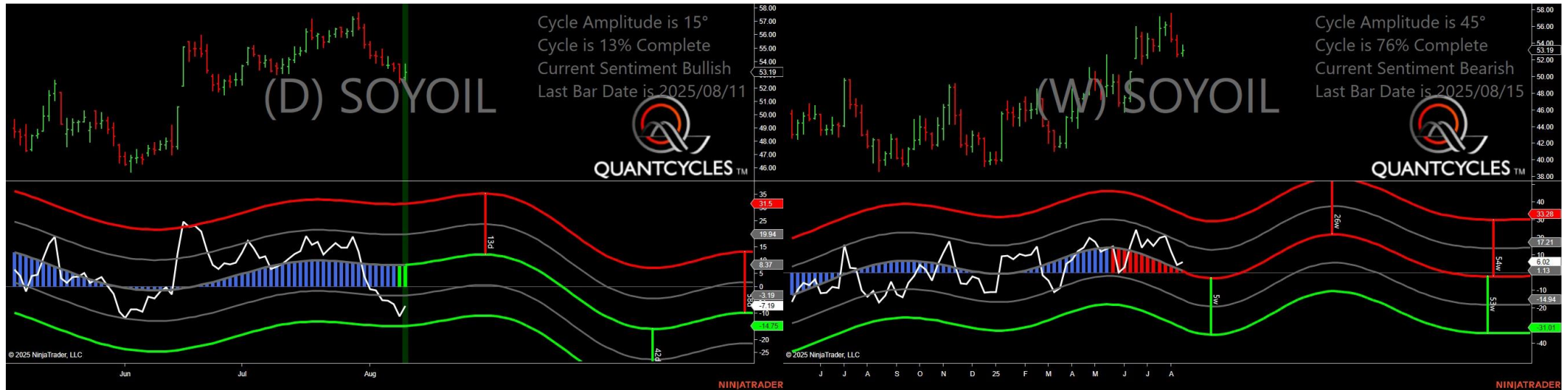
- Amplitude is 43° - Strong
- Direction Accuracy is 50%
- Market is at Support Extreme - Expect market consolidation Between \$236.65 and \$236.65

Palladium - Single Daily Extreme



- Amplitude is 53° - Strong
- Direction Accuracy is 50%
- Market is at Support Extreme - Expect market consolidation Between \$1138 and \$1122.5

Soybean Oil - Single Daily Extreme



- Amplitude is 15° - Weak
- Direction Accuracy is 50%
- Market is at Support Extreme - Expect market consolidation Between \$52.8 and \$52.5

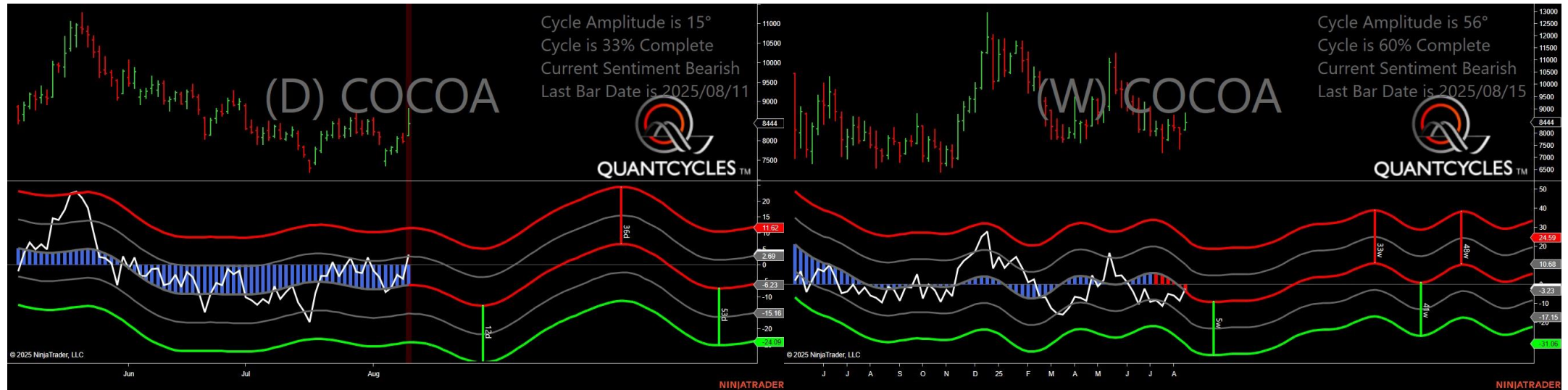
Analysis Charts

19 Charts

- CL - Crude Oil
- CT - Cotton
- GC - Gold
- GF - Feeder Cattle
- HE - Live Hogs
- HG - Copper
- HO - Heating Oil
- KC - Coffee
- LE - Live Cattle
- NG - Natural Gas
- PL - Platinum
- RB - Unleaded Gas
- SB - Sugar
- SI - Silver
- ZC - Corn
- ZM - Soybean Meal
- ZO - Oats

- **ZS - Soybeans**
- **ZW - Wheat**

Cocoa - Analysis Chart



- Amplitude is 15° - Weak
- Direction Accuracy is 0%
- Market is at Resistance Extreme - Expect market consolidation Between \$8823 and \$8444

Crude Oil - Analysis Chart



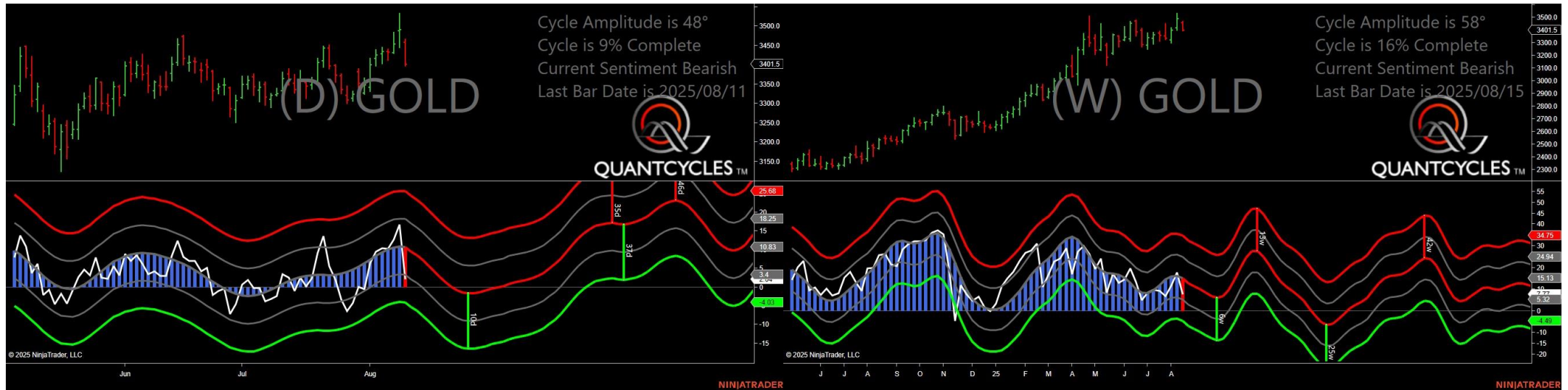
- Amplitude is 5° - Weak
- Direction Accuracy is 0%
- Market is at Resistance Extreme - Expect market consolidation Between \$64.44 and \$64.06

Cotton - Analysis Chart



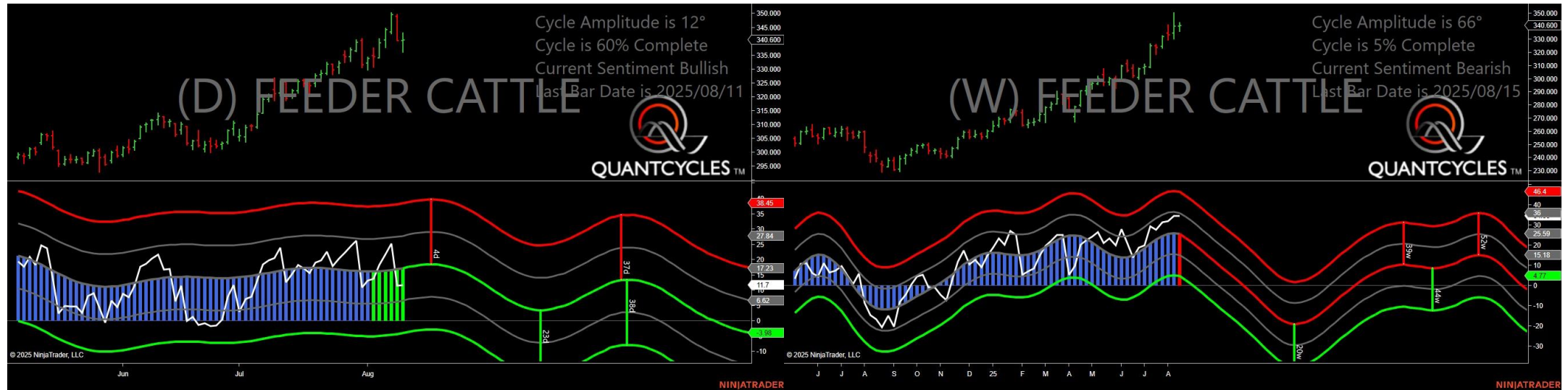
- Amplitude is 22° - Good
- Direction Accuracy is 0%
- Market is at Resistance Extreme - Expect market consolidation Between \$67.19 and \$66.76

Gold - Analysis Chart



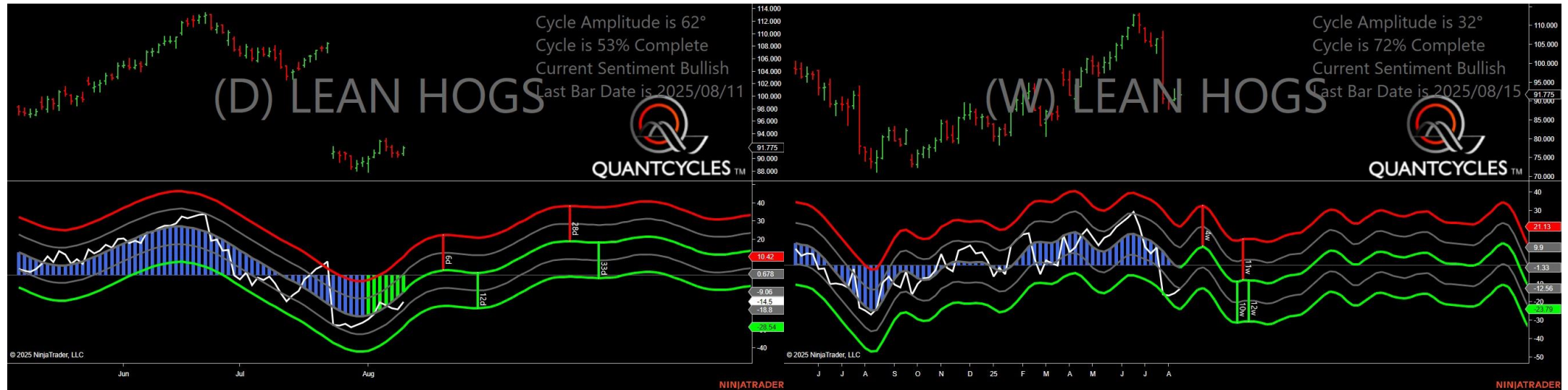
- Amplitude is 48° - Strong
- Direction Accuracy is 0%
- Market is at Resistance Extreme - Expect market consolidation Between \$3466.3 and \$3458.1

Feeder Cattle - Analysis Chart



- Amplitude is 12° - Weak
- Direction Accuracy is 50%
- Market is at Support Extreme - Expect market consolidation Between \$340.375 and \$336.175

Live Hogs - Analysis Chart



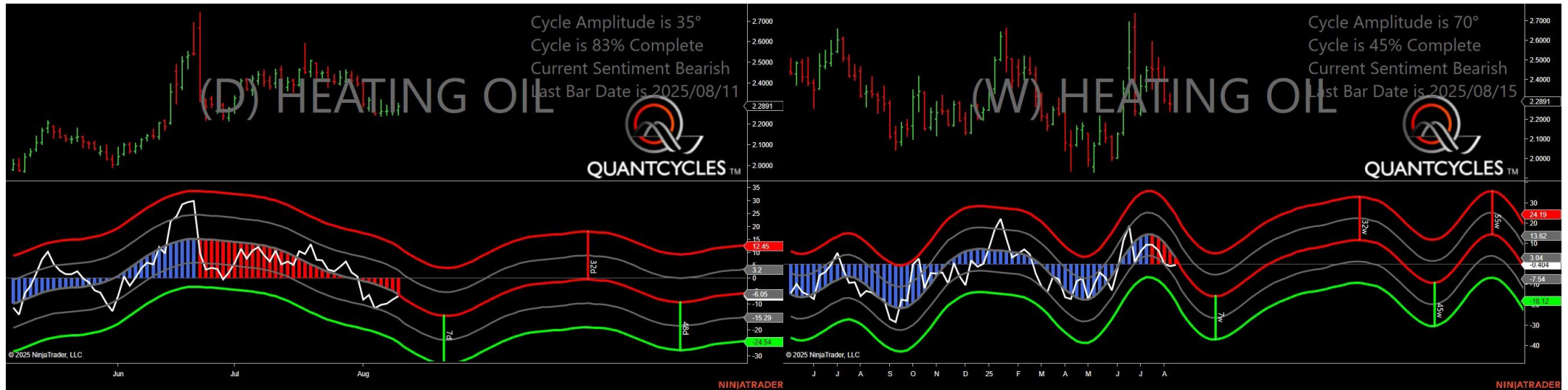
- Amplitude is 62° - Strong
- Direction Accuracy is 50%
- Market is at Support Extreme - Expect market consolidation Between \$90.8 and \$90.6

Copper - Analysis Chart



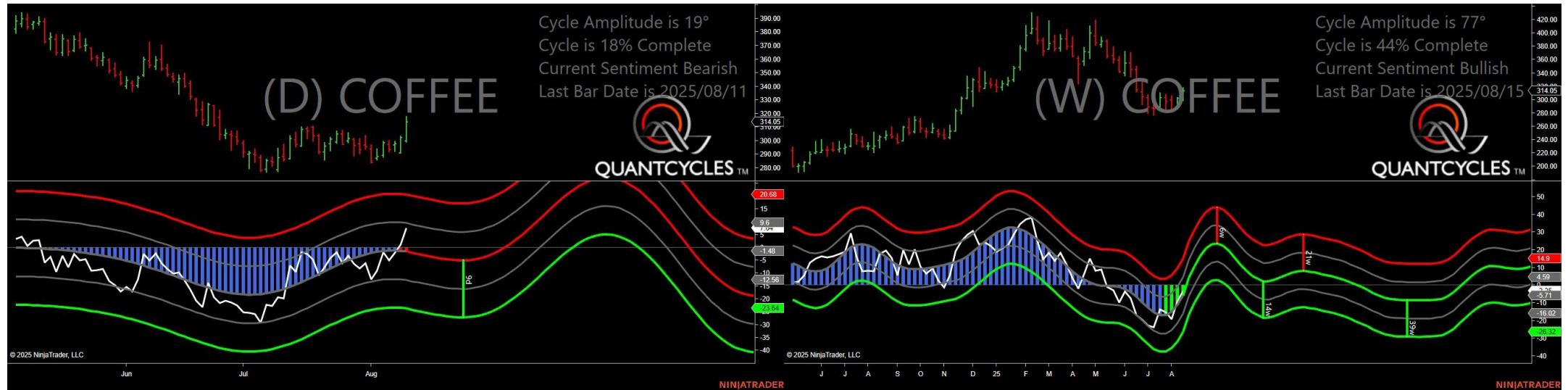
- Amplitude is 23° - Good
- Direction Accuracy is 0%
- Market is at Resistance Extreme - Expect market consolidation Between \$4.485 and \$4.4835

Heating Oil - Analysis Chart



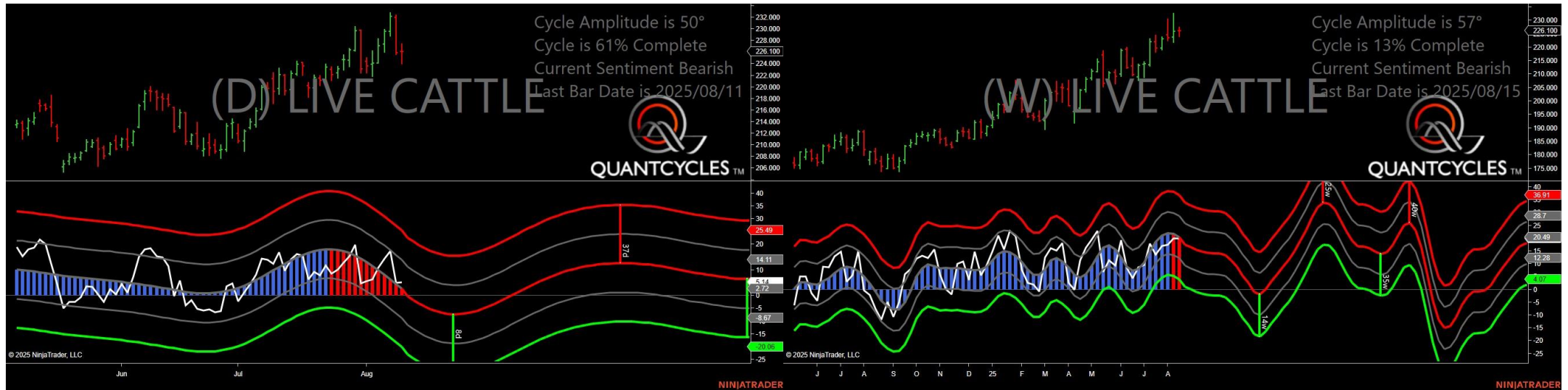
- Amplitude is 35° - Good
- Direction Accuracy is 0%
- Market is at Resistance Extreme - Expect market consolidation Between \$2.3008 and \$2.2891

Coffee - Analysis Chart



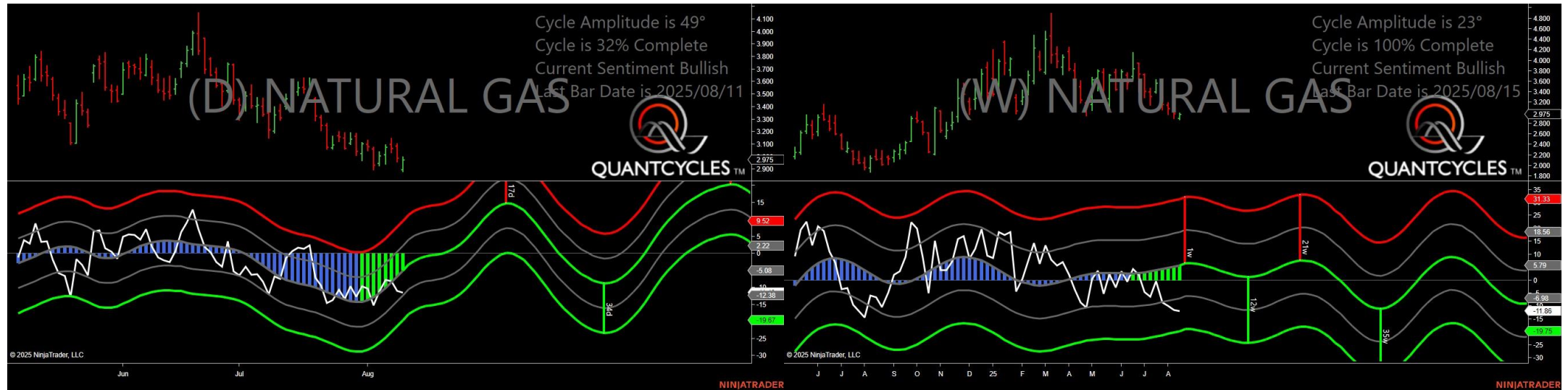
- Amplitude is 19° - Weak
- Direction Accuracy is 0%
- Market is at Resistance Extreme - Expect market consolidation Between \$317.6 and \$314.05

Live Cattle - Analysis Chart



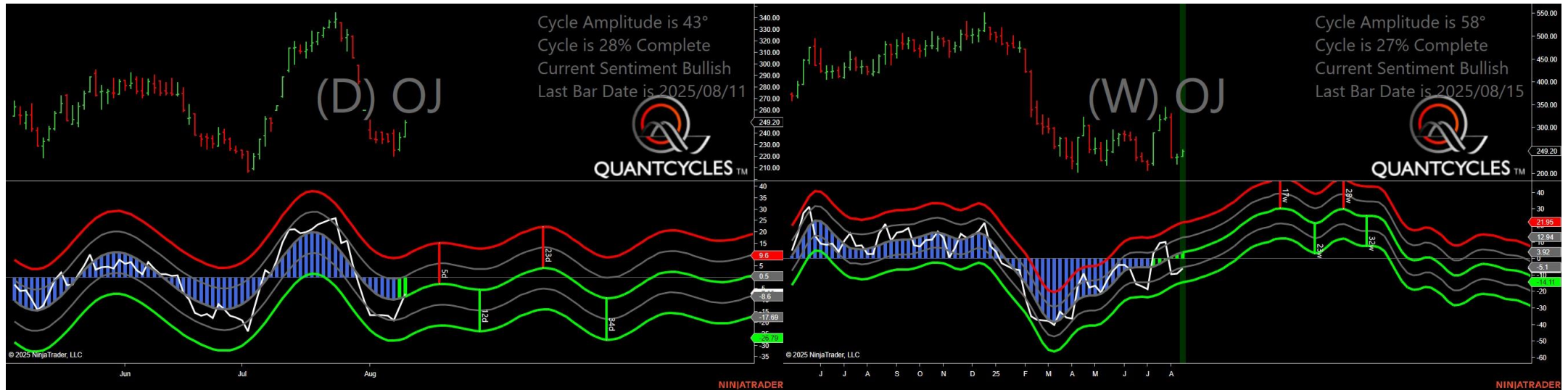
- Amplitude is 50° - Strong
- Direction Accuracy is 0%
- Market is at Resistance Extreme - Expect market consolidation Between \$227.4 and \$226.125

Natural Gas - Analysis Chart



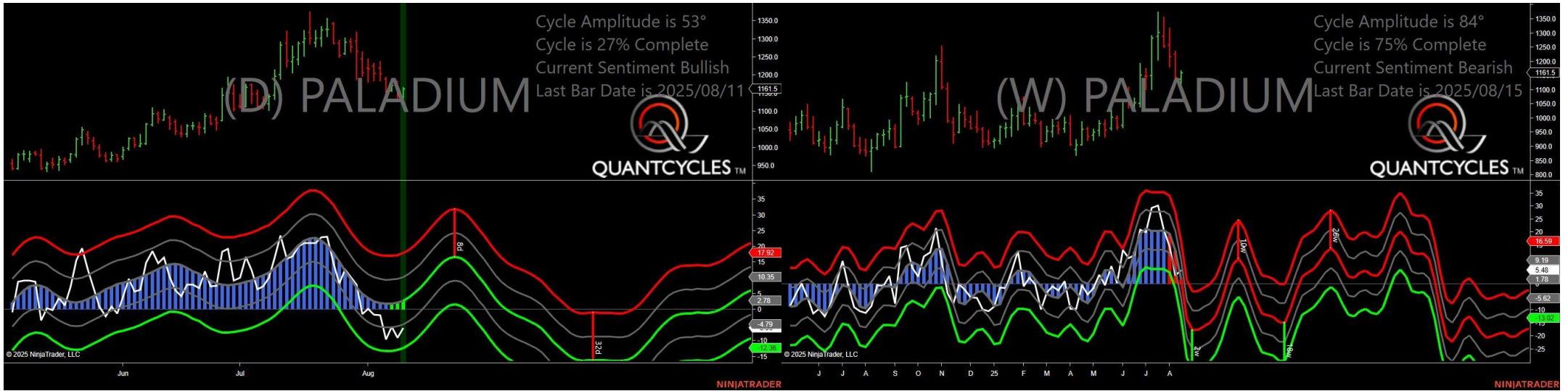
- Amplitude is 49° - Strong
- Direction Accuracy is 50%
- Market is at Support Extreme - Expect market consolidation Between \$2.895 and \$2.881

Oranje Juice - Analysis Chart



- Amplitude is 43° - Strong
- Direction Accuracy is 50%
- Market is at Support Extreme - Expect market consolidation Between \$236.65 and \$236.65

Palladium - Analysis Chart



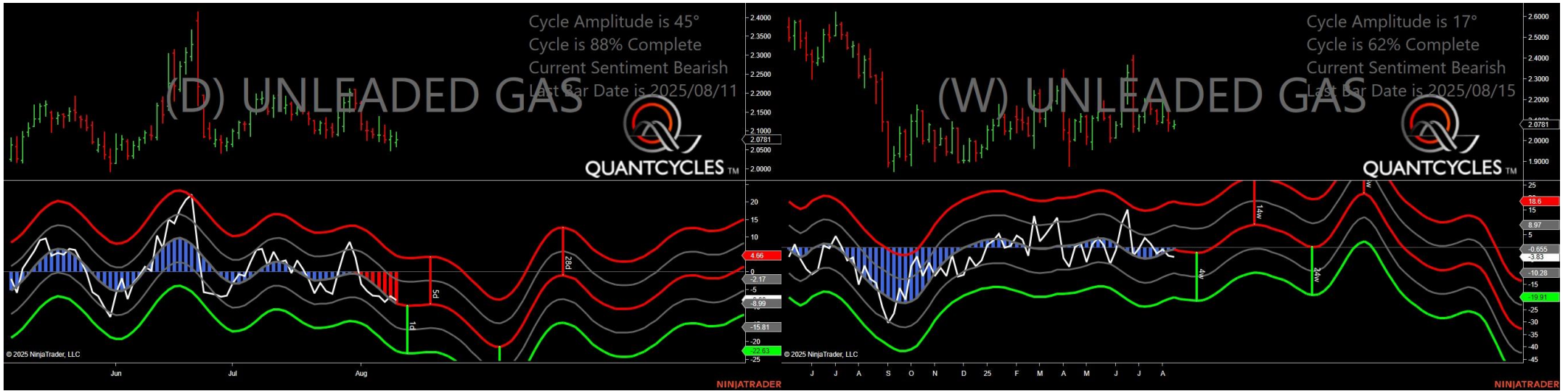
- Amplitude is 53° - Strong
- Direction Accuracy is 50%
- Market is at Support Extreme - Expect market consolidation Between \$1138 and \$1122.5

Platinum - Analysis Chart



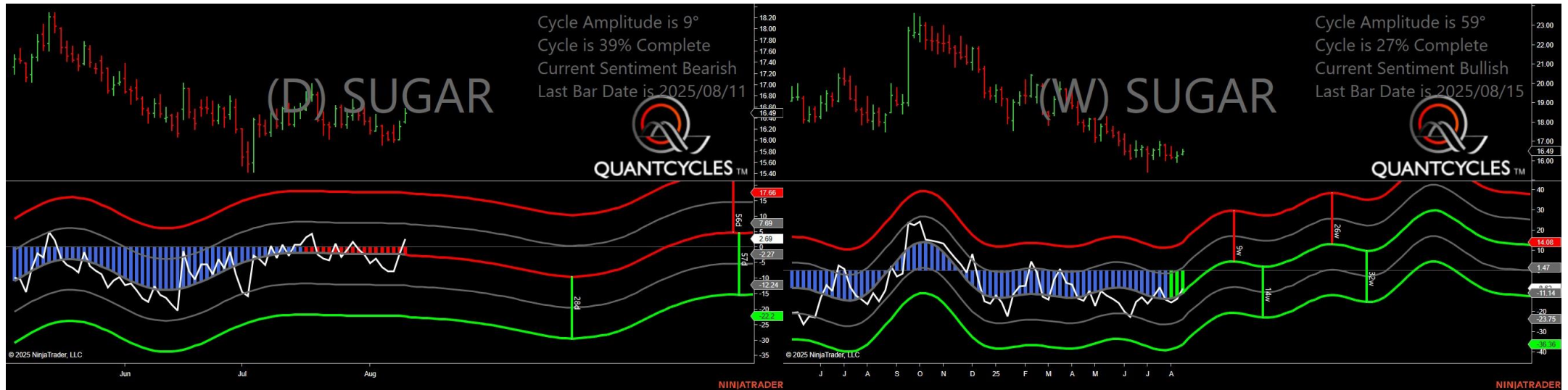
- Amplitude is 27° - Good
- Direction Accuracy is 50%
- Market is at Support Extreme - Expect market consolidation Between \$1339.6 and \$1308.8

Unleaded Gas - Analysis Chart



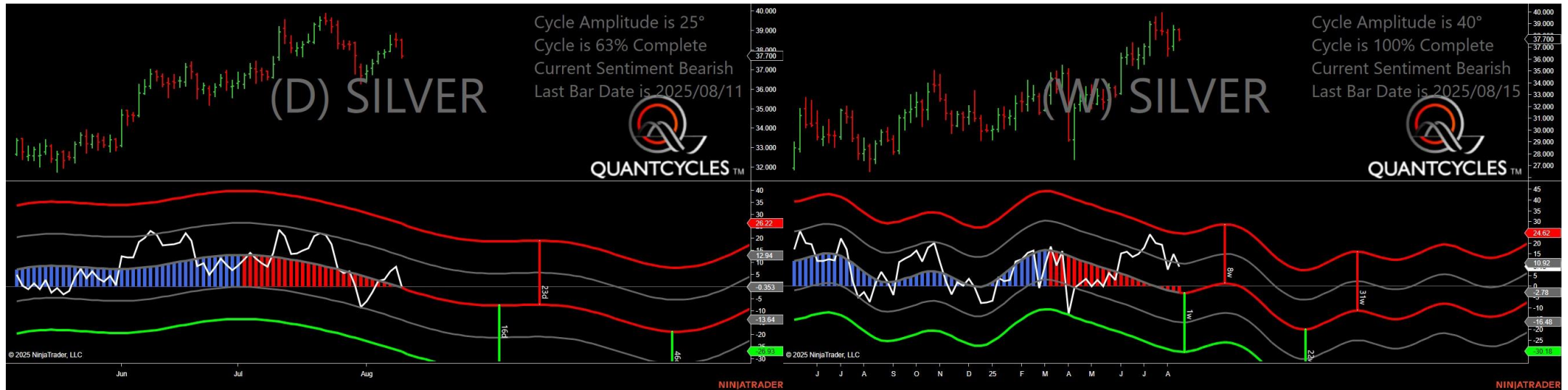
- Amplitude is 45° - Strong
- Direction Accuracy is 0%
- Market is at Resistance Extreme - Expect market consolidation Between \$2.0979 and \$2.0781

Sugar - Analysis Chart



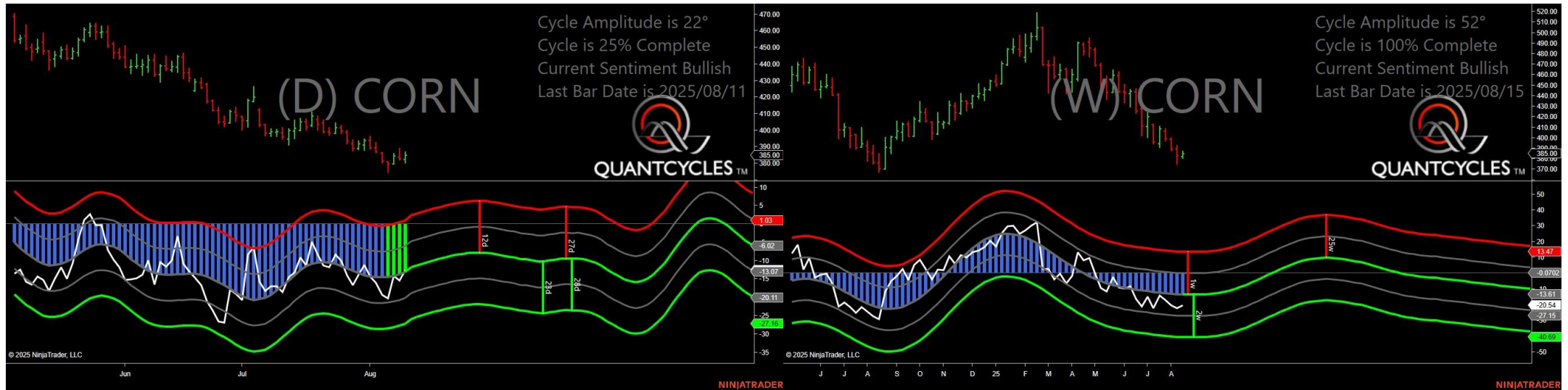
- Amplitude is 9° - Weak
- Direction Accuracy is 0%
- Market is at Resistance Extreme - Expect market consolidation Between \$16.58 and \$16.49

Silver - Analysis Chart



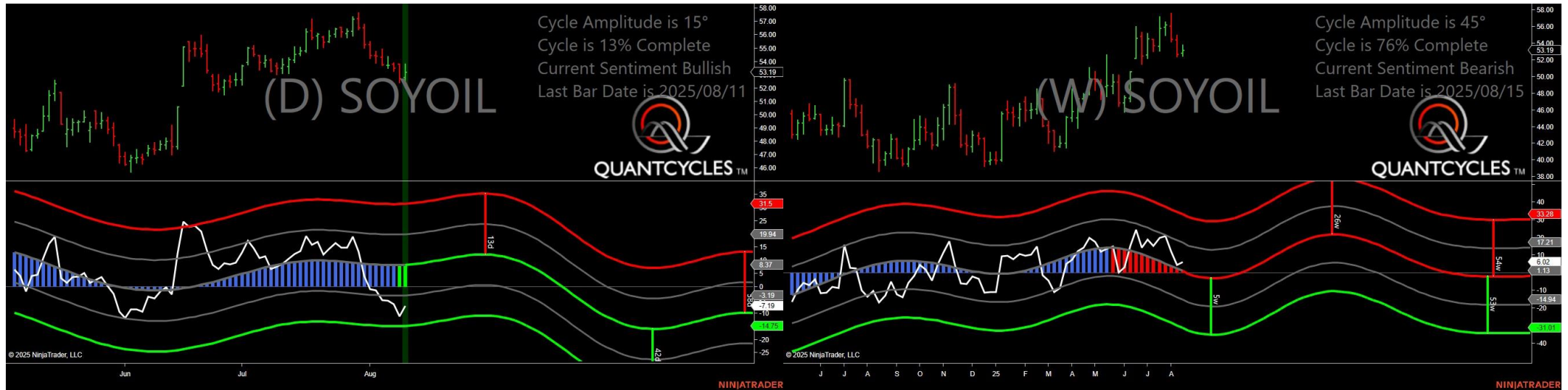
- Amplitude is 25° - Good
- Direction Accuracy is 0%
- Market is at Resistance Extreme - Expect market consolidation Between \$38.56 and \$38.54

Corn - Analysis Chart



- Amplitude is 22° - Good
- Direction Accuracy is 50%
- Market is at Support Extreme - Expect market consolidation Between \$382.5 and \$380.5

Soybean Oil - Analysis Chart



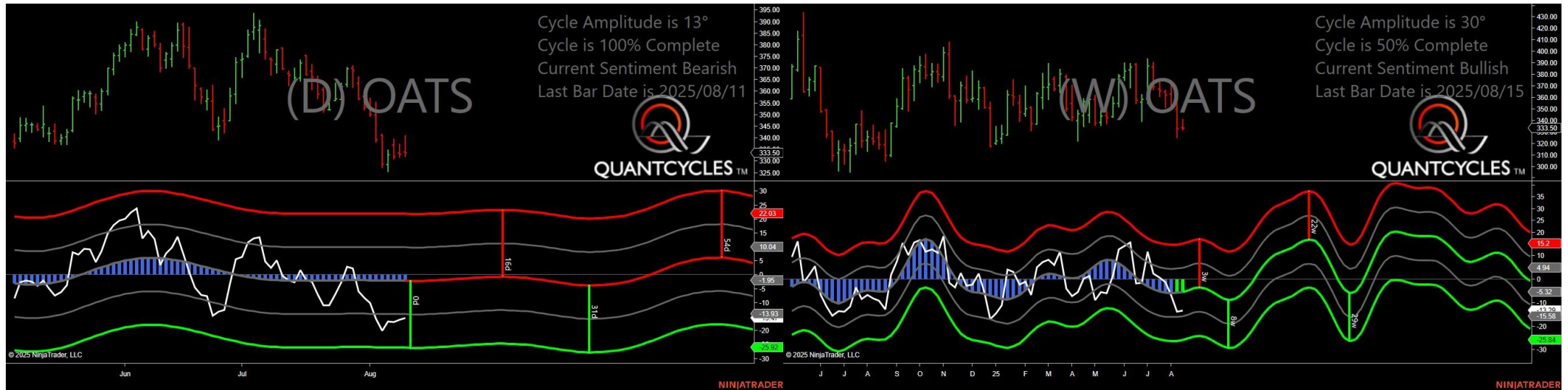
- Amplitude is 15° - Weak
- Direction Accuracy is 50%
- Market is at Support Extreme - Expect market consolidation Between \$52.8 and \$52.5

Soybean Meal - Analysis Chart



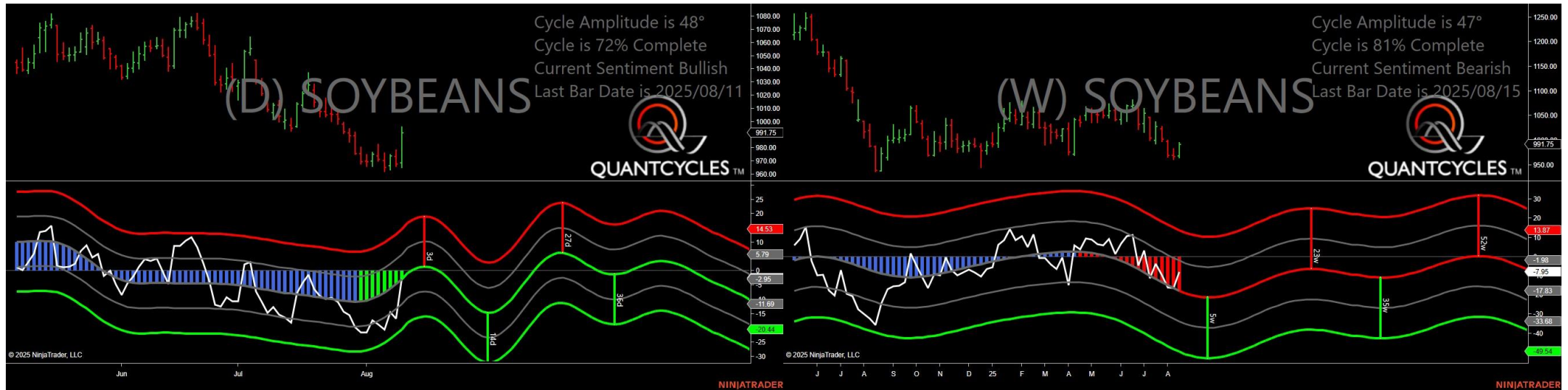
- Amplitude is 33° - Good
- Direction Accuracy is 50%
- Market is at Support Extreme - Expect market consolidation Between \$277.2 and \$275.6

Oats - Analysis Chart



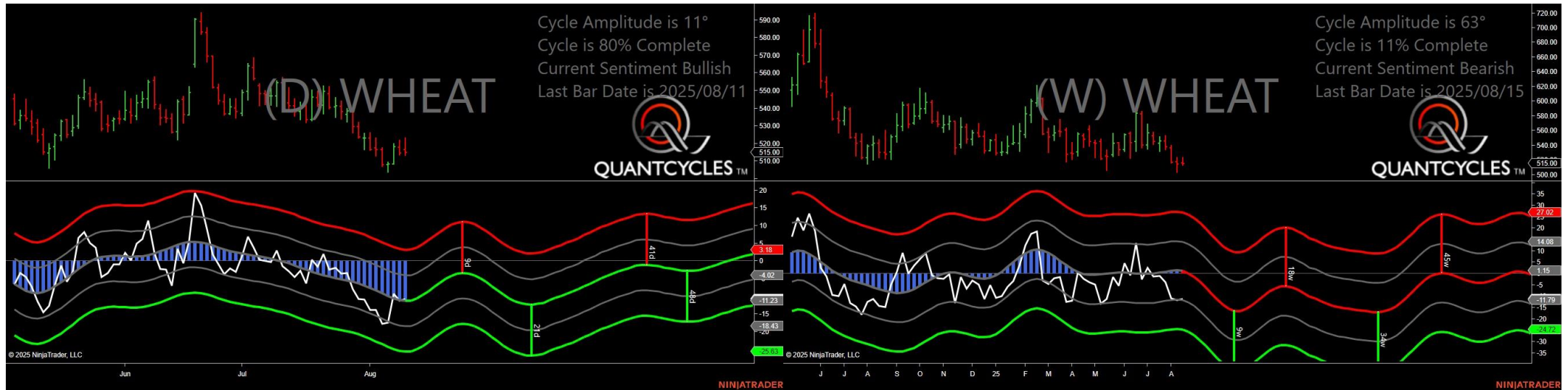
- Amplitude is 13° - Weak
- Direction Accuracy is 0%
- Market is at Resistance Extreme - Expect market consolidation Between \$341 and \$334

Soybeans - Analysis Chart



- Amplitude is 48° - Strong
- Direction Accuracy is 50%
- Market is at Support Extreme - Expect market consolidation Between \$968.75 and \$965.25

Wheat - Analysis Chart



- Amplitude is 11° - Weak
- Direction Accuracy is 50%
- Market is at Support Extreme - Expect market consolidation Between \$515 and \$513.25