



QUANTCYCLES

COMMODITIES

OPPORTUNITIES & EXTREMES

About This Document

- This document contains two cyclical market patterns based on the QuantCycles Cycle Analysis Software
 - **Cycle Continuation Opportunity** – These are defined as a deviation of the forecast direction that extend to the upper or lower extremes. There is a high probability that the market will return to the forecast direction within a projected time frame. A Dual Opportunity has a higher probability of returning to the forecast direction than a Single Opportunity.
 - Always look for market commonality. For example, if you're looking at a DOW30 stock to buy, does the index look positive as well?
 - As the market approaches the cycle forecast turning point, the probability of the market following that direction decays. This is indicated by the "Cycle Percent Complete" note at the top of the chart, as well as predicted duration dates
 - At an Opportunity, a strong market may continue to go against the forecast trend, therefore, we recommend waiting for confirmation of the turning point before acting on it.
 - If the Market has not returned to the direction of the cycle by the minimum expected cycle duration date, consider the cycle incorrect.
 - **Cycle Extreme** – These are defined as a deviation of the forecast direction, but with a lessor probability of return to the forecast direction. A Dual Extreme is a stronger Support / Resistance than a Single Extreme.
 - The Cycle Continuation Opportunity information above applies here as well, but can be utilized more to take profits than to consider for entry
 - Indicates that a market is at or near a Cycle Support or Resistance.
 - There is a high probability of a market stall.

Analysis Overview

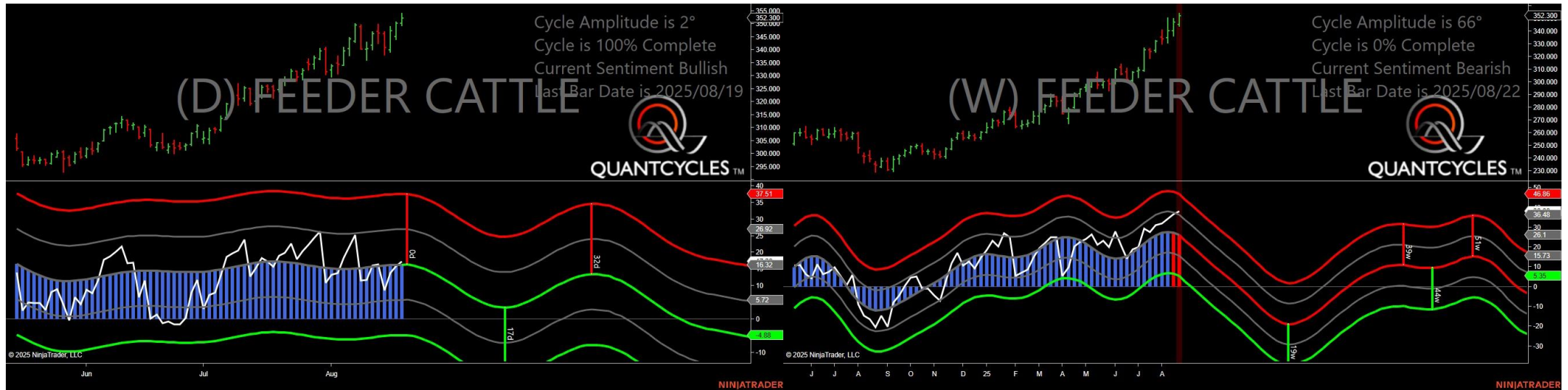
- 8 Single Extremes
- 15 Analysis

Cycle Extremes

8 Single Extremes

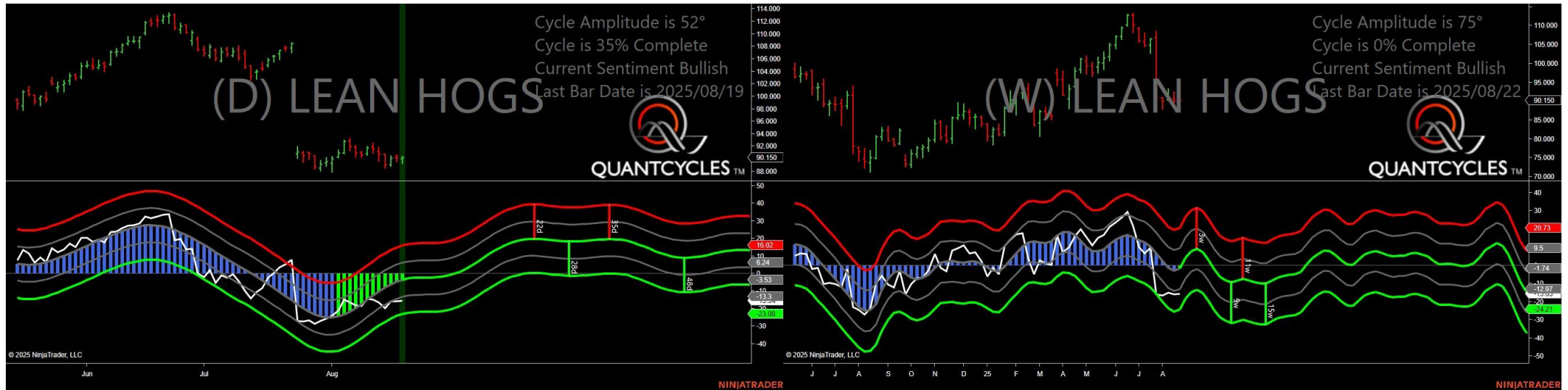
- GF - Feeder Cattle
- HE - Live Hogs
- KC - Coffee
- LE - Live Cattle
- NG - Natural Gas
- PA - Palladium
- ZL - Soybean Oil
- ZW - Wheat

Feeder Cattle - Single Weekly Extreme



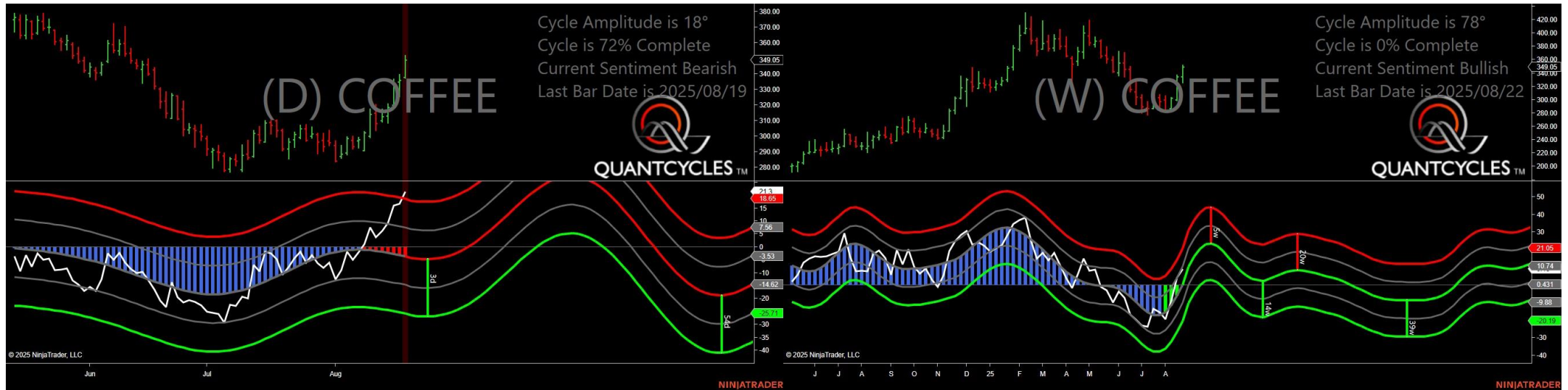
- Amplitude is 2° - Weak
- Direction Accuracy is 50%
- Market is at Support Extreme - Expect market consolidation Between \$350.325 and \$349.45

Live Hogs - Single Daily Extreme



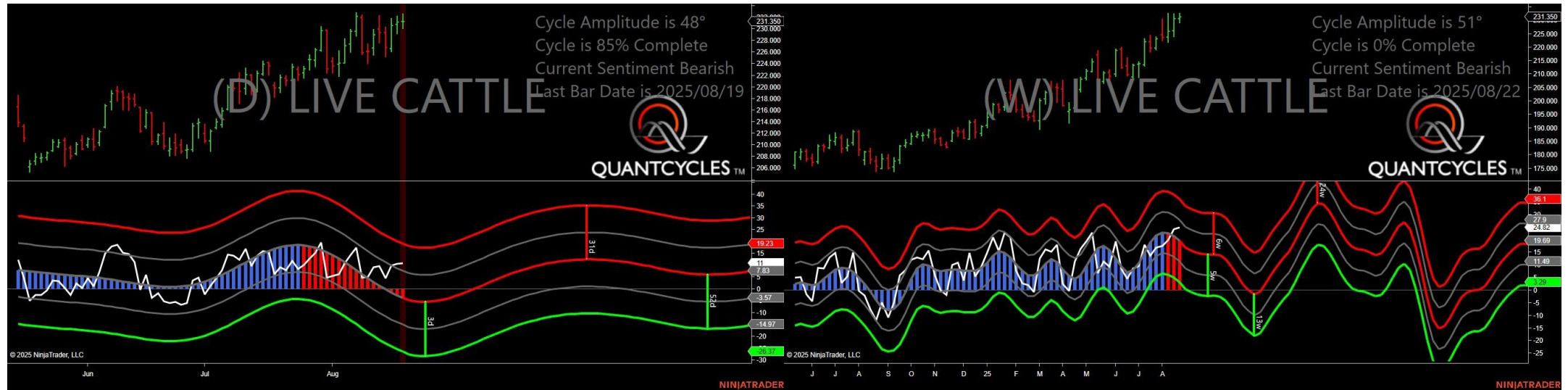
- Amplitude is 52° - Strong
- Direction Accuracy is 50%
- Market is at Support Extreme - Expect market consolidation Between \$90.05 and \$89.3

Coffee - Single Daily Extreme



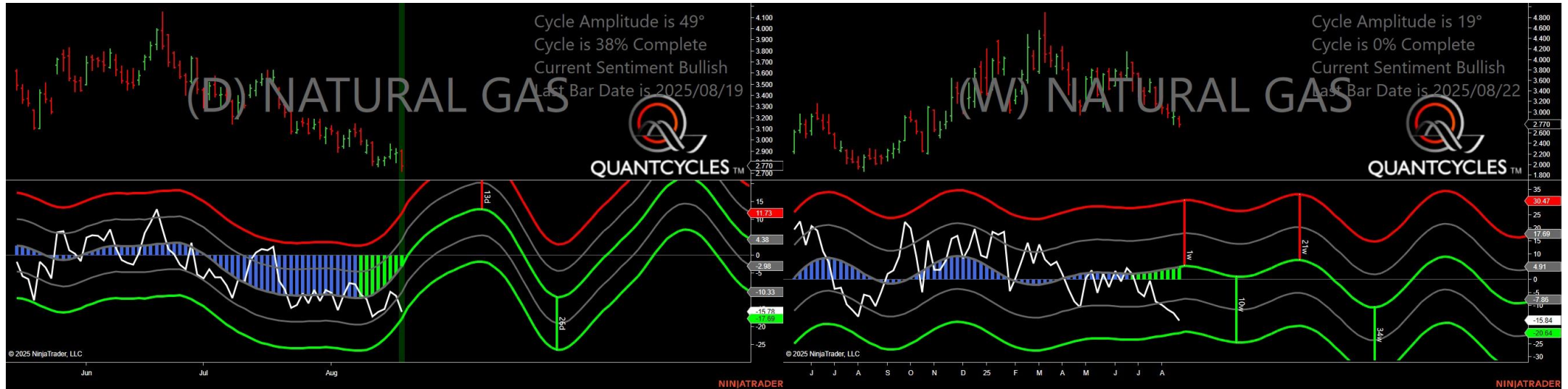
- Amplitude is 18° - Weak
- Direction Accuracy is 0%
- Market is at Resistance Extreme - Expect market consolidation Between \$352.05 and \$349.05

Live Cattle - Single Daily Extreme



- Amplitude is 48° - Strong
- Direction Accuracy is 0%
- Market is at Resistance Extreme - Expect market consolidation Between \$232.6 and \$231.35

Natural Gas - Single Daily Extreme



- Amplitude is 49° - Strong
- Direction Accuracy is 50%
- Market is at Support Extreme - Expect market consolidation Between \$2.77 and \$2.725

Palladium - Single Daily Extreme



- Amplitude is 70° - Strong
- Direction Accuracy is 50%
- Market is at Support Extreme - Expect market consolidation Between \$1117 and \$1110.5

Soybean Oil - Single Daily Extreme



- Amplitude is 16° - Weak
- Direction Accuracy is 50%
- Market is at Support Extreme - Expect market consolidation Between \$51.68 and \$51.59

Wheat - Single Daily Extreme



- Amplitude is 53° - Strong
- Direction Accuracy is 50%
- Market is at Support Extreme - Expect market consolidation Between \$498.5 and \$497.5

Analysis Charts

15 Charts

- CC - Cocoa
- CL - Crude Oil
- CT - Cotton
- GC - Gold
- HG - Copper
- HO - Heating Oil
- OJ - Oranje Juice
- PL - Platinum
- RB - Unleaded Gas
- SB - Sugar
- SI - Silver
- ZC - Corn
- ZM - Soybean Meal
- ZO - Oats
- ZS - Soybeans

Cocoa - Analysis Chart



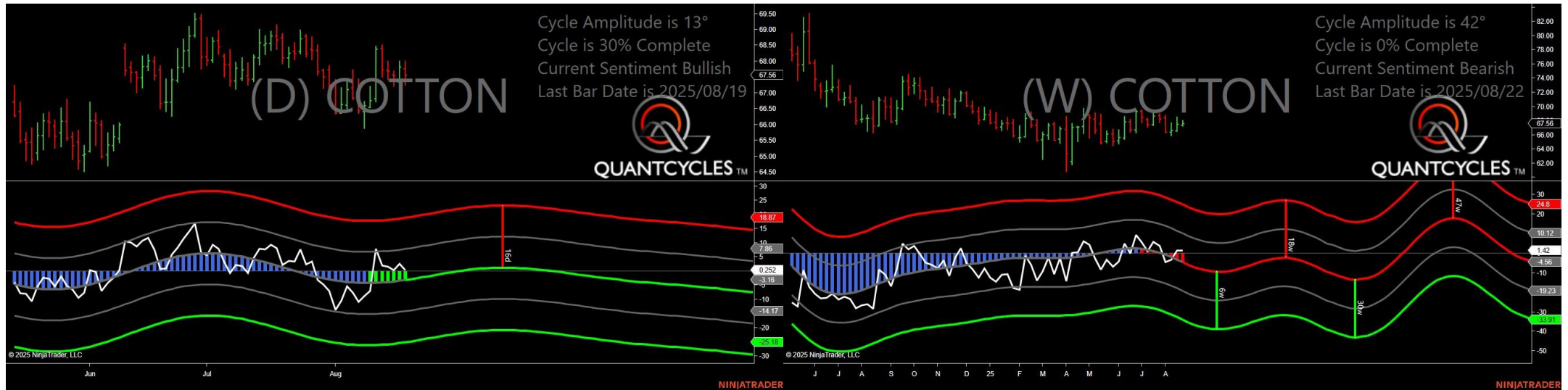
- Amplitude is 43° - Strong
- Direction Accuracy is 0%
- Market is at Resistance Extreme - Expect market consolidation Between \$8340 and \$8237

Crude Oil - Analysis Chart



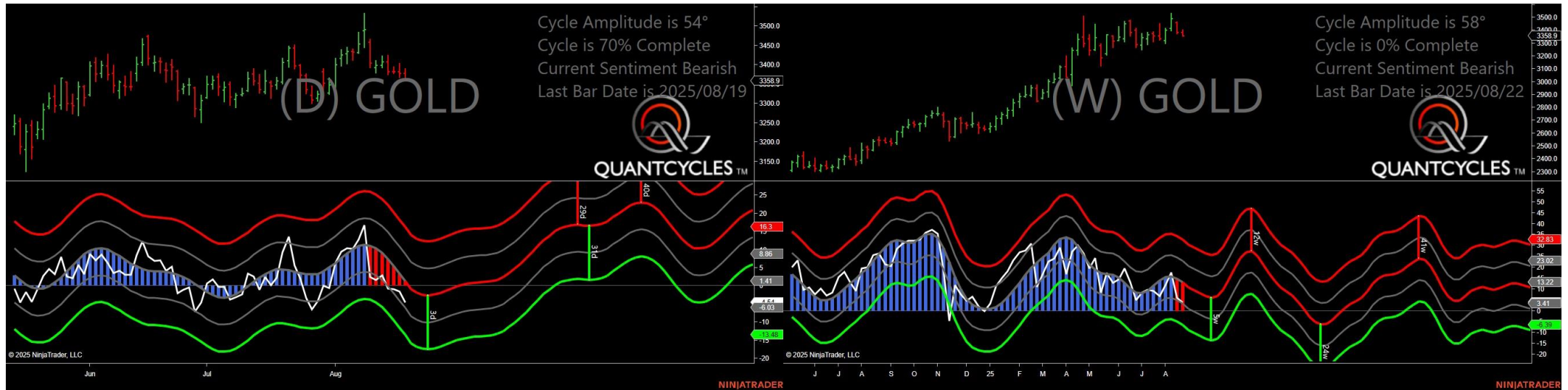
- Amplitude is 4° - Weak
- Direction Accuracy is 0%
- Market is at Resistance Extreme - Expect market consolidation Between \$62.68 and \$62.58

Cotton - Analysis Chart



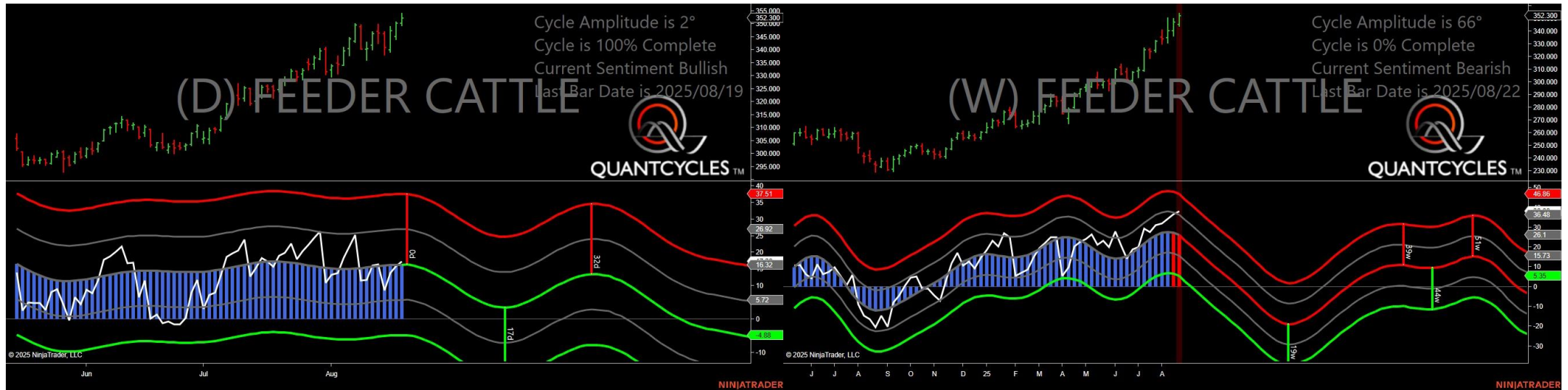
- Amplitude is 13° - Weak
- Direction Accuracy is 50%
- Market is at Support Extreme - Expect market consolidation Between \$67.56 and \$67.25

Gold - Analysis Chart



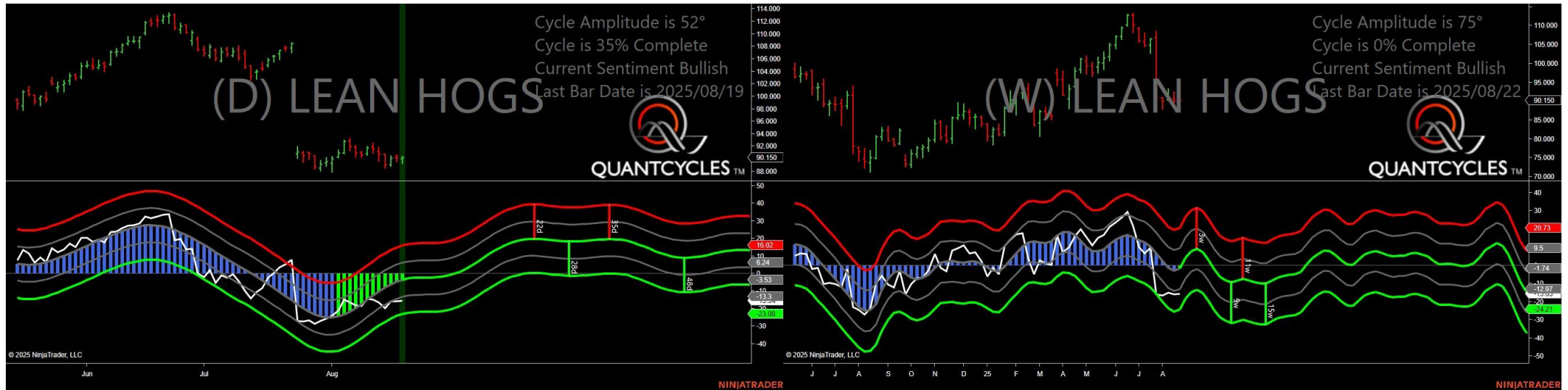
- Amplitude is 54° - Strong
- Direction Accuracy is 0%
- Market is at Resistance Extreme - Expect market consolidation Between \$3389.7 and \$3378.3

Feeder Cattle - Analysis Chart



- Amplitude is 2° - Weak
- Direction Accuracy is 50%
- Market is at Support Extreme - Expect market consolidation Between \$350.325 and \$349.45

Live Hogs - Analysis Chart



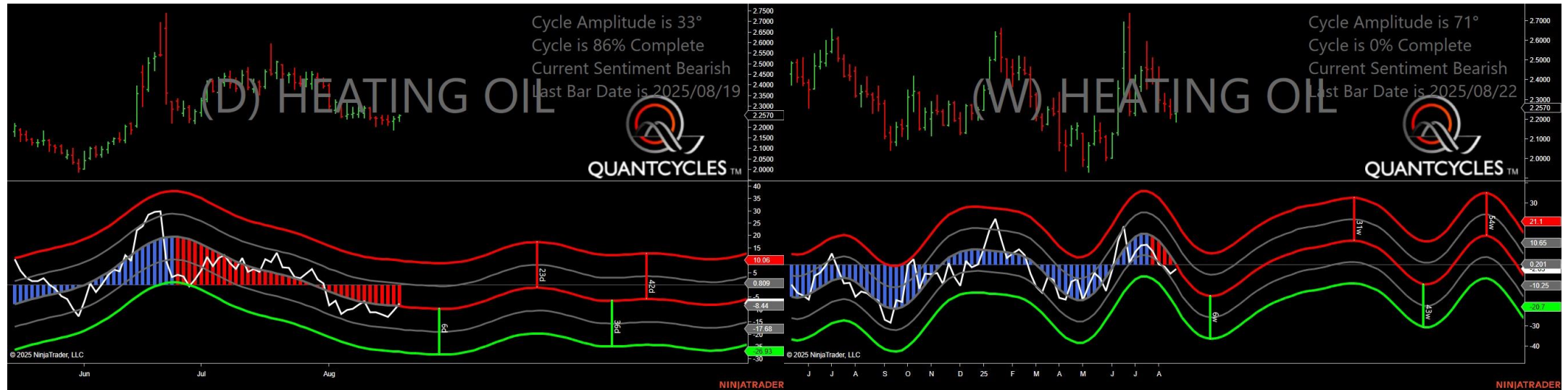
- Amplitude is 52° - Strong
- Direction Accuracy is 50%
- Market is at Support Extreme - Expect market consolidation Between \$90.05 and \$89.3

Copper - Analysis Chart



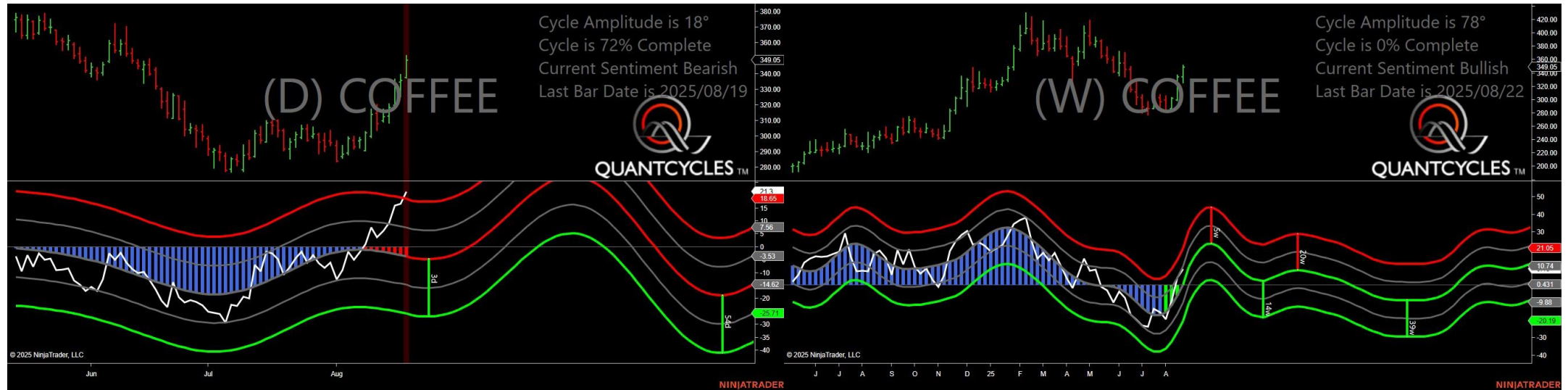
- Amplitude is 27° - Good
- Direction Accuracy is 0%
- Market is at Resistance Extreme - Expect market consolidation Between \$4.493 and \$4.4775

Heating Oil - Analysis Chart



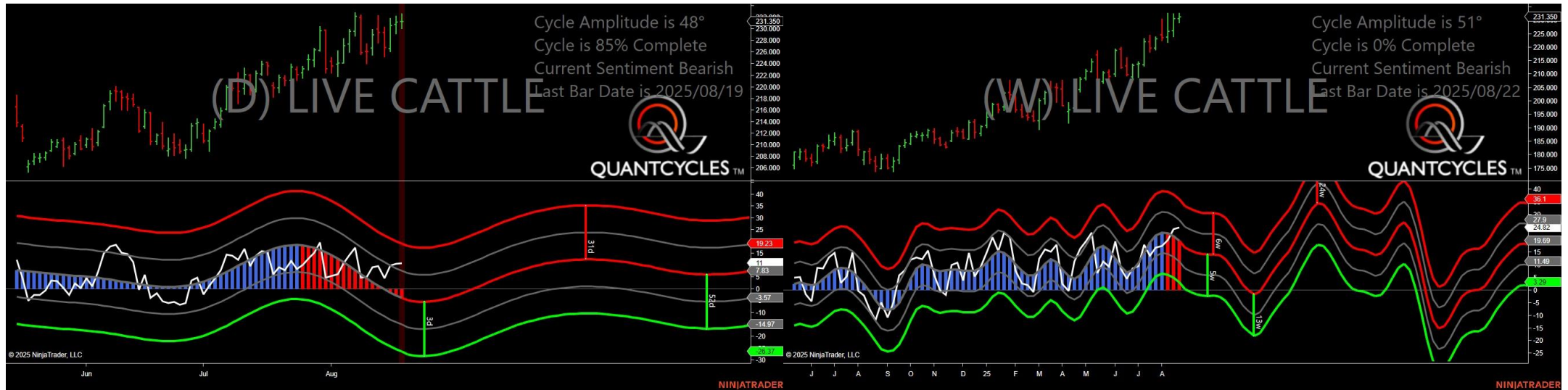
- Amplitude is 33° - Good
- Direction Accuracy is 0%
- Market is at Resistance Extreme - Expect market consolidation Between \$2.2597 and \$2.257

Coffee - Analysis Chart



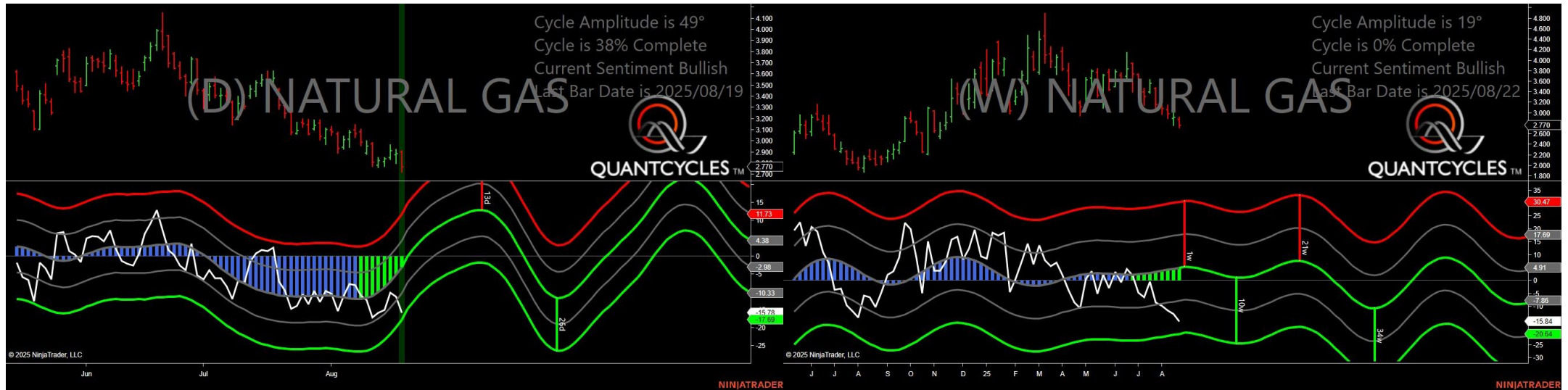
- Amplitude is 18° - Weak
- Direction Accuracy is 0%
- Market is at Resistance Extreme - Expect market consolidation Between \$352.05 and \$349.05

Live Cattle - Analysis Chart



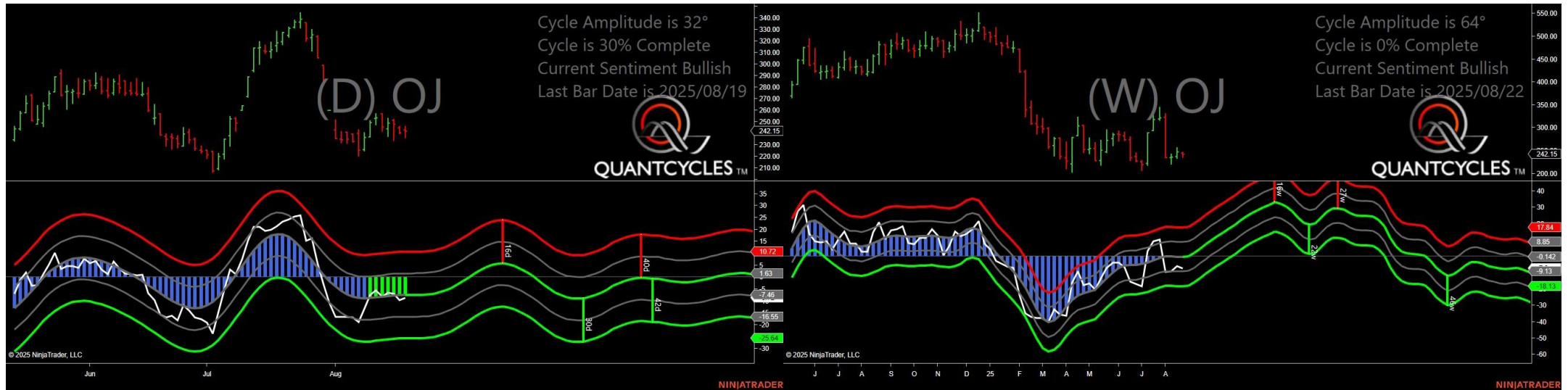
- Amplitude is 48° - Strong
- Direction Accuracy is 0%
- Market is at Resistance Extreme - Expect market consolidation Between \$232.6 and \$231.35

Natural Gas - Analysis Chart



- Amplitude is 49° - Strong
- Direction Accuracy is 50%
- Market is at Support Extreme - Expect market consolidation Between \$2.77 and \$2.725

Oranje Juice - Analysis Chart



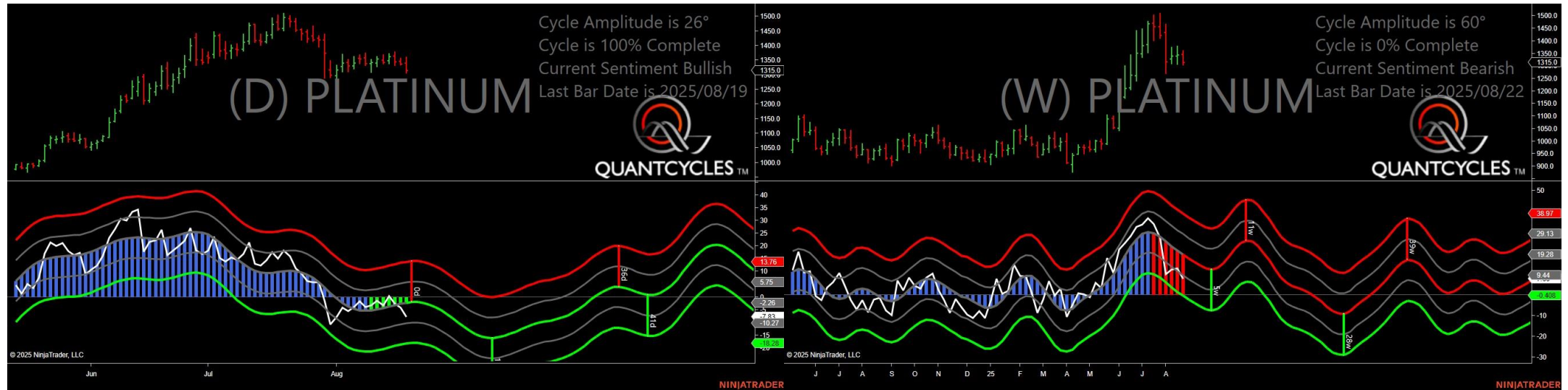
- Amplitude is 32° - Good
- Direction Accuracy is 50%
- Market is at Support Extreme - Expect market consolidation Between \$242.15 and \$236.6

Palladium - Analysis Chart



- Amplitude is 70° - Strong
- Direction Accuracy is 50%
- Market is at Support Extreme - Expect market consolidation Between \$1117 and \$1110.5

Platinum - Analysis Chart



- Amplitude is 26° - Good
- Direction Accuracy is 50%
- Market is at Support Extreme - Expect market consolidation Between \$1315 and \$1306.1

Unleaded Gas - Analysis Chart



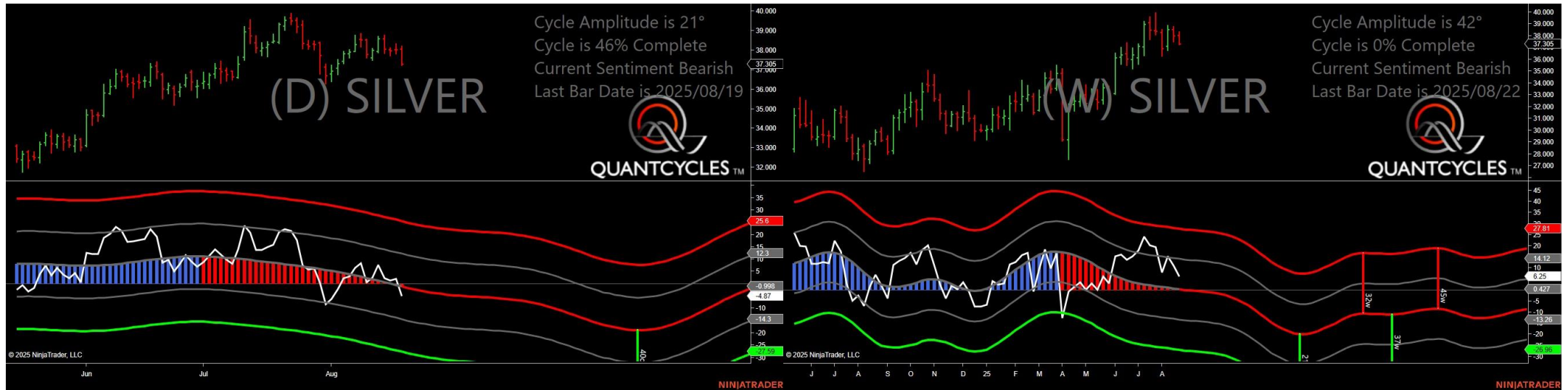
- Amplitude is 63° - Strong
- Direction Accuracy is 0%
- Market is at Resistance Extreme - Expect market consolidation Between \$2.1015 and \$2.1015

Sugar - Analysis Chart



- Amplitude is 14° - Weak
- Direction Accuracy is 0%
- Market is at Resistance Extreme - Expect market consolidation Between \$16.45 and \$16.31

Silver - Analysis Chart



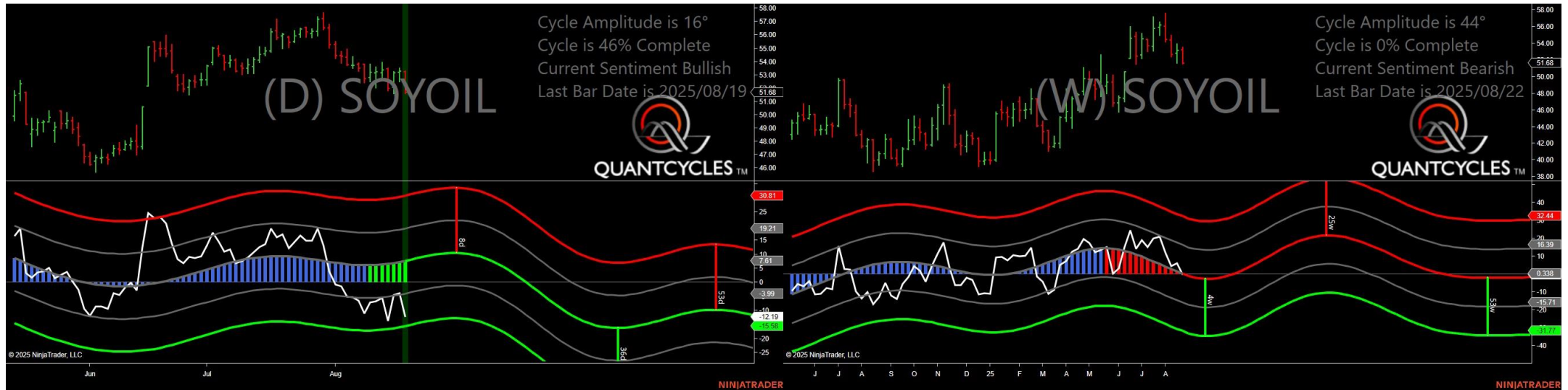
- Amplitude is 21° - Good
- Direction Accuracy is 0%
- Market is at Resistance Extreme - Expect market consolidation Between \$38.2 and \$38.075

Corn - Analysis Chart



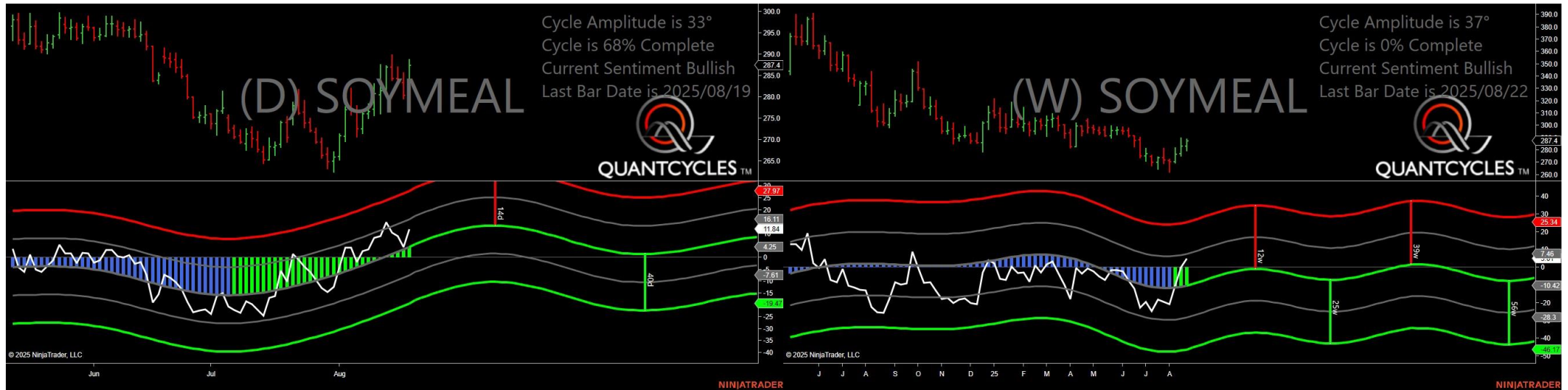
- Amplitude is 43° - Strong
- Direction Accuracy is 50%
- Market is at Support Extreme - Expect market consolidation Between \$379.5 and \$377.75

Soybean Oil - Analysis Chart



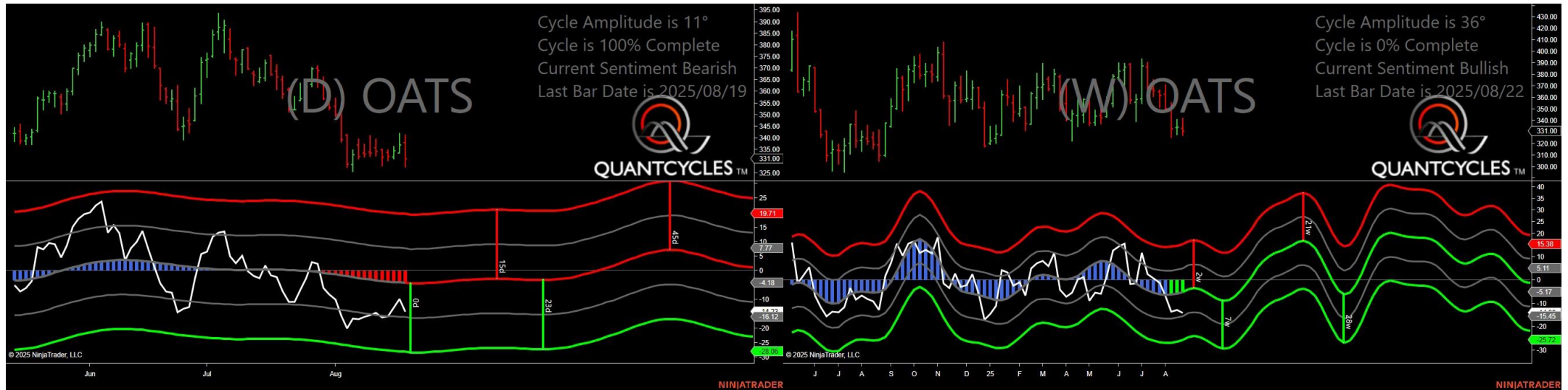
- Amplitude is 16° - Weak
- Direction Accuracy is 50%
- Market is at Support Extreme - Expect market consolidation Between \$51.68 and \$51.59

Soybean Meal - Analysis Chart



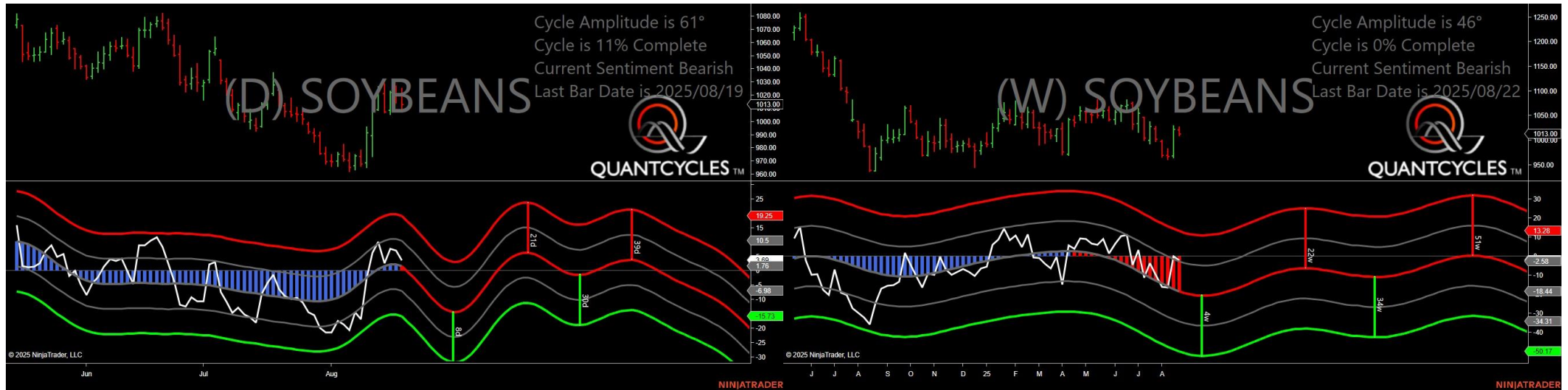
- Amplitude is 33° - Good
- Direction Accuracy is 50%
- Market is at Support Extreme - Expect market consolidation Between \$280.5 and \$280.5

Oats - Analysis Chart



- Amplitude is 11° - Weak
- Direction Accuracy is 0%
- Market is at Resistance Extreme - Expect market consolidation Between \$341.25 and \$338

Soybeans - Analysis Chart



- Amplitude is 61° - Strong
- Direction Accuracy is 0%
- Market is at Resistance Extreme - Expect market consolidation Between \$1025.25 and \$1021.5

Wheat - Analysis Chart



- Amplitude is 53° - Strong
- Direction Accuracy is 50%
- Market is at Support Extreme - Expect market consolidation Between \$498.5 and \$497.5