



QUANTCYCLES

COMMODITIES

OPPORTUNITIES & EXTREMES

About This Document

- This document contains two cyclical market patterns based on the QuantCycles Cycle Analysis Software
 - **Cycle Continuation Opportunity** – These are defined as a deviation of the forecast direction that extend to the upper or lower extremes. There is a high probability that the market will return to the forecast direction within a projected time frame. A Dual Opportunity has a higher probability of returning to the forecast direction than a Single Opportunity.
 - Always look for market commonality. For example, if you're looking at a DOW30 stock to buy, does the index look positive as well?
 - As the market approaches the cycle forecast turning point, the probability of the market following that direction decays. This is indicated by the "Cycle Percent Complete" note at the top of the chart, as well as predicted duration dates
 - At an Opportunity, a strong market may continue to go against the forecast trend, therefore, we recommend waiting for confirmation of the turning point before acting on it.
 - If the Market has not returned to the direction of the cycle by the minimum expected cycle duration date, consider the cycle incorrect.
 - **Cycle Extreme** – These are defined as a deviation of the forecast direction, but with a lessor probability of return to the forecast direction. A Dual Extreme is a stronger Support / Resistance than a Single Extreme.
 - The Cycle Continuation Opportunity information above applies here as well, but can be utilized more to take profits than to consider for entry
 - Indicates that a market is at or near a Cycle Support or Resistance.
 - There is a high probability of a market stall.

Analysis Overview

- 3 Single Extremes
- 20 Analysis

Cycle Extremes

3 Single Extremes

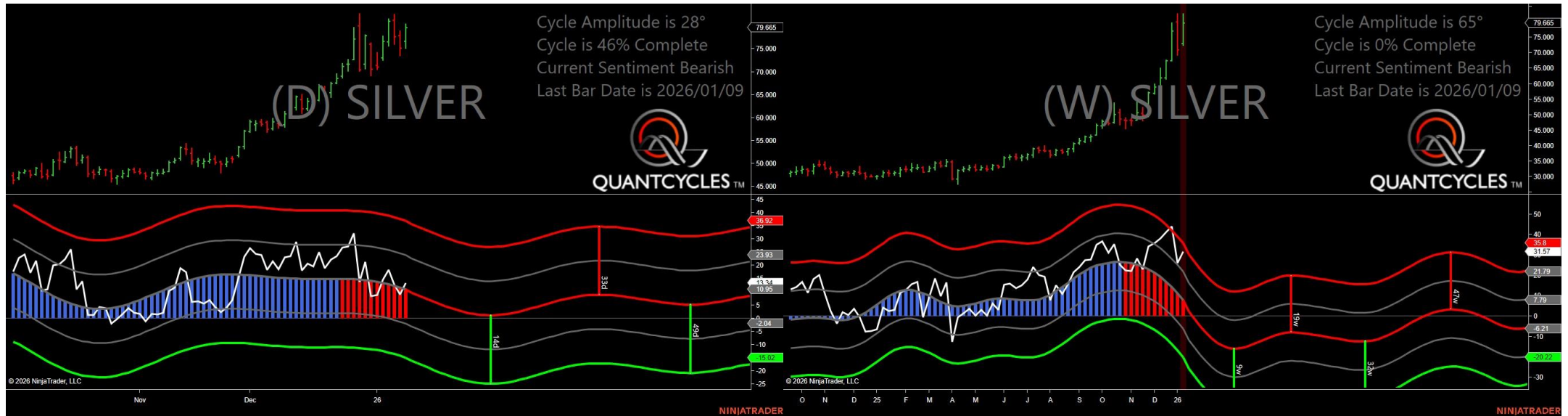
- HG - Copper
- SI - Silver
- ZL - Soybean Oil

Copper - Single Weekly Extreme



- Amplitude is 18° - Weak
- Direction Accuracy is 0%
- Market is at Resistance Extreme - Expect market consolidation Between \$5.939 and \$5.8895

Silver - Single Weekly Extreme



- Amplitude is 28° - Good
- Direction Accuracy is 0%
- Market is at Resistance Extreme - Expect market consolidation Between \$80.465 and \$79.665

Soybean Oil - Single Weekly Extreme



- Amplitude is 17° - Weak
- Direction Accuracy is 0%
- Market is at Resistance Extreme - Expect market consolidation Between \$50.02 and \$49.69

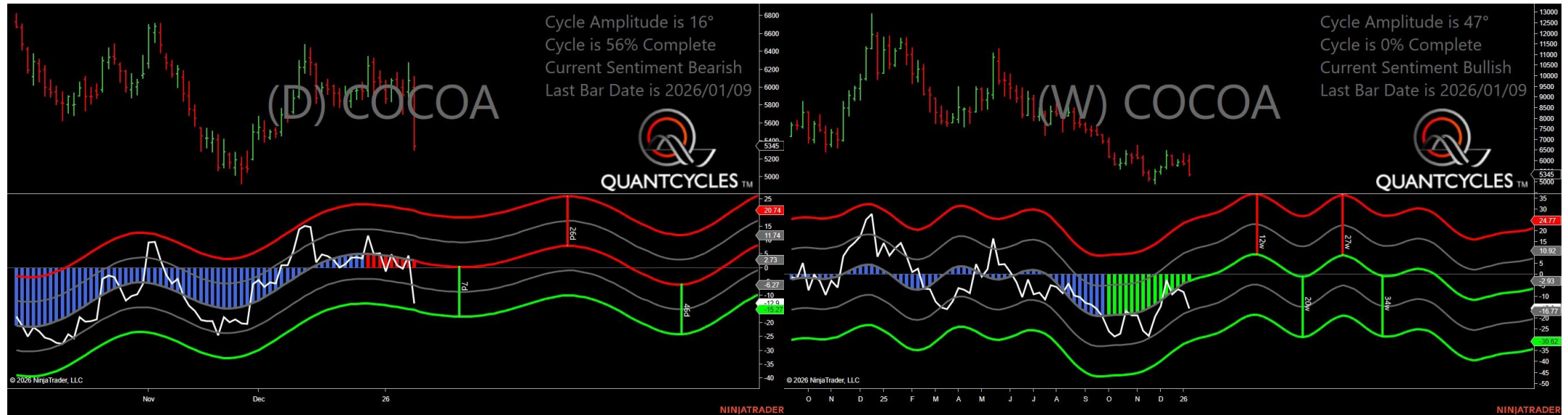
Analysis Charts

20 Charts

- CC - Cocoa
- CL - Crude Oil
- CT - Cotton
- GC - Gold
- GF - Feeder Cattle
- HE - Live Hogs
- HO - Heating Oil
- KC - Coffee
- LE - Live Cattle
- NG - Natural Gas
- OJ - Oranje Juice
- PA - Palladium
- PL - Platinum
- RB - Unleaded Gas
- SB - Sugar
- ZC - Corn
- ZM - Soybean Meal

- ZO - Oats
- ZS - Soybeans
- ZW - Wheat

Cocoa - Analysis Chart



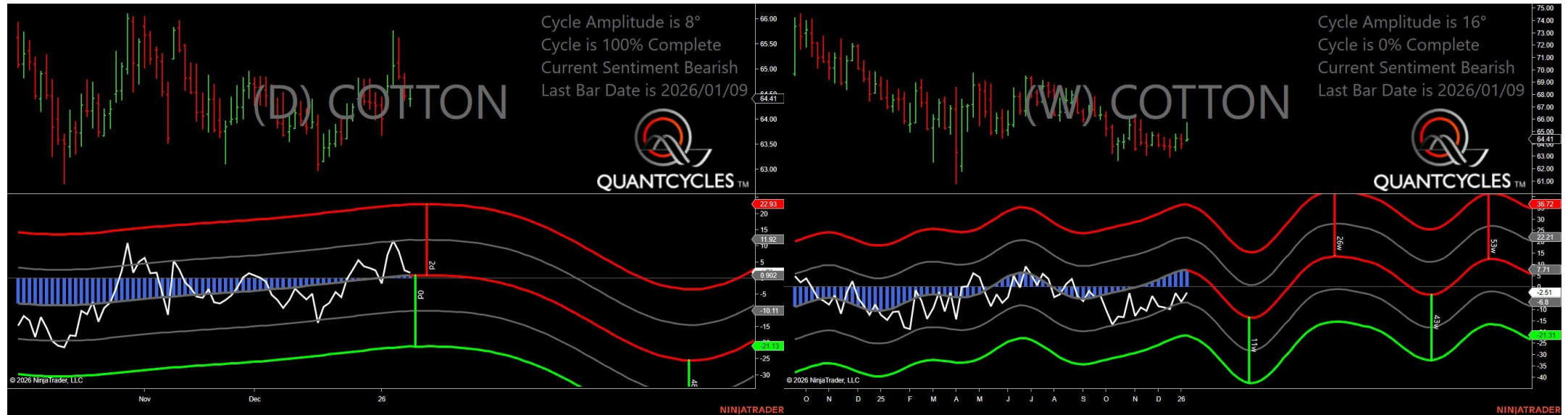
- Amplitude is 16° - Weak
- Direction Accuracy is 0%
- Market is at Resistance Extreme - Expect market consolidation Between \$6119 and \$5997

Crude Oil - Analysis Chart



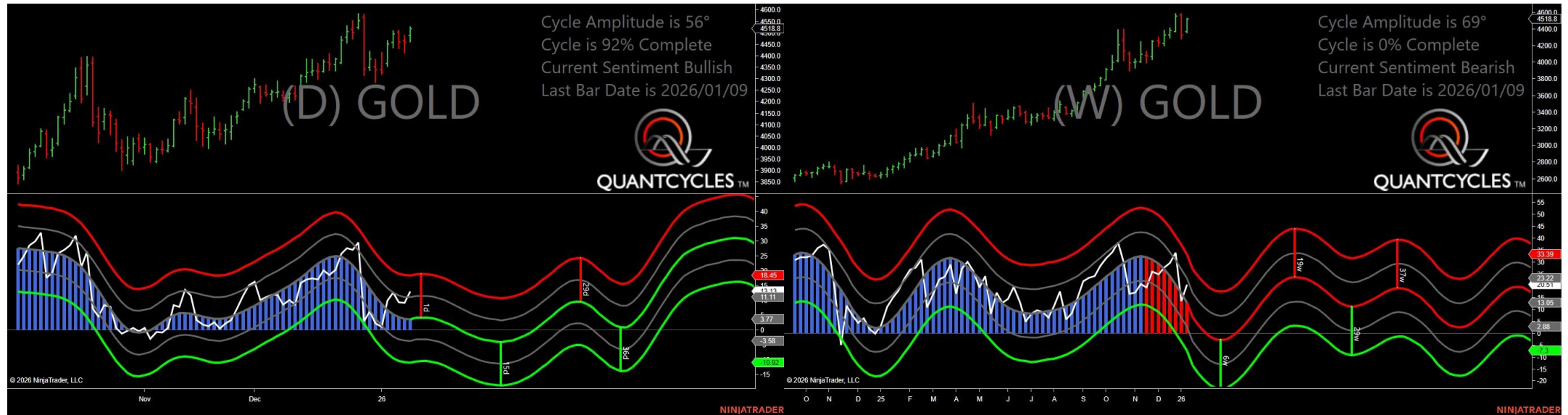
- Amplitude is 7° - Weak
- Direction Accuracy is 50%
- Market is at Support Extreme - Expect market consolidation Between \$58.4 and \$57.61

Cotton - Analysis Chart



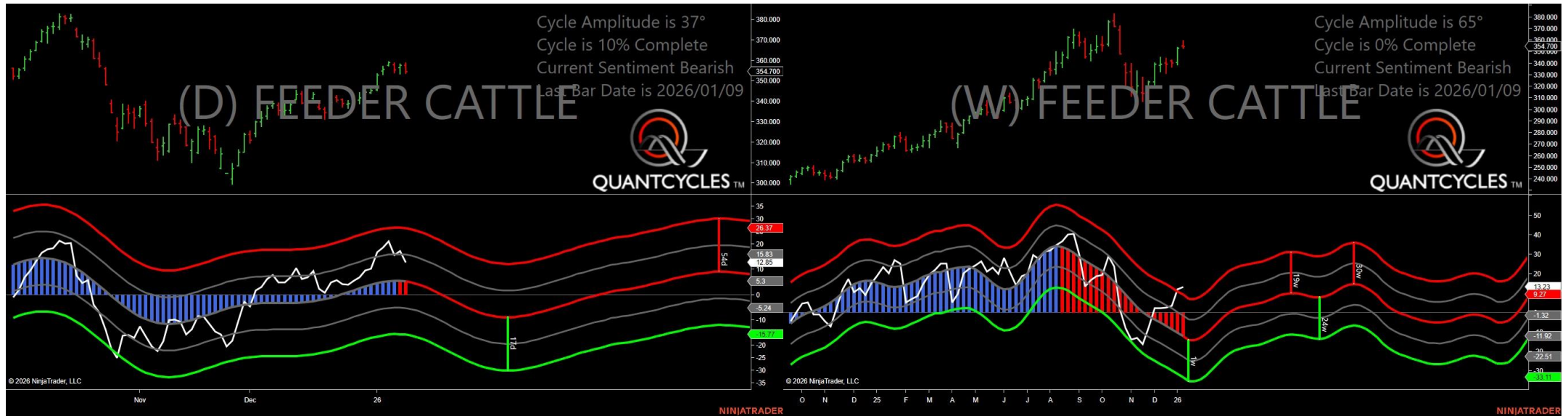
- Amplitude is 8° - Weak
- Direction Accuracy is 0%
- Market is at Resistance Extreme - Expect market consolidation Between \$64.66 and \$64.41

Gold - Analysis Chart



- Amplitude is 56° - Strong
- Direction Accuracy is 50%
- Market is at Support Extreme - Expect market consolidation Between \$4489.3 and \$4461.8

Feeder Cattle - Analysis Chart



- Amplitude is 37° - Good
- Direction Accuracy is 0%
- Market is at Resistance Extreme - Expect market consolidation Between \$358.85 and \$357.55

Live Hogs - Analysis Chart



- Amplitude is 42° - Strong
- Direction Accuracy is 0%
- Market is at Resistance Extreme - Expect market consolidation Between \$85.8 and \$85.375

Copper - Analysis Chart



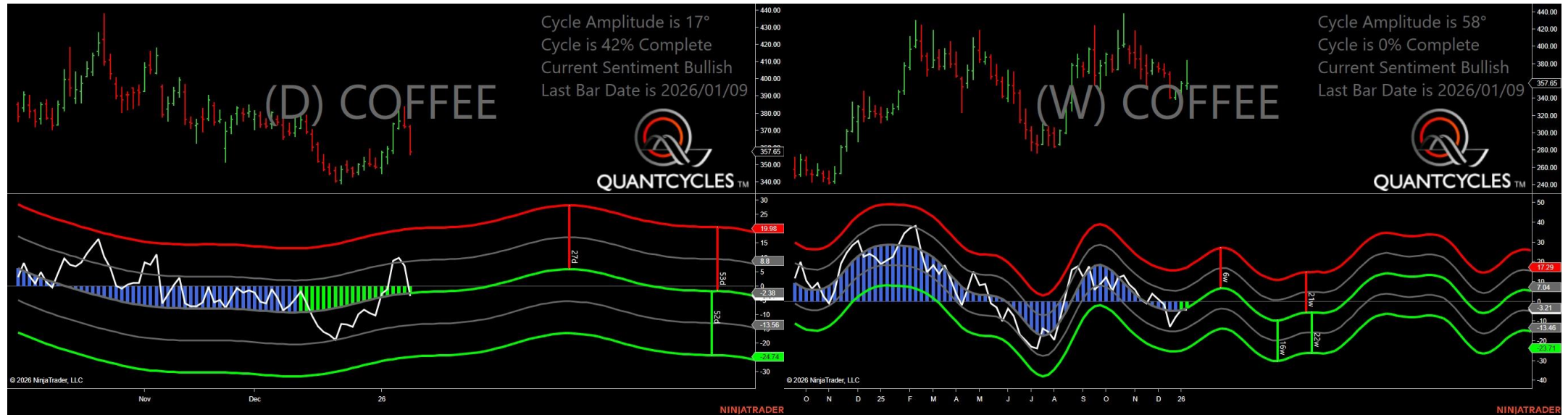
- Amplitude is 18° - Weak
- Direction Accuracy is 0%
- Market is at Resistance Extreme - Expect market consolidation Between \$5.939 and \$5.8895

Heating Oil - Analysis Chart



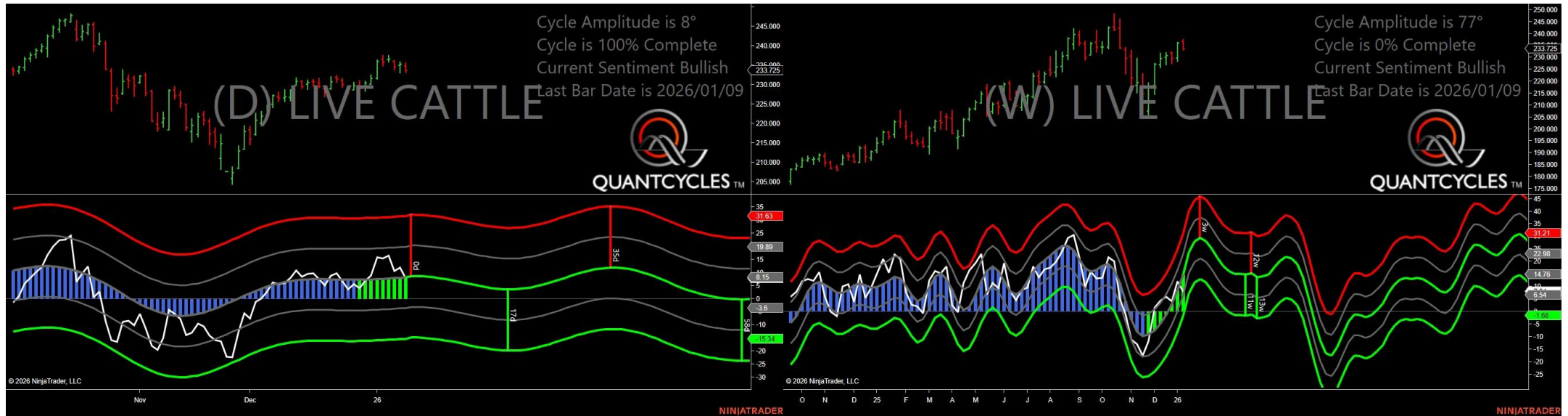
- Amplitude is 19° - Weak
- Direction Accuracy is 50%
- Market is at Support Extreme - Expect market consolidation Between \$2.1285 and \$2.1242

Coffee - Analysis Chart



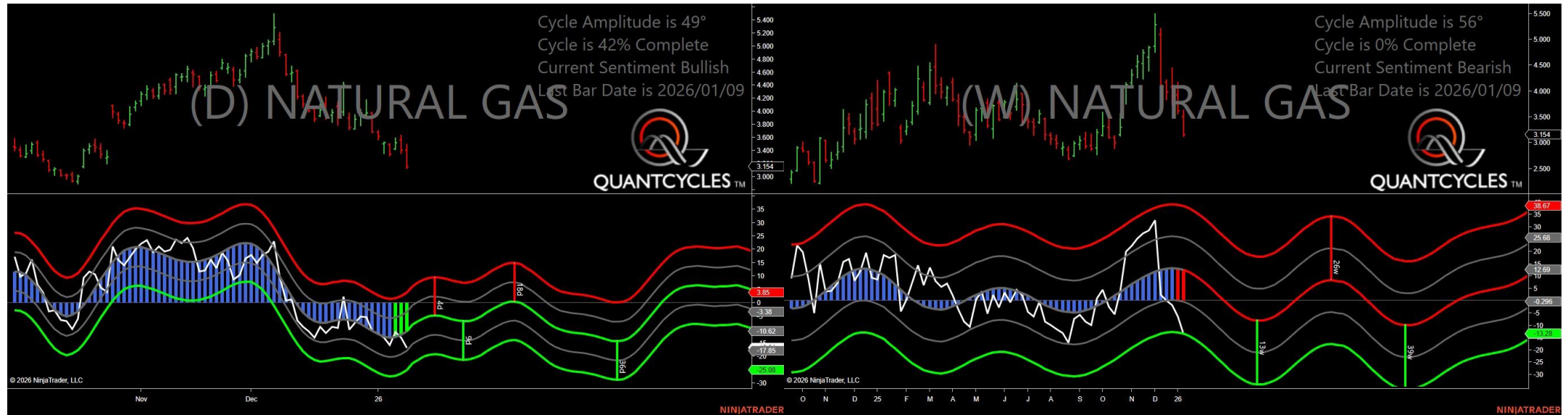
- Amplitude is 17° - Weak
- Direction Accuracy is 50%
- Market is at Support Extreme - Expect market consolidation Between \$357.65 and \$356.05

Live Cattle - Analysis Chart



- Amplitude is 8° - Weak
- Direction Accuracy is 50%
- Market is at Support Extreme - Expect market consolidation Between \$233.725 and \$233.175

Natural Gas - Analysis Chart



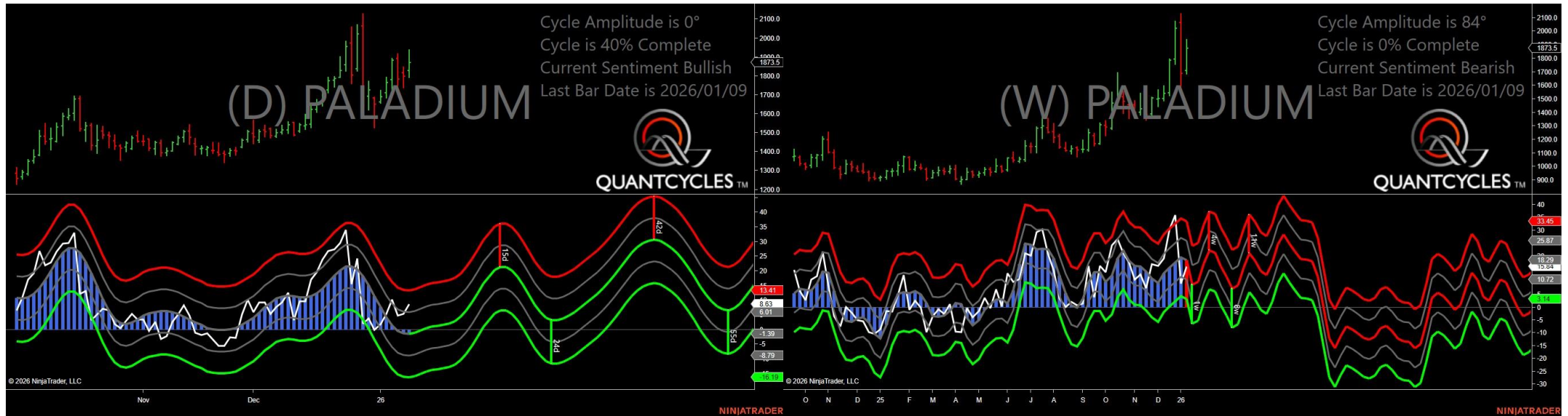
- Amplitude is 49° - Strong
- Direction Accuracy is 50%
- Market is at Support Extreme - Expect market consolidation Between \$3.154 and \$3.131

Oranje Juice - Analysis Chart



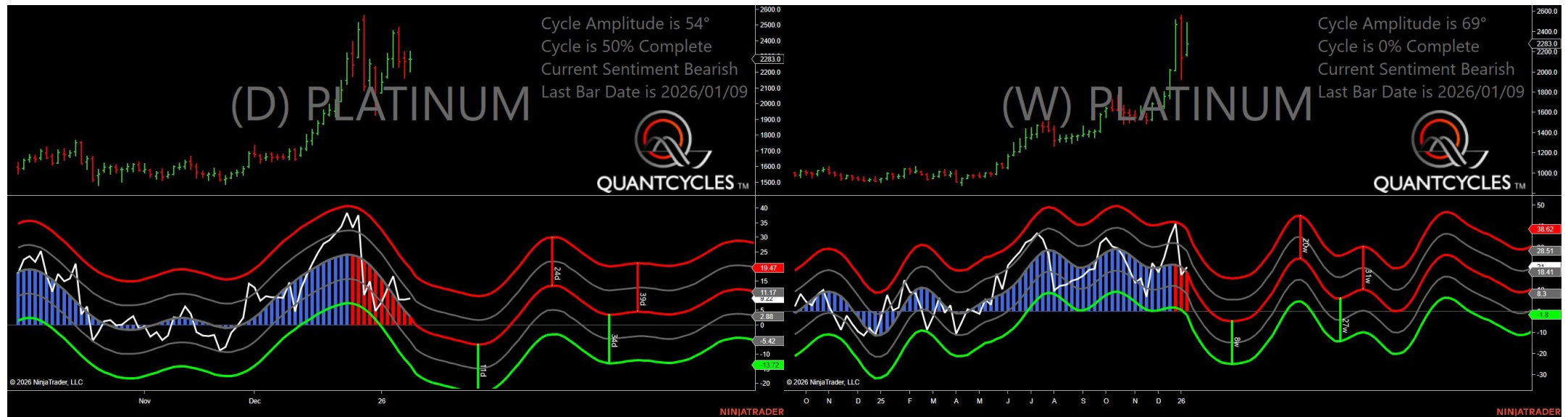
- Amplitude is 51° - Strong
- Direction Accuracy is 0%
- Market is at Resistance Extreme - Expect market consolidation Between \$216.5 and \$215.25

Palladium - Analysis Chart



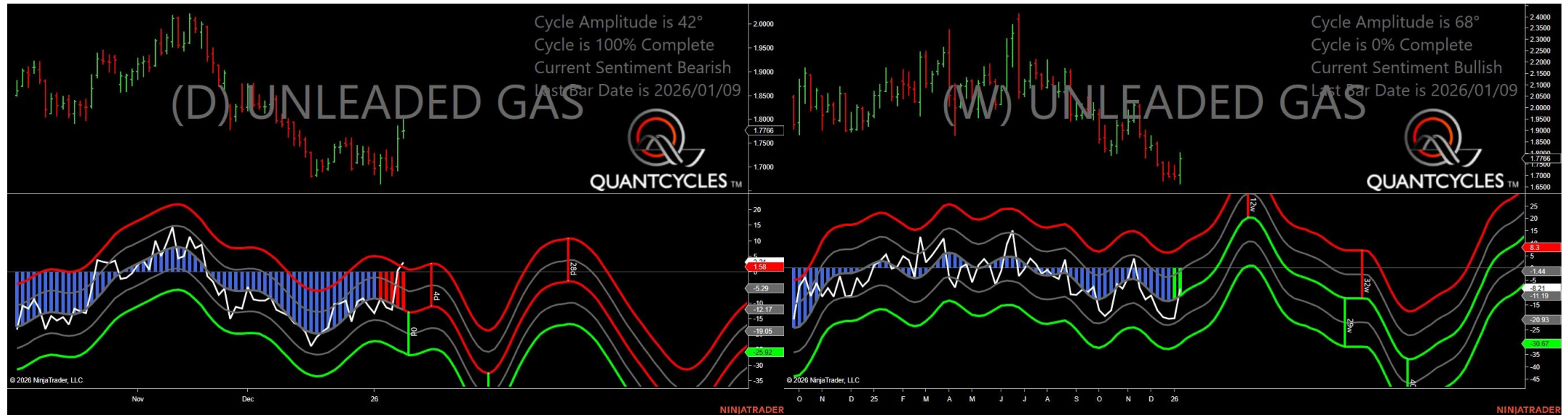
- Amplitude is 0° - Weak
- Direction Accuracy is 50%
- Market is at Support Extreme - Expect market consolidation Between \$1830 and \$1793

Platinum - Analysis Chart



- Amplitude is 54° - Strong
- Direction Accuracy is 0%
- Market is at Resistance Extreme - Expect market consolidation Between \$2333.3 and \$2283

Unleaded Gas - Analysis Chart



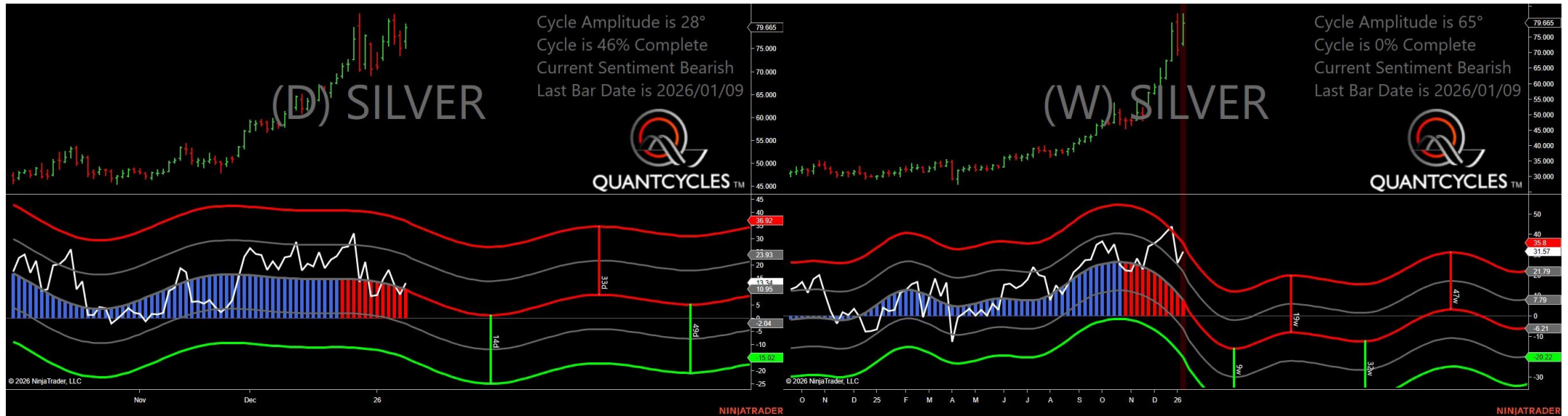
- Amplitude is 42° - Strong
- Direction Accuracy is 0%
- Market is at Resistance Extreme - Expect market consolidation Between \$1.801 and \$1.7766

Sugar - Analysis Chart



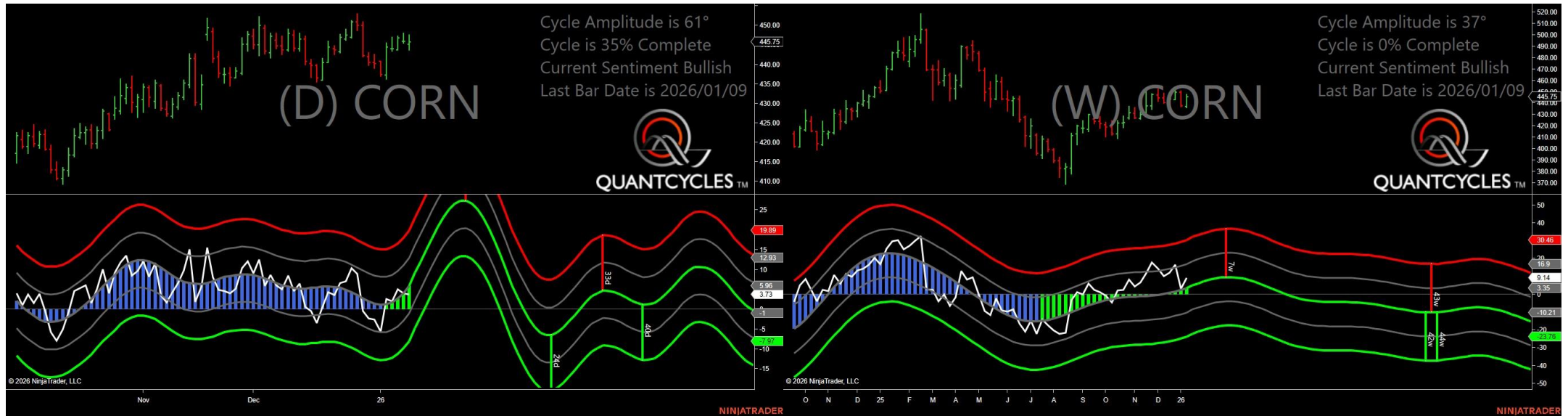
- Amplitude is 31° - Good
- Direction Accuracy is 50%
- Market is at Support Extreme - Expect market consolidation Between \$14.89 and \$14.78

Silver - Analysis Chart



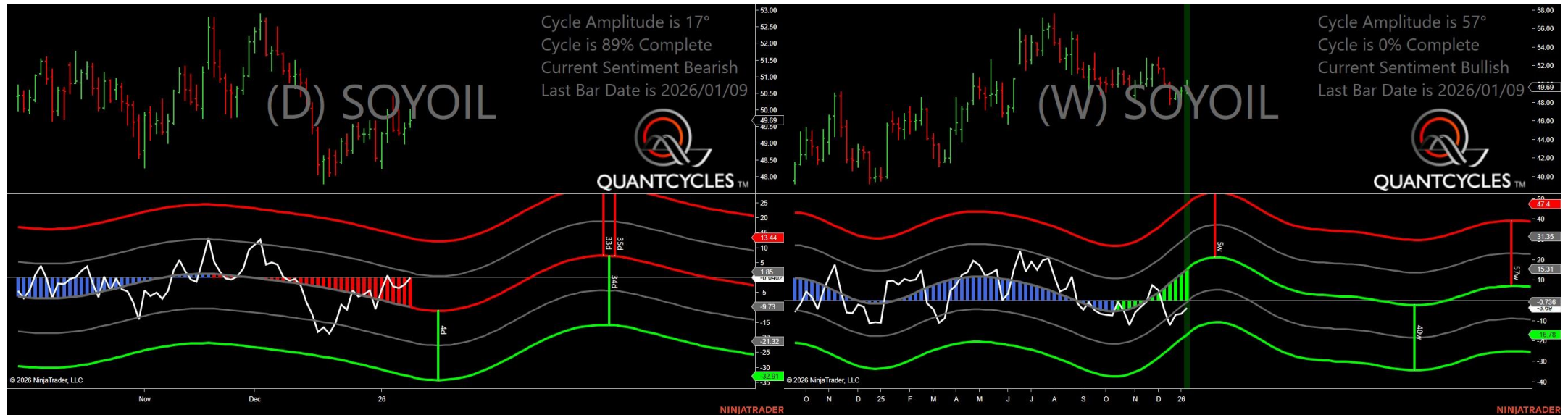
- Amplitude is 28° - Good
- Direction Accuracy is 0%
- Market is at Resistance Extreme - Expect market consolidation Between \$80.465 and \$79.665

Corn - Analysis Chart



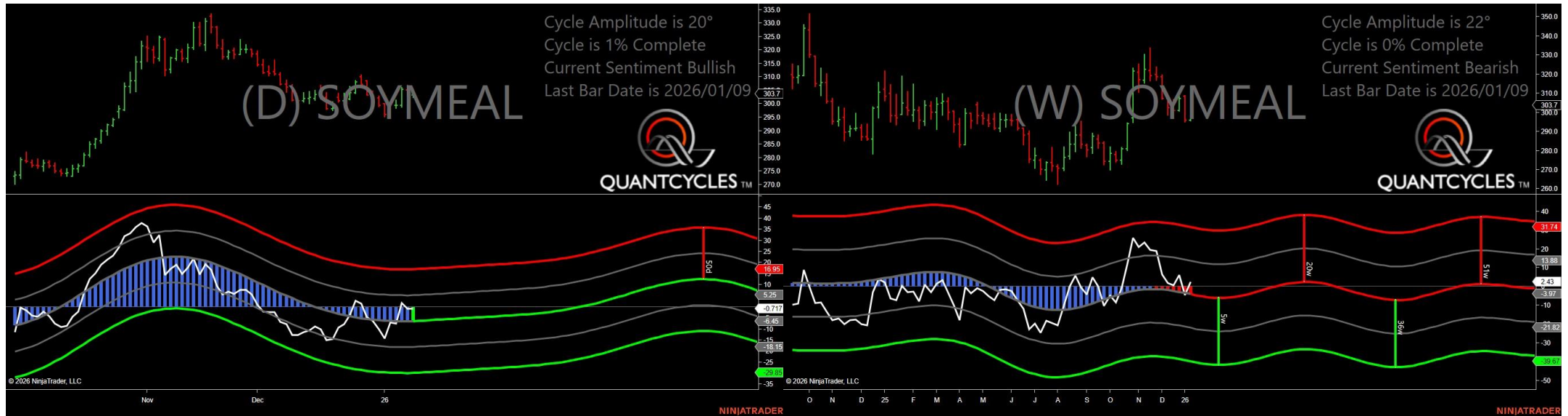
- Amplitude is 61° - Strong
- Direction Accuracy is 50%
- Market is at Support Extreme - Expect market consolidation Between \$445.25 and \$443.75

Soybean Oil - Analysis Chart



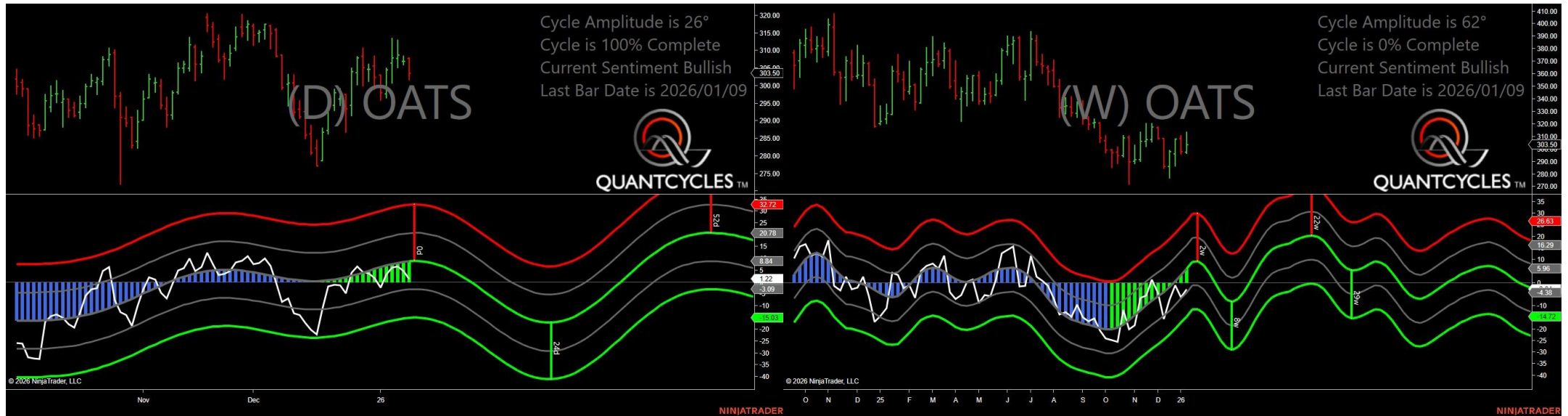
- Amplitude is 17° - Weak
- Direction Accuracy is 0%
- Market is at Resistance Extreme - Expect market consolidation Between \$50.02 and \$49.69

Soybean Meal - Analysis Chart



- Amplitude is 20° - Weak
- Direction Accuracy is 50%
- Market is at Support Extreme - Expect market consolidation Between \$303.2 and \$302.5

Oats - Analysis Chart



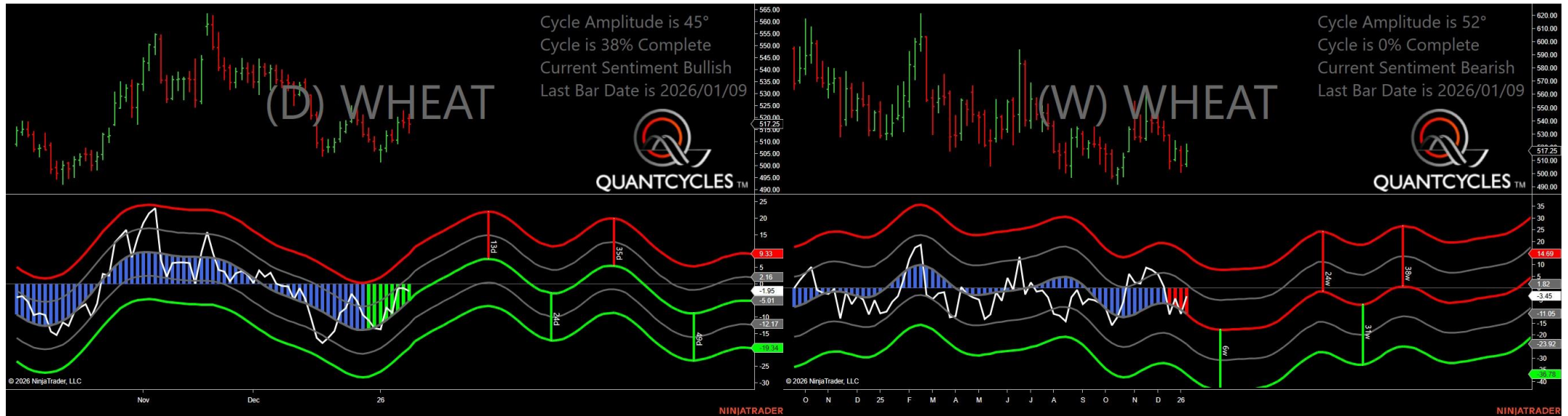
- Amplitude is 26° - Good
- Direction Accuracy is 50%
- Market is at Support Extreme - Expect market consolidation Between \$303.5 and \$301.75

Soybeans - Analysis Chart



- Amplitude is 40° - Good
- Direction Accuracy is 50%
- Market is at Support Extreme - Expect market consolidation Between \$1061.5 and \$1061.5

Wheat - Analysis Chart



- Amplitude is 45° - Strong
- Direction Accuracy is 50%
- Market is at Support Extreme - Expect market consolidation Between \$517.25 and \$513.75