



QUANTCYCLES

FINANCIALS

OPPORTUNITIES & EXTREMES

About This Document

- This document contains two cyclical market patterns based on the QuantCycles Cycle Analysis Software
- **Cycle Continuation Opportunity** – These are defined as a deviation of the forecast direction that extend to the upper or lower extremes. There is a high probability that the market will return to the forecast direction within a projected time frame. A Dual Opportunity has a higher probability of returning to the forecast direction than a Single Opportunity.
 - Always look for market commonality. For example, if you're looking at a DOW30 stock to buy, does the index look positive as well?
 - As the market approaches the cycle forecast turning point, the probability of the market following that direction decays. This is indicated by the "Cycle Percent Complete" note at the top of the chart, as well as predicted duration dates
 - At an Opportunity, a strong market may continue to go against the forecast trend, therefore, we recommend waiting for confirmation of the turning point before acting on it.
 - If the Market has not returned to the direction of the cycle by the minimum expected cycle duration date, consider the cycle incorrect.
- **Cycle Extreme** – These are defined as a deviation of the forecast direction, but with a lessor probability of return to the forecast direction. A Dual Extreme is a stronger Support / Resistance than a Single Extreme.
 - The Cycle Continuation Opportunity information above applies here as well, but can be utilized more to take profits than to consider for entry
 - Indicates that a market is at or near a Cycle Support or Resistance.
 - There is a high probability of a market stall.

Analysis Overview

- 4 Single Opportunities
- 2 Dual Extremes
- 18 Single Extremes
- 131 Analysis

Cycle Continuation Opportunities

4 Single Opportunities

- FMC - xxx
- GPS - xxx
- MLM - xxx
- WELL - xxx

xxx - Single Daily Opportunity



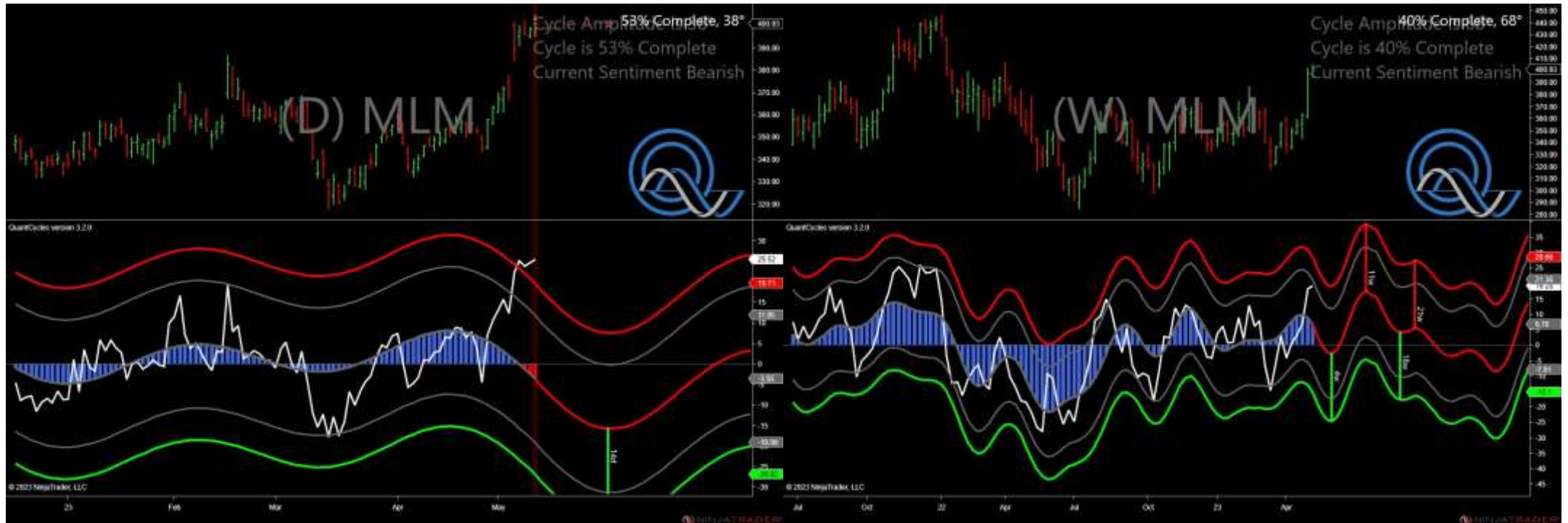
- Projected Direction Up with an Accuracy of 85.9%, and a Good Amplitude of 23°
- Expected Duration of Cycle is between 5/22/2023 and 5/25/2023
- Expected Price Movement of Cycle is between \$8.40 and \$9.79, with the asset price between \$118.98 and \$120.37

xxx - Single Weekly Opportunity



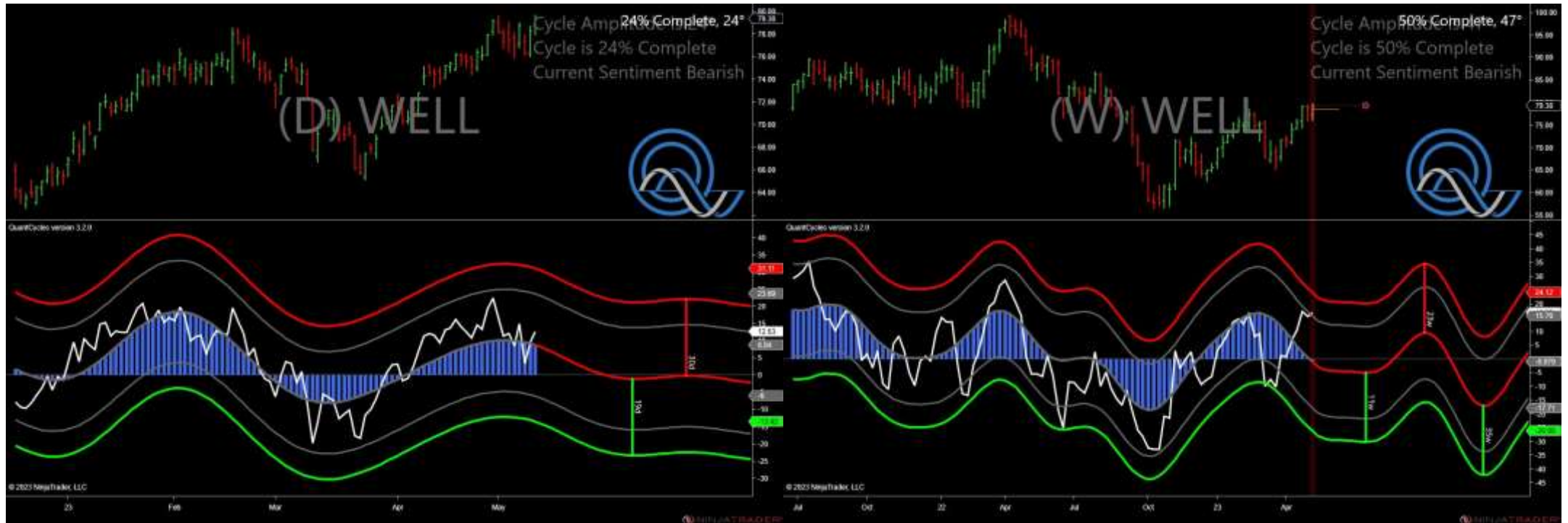
- Projected Direction Up with an Accuracy of 75.5%, and a Good Amplitude of 31°
- Expected Duration of Cycle to 5/22/2023
- Expected Price Movement of Cycle is between \$0.72 and \$0.96, with the asset price between \$9.07 and \$9.31

xxx - Single Daily Opportunity



- Projected Direction Down with an Accuracy of 77.6%, and a Good Amplitude of 38°
- Expected Duration of Cycle is between 5/23/2023 and 6/1/2023
- Expected Price Movement of Cycle is between \$37.58 and \$48.43, with the asset price between \$363.35 and \$352.50

xxx - Single Weekly Opportunity



- Projected Direction Down with an Accuracy of 81.3%, and a Good Amplitude of 24°
- Expected Duration of Cycle is between 5/29/2023 and 6/8/2023
- Expected Price Movement of Cycle is between \$3.78 and \$4.65, with the asset price between \$75.60 and \$74.73

Cycle Extremes

2 Dual Extremes

- ADM - xxx
- HAL - xxx

18 Single Extremes

- BAC - xxx
- BK - xxx
- CMI - xxx
- CTAS - xxx
- HAS - xxx
- IBM - xxx
- IP - xxx
- K - xxx
- LLY - xxx
- QCOM - xxx
- RCL - xxx
- SCHW - xxx
- SO - xxx
- STT - xxx

- TXN - xxx
- TXT - xxx
- VRSN - xxx
- WM - xxx

xxx - Dual Extreme



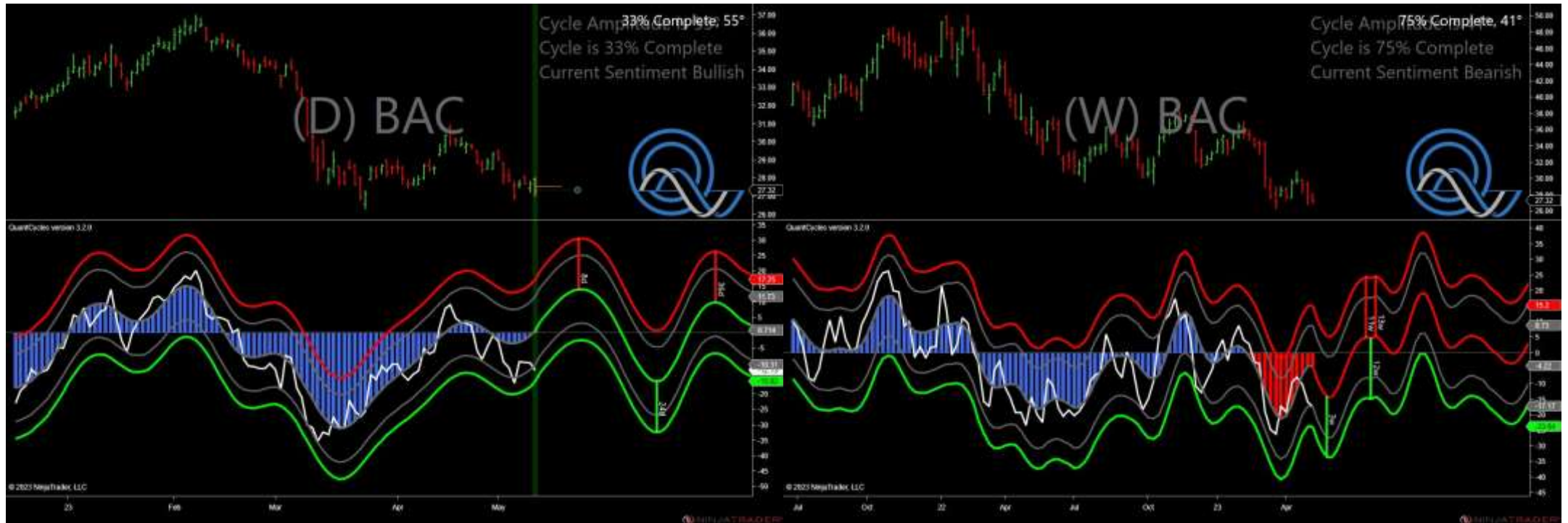
- Amplitude is 18° - Weak
- Direction Accuracy is 67.3%
- Market is at Support Extreme - Expect market consolidation Between \$74.64 and \$74.41

xxx - Dual Extreme



- Amplitude is 12° - Weak
- Direction Accuracy is 84.3%
- Market is at Support Extreme - Expect market consolidation Between \$29.56 and \$29.21

xxx - Single Daily Extreme



- Amplitude is 55° - Strong
- Direction Accuracy is 55.2%
- Market is at Support Extreme - Expect market consolidation Between \$27.32 and \$27.02

xxx - Single Weekly Extreme



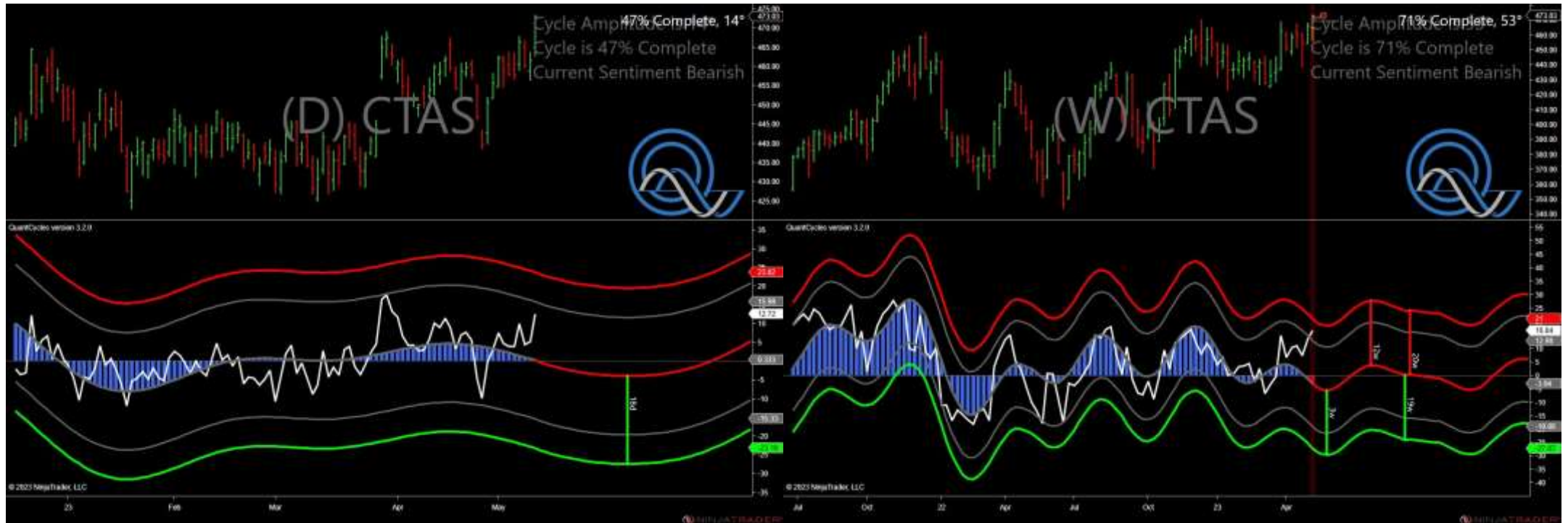
- Amplitude is 18° - Weak
- Direction Accuracy is 84.1%
- Market is at Resistance Extreme - Expect market consolidation Between \$42.09 and \$41.9

xxx - Single Daily Extreme



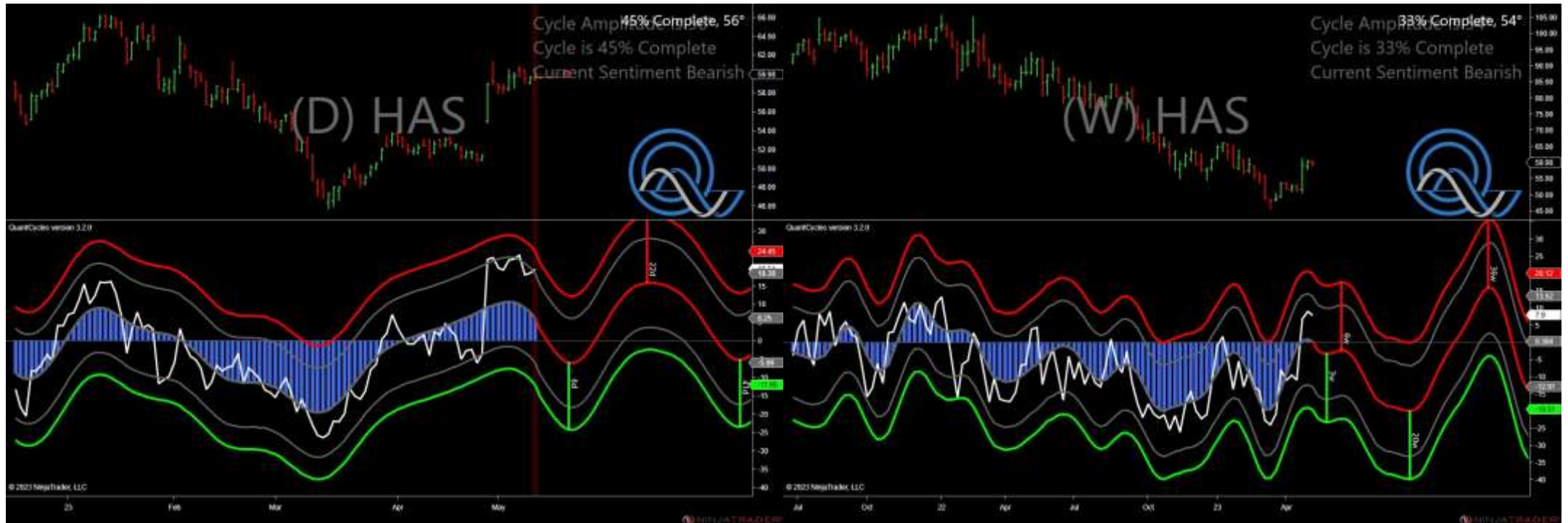
- Amplitude is 26° - Good
- Direction Accuracy is 55%
- Market is at Support Extreme - Expect market consolidation Between \$215.55 and \$213.96

xxx - Single Weekly Extreme



- Amplitude is 14° - Weak
- Direction Accuracy is 91.2%
- Market is at Resistance Extreme - Expect market consolidation Between \$473.37 and \$473.03

xxx - Single Daily Extreme



- Amplitude is 56° - Strong
- Direction Accuracy is 68.3%
- Market is at Resistance Extreme - Expect market consolidation Between \$60.51 and \$60.47

xxx - Single Weekly Extreme



- Amplitude is 23° - Good
- Direction Accuracy is 64.9%
- Market is at Resistance Extreme - Expect market consolidation Between \$122.49 and \$122.02

xxx - Single Daily Extreme



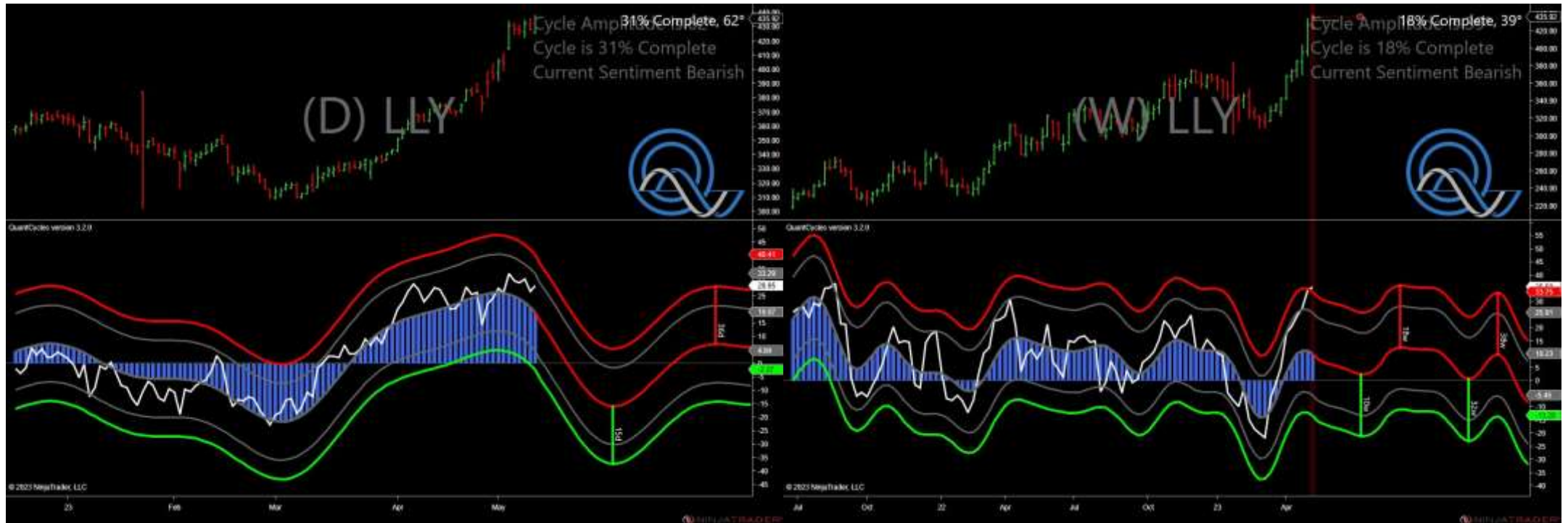
- Amplitude is 15° - Weak
- Direction Accuracy is 60.9%
- Market is at Support Extreme - Expect market consolidation Between \$31.89 and \$31.41

xxx - Single Weekly Extreme



- Amplitude is 39° - Good
- Direction Accuracy is 57.6%
- Market is at Resistance Extreme - Expect market consolidation Between \$70.99 and \$70.55

xxx - Single Weekly Extreme



- Amplitude is 62° - Strong
- Direction Accuracy is 56.9%
- Market is at Resistance Extreme - Expect market consolidation Between \$438.39 and \$435.92

xxx - Single Daily Extreme



- Amplitude is 16° - Weak
- Direction Accuracy is 81%
- Market is at Support Extreme - Expect market consolidation Between \$106.46 and \$105.14

xxx - Single Weekly Extreme



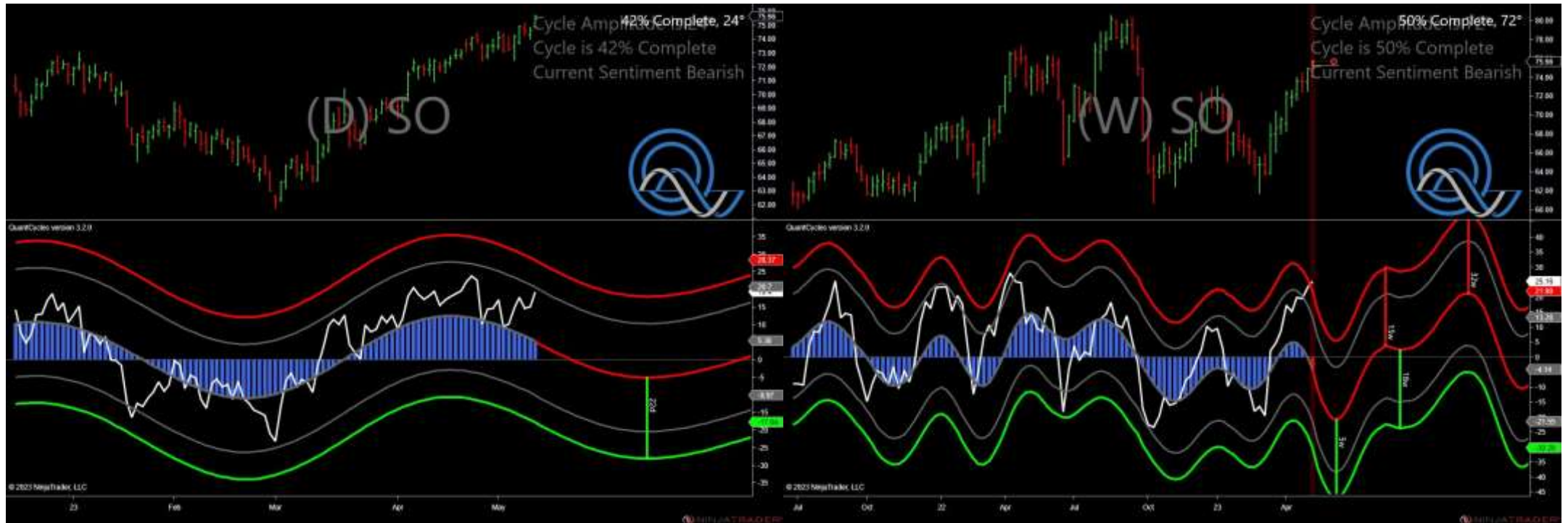
- Amplitude is 29° - Good
- Direction Accuracy is 81.1%
- Market is at Support Extreme - Expect market consolidation Between \$77.16 and \$75.83

xxx - Single Weekly Extreme



- Amplitude is 19° - Weak
- Direction Accuracy is 87.4%
- Market is at Resistance Extreme - Expect market consolidation Between \$48.72 and \$48.64

xxx - Single Weekly Extreme



- Amplitude is 24° - Good
- Direction Accuracy is 72.8%
- Market is at Resistance Extreme - Expect market consolidation Between \$75.75 and \$75.66

xxx - Single Weekly Extreme



- Amplitude is 16° - Weak
- Direction Accuracy is 93.3%
- Market is at Resistance Extreme - Expect market consolidation Between \$69.95 and \$69.94

xxx - Single Weekly Extreme



- Amplitude is 21° - Good
- Direction Accuracy is 84.4%
- Market is at Resistance Extreme - Expect market consolidation Between \$165 and \$164.81

xxx - Single Weekly Extreme



- Amplitude is 18° - Weak
- Direction Accuracy is 76.7%
- Market is at Support Extreme - Expect market consolidation Between \$64.78 and \$64.17

xxx - Single Weekly Extreme



- Amplitude is 9° - Weak
- Direction Accuracy is 40.7%
- Market is at Support Extreme - Expect market consolidation Between \$219.69 and \$218.75

xxx - Single Weekly Extreme



- Amplitude is 17° - Weak
- Direction Accuracy is 83.2%
- Market is at Support Extreme - Expect market consolidation Between \$170.2 and \$169.14

Analysis Charts

131 Charts

- AAPL - xxx
- ABT - xxx
- ADBE - xxx
- ADP - xxx
- AFL - xxx
- AIG - xxx
- ALL - xxx
- AMAT - xxx
- AMD - xxx
- AMZN - xxx
- AXP - xxx
- BA - xxx
- BAX - xxx
- BMY - xxx
- BSX - xxx
- BWA - xxx
- C - xxx

- CAG - xxx
- CAT - xxx
- CINF - xxx
- CLX - xxx
- CMCSA - xxx
- CME - xxx
- COF - xxx
- COP - xxx
- COST - xxx
- CPB - xxx
- CSCO - xxx
- CSX - xxx
- CTXS - xxx
- CVS - xxx
- CVX - xxx
- DE - xxx
- DHI - xxx
- DIS - xxx
- DOV - xxx
- DRI - xxx

- DTE - xxx
- DUK - xxx
- EBAY - xxx
- ED - xxx
- EFX - xxx
- EMN - xxx
- EMR - xxx
- ETN - xxx
- EW - xxx
- EXC - xxx
- F - xxx
- FAST - xxx
- FDX - xxx
- FITB - xxx
- FL - xxx
- FOX - xxx
- GD - xxx
- GE - xxx
- GILD - xxx
- GIS - xxx

- **GLW - xxx**
- **GS - xxx**
- **GT - xxx**
- **HD - xxx**
- **HES - xxx**
- **HOG - xxx**
- **HON - xxx**
- **HPQ - xxx**
- **HRB - xxx**
- **HUM - xxx**
- **INTC - xxx**
- **INTU - xxx**
- **IR - xxx**
- **ITW - xxx**
- **JBHT - xxx**
- **JCI - xxx**
- **JNJ - xxx**
- **JPM - xxx**
- **JWN - xxx**
- **KMB - xxx**

- KO - xxx
- KR - xxx
- KSS - xxx
- L - xxx
- LMT - xxx
- LOW - xxx
- MCD - xxx
- MGM - xxx
- MMM - xxx
- MO - xxx
- MRK - xxx
- MRO - xxx
- MSFT - xxx
- MSI - xxx
- NEM - xxx
- NKE - xxx
- NSC - xxx
- NUE - xxx
- ORCL - xxx
- OXY - xxx

- PEP - xxx
- PFE - xxx
- PG - xxx
- PNC - xxx
- PPG - xxx
- RJF - xxx
- ROST - xxx
- SLB - xxx
- STZ - xxx
- SWK - xxx
- SYU - xxx
- T - xxx
- TGT - xxx
- TROW - xxx
- TRV - xxx
- TSN - xxx
- UNH - xxx
- UPS - xxx
- USB - xxx
- VLO - xxx

- VZ - xxx
- WDC - xxx
- WEC - xxx
- WFC - xxx
- WHR - xxx
- WMB - xxx
- WMT - xxx
- WY - xxx
- WYNN - xxx
- XEL - xxx
- XLNX - xxx
- XOM - xxx
- XRX - xxx
- YUM - xxx

xxx - Analysis Chart



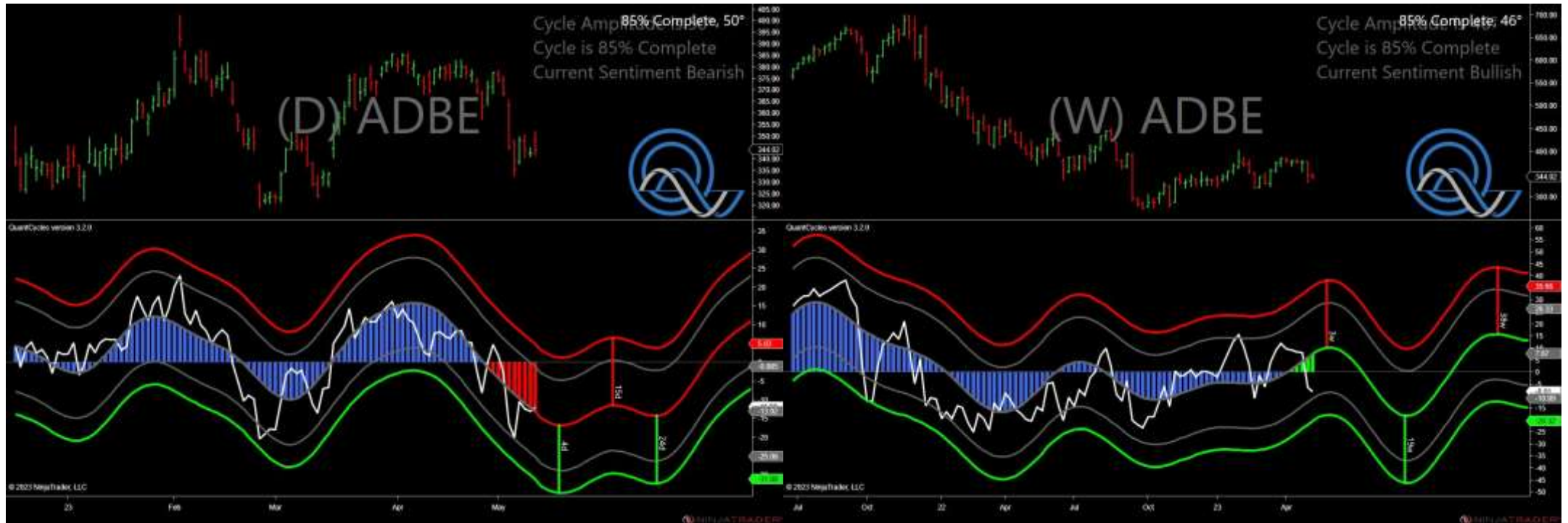
- Amplitude is 41° - Strong
- Direction Accuracy is 50%
- Market is at Support Extreme - Expect market consolidation Between \$173.02 and \$171.9

xxx - Analysis Chart



- Amplitude is 28° - Good
- Direction Accuracy is 39.9%
- Market is at Resistance Extreme - Expect market consolidation Between \$110.97 and \$110.9

xxx - Analysis Chart



- Amplitude is 50° - Strong
- Direction Accuracy is 88.1%
- Market is at Resistance Extreme - Expect market consolidation Between \$352 and \$348.25

xxx - Analysis Chart



- Amplitude is 18° - Weak
- Direction Accuracy is 67.3%
- Market is at Support Extreme - Expect market consolidation Between \$74.64 and \$74.41

xxx - Analysis Chart



- Amplitude is 26° - Good
- Direction Accuracy is 72.9%
- Market is at Support Extreme - Expect market consolidation Between \$215.01 and \$212.06

xxx - Analysis Chart



- Amplitude is 7° - Weak
- Direction Accuracy is 61.4%
- Market is at Resistance Extreme - Expect market consolidation Between \$67.79 and \$67.57

xxx - Analysis Chart



- Amplitude is 40° - Good
- Direction Accuracy is 88.8%
- Market is at Support Extreme - Expect market consolidation Between \$52.61 and \$52.44

xxx - Analysis Chart



- Amplitude is 50° - Strong
- Direction Accuracy is 58.6%
- Market is at Support Extreme - Expect market consolidation Between \$117.67 and \$116.48

xxx - Analysis Chart



- Amplitude is 10° - Weak
- Direction Accuracy is 86.8%
- Market is at Resistance Extreme - Expect market consolidation Between \$116.24 and \$115.52

xxx - Analysis Chart



- Amplitude is 43° - Strong
- Direction Accuracy is 73%
- Market is at Support Extreme - Expect market consolidation Between \$96.42 and \$96.12

xxx - Analysis Chart



- Amplitude is 7° - Weak
- Direction Accuracy is 59.8%
- Market is at Resistance Extreme - Expect market consolidation Between \$235 and \$234.89

xxx - Analysis Chart



- Amplitude is 1° - Weak
- Direction Accuracy is 83.1%
- Market is at Support Extreme - Expect market consolidation Between \$108.1 and \$108.05

xxx - Analysis Chart



- Amplitude is 38° - Good
- Direction Accuracy is 80.3%
- Market is at Support Extreme - Expect market consolidation Between \$148.68 and \$147.95

xxx - Analysis Chart



- Amplitude is 24° - Good
- Direction Accuracy is 93.5%
- Market is at Support Extreme - Expect market consolidation Between \$200.84 and \$198.25

xxx - Analysis Chart



- Amplitude is 55° - Strong
- Direction Accuracy is 55.2%
- Market is at Support Extreme - Expect market consolidation Between \$27.32 and \$27.02

xxx - Analysis Chart



- Amplitude is 62° - Strong
- Direction Accuracy is 59.9%
- Market is at Resistance Extreme - Expect market consolidation Between \$44.18 and \$43.84

xxx - Analysis Chart



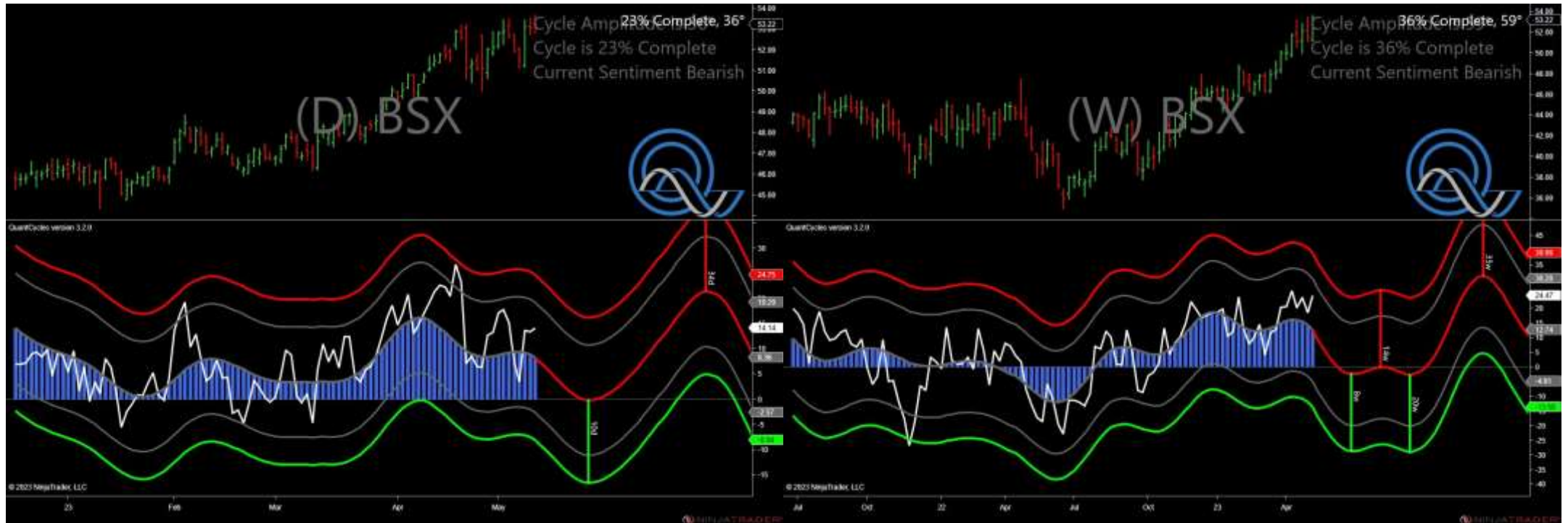
- Amplitude is 18° - Weak
- Direction Accuracy is 84.1%
- Market is at Resistance Extreme - Expect market consolidation Between \$42.09 and \$41.9

xxx - Analysis Chart



- Amplitude is 25° - Good
- Direction Accuracy is 92.4%
- Market is at Support Extreme - Expect market consolidation Between \$68.17 and \$67.56

xxx - Analysis Chart



- Amplitude is 36° - Good
- Direction Accuracy is 81.2%
- Market is at Resistance Extreme - Expect market consolidation Between \$53.67 and \$53.34

xxx - Analysis Chart



- Amplitude is 23° - Good
- Direction Accuracy is 40.8%
- Market is at Support Extreme - Expect market consolidation Between \$44.31 and \$44

xxx - Analysis Chart



- Amplitude is 40° - Good
- Direction Accuracy is 44.2%
- Market is at Support Extreme - Expect market consolidation Between \$46.37 and \$45.59

xxx - Analysis Chart



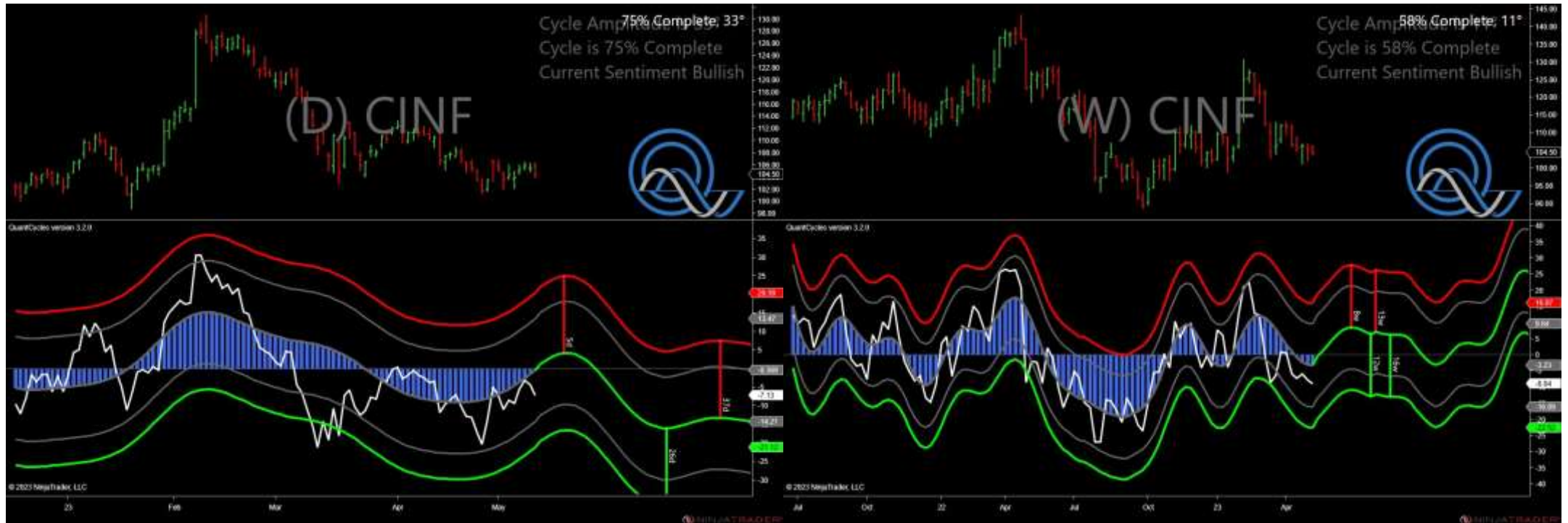
- Amplitude is 31° - Good
- Direction Accuracy is 61.1%
- Market is at Resistance Extreme - Expect market consolidation Between \$37.93 and \$37.84

xxx - Analysis Chart



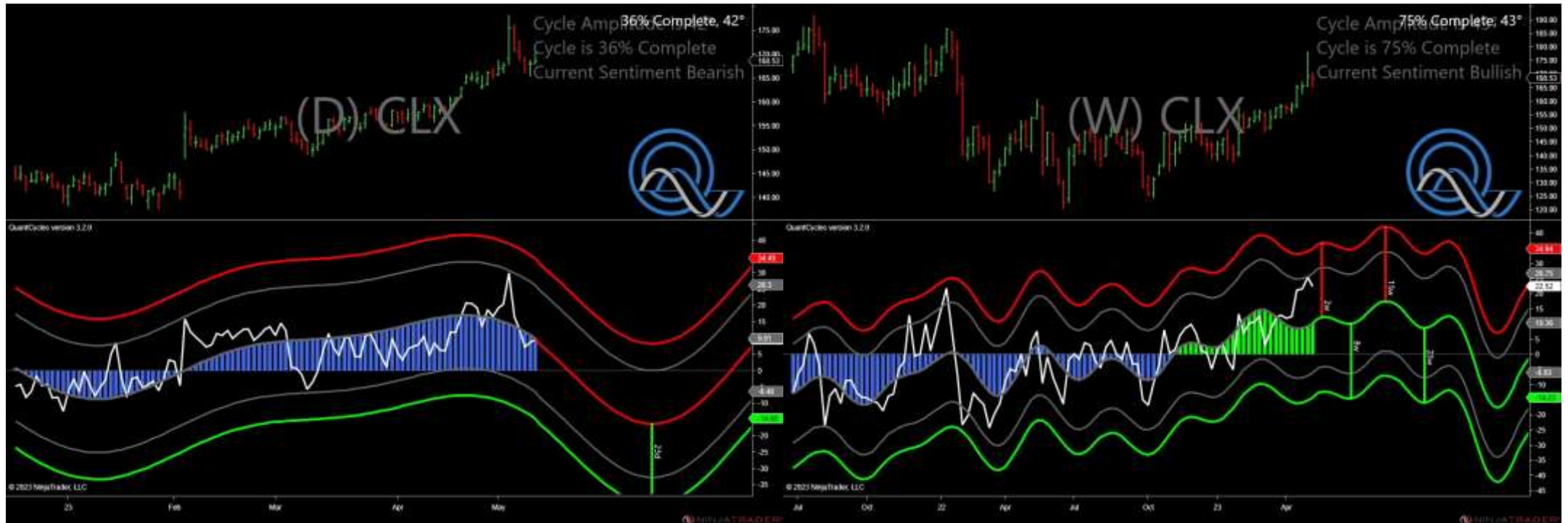
- Amplitude is 17° - Weak
- Direction Accuracy is 84.2%
- Market is at Support Extreme - Expect market consolidation Between \$213.17 and \$210.19

xxx - Analysis Chart



- Amplitude is 33° - Good
- Direction Accuracy is 50.7%
- Market is at Support Extreme - Expect market consolidation Between \$104.5 and \$103.9

xxx - Analysis Chart



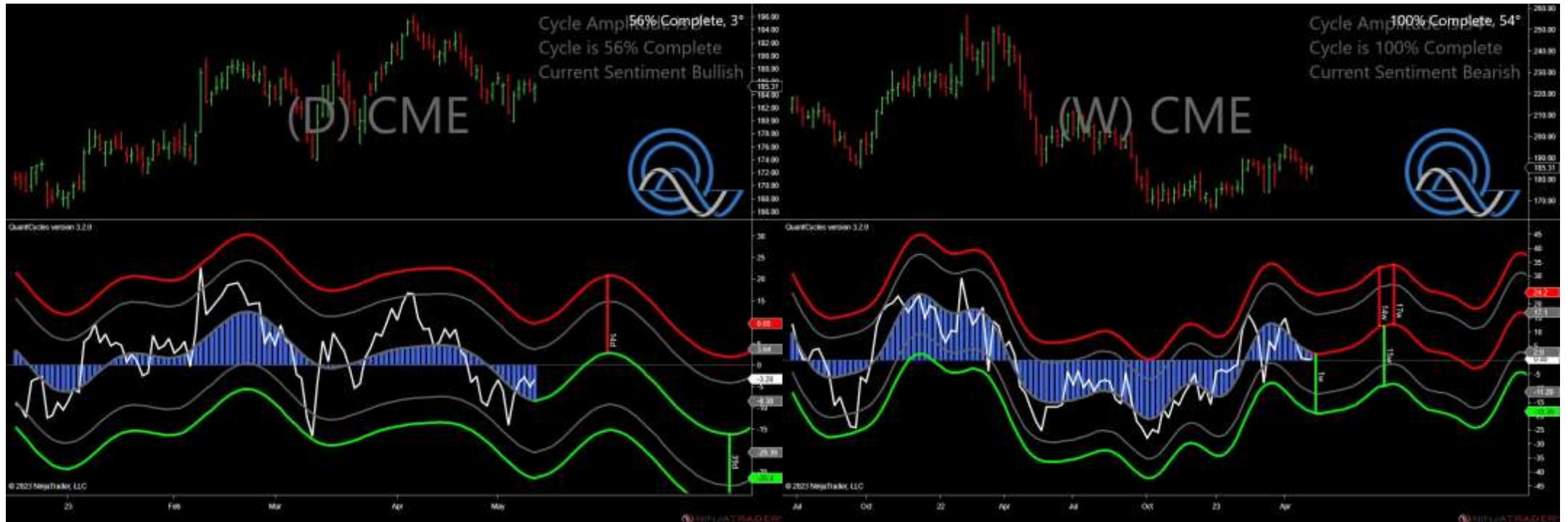
- Amplitude is 42° - Strong
- Direction Accuracy is 87%
- Market is at Resistance Extreme - Expect market consolidation Between \$170.44 and \$168.53

xxx - Analysis Chart



- Amplitude is 34° - Good
- Direction Accuracy is 65.6%
- Market is at Resistance Extreme - Expect market consolidation Between \$39.93 and \$39.93

xxx - Analysis Chart



- Amplitude is 3° - Weak
- Direction Accuracy is 51.7%
- Market is at Support Extreme - Expect market consolidation Between \$184.87 and \$182.96

xxx - Analysis Chart



- Amplitude is 26° - Good
- Direction Accuracy is 55%
- Market is at Support Extreme - Expect market consolidation Between \$215.55 and \$213.96

xxx - Analysis Chart



- Amplitude is 12° - Weak
- Direction Accuracy is 36%
- Market is at Support Extreme - Expect market consolidation Between \$87.04 and \$86.08

xxx - Analysis Chart



- Amplitude is 18° - Weak
- Direction Accuracy is 79.1%
- Market is at Resistance Extreme - Expect market consolidation Between \$102.26 and \$101.99

xxx - Analysis Chart



- Amplitude is 14° - Weak
- Direction Accuracy is 90%
- Market is at Resistance Extreme - Expect market consolidation Between \$504.97 and \$501.95

xxx - Analysis Chart



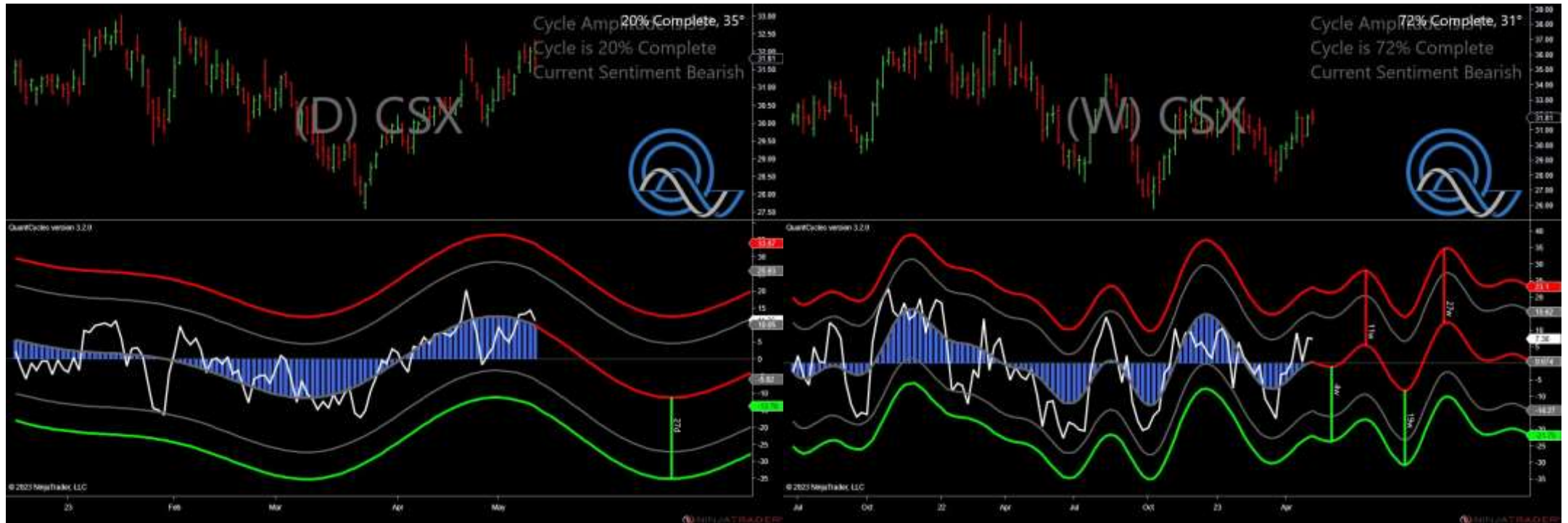
- Amplitude is 27° - Good
- Direction Accuracy is 95.2%
- Market is at Resistance Extreme - Expect market consolidation Between \$54.8 and \$54.53

xxx - Analysis Chart



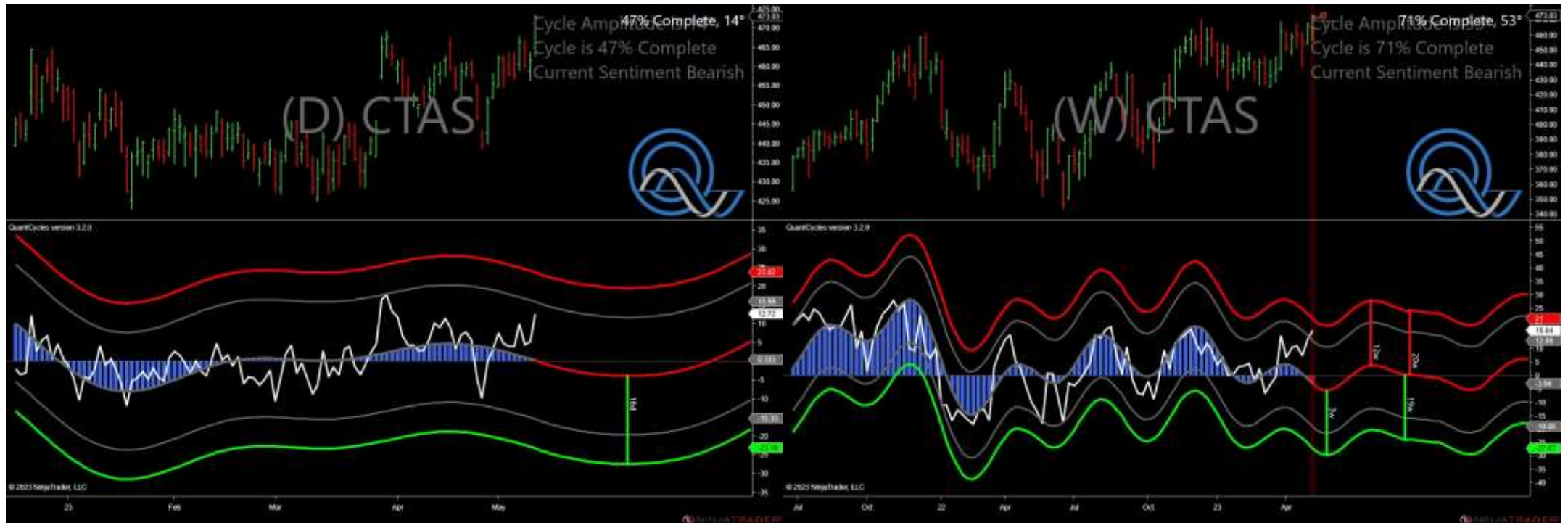
- Amplitude is 51° - Strong
- Direction Accuracy is 69.2%
- Market is at Support Extreme - Expect market consolidation Between \$46.7 and \$46.15

xxx - Analysis Chart



- Amplitude is 35° - Good
- Direction Accuracy is 85.2%
- Market is at Resistance Extreme - Expect market consolidation Between \$32.33 and \$32.25

xxx - Analysis Chart



- Amplitude is 14° - Weak
- Direction Accuracy is 91.2%
- Market is at Resistance Extreme - Expect market consolidation Between \$473.37 and \$473.03

xxx - Analysis Chart



- Amplitude is 13° - Weak
- Direction Accuracy is 87.9%
- Market is at Resistance Extreme - Expect market consolidation Between \$103.96 and \$103.91

xxx - Analysis Chart



- Amplitude is 41° - Strong
- Direction Accuracy is 72%
- Market is at Support Extreme - Expect market consolidation Between \$69.71 and \$69.39

xxx - Analysis Chart



- Amplitude is 8° - Weak
- Direction Accuracy is 90.5%
- Market is at Resistance Extreme - Expect market consolidation Between \$160.44 and \$160.44

xxx - Analysis Chart



- Amplitude is 11° - Weak
- Direction Accuracy is 80.3%
- Market is at Support Extreme - Expect market consolidation Between \$380.39 and \$376.16

xxx - Analysis Chart



- Amplitude is 21° - Good
- Direction Accuracy is 85.4%
- Market is at Support Extreme - Expect market consolidation Between \$108.77 and \$107.87

xxx - Analysis Chart



- Amplitude is 40° - Good
- Direction Accuracy is 71.3%
- Market is at Resistance Extreme - Expect market consolidation Between \$103.25 and \$103

xxx - Analysis Chart



- Amplitude is 20° - Weak
- Direction Accuracy is 88.4%
- Market is at Resistance Extreme - Expect market consolidation Between \$144.58 and \$143.39

xxx - Analysis Chart



- Amplitude is 19° - Weak
- Direction Accuracy is 38.5%
- Market is at Support Extreme - Expect market consolidation Between \$149.06 and \$147.82

xxx - Analysis Chart



- Amplitude is 25° - Good
- Direction Accuracy is 75.3%
- Market is at Support Extreme - Expect market consolidation Between \$113.97 and \$112.71

xxx - Analysis Chart



- Amplitude is 20° - Weak
- Direction Accuracy is 70.9%
- Market is at Resistance Extreme - Expect market consolidation Between \$99.5 and \$99.14

xxx - Analysis Chart



- Amplitude is 21° - Good
- Direction Accuracy is 76.2%
- Market is at Support Extreme - Expect market consolidation Between \$45.82 and \$45.24

xxx - Analysis Chart



- Amplitude is 4° - Weak
- Direction Accuracy is 83.5%
- Market is at Resistance Extreme - Expect market consolidation Between \$99.99 and \$99.41

xxx - Analysis Chart



- Amplitude is 37° - Good
- Direction Accuracy is 85.7%
- Market is at Support Extreme - Expect market consolidation Between \$202.06 and \$199.87

xxx - Analysis Chart



- Amplitude is 31° - Good
- Direction Accuracy is 89.7%
- Market is at Resistance Extreme - Expect market consolidation Between \$81.48 and \$81.18

xxx - Analysis Chart



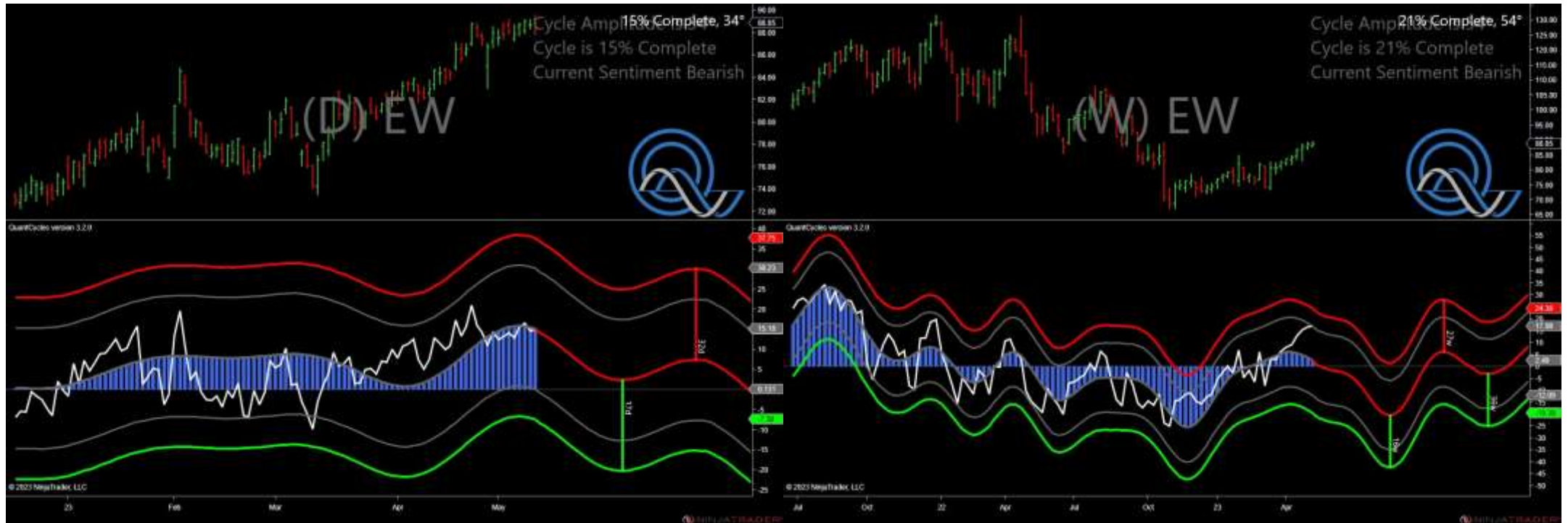
- Amplitude is 18° - Weak
- Direction Accuracy is 42.7%
- Market is at Support Extreme - Expect market consolidation Between \$82.48 and \$81.7

xxx - Analysis Chart



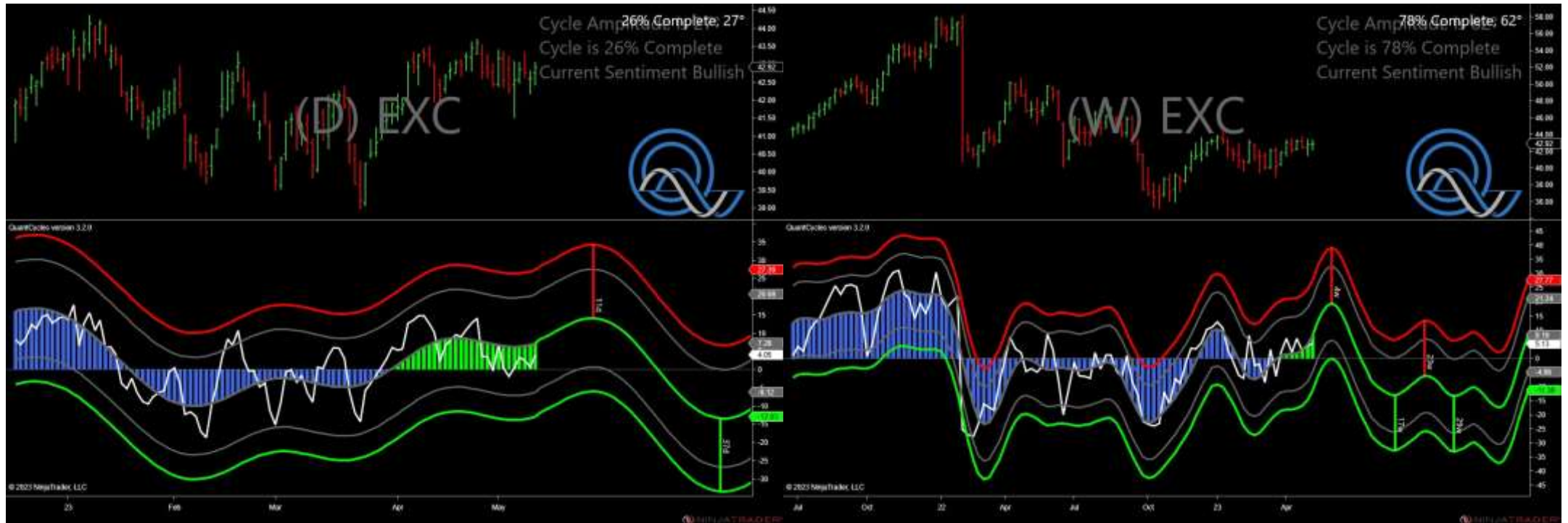
- Amplitude is 26° - Good
- Direction Accuracy is 80.5%
- Market is at Support Extreme - Expect market consolidation Between \$169.11 and \$167.25

xxx - Analysis Chart



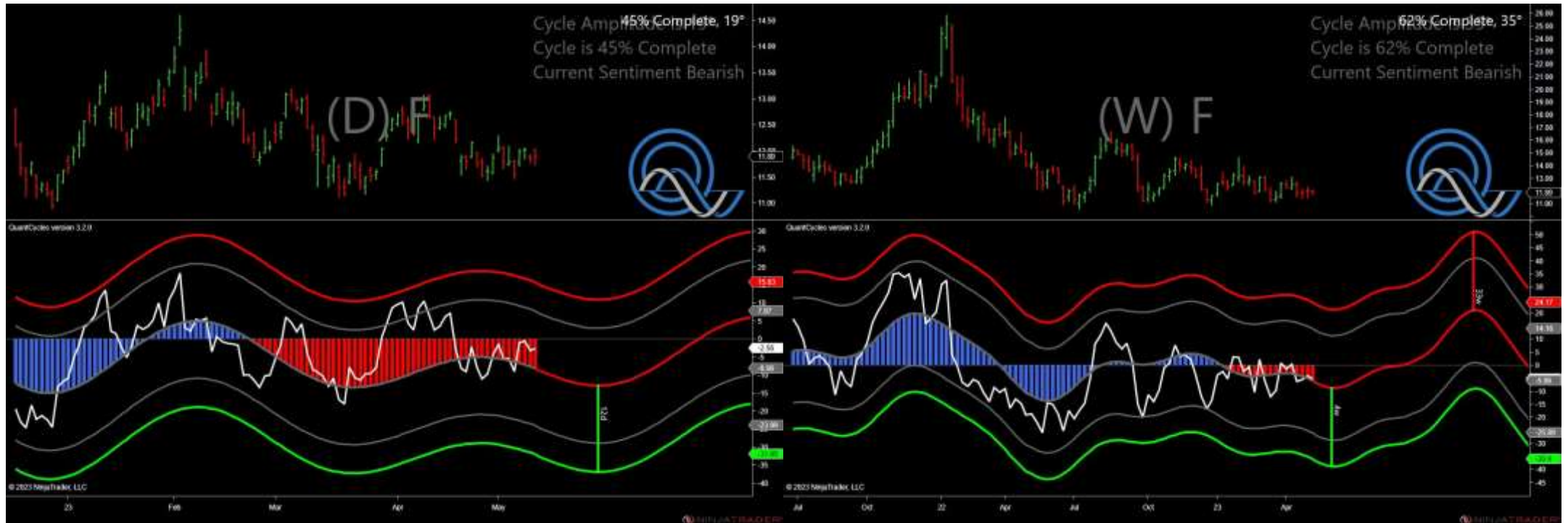
- Amplitude is 34° - Good
- Direction Accuracy is 54%
- Market is at Resistance Extreme - Expect market consolidation Between \$89.58 and \$89.22

xxx - Analysis Chart



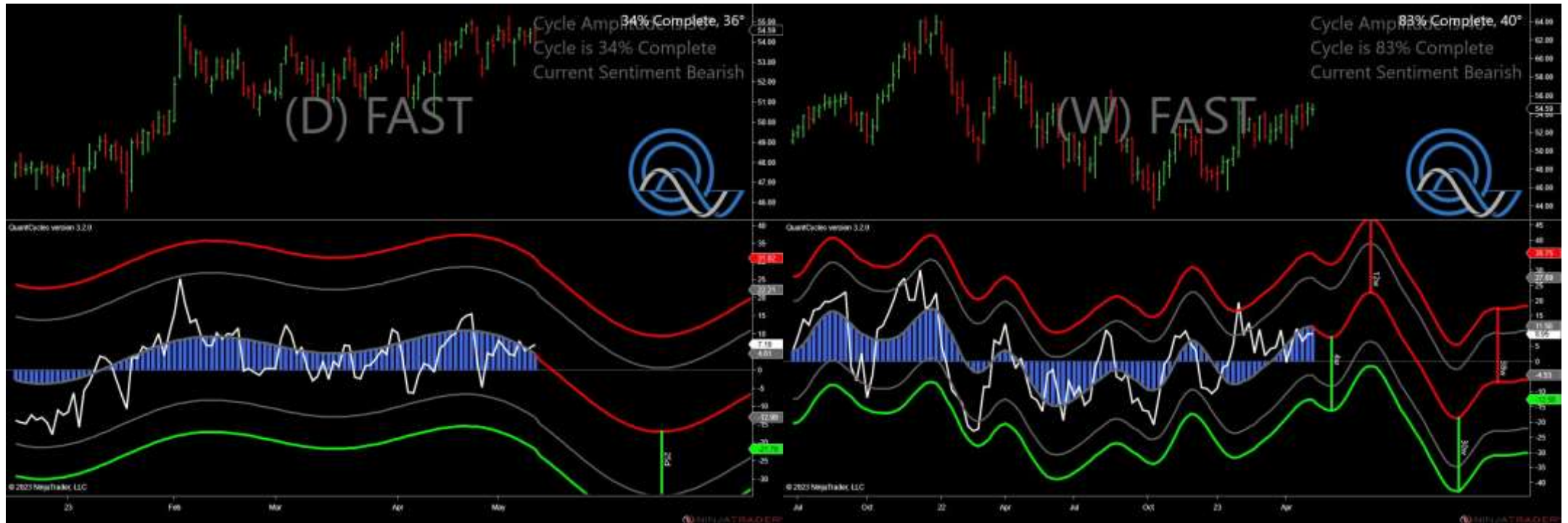
- Amplitude is 27° - Good
- Direction Accuracy is 64.7%
- Market is at Support Extreme - Expect market consolidation Between \$42.76 and \$42.43

xxx - Analysis Chart



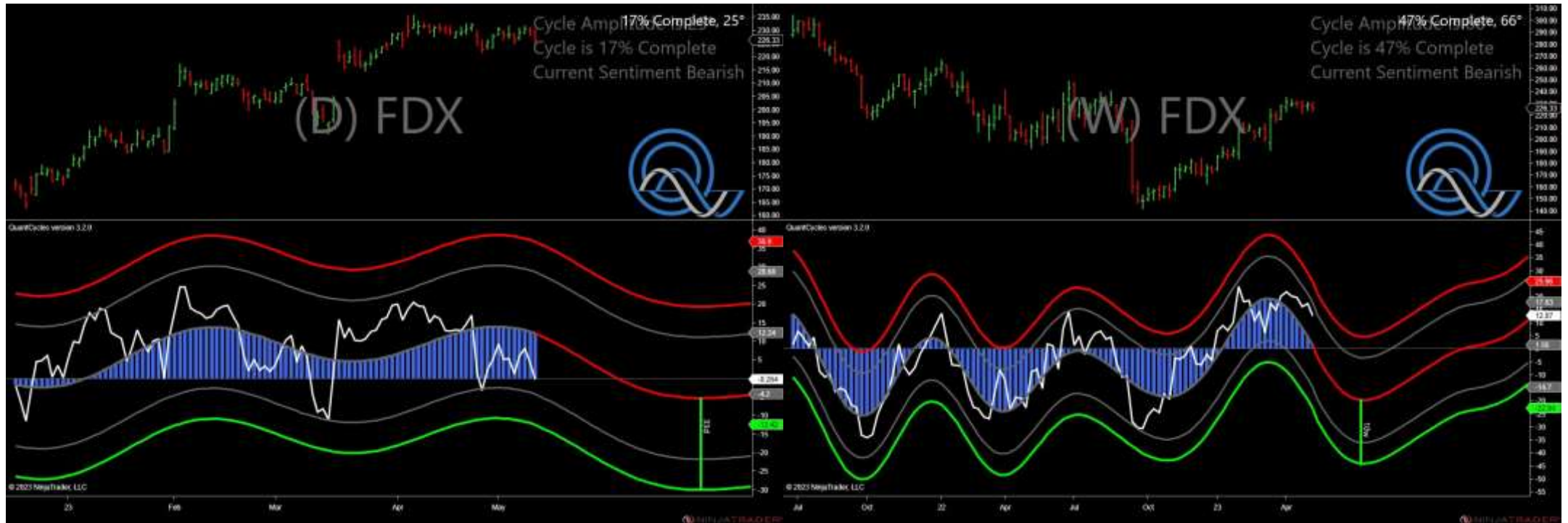
- Amplitude is 19° - Weak
- Direction Accuracy is 88.6%
- Market is at Resistance Extreme - Expect market consolidation Between \$12.04 and \$12.02

xxx - Analysis Chart



- Amplitude is 36° - Good
- Direction Accuracy is 78.7%
- Market is at Resistance Extreme - Expect market consolidation Between \$55.08 and \$54.89

xxx - Analysis Chart



- Amplitude is 25° - Good
- Direction Accuracy is 73.9%
- Market is at Resistance Extreme - Expect market consolidation Between \$230.2 and \$229.67

xxx - Analysis Chart



- Amplitude is 16° - Weak
- Direction Accuracy is 77.7%
- Market is at Resistance Extreme - Expect market consolidation Between \$25.09 and \$25.09

xxx - Analysis Chart



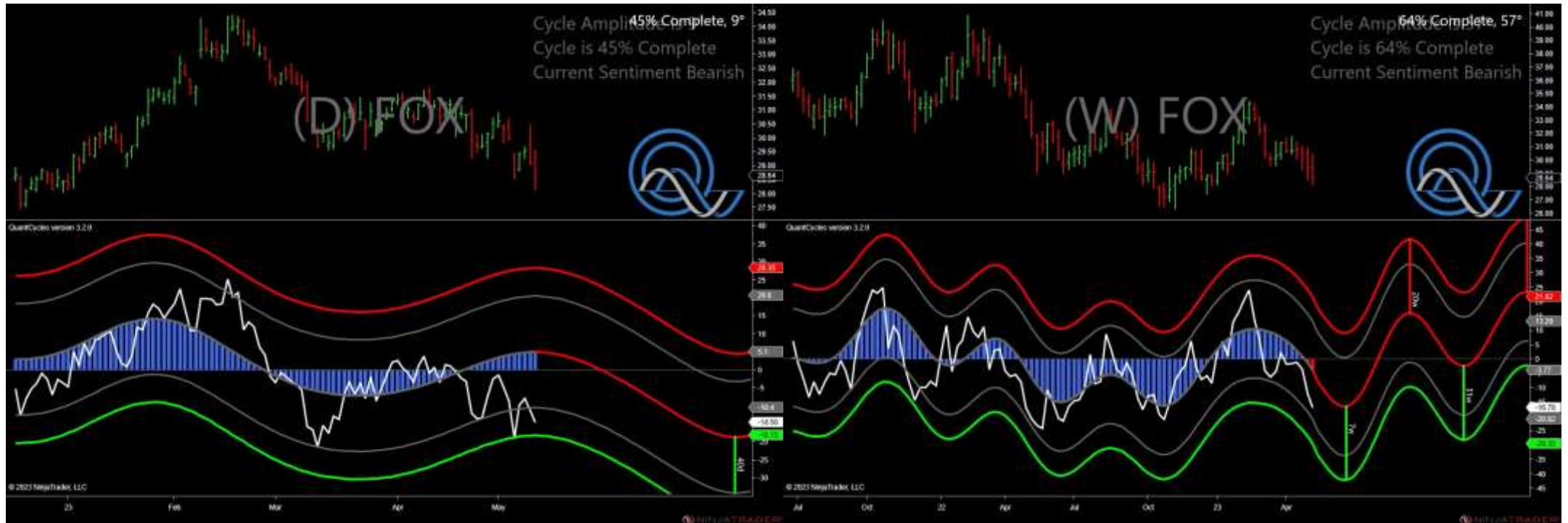
- Amplitude is 6° - Weak
- Direction Accuracy is 36.7%
- Market is at Support Extreme - Expect market consolidation Between \$38.84 and \$38.17

xxx - Analysis Chart



- Amplitude is 23° - Good
- Direction Accuracy is 85.9%
- Market is at Support Extreme - Expect market consolidation Between \$110.58 and \$108.54

xxx - Analysis Chart



- Amplitude is 9° - Weak
- Direction Accuracy is 92.8%
- Market is at Resistance Extreme - Expect market consolidation Between \$29.55 and \$29.51

xxx - Analysis Chart



- Amplitude is 9° - Weak
- Direction Accuracy is 74.5%
- Market is at Resistance Extreme - Expect market consolidation Between \$212.55 and \$212

xxx - Analysis Chart



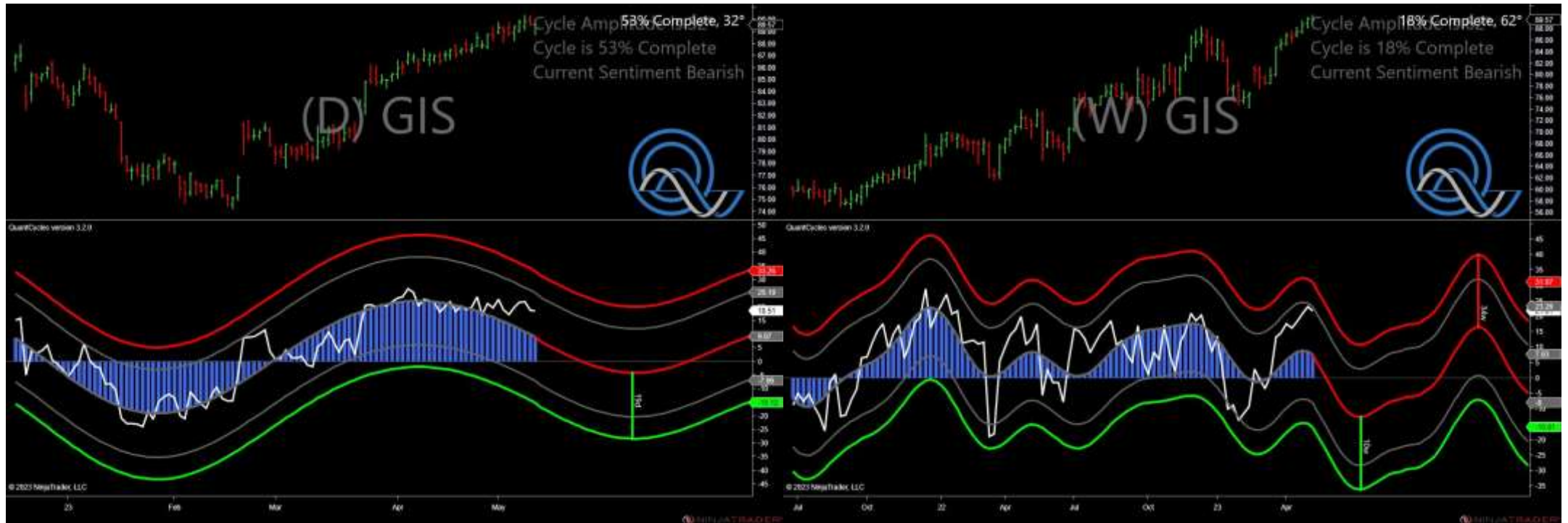
- Amplitude is 15° - Weak
- Direction Accuracy is 78.1%
- Market is at Resistance Extreme - Expect market consolidation Between \$101.67 and \$101.48

xxx - Analysis Chart



- Amplitude is 26° - Good
- Direction Accuracy is 83.7%
- Market is at Resistance Extreme - Expect market consolidation Between \$78.84 and \$78.77

xxx - Analysis Chart



- Amplitude is 32° - Good
- Direction Accuracy is 68.3%
- Market is at Resistance Extreme - Expect market consolidation Between \$89.94 and \$89.57

xxx - Analysis Chart



- Amplitude is 31° - Good
- Direction Accuracy is 85.6%
- Market is at Resistance Extreme - Expect market consolidation Between \$31.52 and \$31.44

xxx - Analysis Chart



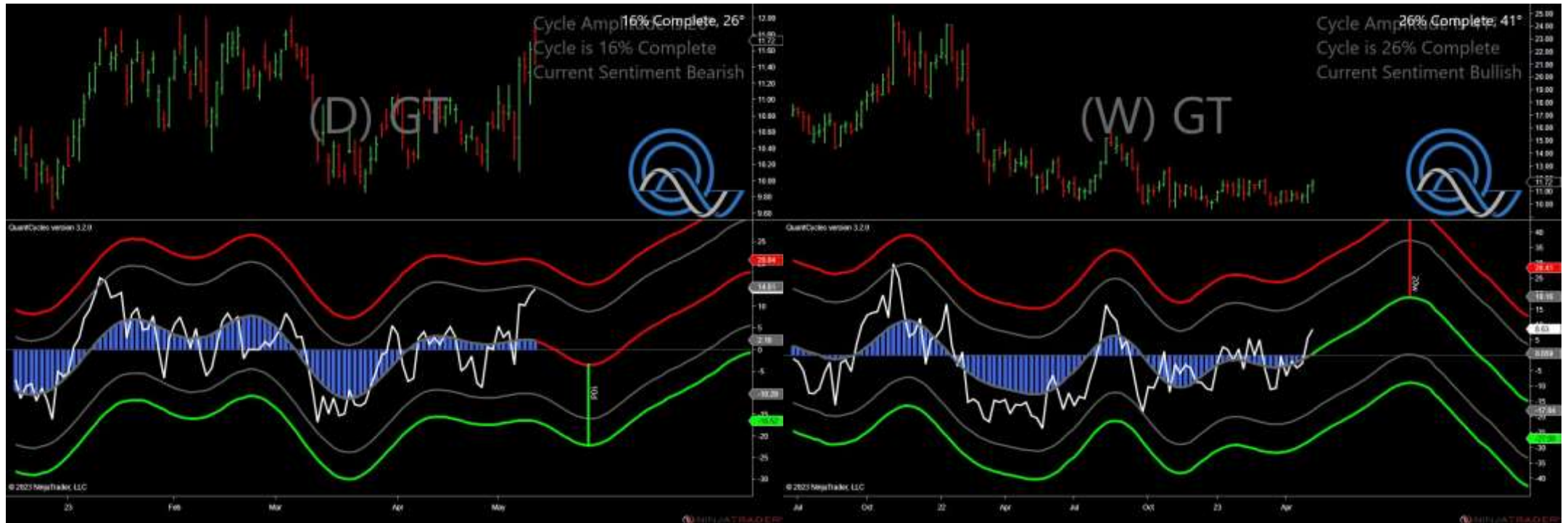
- Amplitude is 31° - Good
- Direction Accuracy is 75.5%
- Market is at Support Extreme - Expect market consolidation Between \$8.35 and \$8.16

xxx - Analysis Chart



- Amplitude is 28° - Good
- Direction Accuracy is 62.8%
- Market is at Support Extreme - Expect market consolidation Between \$322.55 and \$319.08

xxx - Analysis Chart



- Amplitude is 26° - Good
- Direction Accuracy is 68.4%
- Market is at Resistance Extreme - Expect market consolidation Between \$11.94 and \$11.85

xxx - Analysis Chart



- Amplitude is 12° - Weak
- Direction Accuracy is 84.3%
- Market is at Support Extreme - Expect market consolidation Between \$29.56 and \$29.21

xxx - Analysis Chart



- Amplitude is 56° - Strong
- Direction Accuracy is 68.3%
- Market is at Resistance Extreme - Expect market consolidation Between \$60.51 and \$60.47

xxx - Analysis Chart



- Amplitude is 12° - Weak
- Direction Accuracy is 77.8%
- Market is at Support Extreme - Expect market consolidation Between \$289.03 and \$285.92

xxx - Analysis Chart



- Amplitude is 18° - Weak
- Direction Accuracy is 71.9%
- Market is at Support Extreme - Expect market consolidation Between \$135.24 and \$132.79

xxx - Analysis Chart



- Amplitude is 33° - Good
- Direction Accuracy is 33.2%
- Market is at Support Extreme - Expect market consolidation Between \$34.18 and \$33.83

xxx - Analysis Chart



- Amplitude is 21° - Good
- Direction Accuracy is 90.6%
- Market is at Resistance Extreme - Expect market consolidation Between \$198.74 and \$197.49

xxx - Analysis Chart



- Amplitude is 10° - Weak
- Direction Accuracy is 88.8%
- Market is at Support Extreme - Expect market consolidation Between \$29.86 and \$29.5

xxx - Analysis Chart



- Amplitude is 29° - Good
- Direction Accuracy is 75.8%
- Market is at Resistance Extreme - Expect market consolidation Between \$32.04 and \$31.23

xxx - Analysis Chart



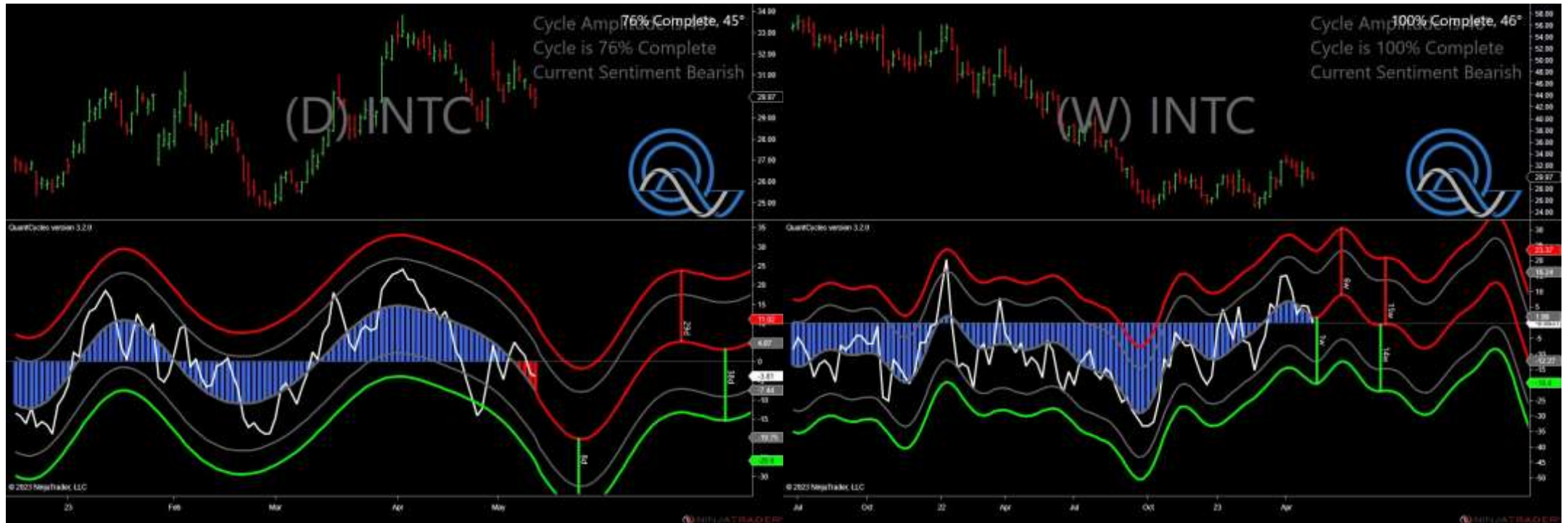
- Amplitude is 14° - Weak
- Direction Accuracy is 83.4%
- Market is at Support Extreme - Expect market consolidation Between \$529.63 and \$527.7

xxx - Analysis Chart



- Amplitude is 23° - Good
- Direction Accuracy is 64.9%
- Market is at Resistance Extreme - Expect market consolidation Between \$122.49 and \$122.02

xxx - Analysis Chart



- Amplitude is 45° - Strong
- Direction Accuracy is 72.2%
- Market is at Resistance Extreme - Expect market consolidation Between \$30.4 and \$30.29

xxx - Analysis Chart



- Amplitude is 24° - Good
- Direction Accuracy is 92.5%
- Market is at Support Extreme - Expect market consolidation Between \$431.52 and \$426.93

xxx - Analysis Chart



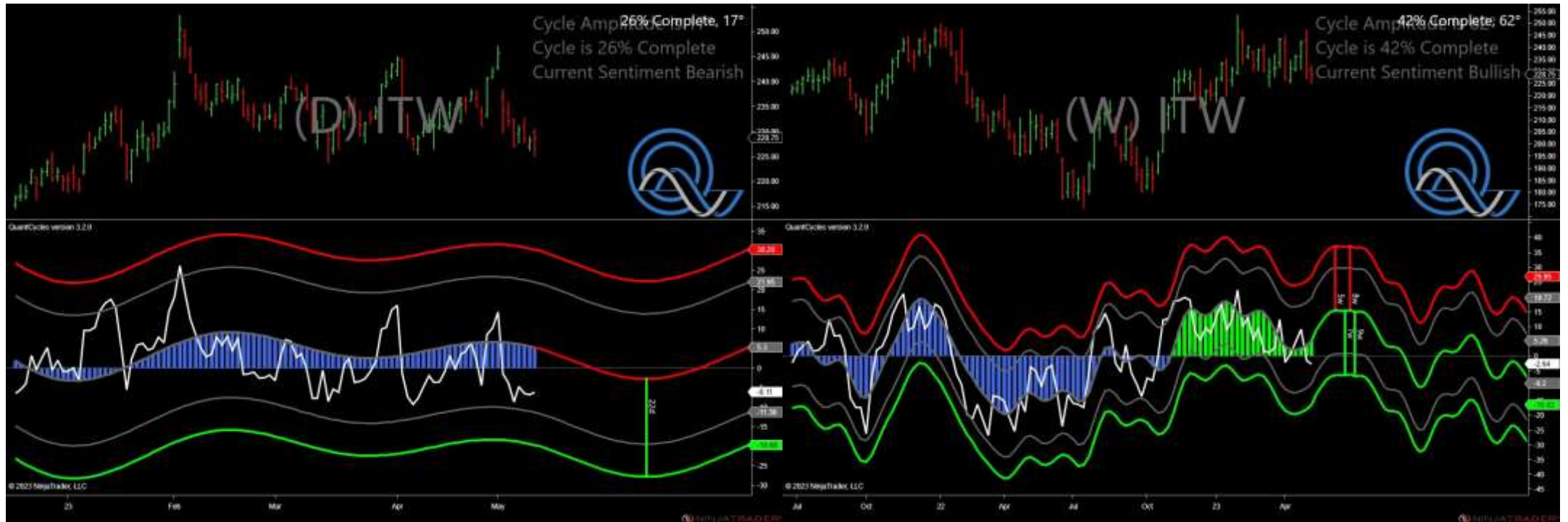
- Amplitude is 15° - Weak
- Direction Accuracy is 60.9%
- Market is at Support Extreme - Expect market consolidation Between \$31.89 and \$31.41

xxx - Analysis Chart



- Amplitude is 21° - Good
- Direction Accuracy is 68.9%
- Market is at Support Extreme - Expect market consolidation Between \$58.41 and \$57.67

xxx - Analysis Chart



- Amplitude is 17° - Weak
- Direction Accuracy is 84.3%
- Market is at Resistance Extreme - Expect market consolidation Between \$230.6 and \$229.86

xxx - Analysis Chart



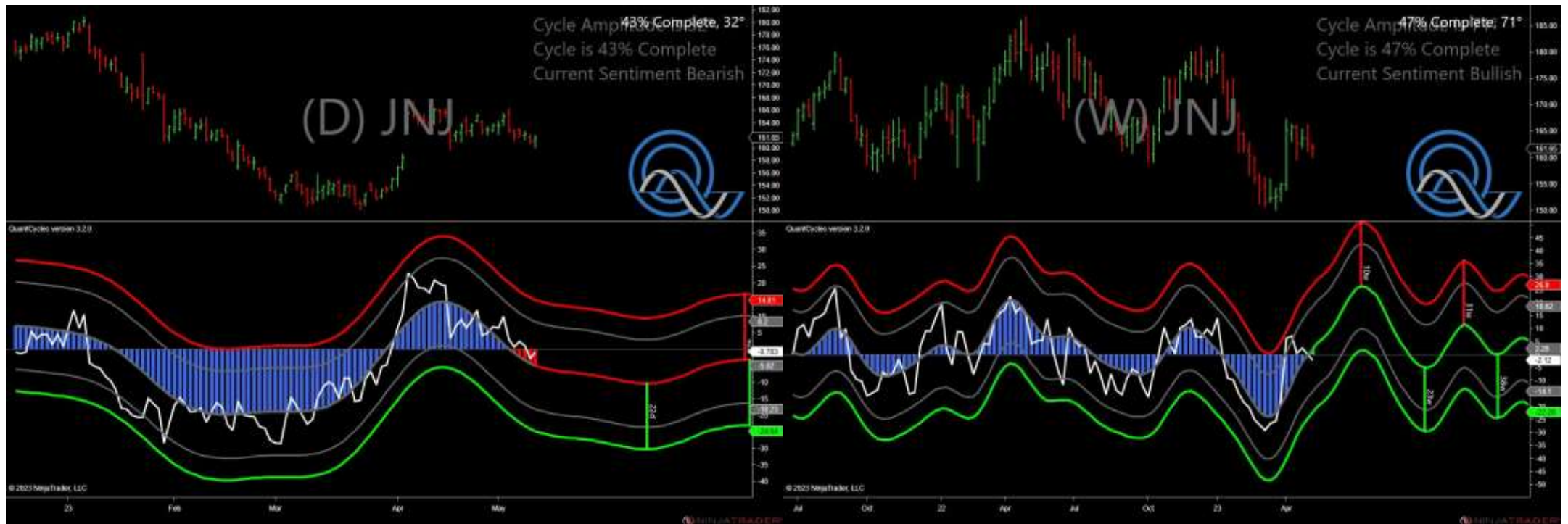
- Amplitude is 8° - Weak
- Direction Accuracy is 86.7%
- Market is at Support Extreme - Expect market consolidation Between \$176.61 and \$174.16

xxx - Analysis Chart



- Amplitude is 24° - Good
- Direction Accuracy is 45.6%
- Market is at Resistance Extreme - Expect market consolidation Between \$63.68 and \$63.38

xxx - Analysis Chart



- Amplitude is 32° - Good
- Direction Accuracy is 73.2%
- Market is at Resistance Extreme - Expect market consolidation Between \$161.97 and \$161.65

xxx - Analysis Chart



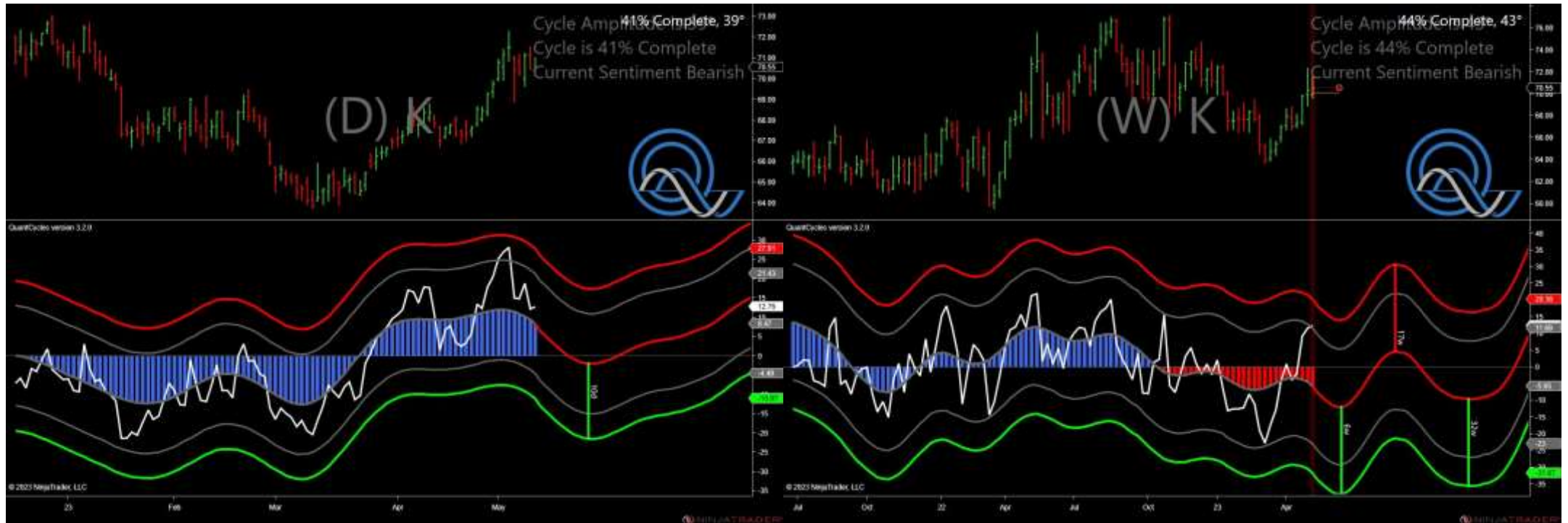
- Amplitude is 27° - Good
- Direction Accuracy is 76.4%
- Market is at Resistance Extreme - Expect market consolidation Between \$138.06 and \$137.95

xxx - Analysis Chart



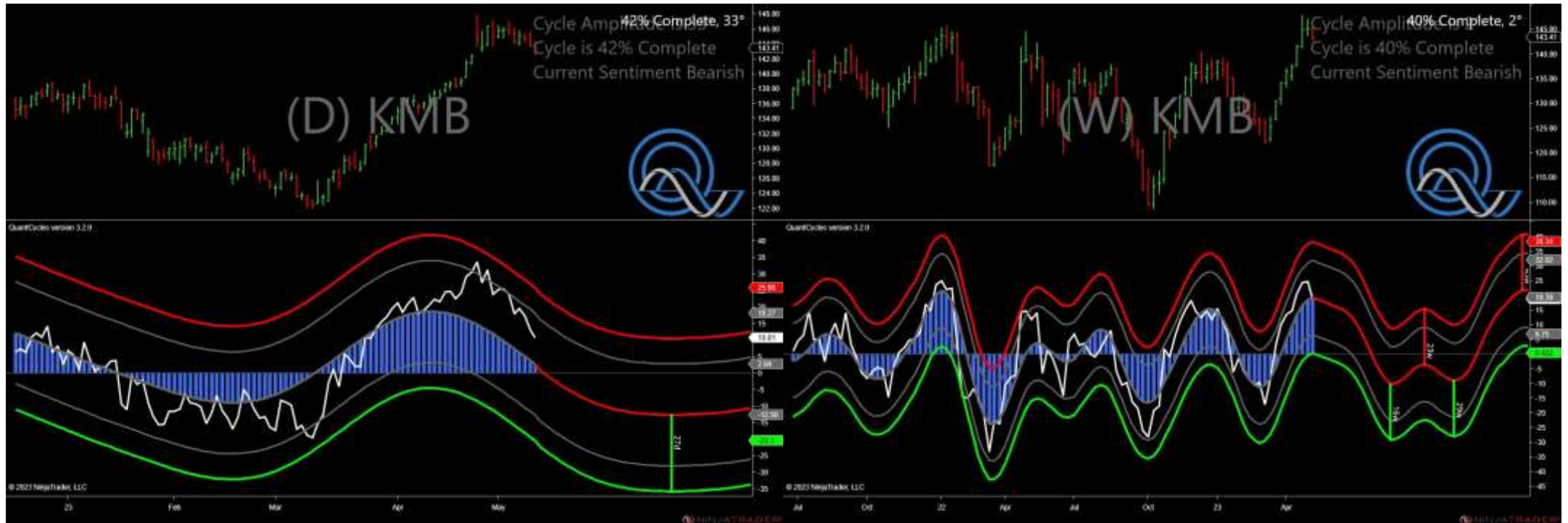
- Amplitude is 2° - Weak
- Direction Accuracy is 75.1%
- Market is at Resistance Extreme - Expect market consolidation Between \$15.32 and \$15.32

xxx - Analysis Chart



- Amplitude is 39° - Good
- Direction Accuracy is 57.6%
- Market is at Resistance Extreme - Expect market consolidation Between \$70.99 and \$70.55

xxx - Analysis Chart



- Amplitude is 33° - Good
- Direction Accuracy is 64.3%
- Market is at Resistance Extreme - Expect market consolidation Between \$144.26 and \$143.8

xxx - Analysis Chart



- Amplitude is 15° - Weak
- Direction Accuracy is 88.2%
- Market is at Support Extreme - Expect market consolidation Between \$63.32 and \$62.99

xxx - Analysis Chart



- Amplitude is 9° - Weak
- Direction Accuracy is 63.1%
- Market is at Support Extreme - Expect market consolidation Between \$49.12 and \$48.49

xxx - Analysis Chart



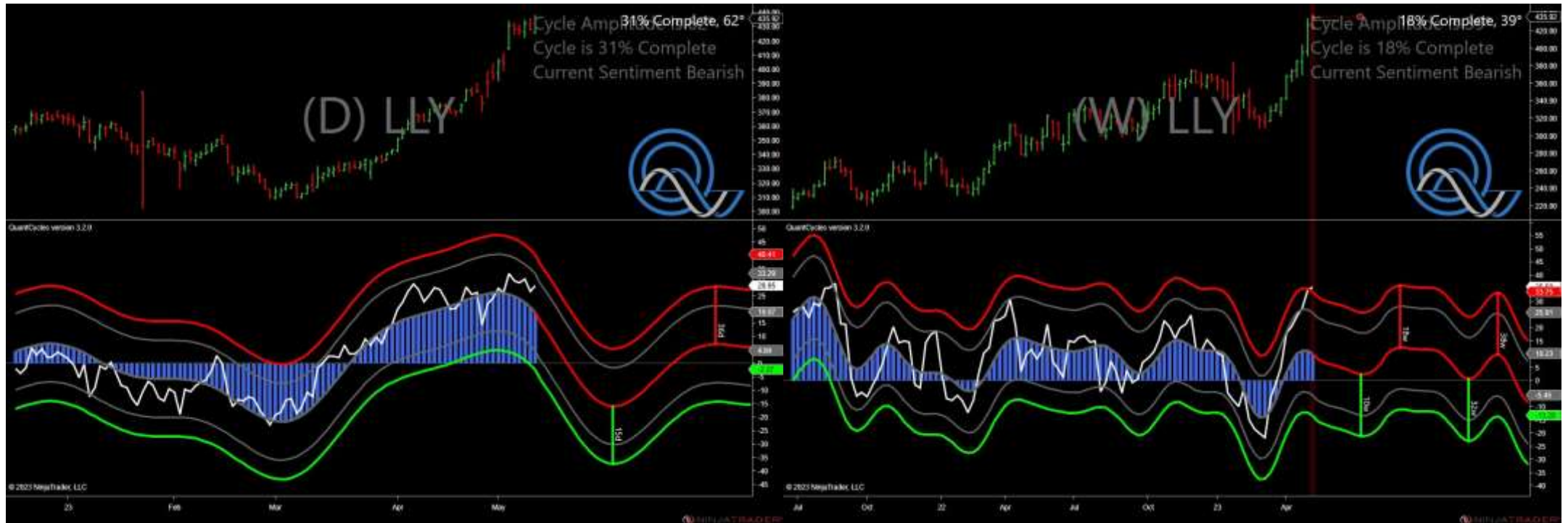
- Amplitude is 32° - Good
- Direction Accuracy is 70.4%
- Market is at Resistance Extreme - Expect market consolidation Between \$20.36 and \$20.32

xxx - Analysis Chart



- Amplitude is 33° - Good
- Direction Accuracy is 87.8%
- Market is at Support Extreme - Expect market consolidation Between \$58.49 and \$57.71

xxx - Analysis Chart



- Amplitude is 62° - Strong
- Direction Accuracy is 56.9%
- Market is at Resistance Extreme - Expect market consolidation Between \$438.39 and \$435.92

xxx - Analysis Chart



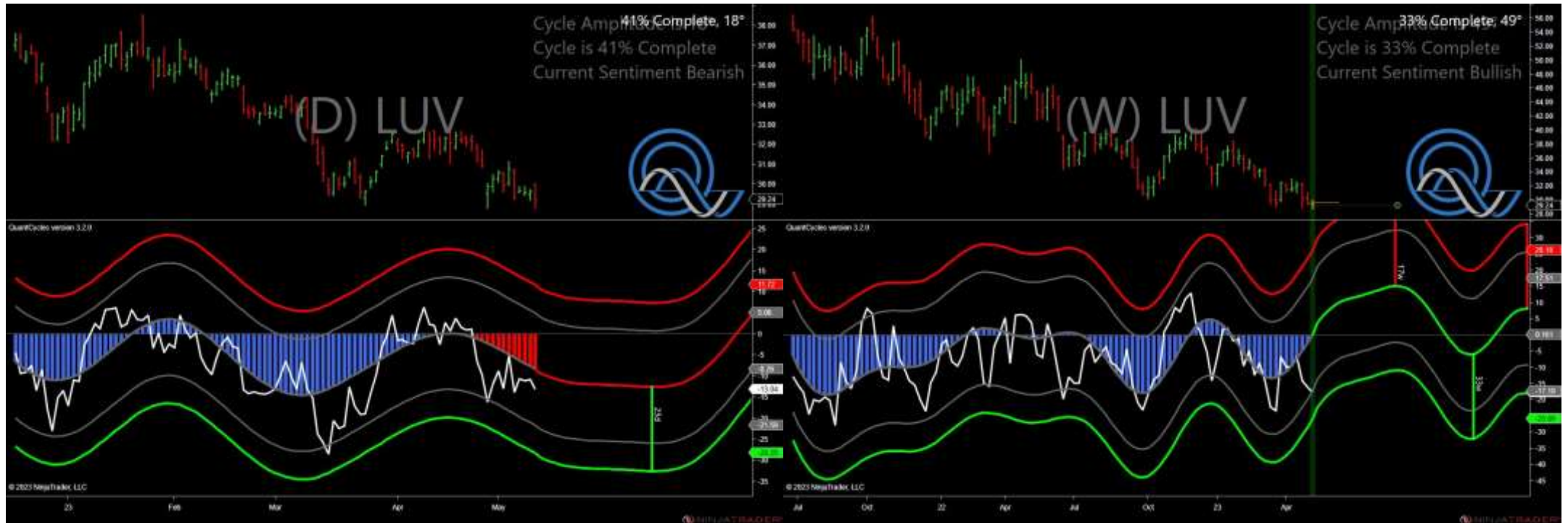
- Amplitude is 17° - Weak
- Direction Accuracy is 40.6%
- Market is at Support Extreme - Expect market consolidation Between \$452.81 and \$448.71

xxx - Analysis Chart



- Amplitude is 0° - Weak
- Direction Accuracy is 78.5%
- Market is at Support Extreme - Expect market consolidation Between \$204.32 and \$201.98

xxx - Analysis Chart



- Amplitude is 18° - Weak
- Direction Accuracy is 77.6%
- Market is at Resistance Extreme - Expect market consolidation Between \$30 and \$30

xxx - Analysis Chart



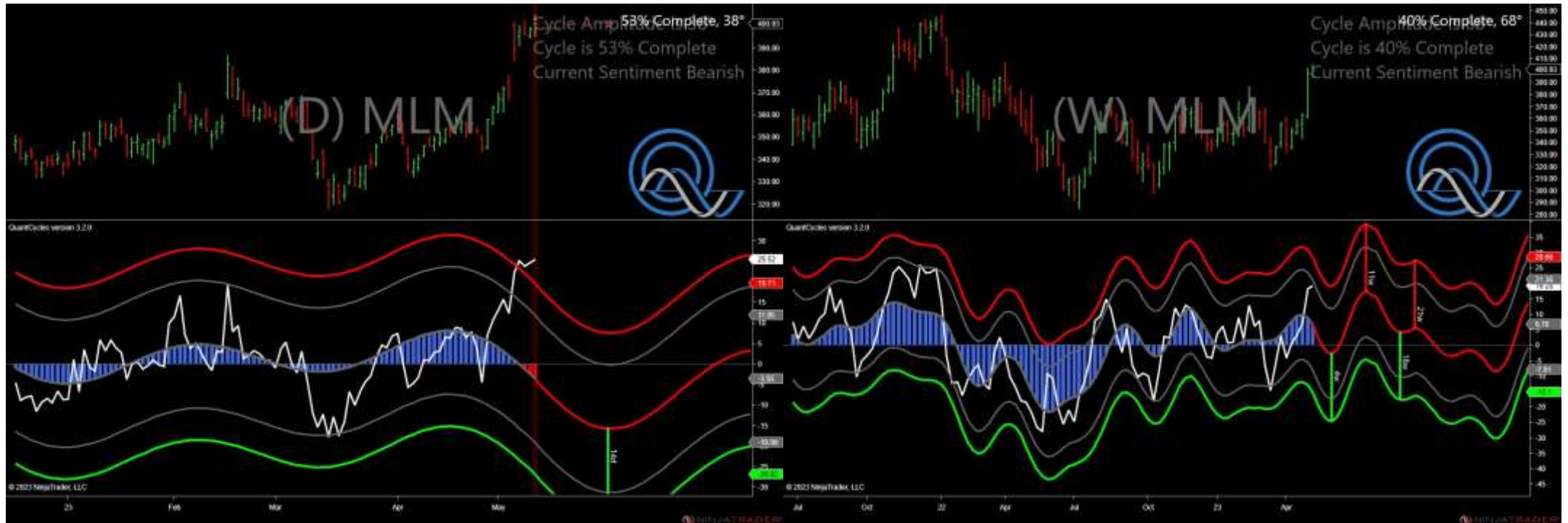
- Amplitude is 35° - Good
- Direction Accuracy is 69.1%
- Market is at Resistance Extreme - Expect market consolidation Between \$298 and \$296.57

xxx - Analysis Chart



- Amplitude is 0° - Weak
- Direction Accuracy is 90.5%
- Market is at Support Extreme - Expect market consolidation Between \$42.88 and \$41.95

xxx - Analysis Chart



- Amplitude is 38° - Good
- Direction Accuracy is 77.6%
- Market is at Resistance Extreme - Expect market consolidation Between \$404.87 and \$403.19

xxx - Analysis Chart



- Amplitude is 31° - Good
- Direction Accuracy is 69.3%
- Market is at Resistance Extreme - Expect market consolidation Between \$101.7 and \$101.39

xxx - Analysis Chart



- Amplitude is 34° - Good
- Direction Accuracy is 49.9%
- Market is at Resistance Extreme - Expect market consolidation Between \$46.46 and \$46.28

xxx - Analysis Chart



- Amplitude is 7° - Weak
- Direction Accuracy is 67.8%
- Market is at Resistance Extreme - Expect market consolidation Between \$118.17 and \$117.9

xxx - Analysis Chart



- Amplitude is 4° - Weak
- Direction Accuracy is 73.4%
- Market is at Resistance Extreme - Expect market consolidation Between \$23.21 and \$23.1

xxx - Analysis Chart



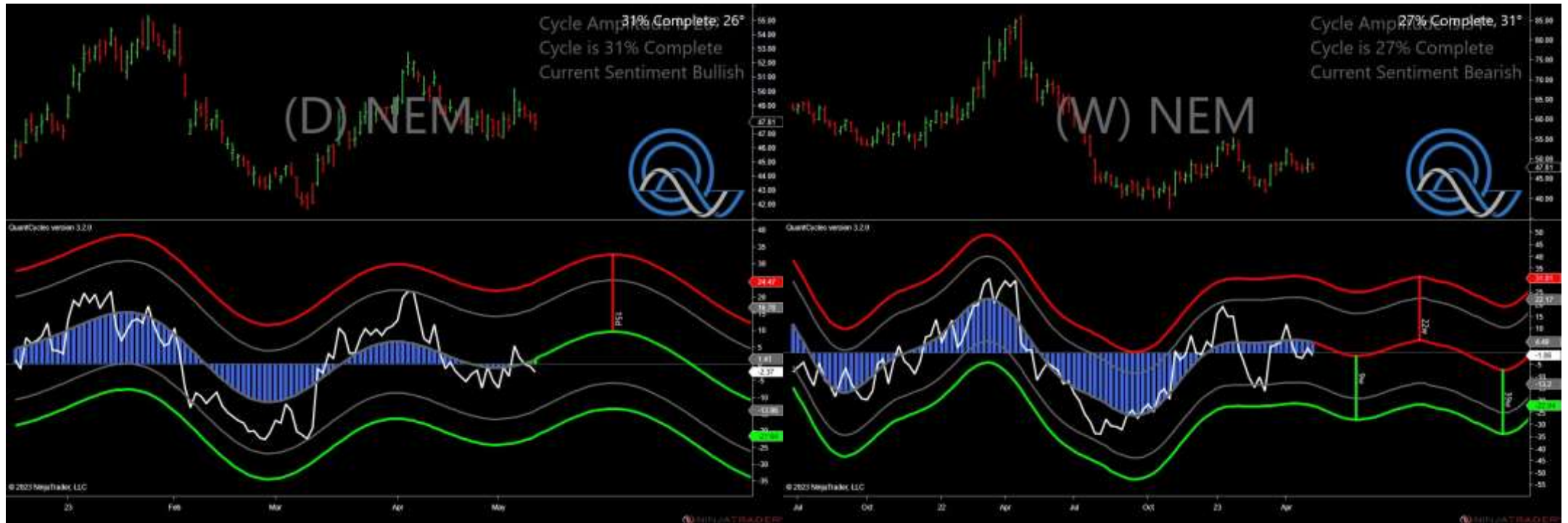
- Amplitude is 18° - Weak
- Direction Accuracy is 80%
- Market is at Support Extreme - Expect market consolidation Between \$308.62 and \$307.67

xxx - Analysis Chart



- Amplitude is 18° - Weak
- Direction Accuracy is 77.6%
- Market is at Resistance Extreme - Expect market consolidation Between \$291.36 and \$289.55

xxx - Analysis Chart



- Amplitude is 26° - Good
- Direction Accuracy is 61.9%
- Market is at Support Extreme - Expect market consolidation Between \$47.81 and \$47.27

xxx - Analysis Chart



- Amplitude is 20° - Weak
- Direction Accuracy is 74%
- Market is at Resistance Extreme - Expect market consolidation Between \$126.46 and \$126.29

xxx - Analysis Chart



- Amplitude is 27° - Good
- Direction Accuracy is 96.2%
- Market is at Support Extreme - Expect market consolidation Between \$208.5 and \$206.01

xxx - Analysis Chart



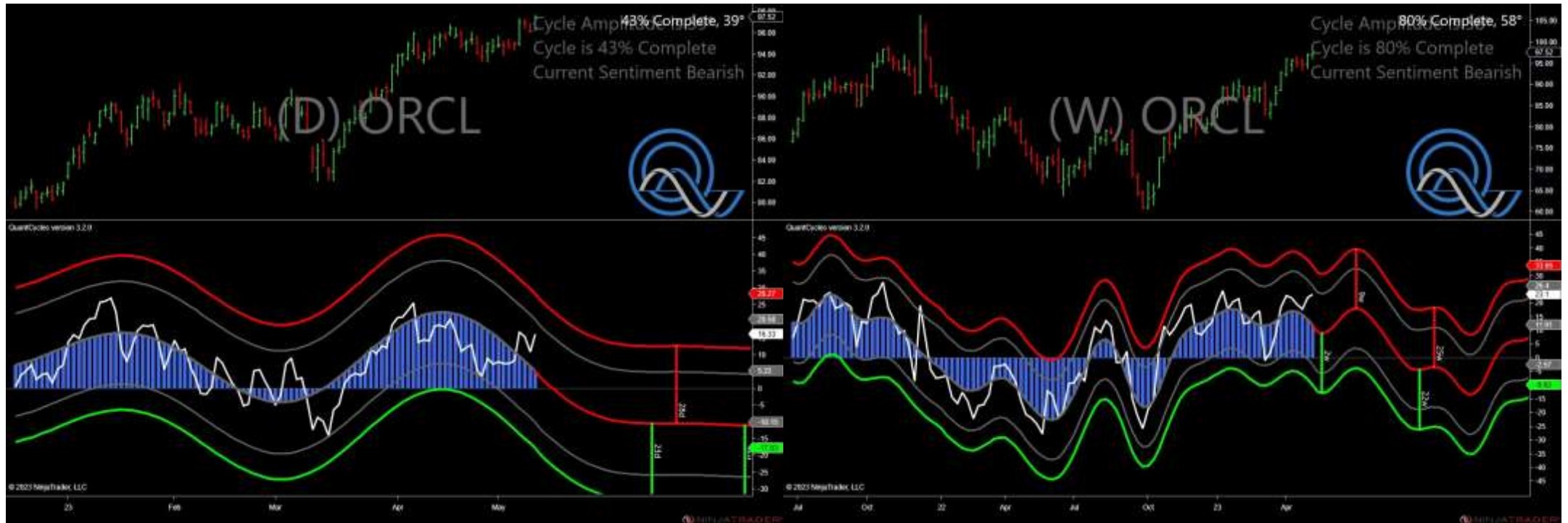
- Amplitude is 58° - Strong
- Direction Accuracy is 71%
- Market is at Support Extreme - Expect market consolidation Between \$71.41 and \$71.09

xxx - Analysis Chart



- Amplitude is 18° - Weak
- Direction Accuracy is 56.9%
- Market is at Support Extreme - Expect market consolidation Between \$137.62 and \$134.72

xxx - Analysis Chart



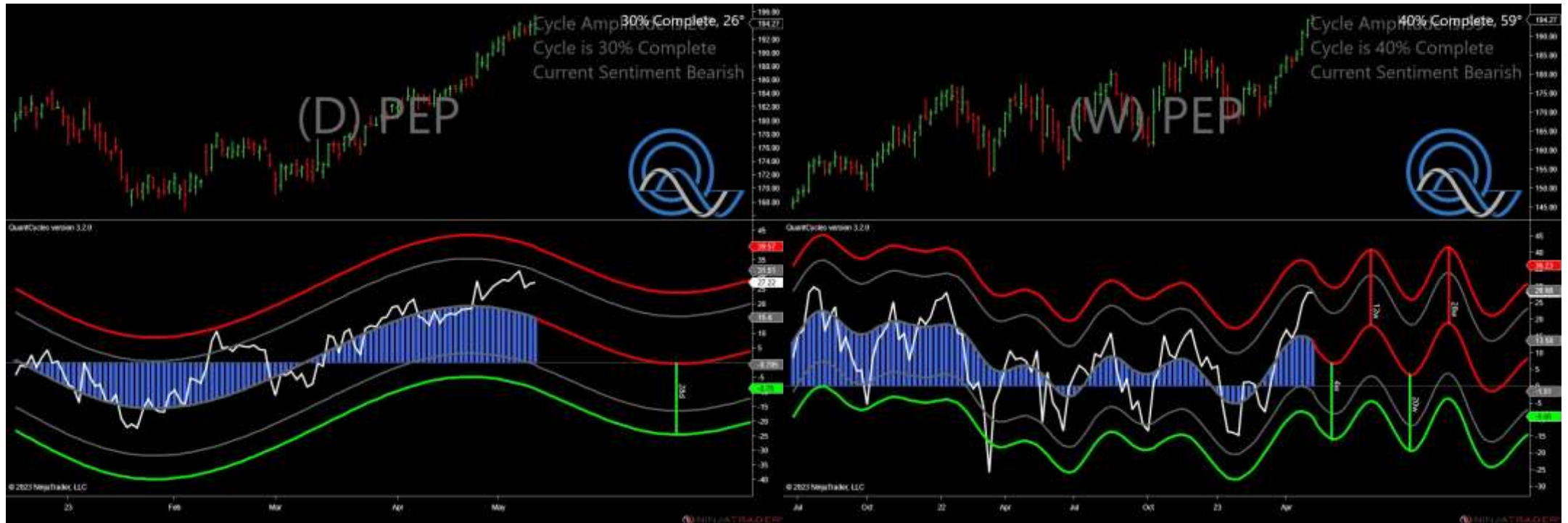
- Amplitude is 39° - Good
- Direction Accuracy is 63.1%
- Market is at Resistance Extreme - Expect market consolidation Between \$97.68 and \$97.52

xxx - Analysis Chart



- Amplitude is 31° - Good
- Direction Accuracy is 85.5%
- Market is at Support Extreme - Expect market consolidation Between \$56.85 and \$56.47

xxx - Analysis Chart



- Amplitude is 26° - Good
- Direction Accuracy is 73.7%
- Market is at Resistance Extreme - Expect market consolidation Between \$195.58 and \$194.27

xxx - Analysis Chart



- Amplitude is 15° - Weak
- Direction Accuracy is 76.5%
- Market is at Support Extreme - Expect market consolidation Between \$38.3 and \$38.08

xxx - Analysis Chart



- Amplitude is 35° - Good
- Direction Accuracy is 73%
- Market is at Resistance Extreme - Expect market consolidation Between \$154.32 and \$154.03

xxx - Analysis Chart



- Amplitude is 34° - Good
- Direction Accuracy is 77.6%
- Market is at Support Extreme - Expect market consolidation Between \$113.97 and \$113.78

xxx - Analysis Chart



- Amplitude is 22° - Good
- Direction Accuracy is 66.4%
- Market is at Resistance Extreme - Expect market consolidation Between \$139.65 and \$139.1

xxx - Analysis Chart



- Amplitude is 16° - Weak
- Direction Accuracy is 81%
- Market is at Support Extreme - Expect market consolidation Between \$106.46 and \$105.14

xxx - Analysis Chart



- Amplitude is 29° - Good
- Direction Accuracy is 81.1%
- Market is at Support Extreme - Expect market consolidation Between \$77.16 and \$75.83

xxx - Analysis Chart



- Amplitude is 35° - Good
- Direction Accuracy is 64%
- Market is at Support Extreme - Expect market consolidation Between \$85.6 and \$84.82

xxx - Analysis Chart



- Amplitude is 20° - Weak
- Direction Accuracy is 72.3%
- Market is at Support Extreme - Expect market consolidation Between \$101.95 and \$101.15

xxx - Analysis Chart



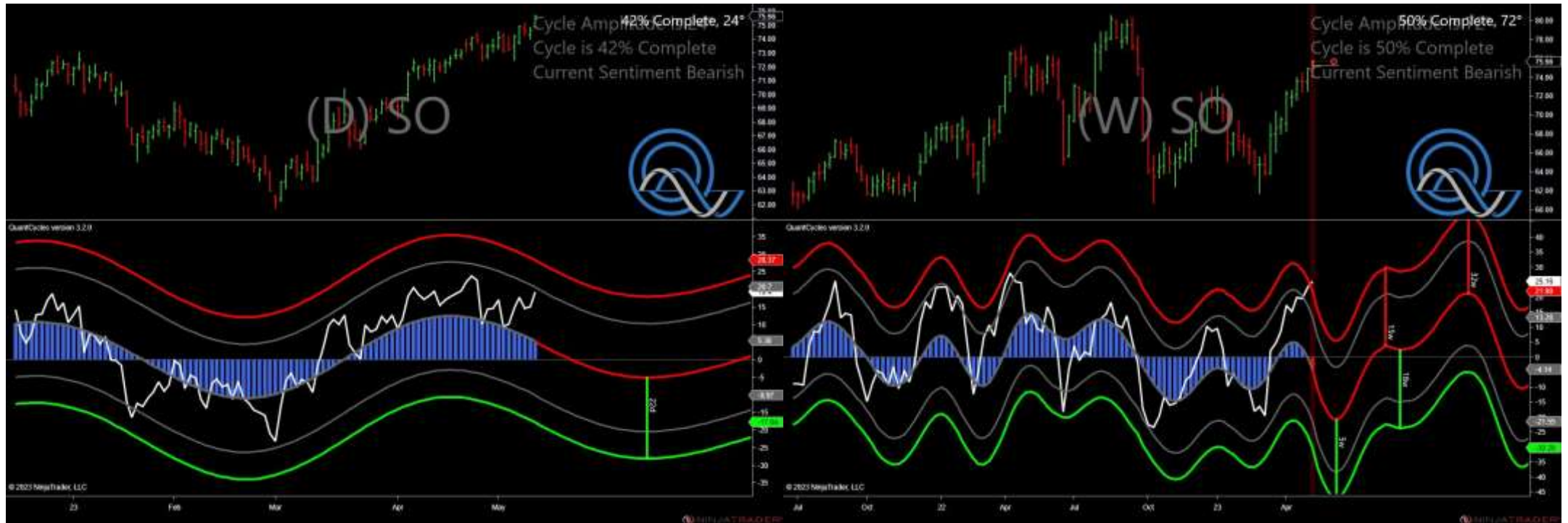
- Amplitude is 19° - Weak
- Direction Accuracy is 87.4%
- Market is at Resistance Extreme - Expect market consolidation Between \$48.72 and \$48.64

xxx - Analysis Chart



- Amplitude is 8° - Weak
- Direction Accuracy is 56.5%
- Market is at Resistance Extreme - Expect market consolidation Between \$47.29 and \$47.13

xxx - Analysis Chart



- Amplitude is 24° - Good
- Direction Accuracy is 72.8%
- Market is at Resistance Extreme - Expect market consolidation Between \$75.75 and \$75.66

xxx - Analysis Chart



- Amplitude is 16° - Weak
- Direction Accuracy is 93.3%
- Market is at Resistance Extreme - Expect market consolidation Between \$69.95 and \$69.94

xxx - Analysis Chart



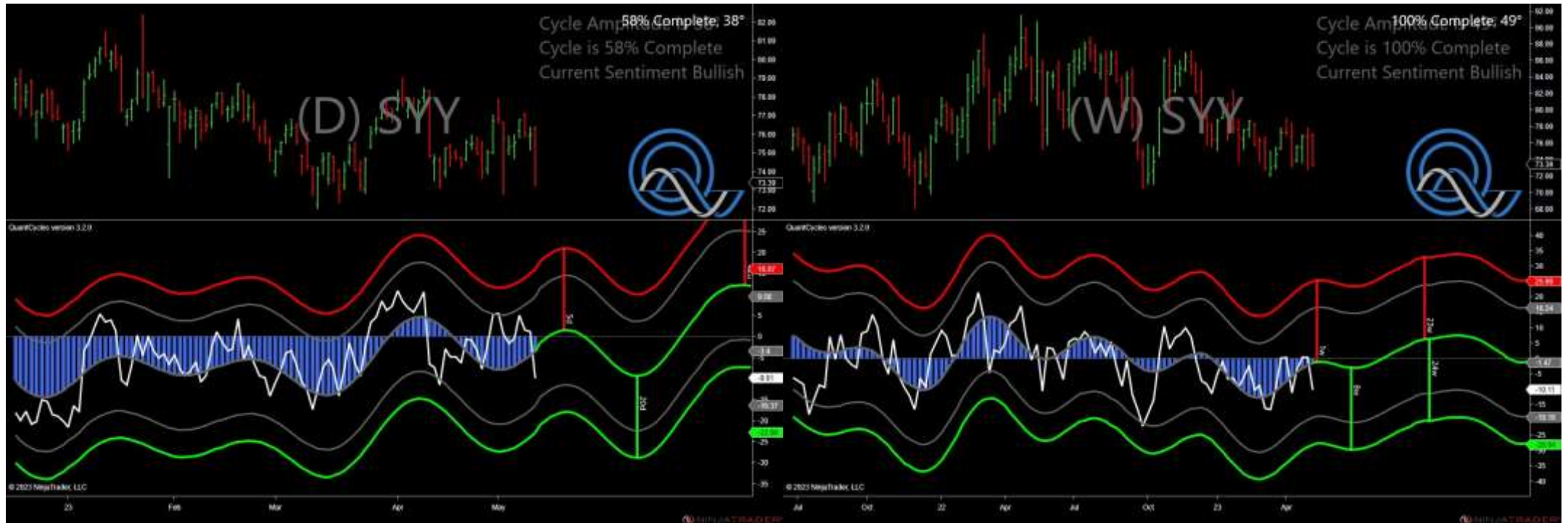
- Amplitude is 20° - Weak
- Direction Accuracy is 86.4%
- Market is at Resistance Extreme - Expect market consolidation Between \$227.11 and \$226.19

xxx - Analysis Chart



- Amplitude is 22° - Good
- Direction Accuracy is 58.2%
- Market is at Resistance Extreme - Expect market consolidation Between \$83.37 and \$83.11

xxx - Analysis Chart



- Amplitude is 38° - Good
- Direction Accuracy is 76.9%
- Market is at Support Extreme - Expect market consolidation Between \$73.39 and \$73.28

xxx - Analysis Chart



- Amplitude is 24° - Good
- Direction Accuracy is 65.9%
- Market is at Support Extreme - Expect market consolidation Between \$17.04 and \$16.86

xxx - Analysis Chart



- Amplitude is 13° - Weak
- Direction Accuracy is 37.1%
- Market is at Support Extreme - Expect market consolidation Between \$157.73 and \$155.02

xxx - Analysis Chart



- Amplitude is 3° - Weak
- Direction Accuracy is 93.1%
- Market is at Resistance Extreme - Expect market consolidation Between \$108.18 and \$108

xxx - Analysis Chart



- Amplitude is 32° - Good
- Direction Accuracy is 87.5%
- Market is at Support Extreme - Expect market consolidation Between \$183.16 and \$181.19

xxx - Analysis Chart



- Amplitude is 30° - Good
- Direction Accuracy is 74.9%
- Market is at Resistance Extreme - Expect market consolidation Between \$49.35 and \$49

xxx - Analysis Chart



- Amplitude is 21° - Good
- Direction Accuracy is 84.4%
- Market is at Resistance Extreme - Expect market consolidation Between \$165 and \$164.81

xxx - Analysis Chart



- Amplitude is 18° - Weak
- Direction Accuracy is 76.7%
- Market is at Support Extreme - Expect market consolidation Between \$64.78 and \$64.17

xxx - Analysis Chart



- Amplitude is 31° - Good
- Direction Accuracy is 69.8%
- Market is at Support Extreme - Expect market consolidation Between \$489.4 and \$487.64

xxx - Analysis Chart



- Amplitude is 25° - Good
- Direction Accuracy is 73.1%
- Market is at Resistance Extreme - Expect market consolidation Between \$173.98 and \$173.73

xxx - Analysis Chart



- Amplitude is 26° - Good
- Direction Accuracy is 71.9%
- Market is at Support Extreme - Expect market consolidation Between \$29.45 and \$28.9

xxx - Analysis Chart



- Amplitude is 25° - Good
- Direction Accuracy is 86.9%
- Market is at Resistance Extreme - Expect market consolidation Between \$112.56 and \$111.01

xxx - Analysis Chart



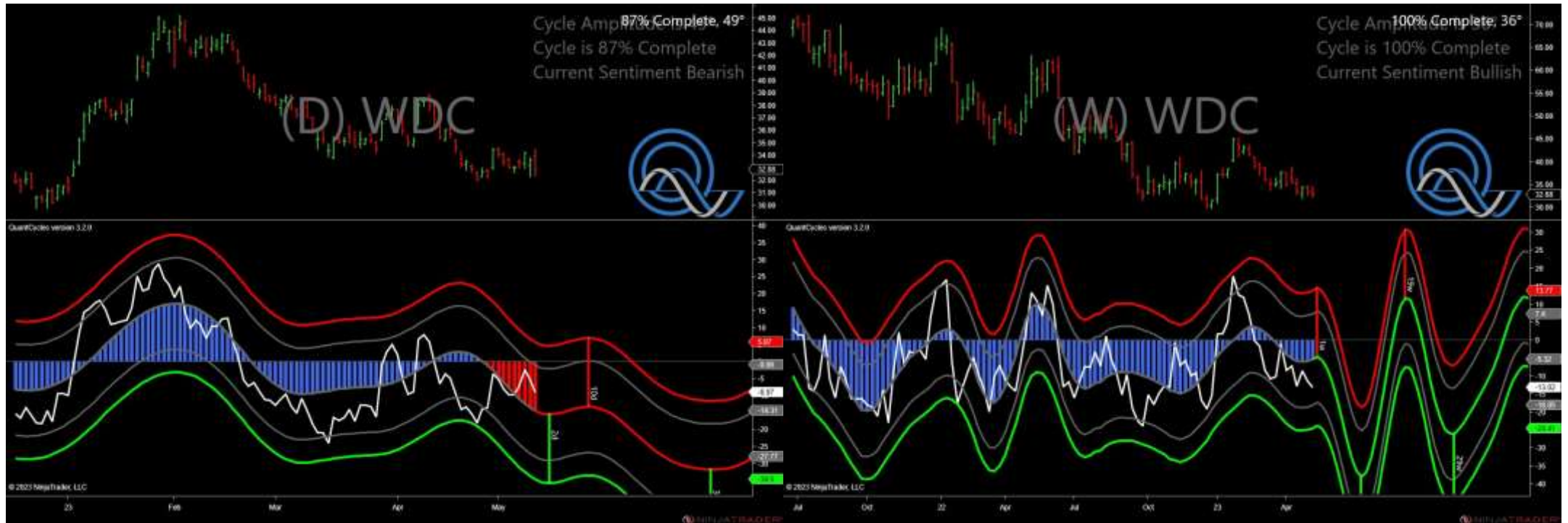
- Amplitude is 9° - Weak
- Direction Accuracy is 40.7%
- Market is at Support Extreme - Expect market consolidation Between \$219.69 and \$218.75

xxx - Analysis Chart



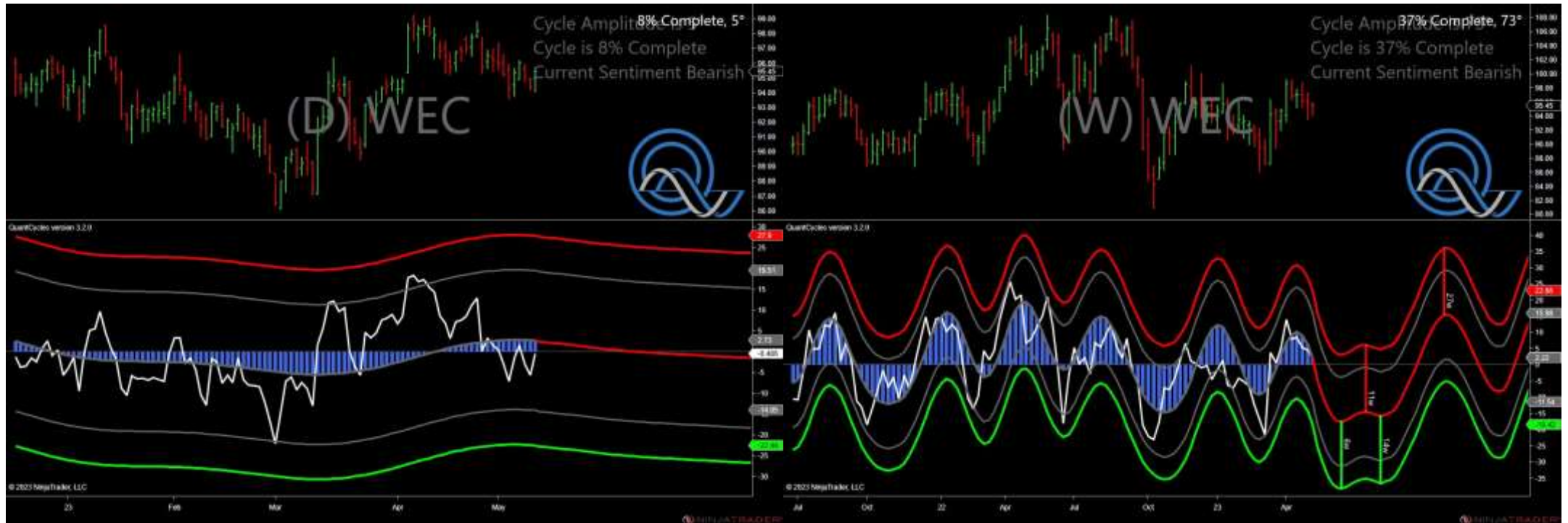
- Amplitude is 16° - Weak
- Direction Accuracy is 40.5%
- Market is at Support Extreme - Expect market consolidation Between \$37.63 and \$37.29

xxx - Analysis Chart



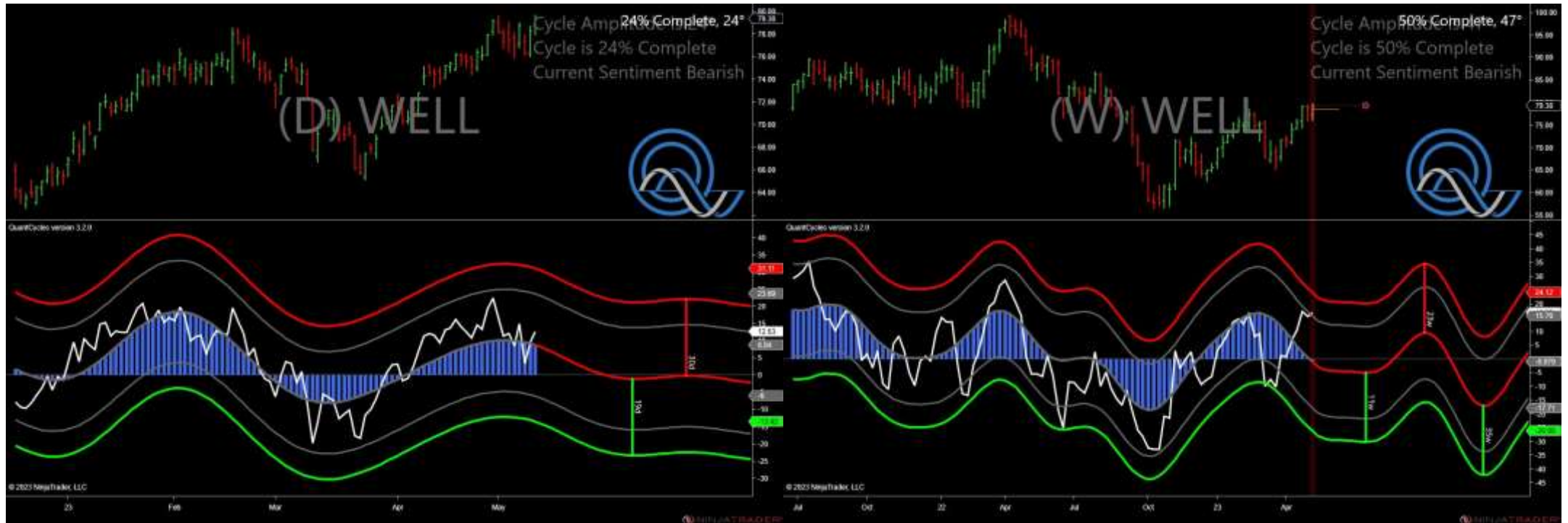
- Amplitude is 49° - Strong
- Direction Accuracy is 87%
- Market is at Resistance Extreme - Expect market consolidation Between \$34.5 and \$33.96

xxx - Analysis Chart



- Amplitude is 5° - Weak
- Direction Accuracy is 43.2%
- Market is at Resistance Extreme - Expect market consolidation Between \$95.7 and \$95.45

xxx - Analysis Chart



- Amplitude is 24° - Good
- Direction Accuracy is 81.3%
- Market is at Resistance Extreme - Expect market consolidation Between \$79.7 and \$79.38

xxx - Analysis Chart



- Amplitude is 9° - Weak
- Direction Accuracy is 79.6%
- Market is at Support Extreme - Expect market consolidation Between \$38.28 and \$37.9

xxx - Analysis Chart



- Amplitude is 21° - Good
- Direction Accuracy is 84.8%
- Market is at Resistance Extreme - Expect market consolidation Between \$136.82 and \$136.82

xxx - Analysis Chart



- Amplitude is 17° - Weak
- Direction Accuracy is 83.2%
- Market is at Support Extreme - Expect market consolidation Between \$170.2 and \$169.14

xxx - Analysis Chart



- Amplitude is 8° - Weak
- Direction Accuracy is 82.3%
- Market is at Resistance Extreme - Expect market consolidation Between \$29.76 and \$29.76

xxx - Analysis Chart



- Amplitude is 18° - Weak
- Direction Accuracy is 91.2%
- Market is at Support Extreme - Expect market consolidation Between \$152.55 and \$151.23

xxx - Analysis Chart



- Amplitude is 9° - Weak
- Direction Accuracy is 74.4%
- Market is at Support Extreme - Expect market consolidation Between \$30.1 and \$29.88

xxx - Analysis Chart



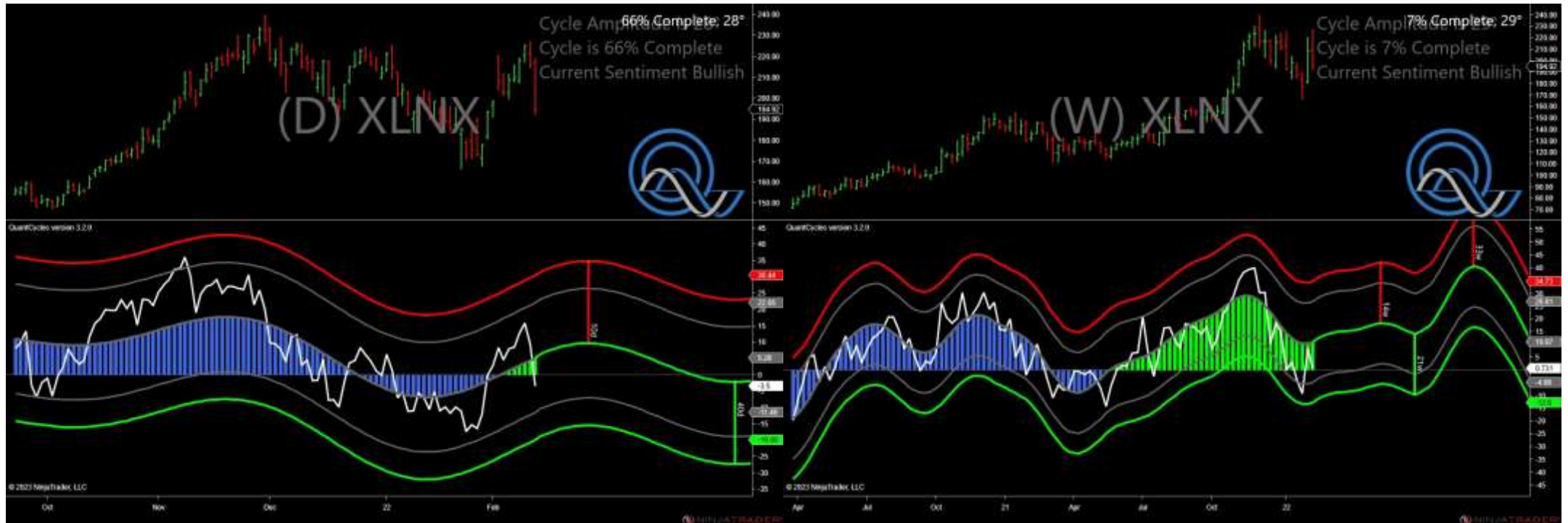
- Amplitude is 26° - Good
- Direction Accuracy is 66.7%
- Market is at Resistance Extreme - Expect market consolidation Between \$113.5 and \$113.49

xxx - Analysis Chart



- Amplitude is 21° - Good
- Direction Accuracy is 84.6%
- Market is at Resistance Extreme - Expect market consolidation Between \$69.71 and \$69.43

xxx - Analysis Chart



- Amplitude is 28° - Good
- Direction Accuracy is 87.3%
- Market is at Support Extreme - Expect market consolidation Between \$194.92 and \$192.49

xxx - Analysis Chart



- Amplitude is 19° - Weak
- Direction Accuracy is 91%
- Market is at Resistance Extreme - Expect market consolidation Between \$110.01 and \$109.74

xxx - Analysis Chart



- Amplitude is 15° - Weak
- Direction Accuracy is 85.1%
- Market is at Support Extreme - Expect market consolidation Between \$14.3 and \$14.02

xxx - Analysis Chart



- Amplitude is 46° - Strong
- Direction Accuracy is 72.2%
- Market is at Resistance Extreme - Expect market consolidation Between \$138.3 and \$137.74